



## Annual Report

Number	Permit Section	Question
1	S5.A.4.	<p>Attach updated annual Stormwater Management Program Plan (SWMP Plan) or website address in the Comment field where it can be found. (S5.A.4.)</p> <p><b>1 - 2021SWMP_Plan_Appendix A_1_03222022112314</b></p>
1.a	S5.A.4.	<p>Cite website of SWMP if unable to attach</p> <p><b><a href="https://www.wenatcheewa.gov/government/public-works/stormwater/wvstac">https://www.wenatcheewa.gov/government/public-works/stormwater/wvstac</a></b></p>
2	S9.C.6.	<p>Attach a map and copy of any annexations, incorporations, or boundary changes resulting in an increase or decrease in the Permittee's geographic area of permit coverage during the reporting period per S9.C.6.</p> <p><b>2 - Utility Boundary w Annexat_2_03222022112314</b></p>
3	S5.A.5.a.ii.	<p>Tracked the estimated costs of implementation of each component of the SWMP. (S5.A.5.a.ii.)</p> <p><b>Yes</b></p>
4	S5.A.6.b.	<p>Coordinated among departments within the jurisdiction to eliminate barriers to permit compliance. (S5.A.6.b.)</p> <p><b>Yes</b></p>
5	S5.B.1	<p>Were elements of a regional program implemented to complete any part of your education and outreach program? (S5.B.1)</p> <p><b>Yes</b></p>
5a	S5.B.1	<p>If yes, list the elements, and the regional program</p> <p><b>Public service announcements on local radio stations, pet waste program at local parks, education and outreach to concrete companies, newsletter detailing the WVSTAC program to steering committee members.</b></p>
6	S5.B.1.a.i.-iii.	<p>Attach description of public education and outreach programs and stewardship activities conducted per S5.B.1.a.i.-iii.</p> <p><b>6 - 2021 Public Education and _6_03222022112520</b></p>
7	S5.B.1.a.ii.	<p>Which types of businesses were targeted per S.5.B.1.a.ii.?</p> <p><b>Mobile contractors, specifically carpet cleaning companies, local concrete companies, and continued the Dump Smart program.</b></p>
8	S5.B.1.b.	<p>Used results of measuring the understanding and adoption of targeted behaviors among at least one audience in at least one subject area to direct education and outreach resources and evaluate changes in adoption of targeted behaviors. (Required no later than December 31, 2021, S5.B.1.b.)</p> <p><b>Yes</b></p>

Number	Permit Section	Question
9	S5.B.2.a.	Describe in Comments field the opportunities created for the public to participate in the decision making processes involving the development, implementation, and updates of the Permittee's SWMP. (S5.B.2.a.)  <b>As a result of COVID, opportunities were limited. Input from the Wenatchee Valley Stormwater Steering Committee was via an emailed survey. Additionally, the WVSTAC webpage retained the survey online for weeks allowing public participation. Chelan County Board of County Commissioners hold weekly meetings where the public can provide comments on the stormwater program and available via Zoom.</b>
10	S5.B.2.b.	Posted the updated SWMP Plan and latest annual report on your website no later than May 31.  <b>Yes</b>
10a	S5.B.2.b.	List the website address in Comments field. (S5.B.2.b.)  <b><a href="https://www.co.chelan.wa.us/public-works/pages/storm-water">https://www.co.chelan.wa.us/public-works/pages/storm-water</a></b>
11	S5.B.3.a.	Maintained a map of the MS4 that includes the requirements listed in S5.B.3.a. (Updated maps required no later than August 1, 2023)  <b>Not Applicable</b>
12	S5.B.3.a.i.	Attach a spreadsheet that lists the known outfalls and discharge points, including the outfalls' size and material(s). (Required to update no later than August 1, 2023, S5.B.3.a.i.)  <b>Not Applicable</b>
13	S5.B.3.a.ix.	Developed an electronic format for map, with fully described mapping standards in accordance with S5.B.3.a.ix. (Required no later than August 1, 2021)  <b>Yes</b>
14	S5.B.3.b.	Implemented an ordinance or other regulatory mechanism to effectively prohibit non-stormwater, illicit discharges as described in S5.B.3.b.  <b>Yes</b>
15	S5.B.3.b.vii.	Updated ordinance or regulatory mechanism to meet the requirements of this permit, if necessary. (Required no later than February 2, 2023, S5.B.3.b.vii.)  <b>Yes</b>
15a	S5.B.3.b.vii.	Cite the code reference in Comments field.  <b>Chelan County Code chapter 13.14 <a href="https://www.codepublishing.com/WA/ChelanCounty/">https://www.codepublishing.com/WA/ChelanCounty/</a></b>
16	S5.B.3.b.vi.	Implemented a compliance strategy, including informal compliance actions as well as enforcement provisions of the regulatory mechanism described in S5.B.3.b. (S5.B.3.b.vi.)  <b>Yes</b>
17	S5.B.3.c.	Implemented procedures for conducting illicit discharge investigations in accordance with S5.B.3.c.  <b>Yes</b>

Number	Permit Section	Question
18	S5.B.3.c.iv.	Percentage of MS4 coverage area screened in reporting year per S5.B.3.c.iv. (Required to screen 12% on average each year, S5.B.3.c.iv.)  <b>12</b>
18a	S5.B.3.c.iv.	Cite field screening techniques used to determine percent of MS4 screened.  <b>WinCAMS time/road tracking, Mobile GIS tracking (currently beta testing tracking program)</b>
18b	S5.B.3.c.iv.	Percentage of total MS4 screened from permit effective date through end of the reporting year.  <b>40</b>
19	S5.B.3.c.v.	Describe how you publicized a hotline telephone number for public reporting of spills and other illicit discharges in the Comments field. (S5.B.3.c.v.)  <b><a href="https://www.co.chelan.wa.us/public-works/pages/storm-water">https://www.co.chelan.wa.us/public-works/pages/storm-water</a> Hotline also listed on public education and outreach material provided to the public.</b>
20	S5.B.3.c.vi.	Implemented an ongoing illicit discharge training program for all municipal field staff per S5.B.3.c.vi.  <b>Yes</b>
21	S5.B.3.c.vii.	Informed public employees, businesses, and the general public of hazards associated with illicit discharges and improper disposal of waste. Describe actions in Comments field. (S5.B.3.c.vii.)  <b>Website, education and outreach program, radio advertisements, social media, targeted mailing</b>
22	S5.B.3.d.	Implemented an ongoing program designed to address illicit discharges, including spills and illicit connections into the MS4 per S5.B.3.d.  <b>Yes</b>
23	S5.B.3.e.	Implemented an ongoing illicit discharge training program for all staff responsible for implementing the procedures and program, as described in S5.B.3.e.  <b>Yes</b>
24	S5.B.3.f.	Attach a report with data describing the actions taken to investigate, characterize, trace and eliminate each illicit discharge found by or reported to the permittee. The submittal must include all of the applicable information and must follow the format and timelines described in Appendix 7. (S5.B.3.f.)  <b>24 - IDDE Reporting tool 2021_24_03222022140013</b>
25	S5.B.4.a.	Implemented an ordinance or other regulatory mechanism and enforcement procedures for construction site stormwater runoff control as described in S5.B.4.  <b>Yes</b>
26	S5.B.4.a.i.-iv.	Adopted ordinance or other regulatory mechanism and enforcement procedures for construction site stormwater runoff control as described in S5.B.4.a.i.-iv. (Required no later than December 31, 2022)  <b>Yes</b>

Number	Permit Section	Question
26a	S5.B.4.a.i.-iv.	Cite code reference.  <b><a href="https://www.codepublishing.com/WA/ChelanCounty/Chapter13.16and13.18">https://www.codepublishing.com/WA/ChelanCounty/ Chapter 13.16 and 13.18</a></b>
27	S5.B.4.b.	Reviewed site plans for all new development and redevelopment projects as described in S5.B.4.b.  <b>Yes</b>
27a	S5.B.4.b.i.	Number of site plans reviewed during the reporting period. (S5.B.4.b.i.)  <b>12</b>
27b	S5.B.4.b.i.	The number of construction sites that provided their intent to apply for the "Erosivity Waiver" during the reporting period as described in S5.B.4.b.i.  <b>0</b>
27c	S5.B.4.b.i.	The number of complaints investigated about sites that have received an "Erosivity Waiver" . (S5.B.4.b.i.)  <b>0</b>
28	S5.B.4.	Implemented procedures for site inspection and enforcement of construction stormwater pollution control measures. (S5.B.4.)  <b>Yes</b>
28a	S5.B.4.c.i.	Number of permitted construction sites inspected during the reporting period. (S5.B.4.c.i.)  <b>12</b>
28b	S5.B.4.f.	Number of enforcement actions taken during the reporting period based on construction phase inspections at new development and redevelopment projects. (S5.B.4.f.)  <b>0</b>
29	S5.B.4.d.	Trained the staff involved in permitting, plan review, field inspections, and enforcement for construction site runoff control. (S5.B.4.d.)  <b>Yes</b>
30	S5.B.4.e.	Provided information to construction site operators and design professionals about training available on how to comply with the requirements in Appendix 1 and the BMPs in the SWMMEW, or an equivalent document. Describe information provided in the Comments field. (S5.B.4.e.)  <b>Yes</b>
30a	S5.B.4.e.	Describe information provided in the Comments field. (S5.B.4.e.)  <b>Email communication, WVSTAC/Chelan County website, pre-application meetings, building permit conditions, CESCL training</b>
31	S5.B.5.a.	Implemented ordinance or other regulatory mechanism and enforcement procedures to address post-construction stormwater controls runoff to the MS4 from new development and redevelopment as described in S5.B.5.a.  <b>Yes</b>

Number	Permit Section	Question
32	S5.B.5.a.	Revised ordinance or other regulatory mechanism and enforcement procedures to address post-construction stormwater controls runoff to the MS4 from new development and redevelopment as described in S5.B.5.a. (Adopted no later than December 31, 2022)  <b>Yes</b>
32a	S5.B.5.a.	Cite code reference  <b><a href="https://www.codepublishing.com/WA/ChelanCounty/Chapter13.16and13.18">https://www.codepublishing.com/WA/ChelanCounty/ Chapter 13.16 and 13.18</a></b>
33	S5.B.5.b.ii.(a)	Allowed non-structural preventive actions and source reduction approaches such as Low Impact Development (LID) techniques to be used. (S5.B.5.b.ii.(a))  <b>Yes</b>
34	S5.B.5.b.ii.(b)(2)	Required projects approved under S5.B.5. to retain runoff generate on-site for, at a minimum, the 10-year, 24-hour rainfall event or a local equivalent, using either on-site or regional stormwater facilities. (S5.B.5.b.ii.(b)(2))  <b>Yes</b>
35	S5.B.5.d.	Inspected post-construction stormwater controls, including structural BMPs, at new development and redevelopment sites. (S5.B.5.d.)  <b>Yes</b>
35a	S5.B.5.d.i.	Number of new and redeveloped sites inspected during installation of structural BMPs during the reporting period. (S5.B.5.d.i.)  <b>12</b>
35b	S5.B.5.d.i.	Number of new and redeveloped sites inspected upon final installation of BMPs or upon completion of the project during the reporting period. (S5.B.5.d.i.)  <b>12</b>
36	S5.B.5.d.ii.	Inspected structural BMPs at least once every five years after final installation. (S5.B.5.d.ii.)  <b>Yes</b>
36a	S5.B.5.d.ii.	Number of BMPs inspected during the reporting period.  <b>4</b>
37	S5.B.5.d.	Number of enforcement actions taken as a result of these inspections during the reporting period? (S5.B.5.d.)  <b>0</b>
38	S5.B.5.e.	Trained the staff involved in permitting, plan review, inspection, and enforcement for post-construction stormwater control. (S5.B.5.e.)  <b>Yes</b>

Number	Permit Section	Question
39	S5.B.5.f.	<p>Provided information to design professionals about training available on how to comply with the requirements in Appendix 1 and apply the BMPs in the SWMMEW, or an equivalent document. (S5.B.5.f.)</p> <p><b>Yes</b></p>
39a	S5.B.5.f.	<p>Describe information provided and cite the manual used</p> <p><b>Department of Ecology Stormwater Management Manual for Eastern Washington (2019), WVSTAC webpage, email communications, Ecology website</b></p>
40	S5.B.6.a.	<p>Reviewed and, if needed, updated Operations and Maintenance Plan. (Required no later than December 31, 2022, S5.B.6.a.)</p> <p><b>Not Applicable</b></p>
41	S5.B.6.a.	<p>Implemented the schedule of Operation and Maintenance activities for municipal operations. (S5.B.6.a.)</p> <p><b>Yes</b></p>
42	S5.B.6.a.i.(f) and (g)	<p>Have NPDES permit coverage for all applicable Permittee construction projects and industrial facilities. (S5.B.6.a.i.(f) and (g))</p> <p><b>Yes</b></p>
43	S5.B.6.a.i.(h)	<p>Implemented a Stormwater Pollution Prevention Plan for all heavy equipment maintenance or storage yards, and material storage facilities owned or operated by the Permittee in areas subject to this Permit that are not required to have coverage under an NPDES permit that covers stormwater discharges associated with the activity. (S5.B.6.a.i.(h))</p> <p><b>Yes</b></p>
44	S5.B.6.a.ii.(a)	<p>Inspected stormwater treatment and flow control facilities (except catch basins) owned or operated by the Permittee at least once every two years. (S5.B.6.a.ii.(a))</p> <p><b>Yes</b></p>
44a	S5.B.6.a.ii.(a)	<p>Number of facilities inspected during the reporting period.</p> <p><b>3</b></p>
45	S5.B.6.a.ii.(b)	<p>Inspected municipally owned or operated catch basins and inlets every two years or used an alternative approach? (Required at least once every two years, S5.B.6.a.ii.(b))</p> <p><b>Yes</b></p>
45a	S5.B.6.a.ii.(b)	<p>Number of known catch basins.</p> <p><b>670</b></p>
45b	S5.B.6.a.ii.(b)	<p>Number of catch basins inspected during the reporting period.</p> <p><b>670</b></p>
45c	S5.B.6.a.ii.(b)	<p>Number of known catch basins cleaned during the reporting period.</p> <p><b>300</b></p>

Number	Permit Section	Question
46	S5.B.6.a.ii.(b)	If used an alternative to standard schedule for catch basin inspections for all or a portion of the MS4, attach description of the method used. (S5.B.6.a.ii.(b))  <b>Not Applicable</b>
47	S5.B.6.a.ii.(c)	Conducted spot checks of stormwater facilities after major storms. (S5.B.6.a.ii.(c))  <b>Yes</b>
48	S5.B.6.b.	Trained the staff with primary construction, operations, or maintenance job functions that are likely to impact stormwater quality. (S5.B.6.b.)  <b>Yes</b>
49	S7.A.	Complied with the Total Maximum Daily Load (TMDL)-specific requirements identified in Appendix 2. (S7.A.)  <b>Not Applicable</b>
50	S7.A.	For TMDLs listed in Appendix 2: Attach a summary of relevant SWMP and Appendix 2 activities to address the applicable TMDL parameter(s). (S7.A.)  <b>Not Applicable</b>
51	S8.A.	Attach a summary of your participation in effectiveness study development and implementation during the reporting year. (S8.A.1. and S8.A.2.a.)  <b>51 - Summary of City of Wenatc_51_03222022144212</b>
52	S8.A.	Did you submit a list of project participants and their associated roles to Ecology. (Required to submit by June 30, 2021, S8.A.2.b)  <b>Yes</b>
56	S8.A.	Was the SWMP updated to include effectiveness study activities? (S8.A.2.f.)  <b>Yes</b>
57	G3.	Notified Ecology in accordance with G3. of any discharge into or from the Permittees MS4 which could constitute a threat to human health, welfare, or the environment. (G3.)  <b>Not Applicable</b>
58	G3.A.	Took appropriate action to correct or minimize the threat to human health, welfare, and/or the environment per G3.A.  <b>Not Applicable</b>
59	G20.	Notified Ecology of the failure to comply with the permit terms and conditions within 30 days of becoming aware of the non-compliance. (G20.)  <b>Not Applicable</b>
60	G20.	Number of non-compliance notifications provided in reporting year. (G20.)  <b>Not Applicable</b>

Number	Permit Section	Question
61	S4.F.1.	Notified Ecology within 30 days of becoming aware that a discharge from the Permittee's MS4 caused or contributed to a known or likely violation of water quality standards in the receiving water. (S4.F.1.)  <b>Not Applicable</b>
62	S4.F.3.a.	If requested, submitted an Adaptive Management Response report in accordance with S4.F.3.a.  <b>Not Applicable</b>
63	S4.F.3.d.	Attach a summary of the status of implementation of any actions taken pursuant to S4.F.3. and the status of any monitoring, assessment, or evaluation efforts conducted during the reporting period. (S4.F.3.d.)  <b>Not Applicable</b>

**Attachments:**

## View Files Attached to Submission

	DocDescr	DocName	DocExt	DocID	SubID	AppName
<a href="#">View</a>	WAR046002_1_03222022112314	1 - 2021SWMP_Plan_Appendix A_1_03222022112314	.pdf	1231676	1803443	wqwebportal
<a href="#">View</a>	WAR046002_2_03222022112314	2 - Utility Boundary w Annexa_2_03222022112314	.pdf	1231677	1803443	wqwebportal
<a href="#">View</a>	WAR046002_24_03222022140013	24 - IDDE Reporting tool 2021_24_03222022140013	.xlsx	1231743	1803443	wqwebportal
<a href="#">View</a>	WAR046002_51_03222022144212	51 - Summary of City of Wenatche_51_03222022144212	.pdf	1231809	1803443	wqwebportal
<a href="#">View</a>	WAR046002_6_03222022112520	6 - 2021 Public Education and _6_03222022112520	.pdf	1231678	1803443	wqwebportal

[Close](#)

[Ecology Home](#) | [WQWebPortal Home](#) | [WQWebSubmittal Home](#) | [Help](#) | [Release Notes](#) | [Contact Us](#)

Submittals (WQWebSubmittal) Version 1.5-3 | [Data Disclaimer](#) | [Privacy Policy](#)  
 Copyright © Washington State Department of Ecology 2022. All Rights Reserved.



## **Appendix A**

### 2021 Stormwater Management Program Plan

## **2021 Wenatchee Valley Stormwater Management Program Plan**

The following stormwater activities are regional activities unless otherwise noted. The regional partners include Chelan County, Douglas County, City of East Wenatchee, City of Wenatchee, and Wenatchee Valley College.

### **I. Stormwater Management Program**

- a. Update Wenatchee Valley Stormwater Management Program Plan
- b. Schedule quarterly regional stormwater utility meetings.
- c. Prepare an annual report.
- d. Resubmit Internal Coordination with Annual Report (3/30/2021)

### **II. Public Education and Outreach**

- a. Provide stormwater education and outreach through a public forum (ad, newsprint, social media, radio) and/or public event.
- b. Participate in Wenatchee School District programs (City of Wenatchee)
- c. Distribute Updated Dump Smart Program Materials
- d. Provide Education for Concrete Wash Out
- e. Measure understanding and adoption of behavior for one target audience and then re-evaluate (8/1/2021)

### **III. Public Involvement and Participation**

- a. Contact Wenatchee Valley Stormwater Program Steering Committee meeting (Newsletter or Meeting) Post Stormwater Management Program and Plan to regional website.
- b. Provide a stormwater survey on the website and at public events.
- c. Measure understanding and adoption of behavior for one target audience (8/21/2021)

### **IV. Illicit Discharge Detection and Elimination**

- a. Continue to review and update stormwater system map as needed
- b. Field assess an average of 12% of the stormwater system each year, track the total percentage of the MS4 assessed starting August 1, 2019.
- c. Map required in electronic format with fully described mapping standards (8/1/2021)

### **V. Construction Site Stormwater Runoff Control**

- a. Review local regulations and prepare to update regulations to meet permit requirements if necessary (12/31/2021)
- b. Update regulatory mechanism to meet requirements, if needed (12/31/2021)
- c. CESCL Certification & Recertification Class (Online format) for Municipal Staff

### **VI. Post-Construction Stormwater Management for new Development and Redevelopment**

- a. Continue inspections of structural best management practices during installation and upon completion
- b. Continue implementation of 5-year operation and maintenance inspections of post structural best management practices
- c. Update regulatory mechanism to meet requirements, if needed (12/31/2021)

### **VII. Municipal Operations and Maintenance**

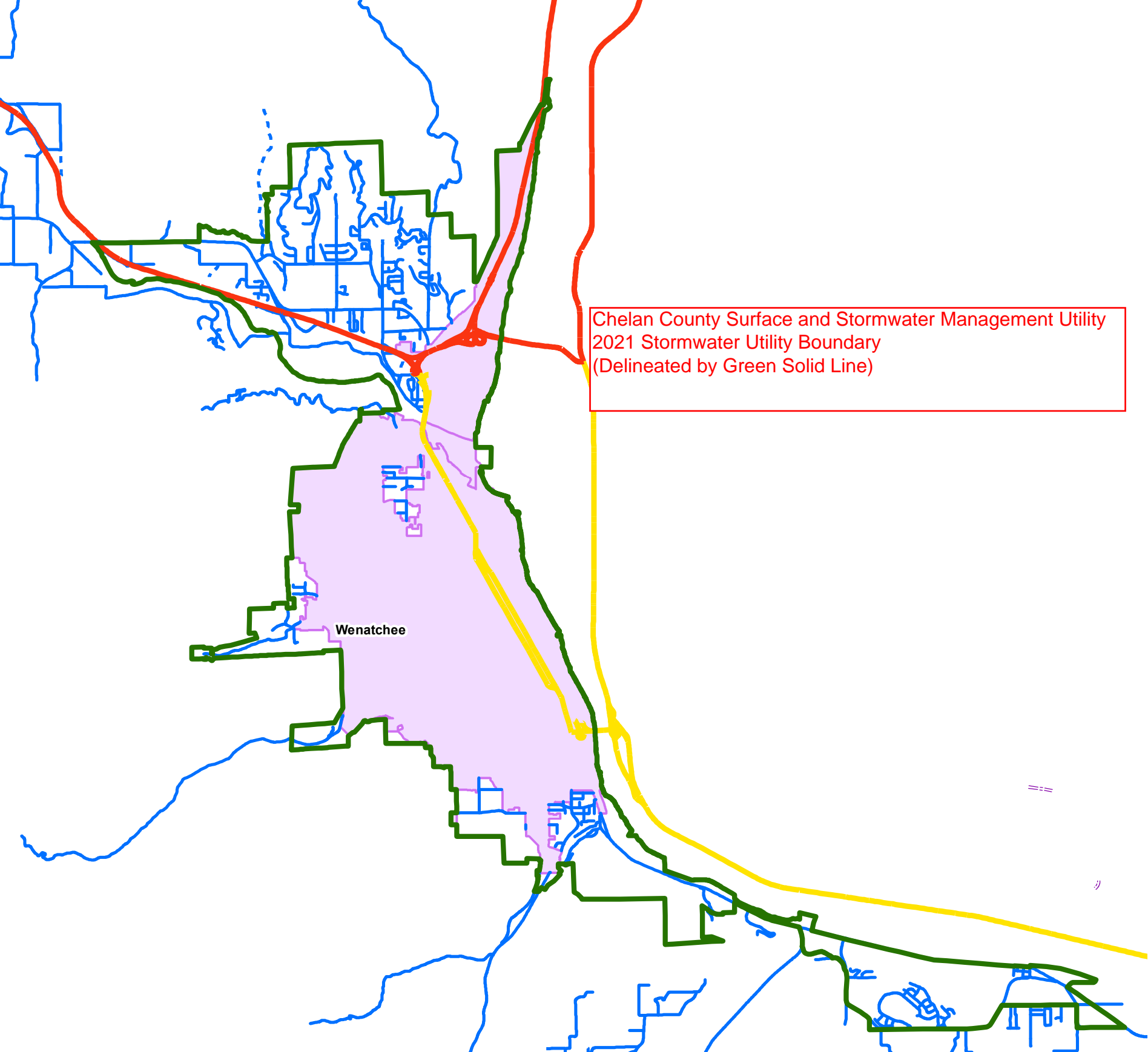
- a. Review and update municipal operations and maintenance plans as needed to meet new requirements by December 31, 2021
- b. Provide staff training

### **VIII. Monitoring and Assessment**

- a. Prepare a description of an effectiveness study including participants and participant roles

to submit to Ecology

- b. Prepare Detailed Study Design Proposal, due to Ecology 6/30/2022



Chelan County Surface and Stormwater Management Utility  
2021 Stormwater Utility Boundary  
(Delineated by Green Solid Line)

Wenatchee

**ORDINANCE NO. 2021-17**

**AN ORDINANCE,** providing for the annexation of unincorporated lands located on the south and east side of Skyline Drive, bordered to the north and east by parcels in the City and to the south and west by the urban growth area boundary, known as the Skyline Annexation, subject to the provisions of Ordinance No. 2007-34 and all subsequent amendments thereto.

**WHEREAS,** a petition to annex the real property hereinafter described was filed with the City Council of the City of Wenatchee, signed by owners representing 60% of the assessed valuation in the area for which annexation is petitioned, and

**WHEREAS,** the applicable zoning for the annexed property will be Residential Foothills Low as designated on the pre-annexation zoning map, and

**WHEREAS,** the City Council of the City of Wenatchee considered all factors relative to the proposed annexation, and

**WHEREAS,** a review proceeding for said annexation is not required pursuant to RCW 35A.14.220.

**NOW, THEREFORE, THE CITY COUNCIL OF THE CITY OF WENATCHEE DO ORDAIN** as follows:

**SECTION I**

That the following described real property located in Chelan County, Washington, contiguous to the City of Wenatchee, to-wit:

See Exhibit "A" as depicted in Exhibit "B", attached hereto and incorporated herein by reference as if fully set forth;

and each and every part thereof be and the same is hereby annexed to the City of Wenatchee, State of Washington; and that the corporate limits of the City of Wenatchee be and they are hereby extended so as to include the property and territory hereinbefore fully described. That said property be assessed and taxed at the same rate and on the same basis as the property of the City of Wenatchee is assessed and taxed to pay for the now outstanding indebtedness of the City of Wenatchee contracted prior to or existing at the time of this annexation.

## **SECTION II**

That the property described in Section I hereof be and the same is hereby classified and zoned as Residential Foothills Low. All such zoning and classification being subject to the provisions of Ordinance No. 2007-34, and all subsequent amendments thereto.

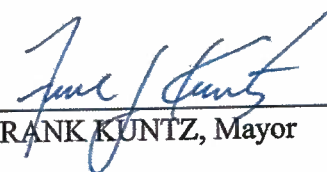
## **SECTION III**

This Ordinance shall take effect from and after its passage on the later of sixty (60) days after publication of such Ordinance once in The Wenatchee World, the same being the official newspaper of the City of Wenatchee, and the Clerk is hereby directed to cause the same to be so publicized, or sixty (60) days from the date notice of the annexation is provided to the Chelan County Treasurer, Assessor, and light, power and gas distribution businesses.

**PASSED BY THE CITY COUNCIL OF THE CITY OF WENATCHEE**, at a regular meeting thereof, this 27<sup>th</sup> day of May, 2021.

CITY OF WENATCHEE, a Municipal  
Corporation


By:

  
FRANK KUNTZ, Mayor

ATTEST:

By:   
TAMMY STANGER, City Clerk

APPROVED:

By:   
STEVE D. SMITH, City Attorney

**Ordinance No. 2021-17**

**EXHIBIT A**

**Boundary Description of Real Property to be Annexed into  
the City of Wenatchee, WA  
April 5, 2021**

**- SKYVIEW LANE ANNEXATION -**

A parcel of land comprising multiple parcels of land located within that portion of the South half of the southwest quarter of Section 9, Township 22 North, Range 20 East of the Willamette Meridian, Chelan County, Washington, lying westerly and southerly of the westerly and southerly right of way line of Skyline Drive, said parcel being more particularly described as follows:

Commencing at the TRUE POINT OF BEGINNING, said point being the common corner of Lots 1 and 2, Chelan County Short Subdivision Number 254, recorded January 17, 1978, book 750 of Deeds, at pages 1424-1430, under Auditor's File Number 782239, records of said County, said corner being on the westerly right of way line of said Skyline Drive; thence southwesterly, southerly, and northwesterly along the southerly boundary of Lot 1, said Short Subdivision, to the common corner of Lot 1 and 3, said Short Subdivision; thence southwesterly along the northwesterly line of said Lot 3 to the southwest corner thereof, said corner being also a point on the South line of said Section 9; thence westerly along the South line of said Section 9 to the southwest corner of Parcel A, Boundary Line Adjustment Number 2018-209, recorded July 30, 2018, under Auditor's File Number 2482128, records of said County; thence northwesterly along the westerly line of said Parcel A to the most westerly corner thereof, said corner being also the southeasterly corner of Lot 2, Chelan County Short Plat Number 1418 (Streib Short Plat), recorded June 29, 1987, in Book 4 of Short Plats, at page 97, under Auditor's File Number 8706290083, records of said County; thence northwesterly along the southwesterly boundaries of Lots 1 and 2 of said Short Plat Number 1418 to the northwest corner of Lot 1, said Short Plat, said corner being also the southerly corner of Parcel B, Chelan County Boundary Line Adjustment Number 2018-020, recorded February 5, 2018, under Auditor's File Number 2472691, records of said County; thence northwesterly along the westerly boundary of said Parcel B to the northwest corner thereof, said corner being also the West corner of Lot 1, Chelan County Short Subdivision Number 115, recorded February 28, 1975, in Book 725 of Deeds, at pages 600-605, under Auditor's File Number 747094, records of said County; thence northeasterly along the northerly line of said Lot 1 to a point of intersection with the westerly right of way of said Skyline Drive; thence southeasterly and easterly along the westerly and southerly right of way line of said Skyline Drive to the TRUE POINT OF BEGINNING.



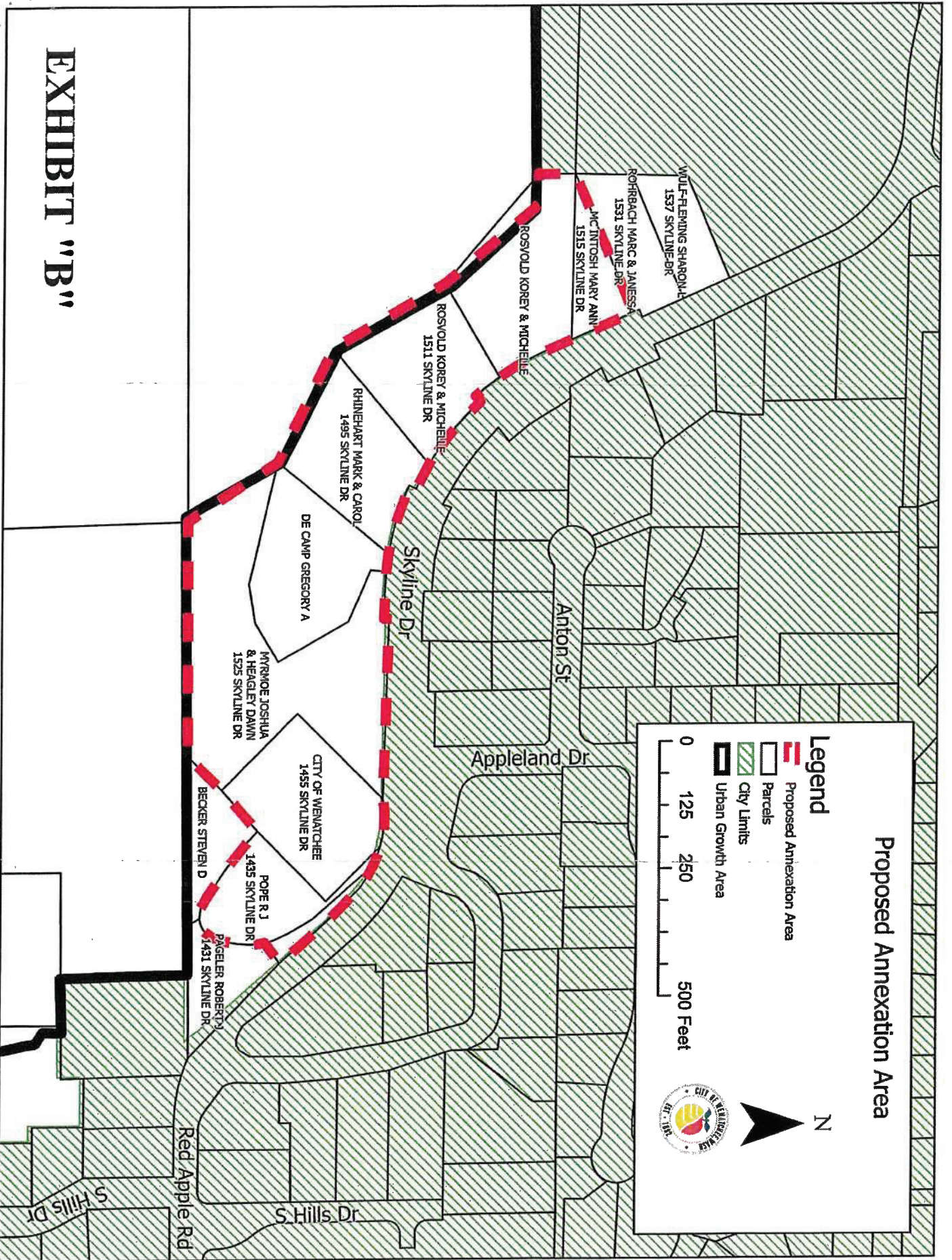


EXHIBIT "B"

**ORDINANCE NO. 2021-18**

**AN ORDINANCE**, providing for the annexation of unincorporated lands located along the west side of S Mission Street bordering City parcels to the north and unincorporated parcels to the west, south and east, known as the Martinez Annexation, subject to the provisions of Ordinance No. 2007-34 and all subsequent amendments thereto.

**WHEREAS**, a petition to annex the real property hereinafter described was filed with the City Council of the City of Wenatchee, signed by owners representing 60% of the assessed valuation in the area for which annexation is petitioned, and

**WHEREAS**, the applicable zoning for the annexed property will be Residential High as designated on the pre-annexation zoning map, and

**WHEREAS**, the City Council of the City of Wenatchee considered all factors relative to the proposed annexation, and

**WHEREAS**, a review proceeding for said annexation is not required pursuant to RCW 35A.14.220.

**NOW, THEREFORE, THE CITY COUNCIL OF THE CITY OF WENATCHEE DO ORDAIN** as follows:

**SECTION I**

That the following described real property located in Chelan County, Washington, contiguous to the City of Wenatchee, to-wit:

See Exhibit "A" as depicted in Exhibit "B", attached hereto and incorporated herein by reference as if fully set forth;



and each and every part thereof be and the same is hereby annexed to the City of Wenatchee, State of Washington; and that the corporate limits of the City of Wenatchee be and they are hereby extended so as to include the property and territory hereinbefore fully described. That said property be assessed and taxed at the same rate and on the same basis as the property of the City of Wenatchee is assessed and taxed to pay for the now outstanding indebtedness of the City of Wenatchee contracted prior to or existing at the time of this annexation.

## **SECTION II**

That the property described in Section I hereof be and the same is hereby classified and zoned as Residential High. All such zoning and classification being subject to the provisions of Ordinance No. 2007-34, and all subsequent amendments thereto.

## **SECTION III**

This Ordinance shall take effect from and after its passage on the later of sixty (60) days after publication of such Ordinance once in The Wenatchee World, the same being the official newspaper of the City of Wenatchee, and the Clerk is hereby directed to cause the same to be so publicized, or sixty (60) days from the date notice of the annexation is provided to the Chelan County Treasurer, Assessor, and light, power and gas distribution businesses.

**PASSED BY THE CITY COUNCIL OF THE CITY OF WENATCHEE**, at a regular meeting thereof, this 27<sup>th</sup> day of May, 2021.

CITY OF WENATCHEE, a Municipal  
Corporation

By: \_\_\_\_\_

  
FRANK KUNTZ, Mayor

ATTEST:

By: Tammy L. Stanger  
TAMMY STANGER, City Clerk

APPROVED:

By: Steve D. Smith  
STEVE D. SMITH, City Attorney

**Ordinance No. 2021-18**

**EXHIBIT A**

**Boundary Description of Real Property to be Annexed into  
the City of Wenatchee, WA  
March 22, 2021**

**-MARTINEZ / CHELAN COUNTY ANNEXATION -**

Parcels of land and street right of way located within the southeast quarter of the northeast quarter of the southeast quarter of Section 15, Township 22 North, Range 20 East of the Willamette Meridian, Chelan County, Washington, being a portion of Lots 3, 4 and 5, Block 2, Cross Street, and Lot 1, Block 3, all in Loudenback's Broadview Tracts, according to the plat thereof recorded in Volume 4 of Plats, at page 74, records of said County, said parcels being more particularly described as follows:

The East half of Lots 3 and 4, Block 2, said Loudenback's Broadview Tracts, EXCEPT the North 2.5 feet of said Lot 4, AND EXCEPT the East 15 feet of said lots for right of way for Mission Street as conveyed to Chelan County by instrument recorded December 10, 1947 and January 28, 1948; under Auditor's File Numbers 402107 and 404013, respectively;

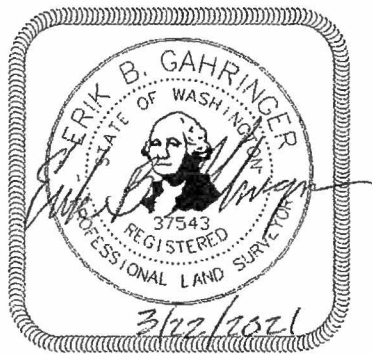
TOGETHER WITH the North 2.5 feet of Lots 4 and 5, Block 2, said Loudenback's Broadview Tracts;

AND TOGETHER WITH the North 2.5 feet of Cross Street adjoining Lot 5, Block 2, said Loudenback's Broadview Tracts;

AND TOGETHER WITH the North 2 feet of Lot 1, Block 3, said Loudenback's Broadview Tracts.

Prepared By: Erik B. Gahringer, PLS

Date: March 22, 2021



48° North

Professional Land Surveying & Land Use Consulting

P.O. Box 4266

Wenatchee, WA 98807-4266

Phone: (509) 436-1640



# EXHIBIT "B"

## Proposed Annexation Area

### Legend

- Parcels
- City Limits
- Urban Growth Area
- Proposed Boundary

0 50 100 200 Feet

N



Burns St

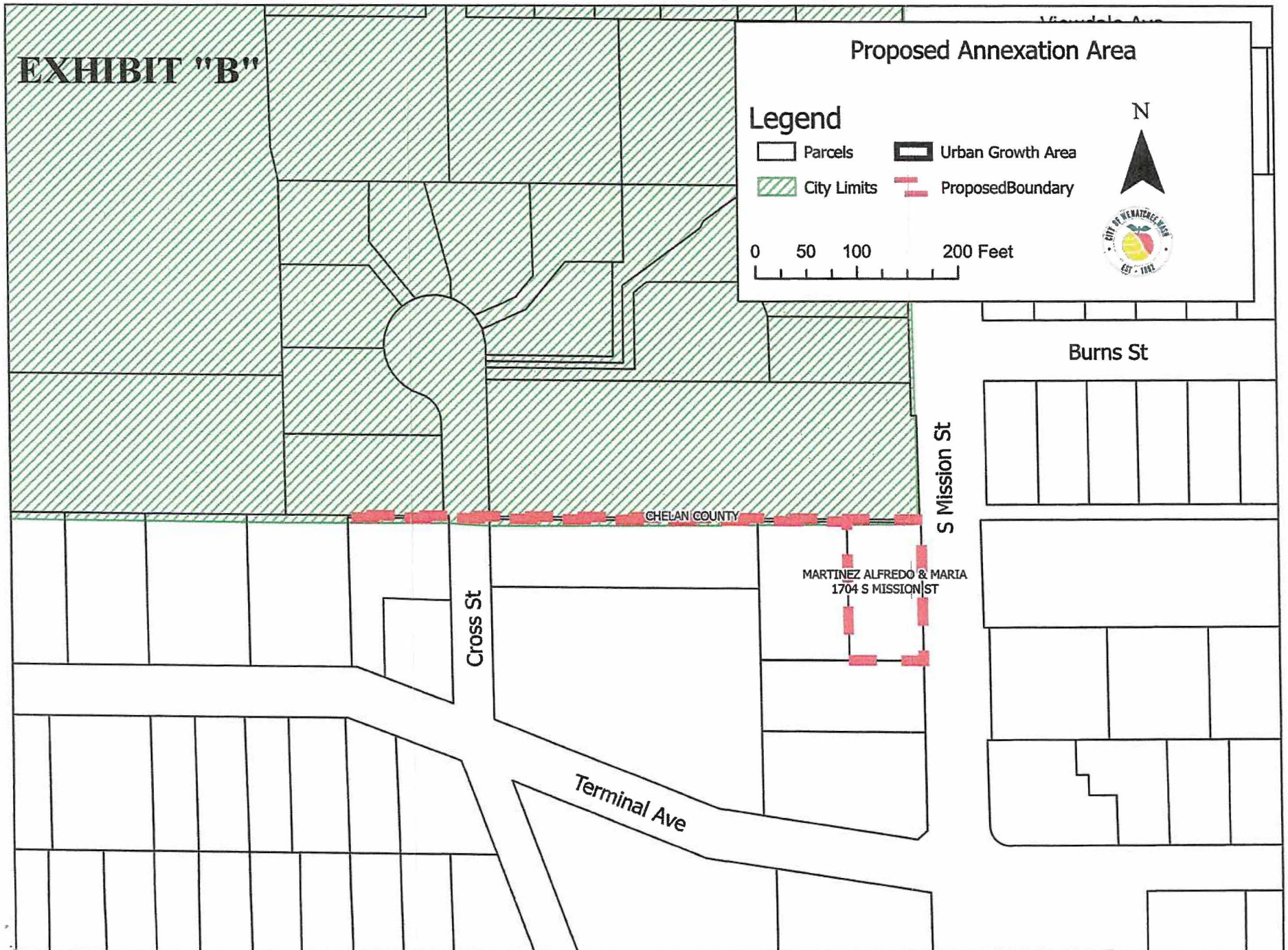
S Mission St

CHELAN COUNTY

MARTINEZ ALFREDO & MARIA  
1704 S MISSION ST

Cross St

Terminal Ave



**Return Address:**

Tammy Stanger, City Clerk  
City of Wenatchee  
PO Box 519  
Wenatchee, WA 98807

**Document Title(s)** (or transactions contained therein):

1. Ordinance No. 2021-21
- 2.
- 3.
- 4.

**Reference Number(s) of Documents assigned or released:**

(on page of document(s))

**Grantor(s)** (last name first, then first name and initial(s))

1. City of Wenatchee
- 2.
- 3.
- 4.

☐ Additional names on page of document.

**Grantee(s)** (last name first, then first name and initial(s))

1. DJML, LLC
- 2.
- 3.
- 4.

☐ Additional names on page of document.

**Legal Description** (abbreviated : i.e. lot, block, plat or section township and range)

Lots, parcels of land, and street right of way located within portions of the southwest quarter of the northwest quarter and the northwest quarter of the southwest quarter of Section 28, Township 23 North, Range 20 East of the Willamette Meridian, Chelan County, Washington.

☒ Additional legal is on page 5-7 of document

**Assessor's Property Tax Parcel/Account Number:** 232028320050; 232028320060;

☐ Additional parcel numbers on page of document 232028320070

**Washington State County Auditor/Recorder's indexing form (cover sheet)**

The Auditor/Recorder will rely on the information provided on the form. The staff will not read the document to verify the accuracy or completeness of the indexing information provided herein.

**EMERGENCY NONSTANDARD REQUEST – SIGN ONLY WHEN RECORDING AS NONSTANDARD**

I am requesting an emergency nonstandard recording for an additional fee of \$50.00 as provided in RCW 36.18.010. I understand that the recording processing requirements may cover up or otherwise obscure some part of the text of the original document.

SIGNATURE

DATE

## **ORDINANCE NO. 2021-21**

**AN ORDINANCE**, providing for the annexation of unincorporated lands located along Horselake Road bordered to the east by parcels in the City otherwise fully bordered by unincorporated parcels and right of way known as the DJML Annexation, subject to the provisions of Ordinance No. 2007-34 and all subsequent amendments thereto.

**WHEREAS**, a petition to annex the real property hereinafter described was filed with the City Council of the City of Wenatchee, signed by owners representing 60% of the assessed valuation in the area for which annexation is petitioned, and

**WHEREAS**, the applicable zoning for the annexed property will be Residential Moderate as designated on the pre-annexation zoning map, and

**WHEREAS**, the City Council of the City of Wenatchee considered all factors relative to the proposed annexation, and

**WHEREAS**, a review proceeding for said annexation is not required pursuant to RCW 35A.14.220.

**NOW, THEREFORE, THE CITY COUNCIL OF THE CITY OF WENATCHEE DO ORDAIN** as follows:

### **SECTION I**

That the following described real property located in Chelan County, Washington, contiguous to the City of Wenatchee, to-wit:

See Exhibit "A" as depicted in Exhibit "B", attached hereto and incorporated herein by reference as if fully set forth;



and each and every part thereof be and the same is hereby annexed to the City of Wenatchee, State of Washington; and that the corporate limits of the City of Wenatchee be and they are hereby extended so as to include the property and territory hereinbefore fully described. That said property be assessed and taxed at the same rate and on the same basis as the property of the City of Wenatchee is assessed and taxed to pay for the now outstanding indebtedness of the City of Wenatchee contracted prior to or existing at the time of this annexation.

## SECTION II

That the property described in Section I hereof be and the same is hereby classified and zoned as Residential Moderate. All such zoning and classification being subject to the provisions of Ordinance No. 2007-34, and all subsequent amendments thereto.

## SECTION III

This Ordinance shall take effect from and after its passage on the later of sixty (60) days after publication of such Ordinance once in The Wenatchee World, the same being the official newspaper of the City of Wenatchee, and the Clerk is hereby directed to cause the same to be so publicized, or sixty (60) days from the date notice of the annexation is provided to the Chelan County Treasurer, Assessor, and light, power and gas distribution businesses.

**PASSED BY THE CITY COUNCIL OF THE CITY OF WENATCHEE**, at a regular meeting thereof, this 8<sup>th</sup> day of July, 2021.

CITY OF WENATCHEE, a Municipal  
Corporation

By: \_\_\_\_\_

  
FRANK J. KUNTZ, Mayor

ATTEST:

By: Tammy D. Stanger  
TAMMY STANGER, City Clerk

APPROVED:

By: Steve D. Smith  
STEVE D. SMITH, City Attorney

**Ordinance No. \_\_\_\_\_**

**EXHIBIT A**

**Boundary Description of Real Property to be Annexed into  
the City of Wenatchee, WA  
May 20, 2021**

**-DJML ANNEXATION -**

Lots, parcels of land, and street right of way located within portions of the southwest quarter of the northwest quarter and the northwest quarter of the southwest quarter of Section 28, Township 23 North, Range 20 East of the Willamette Meridian, Chelan County, Washington, the combined perimeter boundary of said lots, parcels, and streets being more particularly described as follows:

Commencing at the westerly angle point corner on the North line of Lot 8, Replat of Tanda Fellowship Addition, according to the plat thereof recorded August 3, 1983, in Volume 11 of Plats, at pages 34-35, records of said County, said point being the True Point of Beginning;

thence southwesterly along the northwesterly line of Lots 8, 1, 2, and 7, said Replat, to the easterly right of way line of Horse Lake Road; thence across Horse Lake Road to the northeasterly corner of Lot 1A, Short Plat Number 411, recorded July 11, 1978, in Book 755 of Deeds, at pages 1602-1604, under Auditor's File Number 788744, records of said County;

thence southwesterly along the northerly line of said Lot 1A to the southeasterly corner of Lot 1, Quail Hollow, according to the plat thereof recorded October 15, 2003, in Volume 28 of Plats, at pages 116-117, under Auditor's File Number 2158051, records of said County;

thence northwesterly along the easterly line of Lots 1 and 2 and the northwesterly extension of said line across Quail Hollow Lane to the easterly corner of Lot 15, said Quail Hollow;

thence continuing northwesterly along the easterly line of said Lot 15 and the easterly line of Tact 1, said Quail Hollow, to the northeast corner of said Tract, being also the southeast corner of Lot 1, Chelan County Short Plat Number 3498, according to the plat thereof recorded March 31, 1997, in Book 14 of Short Plats, at page 78, under Auditor's File Number 2003206, records of said County;

thence northerly and northwesterly along the easterly and northeasterly line of said Lot 1 to a point of intersection with the southwesterly extension of the northwesterly line of Parcel A, Boundary Line Adjustment Number 2012-201, recorded October 17, 2012, under Auditor's File Number 2369992, records of said County, said point being on the southwesterly right of way line of said Horse Lake Road;

thence northeasterly along said northwesterly line and the southwesterly extension thereof to the westerly corner of said Parcel A, being also a point on the northeasterly right of way of said road;

(DJML Annexation Boundary Description continued)

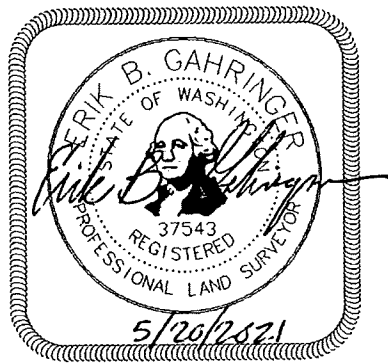
thence northeasterly and northerly along the northwesterly and westerly lines of said Parcel A to the northwest corner thereof;

thence southeasterly along the northerly line of said Parcel A to the northeast corner thereof; thence southwesterly along the easterly line of Parcels A and B, said Boundary Line Adjustment, to an angle point corner of said Parcel B, said corner being also a point on the East-West centerline of said Section 28;

thence easterly along the North line of said Parcel B and said centerline to the True Point of Beginning.

Prepared By: Erik B. Gahringer, PLS

Date: May 20, 2021



48° North  
Professional Land Surveying & Land Use Consulting  
P.O. Box 4266  
Wenatchee, WA 98807-4266  
Phone: (509) 436-1640



Proposed Annexation Area

Legend

- Proposed Boundary
- Urban Growth Area
- Parcels
- Wenatchee River
- City Limits
- Train tracks

0 75 150 300 Feet



DJML LLC

Edgecliff Rd

DJML LLC  
1650 HORSE LAKE RD

DJML LLC  
1644 HORSE LAKE RD

Quail Hollow Ln

Horse Lake Rd

Tanager Ln

W Honeysett Rd

Elijah Ct

Sunrise Cir



# MEMORANDUM

---

Date: January 25, 2016 (*updated March 16, 2022*)

Re: Stormwater Management Program - Internal Coordination Mechanisms

---

## **Description of Coordination among Departments to ensure Municipal Permit Compliance**

One mission for Chelan County's Public Works Department is to meet all stormwater related regulatory requirements set forth in the Eastern Washington Phase II Municipal Stormwater Permit (Municipal Permit) administered by the Department of Ecology. In order to do so, coordinating the implementation and documentation of Municipal Permit requirements is necessary. This document has been prepared to generally describe the responsibilities and activities carried out by each affected department and division that contributes to compliance with the Municipal Permit, which is detailed in Section S5.A.6.b:

*The Stormwater Management Program (SWMP) shall also include coordination mechanisms among departments within each jurisdiction to eliminate barriers to compliance with the terms of this permit. Permittees shall include a written description of internal coordination mechanisms in the Annual Report due no later than March 31, 2021.*

The content in this document is based upon the Municipal Permit requirements and is organized according to the SWMP components required in Section S5.B, S7, S8, and S9:

- Public Education and Outreach (S5.B.1)
- Public Involvement and Participation (S5.B.2)
- Illicit Discharge Detection and Elimination (S5.B.3)
- Construction Site Stormwater Runoff Control (S5.B.4)
- Post-Construction Stormwater Management for New Development and Redevelopment (S5.B.5)
- Municipal Operations and Maintenance (S5.B.6)
- Compliance with Total Maximum Daily Load (S7)
- Monitoring and Assessment (S8)
- Reporting and Recordkeeping (S9)

The Public Works Department is responsible for informing staff of permit requirements, providing training when necessary, and ensuring mechanisms for coordination are in place. Most County departments have some responsibility under this permit and interdepartmental coordination and ongoing communication is the key to successful permit compliance. County staff communicates regularly in person, by phone, and via email regarding the stormwater program. The following is a list of departments in the County that oversee numerous programs that are most affected by the Municipal Permit:

### Public Works Department

- Surface and Stormwater Management Utility
- Street maintenance
- Administration

- Engineering
- Construction inspection
- Geographic information services
- Survey
- Solid Waste
- Traffic enforcement (right-of-way violations)
- Flood Control Zone District administration

#### Community Development Department

- Building Official
- Building inspectors

#### Sheriff's Department

- Code Enforcement
- Emergency Management

#### Administration

- Board of County Commissioners
- Campus Facilities Maintenance
- Parks and Open Space (Ohme Gardens & Wenatchee River County Park)

Below is a table that summarizes where the county's current Municipal Permit requirements overlap with other county departments.

Table 1 – SWMP Coordination Summary		
Permit Section	Title	Contributing and Coordinating Departments
S5.B.1	Public Education and Outreach	Public Works Department Flood Control Zone District Community Development Department Natural Resource Department
S5.B.2	Public Involvement and Participation	Public Works Department Information Technology Administration (County Commissioners)
S5.B.3	Illicit Discharge Detection and Elimination	Public Works Department Flood Control Zone District Community Development Department Natural Resource Department Sheriff's Office/Emergency Management Administration (Facilities Maintenance) Prosecuting Attorney
S5.B.4	Construction Site Stormwater Runoff Control	Public Works Department Flood Control Zone District Community Development Department Natural Resource Department Sheriff's Office Prosecuting Attorney



S5.B.5	Post-Construction Stormwater Management for New Development and Redevelopment	Public Works Department Flood Control Zone District Community Development Department Natural Resource Department Sheriff's Office Prosecuting Attorney
S5.B.6	Municipal Operations and Maintenance	Public Works Department Flood Control Zone District Administration (Facilities Maintenance, Parks and Open Space)
S7	Compliance with Total Maximum Daily Load	Public Works Department Natural Resource Department
S8	Monitoring and Assessment	Public Works Department
S9	Reporting and Recordkeeping	Public Works Department

### **Applicability**

These components cover a wide variety of stormwater topics and require coordination and communication amongst Chelan County departments to remain informed and compliant the Municipal Permit conditions. The follow section describe how various departments coordinate to meet the intent of the Municipal Permit.

#### **Public Education and Outreach (S5.B.1)**

The Municipal Permit requires implantation of an education and outreach program that is designed to reduce behaviors and practices that contribute to or cause stormwater pollution. County employees, contractors, engineers, businesses, property managers, homeowners, school aged children, and the general public are all target audiences. Topics of public education include, but are not limited to: general impacts of stormwater on surface waters, impacts of illicit discharges and how to report them, maintenance of treatment and flow control stormwater facilities, best management practices (BMPs), natural yard care, mobile businesses, portable toilet placement, and vehicle maintenance.

The Environmental Manager within the Public Works Department with assistance from the Wenatchee Valley Stormwater Technical Advisory Committee (WVSTAC) strategizes, develops, and prepares public education materials. The Public Works Department manages the County's stormwater hotline and responds to reported stormwater incidents.

#### **Public Involvement and Participation (S5.B.2)**

The Environmental Manager ensures the public has the opportunity to participate in the decision-making process involving the development and implementation of the Municipal Permit's related activities and programs. This is accomplished by making the SWMP document and the most recent Annual Report available to the public on the WVSTAC website, annual steering committee meeting, and providing for program input by County Commissioner's.

#### **Illicit Discharge Detection and Elimination (S5.B.3)**

Chelan County implements an Illicit Discharge Detection & Elimination (IDDE) program designed to prevent, detect, characterize, and eliminate illicit connections and illicit discharges into the county's stormwater system (MS4) (Chelan County Code chapter 13.14). Required components of the program include mapping



the MS4, development of a regulatory and enforcement mechanism, and an ongoing process to identify and eliminate sources of stormwater pollution. The County's ordinance, which prohibits non-stormwater discharges, spills, illicit connections, and illegal dumping into the stormwater system is enforced by either by the Public Works Department (Environmental Manager), Code Enforcement Officer, Sheriff's Department, or the Prosecuting Attorney.

The Environmental Manager updates county code, oversees enforcement actions, reports to Ecology on spills and illicit discharges, coordinates staff training and establishes priority areas. Other Public Works staff assist in field surveys, complaint investigation, initial enforcement action, updating the stormwater system map, monitoring the stormwater hotline and inspecting outfalls and water quality facilities. Under the direction of the County Engineer, GIS staff are responsible for adding new subdivisions and stormwater projects to the stormwater system map, managing the geodatabase and providing technical support to staff. Under the direction of the Road Supervisor, the Street Maintenance Department responds to spills and provides information to the Environmental Manager. Staff in all divisions of Public Works are responsible for identifying and reporting illicit discharges. In addition, the Sheriff's Office/Emergency Management, the Code Enforcement Officer, and Building Official/Inspectors forward information regarding illicit discharges to the Public Works Department. The public can call the Stormwater Hotline at 509-667-6415 to report and stormwater-related problems and/or concerns.

IDDE training is mostly completed through online or in-person opportunities and organized by the Public Works Department. Public Works is also responsible for recordkeeping of all reported illicit discharges.

Inventory of the county's stormwater infrastructure is conducted by staff within the Public Works Department using survey and GIS data collection technology.

#### **Construction Site Stormwater Runoff Control (S5.B.4)**

Any new construction project that meets the applicability criteria within Chelan County Code chapter 13.16, such as a single-family home, business, apartment building, parking lot, etc., is required to submit drainage plans and reports for review and approval. The Environmental Manager under the direction of the County Engineer is responsible for reviewing all stormwater site plans for development activities and ensuring that projects meet standards in the most current Department of Ecology *Stormwater Management Manual for Eastern Washington*. Public Works conduct inspections for construction site stormwater runoff control, investigation of complaints, and enforcement of county stormwater code. Additionally, the Environmental Manager coordinates with the Sheriff's Office, the Code Enforcement Officer, and also the Building Official/Inspectors for enforcement. Both public and private development must comply with these requirements.

The Environmental Manager coordinates training on construction site stormwater runoff control and is responsible for enforcement beyond the initial steps including notices of violations and other administrative actions. Departments including Engineering, Street Maintenance, Campus Facilities Maintenance, Parks and Open Space, and the Natural Resource Department are all individually responsible for implementing stormwater best management practices on construction projects.

#### **Post-Construction Stormwater Management for New Development and Redevelopment (S5.B.5)**

Post-Construction Stormwater Management for New Development and Redevelopment is found within Chelan County Code chapter 13.18. The Environmental Manager under the direction of the County Engineer reviews post-construction stormwater site plans and manages operations and maintenance agreements for post-construction stormwater facilities and certification of BMP completion. Public Works field staff conduct construction-phase inspections of structural post-construction best management practices as well as follow-up inspections upon completion of construction. Code enforcement for this program element is the responsibility of the Public Works Department with assistance from the Sheriff's Office, Code Compliance Officer, Building Official/Inspectors, and Prosecuting Attorney.

**Municipal Operations and Maintenance (S5.B.6)**

All departments associated with Chelan County are responsible for implementation of the Chelan County's Stormwater Pollution Prevention Operations and Maintenance Plan. The Road Maintenance division of the Public Works Department is responsible for the maintenance of the County's drainage infrastructure, which includes catch basins, pipes, open ditches, as well as public retention/detention facilities. Maintenance staff annually inspects County owned stormwater infrastructure, while treatment and flow control facilities and stormwater retention/detention ponds are inspected by the Environmental Manager. Maintenance requirements for facilities are consistent with the adopted standards found in the *Stormwater Management Manual for Eastern Washington*. The Public Works Department oversees the GIS database mapping of the MS4.

Other county departments, such as Facilities Maintenance and Parks and Open Space are provided a copy of the Stormwater Pollution Prevention Plan.

**Compliance with Total Maximum Daily Load (S7)**

This Municipal Permit component requires the county to follow specific TMDL requirements identified in Appendix 2, including recordkeeping, annually reporting the status of TMDL implementation, and summarizing relevant activities to address the applicable TMDL parameter(s). Under the direction of the County Engineer, the Environmental Manager oversees compliance with this Municipal Permit component. If necessary, the Public Works Department may coordinate with the county's Natural Resource Department for different aspects of adhere to TMDL requirements.

Currently, the county does not have a TMDL in the Municipal Permit boundary.

**Monitoring and Assessment (S8)**

The Environmental Manager represents Chelan County on regional and local stormwater groups for the purpose of complying with the requirement to complete Stormwater Management Program Effectiveness Studies for the current permit cycle.

During the 2014 – 2019 Municipal Permit cycle, the WVSTAC studied regional carpet cleaning companies to gain a better understanding of their knowledge of the stormwater program. For the 2019 – 2024 Municipal Permit Cycle, the WVSTAC is interested in further investigating homeowners associations as it relates to operation and maintenance of private BMPs.

**Reporting and Recordkeeping (S9)**

The Annual Report is prepared by Chelan County staff and is due on March 31 of each year. The report consists of questions related to compliance with the requirements and deadlines in the Municipal Permit. Public Works coordinates with the other affected department staff to collect data that is tracked for compliance. Additionally, updates to the SWMP occur at this time.

The Environmental Manager prepares the annual report and oversees recordkeeping activities for the stormwater management program with assistance from Public Works staff, including the survey and GIS division.

## **2021 Public Education, Outreach Programs and Stewardship Activities Chelan County**

The Wenatchee Valley Stormwater Management Program was promoted by jurisdiction staff at the following community events and activities in 2021:

- Wenatchee School District's 21<sup>st</sup> Century Community Learning Center Program (3<sup>rd</sup> through 5<sup>th</sup> grade)- Participated in two sessions, met with approximately 100 students weekly from 4/19/2021-5/24/2021 and 11/17/2021-12/31/2021.
- Concrete Handling postcard for concrete contractors. Sent postcard in early July to 32 contractors.
- Pet waste flagging in parks
- Radio advertisement on KOHO FM and SUNNY FM Stations for pet waste handling (April 2021), general stormwater information (July 2021), and fall leaf management (October 2021)
- Seasonal Website updates
- Winter outreach to active construction sites
- Social Media posting for fall leaf management and pet waste management
- Sustainable Wenatchee Earth Day Fair- Held April 17,2021 at the Pybus Public Market. Estimated to have approximately 1,000 Visitors
- "Dump Smart" carpet cleaner post card sent September 2021 to 15 local carpet cleaners

Information was also provided at Wenatchee's Public Services Center at 1350 McKittrick Street, Chelan County's Public Works Department at 316 Washington Street, Suite 402 and online at [www.wenatcheewa.gov/wvstac](http://www.wenatcheewa.gov/wvstac). In 2021 the Wenatchee Valley Stormwater webpage received 431 hits.

The local Phase II permittees again provided a survey online through the end of the year.

### Illicit Discharge Detection and Elimination Reporting Log

[illegible]

## Summary of Chelan County Participation in Effectiveness Study

In 2021, the City of Wenatchee, Chelan County, City of East Wenatchee, Douglas County, and City of Pullman began work on the Private BMP Owner Awareness Effectiveness Study. The City of Wenatchee is acting as the Lead Agency for the Study. On March 16, 2021, the City submitted an Effectiveness Study Description of Participant Roles through the Ecology Water Quality Web Portal. The City worked with the other jurisdictions to submit the Detailed Study Design Proposal on March 31, 2021. The jurisdictions also finalized an interlocal agreement in September of 2021 for the effectiveness study. Additionally, the jurisdictions worked together to complete a first submittal of the Quality Assurance Project Plan in November of 2021. Following the initial submittal, the City addressed the comments provided by the Department of Ecology.