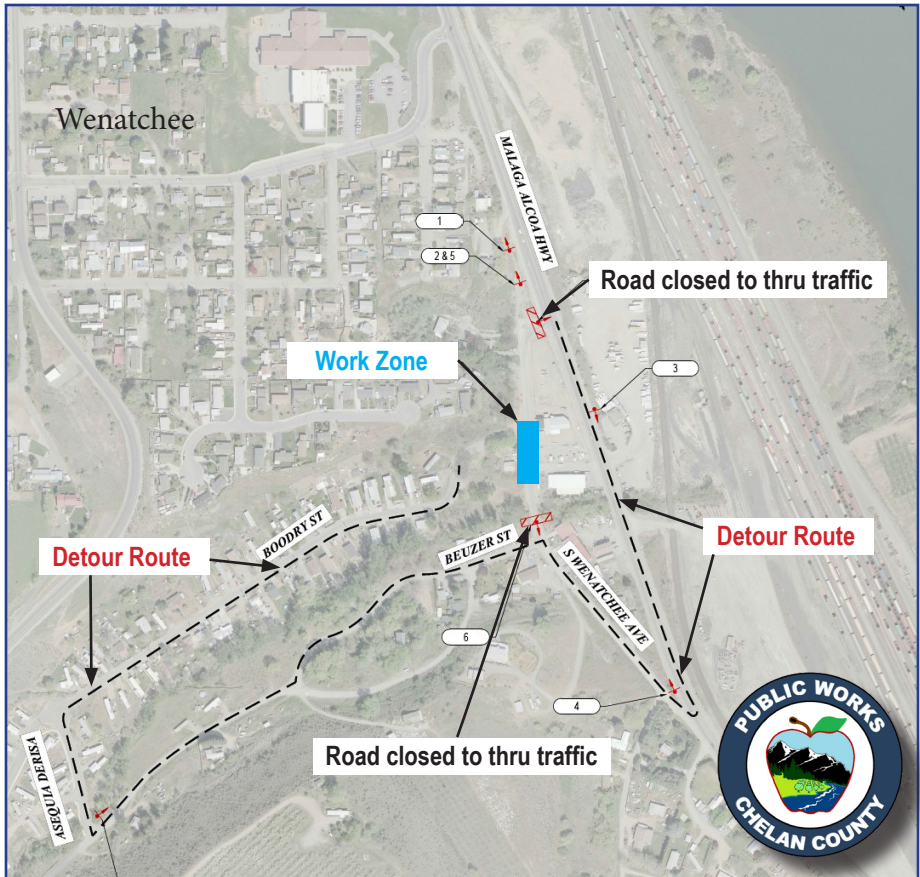


# Squilchuck Creek Outfall Retrofit Detour Map



The intersection and a portion of South Wenatchee Road will be closed during the work, which begins the week of Nov. 15 and should take about two weeks. Local traffic, which includes property owners, businesses, delivery services and emergency services, will have access to their properties. With South Wenatchee Avenue closed to through traffic at Malaga Alcoa Highway, motorists who don't live in the project area will need to follow detour signs south to South Wenatchee Avenue and Beuzer Street. The detour route then follows Beuzer Street to Boodry Street.