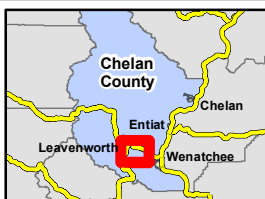
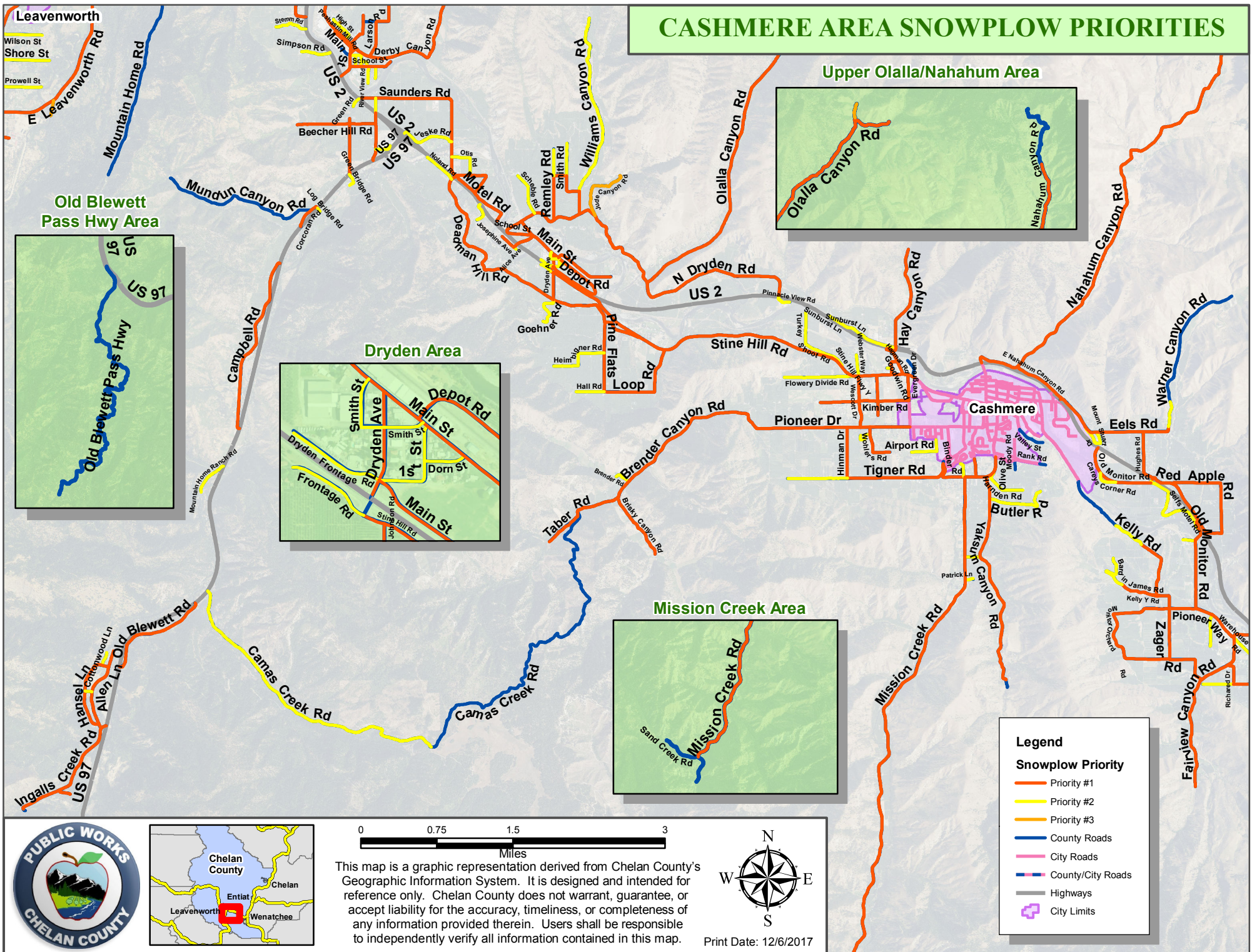
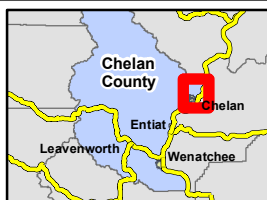
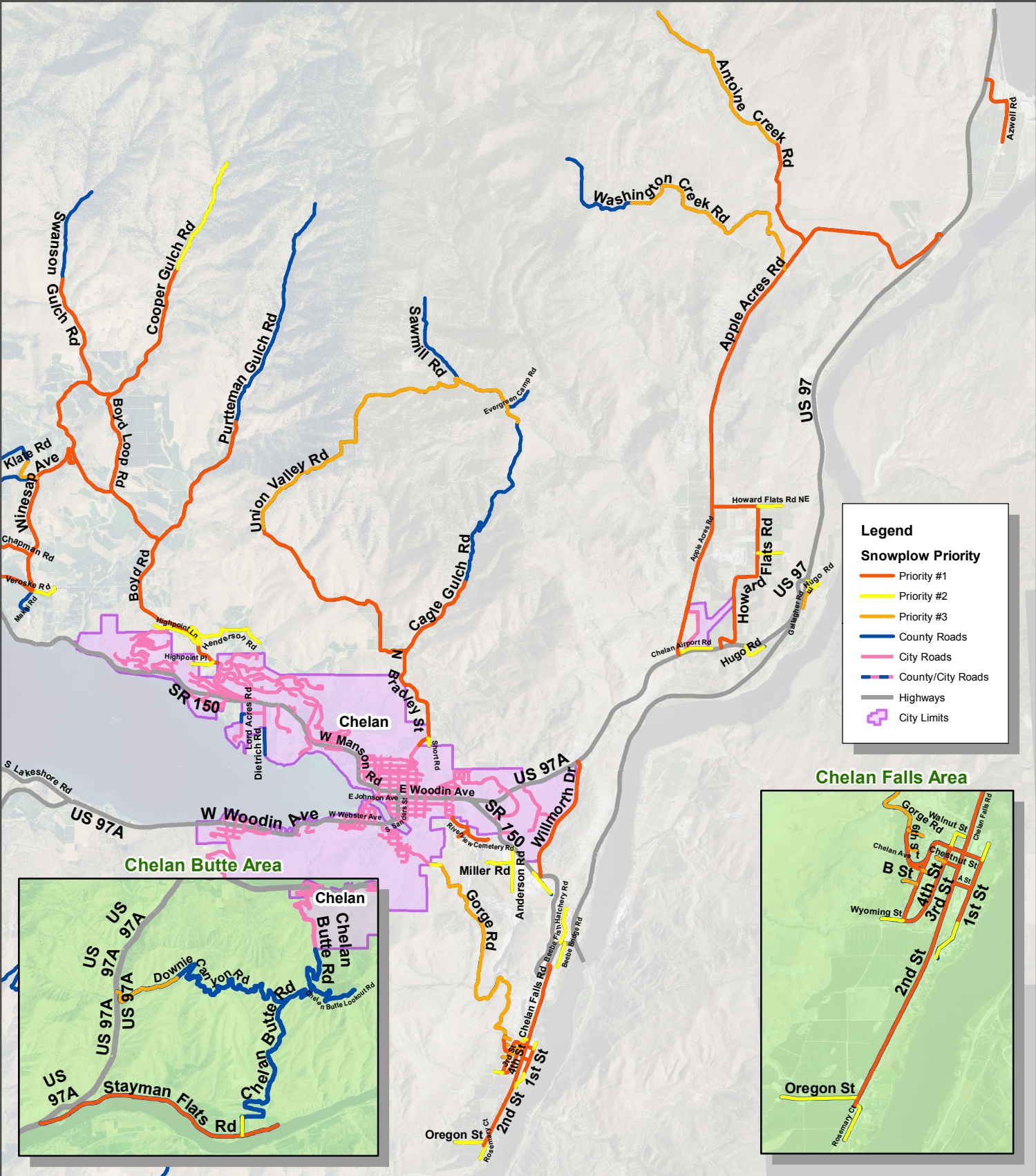


CASHMERE AREA SNOWPLOW PRIORITIES

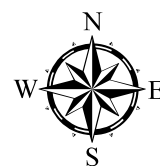


This map is a graphic representation derived from Chelan County's Geographic Information System. It is designed and intended for reference only. Chelan County does not warrant, guarantee, or accept liability for the accuracy, timeliness, or completeness of any information provided therein. Users shall be responsible to independently verify all information contained in this map.

CHELAN AREA SNOWPLOW PRIORITIES

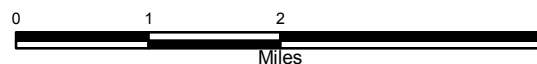
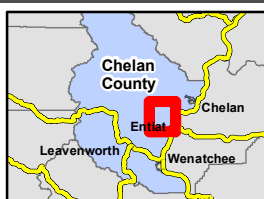
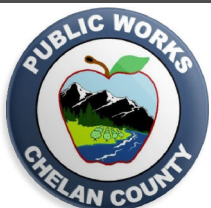
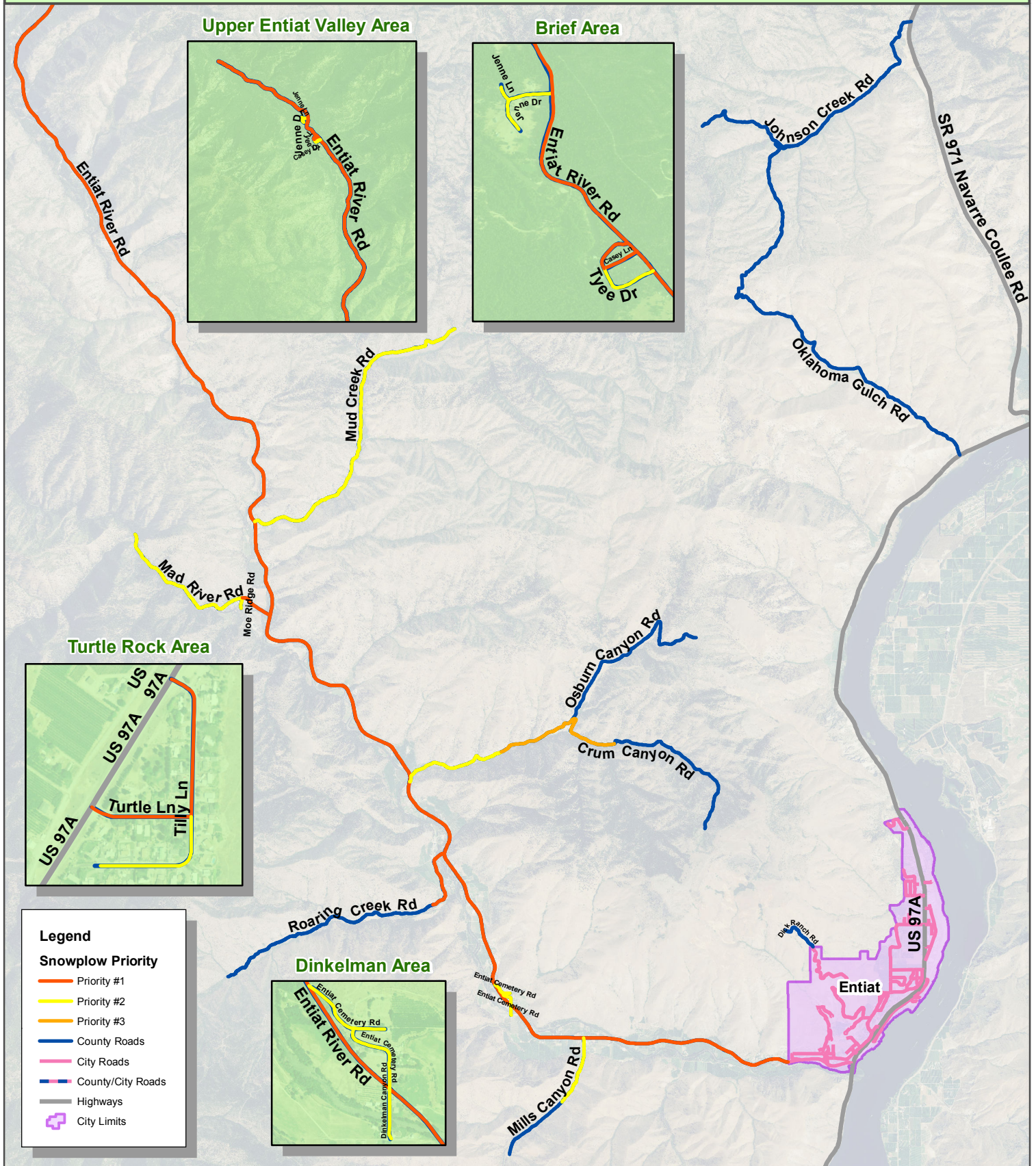


This map is a graphic representation derived from Chelan County's Geographic Information System. It is designed and intended for reference only. Chelan County does not warrant, guarantee, or accept liability for the accuracy, timeliness, or completeness of any information provided therein. Users shall be responsible to independently verify all information contained in this map.



Print Date: 12/6/2017

ENTIAT AREA SNOWPLOW PRIORITIES

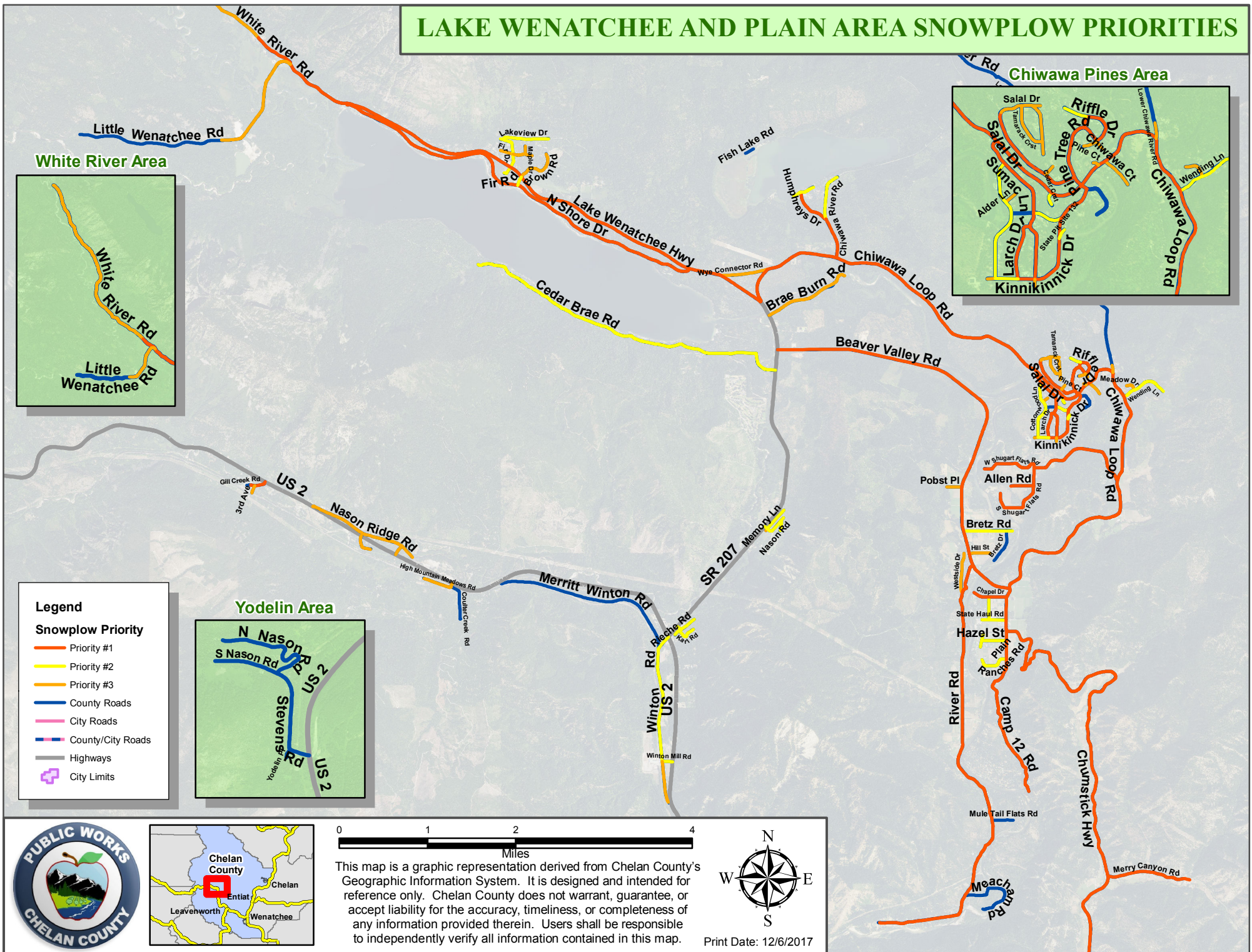


This map is a graphic representation derived from Chelan County's Geographic Information System. It is designed and intended for reference only. Chelan County does not warrant, guarantee, or accept liability for the accuracy, timeliness, or completeness of any information provided therein. Users shall be responsible to independently verify all information contained in this map.

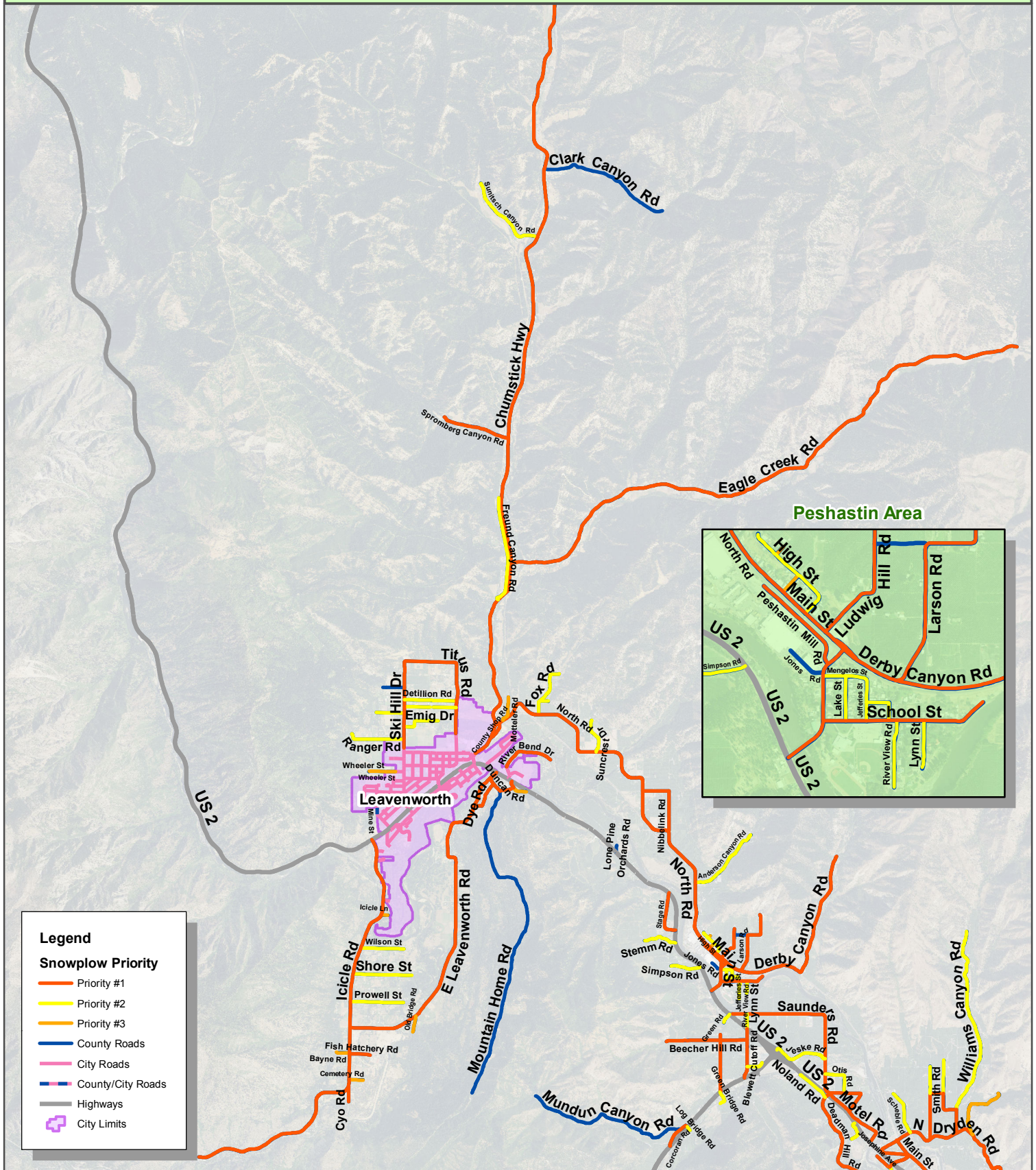


Print Date: 12/6/2017

LAKE WENATCHEE AND PLAIN AREA SNOWPLOW PRIORITIES



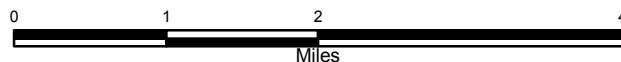
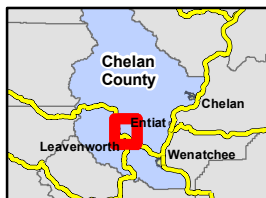
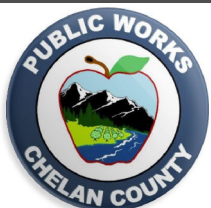
LEAVENWORTH AREA SNOWPLOW PRIORITIES



Legend

Snowplow Priority

- Priority #1
- Priority #2
- Priority #3
- County Roads
- City Roads
- County/City Roads
- Highways
- City Limits



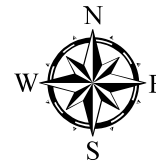
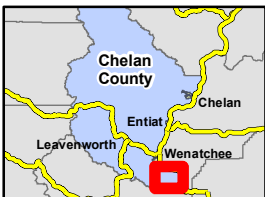
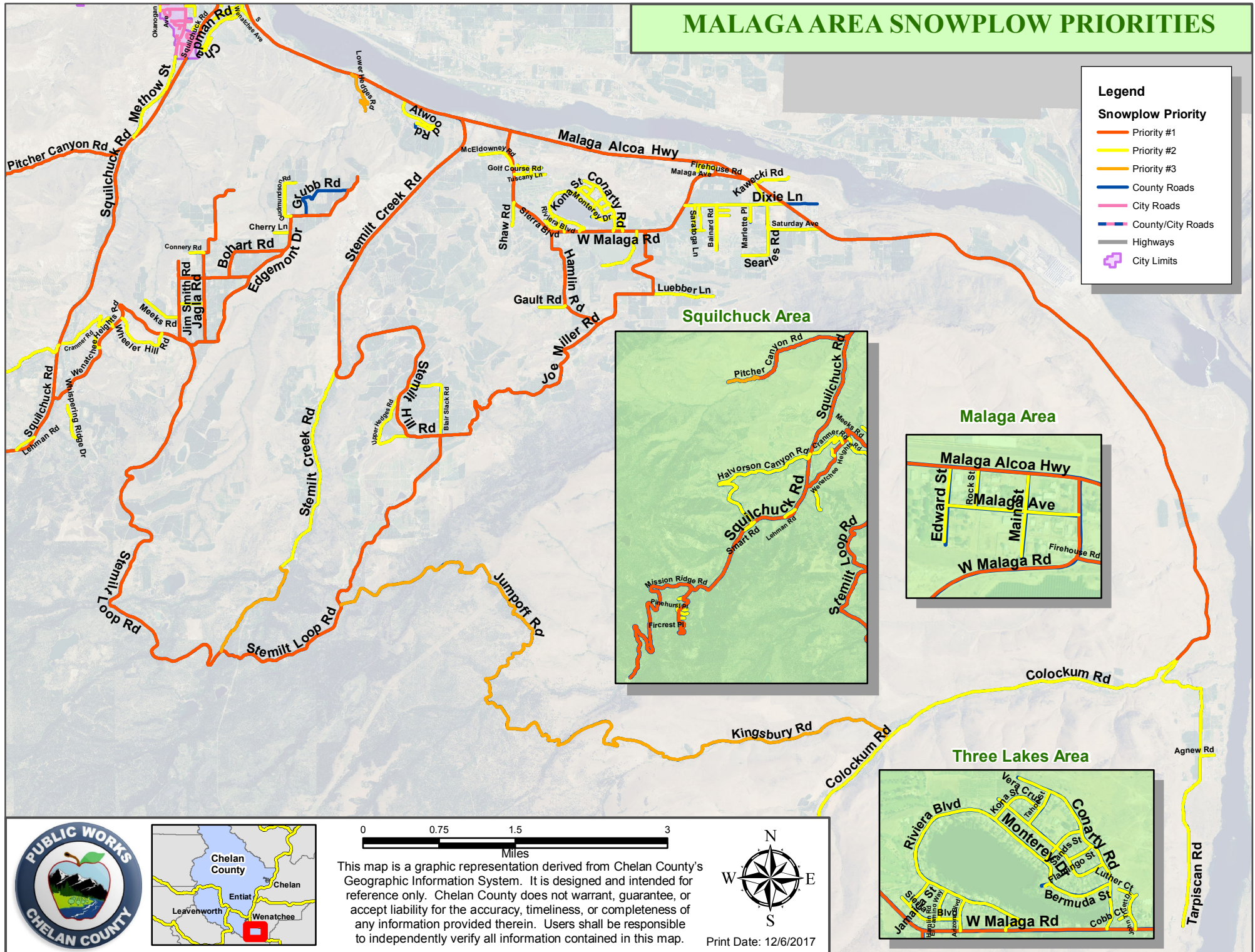
This map is a graphic representation derived from Chelan County's Geographic Information System. It is designed and intended for reference only. Chelan County does not warrant, guarantee, or accept liability for the accuracy, timeliness, or completeness of any information provided therein. Users shall be responsible to independently verify all information contained in this map.



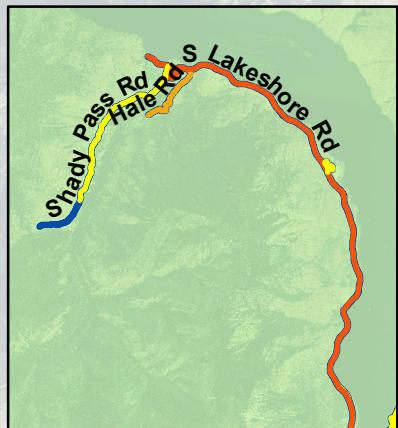
Print Date: 12/6/2017

MALAGA AREA SNOWPLOW PRIORITIES

- Legend**
- Snowplow Priority**
- Priority #1
 - Priority #2
 - Priority #3
 - County Roads
 - City Roads
 - County/City Roads
 - Highways
 - City Limits



S Lakeshore Area



MANSON AREA SNOWPLOW PRIORITIES

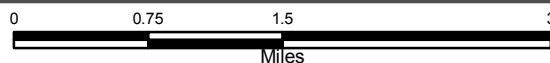
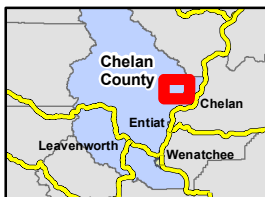
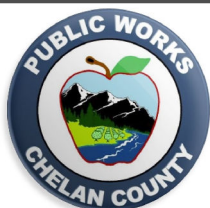
Central Manson Area



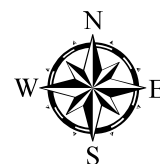
Legend

Snowplow Priority

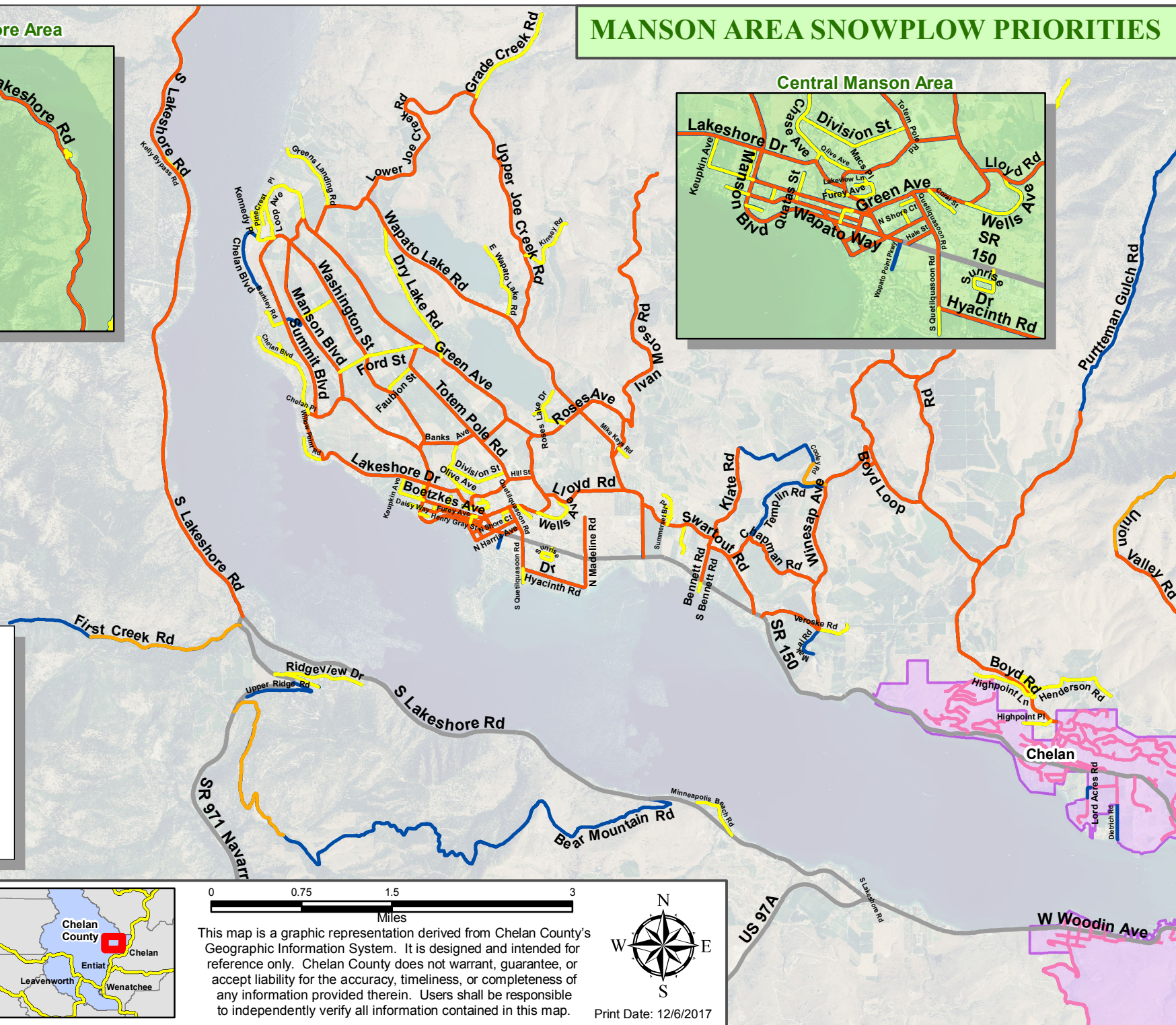
- Priority #1
- Priority #2
- Priority #3
- County Roads
- City Roads
- County/City Roads
- Highways
- City Limits



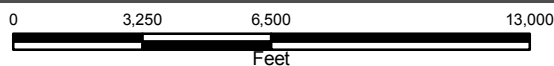
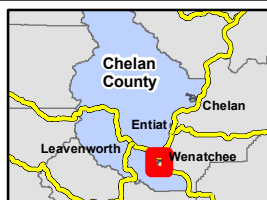
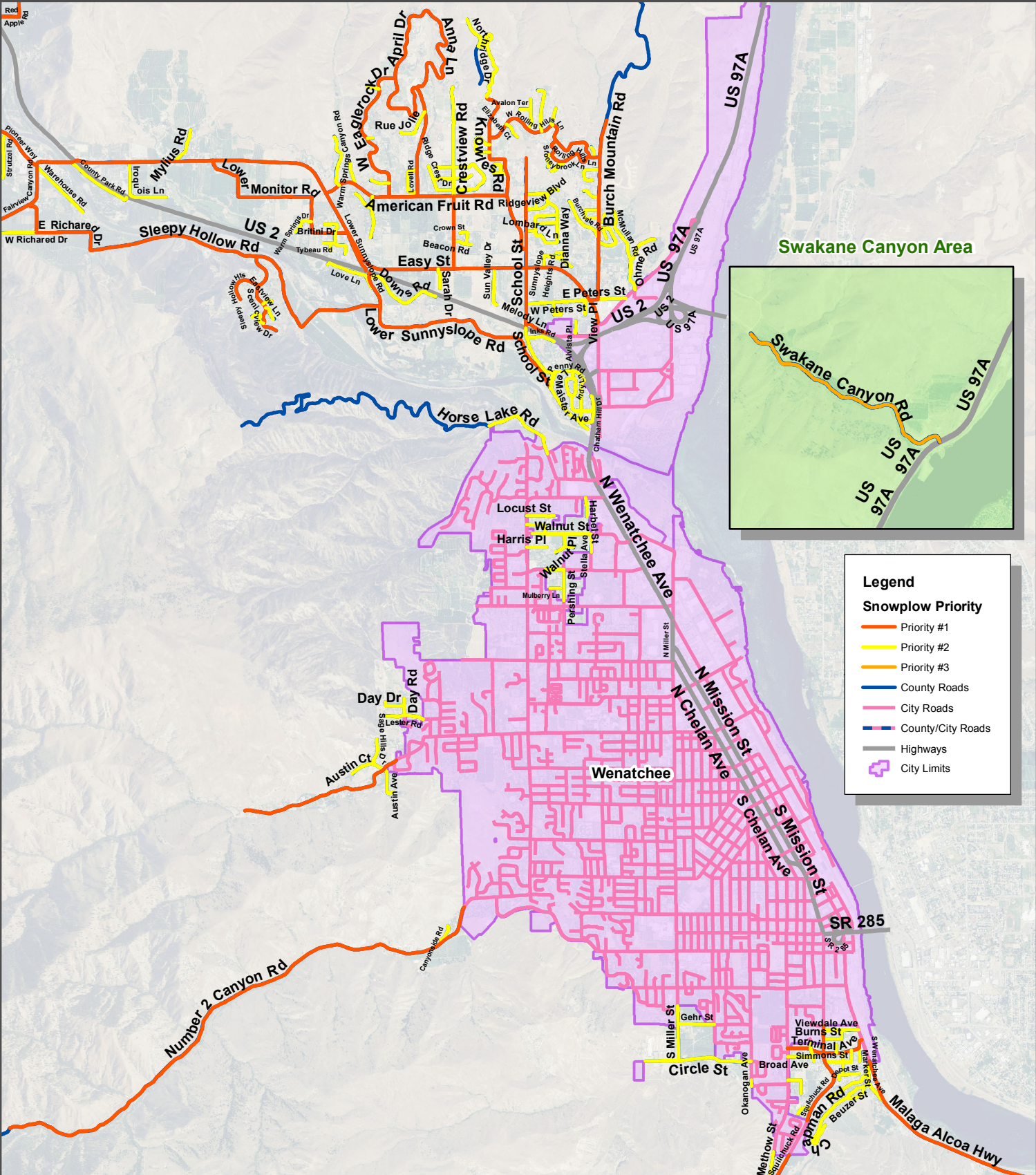
This map is a graphic representation derived from Chelan County's Geographic Information System. It is designed and intended for reference only. Chelan County does not warrant, guarantee, or accept liability for the accuracy, timeliness, or completeness of any information provided therein. Users shall be responsible to independently verify all information contained in this map.



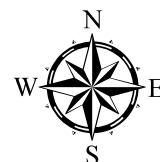
Print Date: 12/6/2017



WENATCHEE AREA SNOWPLOW PRIORITIES



This map is a graphic representation derived from Chelan County's Geographic Information System. It is designed and intended for reference only. Chelan County does not warrant, guarantee, or accept liability for the accuracy, timeliness, or completeness of any information provided therein. Users shall be responsible to independently verify all information contained in this map.



Print Date: 12/6/2017