

TECHNICAL SPECIFICATIONS
DIVISION 8
MISCELLANEOUS CONSTRUCTION

Section 8-21 Permanent Signing

8-21.1 Description

Section 8-21.2 is supplemented with the following:

Details of the signs to be fabricated are shown in the exhibits following these special provisions.

8-21.2 Materials

Section 8-21.2 is supplemented with the following:

Upon award of the contract, the County will supply the Contractor with a JPEG image file of each sign to use in sign fabrication.

The signs shall meet the following requirements:

1. All sign faces shall be constructed from aluminum sign blanks, 0.125" thick.
2. Reflective sheeting shall meet Section 9-28 of the Standard Specifications and current edition of the MUTCD retroreflectivity requirements for Type II (Super Engineer Grade).
3. Sign fabrication shall meet Section 9-28 of the Standard Specifications and the current edition of the MUTCD.
4. All reflective sheeting shall have anti-graffiti protection.

8-21.3 Construction Requirements

Section 8-21.3 is supplemented with the following:

Section 8-21.3(13) Proof Copy (New Section)

At no cost to the County, before sign production begins, Contractor shall supply one fullsize proof copy of a 48"x30" Destination Sign to the Engineer for approval of color and image. Deliver proof copy to:

Chelan County Public Works
Attn: Mitch Johnson
316 Washington St. Suite 402
Wenatchee, WA 98801

Submission of the proof copy to the Engineer shall be within ten (10) working days of award of contract.

Approval of proof copy will be within ten (10) working days of receipt.

Section 8-21.3(14) Delivery (New Section)

Signs shall be delivered to the address below no later than February 3, 2014.

The fabricated signs shall be delivered to:

Chelan County Wenatchee Maintenance Shop
210 Easy Street
Wenatchee, WA 98801

Contact: Gary Epoch, Traffic Safety Foreman
509.669.6503

Notice of delivery shall be given one day in advance.

8-21.4 Measurement

Section 8-21.4 is supplemented with the following:

Measurement for Destination Signs – 48”x30” shall be per each.

Measurement for Destination Signs – 48”x30” With Open/Close shall be per each.

Measurement for Logo Signs – 60”x18” shall be per each.

8-21.5 Payment

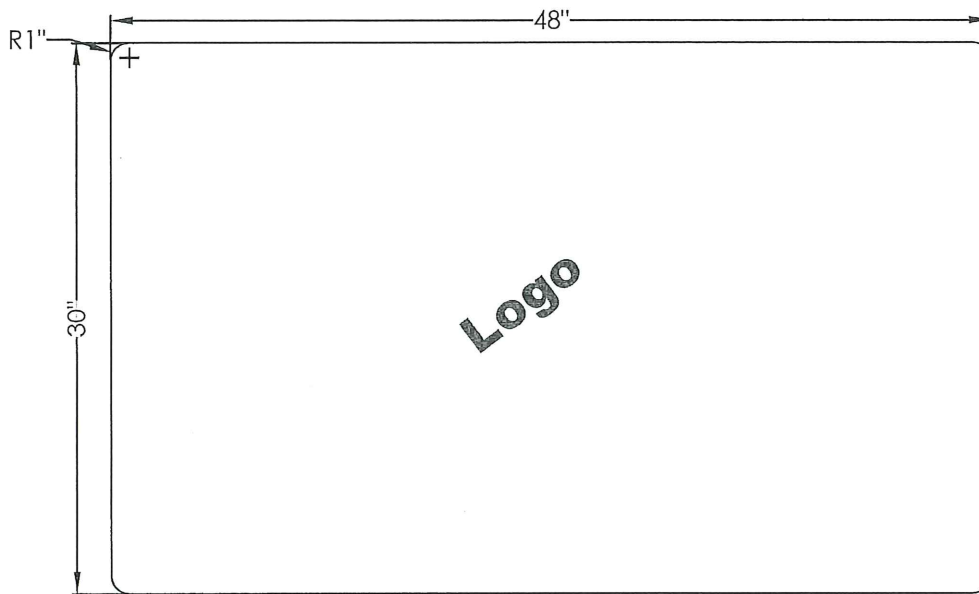
Section 8-21.5 is supplemented with the following:

“Destination Signs – 48”x30””, per each.

“Destination Signs – 48”x30” With Open/Close”, per each.

“Logo Signs – 60”x18””, per each.

P:\CRP\CRP671_Countywide_Tourist_Oriented_Directional_Signs\Drawings\671 - Fabrication Contract.dwg



1. ALL SIGN FACES SHALL BE CONSTRUCTED FROM ALUMINUM SIGN BLANKS 0.125" THICK.
2. REFLECTIVE SHEETING SHALL MEET SECTION 9-28 OF THE STANDARD SPECIFICATIONS AND THE CURRENT EDITION OF THE MUTCD RETROREFLECTIVITY REQUIREMENTS FOR TYPE II (SUPER ENGINEER GRADE).
3. SIGN FABRICATION SHALL MEET SECTION 9-28 OF THE STANDARD SPECIFICATIONS AND THE CURRENT EDITION OF THE MUTCD.
4. ALL REFLECTIVE SIGN SHEETING SHALL HAVE ANTI-GRAFFITI PROTECTION.

48" X 30" Destination Sign

NOT TO SCALE

Countywide Tourist Oriented Directional Signs
C.R.P. 671

**DESTINATION SIGN
DETAILS**

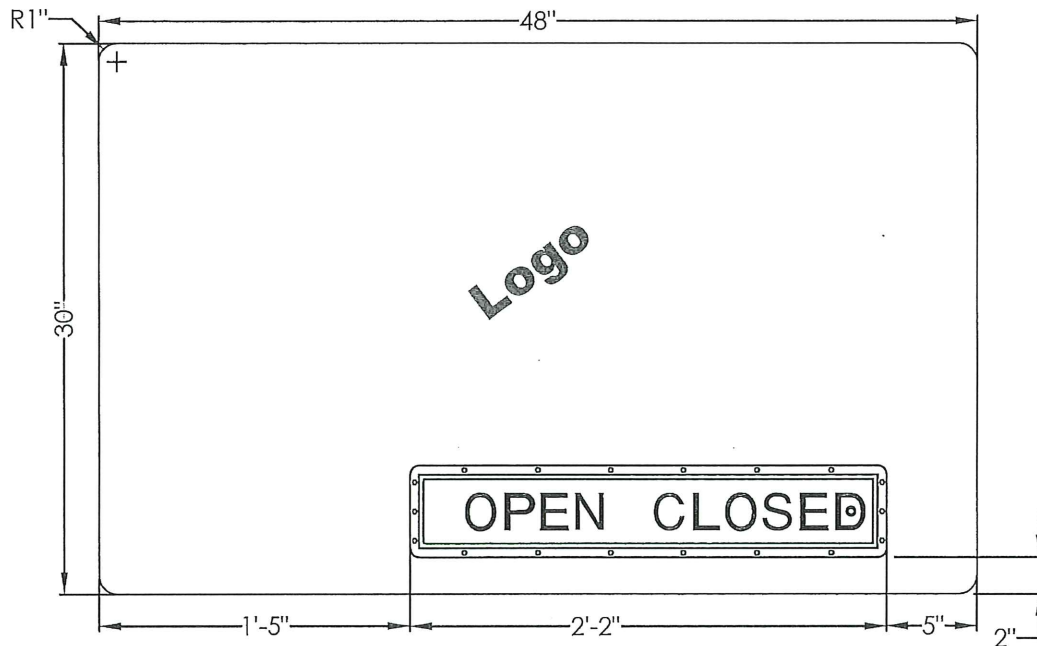
Chelan County Public Works

Phone: (509) 667-6415

Date: 9/25/2013

Sheet 1 of 11

P:\CRP\CRP671_Countywide_Tourist_Oriented_Directional_Signs\Drawings\671 - Fabrication Contract.dwg



1. ALL SIGN FACES SHALL BE CONSTRUCTED FROM ALUMINUM SIGN BLANKS 0.125" THICK.
2. REFLECTIVE SHEETING SHALL MEET SECTION 9-28 OF THE STANDARD SPECIFICATIONS AND THE CURRENT EDITION OF THE MUTCD RETROREFLECTIVITY REQUIREMENTS FOR TYPE II (SUPER ENGINEER GRADE).
3. SIGN FABRICATION SHALL MEET SECTION 9-28 OF THE STANDARD SPECIFICATIONS AND THE CURRENT EDITION OF THE MUTCD.
4. ALL REFLECTIVE SIGN SHEETING SHALL HAVE ANTI-GRAFFITI PROTECTION.

48" X 30" Destination Sign
With Open / Close Slider

NOT TO SCALE

Countywide Tourist Oriented Directional Signs
C.R.P. 671

**DESTINATION SIGN
DETAILS**

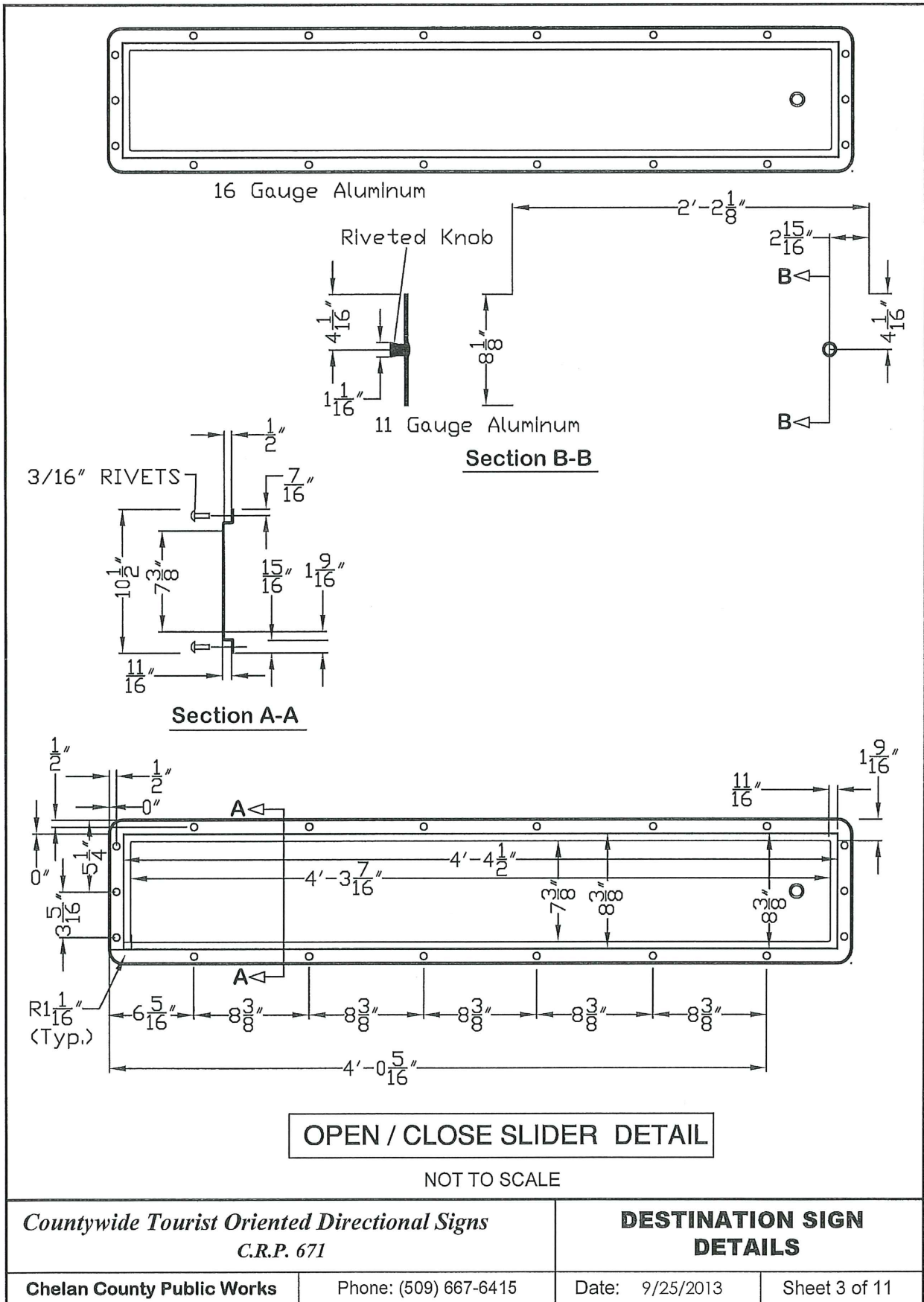
Chelan County Public Works

Phone: (509) 667-6415

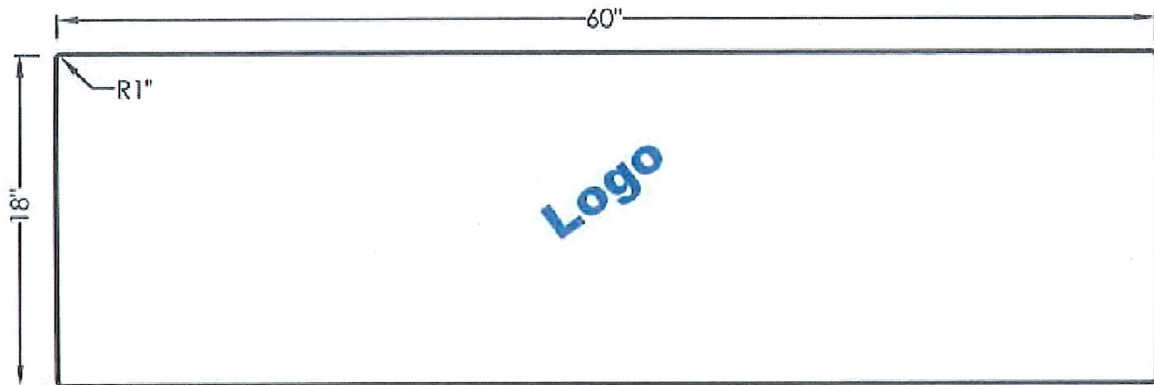
Date: 9/25/2013

Sheet 2 of 11

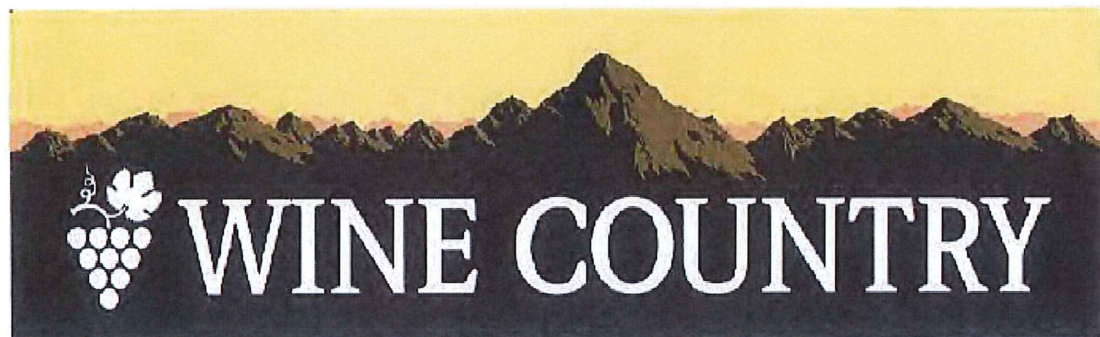
P:\CRP\CRP671_Countywide_Tourist_Oriented_Directional_Signs\Drawings\671 - Fabrication Contract.dwg



P:\CRP\CRP671_Countywide_Tourist_Oriented_Directional_Signs\Drawings\671 - Fabrication Contract.dwg



1. ALL SIGN FACES SHALL BE CONSTRUCTED FROM ALUMINUM SIGN BLANKS 0.125" THICK.
2. REFLECTIVE SHEETING SHALL MEET SECTION 9-28 OF THE STANDARD SPECIFICATIONS AND THE CURRENT EDITION OF THE MUTCD RETROREFLECTIVITY REQUIREMENTS FOR TYPE II (SUPER ENGINEER GRADE).
3. SIGN FABRICATION SHALL MEET SECTION 9-28 OF THE STANDARD SPECIFICATIONS AND THE CURRENT EDITION OF THE MUTCD.
4. ALL REFLECTIVE SIGN SHEETING SHALL HAVE ANTI-GRAFFITI PROTECTION.



Qty. 35

60" X 18" Logo Sign

NOT TO SCALE

Countywide Tourist Oriented Directional Signs
C.R.P. 671

LOGO SIGN DETAILS

Chelan County Public Works

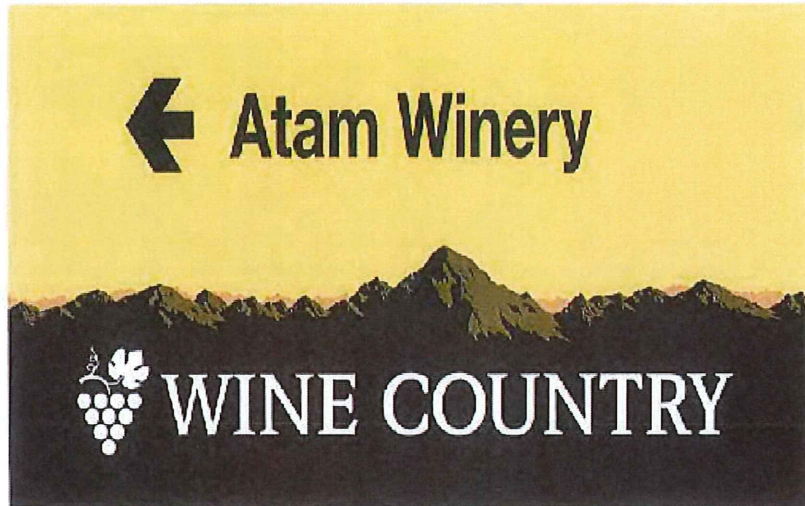
Phone: (509) 667-6415

Date: 9/25/2013

Sheet 4 of 11

P:\CRP\CRP671_Countywide_Tourist_Oriented_Directional_Signs\Drawings\671 - Fabrication Contract.dwg

Qty. 1



Qty. 1



Qty. 1



NOT TO SCALE

Countywide Tourist Oriented Directional Signs
C.R.P. 671

**DESTINATION SIGN
DETAILS**

Chelan County Public Works

Phone: (509) 667-6415

Date: 9/25/2013

Sheet 5 of 11