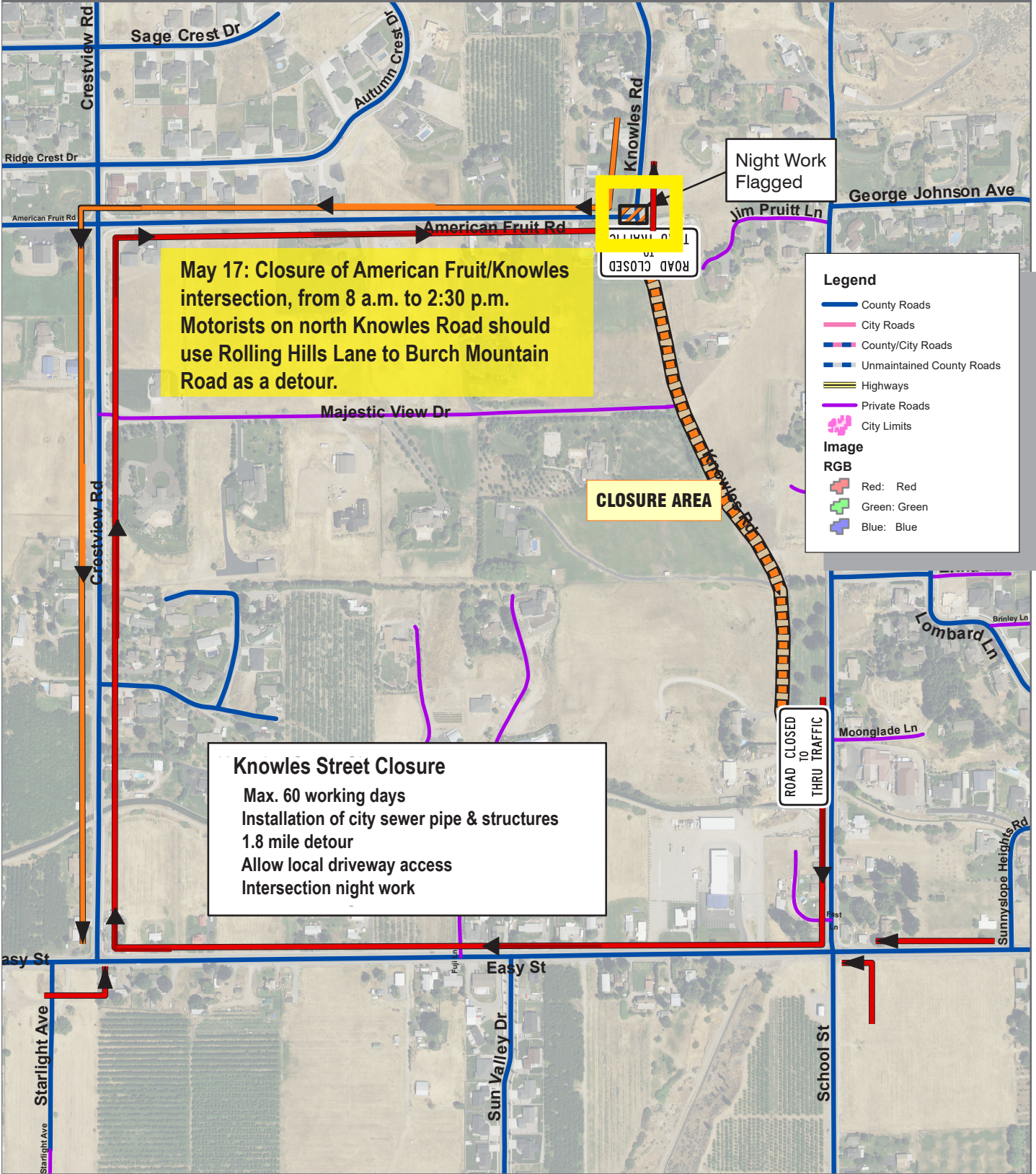


# CHELAN COUNTY PUBLIC WORKS - KNOWLES ROAD DETOUR



**May 17: Closure of American Fruit/Knowles intersection, from 8 a.m. to 2:30 p.m. Motorists on north Knowles Road should use Rolling Hills Lane to Burch Mountain Road as a detour.**

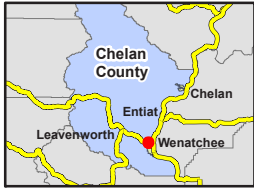
**Knowles Street Closure**  
 Max. 60 working days  
 Installation of city sewer pipe & structures  
 1.8 mile detour  
 Allow local driveway access  
 Intersection night work

**Legend**

- County Roads
- City Roads
- County/City Roads
- Unmaintained County Roads
- Highways
- Private Roads
- City Limits

**Image RGB**

- + Red: Red
- + Green: Green
- + Blue: Blue



This map is a graphic representation derived from Chelan County's Geographic Information System. It is designed and intended for reference only. Chelan County does not warrant, guarantee, or accept liability for the accuracy, timeliness, or completeness of any information provided therein. Users shall be responsible to independently verify all information contained in this map.

Print Date: 9/9/2021