

# TOTEM POLE ROAD IMPROVEMENT PROJECT

Safe,  
Sustainable &  
Integrated  
Multimodal  
Transportation



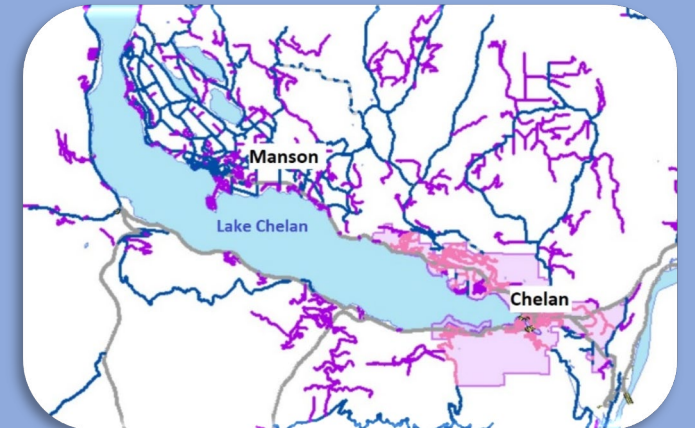
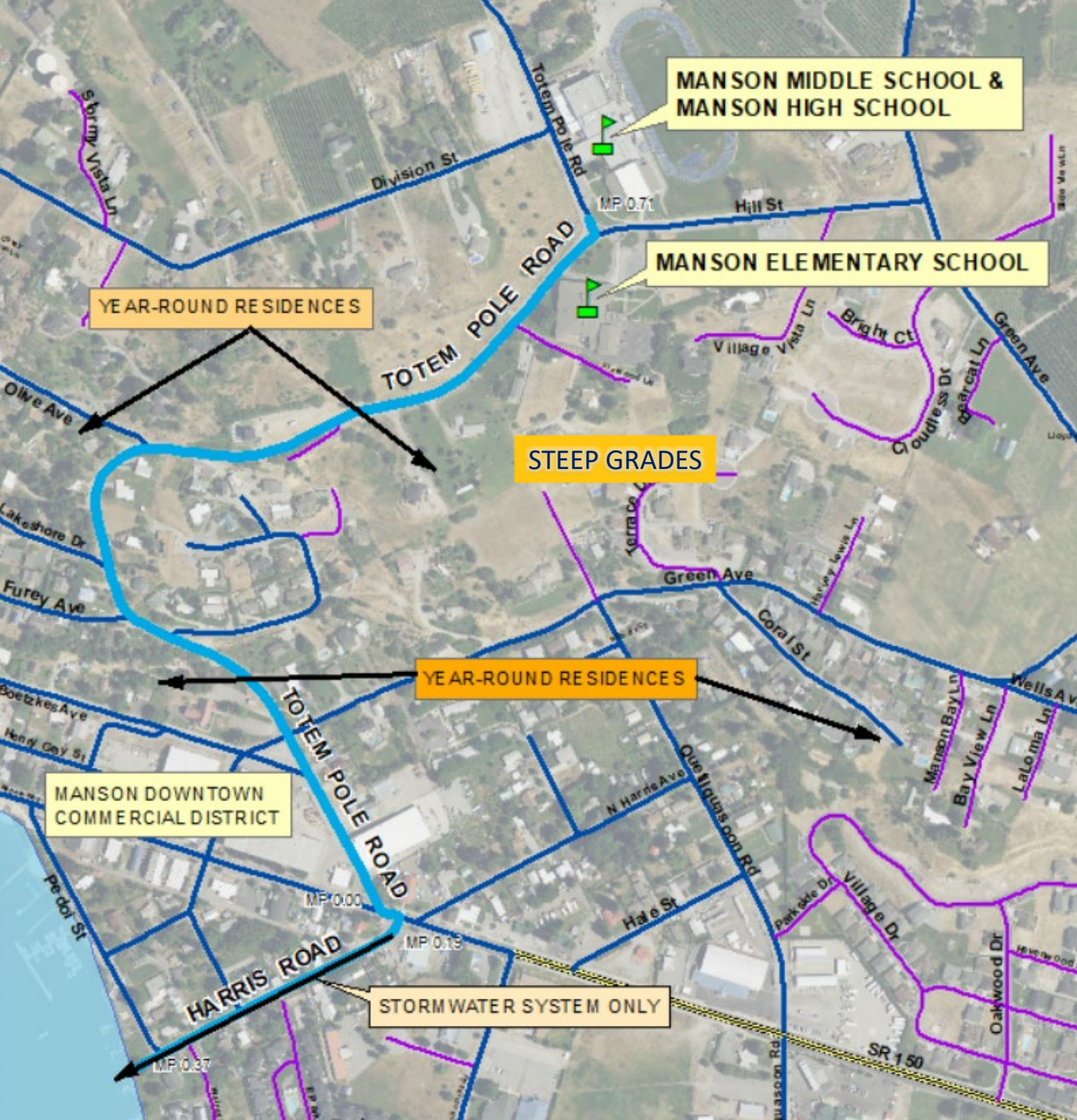
*Eric Pierson, Director/County Engineer Chelan County Public Works*





# A Community Connector

Totem Pole Road is a unique roadway in the small community of Manson. It starts at the entry to the thriving **downtown** and immediately heads east through the **commercial district**. It runs through a dense **residential** area, leading to the local **elementary** and **secondary schools**. Finally, it continues on to **orchard** and **recreational lands**. Perhaps no other road in Manson serves so many purposes.





# Project Funding

<b>PROJECT TOTAL</b>	<b>\$4,997,960</b>
----------------------	--------------------

<b>STBG/TAP</b>	<b>\$2,500,000</b>
-----------------	--------------------

<b>Ecology Water Quality (secured)</b>	<b>\$ 168,750</b>
--	-------------------

<b>Local</b>	<b>\$2,329,210</b>
--------------	--------------------

<b>Total</b>	<b>\$4,997,960</b>
--------------	--------------------



# Manson Schools



“Manson School District houses approximately 650 students ages 3 to 18 here at the top of Totem Pole Road. Currently almost all of those students are transported by bus or personal vehicle because **our roads do not provide safe passage for them .**”

-- Yvonne Walker, Superintendent of the Manson School District



# Current Roadway Conditions

**Totem Pole Road is a narrow, winding roadway with steep grades and a lack of shoulders, sidewalks and pedestrian crossings.**



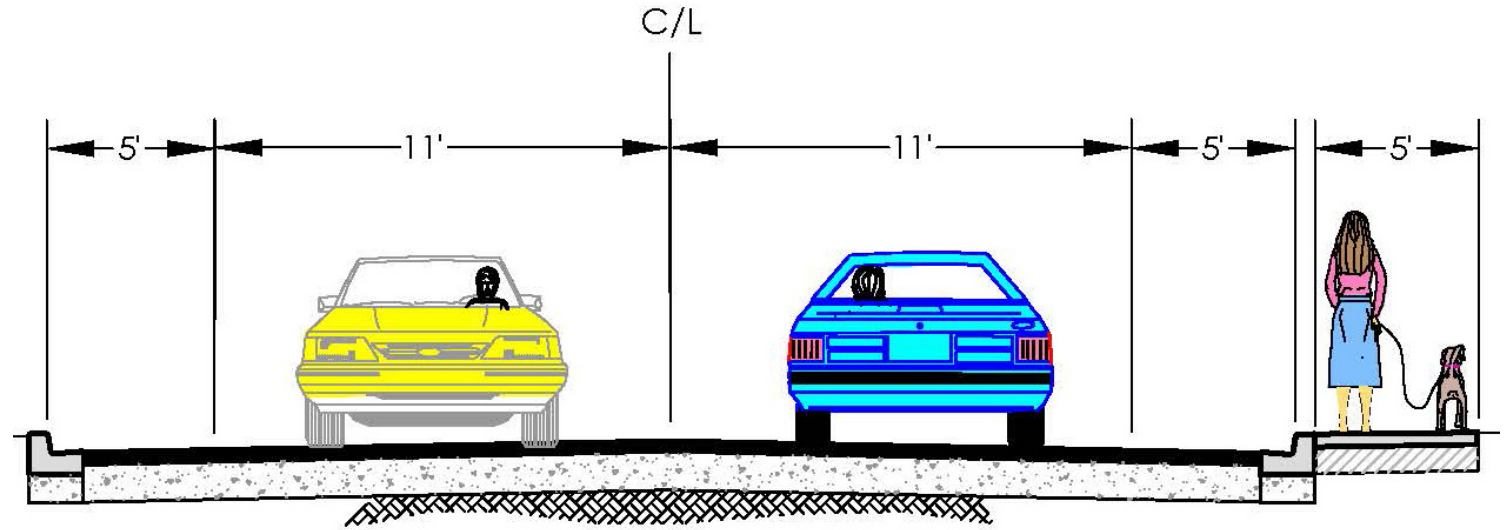




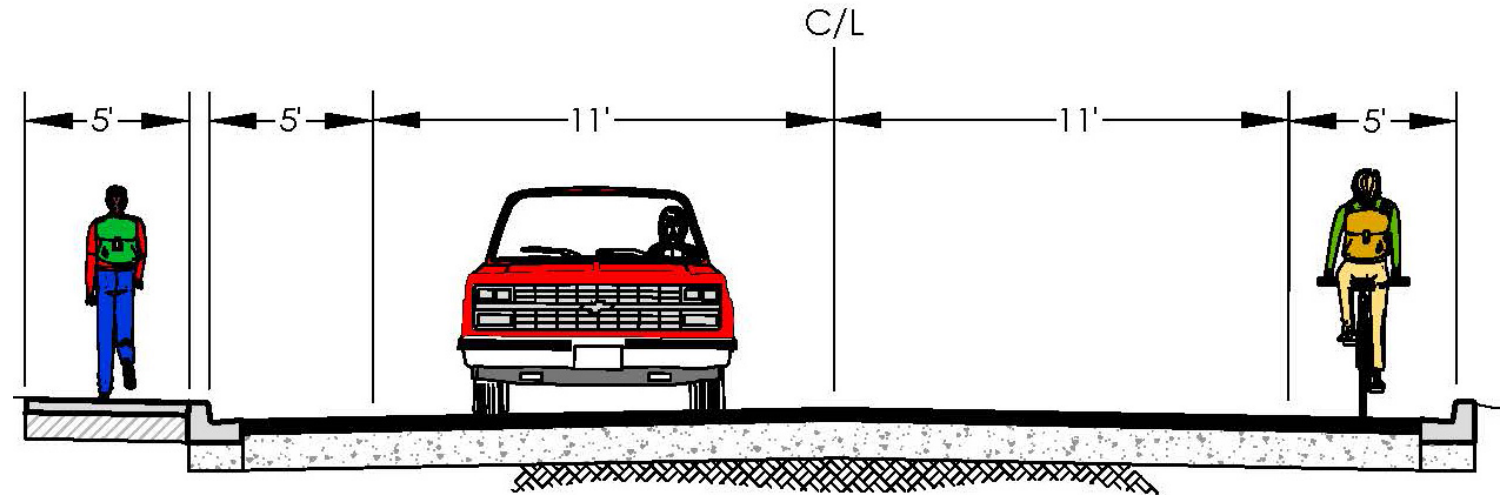


## Project Outcomes

- 11-foot travel lanes
- 5-foot bike lanes
- Sidewalk on one side
- ADA ramps at intersections
- Mid-block school crossings with pedestrian-activated crossing systems
- Curb and gutter on both sides
- Stormwater upgrades

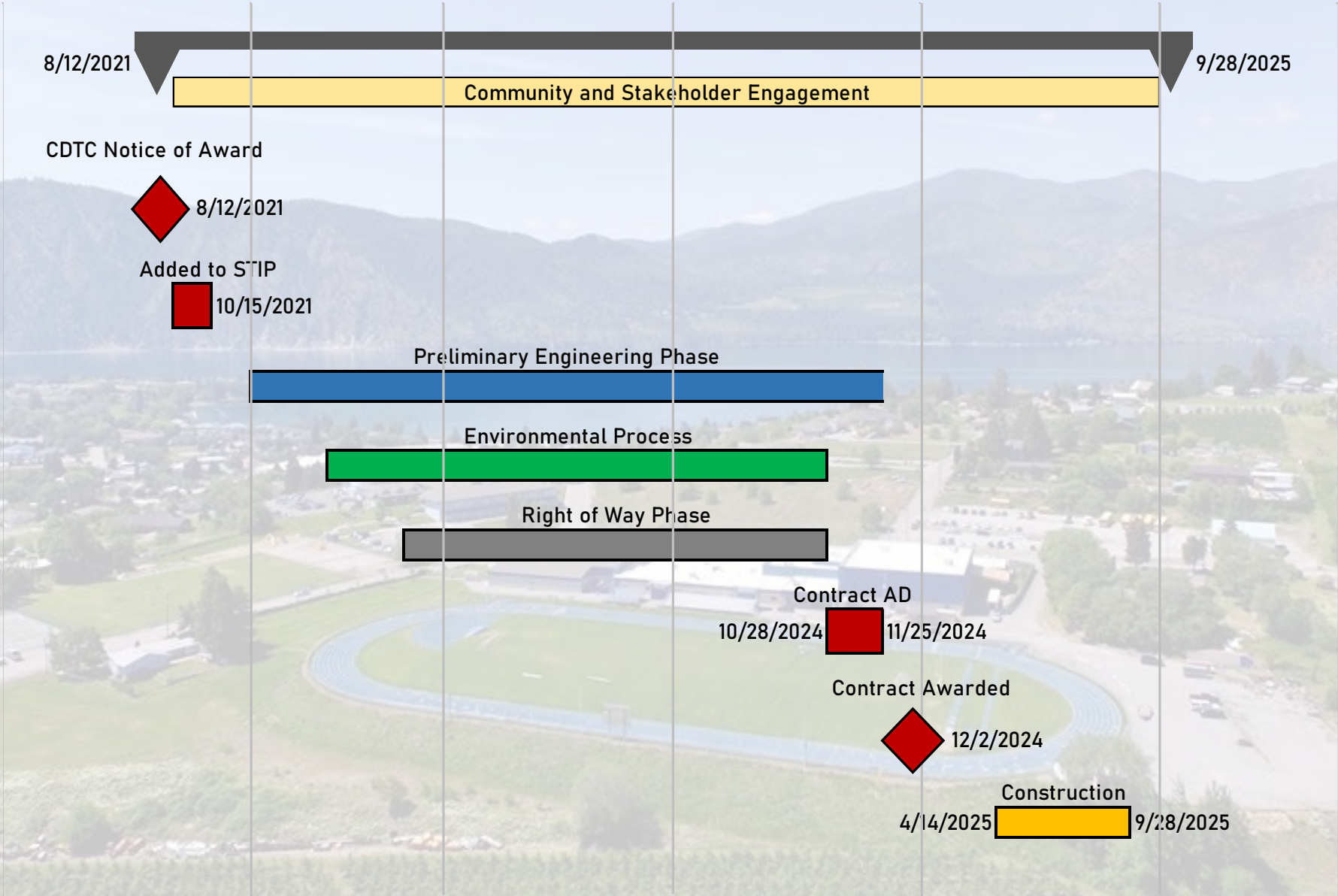


Totem Pole Rd. MP 0.01 to 0.122



Totem Pole Rd. MP 0.122 to 0.704

# Project Schedule





“On two occasions, I have **walked** from my office in downtown **to Manson Elementary** to pick up my kids after school. In those two walks, we’ve experienced several **heart-stopping moments.**”

– Robin Pittman, Manson Park & Recreation

“The number of out-of-town visitors increases every year; they use this road for access to various tourist venues around the Manson area. **Pedestrians and drivers unfamiliar with this road face many obstacles.**”

– Kathy Blum, Mason Community Council

“We as longtime residents know any time there are **weather issues** (snow, freezing rain, flooding) to **avoid Totem Pole Road**. It’s much safer to **take the longer way around**, but not practical as an **emergency responder.**”

– Chief Arnold Baker,  
Manson Fire Department



“Totem Pole Road is steep and narrow with sharp turns and has **no appropriate and safe way for our students** to use it as a means **to get to school.**”

– Superintendent  
Yvonne Walker, Manson  
School District

“Our farming roads are **outdated and insufficient** to **support** the now **decades of growth** in traffic and tourism.”

– Todd Link, Mason Chamber of Commerce