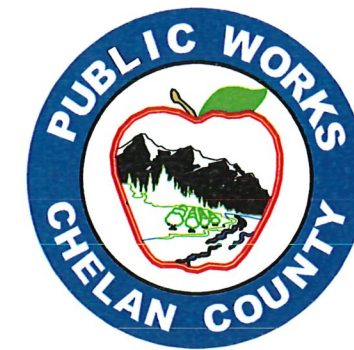


CRP 747

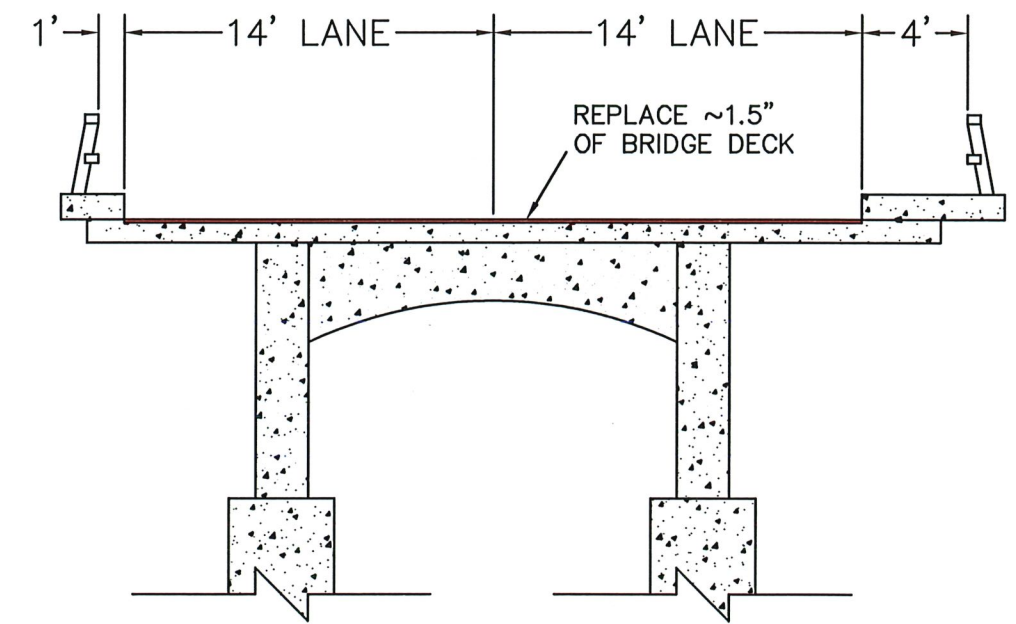
Reparación del tablero y las juntas del puente de Peshastin



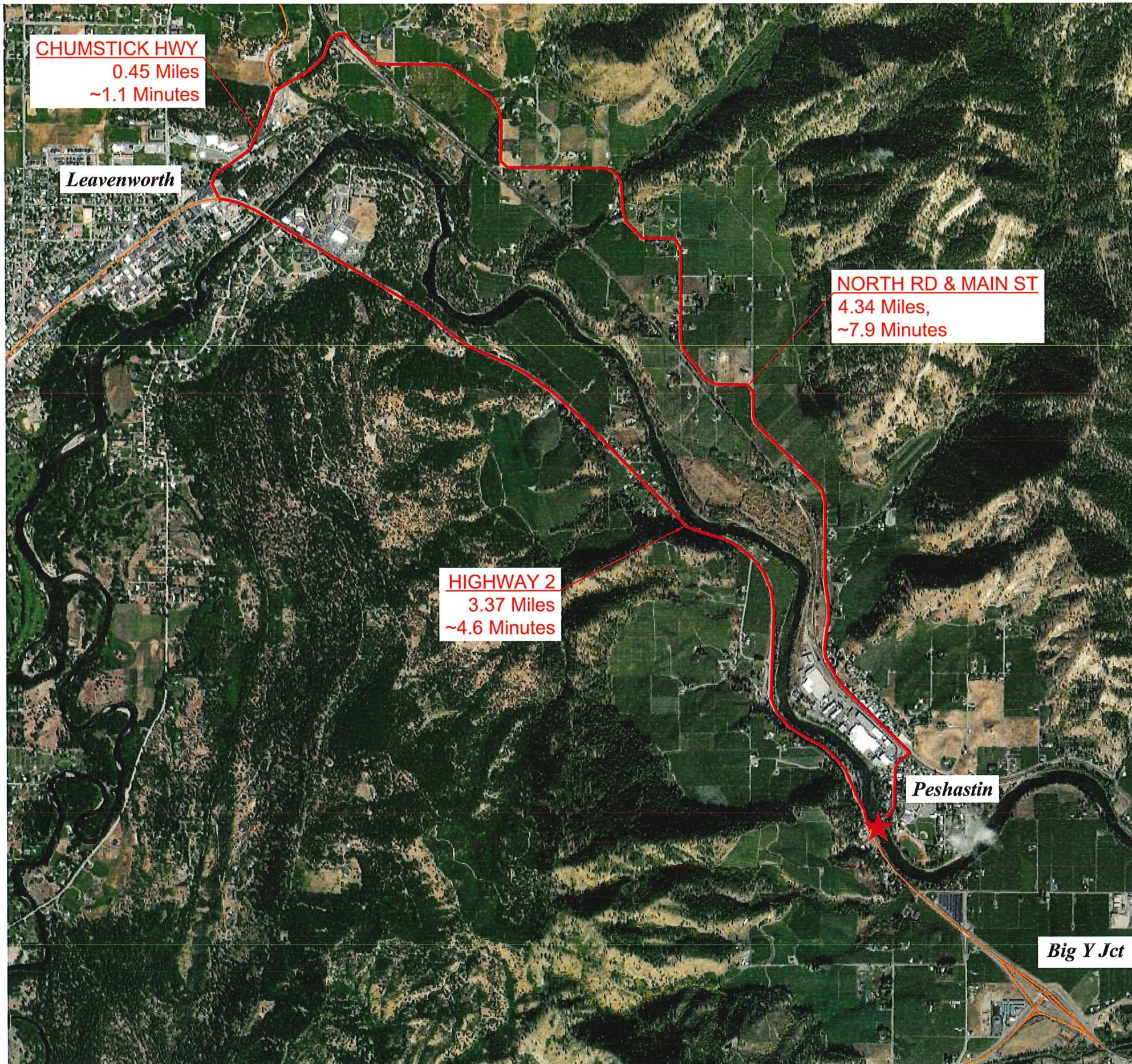
Clave del mapa

Ubicación del Proyecto ★

Ruta de Desvío ———

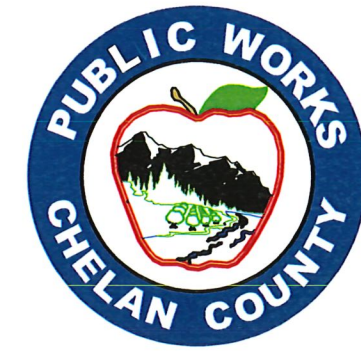


Sección transversal típica de un Puente



CRP 747

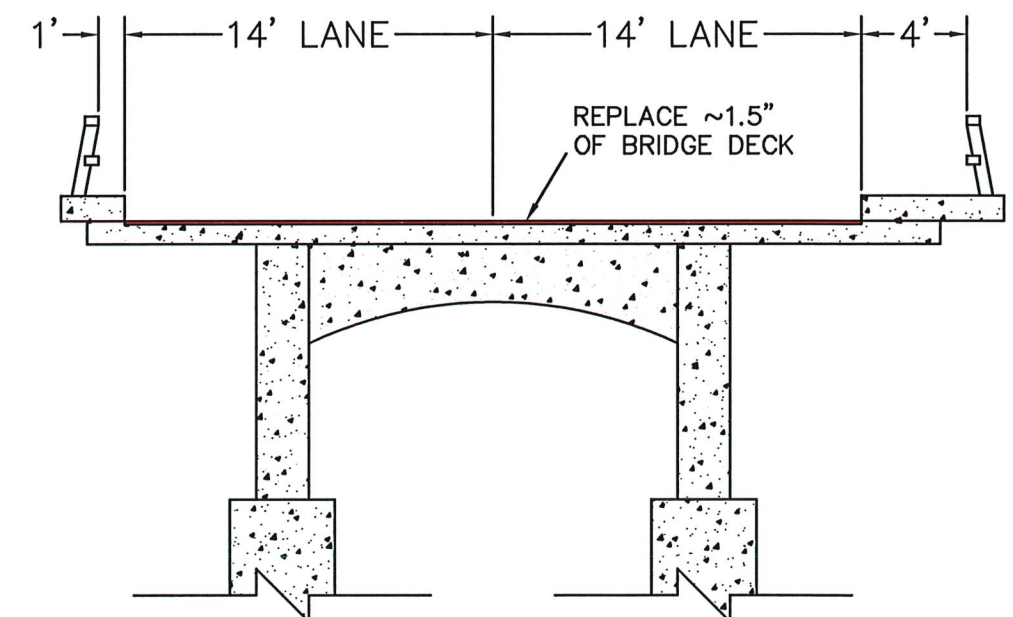
Peshastin Bridge Deck & Joint Repair



LEGEND

PROJECT LOCATION 

DETOUR ROUTE 



TYPICAL
CROSS-SECTION
OF BRIDGE