

PUD work near the West Cashmere (Goodwin) Bridge starting in February

WHAT

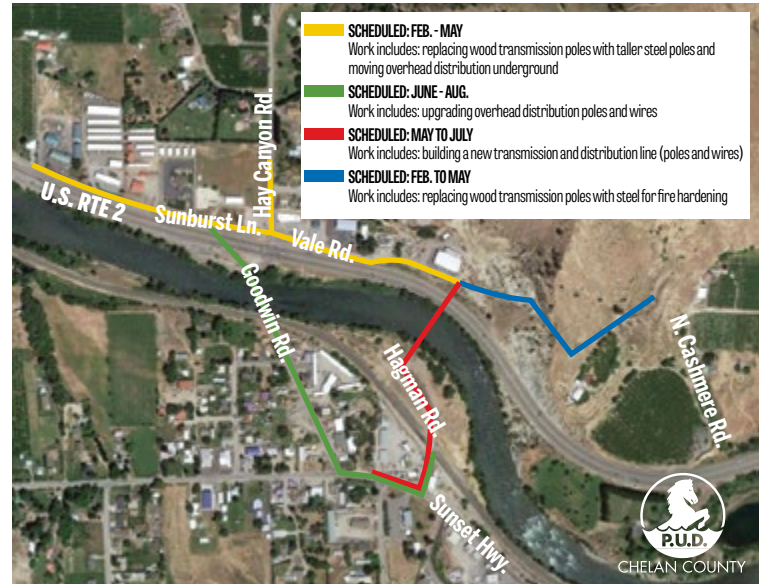
Chelan County Public Works is planning to replace the West Cashmere (Goodwin) Bridge starting in 2020. To accommodate the bridge replacement and related road improvements, Chelan County PUD must upgrade electrical poles and wires. The PUD's contractor, Titan Electric, will soon begin work on the PUD's portion of this project including replacing transmission poles and moving distribution wire underground in some areas. Wood transmission poles will be replaced with steel poles to increase their resiliency against fire.

WHAT TO EXPECT

- Residents will see and hear typical construction impacts during working hours
- One-lane, flagger controlled traffic will be in place at times throughout the project
- Working hours are typically Monday through Friday, 7:30 a.m. – 5 p.m.
- New poles will be placed in close proximity to existing poles
- Power outages may be needed at times throughout the project and affected customers will be notified with details prior to any outage
- **Please make sure we have your correct phone number(s) and email address by entering it at chelanpud.org/UpdateYourInfo or calling us at (509) 661-8002**

For more information on the West Cashmere Bridge Replacement, please visit Chelan County's website:
www.co.chelan.wa.us

For more information and updates on the PUD's portion of the project, please visit our website:
chelanpud.org/InYourNeighborhood



QUESTIONS?

Send questions to
contactus@chelanpud.org or call
Teka Sellers at (509) 661-4294

¿PREGUNTAS?

Si tiene preguntas en español por favor
llame al (509) 661-4081 o mande sus
preguntas a contactus@chelanpud.org