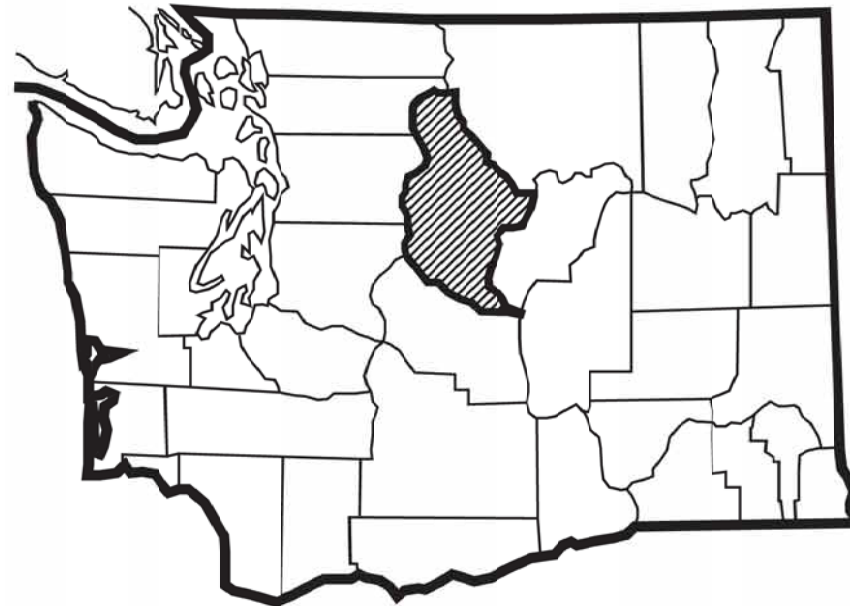


# COUNTYWIDE BARRIER TERMINALS - 2025

## Roadway Safety Improvement Project

**C.R.P. 751**

### CHELAN COUNTY, WASHINGTON



Chelan County  
Public Works Department  
316 Washington Street, Suite 402  
Wenatchee, Washington, 98801

509. 667. 6415  
[www.co.chelan.wa.us](http://www.co.chelan.wa.us)

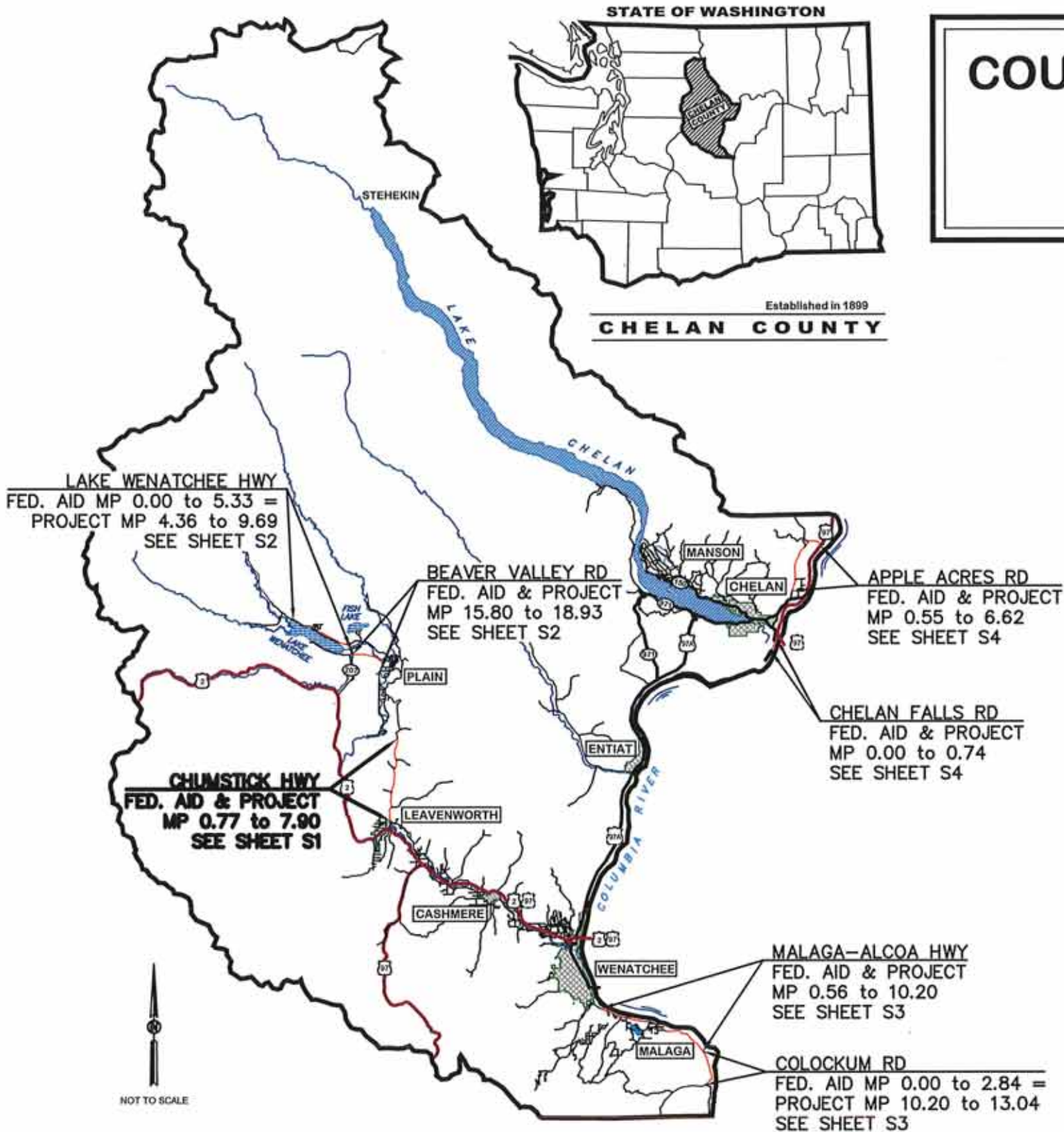
Fed. Aid No. HSIP-000S(692)  
Contract No. TA-7961

# COUNTYWIDE BARRIER TERMINALS - 2025

## Road Safety Improvement Project

C.R.P. 751

Fed. Aid No. HSIP-000S(692)  
Contract No. TA-7961



NOT TO SCALE

### VICINITY MAP

INDEX		
SHEET NO.	DWG NO.	SHEET NAME
1	V1	COVER SHEET, VICINITY MAP & INDEX
2	S1	SUMMARY OF QUANTITIES & SITE MAP
3 - 5	S2 - S4	SITE MAP
6 - 8	QT1 - QT3	QUANTITY TABULATIONS
9 - 13	G1 - G5	GUARDRAIL DETAILS
14	DP1	DRAINAGE AND PAVING DETAILS
15	TC1	TRAFFIC CONTROL PLAN

FILE NAME: N:\Projects\CRP\CRP751\_Countywide Barrier Terminals 2025\Design\Drawings\CRP751 Plan Sheets.dwg

DESIGNED BY: S. Honeycutt, PE

REVIEWED BY: J. Patrick, PE

E. Pierson, PE

DRAWN BY: S. Honeycutt, PE

PLOT DATE: 6/30/2025

REVISIONS

DATE

*Stan Duit*

Approved Board of County Commissioners

7-8-25

Date



Chelan County Public  
Works Department  
316 Washington Street, Suite 402  
Wenatchee, Washington, 98801

509. 667. 6415 www.co.chelan.wa.us



COUNTYWIDE  
BARRIER TERMINALS - 2025  
Roadway Safety Improvement Project

COVER SHEET, VICINITY MAP & INDEX

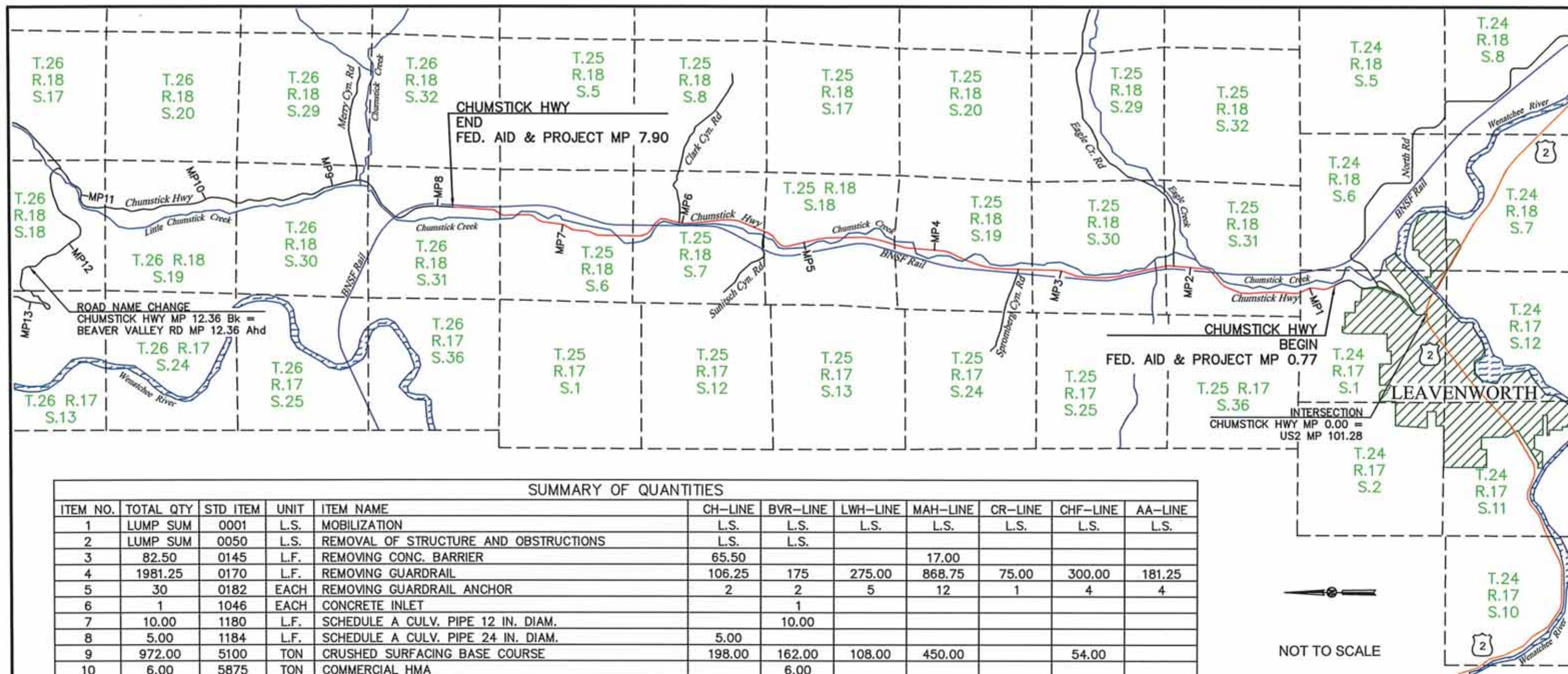
C.R.P. 751

Dwg. No. Sheet No.

V1

1





SUMMARY OF QUANTITIES

ITEM NO.	TOTAL QTY	STD ITEM	UNIT	ITEM NAME	CH-LINE	BVR-LINE	LWH-LINE	MAH-LINE	CR-LINE	CHF-LINE	AA-LINE
1	LUMP SUM	0001	L.S.	MOBILIZATION	L.S.	L.S.	L.S.	L.S.	L.S.	L.S.	L.S.
2	LUMP SUM	0050	L.S.	REMOVAL OF STRUCTURE AND OBSTRUCTIONS	L.S.	L.S.					
3	82.50	0145	L.F.	REMOVING CONC. BARRIER	65.50			17.00			
4	1981.25	0170	L.F.	REMOVING GUARDRAIL	106.25	175	275.00	868.75	75.00	300.00	181.25
5	30	0182	EACH	REMOVING GUARDRAIL ANCHOR	2	2	5	12	1	4	4
6	1	1046	EACH	CONCRETE INLET		1					
7	10.00	1180	L.F.	SCHEDULE A CULV. PIPE 12 IN. DIAM.		10.00					
8	5.00	1184	L.F.	SCHEDULE A CULV. PIPE 24 IN. DIAM.	5.00						
9	972.00	5100	TON	CRUSHED SURFACING BASE COURSE	198.00	162.00	108.00	450.00		54.00	
10	6.00	5875	TON	COMMERCIAL HMA		6.00					
11	5	6403	DAY	ESC LEAD	1	0.5	0.5	1.5	0.5	0.5	0.5
12	500.00	6490	EST.	EROSION/WATER POLLUTION CONTROL	75.00	175.00	50.00	50.00	50.00	50.00	50.00
13	83.00	6727	L.F.	EXTRUDED CURB		83.00					
14	6.25	6751	L.F.	BEAM GUARDRAIL TYPE 1							6.25
15	450.00	6757	L.F.	BEAM GUARDRAIL TYPE 31	37.50		25.00	75.00		62.50	250.00
16	300.00	6711	L.F.	BEAM GUARDRAIL TYPE 31 - 8 FT. LONG POST		75.00	100.00	100.00	25.00		
17	237.50	6712	L.F.	BEAM GUARDRAIL TYPE 31 - 9 FT. LONG POST				137.50		100.00	
18	5	6760	EACH	BEAM GUARDRAIL TRANSITION SECTION TYPE 21	4			1			
19	1	6760	EACH	BEAM GUARDRAIL TRANSITION SECTION TYPE 23	1						
20	31	6719	EACH	BEAM GUARDRAIL TYPE 31 NON-FLARED TERMINAL	6	2	5	13	1	4	
21	100.00	6733	L.F.	BEAM GUARDRAIL TYPE 31 BURIED TERMINAL TYPE 2							100.00
22	300.00	6783	L.F.	RAISING EXISTING BEAM GUARDRAIL	12.5	25.00	62.50	125.00	12.50	12.50	50.00
23	60.00	6784	L.F.	REMOVING AND RESETTING EXISTING PERMANENT BARRIER				60.00			
24	LUMP SUM	6971	L.S.	PROJECT TEMPORARY TRAFFIC CONTROL	L.S.	L.S.	L.S.	L.S.	L.S.	L.S.	L.S.
25	2500.00	7480	EST.	ROADSIDE CLEANUP	600.00	600.00	200.00	600.00	150.00	150.00	200.00
26	LUMP SUM	7736	L.S.	SPCC PLAN	L.S.	L.S.	L.S.	L.S.	L.S.	L.S.	L.S.

GENERAL NOTES

1. UTILITIES ARE NOT SHOWN. THE CONTRACTOR SHALL VERIFY UTILITY LOCATIONS A MINIMUM OF 2 WEEKS PRIOR TO BEGINNING ON-SITE WORK.

FILE NAME: N:\Projects\CRP\CRP751\_Countywide Barrier Terminals 2025\Design\Drawings\CRP751 Plan Sheets.dwg

DESIGNED BY: S. Honeycutt, PE

REVIEWED BY: J. Patrick, PE

DRAWN BY: S. Honeycutt

PLOT DATE: 7/7/2025

REVISIONS

DATE

BY

AS-BUILT



**Chelan County**  
Public Works Department  
316 Washington Street, Suite 402  
Wenatchee, Washington, 98801  
509.667.6415  
www.co.chelan.wa.us

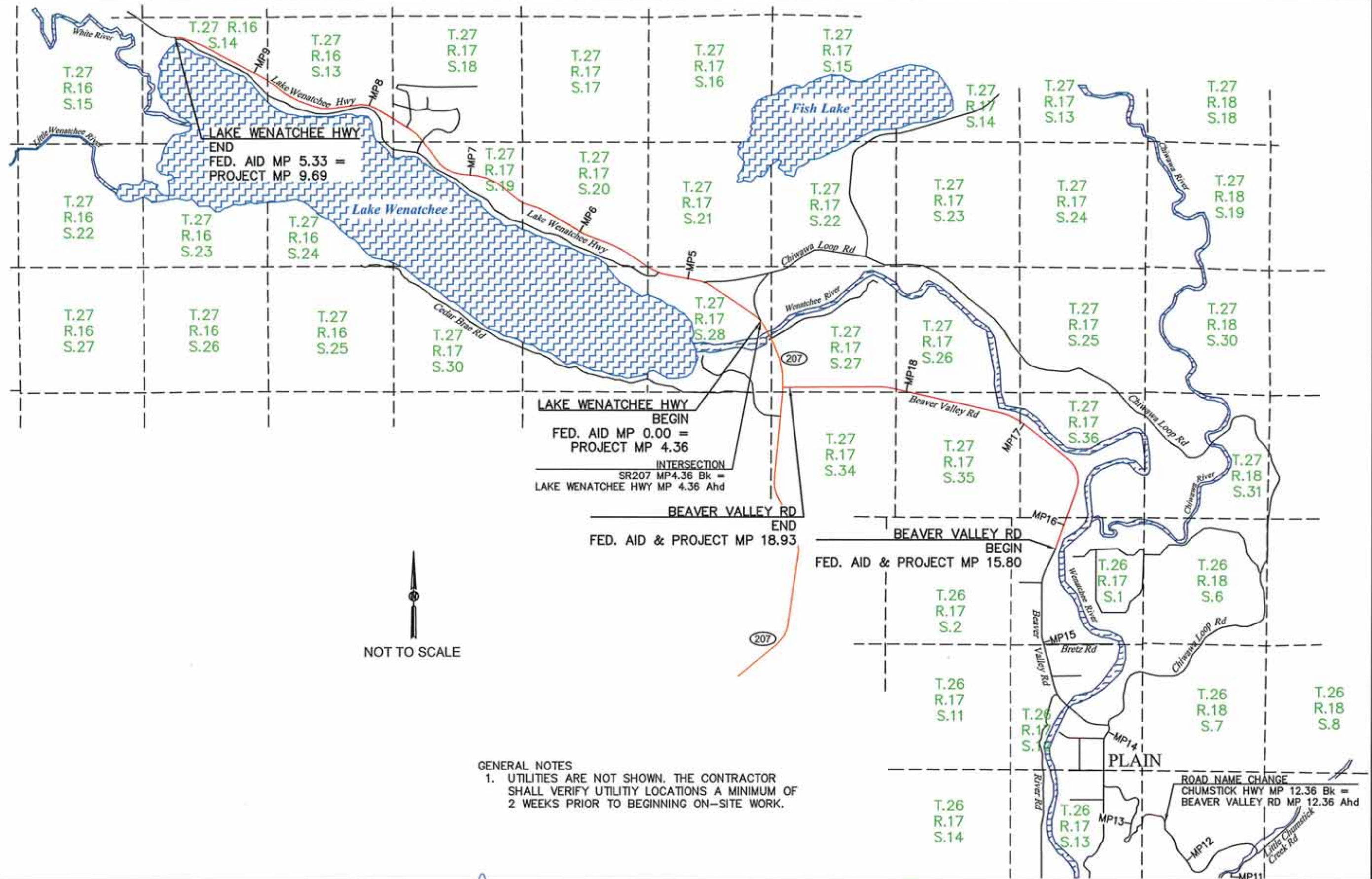


**COUNTYWIDE**  
**BARRIER TERMINALS - 2025**  
*Roadway Safety Improvement Project*  
**SUMMARY OF QUANTITIES & SITE MAP**

C.R.P. 751

Dwg. No. S1  
Sheet No. 2





FILE NAME: N:\Projects\CRP\CRP751\_Countywide Barrier Terminals 2025\Design\Drawings\CRP751 Plan Sheets.dwg

DESIGNED BY: S. Honeycutt, PE	REVISIONS	DATE	BY
REVIEWED BY: J. Pollock, PE			
B. Saxton			
DRAWN BY: S. Honeycutt			
PLOT DATE: 7/17/2025	AS-BUILT		



Chelan County  
Public Works Department  
316 Washington Street, Suite 402  
Wenatchee, Washington, 98801  
509.667.6415  
www.co.chelan.wa.us



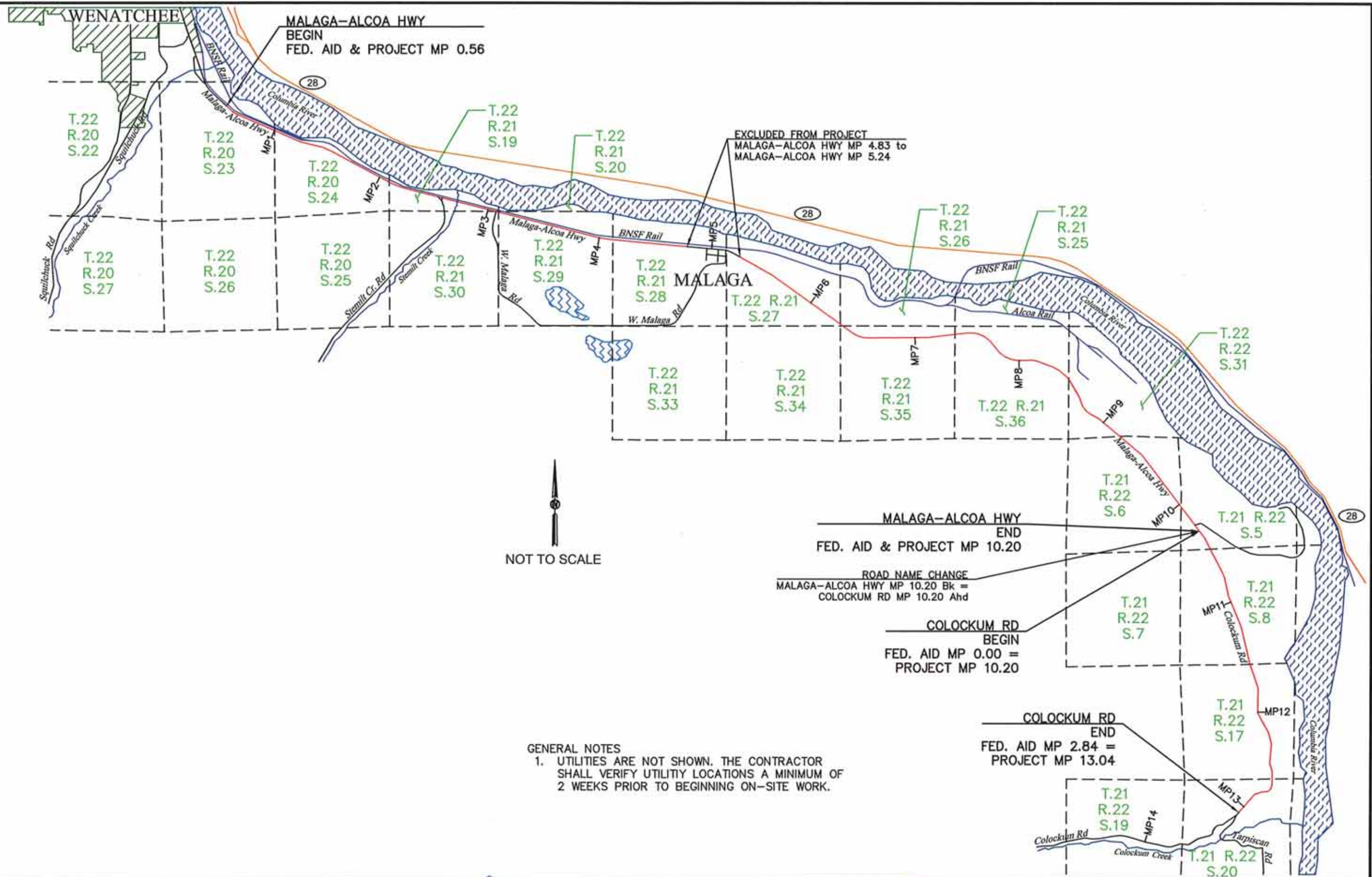
COUNTYWIDE  
BARRIER TERMINALS - 2025  
Roadway Safety Improvement Project

SITE MAP

C.R.P. 751

Dwg. No. S2 Sheet No. 3





FILE NAME: H:\Projects\CRP\CRP751\_Countywide Barrier Terminals 2025\Design\Drawings\CRP751 Plan Sheets.dwg

DESIGNED BY: S. Honeycutt, PE	REVISIONS	DATE	BY
REVIEWED BY: J. Patrick, PE			
B. Saxton			
DRAWN BY: S. Honeycutt			
PLOT DATE: 7/7/2025	AS-BUILT		



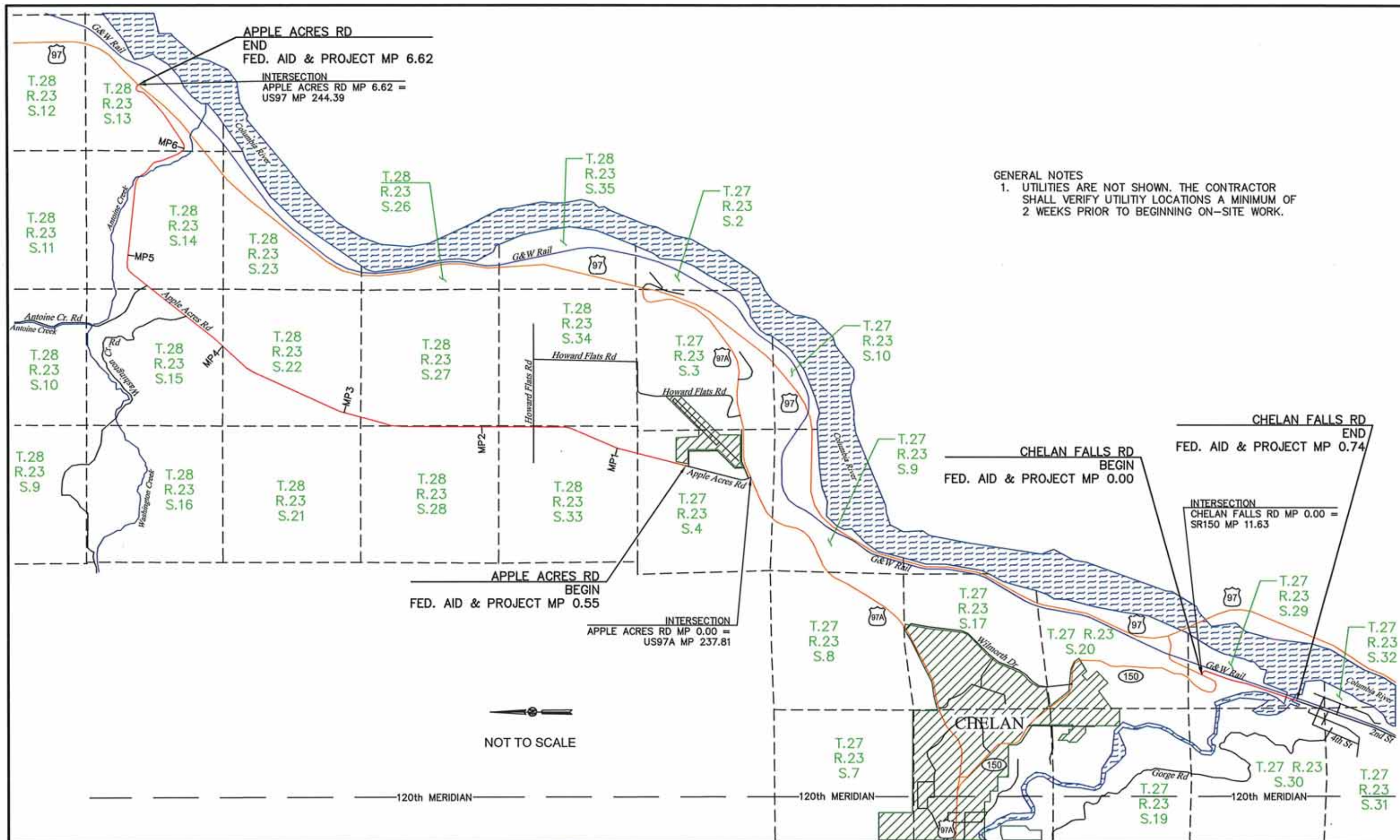
**Chelan County**  
Public Works Department  
316 Washington Street, Suite 402  
Wenatchee, Washington, 98801  
509. 667. 6415  
www.co.chelan.wa.us



**COUNTYWIDE  
BARRIER TERMINALS - 2025**  
Roadway Safety Improvement Project  
**SITE MAP**

C.R.P. 751  
Dwg. No. S3  
Sheet No. 4  
15





FILE NAME: H:\Projects\CRP\CRP751\_Countywide Barrier Terminals 2025\Design\Drawings\CRP751 Plan Sheets.dwg

DESIGNED BY: S. Honeycutt, PE

REVIEWED BY: J. Patrick, PE

DRAWN BY: S. Honeycutt

PLOT DATE: 7/7/2025

AS-BUILT



**Chelan County**  
 Public Works Department  
 316 Washington Street, Suite 402  
 Wenatchee, Washington, 98801  
 509.667.6415  
 www.co.chelan.wa.us



**COUNTYWIDE**  
**BARRIER TERMINALS - 2025**  
 Roadway Safety Improvement Project

**SITE MAP**

C.R.P. 751

Dwg. No. Sheet No.

S4 5

15



# QUANTITY TABULATION - Chumstick Hwy (CH), Beaver Valley Rd (BVR), and Lake Wenatchee Hwy (LWH)

		REMOVING CONC. BARRIER	REMOVING GUARDRAIL	REMOVING GUARDRAIL ANCHOR	CRUSHED SURFACING BASE COURSE	BEAM GUARDRAIL TYPE 1	BEAM GUARDRAIL TYPE 31	BEAM GUARDRAIL TYPE 31 - 8 FT LONG POST	BEAM GUARDRAIL TYPE 31 - 9 FT LONG POST	BEAM GUARDRAIL TRANSITION SECTION TYPE 21	BEAM GUARDRAIL TRANSITION SECTION TYPE 23	BEAM GUARDRAIL TYPE 31 NON-FLARED TERMINAL	BEAM GUARDRAIL TYPE 31 BURIED TERMINAL TYPE 2	RAISING EXISTING BEAM GUARDRAIL	REMOVING AND RESETTING EXISTING PERMANENT BARRIER	TYPE 31 TO 1 ADAPTOR REQUIRED	INF TERMINAL DESIGN	SEE GENERAL NOTES	GENERAL NOTES:
BID ITEM NUMBER ▶		3	4	5	9	14	15	16	17	18	19	20	21	22	23	INFO ONLY	INFO ONLY		
Lead/Trail	LOCATION ▼	L.F.	L.F.	EACH	TON	L.F.	L.F.	L.F.	L.F.	EACH	EACH	EACH	L.F.	L.F.	L.F.				
Lead End	(CH) MP 1.17 Lt	7.00			54.00					1		1					TL-3	5,8,9,12,14	1. Existing Type 1 Anchor (Removal)
Lead End	(CH) MP 1.44 Lt	7.00			36.00					1		1					TL-3	5,8,9,12,14	2. Existing run is Beam Guard. Type 1 w/ wood post and block.
Lead End	(CH) MP 1.80 Rt	44.50								1		1					TL-3	5,8,9,12,14	3. Existing run includes a thrie beam reducer section type B and bridge thrie beam retrofit.
Lead End	(CH) MP 1.85 Lt	7.00			54.00		12.50			1		1					TL-3	5,8,9,12,14	4. Existing run is Precast Conc. Barrier Type 2 in 10' lengths w/ 7' precast barrier terminals.
Lead End	(CH) MP 7.20 Rt		62.50	1	36.00		25.00					1		12.50		X	TL-3	1,2,6,8,11	5. Existing run is Precast Conc. Barrier Type 2 in 12.5' lengths w/ 7' precast barrier terminals.
Lead End	(CH) MP 7.35 Lt		43.75	1	18.00						1	1					TL-3	1,2,3,8,10,13	6. Beam guardrail shall match existing post and block materials. Terminal and Transition materials shall be as allowed by the Std. Plans.
Lead End	(BVR) MP 15.92 Rt		62.50	1	18.00			25.00				1		12.50		X	TL-3	1,2,6,8,11	7. Beam Guardrail Type 31 - Buried Terminal Type 2. See Std. Plan C-22.16.
Lead End	(BVR) MP 16.10 Lt		112.50	1	144.00			50.00				1		12.50		X	TL-3	1,2,6,8,11,14	8. TL-3 Terminal. See Std. Plan C-22.40. Install 2-ft offset if feasible.
Lead End	(LWH) MP 5.92 Lt		50.00	1	90.00			25.00				1		12.50		X	TL-3	1,2,6,8,11	9. Type 21 Transition. See Std. Plan C-25.20.
Lead End	(LWH) MP 8.23 Lt		62.50	1			25.00					1		12.50		X	TL-3	1,2,6,8,11	10. Type 23 Transition. See Std. Plan C-25.26.
Lead End	(LWH) MP 8.40 Lt		62.50	1				25.00				1		12.50		X	TL-3	1,2,6,8,11	11. Beam Guardrail Type 31 to 1 Adaptor. See Std. Plan C-25.80.
Lead End	(LWH) MP 9.46 Lt		50.00	1	18.00			25.00				1		12.50		X	TL-3	1,2,6,8,11	12. Connect Type 21 Transition to existing precast type 2 conc. Barrier using Type A Connection. See Std. Plan C-24.10
Lead End	(LWH) MP 9.68 Lt		50.00	1				25.00				1		12.50		X	TL-3	1,2,6,8,11	13. Connect Type 23 Transition to existing thrie-beam.
SHEET TOTAL		65.50	556.25	9	468.00	0.00	62.50	175.00	0.00	4	1	13	0.00	100.00	0.00				14. Refer to Guardrail Detail Sheets for additional information.
PROJECT TOTAL																			15. Existing W-Beam sections are 25' in length.

FILE NAME: H:\Projects\CRP\CRP751\_Countywide Barrier Terminals 2025\Design\Drawings\CRP751 QTA8.dwg

DESIGNED BY:	REVISIONS	DATE	BY
J. Honeycutt, PE			
REVIEWED BY: J. Patrick, PE			
B. Saxton			
DRAWN BY: J. Honeycutt, PE			
PLOT DATE: 7/7/2025	AS-BUILT		



**Chelan County**  
Public Works Department  
316 Washington Street, Suite 402  
Wenatchee, Washington, 98801  
509. 667. 6415  
www.co.chelan.wa.us

**COUNTYWIDE**  
**BARRIER TERMINALS - 2025**  
*Roadway Safety Improvement Project*  
**QUANTITY TABULATIONS**

C.R.P. 751

Dwg. No. Sheet No.

QT1 6



QUANTITY TABULATION - Malaga Alcoa Hwy (MAH) and Colockum Rd (CR)

		REMOVING CONC. BARRIER	REMOVING GUARDRAIL	REMOVING GUARDRAIL ANCHOR		CRUSHED SURFACING BASE COURSE	BEAM GUARDRAIL TYPE 1	BEAM GUARDRAIL TYPE 31	BEAM GUARDRAIL TYPE 31 - 8 FT LONG POST	BEAM GUARDRAIL TYPE 31 - 9 FT LONG POST		BEAM GUARDRAIL TRANSITION SECTION TYPE 21	BEAM GUARDRAIL TRANSITION SECTION TYPE 23	BEAM GUARDRAIL TYPE 31 NON-FLARED TERMINAL	BEAM GUARDRAIL TYPE 31 BURIED TERMINAL TYPE 2		RAISING EXISTING BEAM GUARDRAIL	REMOVING AND RESETTING EXISTING PERMANENT BARRIER	TYPE 31 TO 1 ADAPTOR REQUIRED	INF TERMINAL DESIGN	SEE GENERAL NOTES	GENERAL NOTES:
BID ITEM NUMBER ►		3	4	5		9	14	15	16	17		18	19	20	21		22	23	INFO ONLY	INFO ONLY		1. Existing Type 1 Anchor (Removal)  2. Existing run is Beam Guard. Type 1 w/ wood post and block.  3. Existing run includes a thrie beam reducer section type B and bridge thrie beam retrofit.  4. Existing run is Precast Conc. Barrier Type 2 in 10' lengths w/ 7' precast barrier terminals.  5. Existing run is Precast Conc. Barrier Type 2 in 12.5' lengths w/ 7' precast barrier terminals.  6. Beam guardrail shall match existing post and block materials. Terminal and Transition materials shall be as allowed by the Std. Plans.  7. Beam Guardrail Type 31 - Buried Terminal Type 2. See Std. Plan C-22.16.  8. TL-3 Terminal. See Std. Plan C-22.40. Install 2-ft offset if feasible.  9. Type 21 Transition. See Std. Plan C-25.20.  10. Type 23 Transition. See Std. Plan C-25.26.  11. Beam Guardrail Type 31 to 1 Adaptor. See Std. Plan C-25.80.  12. Connect Type 21 Transition to existing precast type 2 conc. Barrier using Type A Connection. See Std. Plan C-24.10  13. Connect Type 23 Transition to existing thrie-beam. 14. Refer to Guardrail Detail Sheets for additional information. 15. Existing W-Beam sections are 25' in length. 16. Hand digging for the terminal anchor post 1 and 2 is required to avoid buried gas line.
Lead/Trail	LOCATION ▼	L.F.	L.F.	EACH		TON	L.F.	L.F.	L.F.	L.F.		EACH	EACH	EACH	L.F.		L.F.	L.F.				
Lead End	(MAH) MP 0.82 Rt	17.00				54.00						1		1				60.00		TL-3	4,8,9,12,14	
Lead End	(MAH) MP 2.69 Rt		75.00	1				25.00						1					X	TL-3	1,2,8,11,16	
Lead End	(MAH) MP 2.72 Lt		75.00	1				25.00						1					X	TL-3	1,2,8,11	
Lead End	(MAH) MP 3.04 Rt		87.50	1		36.00				37.50				1			12.50		X	TL-3	1,2,6,8,11,14	
Lead End	(MAH) MP 5.46 Lt		75.00	1		90.00				25.00				1			12.50		X	TL-3	1,2,6,8,11	
Lead End	(MAH) MP 5.90 Lt		75.00	1		18.00			25.00					1			12.50		X	TL-3	1,2,6,8,11	
Lead End	(MAH) MP 6.12 Rt		81.25	1		36.00			25.00					1			12.50		X	TL-3	1,2,6,8,11	
Lead End	(MAH) MP 6.30 Lt		75.00	1		36.00				25.00				1			12.50		X	TL-3	1,2,6,8,11	
Lead End	(MAH) MP 6.77 Rt		75.00	1		54.00				25.00				1			12.50		X	TL-3	1,2,6,8,11	
Lead End	(MAH) MP 7.33 Rt		75.00	1		36.00			25.00					1			12.50		X	TL-3	1,2,6,8,11	
Lead End	(MAH) MP 7.63 Lt		75.00	1		18.00			25.00					1			12.50		X	TL-3	1,2,6,8,11	
Lead End	(MAH) MP 8.12 Lt		75.00	1		36.00				25.00				1			12.50		X	TL-3	1,2,6,8,11	
Lead End	(MAH) MP 8.79 Lt		25.00	1		36.00		25.00						1			12.50		X	TL-3	1,2,6,8,11	
Lead End	(CR) MP 11.98 Rt		75.00	1					25.00					1			12.50		X	TL-3	1,2,6,8,11	
SHEET TOTAL		17.00	943.75	13		450.00	0.00	75.00	125.00	137.50		1	0	14	0.00		137.50	60.00				
PROJECT TOTAL																						

FILE NAME: H:\Projects\CRP\CRP751_Countywide Barrier Terminals\2025\Design\Drawings\CRP751 QTA85.dwg			
DESIGNED BY: S. Honeycutt, PE	REVISIONS	DATE	BY
REVIEWED BY: J. Patrick, PE			
B. Saxton			
DRAWN BY: S. Honeycutt, PE			
PLOT DATE: 7/7/2025	AS-BUILT		



Chelan County  
Public Works Department  
316 Washington Street, Suite 402  
Wenatchee, Washington, 98801  
509. 667. 6415  
www.co.chelan.wa.us

COUNTYWIDE  
BARRIER TERMINALS - 2025  
Roadway Safety Improvement Project  
QUANTITY TABULATIONS

C.R.P. 751

Dwg. No. Sheet No.

QT2 7



## QUANTITY TABULATION - Chelan Falls Rd (CHF) and Apple Acres Rd (AA)

		REMOVING CONC. BARRIER	REMOVING GUARDRAIL	REMOVING GUARDRAIL ANCHOR		CRUSHED SURFACING BASE COURSE	BEAM GUARDRAIL TYPE 1	BEAM GUARDRAIL TYPE 31	BEAM GUARDRAIL TYPE 31 - 8 FT LONG POST	BEAM GUARDRAIL TYPE 31 - 9 FT LONG POST		BEAM GUARDRAIL TRANSITION SECTION TYPE 21	BEAM GUARDRAIL TRANSITION SECTION TYPE 23	BEAM GUARDRAIL TYPE 31 NON-FLARED TERMINAL	BEAM GUARDRAIL TYPE 31 BURIED TERMINAL TYPE 2		RAISING EXISTING BEAM GUARDRAIL	REMOVING AND RESETTNG EXISTING PERMANENT BARRIER	TYPE 31 TO 1 ADAPTOR REQUIRED	INF TERMINAL DESIGN	SEE GENERAL NOTES	GENERAL NOTES:
BID ITEM NUMBER ▶		3	4	5		9	14	15	16	17		18	19	20	21		22	23	INFO ONLY	INFO ONLY		
Lead/Trail	LOCATION ▼	L.F.	L.F.	EACH		TON	L.F.	L.F.	L.F.	L.F.		EACH	EACH	EACH	L.F.		L.F.	L.F.				
Trail End	(CHF) MP 0.03 Lt		93.75	1						50.00				1						TL-3	1,2,8,14	1. Existing Type 1 Anchor (Removal)
Lead End	(CHF) MP 0.06 Lt		93.75	1		36				50.00				1						TL-3	1,2,8,14	2. Existing run is Beam Guard. Type 1 w/ wood post and block.
Lead End	(CHF) MP 0.43 Rt		75.00	1				25.00						1		12.50			X	TL-3	1,2,6,8,11	3. Existing run includes a thrie beam reducer section type B and bridge thrie beam retrofit.
Lead End	(CHF) MP 0.74 Lt		37.50	1		18		37.50						1					X	TL-3	1,2,8,11	4. Existing run is Precast Conc. Barrier Type 2 in 10' lengths w/ 7' precast barrier terminals.
Lead End	(AA) MP 4.57 Rt		50.00	1				37.50							50.00	25.00			X	TL-3	1,2,6,7,11,15	5. Existing run is Precast Conc. Barrier Type 2 in 12.5' lengths w/ 7' precast barrier terminals.
Lead End	(AA) MP 4.87 Rt		50.00	1				37.50							50.00	25.00			X	TL-3	1,2,6,7,11,15	6. Beam guardrail shall match existing post and block materials. Terminal and Transition materials shall be as allowed by the Std. Plans.
Trail End	(AA) MP 5.92 Rt		31.25	1			6.25	87.50											X		1,2,6,11,14,15	7. Beam Guardrail Type 31 - Buried Terminal Type 2. See Std. Plan C-22.16.
Lead End	(AA) MP 5.93 Rt		50.00	1				87.50											X		1,2,6,11,14,15	8. TL-3 Terminal. See Std. Plan C-22.40. Install 2-ft offset if feasible.
																						9. Type 21 Transition. See Std. Plan C-25.20.
																						10. Type 23 Transition. See Std. Plan C-25.26.
																						11. Beam Guardrail Type 31 to 1 Adaptor. See Std. Plan C-25.80.
																						12. Connect Type 21 Transition to existing precast type 2 conc. Barrier using Type A Connection. See Std. Plan C-24.10
																						13. Connect Type 23 Transition to existing thrie-beam.
																						14. Refer to Guardrail Detail Sheets for additional information.
																						15. Existing W-Beam sections are 25' in length.
	SHEET TOTAL	0.00	481.25	8		54.00	6.25	312.50	0.00	100.00		0	0	4	100.00		62.50	0.00				
	PROJECT TOTAL	82.50	1,981.25	30		972.00	6.25	450.00	300.00	237.50		5	1	31	100.00		300.00	60.00				

FILE NAME: H:\Projects\CRP\CRP751\_Countywide Barrier Terminals 2025\Design\Drawings\CRP751 QTABS.dwg

DESIGNED BY:	REVISIONS	DATE	BY
S. Honeycutt, PE			
REVIEWED BY: J. Patrick, PE			
B. Saxton			
DRAWN BY: S. Honeycutt, PE			
PLOT DATE: 7/7/2025	AS-BUILT		



Know what's below.  
Call before you dig.



**Chelan County**  
Public Works Department  
316 Washington Street, Suite 402  
Wenatchee, Washington, 98801  
509.667.6415  
www.co.chelan.wa.us

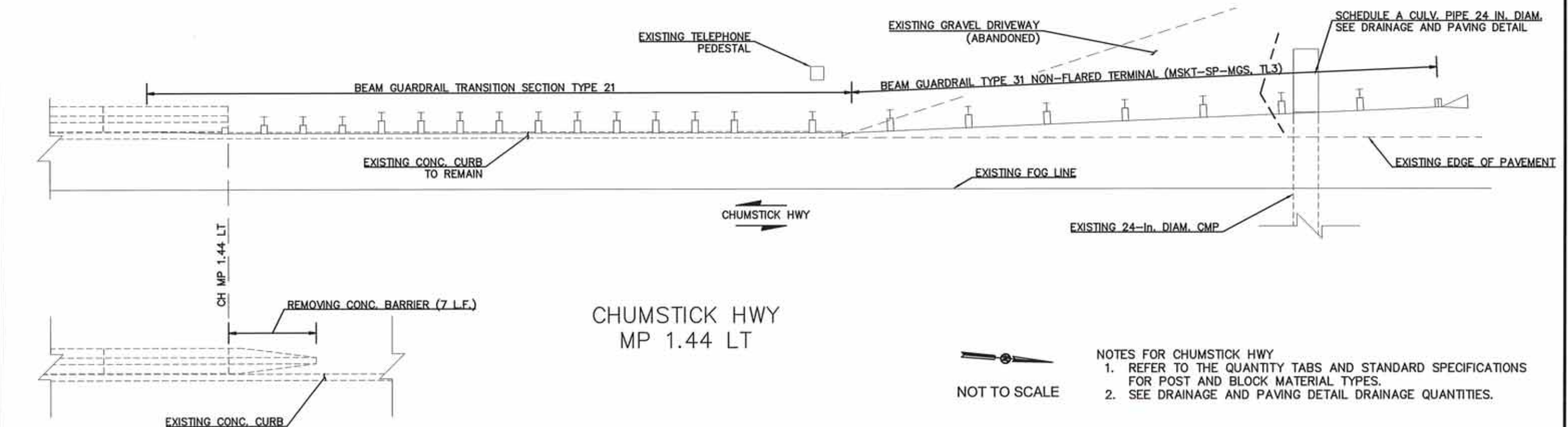
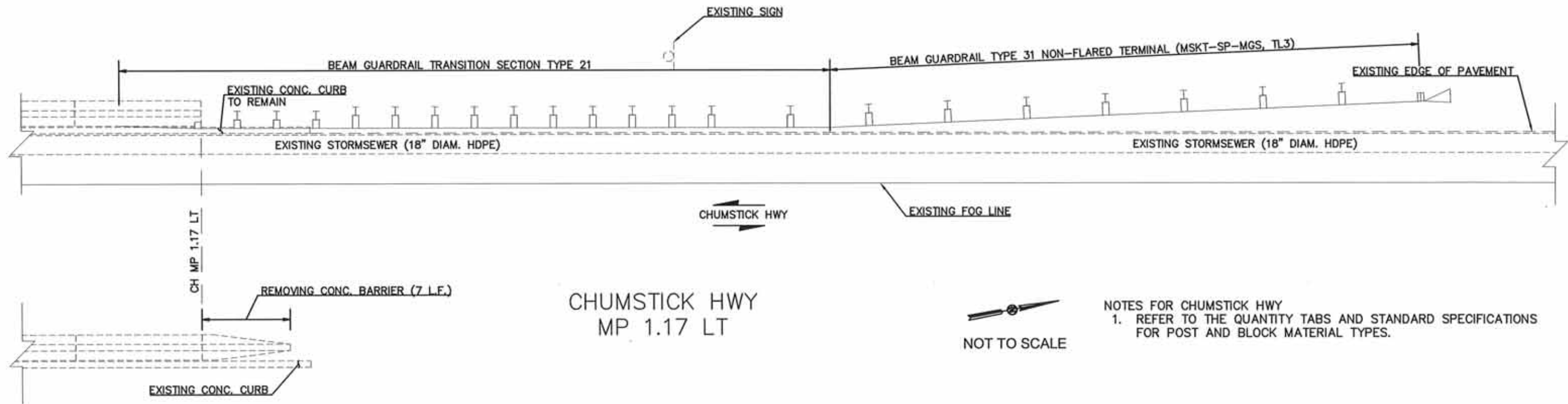
**COUNTYWIDE**  
**BARRIER TERMINALS - 2025**  
*Roadway Safety Improvement Project*

QUANTITY TABULATIONS

C.R.P. 751

Dwg. No. QT3  
Sheet No. 8





FILE NAME: H:\Projects\CRP\CRP751_Countywide Barrier Terminals 2025\Design\Drawings\CRP751 Plan Sheets.dwg	DESIGNED BY: S. Honeycutt, PE	REVISIONS	DATE	BY
REVIEWED BY: J. Patrick, PE				
DRAWN BY: S. Honeycutt				
PLOT DATE: 7/7/2025	AS-BUILT			



Chelan County  
Public Works Department  
316 Washington Street, Suite 402  
Wenatchee, Washington, 98801  
509.667.6415  
www.co.chelan.wa.us



COUNTYWIDE  
BARRIER TERMINALS - 2025  
Roadway Safety Improvement Project

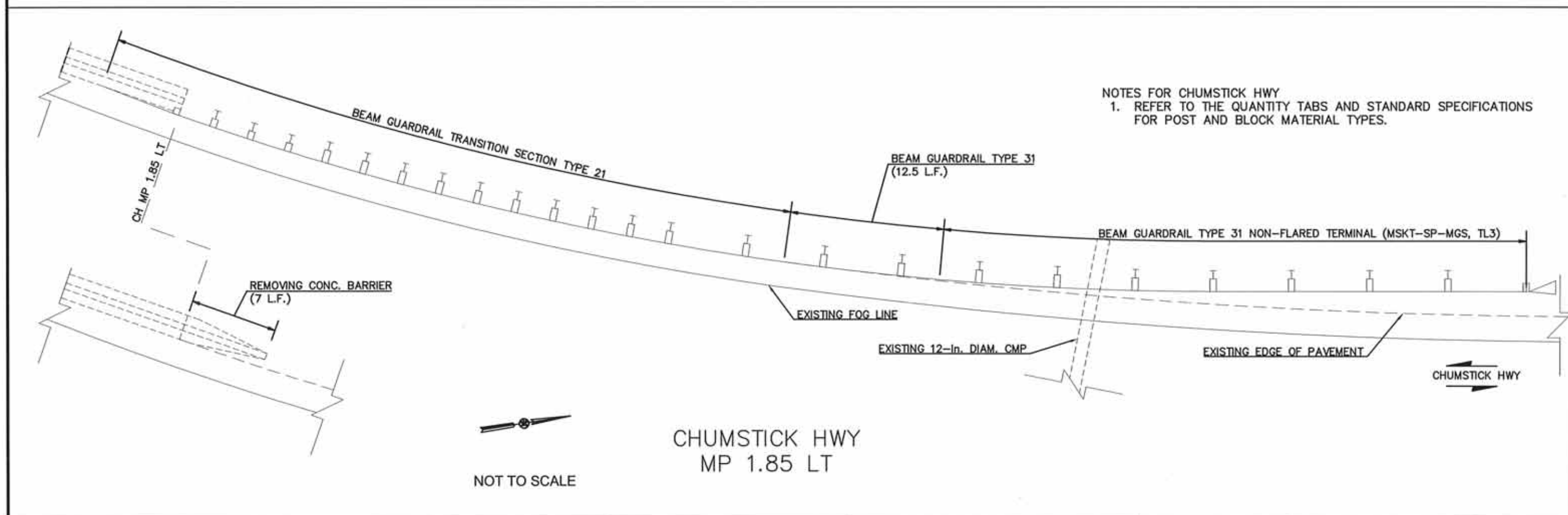
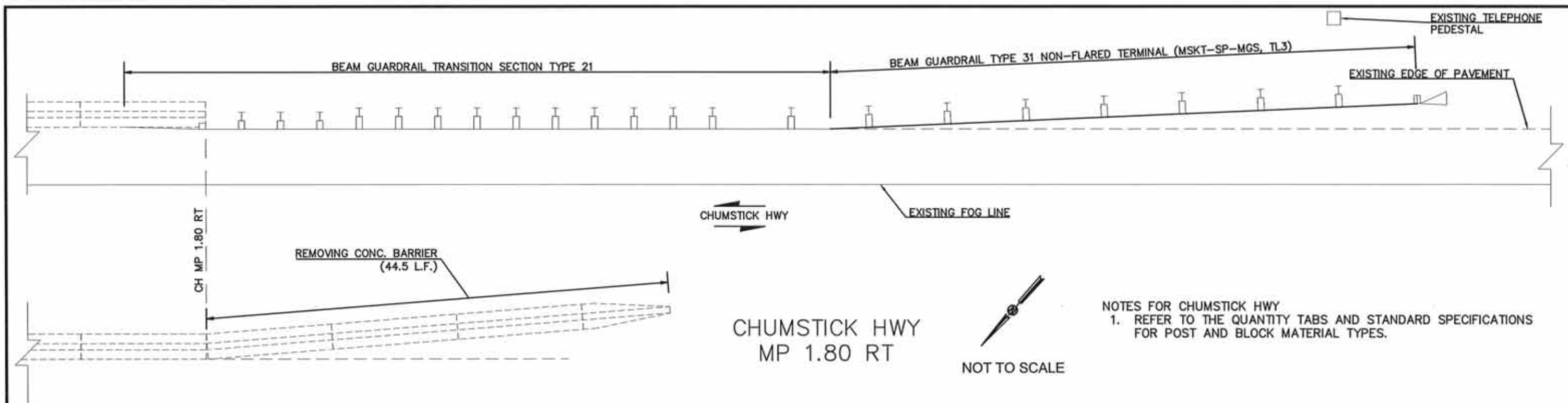
GUARDRAIL DETAILS

C.R.P. 751

Dwg. No. Sheet No.

G1 9





FILE NAME: N:\Projects\CRP\CRP751_Countywide Barrier Terminals 2025\Design\Drawings\CRP751 Plan Sheets.dwg			
DESIGNED BY: S. Honeycutt, PE	REVISIONS	DATE	BY
REVIEWED BY: J. Patrick, PE			
B. Saxton			
DRAWN BY: S. Honeycutt			
PLOT DATE: 7/7/2025	AS-BUILT		



Chelan County  
Public Works Department  
316 Washington Street, Suite 402  
Wenatchee, Washington, 98801  
509. 667. 6415  
www.co.chelan.wa.us

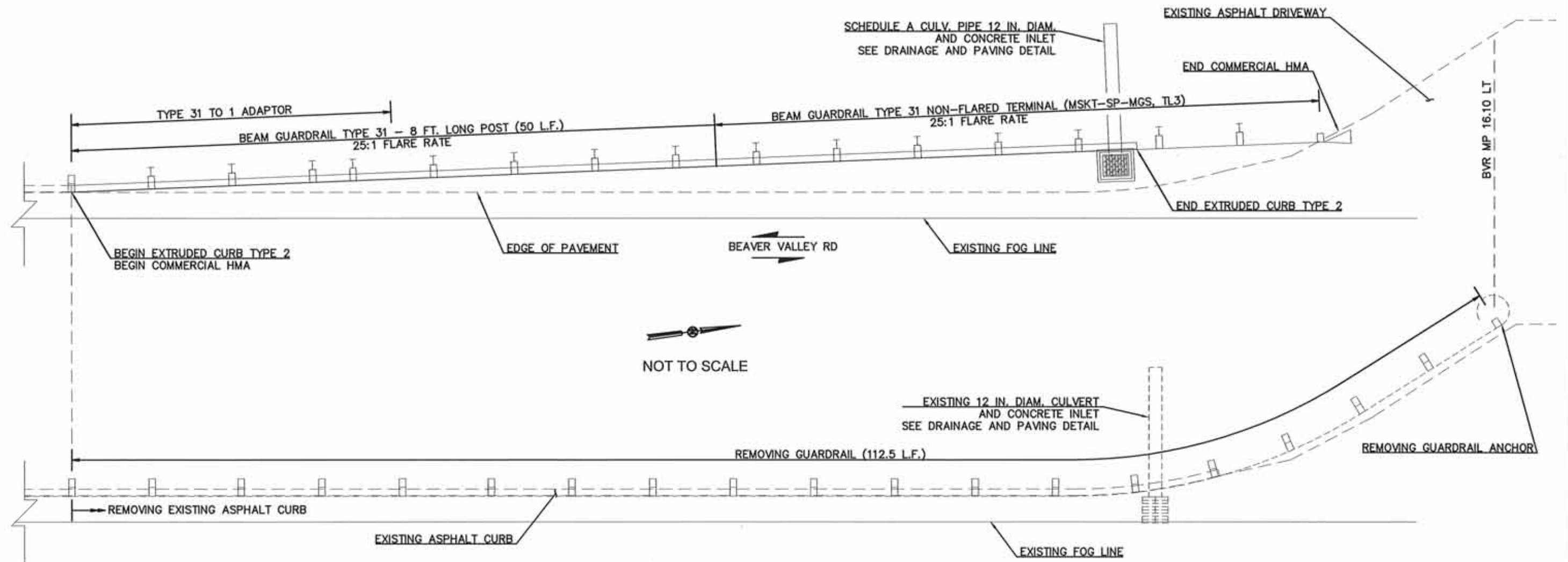


**COUNTYWIDE  
BARRIER TERMINALS - 2025**  
*Roadway Safety Improvement Project*

**GUARDRAIL DETAILS**

C.R.P. 751	
Dwg. No.	Sheet No.
G2	10





# BEAVER VALLEY RD MP 16.10 LT

- NOTES FOR BEAVER VALLEY RD
1. REFER TO THE QUANTITY TABS AND STANDARD SPECIFICATIONS FOR POST AND BLOCK MATERIAL TYPES.
  2. SEE DRAINAGE AND PAVING DETAIL FOR CURB, HMA, AND DRAINAGE QUANTITIES.

FILE NAME: H:\Projects\CRP\CRP751_Countywide Barrier Terminals 2025\Design\Drawings\CRP751 Plan Sheets.dwg				
DESIGNED BY: S. Honeycutt, PE	REVISIONS	DATE	BY	
REVIEWED BY: J. Patrick, PE				
B. Saxton				
DRAWN BY: S. Honeycutt				
PLOT DATE: 7/7/2025	AS-BUILT			



Chelan County  
Public Works Department  
316 Washington Street, Suite 402  
Wenatchee, Washington, 98801  
509. 667. 6415  
www.co.chelan.wa.us



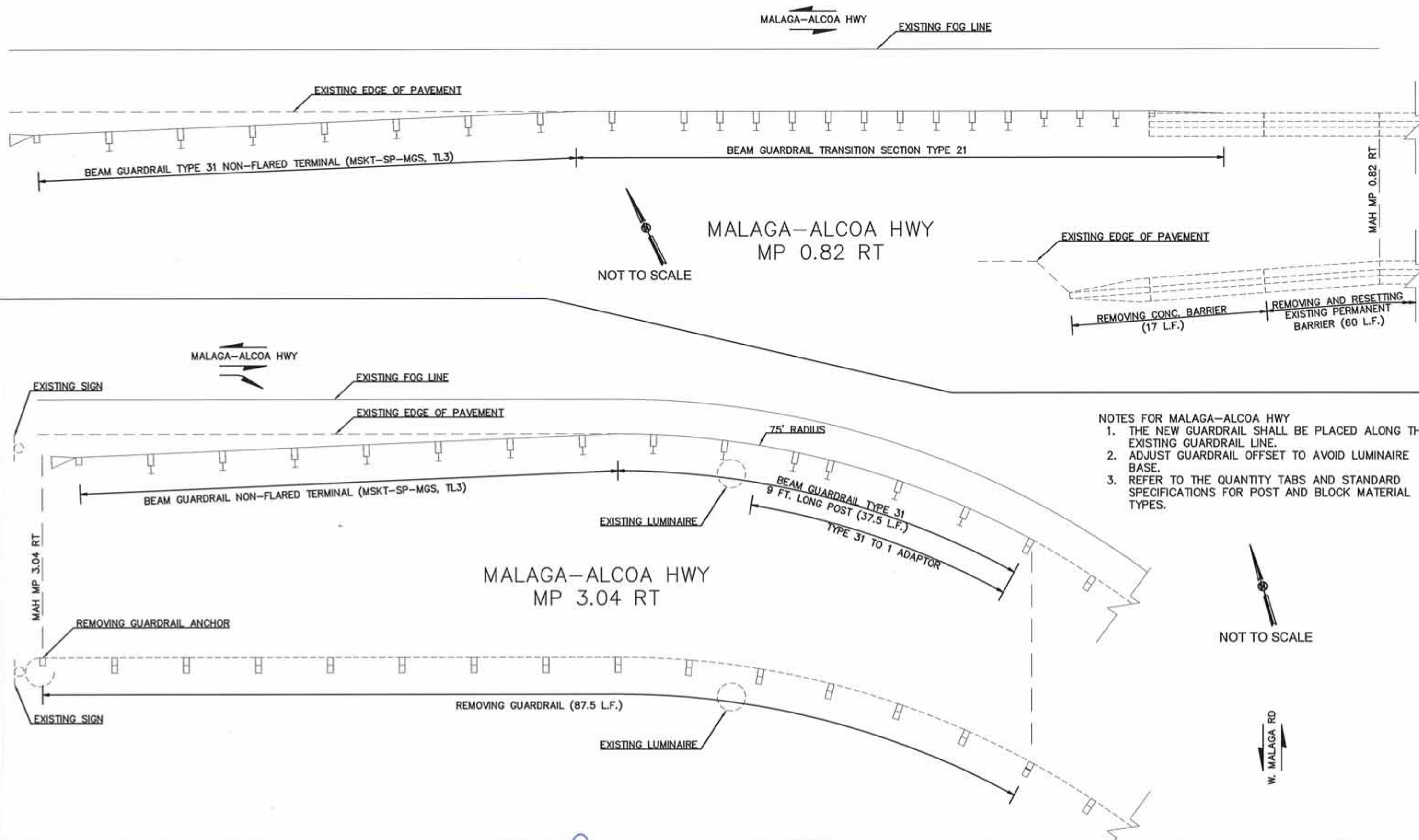
**COUNTYWIDE  
BARRIER TERMINALS - 2025  
Roadway Safety Improvement Project**

GUARDRAIL DETAILS

C.R.P. 751

Dwg. No. G3 Sheet No. 11





FILE NAME: N:\Projects\CRP\CRP751_Countywide Barrier Terminals 2025\Design\Drawings\CRP751 Plan Sheets.dwg	DESIGNED BY: S. Honeycutt, PE	REVISIONS	DATE	BY
REVIEWED BY: J. Patrick, PE				
8. Saxton				
DRAWN BY: S. Honeycutt				
PLOT DATE: 7/7/2025	AS-BUILT			



Chelan County  
Public Works Department  
316 Washington Street, Suite 402  
Wenatchee, Washington, 98801  
509.667.6415  
www.co.chelan.wa.us



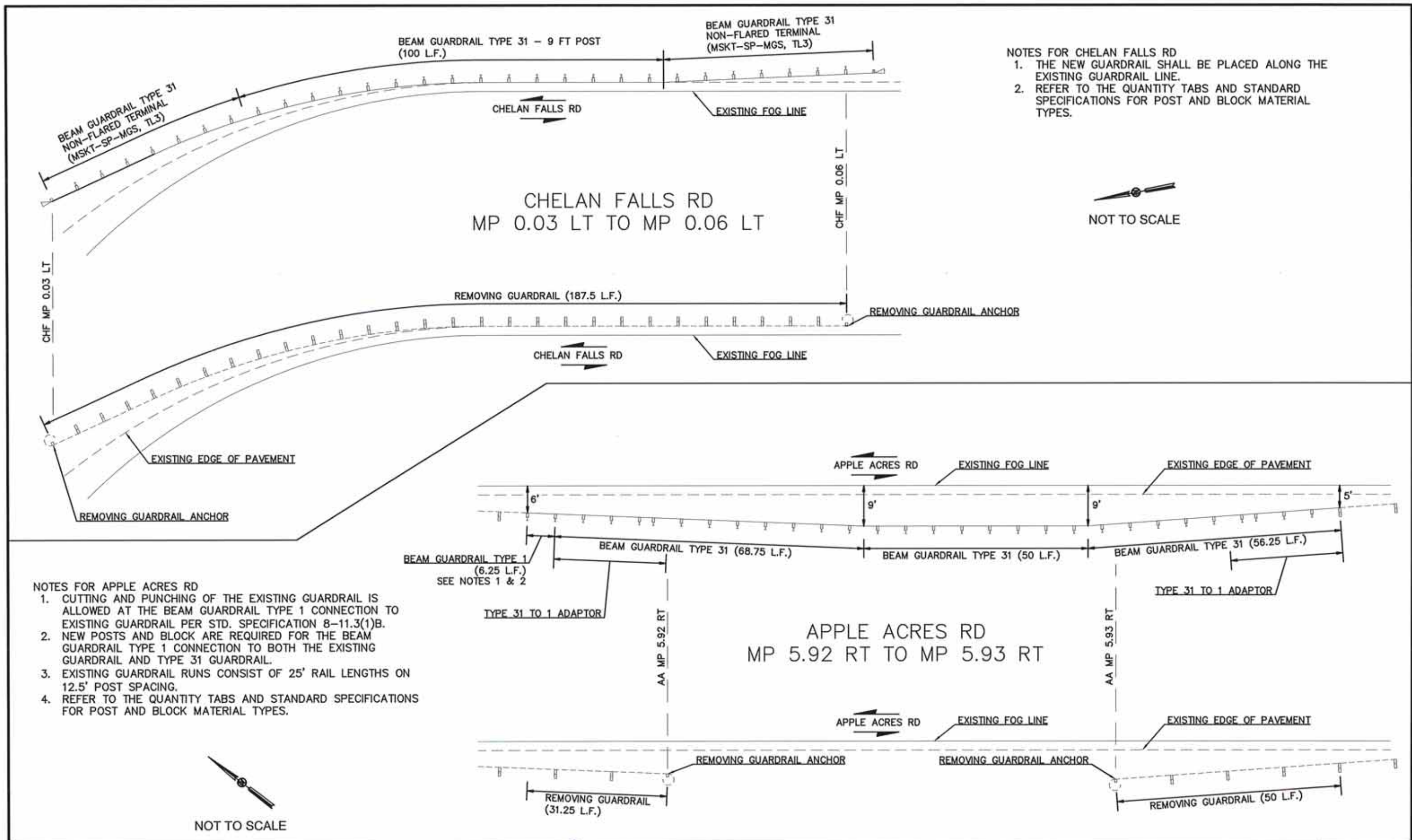
COUNTYWIDE  
BARRIER TERMINALS - 2025  
Roadway Safety Improvement Project

GUARDRAIL DETAILS

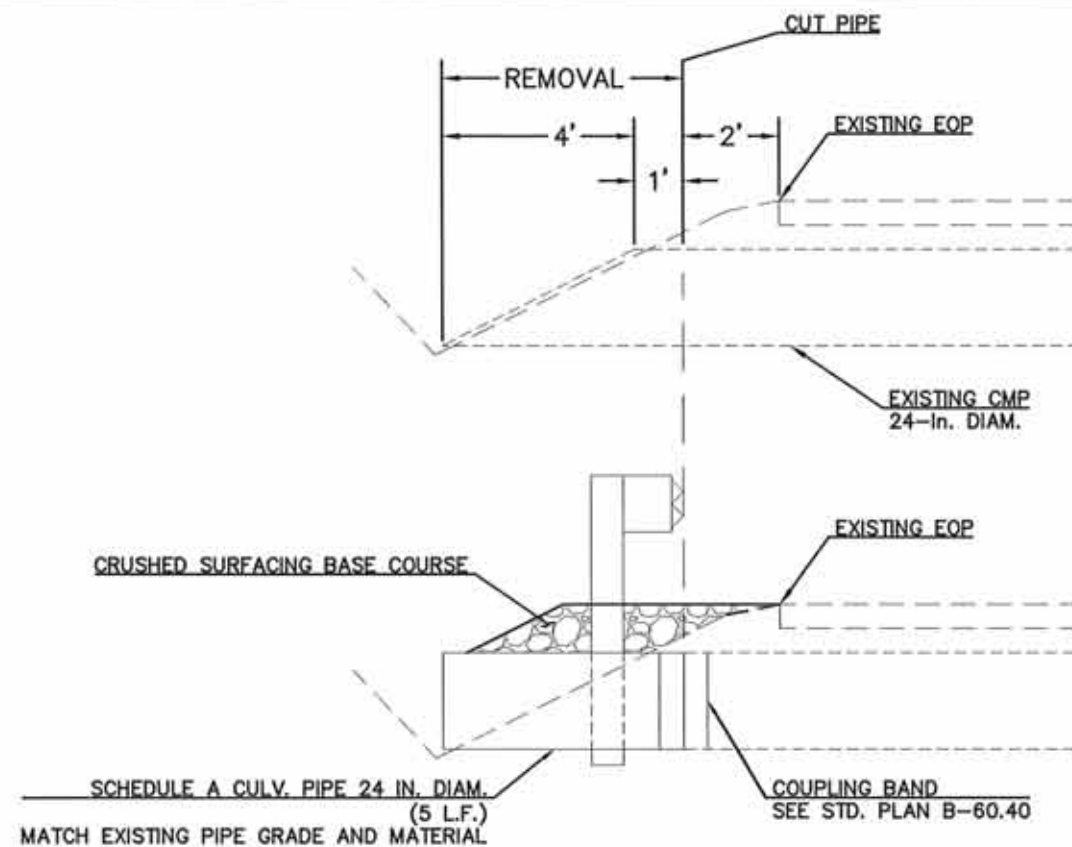
C.R.P. 751

Dwg. No. Sheet No.  
G4 12



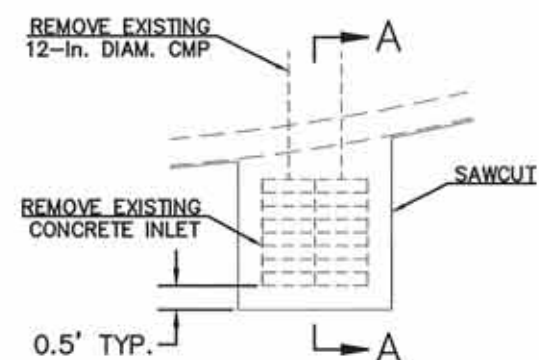




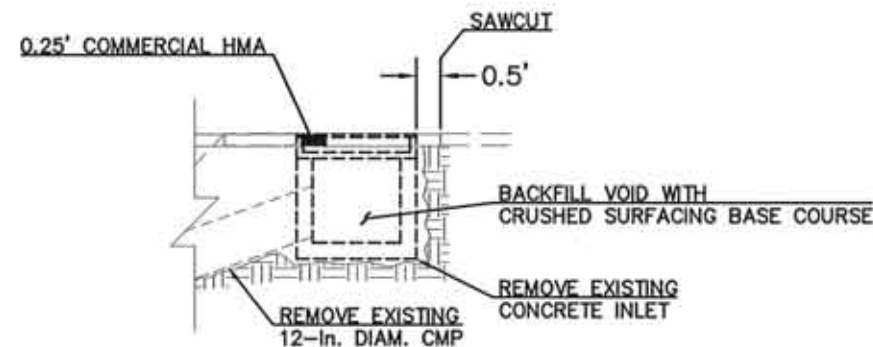


DRAINAGE DETAIL  
CHUMSTICK HWY  
MP 1.44 LT  
NOT TO SCALE

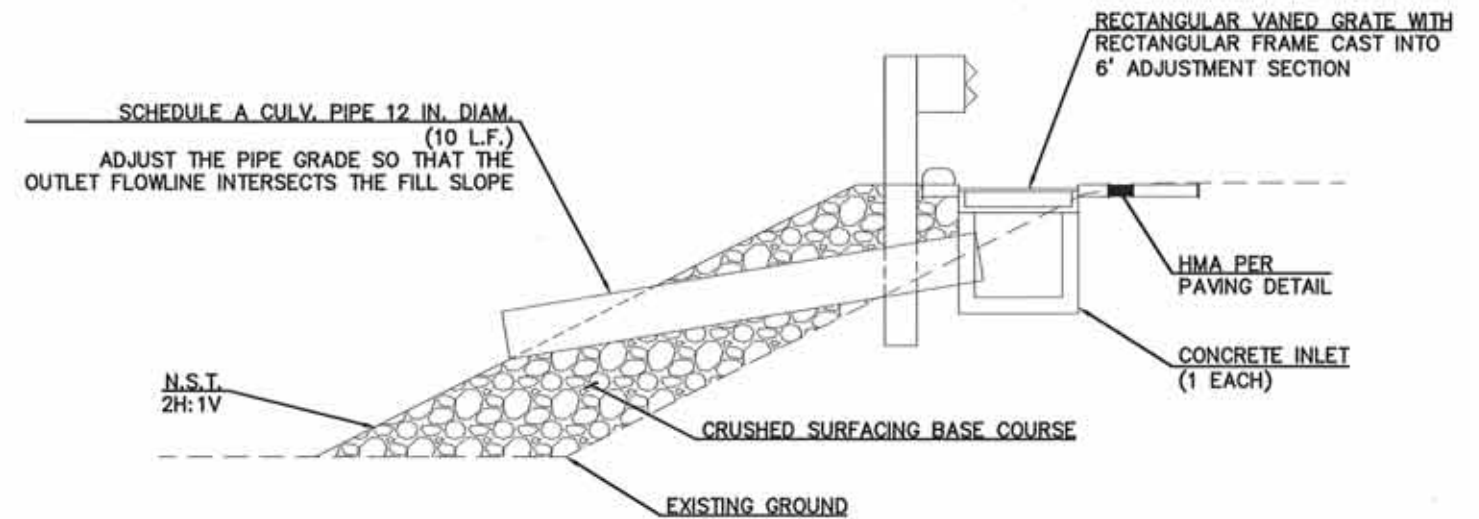
NOTES FOR CHUMSTICK HWY MP 1.44 LT  
1. REFER TO SPECIAL PROVISION REMOVAL OF OBSTRUCTIONS.



EXISTING INLET PLAN VIEW  
BEAVER VALLEY RD  
MP 16.10 LT  
NOT TO SCALE

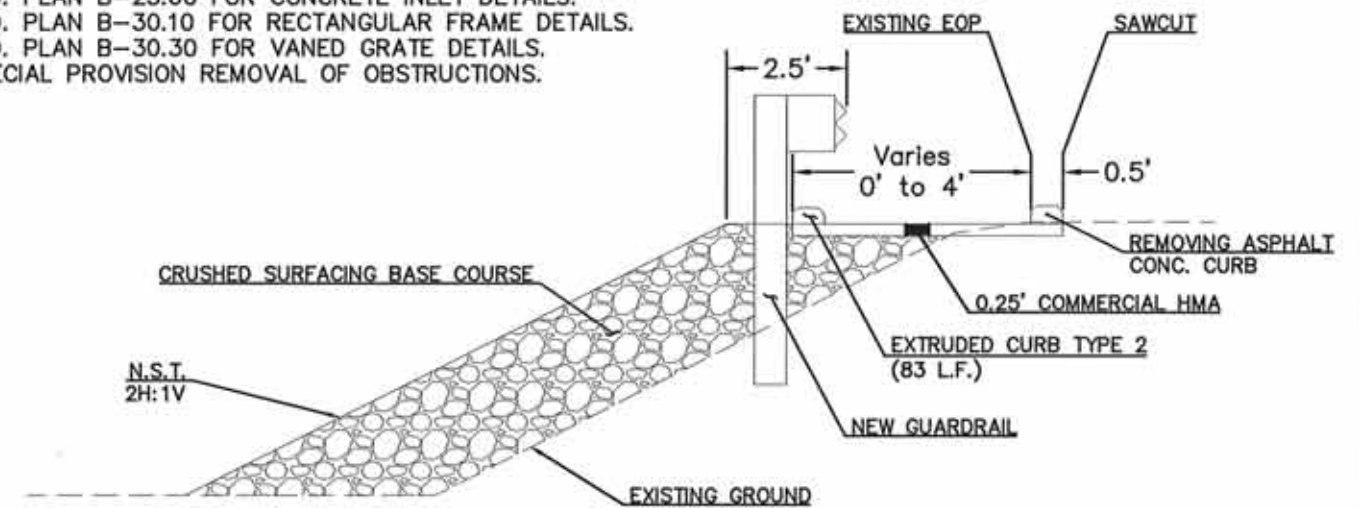


SECTION A  
BEAVER VALLEY RD  
MP 16.10 LT  
NOT TO SCALE



DRAINAGE DETAIL  
BEAVER VALLEY RD  
MP 16.10 LT  
NOT TO SCALE

NOTES FOR BEAVER VALLEY RD MP 16.10 LT  
1. EXISTING CURB, PAVEMENT, AND INLET MAY BE DISPOSED OF IN  
THE FILL PER STD. SPECIFICATION 2-02.3(3).  
2. REFER TO STD. PLAN B-25.60 FOR CONCRETE INLET DETAILS.  
3. REFER TO STD. PLAN B-30.10 FOR RECTANGULAR FRAME DETAILS.  
4. REFER TO STD. PLAN B-30.30 FOR VANED GRATE DETAILS.  
5. REFER TO SPECIAL PROVISION REMOVAL OF OBSTRUCTIONS.



PAVING DETAIL  
BEAVER VALLEY RD  
MP 16.10 LT  
NOT TO SCALE

FILE NAME: N:\Projects\CRP\CRP751_Countywide Barrier Terminals 2025\Design\Drawings\CRP751 Plan Sheets.dwg	DESIGNED BY: S. Honeycutt, PE	REVISIONS	DATE	BY
REVIEWED BY: J. Potick, PE				
B. Saxton				
DRAWN BY: S. Honeycutt				
PLOT DATE: 7/7/2025	AS-BUILT			



Chelan County  
Public Works Department  
316 Washington Street, Suite 402  
Wenatchee, Washington, 98801  
509.667.6415  
www.co.chelan.wa.us



COUNTYWIDE  
BARRIER TERMINALS - 2025  
Roadway Safety Improvement Project  
DRAINAGE AND PAVING DETAILS

C.R.P. 751

Dwg. No. DP1  
Sheet No. 14



## SIGN SPACING = X (1)

Rural Highways	60 / 65 MPH	800'+-
Rural Roads	45 / 55 MPH	500'+-
Urban Arterials & Rural Roads	35 / 40 MPH	350'+-
Rural Roads, Urban Arterials, Residential & Business Districts	25 / 30 MPH	200'+- (2)
Urban Streets	25 MPH or Less	100'+- (2)

(1) All spacing may be adjusted to accommodate intersections and driveways.  
(2) This spacing may be reduced in urban areas to fit roadway conditions.

## BUFFER DATA

### LONGITUDINAL BUFFER SPACE = B

SPEED (MPH)	25	30	35	40	45	50	55	60
LENGTH (feet)	155	200	250	305	360	425	495	570

### TRANSPORTABLE ATTENUATOR ROLL AHEAD DISTANCE = R

TYPICAL VEHICLE LOADED WEIGHT (LBS)	POSTED SPEED (mph)	STATIONARY OPERATION (feet)
HOST VEHICLE 9,900 TO 22,000	< 45	100
	45-55	123
	> 55	172
HOST VEHICLE > 22,000	< 45	74
	45-55	100
	> 55	150

### PROTECTIVE VEHICLE (WORK VEHICLE) = R (1)

(1) No specific distance for protective vehicle. Protective vehicle may be a work vehicle strategically positioned to shield the work area.

## Pilot Car Operations

FOR PILOT CAR OPERATIONS THE FOLLOWING SIGNS SHALL BE REQUIRED TO SUPPLEMENT THE SIGNS SHOWN ON THIS PLAN (1)

G20-4 36" X 18" BLACK ON ORANGE <b>PILOT CAR FOLLOW ME</b> (ON PILOT CAR)	G25-101 (1) 24" X 18" BLACK ON WHITE <b>STOP WAIT FOR PILOT CAR</b> (FOR ROAD APPROACHES AND DRIVEWAYS)
---	--

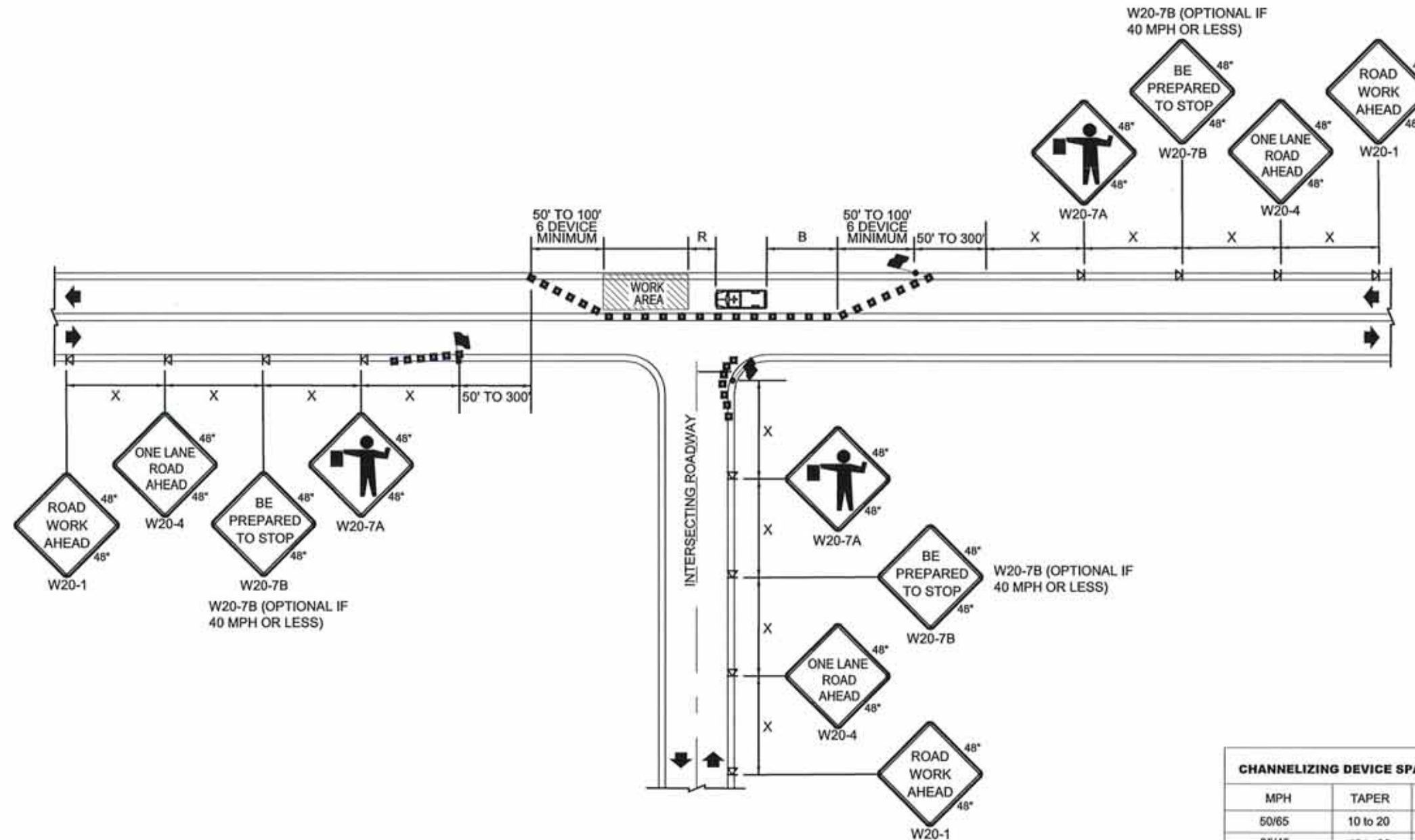
(1) Pilot car shall be utilized when the work area exceeds 0.5 miles in length.  
(2) Sign G25-101 is not required to be aluminum substrate and can be made of alternative materials

### CHANNELIZING DEVICE SPACING (FEET)

MPH	TAPER	TANGENT
50/65	10 to 20	80
35/45	10 to 20	60
25/30	10 to 20	40

### NOTES:

- UNLESS OTHERWISE STATED, ALL SIGNS SHOWN ARE CONSTRUCTION SIGNS CLASS B WITH BLACK LEGEND ON ORANGE BACKGROUND.
- EXTENDING THE CHANNELIZING DEVICE TAPER ACROSS SHOULDER IS RECOMMENDED.
- CHANNELIZING DEVICES ARE REQUIRED AT ALL TAPERS.
- CHANNELIZING DEVICES ARE REQUIRED TO SEPARATE TRAFFIC FROM THE WORK AREA.
- CHANNELIZING DEVICES ARE RECOMMENDED TO SEPARATE TRAFFIC FROM THE WORK AREA WHEN A PILOT CAR IS USED.
- A MINIMUM OF THREE (3) TRAFFIC CONES SHALL BE PLACED IN FRONT OF ALL FLAGGER LOCATIONS.
- NIGHT WORK REQUIRES ADDITIONAL ROADWAY LIGHTING AT FLAGGING STATIONS. SEE THE STANDARD SPECIFICATIONS FOR ADDITIONAL REQUIREMENTS.
- A PILOT CAR SHALL BE UTILIZED WHEN THE WORK AREA EXCEEDS 0.5 MILES IN LENGTH OR WHEN MULTIPLE WORK AREAS ARE USED CONCURRENTLY.



## LEGEND

	CONSTRUCTION SIGN
	TEMPORARY TRAFFIC CONTROL DEVICES (1)
	FLAGGING STATION
	PROTECTIVE VEHICLE w/ WARNING BEACON

(1) TRAFFIC SAFETY DRUMS MAY BE USED AT LOCATIONS SHOWN AS TRAFFIC CONES.

## ALTERNATING ONE-WAY TRAFFIC FLAGGER CONTROLLED OR PILOT CAR CONTROLLED

NOT TO SCALE

FILE NAME: N:\Projects\CRP\CRP751\_Countywide Barrier Terminals 2025\Design\Drawings\CRP751 Plan Sheets.dwg

DESIGNED BY: S. Honeycutt, PE	REVISIONS	DATE	BY
REVIEWED BY: J. Patrick, PE			
B. Saxton			
DRAWN BY: S. Honeycutt			
PLOT DATE: 7/7/2025	AS-BUILT		



Chelan County  
Public Works Department  
316 Washington Street, Suite 402  
Wenatchee, Washington, 98801  
509.667.6415  
www.co.chelan.wa.us



COUNTYWIDE  
BARRIER TERMINALS - 2025  
Roadway Safety Improvement Project

TRAFFIC CONTROL PLAN

C.R.P. 751

Dwg. No. TC1  
Sheet No. 15

15