



Chelan County Public Works Department

316 Washington Street, Suite 402
Wenatchee, Washington

December 19, 2025

Addendum No. 1

Page 1 of 4

Attention: All bidders and planholders

RE: CRP 650, Totem Pole Road Phase I Road Improvement Project

You are hereby notified of the following changes to the Contract Documents, Special Provisions, Standard Specifications, Plans and other documents comprising the contract documents for the above referenced project.

General Note

1. The bid opening date for Totem Pole Road Phase I has been extended one week to January 13, 2026.

Contract

1. The first sentence of the Call For Bids shall be removed and replaced with the following:

Sealed bids will be received by the Board of Chelan County Commissioners at their office at 400 Douglas Street, Wenatchee, Washington 98801 until **9:30:00 A.M. on January 13, 2026.**

1. Proposal Forms

REPLACE Bid Proposal Form, pages 4 through 6 in their entirety with the Bid Proposal Form attached to this Addendum No. 1.

In summary, the Bid Proposal Form has been REVISED as follows:

- Bid Item 10 – Quantity revised
- Bid Item 11 – Quantity revised
- Bid Item 15 – Item name changed to reflect 4" underdrain pipe
- Bid Item 43 – Quantity revised
- Bid Item 44 – NEW BID ITEM "Paint Line" with new quantity shown
- Bid Item 51 – Bid Item for Portable Changeable Message Sign removed
- Bid Item 58 – Blank bid item removed from proposal
- Bid Items 44-74 – Items re-numbered to match changes
- All "Force Account" and "Calc" amounts added to proposal

Contract Special Provisions

1. On Page SP-9, Section 1-02.12, replace the first paragraph with the following:

The bid opening date for this project is *** January 13, 2026 ***. Bids received will be publicly opened and read after 9:30:00 A.M. Pacific Time on this date.

2. Remove Section 1-05.14 Cooperation with Other Contractors:

Delete lines 41-52, Sheet SP-21, and lines 1-8, Sheet SPU-22.

3. Add new text to Special Provisions page SP-54, at line 47:

1-08.1(9) Submittal of Executed Subcontracts

(April 22, 2025 APWA GSP, Option B)

Section 1-08.1(9) content and title are deleted and replaced with the following:

Vacant

4. On Page SP-68, deleted the third paragraph in its entirety as it extends onto SP-69 and replace with the following:

No separate payment shall be made for haul and disposal of waste materials, backfill materials – conditioning, placement, and compaction, or other related work elements/activities for which a specific pay item is not listed, unless a specific bid item is listed for such material. These items shall be incidental to the work, and included in the unit price.

If dewatering as described in Section 2-09 is required during excavation, it shall be paid for by force account in accordance with Section 1-09.6.

5. On Page SP-115, add the following new text at line 5:

The fifth, sixth, and seventh paragraphs of Section 7-09.5 are deleted and replaced with the following:

If rock excavation as described in Section 7-09.3(7)B is required during trench excavation, it shall be paid for by force account in accordance with Section 1-09.6.

If unsuitable materials as described in Section 7-09(8) are found and require excavation and backfill, it shall be paid for by force account in accordance with Section 1-09.6.

6. On Page SP-123 in Section 8-15.2 Materials, add the following prior to the section on Blocks:

The Lowest compressive strength of the concrete collar and pad at Outfall Protection Area must be 4,000 psi.

7. On page SP-126 in Section 8-15.3 Construction Requirements, remove and replace paragraphs 3 through 6 with the following:

Ensure the prepared subgrade provides a smooth, firm, and unyielding foundation for the mats.

When vegetation is required, distribute seed on the prepared topsoil subgrade before installation of the concrete mats in accordance with the specifications.

Install mats to the line and grade shown on the plans and per the manufacturer's guidelines. The manufacturer or authorized representative will provide technical assistance during preparation and installation of the concrete block mats as needed.

Provide a minimum 18 in. deep concrete mat key-in trench at all edges noted in the Contract Plans.

8. On Page SP-127 in Section 8-15.5 Payment, remove and replace the second paragraph with the following:

The unit Contract price per lump sum of the item "Outfall Protection" shall be full payment to complete the Work as specified and shown in the Plans. This price is full compensation for furnishing, loading and transporting, placing concrete block mats and underlayments including geogrid; excavation and disposal; grading Outfall Protection area including fill placement and compaction around the pipe end, furnishing and placing topsoil and seed mix; installing and furnishing Class 4,000 concrete collar around beveled pipe end, and equipment, labor, materials, tools, and incidentals. Unless listed as a separate bid item, all materials, labor, equipment and incidentals necessary to install Outlet Protection shall be included in this bid item.

Contract Plans

1. On Plan Sheet 31, remove Note 8 and replace with the following Note 8:

Top of wall condition varies per grading plans. Concrete cap and edge to be reviewed in shop drawings. Railing Post connection on concrete cap and edge; thickened edge of concrete sidewalk; or embedded tubes behind face of wall per WSDOT Standard Plan L-5.10; or the WSDOT Geotechnical Design Manual Preapproved Wall Appendix 15 (varies by proprietary wall system selected); or approved equivalent designed by contractor. Visible wall cap color and finish to match wall facia to be reviewed in shop drawing submittal.

2. Detour signing shall be installed as Class A signs:

On Plan Sheets 49 and 50, DT1 and DT2, the sign legend shall be modified to show that all signs on these sheets are to be Class A signs, except those mounted on Type 3 Barricades. No Class B signs shall be allowed for the detour signing.

3. Remove the following plan sheets and replace in their entirety with attached Addendum No. 1 Plan Sheets:

DR1, DD2, GN2, RS1, PV2, PR1, PR2, PR3, DW2, CH1, CH2

Questions and Answers

1. Question: Will you accept alternates to the water quality unit in lieu of Contech Stormfilter?

Answer: For this project, per the Plans and Special Provisions, the only acceptable water quality unit is the Contech Stormfilter.

2. Question: With recent DBE program changes, is the Bidder Questionnaire (WSDOT Form #272-022) still required for this bid proposal?

Answer: Yes, to be a responsive bid, include WSDOT Form #272-022 as stated in the Bidding Instructions and Proposal.

3. Question: Does the quantity shown for Gravel Borrow Incl. Haul include the quantity needed for construction of the structural earth wall system?

Answer: The quantity in the proposal only includes the gravel borrow needed to construct the roadway as shown in the roadway profiles for underneath the roadway sections. The gravel borrow quantity for the structural earth wall may vary based on which type of wall system/manufacture each bidder uses, and is not included in quantities shown in the proposal.

4. Question: Where is the 65' of pipe removal? Plan Sheet 21 shows the pipe removal end, but where is the beginning?

Answer: The 65' of pipe removal is intended to remove the existing pipe from the location shown as "end" down to the existing outfall into Lake Chelan.

5. Question: Is Chelan County providing a dump site for roadway excavation?

Answer: At this time, Chelan County is not providing a dump site location for roadway excavation materials.

6. Question: Bid Item #4 (Removing Drainage Structure) shows a quantity of 3, but only two are called out on Sheet 7.

Answer: The third drainage structure to be removed is shown on Sheet 22, DR2, at Sta. 105+81.27, 8.6' RT.

All bidders will be required to furnish the Board of Chelan County Commissioners with evidence of the receipt of this addendum by noting on the proposal sheet.

The new bid date for this project is January 13, 2026.

Addendum Number 1 is hereby incorporated in and made part of the contract documents, and its terms and conditions are fully binding on the plan holder and contractor when awarded and when formally executed.

Chelan County Public Works



Josh Patrick, P.E.
Assistant County Director

Attachment:

BID PROPOSAL

Totem Pole Road Improvements – Phase 1 CRP 650

To: Board of Chelan County Commissioners
400 Douglas Street, Wenatchee, Washington 98801

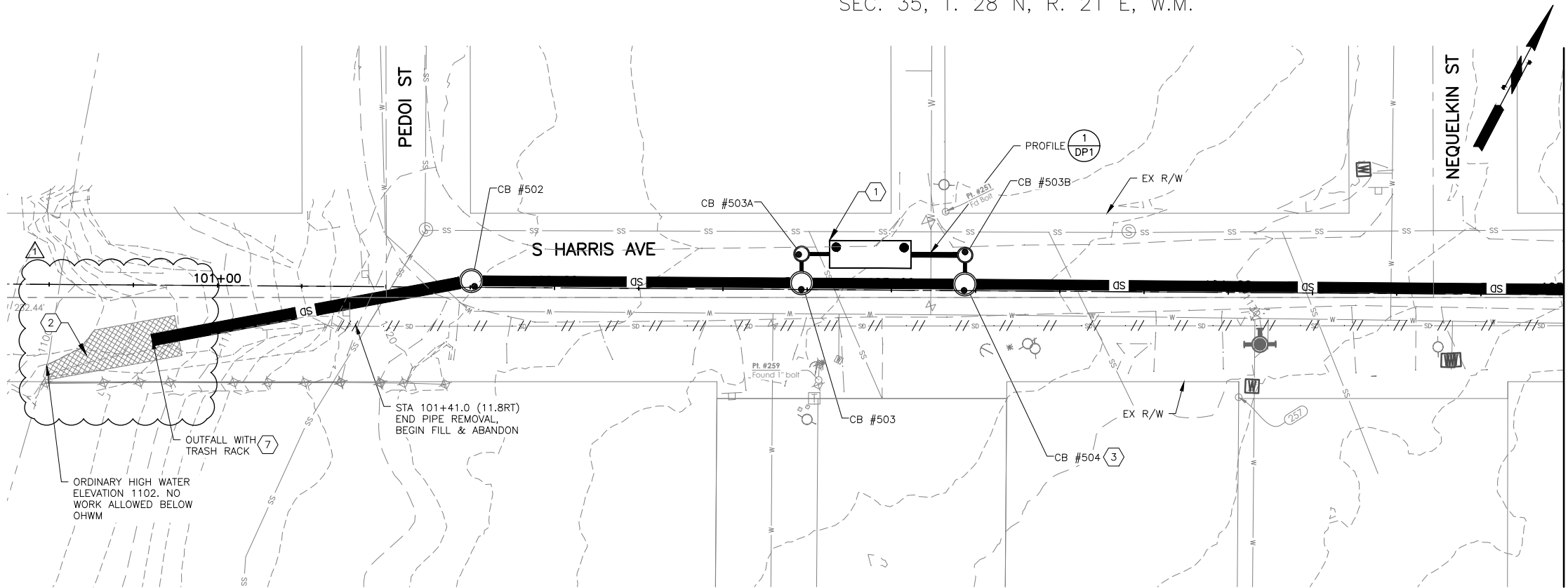
The undersigned certify that they have examined the location of the Totem Pole Road Improvements – Phase 1, County Road Project No. 650 (CRP 650) and read and thoroughly understand the plans, specifications and contract governing the work embraced in this improvement or as much thereof as can be completed with the money available, in accordance with the said plans, specifications, contract and the following schedule:

NOTE: Unit prices for all items, all extensions, and total amount of bid, shall be shown.

ITEM NO.	QTY.	UNIT	CONTRACT ITEMS	UNIT PRICE Dollars	AMOUNT Dollars
1	1	LS	Mobilization		
2	1	LS	Clearing and Grubbing		
3	1	EST	Archeological and Historical Salvage	\$10,000.00	\$10,000.00
4	3	EA	Removing Drainage Structure		
5	1	LS	Removal of Structures and Obstructions		
6	2,830	LF	Sawcutting Existing Pavement		
7	50	LF	Remove and Reinstall Fence		
8	65	LF	Removing Existing Pipe		
9	441	LF	Fill and Abandon Existing Pipe		
10	1,400	CY	Roadway Excavation Incl. Haul		
11	1,300	TON	Gravel Borrow Incl. Haul		
12	2,630	TON	Crushed Surfacing Base Course		
13	240	TON	Crushed Surfacing Top Course		
14	2	EA	Grate Inlet Type 2		
15	335	LF	Underdrain Pipe 4 In. Diam		
16	31	LF	Drain Pipe 4 In. Diam.		
17	7	EA	Catch Basin Type 1		
18	6	EA	Catch Basin Type 2 48 In. Diam.		
19	5	EA	Catch Basin Type 2 60 In. Diam.		
20	9	EA	Catch Basin Type 2 72 In. Diam.		
21	2,233	LF	Testing Storm Sewer Pipe		

ITEM NO.	QTY.	UNIT	CONTRACT ITEMS	UNIT PRICE Dollars	AMOUNT Dollars
22	218	LF	Schedule A Storm Sewer Pipe 12 In. Diam.		
23	58	LF	Schedule A Storm Sewer Pipe 18 In. Diam.		
24	273	LF	Schedule A Storm Sewer Pipe 24 In. Diam.		
25	84	LF	Schedule A Storm Sewer Pipe 30 In. Diam.		
26	1,479	LF	Schedule A Storm Sewer Pipe 36 In. Diam.		
27	97	LF	Schedule A Storm Sewer Pipe 42 In. Diam.		
28	1	EA	Catch Basin Type 2 72 In. Diam. w/Flow Splitter		
29	1	LS	Water Quality Facility - 8x24		
30	1910	SF	Structural Earth Wall		
31	10	CY	Cement Conc. Pavement		
32	1,050	TON	HMA CL 3/8" PG 64H-28		
33	310	TON	Commercial HMA		
34	1	CALC	Job Mix Compliance Price Adjustment	\$3,780.00	\$3,780.00
35	1	CALC	Compaction Price Adjustment	\$4,200.00	\$4,200.00
36	1	CALC	Asphalt Cost Price Adjustment	\$2,398.00	\$2,398.00
37	1	EST	Erosion/Water Pollution Control	\$20,000.00	\$20,000.00
38	28	EA	Inlet Protection		
39	1	LS	Outfall Protection		
40	810	LF	High Visibility Silt Fence		
41	2,340	LF	Cement Conc. Traffic Curb and Gutter		
42	130	LF	Cement Conc. Pedestrian Curb		
43	1718	LF	Painted 6" White Wide Line		
44	1738	LF	Paint Line		
45	180	SF	Plastic Crosswalk Line		
46	40	LF	Plastic Stop Line		
47	5	EA	Plastic Bicycle Lane Symbol		
48	1	LS	Pedestrian Traffic Control		
49	97	SF	Permanent Signing		
50	1	LS	Illumination System		

ITEM NO.	QTY.	UNIT	CONTRACT ITEMS	UNIT PRICE Dollars	AMOUNT Dollars
51	1	LS	Project Temporary Traffic Control		
52	1	LS	Rectangular Rapid Flashing Beacon - Mid-Block		
53	60	LF	Cement Conc. Rolled Curb and Gutter		
54	360	LF	Pedestrian Handrail		
55	2	EA	Adjust Manhole		
56	21,032	SF	Shoring or Extra Excavation Class B		
57	1	LS	Structure Surveying		
58	1	LS	ADA Features Surveying		
59	580	SY	Cement Conc. Sidewalk		
60	70	SY	Cement Conc. Curb Ramp Type Parallel A		
61	10	SY	Cement Conc. Curb Ramp Type Parallel B		
62	20	SY	Cement Conc. Curb Ramp Type Perpendicular A		
63	38	SY	Construction Geotextile For Separation		
64	2	EA	Connection to Drainage Structure		
65	170	SY	Cement Conc. Driveway Entrance Type 1		
66	1	LS	Record Drawings		
67	2	EA	Plugging Existing Pipe		
68	4	EA	Adjust Water Meter		
69	12	EA	Adjust Water Valve		
70	1	EA	Trash Rack		
71	1	FA	Property Restoration	\$48,000.00	\$48,000.00
72	5	EA	Remove and Replace Monument Case and Cover		
73	1	FA	Force Account Unknown Utility Repair	\$25,000.00	\$25,000.00
TOTAL: \$					



CONSTRUCTION NOTES:

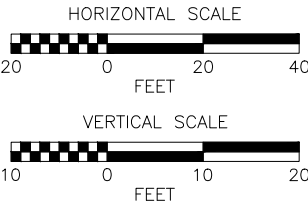
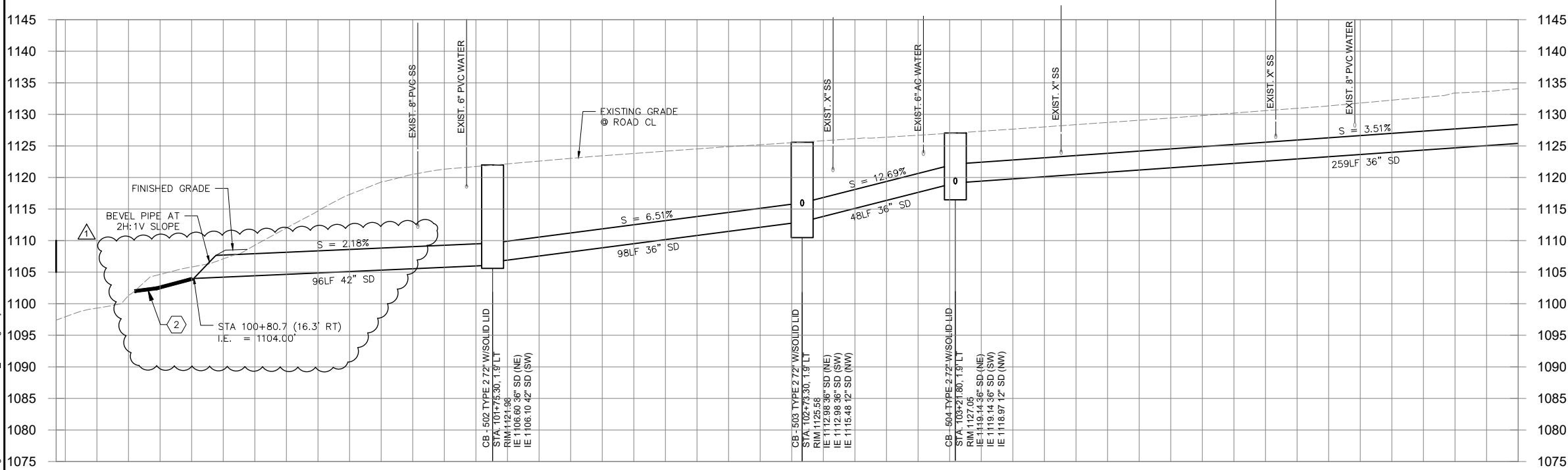
1. INSTALL WATER QUALITY FACILITY PER DETAIL ON SHEET DD1.
2. CONSTRUCT OUTFALL PROTECTION PER THE PIPE OUTFALL PROTECTION DETAIL ON SHEET DD2.
3. INSTALL FLOW SPLITTER PER THE FLOW SPLITTER DETAIL ON SHEET DD2.
7. INSTALL TRASH RACK PER DETAIL ON SHEET DD3.

LEGEND:

- CATCH BASIN, TYPE 1
- CATCH BASIN, TYPE 2, VANED GRATE
- CATCH BASIN, TYPE 2, SOLID LID
- GRATE INLET TYPE 2
- STORM DRAINAGE PIPE
- DRAIN PIPE
- REMOVE EXISTING PIPE
- FILL & ABANDON EXISTING PIPE
- PROFILE#
- SHEET#

GENERAL NOTES:

1. CATCH BASINS, GRATE INLETS AND STORM DRAINAGE PIPING SHALL BE INSTALLED PER WSDOT STD PLANS AND SPECIFICATIONS.
2. VANED GRATES SHALL BE INSTALLED PER WSDOT STD PLAN B-30.30, SOLID LIDS SHALL BE INSTALLED PER WSDOT STD PLAN B-30.70.
3. PIPE LENGTHS ARE HORIZONTAL DISTANCES FROM CENTER OF STRUCTURE, UNLESS NOTED OTHERWISE. INVERT ELEVATIONS ARE DERIVED FROM PIPE SLOPES CARRIED TO THE CENTER OF THE DRAINAGE STRUCTURE.
4. STRUCTURE STATION AND OFFSETS ARE NOTED AT THE CENTER OF STRUCTURE. RIM ELEVATIONS ARE NOTED AT THE CENTER OF GRATE OR LID.
5. ALL STORM DRAINAGE PIPE MATERIAL SHALL BE SCHEDULE A STORM SEWER PIPE UNLESS OTHERWISE NOTED.
6. UTILITY CROSSING ELEVATIONS SHOWN ARE APPROXIMATE. THE CONTRACTOR SHALL VERIFY UTILITY LOCATIONS AND ELEVATIONS.
7. FOR DRAINAGE DETAILS, SEE SHEETS DD1 TO DD3.



Dec 15, 2025 4:26pm ronniep C:\pw_osborn_working\dm50605\20220011-DR_PH1.dwg Layout Name: DR1

ADDENDUM 1	12/15/25		WM	JG
No.	Date	Revision	By	Appr.



Drawn By	Date
S. GOGIA	10/2025
Designed By	
J. GLOWATCH	10/2025
Checked By	
M. LO	10/2025
Approved By	
J. VAN WIE	10/2025

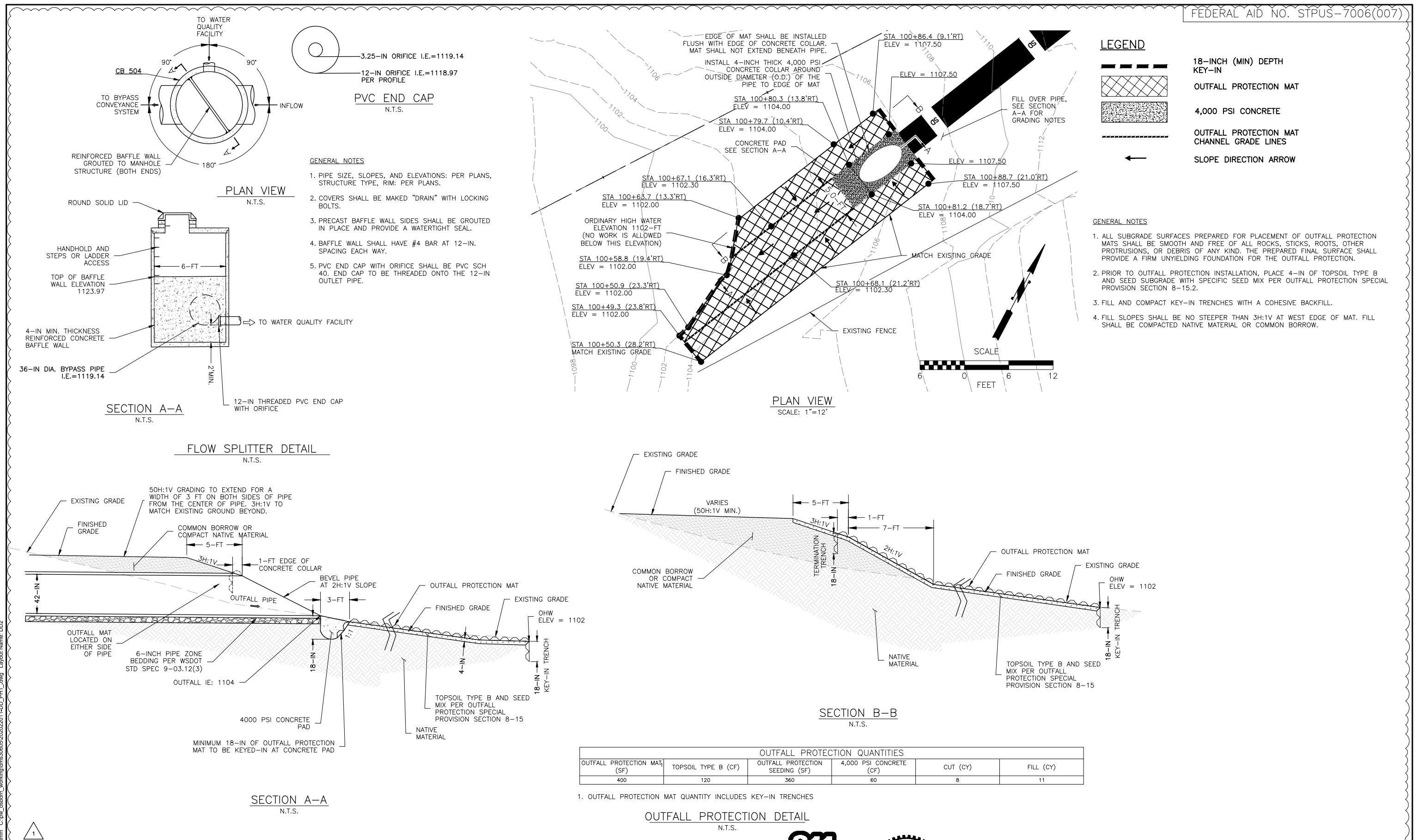
CRP
#650

Project Number
20220011

CHELAN COUNTY
TOTEM POLE ROAD PHASE 1

DRAINAGE PLAN

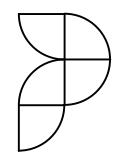
Drawing No.	DR1
Sheet No.	21
of Total	48



Dec 18, 2025 - 2:31pm neaton X:\Chelan County\Projects\20220011 - Totem Pole Rd. Prelim Engineering\CADD\02 - Plan Sheets\Totem Pole Rd SOUTH\20220011-GN-SD.dwg Layout Name: GN2

SUMMARY OF QUANTITIES					
ITEM NO.	TOTAL QUANTITY	STD. ITEM NO.	UNIT	ITEM	GROUP 1
					TAX RULE 171
					"TOTEM POLE ROAD (STBG FUNDED)"
				PREPARATION	
1	LUMP SUM	0001	L.S.	MOBILIZATION	L.S.
2	LUMP SUM	0035	L.S.	CLEARING AND GRUBBING	L.S.
3	1	0038	EST	ARCHAEOLOGICAL AND HISTORICAL SALVAGE	
4	3	0049	EACH	REMOVING DRAINAGE STRUCTURE	
5	LUMP SUM	0050	L.S.	REMOVAL OF STRUCTURES AND OBSTRUCTIONS	L.S.
6	2,830	NSTD	L.F.	SAWCUTTING EXISTING PAVEMENT	
7	50	NSTD	L.F.	REMOVE AND REINSTALL FENCE	
8	65	NSTD	L.F.	REMOVING EXISTING PIPE	
9	441	NSTD	L.F.	FILL AND ABANDON EXISTING PIPE	
				GRADING	
10	<div><div><div>⚠</div></div><div>1,400</div></div>	0310	C.Y.	ROADWAY EXCAVATION INCL. HAUL	
11	<div><div><div>1,300</div></div></div>	0431	TON	GRAVEL BORROW INCL. HAUL	
				SURFACING	
12	2,630	5100	TON	CRUSHED SURFACING BASE COURSE	
13	240	5120	TON	CRUSHED SURFACING TOP COURSE	
				DRAINAGE	
14	2	1054	EACH	GRATE INLET TYPE 2	
15	335	1160	L.F.	UNDERDRAIN PIPE 4 IN. DIAM.	
16	31	NSTD	L.F.	DRAIN PIPE 4 IN. DIAM.	
				STORM SEWER	
17	7	3091	EACH	CATCH BASIN TYPE 1	
18	6	3105	EACH	CATCH BASIN TYPE 2 48 IN. DIAM.	
19	5	3109	EACH	CATCH BASIN TYPE 2 60 IN. DIAM.	
20	9	3107	EACH	CATCH BASIN TYPE 2 72 IN. DIAM.	
21	2,233	3104	L.F.	TESTING STORM SEWER PIPE	
22	218	3151	L.F.	SCHEDULE A STORM SEWER PIPE 12 IN. DIAM.	
23	58	3541	L.F.	SCHEDULE A STORM SEWER PIPE 18 IN. DIAM.	
24	273	3542	L.F.	SCHEDULE A STORM SEWER PIPE 24 IN. DIAM.	
25	84	3544	L.F.	SCHEDULE A STORM SEWER PIPE 30 IN. DIAM.	
26	1,479	3545	L.F.	SCHEDULE A STORM SEWER PIPE 36 IN. DIAM.	
27	97	3546	L.F.	SCHEDULE A STORM SEWER PIPE 42 IN. DIAM.	
28	1	NSTD	EACH	CATCH BASIN TYPE 2 72 IN. DIAM. W/FLOW SPLITTER	
29	1	NSTD	L.S.	WATER QUALITY FACILITY-8X24	L.S.
				STRUCTURE	
30	1,910	7169	S.F.	STRUCTURAL EARTH WALL	
				CEMENT CONCRETE PAVEMENT	
31	10	5625	C.Y.	CEMENT CONC. PAVEMENT	
				HOT MIX ASPHALT	
32	1,050	5766	TON	HMA CL. 3/8 IN. PG 64H-28	
33	310	5875	TON	COMMERCIAL HMA	
34	1	5830	CALC	JOB MIX COMPLIANCE PRICE ADJUSTMENT	<div><div>CALC</div><div>⚠</div></div>
35	1	5835	CALC	COMPACTION PRICE ADJUSTMENT	<div><div>CALC</div></div>
36	1	5837	CALC	ASPHALT COST PRICE ADJUSTMENT	<div><div>CALC</div></div>

SUMMARY OF QUANTITIES					
ITEM NO.	TOTAL QUANTITY	STD. ITEM NO.	UNIT	ITEM	GROUP 1
					TAX RULE 171
					"TOTEM POLE ROAD (STBG FUNDED)"
				EROSION CONTROL AND ROADSIDE PLANTING	
37	1	6490	EST	EROSION/WATER POLLUTION CONTROL	<div>⚠️ EST</div>
38	28	6471	EACH	INLET PROTECTION	
39	LUMP SUM	6473	L.S.	OUTFALL PROTECTION	L.S.
40	810	6635	L.F.	HIGH VISIBILITY SILT FENCE	
				TRAFFIC	
41	2,340	6700	L.F.	CEMENT CONC. TRAFFIC CURB AND GUTTER	
42	130	6707	L.F.	CEMENT CONC. PEDESTRIAN CURB	
43	1,718	NSTD	L.F.	PAINTED 6" WHITE WIDE LINE	
44	1,738	6806	L.F.	PAINT LINE	
45	180	6857	S.F.	PLASTIC CROSSWALK LINE	
46	40	6859	L.F.	PLASTIC STOP LINE	
47	5	6867	EACH	PLASTIC BICYCLE LANE SYMBOL	
48	LUMP SUM	6869	L.S.	PEDESTRIAN TRAFFIC CONTROL	L.S.
49	97	6890	S.F.	PERMANENT SIGNING	
50	LUMP SUM	6904	L.S.	ILLUMINATION SYSTEM	L.S.
51	LUMP SUM	6971	L.S.	PROJECT TEMPORARY TRAFFIC CONTROL	L.S.
52	LUMP SUM	NSTD	L.S.	RECTANGULAR RAPID FLASHING BEACON- MID-BLOCK	L.S.
53	60	NSTD	L.F.	CEMENT CONC. ROLLED CURB AND GUTTER	
				OTHER ITEMS	
54	360	1945	L.F.	PEDESTRIAN HANDRAIL	
55	2	3080	EACH	ADJUST MANHOLE	
56	21,032	7008	S.F.	SHORING OR EXTRA EXCAVATION CLASS B	
57	LUMP SUM	7037	L.S.	STRUCTURE SURVEYING	L.S.
58	LUMP SUM	7042	L.S.	ADA FEATURES SURVEYING	L.S.
59	580	7055	SY	CEMENT CONC. SIDEWALK	
60	70	7058	SY	CEMENT CONC. CURB RAMP TYPE PARALLEL A	
61	10	7058	SY	CEMENT CONC. CURB RAMP TYPE PARALLEL B	
62	20	7058	SY	CEMENT CONC. CURB RAMP TYPE PERPENDICULAR A	
63	38	7530	SY	CONSTRUCTION GEOTEXTILE FOR SEPARATION	
64	2	9605	EACH	CONNECTION TO DRAINAGE STRUCTURE	
65	170	7059	SY	CEMENT CONC. DRIVEWAY ENTRANCE TYPE 1	
66	LUMP SUM	NSTD	L.S.	RECORD DRAWINGS (MINIMUM BID \$5,000)	L.S.
67	2	NSTD	EACH	PLUGGING EXISTING PIPE	
68	4	NSTD	EACH	ADJUST WATER METER	
69	12	NSTD	EACH	ADJUST WATER VALVE	
70	1	NSTD	EACH	TRASH RACK	
71	1	NSTD	FA	PROPERTY RESTORATION	<div>FA ⚠️</div>
72	5	NSTD	EACH	REMOVE AND REPLACE MONUMENT CASE AND COVER	<div>FA ⚠️</div>
73	1	NSTD	FA	FORCE ACCOUNT UNKNOWN UTILITY REPAIR	<div>FA ⚠️</div>



PERTEET
123 OHME GARDEN ROAD, SUITE 8
WENATCHEE, WA 98801
800.615.9900



Know what's below.
Call before you dig.



Drawn By N. EATON
Designed By M. WARNER
Checked By J. LEE
Approved By J. SAUGEN
Date 11/2025
11/2025
11/2025
11/2025

CRP
#650

Project Number
20220011

CHELAN COUNTY
TOTEM POLE ROAD PHASE 1
SUMMARY OF QUANTITIES

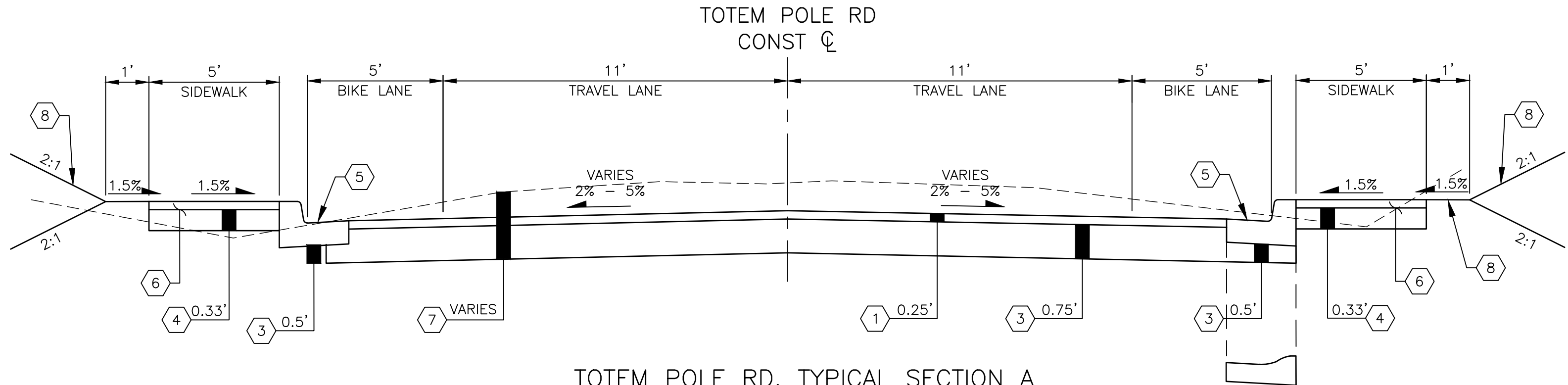
Drawing No.
GN2
Sheet No.
3
50
of Total

CONSTRUCTION NOTES:

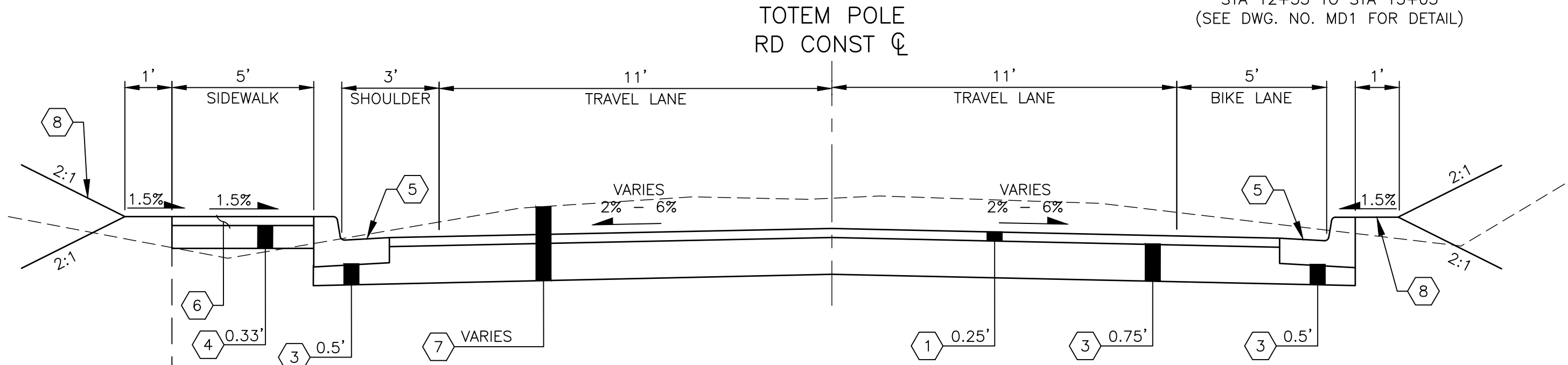
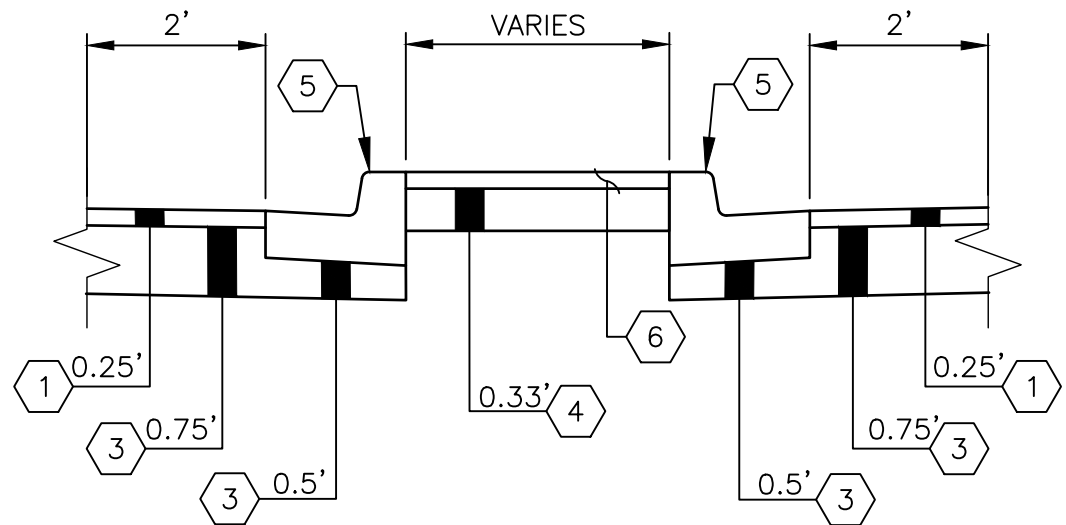
- 1 HMA CL 3/8 IN. PG 64H-28.
- 2 NOT USED.
- 3 CRUSHED SURFACING BASE COURSE (MAXIMUM LIFT 6 INCHES).
- 4 CRUSHED SURFACING TOP COURSE.
- 5 CEMENT CONC. TRAFFIC CURB AND GUTTER PER WSDOT STD PLAN F-10.12.
- 6 CEMENT CONC. SIDEWALK PER WSDOT STD PLAN F-30.10.
- 7 ROADWAY EXCAVATION INCL. HAUL.
- 8 PROPERTY RESTORATION.
- 9 TRENCH REPAIR. SEE DWG. NO. MD1 FOR DETAIL.
- 10 CEMENT CONC. DRIVEWAY.
- 11 COMMERCIAL HMA.

GENERAL NOTES:

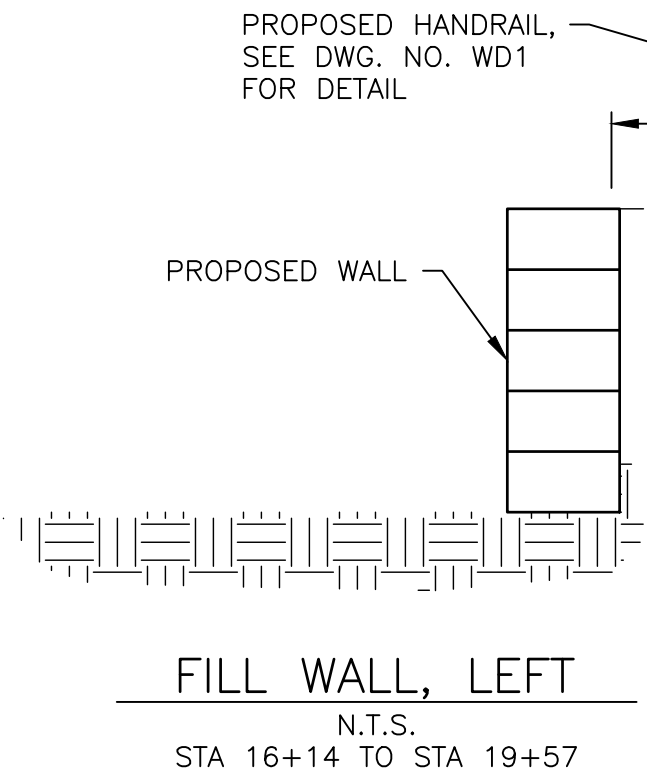
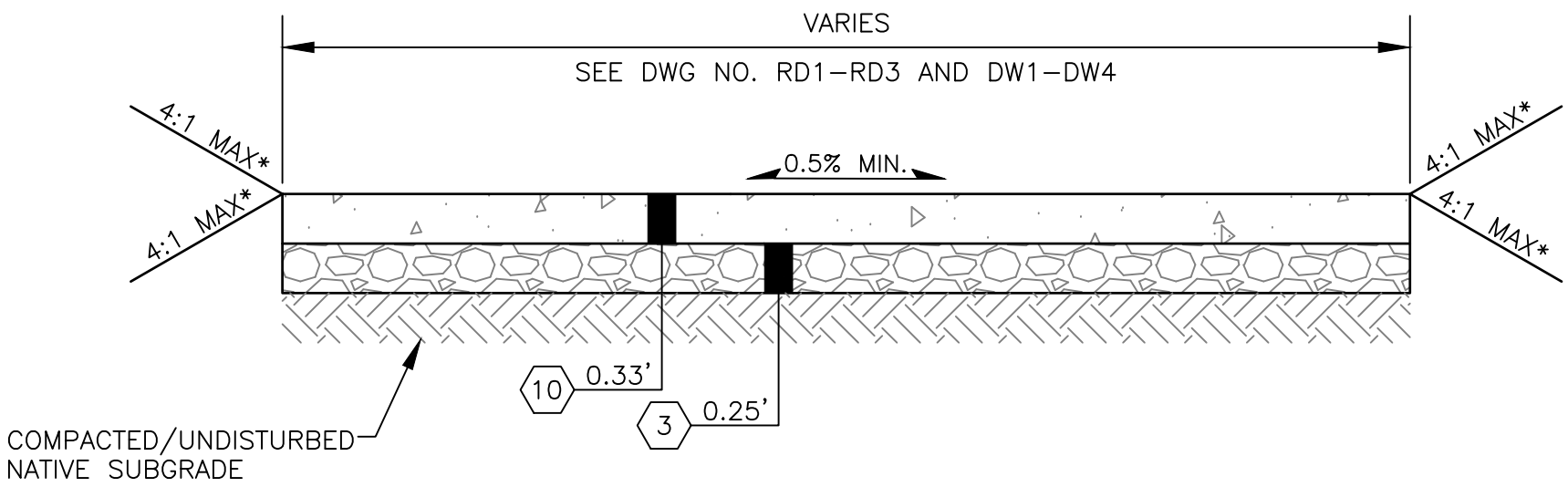
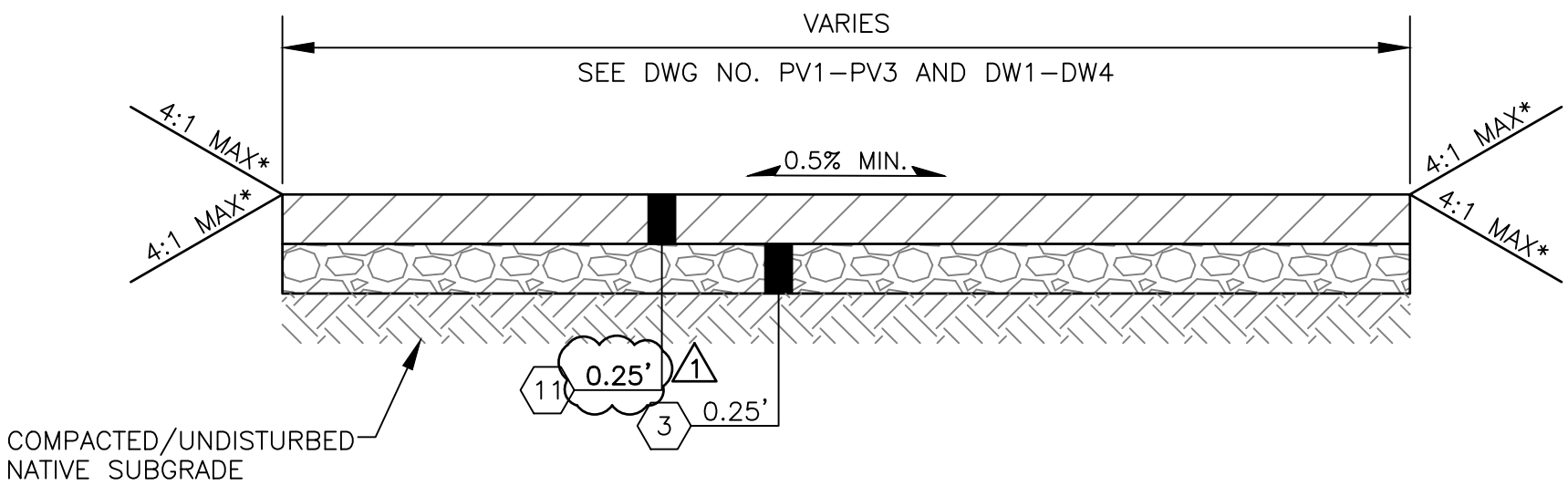
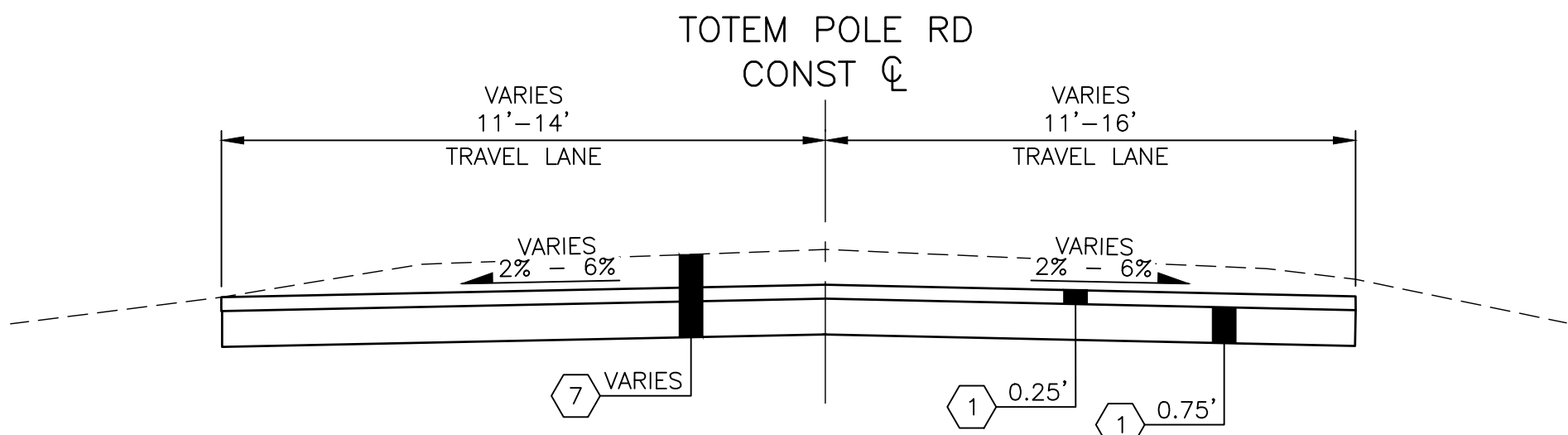
- 1. SEE DWG. NO. WP1 FOR WALL PLAN AND PROFILE INFORMATION, INCLUDED RAILING BASE INSTALLATION AND WALL CAP.
- 2. ALL DEPTH SHOWN ARE COMPACTED DEPTHS.
- 3. ROADWAY WIDTHS AND GRADES DO NOT APPLY AT INTERSECTIONS. SEE DWG. NO. PV1-PV3 FOR VARYING PAVEMENT WIDTHS AND DWG. NO. CR1-CR3 FOR CURB RETURN GRADING.
- 4. TRANSITIONS FROM PAVED DRIVEWAY APPROACHES TO EXISTING GRAVEL DRIVEWAY SHALL BE MADE WITH COMPACTED CRUSHED SURFACING BASE COURSE



CEMENT CONC. ROLLED CURB AND GUTTER
N.T.S.
STA 12+53 TO STA 13+05
(SEE DWG. NO. MD1 FOR DETAIL)



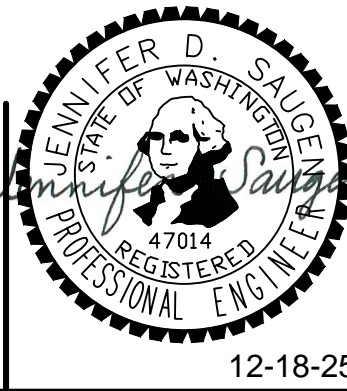
TOTEM POLE RD TYPICAL SECTION C
N.T.S.
STA 19+00 TO STA 19+50



Dec 18, 2025 - 1:56pm neaton X:\Chelan County\Projects\20220011 - Totem Pole Rd. Prelim Engineering\CADD\02 - Plan Sheets\Totem Pole Rd SOUTH\20220011-RS-SD.dwg Layout Name: RS1

No.	Date	Revision	By	Appr.
1	12/18/25	ADDENDUM #1	JS	JS

PERTEET
123 OHME GARDEN ROAD, SUITE 8
WENATCHEE, WA 98801
800.615.9900



Drawn By	Date
N. EATON	11/2025
Designed By	
M. WARNER	11/2025
Checked By	
J. LEE	11/2025
Approved By	
J. SAUGEN	11/2025

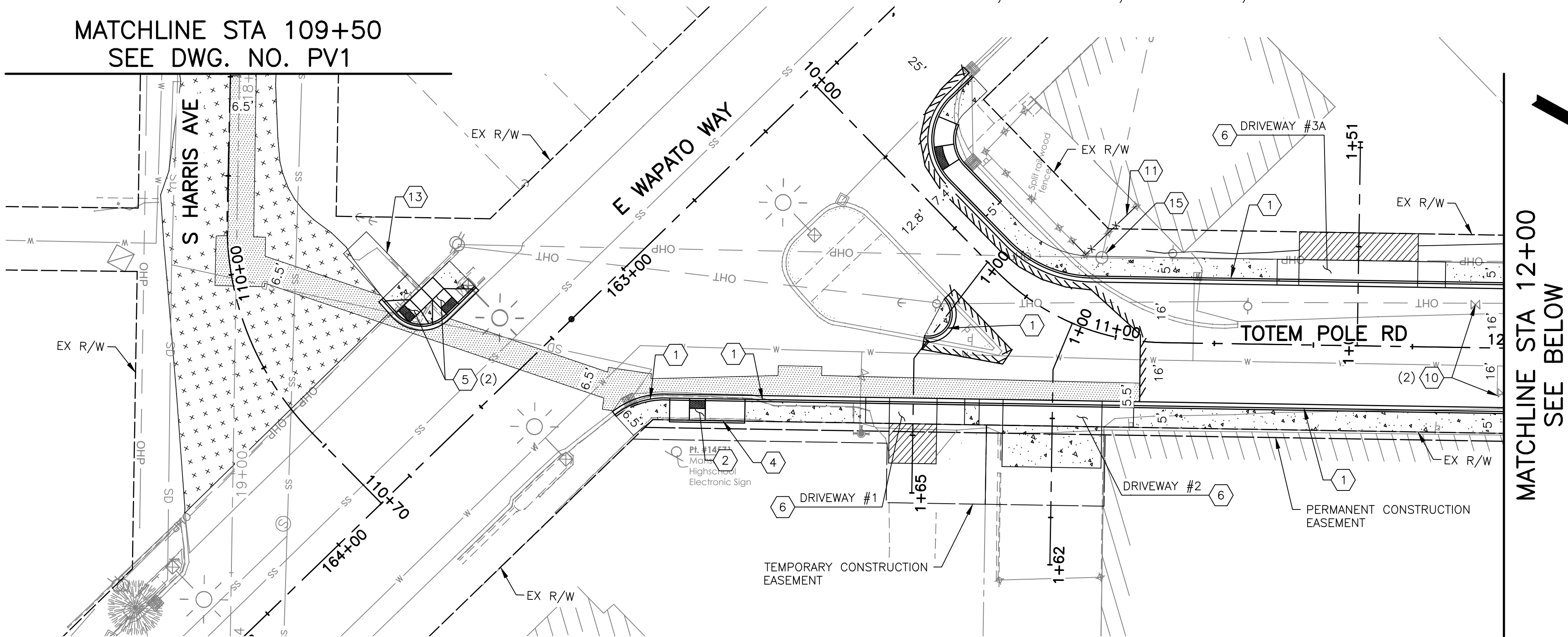
CRP #650
Project Number 20220011

CHELAN COUNTY
TOTEM POLE ROAD PHASE 1
TYPICAL ROADWAY SECTIONS

Drawing No. RS1
Sheet No. 9
50 of Total

SEC. 35, T. 28 N, R. 21 E, W.M.

MATCHLINE STA 109+50
SEE DWG. NO. PV1



MATCHLINE STA 12+00
SEE BELOW

CONSTRUCTION NOTES:

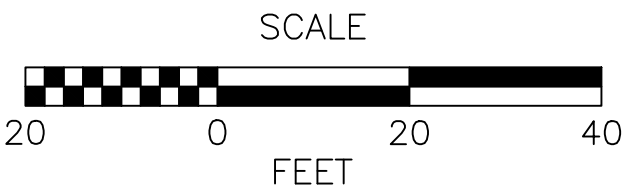
- CEMENT CONC. TRAFFIC CURB AND GUTTER PER WSDOT STD. PLAN F-10.12.
- CEMENT CONC. CURB RAMP TYPE PARALLEL A PER WSDOT STD. PLAN F-40.12.
- CEMENT CONC. CURB RAMP TYPE PARALLEL B PER WSDOT STD. PLAN F-40.12.
- CEMENT CONC. PEDESTRIAN CURB PER WSDOT STD PLAN F-10.12.
- CEMENT CONC. CURB RAMP TYPE PERPENDICULAR A PER WSDOT STD. PLAN F-40.15.
- CEMENT CONC. DRIVEWAY APPROACH PER CHELAN COUNTY STD. PLAN PW-31.
- ADJUST WATER METER BOX TO FINISH GRADE.
- ADJUST MANHOLE.
- CEMENT CONC. ROLLED CURB AND GUTTER PER DETAIL ON DWG. NO. MD1.
- ADJUST WATER VALVE BOX.
- REINSTALL FENCE.
- PEDESTRIAN HANDRAIL PER DETAIL ON DWG. NO. MD1.
- 13 HMA TRANSITION RAMP PER DETAIL ON SHEET MD1.
- 6-INCH SOLID WALL PVC PIPE. TO BE PAID FOR INCIDENTAL TO DRIVEWAY CONSTRUCTION.
- UTILITY TO BE RELOCATED BEHIND PROPOSED SIDEWALK PRIOR TO CONSTRUCTION (BY OTHERS)

LEGEND

- FULL DEPTH TRENCH REPAIR, SEE DETAIL DWG. NO. MD1
- CEMENT CONC. SIDEWALK PER WSDOT STD. PLAN F-30.10
- GRAVEL DRIVEWAY, 6" DEPTH.
- 3" COMMERCIAL HMA
- 2" OVERLAY HMA CL. 3/8 IN. PG 64H-28
- RETAINING WALL, SEE GENERAL NOTE 1
- FULL DEPTH PAVING LIMITS
- FILL LINE
- CUT LINE
- PROPOSED HANDRAIL

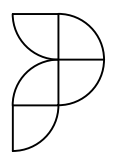
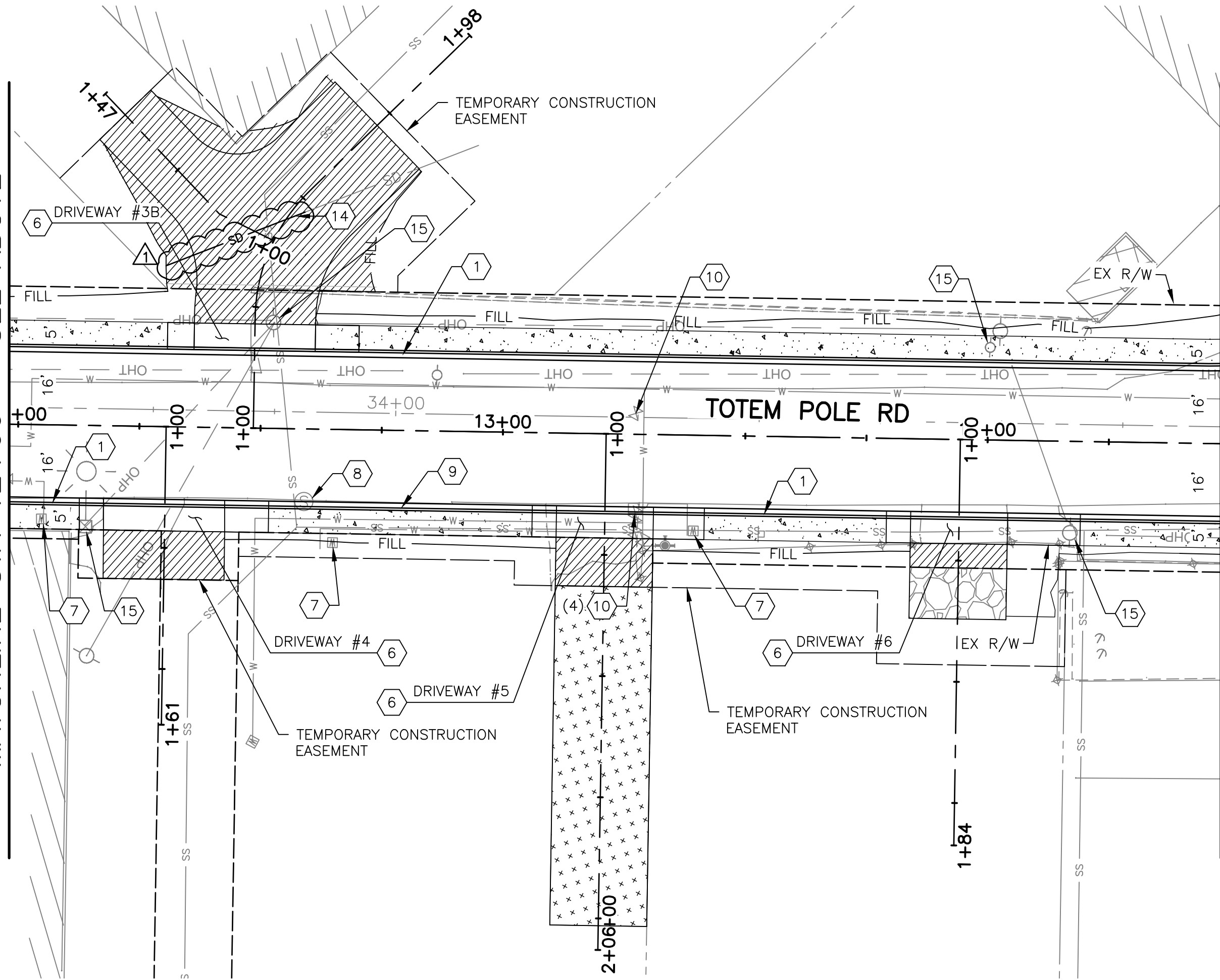
GENERAL NOTES

- SEE DWG. NO. WP1 FOR WALL PLAN AND PROFILE INFORMATION.
- SEE DWG. NO. CR1-CR3 FOR CURB RETURN AND CURB RAMP INFORMATION.
- SEE DWG. NO. DW1-DW4 FOR DRIVEWAY INFORMATION.
- SEE DWG. NO. LS1-LS2 FOR PROPERTY RESTORATION INFORMATION.



MATCHLINE STA 12+00 - SEE ABOVE

MATCHLINE STA 14+50 - SEE DWG. NO. PV3



PERTEET
123 OHME GARDEN ROAD, SUITE 8
WENATCHEE, WA 98801
800.615.9900



Know what's below.
Call before you dig.



12-18-25

Drawn By
N. EATON
Designed By
M. WARNER
Checked By
J. LEE
Approved By
J. SAUGEN

Date
11/2025
11/2025
11/2025
11/2025

CRP
#650

Project Number
20220011

CHELAN COUNTY
TOTEM POLE ROAD PHASE 1

ROADWAY PLAN

Drawing No.

PV2

Sheet No.

12

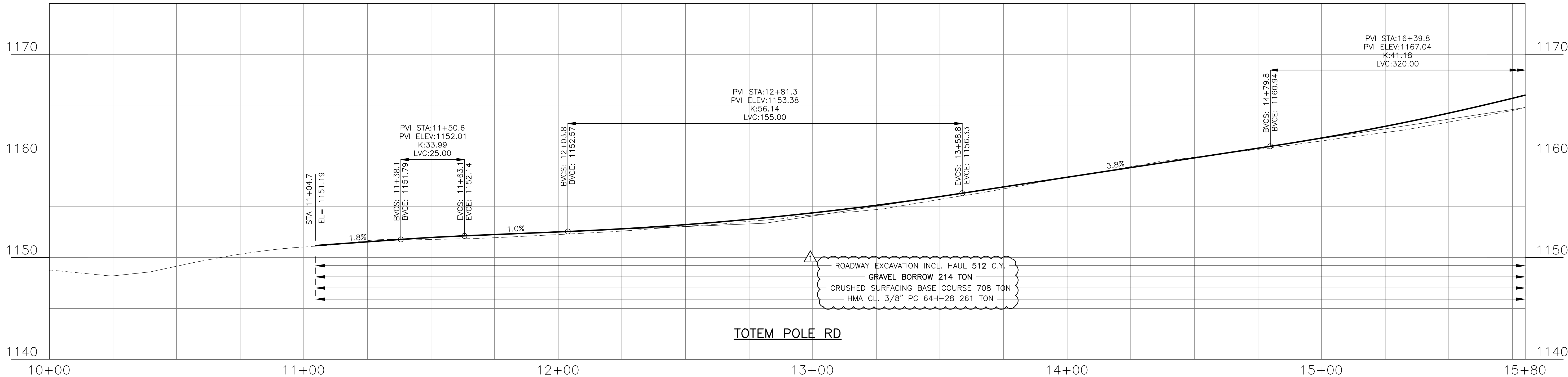
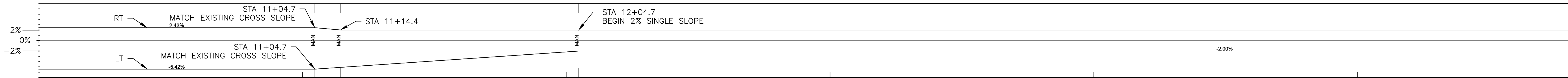
50
of Total

No.	Date
1	12/18/25

ADDENDUM #1

JS JS
By Appr.

SUPERELEVATION DIAGRAM

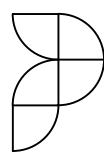
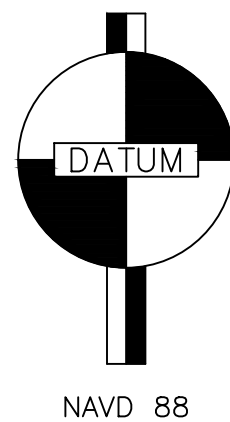
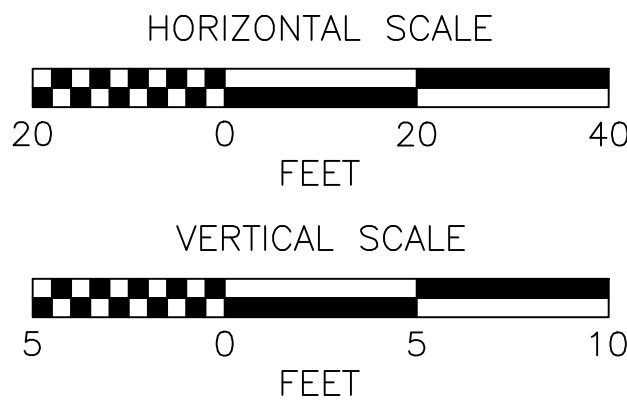


EX C EL	1148.7	1148.2	1149.2	1150.3	1151.0	1151.7	1151.8	1152.0	1152.3	1152.6	1153.1	1153.6	1154.2	1154.7	1155.7	1156.8	1157.9	1158.9	1159.9	1160.6	1161.5	1162.3	1163.3	1164.5
PROP C EL						1151.55	1151.98	1152.27	1152.53	1152.83	1153.24	1153.77	1154.40	1155.15	1156.00	1156.95	1157.90	1158.86	1159.81	1160.76	1161.76	1162.91	1164.21	1165.67

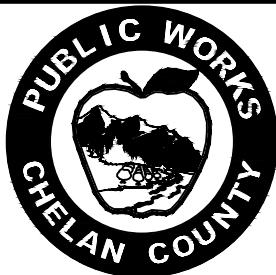
GENERAL NOTE:
QUANTITIES SHOWN ON THIS SHEET ARE FOR TOTEM POLE ROAD MAINLINE ONLY AND DO NOT REFLECT SIDE STREETS, DRIVEWAYS, OR RETAINING WALL VOLUMES.

PROFILE LEGEND:

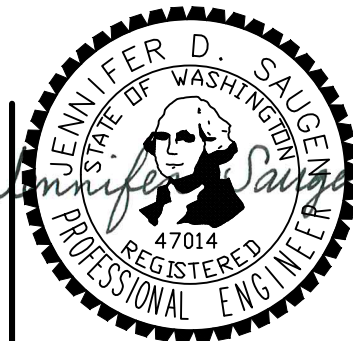
----- EXIST GROUND
———— PROPOSED GRADE



PERTEET
123 OHME GARDEN ROAD, SUITE 8
WENATCHEE, WA 98801
800.615.9900



Know what's below.
Call before you dig.



Drawn By: N. EATON
Designed By: M. WARNER
Checked By: J. LEE
Approved By: J. SAUGEN
Date: 11/2025
11/2025
11/2025
11/2025

CRP
#650

Project Number
20220011

CHELAN COUNTY
TOTEM POLE ROAD PHASE 1

ROADWAY PROFILE

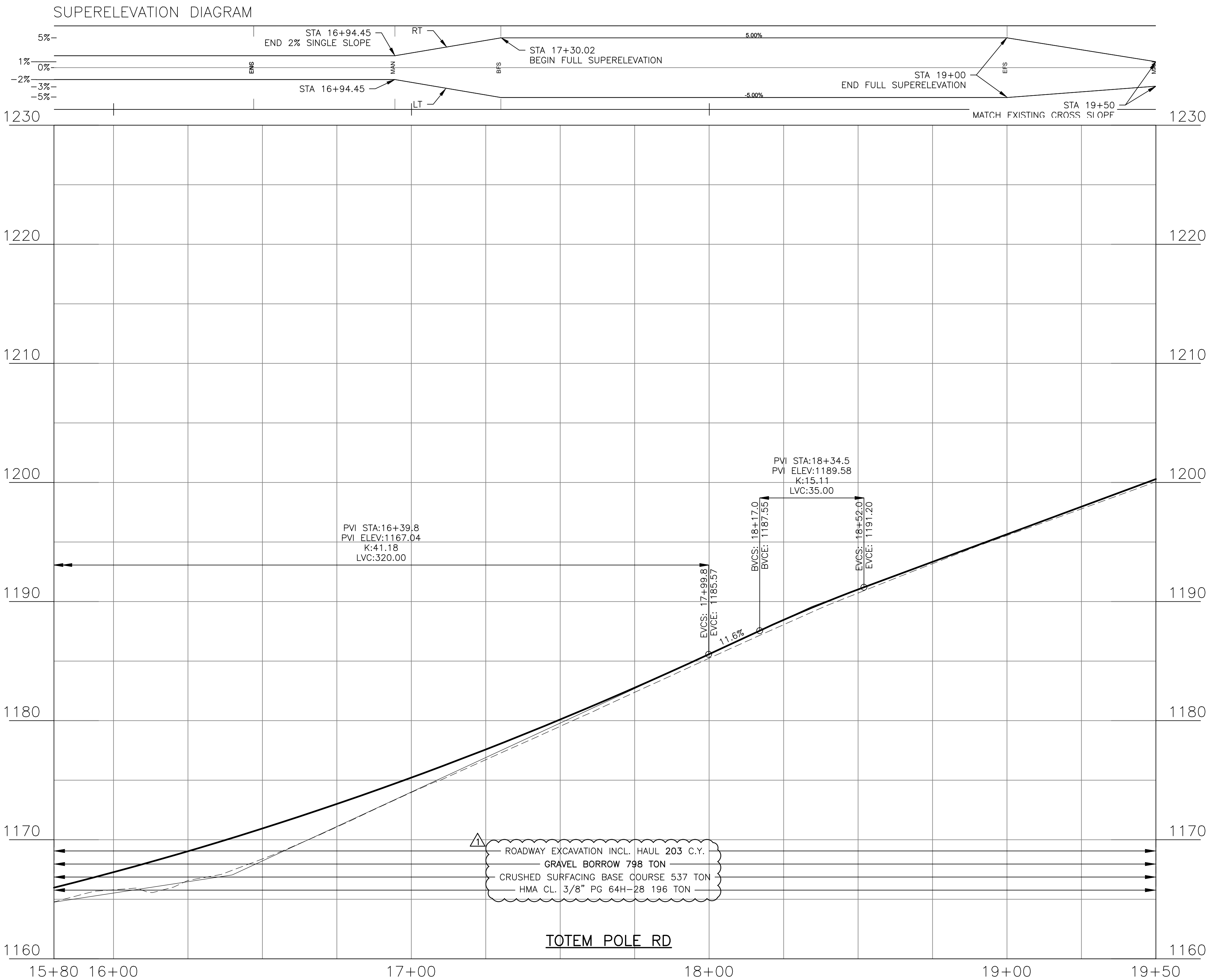
Drawing No.

PR1

Sheet No.

14

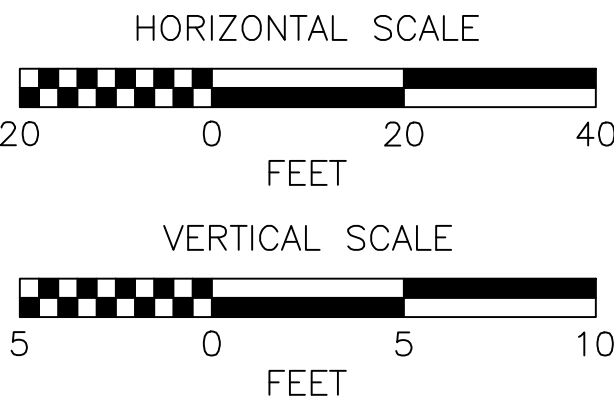
50
of Total



△ **GENERAL NOTE:**
QUANTITIES SHOWN ON THIS SHEET ARE FOR TOTEM POLE ROAD
MAINLINE ONLY AND DO NOT REFLECT SIDE STREETS,
DRIVEWAYS, OR RETAINING WALL VOLUMES.

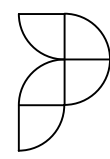
PROFILE LEGEND:

----- EXIST GROUND
———— PROPOSED GRADE

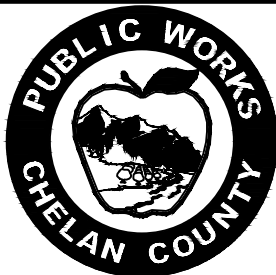


NAVD 88

EX ∇ EL	1164.8	1165.8	1166.6	1168.4	1171.1	1174.0	1176.7	1179.5	1182.4	1185.2	1188.1	1190.7	1193.2	1195.5	1197.8	1200.1
PROP ∇ EL	1165.98	1167.27	1169.03	1170.94	1173.00	1175.22	1177.58	1180.10	1182.77	1185.59	1188.46	1191.02	1193.33	1195.65	1197.97	1200.28



PERTEET
123 OHME GARDEN ROAD, SUITE 8
WENATCHEE, WA 98801
800.615.9900



Know what's below.
Call before you dig.



Drawn By
N. EATON
Designed By
M. WARNER
Checked By
J. LEE
Approved By
J. SAUGEN

Date
11/2025
11/2025
11/2025
11/2025

**CRP
#650**

Project Number
20220011

CHELAN COUNTY
TOTEM POLE ROAD PHASE 1
ROADWAY PROFILE

Drawing No.

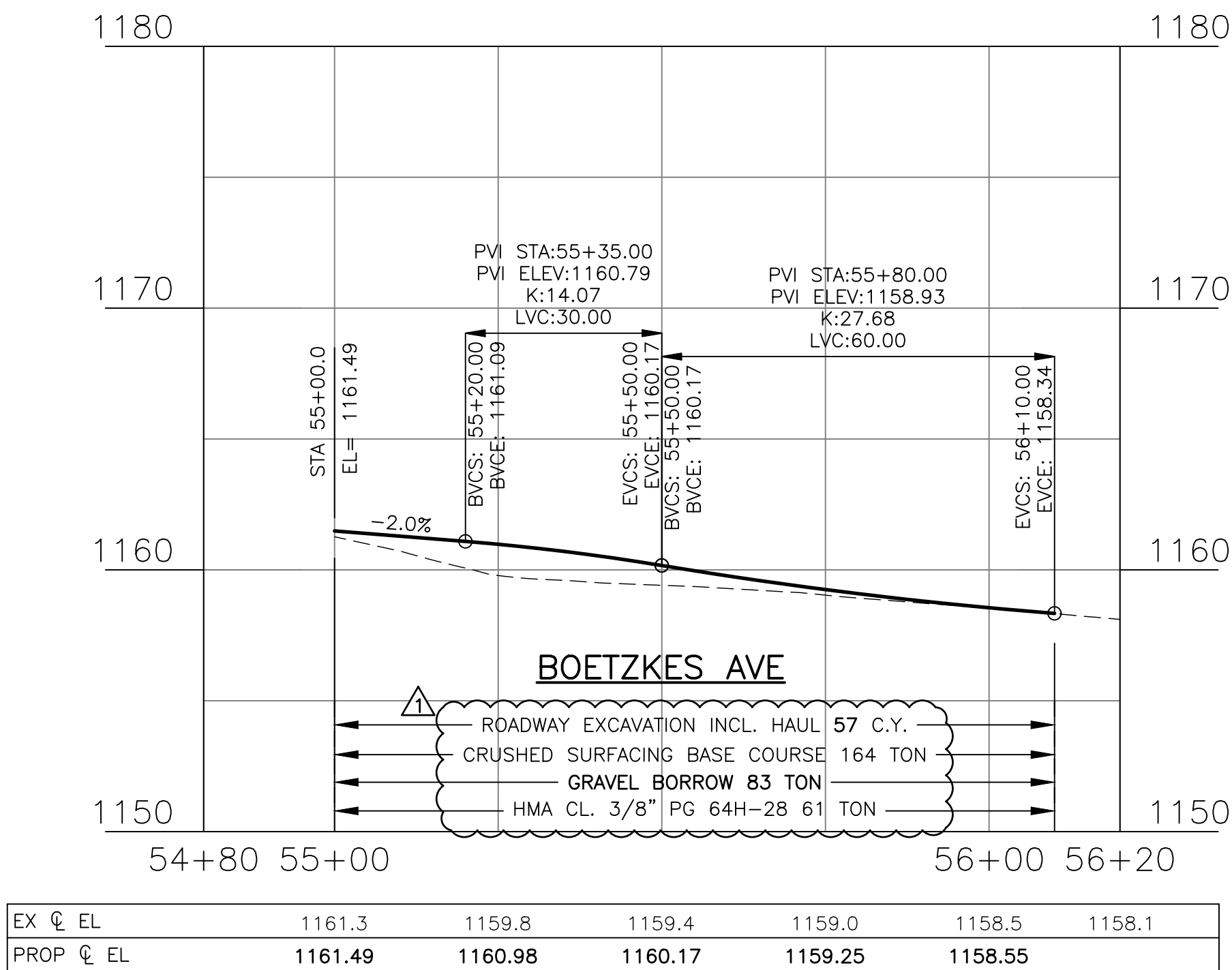
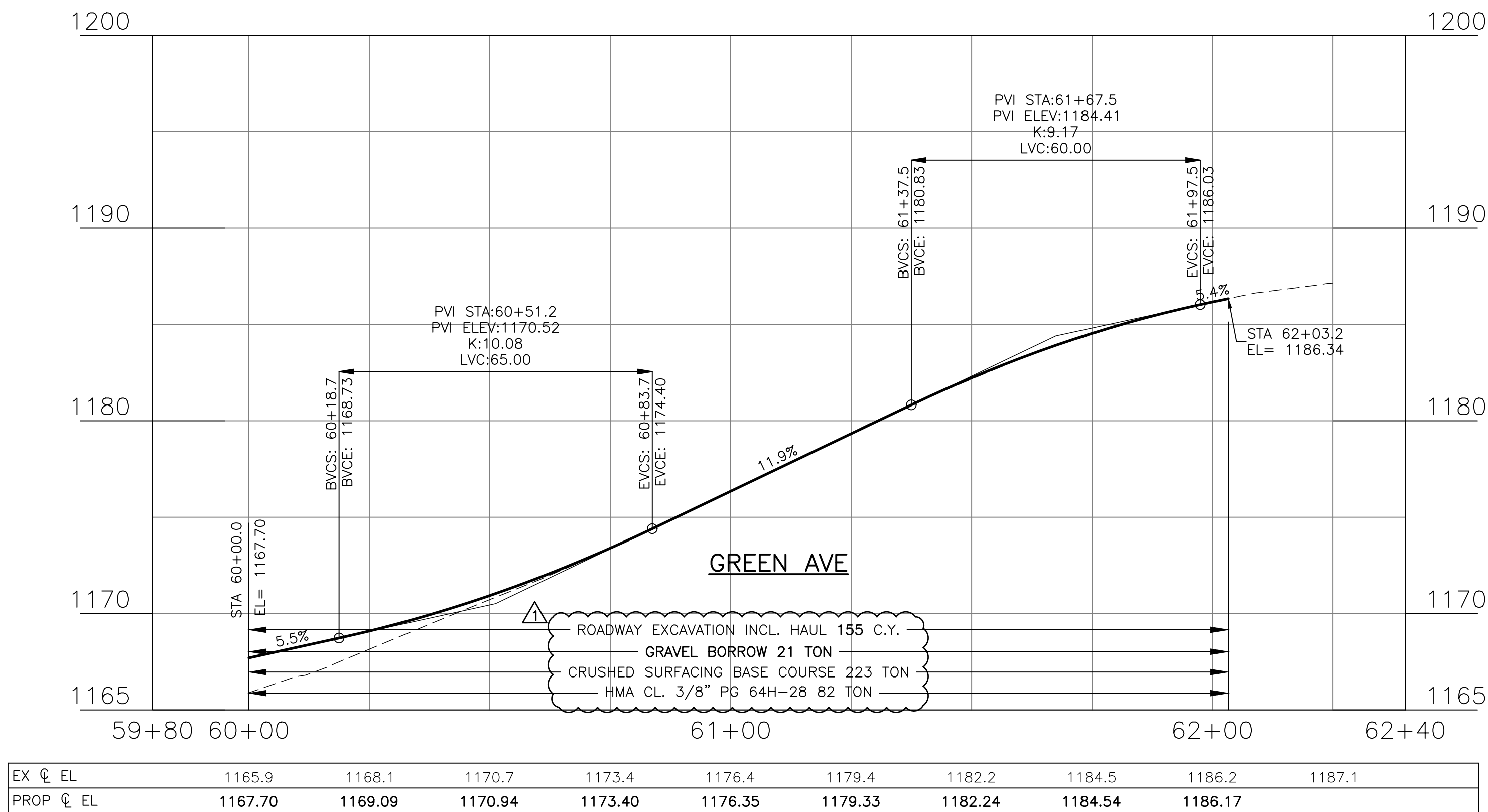
PR2

Sheet No.

15

50
of Total

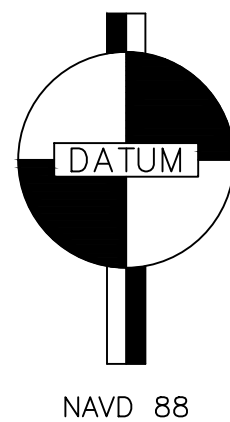
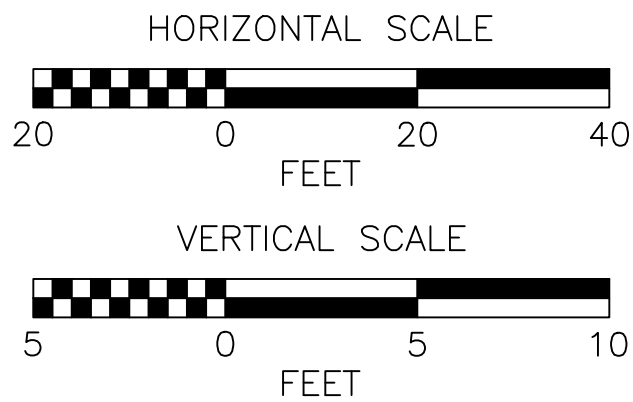
No.	Date	Revision	By	Appr.
1	12/18/25	ADDENDUM #1	JS	JS



GENERAL NOTE:
QUANTITIES SHOWN ON THIS SHEET ARE FOR SIDE
STREETS ONLY AND DO NOT REFLECT TOTEM POLE ROAD,
DRIVEWAYS, OR RETAINING WALL VOLUMES.

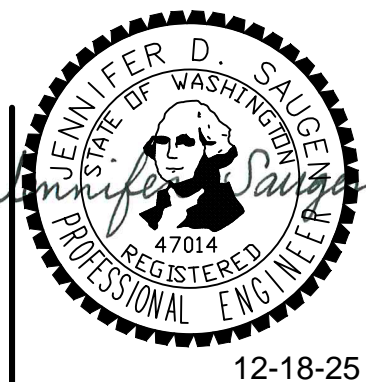
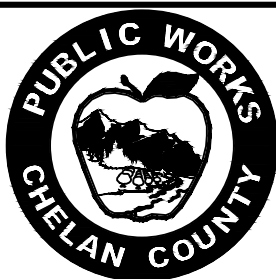
PROFILE LEGEND:

----- EXIST GROUND
————— PROPOSED GRADE



NAVD 88

PERTEET
123 OHME GARDEN ROAD, SUITE 8
WENATCHEE, WA 98801
800.615.9900



Drawn By N. EATON
Designed By M. WARNER
Checked By J. LEE
Approved By J. SAUGEN

Date 11/2025
11/2025
11/2025
11/2025

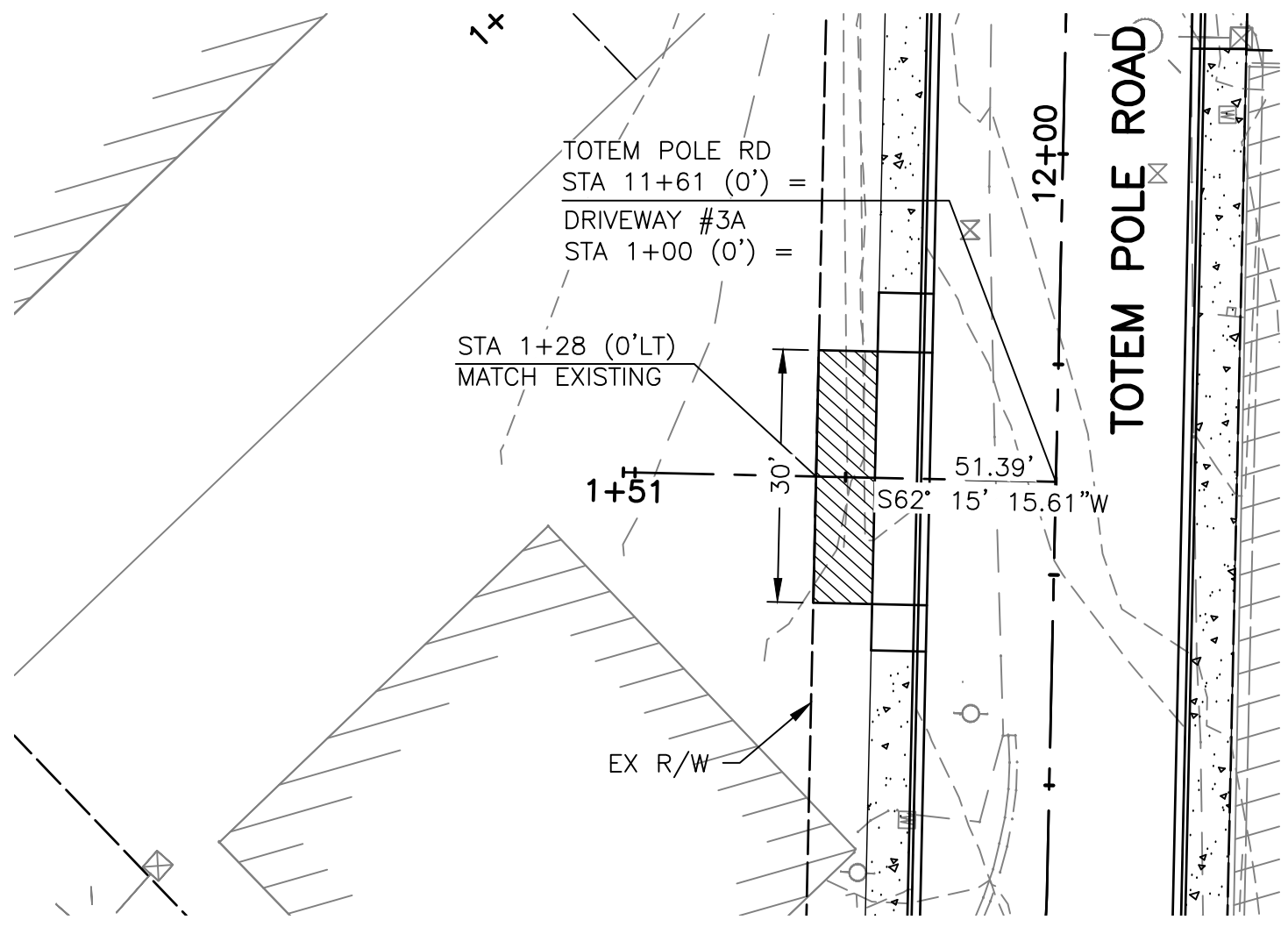
CRP
#650

Project Number
20220011

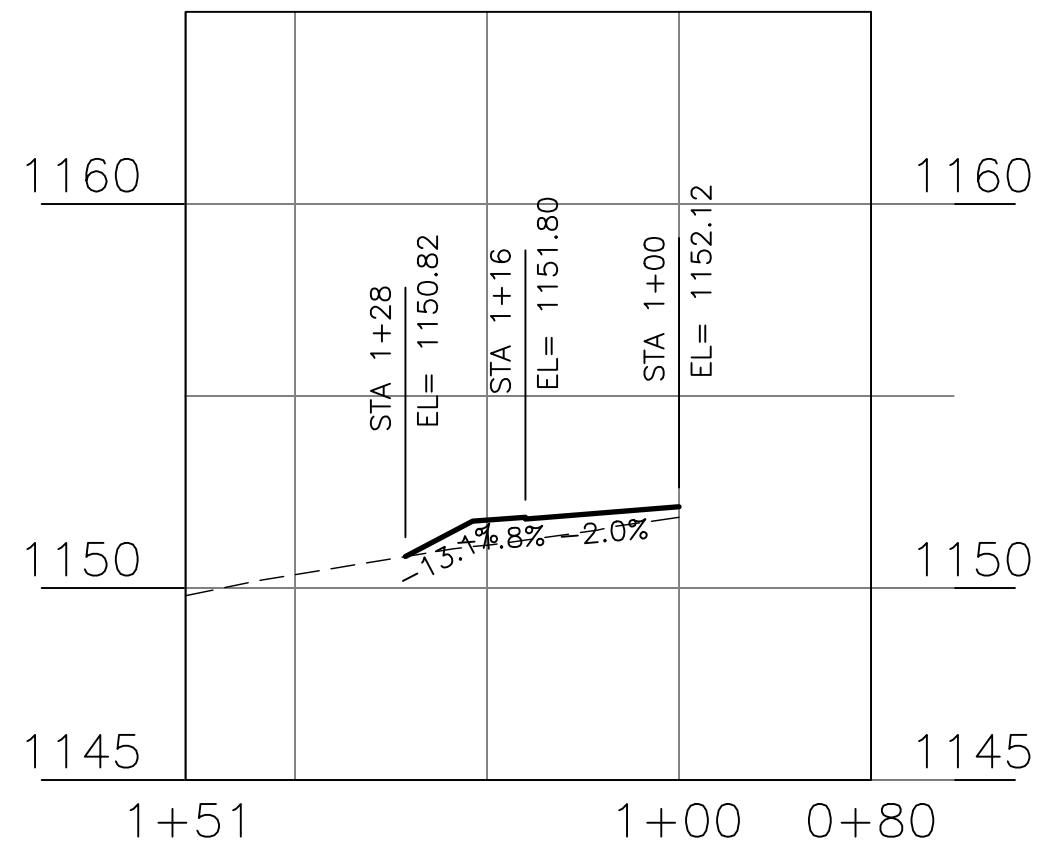
CHELAN COUNTY
TOTEM POLE ROAD PHASE 1
ROADWAY PROFILE

Drawing No.
PR3
Sheet No.
16
50
of Total

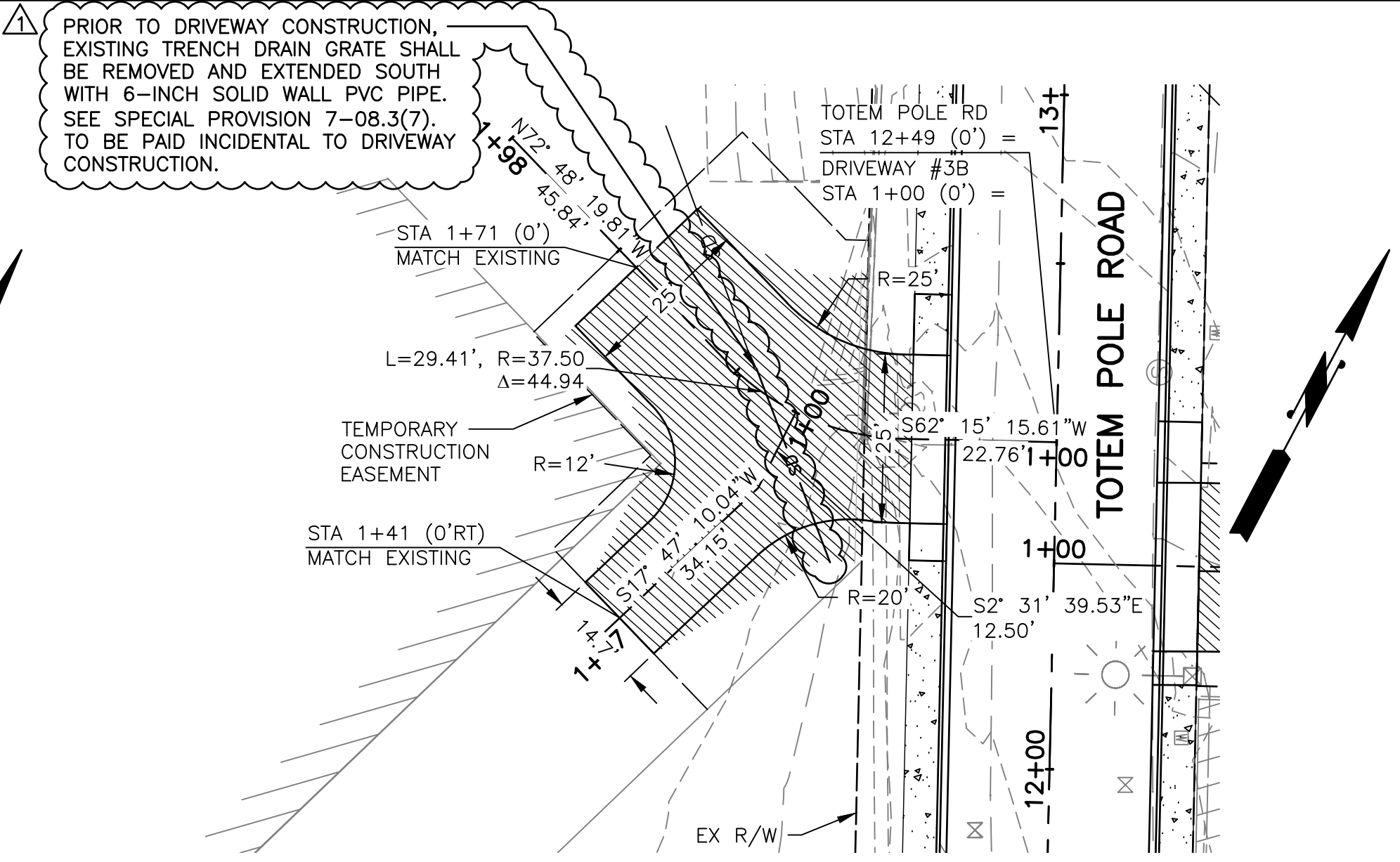
No.	Date	Revision	By	Appr.
1	12/18/25	ADDENDUM #1	JS	JS



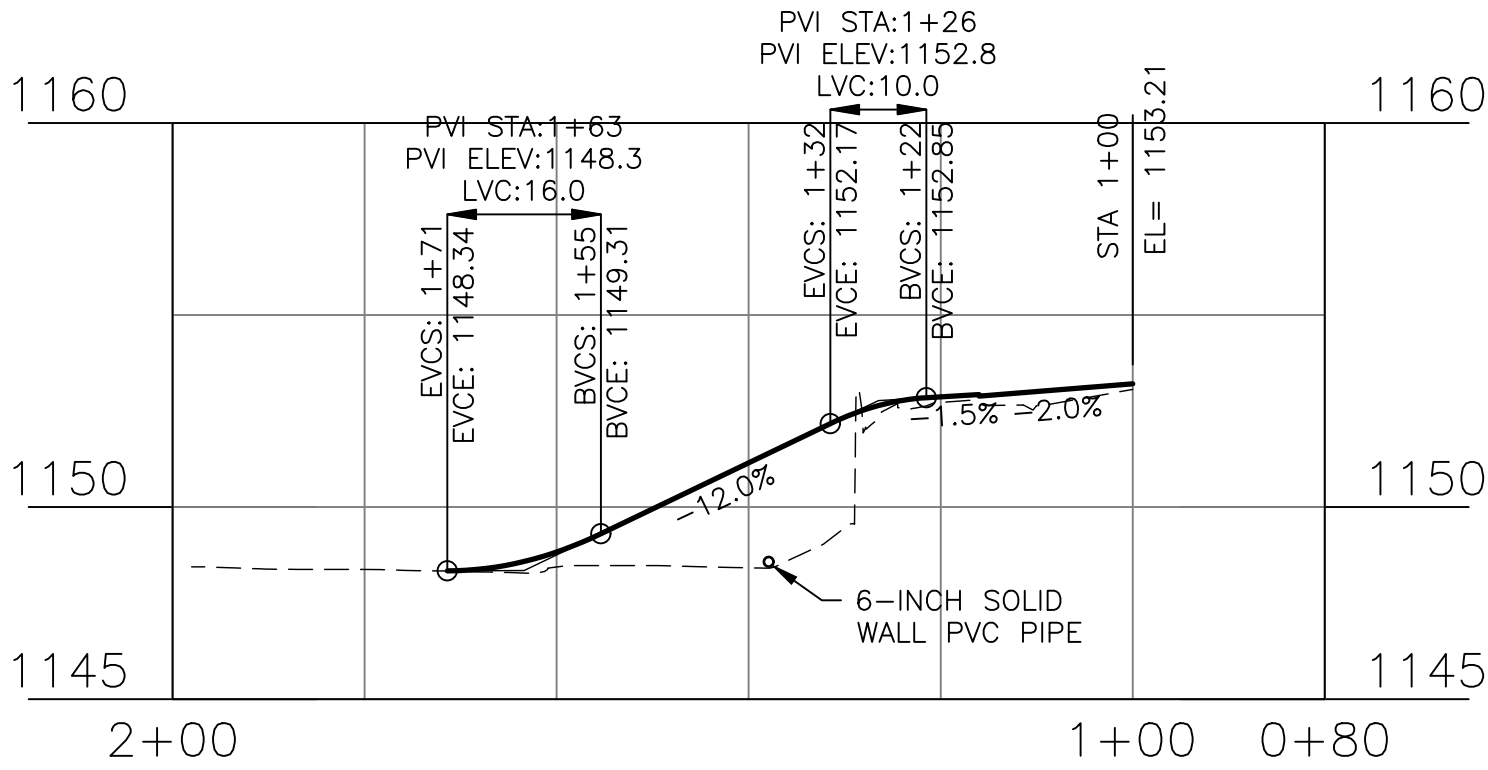
DRIVEWAY #3A STA 11+61 LT PLAN VIEW



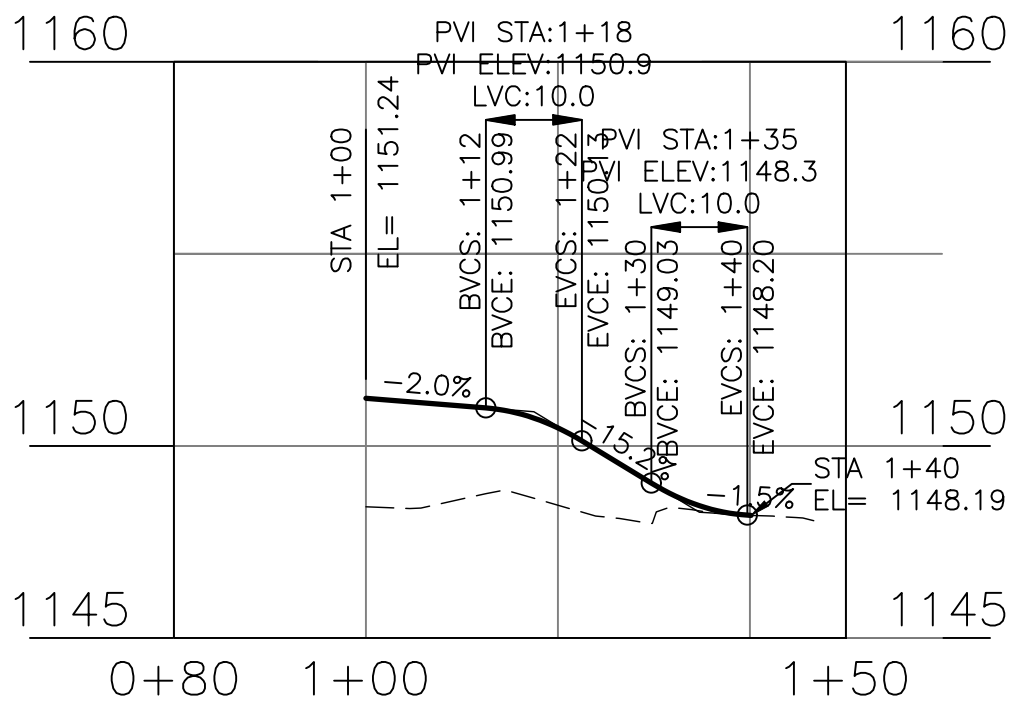
DRIVEWAY #3A STA 11+61 LT PROFILE



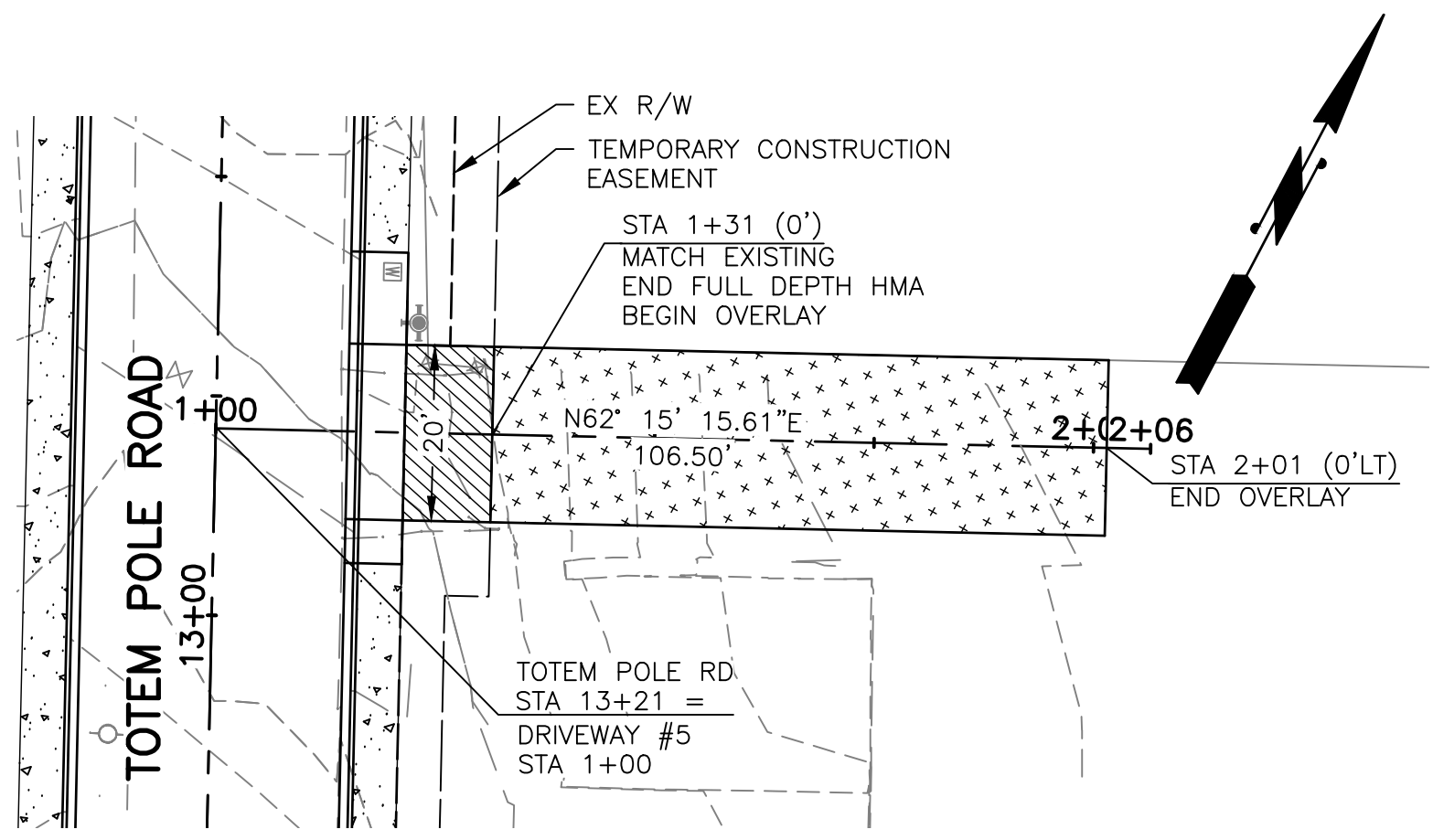
DRIVEWAY #3B STA 12+19 LT PLAN VIEW



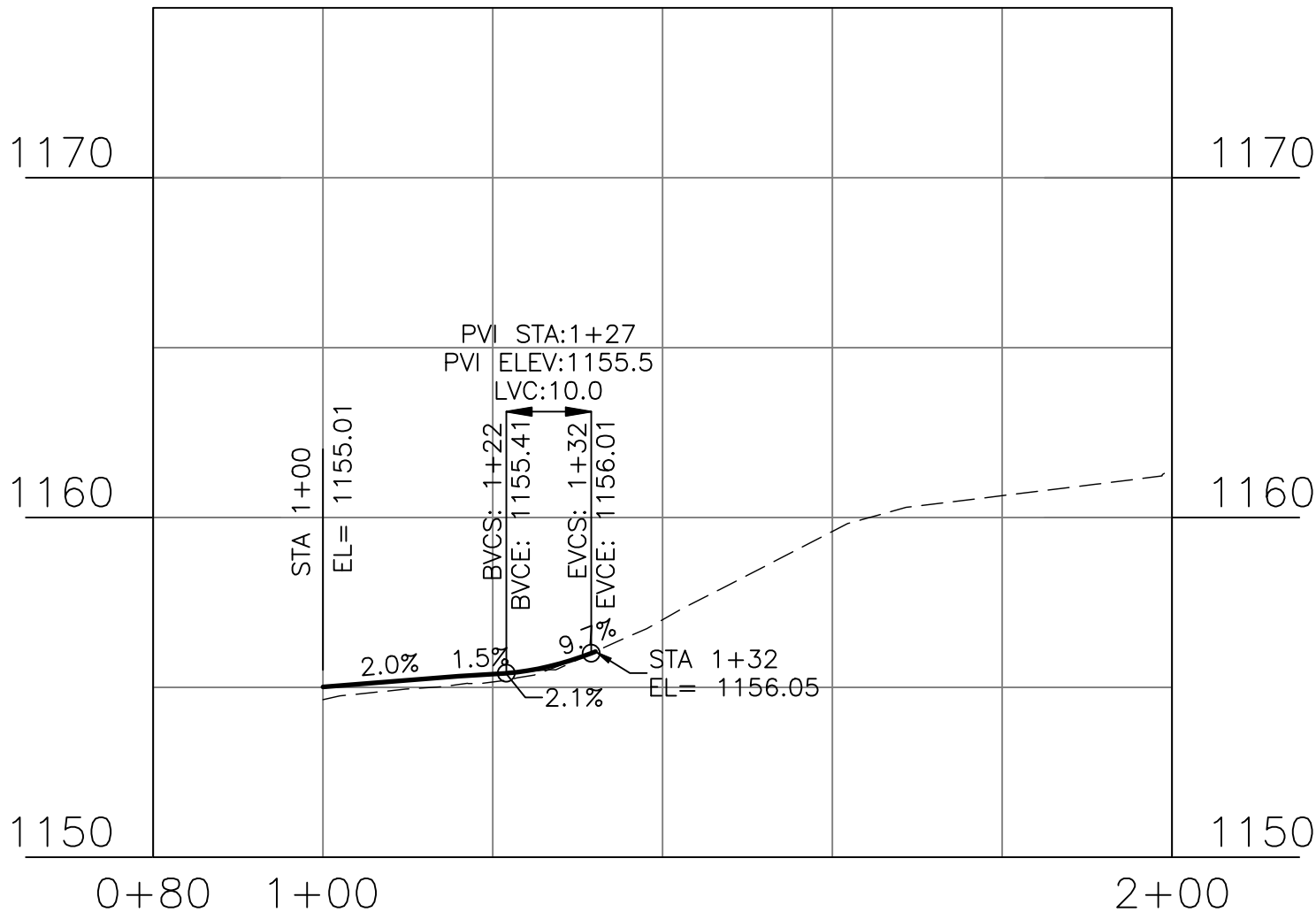
DRIVEWAY #3B SOUTH STA 12+19 LT PROFILE



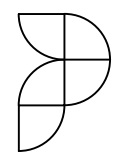
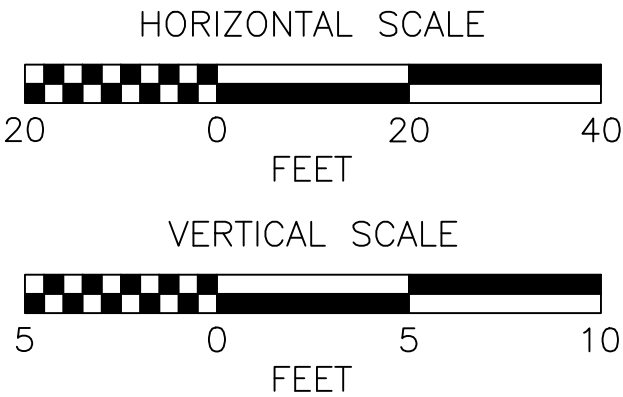
DRIVEWAY #3B WEST STA 12+19 LT PROFILE



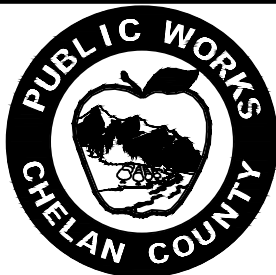
DRIVEWAY #5 STA 13+21 RT PLAN VIEW



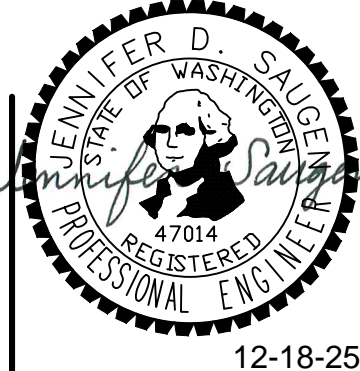
DRIVEWAY #5 STA 13+21 RT PROFILE



PERTEET
123 OHME GARDEN ROAD, SUITE 8
WENATCHEE, WA 98801
800.615.9900



Know what's below.
Call before you dig.



Drawn By
N. EATON
Designed By
M. WARNER
Checked By
J. LEE
Approved By
J. SAUGEN

Date
11/2025
11/2025
11/2025
11/2025

CRP
#650

Project Number
20220011

CHELAN COUNTY
TOTEM POLE ROAD PHASE 1

DRIVEWAY PLAN AND PROFILES

Drawing No.
DW2
Sheet No.
18
50
of Total

1	12/18/25	ADDENDUM #1	JS	JS	
No.	Date	Revision	By	Appr.	

Dec 18, 2025 - 2:05pm neaton X:\Chelan County\Projects\20220011 - Totem Pole Rd. Prelim Engineering\CADD\02 - Plan Sheets\Totem Pole Rd SOUTH\20220011-CH1-SD.dwg Layout Name: CH1

MATCHLINE STA 109+50
- SEE DWG. NO. CH1

SEC. 35, T. 28 N, R. 21 E, W.M.

FEDERAL AID NO. STPUS-7006(007)

CHANNELIZATION NOTES:


- 1 INSTALL PAINTED YELLOW DOUBLE CENTERLINE PER WSDOT STD. PLAN M-20.10.
- 2 INSTALL PAINTED 6" WHITE WIDE LINE PER SPECIAL PROVISION 8-22.
- 3 INSTALL PAINTED YELLOW EDGE LINE PER WSDOT STD. PLAN M-20.10.
- 4 INSTALL THERMOPLASTIC CROSSWALK PER CHELAN COUNTY STD. PLAN
- 5 INSTALL THERMOPLASTIC STOP LINE PER WSDOT STD. PLAN M-24.60.
- 6 NOT USED.

SIGN LEGEND

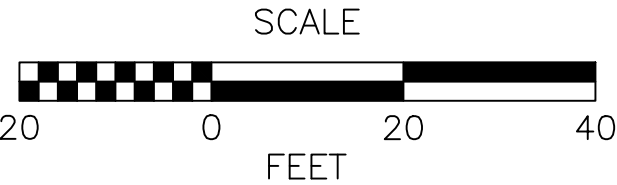
- X - NEW SIGN
- XXR - REMOVE EXISTING SIGN
- XX (NEW LOCATION) EXISTING SIGN ASSEMBLY TO BE RELOCATED
- XX (EXISTING LOCATION)
- - NEW SIGN
- - EXISTING SIGN

GENERAL NOTES:

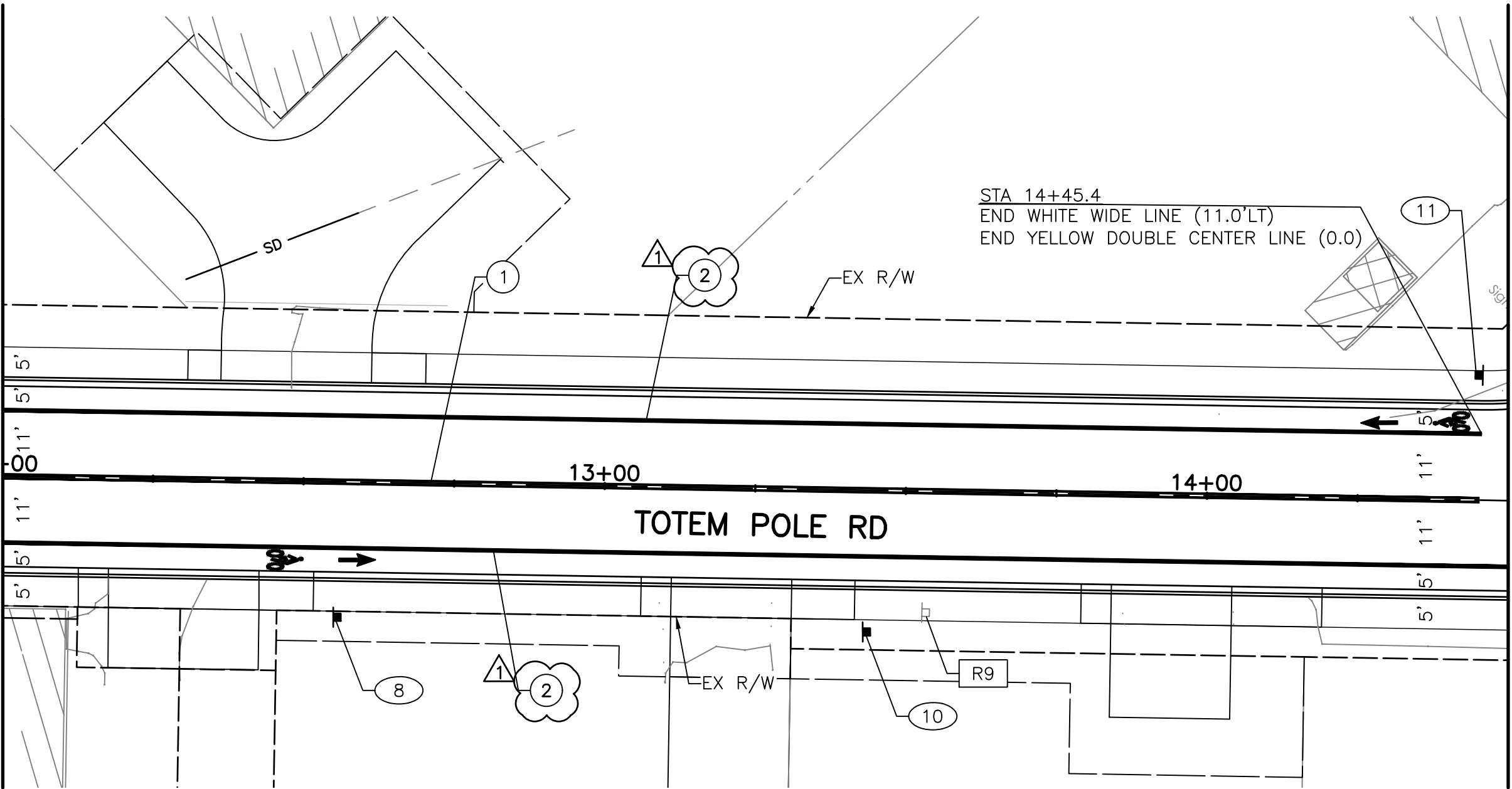
- 1. SEE DWG. NO. S1 FOR SIGN SCHEDULE.
- 2. LANE WIDTHS INCLUDE GUTTER WHERE EDGE LINE IS NOT USED.
- 3. ALL SIGNS NOT SHOWN AS REMOVED, RELOCATED, OR NEW SHALL BE MAINTAINED.
- 4. ALL SIGNS SHALL BE LOCATED PER WSDOT STD PLAN G-20.10.
- 5. ALL SIGN SUPPORTS SHALL BE INSTALLED WSDOT STD PLAN G-24.50.
- 6. PAINTED BIKE LANE SYMBOLS SHALL BE INSTALLED PER WSDOT STD PLAN M-9.50

CHANNELIZATION SYMBOL SCHEDULE		
SYMBOL	STATION	OFFSET
	10+28	79.30' RT
	12+62	13.0' RT
	14+27	13.0' LT

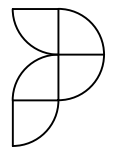
STATION VALUES ARE FROM BASE OF SYMBOL.
CENTER EACH SYMBOL IN LANE.



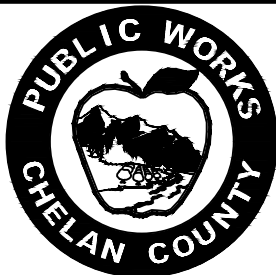
MATCHLINE STA 12+00
- SEE ABOVE



MATCHLINE STA 14+50
- SEE DWG. NO. CH2



PERTEET
123 OHME GARDEN ROAD, SUITE 8
WENATCHEE, WA 98801
800.615.9900



Know what's below.
Call before you dig.



12-18-25

Drawn By N. EATON
Designed By M. WARNER
Checked By J. LEE
Approved By J. SAUGEN
Date 11/2025
11/2025
11/2025
11/2025

CRP
#650

Project Number
20220011

CHELAN COUNTY
TOTEM POLE ROAD PHASE 1
CHANNELIZATION/SIGNING PLAN

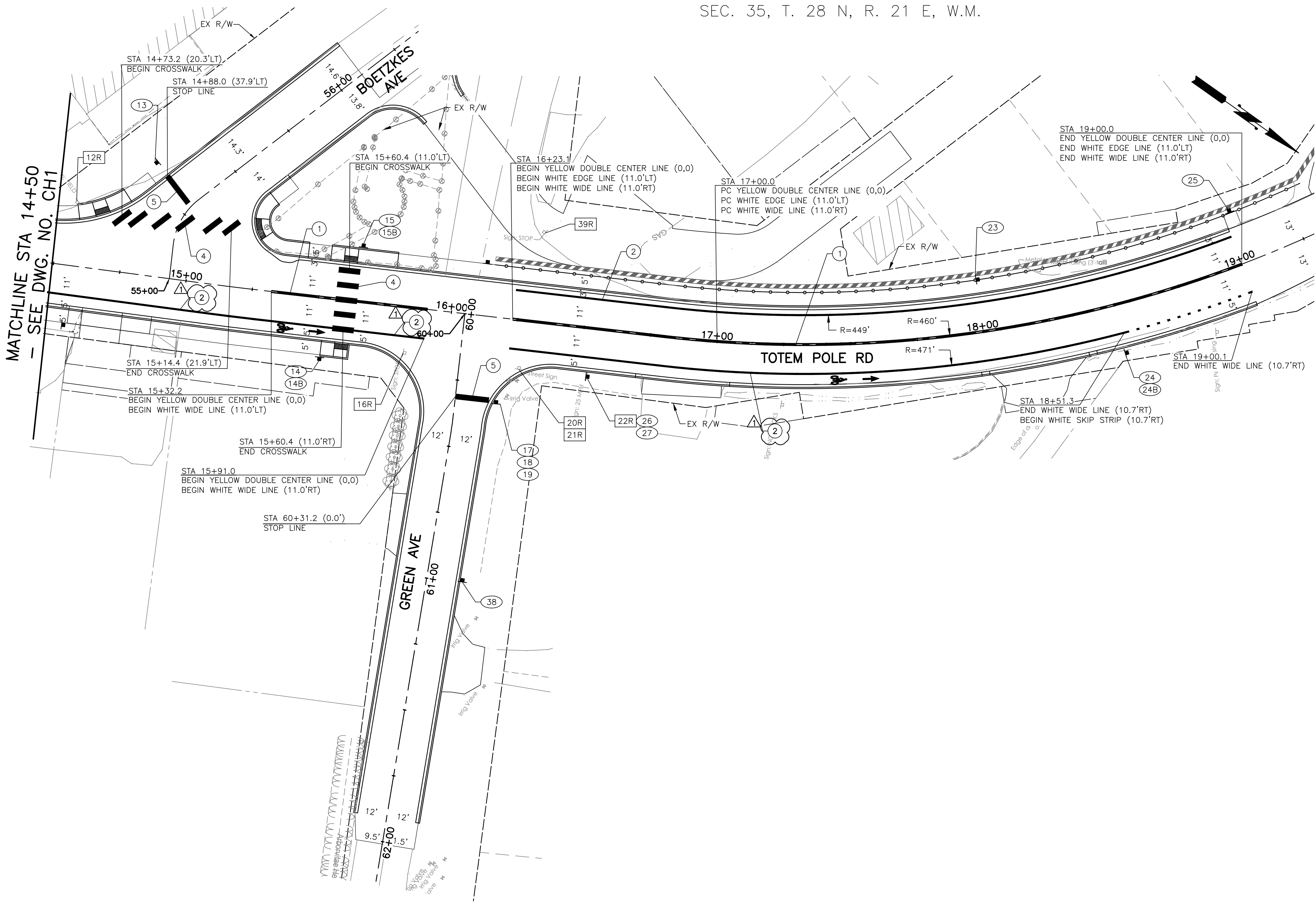
Drawing No.

CH1

Sheet No.

41

50
of Total



CHANNELIZATION NOTES:


1. INSTALL PAINTED YELLOW DOUBLE CENTERLINE PER WSDOT STD. PLAN M-20.10.
2. INSTALL PAINTED 6" WHITE WIDE LINE PER SPECIAL PROVISION 8-22.
3. INSTALL PAINTED YELLOW EDGE LINE PER WSDOT STD. PLAN M-20.10.
4. INSTALL THERMOPLASTIC CROSSWALK PER CHELAN COUNTY STD. PLAN.
5. INSTALL THERMOPLASTIC STOP LINE PER WSDOT STD. PLAN M-24.60.
6. NOT USED.

SIGN LEGEND

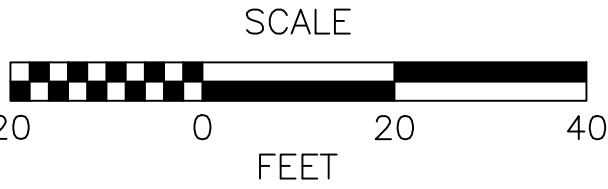
- (X) - NEW SIGN
- XXR - REMOVE EXISTING SIGN
- (NEW LOCATION) (EXISTING LOCATION) - EXISTING SIGN ASSEMBLY TO BE RELOCATED
- - NEW SIGN
- ▣ - EXISTING SIGN

GENERAL NOTES:

1. SEE DWG. NO. S1 FOR SIGN SCHEDULE.
2. LANE WIDTHS INCLUDE GUTTER WHERE EDGE LINE IS NOT USED.
3. ALL SIGNS NOT SHOWN AS REMOVED, RELOCATED, OR NEW SHALL BE MAINTAINED.
4. ALL SIGNS SHALL BE LOCATED PER WSDOT STD PLAN G-20.10.
5. ALL SIGN SUPPORTS SHALL BE INSTALLED WSDOT STD PLAN G-24.50.
6. PAINTED BIKE LANE SYMBOLS SHALL BE INSTALLED PER WSDOT STD PLAN M-9.50

CHANNELIZATION SYMBOL SCHEDULE		
SYMBOL	STATION	OFFSET
	15+54	13.0' RT
	17+60	13.0' RT

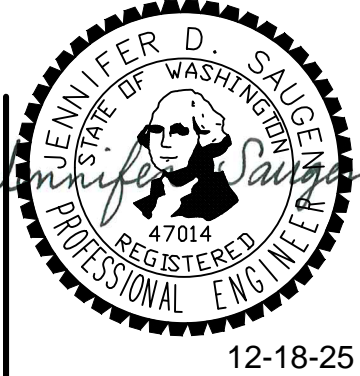
STATION VALUES ARE FROM BASE OF SYMBOL. CENTER EACH SYMBOL IN LANE.



Dec 18, 2025 - 2:05pm neaton X:\Chelan County\Projects\2022\20011 - Totem Pole Rd. Prelim Engineering\CADD\02 - Plan Sheets\Totem Pole Rd SOUTH\2022\20011-CH-SD.dwg Layout Name: CH2

No.	Date	Revision	By	Appr.
1	12/18/25	ADDENDUM #1	JS	JS

PERTEET
123 OHME GARDEN ROAD, SUITE 8
WENATCHEE, WA 98801
800.615.9900



Drawn By	Date
N. EATON	11/2025
Designed By	
M. WARNER	11/2025
Checked By	
J. LEE	11/2025
Approved By	
J. SAUGEN	11/2025

CRP #650
Project Number 20220011

CHELAN COUNTY TOTEM POLE ROAD PHASE 1		Drawing No. CH2
CHANNELIZATION/SIGNING PLAN		Sheet No. 42 50 of Total