



Chelan County Public Works Department

316 Washington Street, Suite 402
Wenatchee, Washington

December 29, 2025
Addendum No. 2
Page 1 of 2

Attention: All bidders and planholders

RE: CRP 650, Totem Pole Road Phase I Road Improvement Project

You are hereby notified of the following changes to the Contract Documents, Special Provisions, Standard Specifications, Plans and other documents comprising the contract documents for the above referenced project.

General Note

1. The bid opening date for Totem Pole Road Phase I has been extended one additional week to January 20, 2026.

Contract

1. Superseding Addendum 1, the first sentence of the Call For Bids shall be removed and replaced with the following:

Sealed bids will be received by the Board of Chelan County Commissioners at their office at 400 Douglas Street, Wenatchee, Washington 98801 until **9:30:00 A.M. on January 20, 2026.**

Contract Special Provisions

1. No changes

Contract Plans

1. Remove the following plan sheets and replace in their entirety with attached Addendum No. 2 Plan Sheets:

IL1, IL2, CH2, S1

Questions and Answers

1. Question: What is the project estimate range for construction bonding?

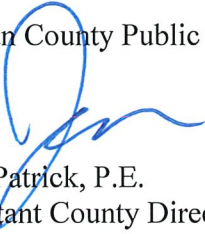
Answer: \$3.0M to \$3.2M

All bidders will be required to furnish the Board of Chelan County Commissioners with evidence of the receipt of this addendum by noting on the proposal sheet.

The new bid date for this project is January 20, 2026.

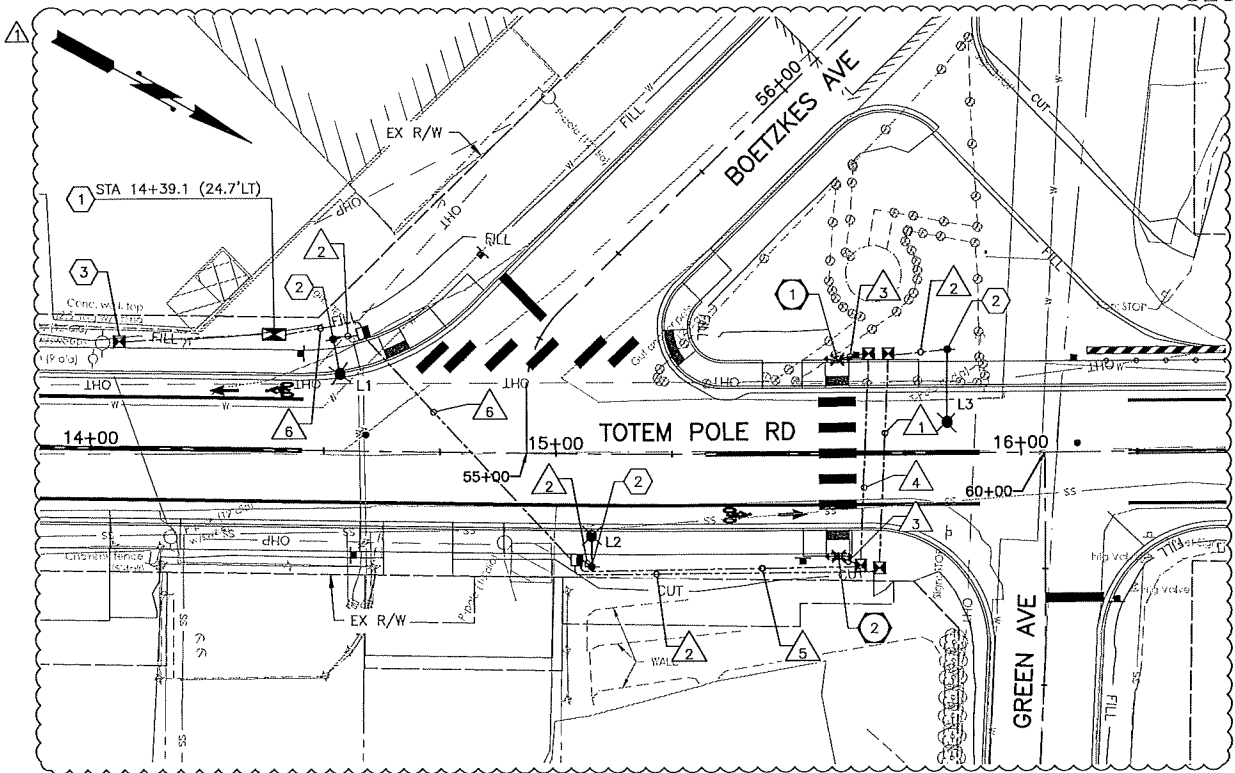
Addendum Number 2 is hereby incorporated in and made part of the contract documents, and its terms and conditions are fully binding on the plan holder and contractor when awarded and when formally executed.

Chelan County Public Works



Josh Patrick, P.E.
Assistant County Director

Attachment: Plan Sheets IL1, IL2, CH2, S1



GENERAL NOTES:

- ALL WORK SHALL BE DONE IN ACCORDANCE WITH 2025 WSDOT STANDARD PLANS & SPECIFICATIONS AND THE LATEST AMENDMENTS, APWA STANDARDS, CHELAN COUNTY DESIGN AND CONSTRUCTION STANDARDS, EXCEPT AS MODIFIED BY CONTRACT PLANS AND SPECIAL PROVISIONS.
- ALL ILLUMINATION CONDUIT WORK SHALL BE RIGID PVC SCHEDULE 40 EXCEPT WHERE IT CROSSES THE ROADWAY WHERE RIGID PVC SCHEDULE 80 SHALL BE USED, SEE SPECIAL PROVISIONS SECTION 8-20.3(5)B.
- ALL TYPE 1 AND 2 JUNCTION BOXES SHALL BE PER WSDOT STD PLAN J-40.10. TYPE 8 JUNCTION BOXES SHALL BE PER WSDOT STD PLAN J-40.30.
- JUNCTION BOXES SHALL BE KEPT OUT OF THE SIDEWALK UNLESS APPROVED BY THE ENGINEER OR INSTRUCTED ON THE PLANS. JUNCTION BOXES INSTALLED IN SIDEWALKS SHALL HAVE SLIP-RESISTANT LIDS PER SECTION 9-29.2 OF THE SPECIAL PROVISIONS.
- ILLUMINATION CONDUIT AND JUNCTION BOX LOCATIONS ARE SCHEMATIC AND SHOWN FOR REFERENCE TO EASE WITH INSTALLATION. FINAL LOCATIONS SHALL BE DETERMINED BY THE CONTRACTOR AND APPROVED BY THE ENGINEER IN THE FIELD.
- NUMBER OF CONDUIT BENDS BETWEEN PULL POINTS SHALL NOT BE MORE THAN THE EQUIVALENT OF FOUR QUARTER BENDS (360 DEGREE TOTAL). IF NUMBER OF BENDS EXCEEDS 360 DEGREES, THE CONTRACTOR SHALL INSTALL ADDITIONAL JUNCTION BOXES AS REQUIRED.

CONSTRUCTION NOTES:

- FURNISH AND INSTALL SERVICE CABINET TYPE B MODIFIED PER WSDOT STD PLAN J-10.20 ON WOOD POST PER WSDOT STD PLAN J-10.14.
- CONSTRUCT FOUNDATION PER WSDOT STD PLAN J-28.30. FURNISH AND INSTALL STREET LIGHT STANDARD WITH TYPE 1 (DAVIT) MAST ARM, CONDUIT, WIRING AND ALL ASSOCIATED EQUIPMENT PER WSDOT STD PLAN J-28.10, LUMINAIRE SCHEDULE, AND SPECIAL PROVISIONS.
- COUNTY TO CONFIRM PUD CONNECTION LOCATION PRIOR TO INSTALLATION. INSTALL WIRING, CONDUIT, AND JUNCTION BOX FOR SERVICE CONNECTION. CONTRACTOR TO COORDIANTE WITH CHELAN COUNTY PUD FOR SERVICE CONNECTION STANDARDS.

SIGNAL POLE NOTES:

- CONSTRUCT FOUNDATION PER WSDOT STD PLAN J-20.15, AND RRFB POLE SCHEDULE. INSTALL ACCESSIBLE (AID) PUSHBUTTON, BEACON, WIRELESS TRANSMITTER/RADIO, AND CONTROLLER PER MANUFACTURER INSTALLATION GUIDE.

ILLUMINATION LEGEND:

- ROADWAY LUMINAIRE
- JUNCTION BOX TYPE 1
- JUNCTION BOX TYPE 2
- JUNCTION BOX TYPE 8
- SERVICE CABINET
- RRFB INDICATOR AND SIGN
- CONDUIT
- CONDUIT WIRE NOTE
- CONSTRUCTION NOTE

LUMINAIRE SCHEDULE-BOETZKE SERVICE

LUMINAIRE #	LOCATION		FIXTURE TYPE	LUMINAIRE ARM	MOUNTING HEIGHT	COMMENTS
	STATION	OFFSET				
L1	14+51.8	24.0' LT	GE 250W EQUIV.	6'	35'	
L2	15+08.0	24.0' RT	GE 250W EQUIV.	6'	35'	
L3	15+84.21	22.0' LT	GE 250W EQUIV.	14'	35'	

POLE PEDESTAL SCHEDULE

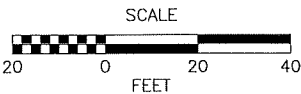
POLE NUMBER	STATION/LOCATION AND OFFSET	FOUNDATION TYPE		DIRECTION ARROW	VOICE MESSAGE
		TYPE	WSDOT STANDARD PLAN		
1	15+60.5, 21.0' LT	CURB	WSDOT STD PLAN J-20.15	LEFT	YELLOW LIGHTS ARE FLASHING
2	15+60.6, 22.1' RT	CURB	WSDOT STD PLAN J-20.15	LEFT	YELLOW LIGHTS ARE FLASHING

ILLUMINATION WIRING SCHEDULE

#	CONDUIT SIZE	CONDUCTORS	BARE GROUND	CIRCUIT	NOTES
1	2"	4-#8	1-#8	A	SPARE
2	2"	2-#8	1-#8	A	
3	2"	2-#14, 1-4C	1-#8	B	SPARE
4	2"	2-#14, 1-4C	1-#8	B	
5	2"	2-#14	1-#8	B	SPARE
6	2"	2-#8	1-#8	A	
	2"	2-#14	1-#8	B	
	2"				SPARE

BREAKER SCHEDULE

CIRCUIT	DESCRIPTION	FUSE	VOLTAGE	LOAD (KVA)
	MAIN	200		
A	ILLUMINATION	20	240	1.26
B	RRFB	20 AMP	120	0.35
C	SPARE	20 AMP		0.00
D	GFCI	20 AMP	120	0.19
E	PHOTOCELL	15 AMP	120	0.15
F	RECEPTACLE	20 AMP	120	0.19
			PEAK	2.13
			CONTINUOUS	1.260



No.	Date	Revision	By	Appr.
1	12/22/25	ADDENDA #2	ZM	JS

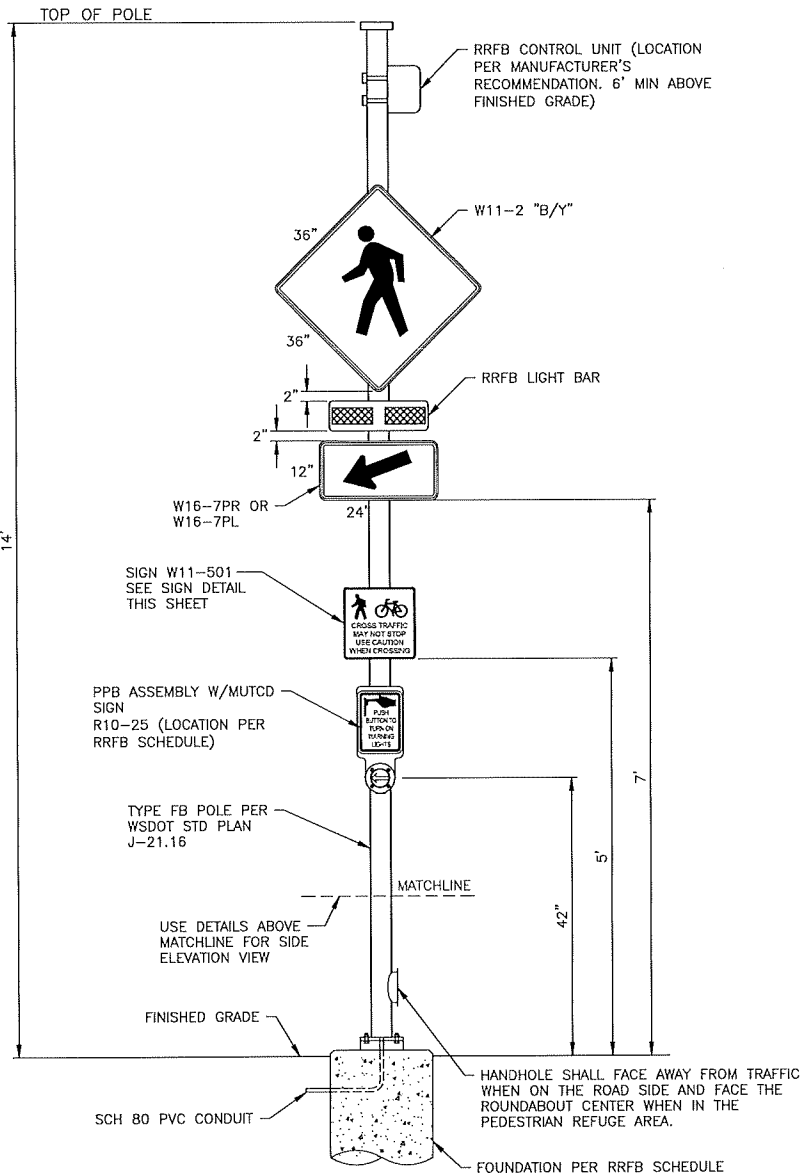
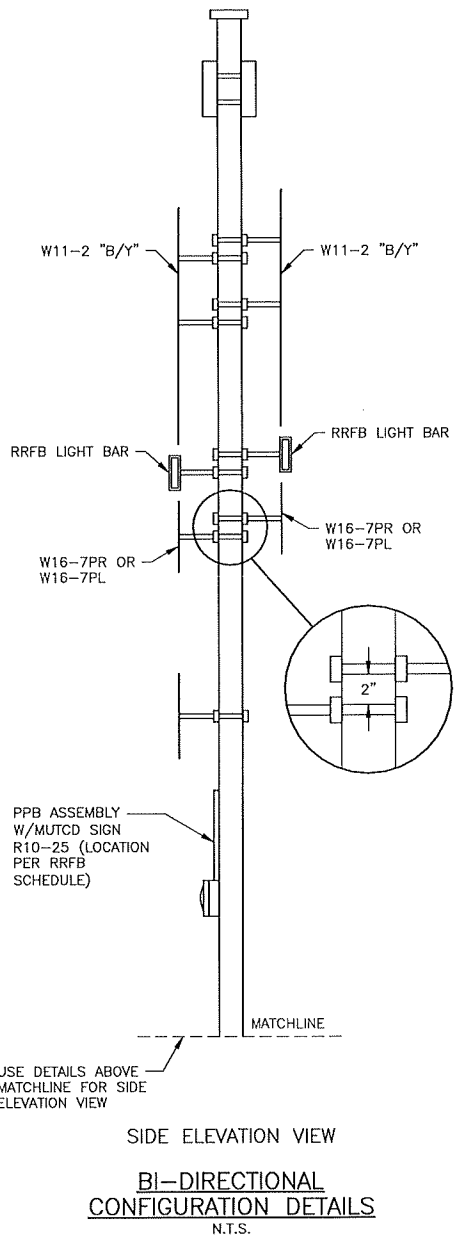
GENERAL NOTES:

1. SEE WSDOT STD PLAN J-21.10 FOR SIGNAL STANDARD FOUNDATION WITH FLAT FOUNDATION AND CURB FOUNDATION DETAILS.
2. SEE WSDOT STD PLAN J-21.16 FOR SIGNAL STANDARD DETAILS NOT SHOWN.
3. SEE WSDOT STD PLAN J-21.17 FOR WIRING DETAILS NOT SHOWN.
4. CONTROL CABINET ENCLOSURE SHALL BE SIZED BY THE RFB MANUFACTURER.
5. SEE WSDOT STD PLAN G-30.10 FOR SIGN INSTALLATION ON SIGNAL STANDARD DETAILS.
6. TERMINATE RFB CONNECTIONS PER MANUFACTURER'S RECOMMENDATION.
7. BEACON ASSEMBLY MAY BE MOUNTED ON THE TOP OF THE POLE OR ON THE SIDE OF THE POLE.
8. RRFB DISPLAYS SHALL BE LED TYPE MEETING THE INTENSITY REQUIREMENTS OF SAE J595 FOR CLASS 1 YELLOW, BUT SHALL NOT EXCEED 1000 CANDELAS DURING DAYLIGHT AND 500 CANDELAS AFTER DARK.
9. PEDESTRIAN PUSHBUTTON AND SIGN ASSEMBLY MAY BE SEPARATE PARTS.
10. PEDESTRIAN PUSHBUTTONS SHALL BE ANGLED PERPENDICULAR TO THE EDGE OF THE ADJACENT SIDEWALK OR CURB RAMP.



W11-501
(12" x 12")

PEDESTRIAN SYMBOL HEIGHT - 4" (IN)
BICYCLE SYMBOL HEIGHT - 3" (IN)
LETTERS - 1" C
LEGEND - BLACK
BACKGROUND - YELLOW



*NOTE: INSTALL SIGNS AND LIGHT BARS PER BI-DIRECTIONAL CONFIGURATION DETAIL.

Dec 23, 2025 - 4:26pm reaton X:\Chelan County\Projects\2022\2021 - Totem Pole Rd. Prelim Engineering\CADD\02 - Plan Sheets\Totem Pole Rd SOUTH\2022\2021-IL2.dwg Layout Name: IL2

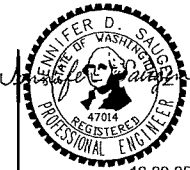
No.	Date	Revision	By	Appr.
1	12/22/25	ADDENDA #2	ZM	JS



PERITEET
123 OHME GARDEN ROAD, SUITE B
WENATCHEE, WA 98801
800.615.9900



Know what's below.
Call before you dig.



Drawn By
N. EATON
Designed By
M. WARNER
Checked By
J. LEE
Approved By
J. SAUGEN

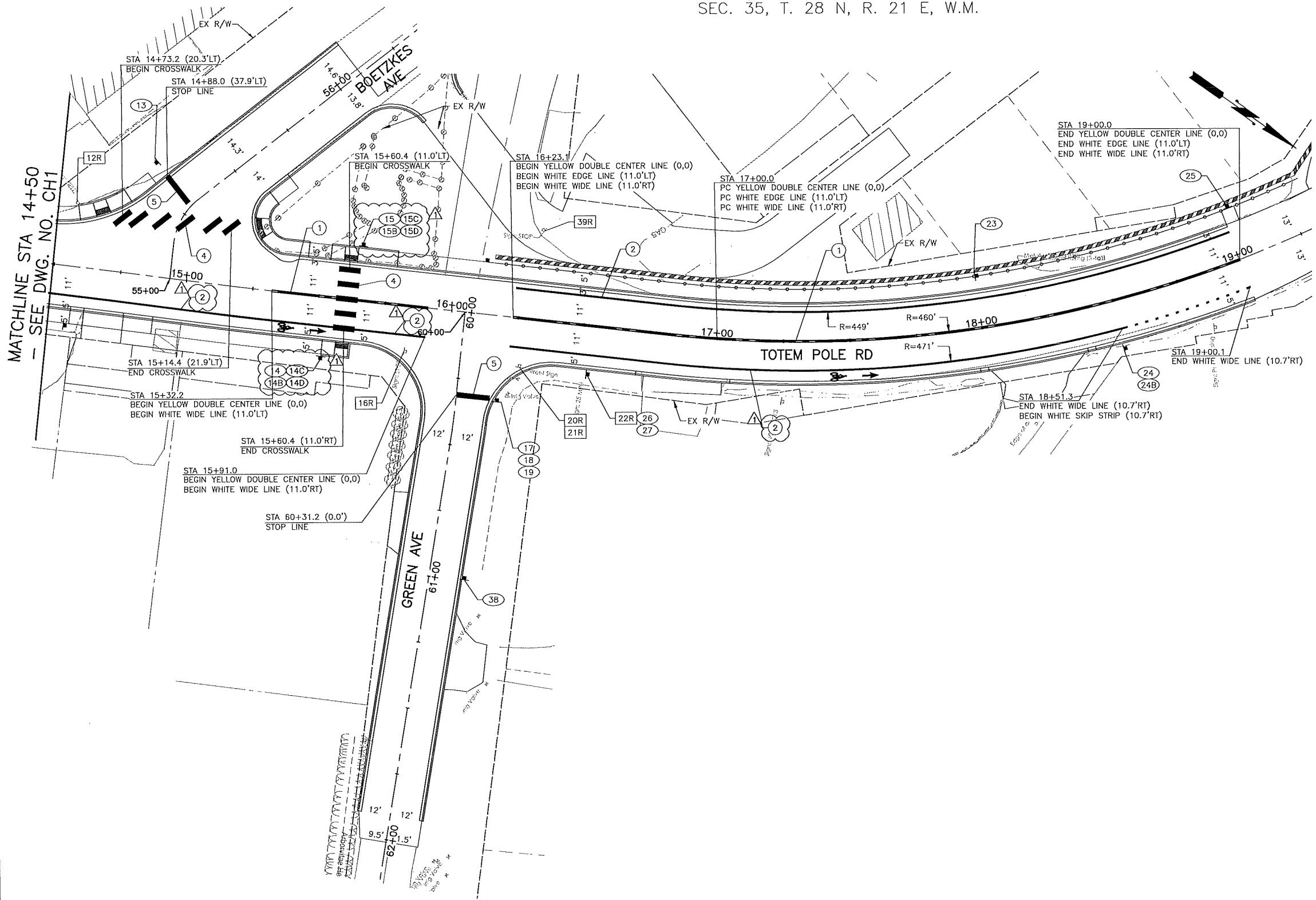
Date
11/2025

CRP
#650

Project Number
20220011

CHELAN COUNTY
TOTEM POLE ROAD PHASE 1
ILLUMINATION DETAILS

Drawing No.
IL2
Sheet No.
40
50
of Total



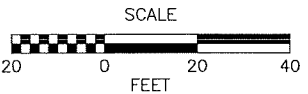
- CHANNELIZATION NOTES:**
- 1. INSTALL PAINTED YELLOW DOUBLE CENTERLINE PER WSDOT STD. PLAN M-20.10.
 - 2. INSTALL PAINTED 6" WHITE WIDE LINE PER SPECIAL PROVISION 8-22.
 - 3. INSTALL PAINTED YELLOW EDGE LINE PER WSDOT STD. PLAN M-20.10.
 - 4. INSTALL THERMOPLASTIC CROSSWALK PER CHELAN COUNTY STD. PLAN M-24.60.
 - 5. INSTALL THERMOPLASTIC STOP LINE PER WSDOT STD. PLAN M-24.60.
 - 6. NOT USED.

- SIGN LEGEND**
- (X) - NEW SIGN
 - XXR - REMOVE EXISTING SIGN
 - (NEW LOCATION) EXISTING SIGN ASSEMBLY TO BE RELOCATED
 - (EXISTING LOCATION)
 - - NEW SIGN
 - - EXISTING SIGN

- GENERAL NOTES:**
- 1. SEE DWG. NO. S1 FOR SIGN SCHEDULE.
 - 2. LANE WIDTHS INCLUDE GUTTER WHERE EDGE LINE IS NOT USED.
 - 3. ALL SIGNS NOT SHOWN AS REMOVED, RELOCATED, OR NEW SHALL BE MAINTAINED.
 - 4. ALL SIGNS SHALL BE LOCATED PER WSDOT STD PLAN G-20.10.
 - 5. ALL SIGN SUPPORTS SHALL BE INSTALLED WSDOT STD PLAN G-24.50.
 - 6. PAINTED BIKE LANE SYMBOLS SHALL BE INSTALLED PER WSDOT STD PLAN M-9.50

CHANNELIZATION SYMBOL SCHEDULE		
SYMBOL	STATION	OFFSET
	15+54	13.0' RT
	17+60	13.0' RT

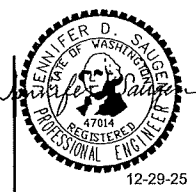
STATION VALUES ARE FROM BASE OF SYMBOL. CENTER EACH SYMBOL IN LANE.



Dec 23, 2025 - 4:28pm nelson X:\Chelan County\Projects\2022\2021 - Totem Pole Rd, Prelim Engineering\CADD\02 - Plan Sheets\Totem Pole Rd SOUTH\2022\2021-CH-SO.dwg Layout Name: CH2

No.	Date	Revision	By	Appr.
2	12/22/25	ADDENDUM #2	ZM	JS
1	12/18/25	ADDENDUM #1	JS	JS

PERTEET
123 OHME GARDEN ROAD, SUITE 8
WENATCHEE, WA 98801
800.615.9900



Drawn By	Date
N. EATON	11/2025
Designed By	
M. WARNER	11/2025
Checked By	
J. LEE	11/2025
Approved By	
J. SAUGEN	11/2025

CRP #650	Project Number 20220011
----------	-------------------------

CHELAN COUNTY	Drawing No. CH2
TOTEM POLE ROAD PHASE 1	Sheet No. 42 of 50
CHANNELIZATION/SIGNING PLAN	

⚠

SIGN SCHEDULE									
SIGN NO.	EXISTING STATION	EXISTING OFFSET	PROPOSED STATION	PROPOSED OFFSET	SIGN TYPE	SIZE		DESCRIPTION	REMARKS
						X (IN)	Y (IN)		
1R	10+42.8	17.6' LT			R1-1			STOP	REMOVE SIGN AND POST
2			10+39.8	9.7' LT	R1-1	30	30	STOP	INSTALL NEW SIGN AND POST
3R	10+69.2	15.6' RT			R1-2			YIELD	REMOVE SIGN AND POST
4R	10+70.9	17.0' RT			R5-1			DO NOT ENTER	REMOVE SIGN AND POST
5			10+40.9	17.0' RT	R5-1	30	30	DO NOT ENTER	INSTALL NEW SIGN AND POST
6R	11+06.4	20.0' RT			R7-1			NO PARKING	REMOVE SIGN AND POST
7R	11+81.3	20.2' RT			R7-1			NO PARKING	REMOVE SIGN AND POST
8			12+56.3	22.7' RT	R2-1	24	30	25 MPH	INSTALL NEW SIGN AND POST
9R	13+44.2	21.5' RT			R14-1(MOD)			TRUCK ROUTE [LEFT]	REMOVE SIGN AND POST
10			13+44.2	22.0' RT	R14-1(MOD)			TRUCK ROUTE [LEFT]	INSTALL NEW SIGN AND POST
11			14+45.2	22.0' LT	R3-17	30	24	BIKE LANE	INSTALL NEW SIGN AND POST
12R	14+56.3	24.9' LT			R1-2			YIELD	REMOVE SIGN AND POST
13			14+84.2	43.1' LT	R1-1	30	30	STOP	INSTALL NEW SIGN AND POST
14			15+52.9	23.0' RT	W11-2	24	24	PEDESTRIAN	*
14B			15+52.9	23.0' RT	W16-7PL	24	12	LEFT DIAGONAL PLAQUE	*
14C			15+52.9	23.0' RT	W16-7PR	24	12	RIGHT DIAGONAL PLAQUE	*
14D			15+52.9	23.0' RT	W11-501	12	12	CROSS TRAFFIC MAY NOT STOP USE CAUTION	*
15			15+64.3	21.0' LT	W11-2	24	24	PEDESTRIAN	*
15B			15+64.3	21.0' LT	W16-7PL	24	12	LEFT DIAGONAL PLAQUE	*
15C			15+64.3	21.0' LT	W16-7PR	24	12	RIGHT DIAGONAL PLAQUE	*
15D			15+64.3	21.0' LT	W11-501	12	12	CROSS TRAFFIC MAY NOT STOP USE CAUTION	*
16R	15+84.3	17.2' RT			R1-1			STOP	REMOVE SIGN AND POST
17			16+19.25	21.25' RT	D3-101	48	12	GREEN AVE	INSTALL NEW SIGN AND POST
18			16+19.25	21.25' RT	D3-101	60	12	TOTEM POLE RD	INSTALL NEW SIGN BELOW SIGN 17
19			16+19.25	21.25' RT	R1-1	30	30	STOP	INSTALL NEW SIGN BELOW SIGN 18
20R	16+27.5	17.9' RT			D3-101			GREEN AVE	REMOVE SIGN AND POST
21R	16+27.5	17.9' RT			D3-101			TOTEM POLE RD	REMOVE SIGN AND POST
22	NOT USED								
22R			16+52.5	17.6' RT	R2-1	24	30	25 MPH	REMOVE SIGN AND POST
23			18+00.0	19.5' LT	W23-2	24	24	NEW TRAFFIC PATTERN AHEAD	INSTALL NEW SIGN AND POST
24			18+49.3	18.5' RT	R3-17	30	24	BIKE LANE	INSTALL NEW SIGN AND POST
25			19+02.7	20.5' LT	R9-3A	24	24	NO PEDESTRIAN CROSSING	INSTALL NEW SIGN AND POST
38			60+99.2	160.80 Lt	W23-3	24	24	NEW TRAFFIC PATTERN AHEAD	INSTALL NEW SIGN AND POST
39R	16+30.1	33.6' LT			R1-1			STOP	REMOVE SIGN AND POST
24B			18+43.3	18.6' RT	R3-17C	30	12	ENDS	INSTALL NEW SIGN BELOW SING 24
26			16+52.5	17.6' RT	R2-1	24	30	25 MPH	INSTALL NEW SIGN AND POST
27			16+52.5	17.6' RT	W1-10R	30	30	RIGHT CURVE WITH INTERSECTION	INSTALL NEW SIGN BELOW SIGN 26

* INSTALL SIGNS ON SIGNAL POST PER RAPID RECTANGULAR FLASHING DETAIL, AND BI-DIRECTIONAL CONFIGURATION DETAILS ON DWG. NO. IL2.

Dec 23, 2025 - 4:28pm nation X:\Chelan County\Projects\2022\2021 - Prelim Engineering\CADD\02 - Plan Sheets\Totem Pole Rd SOUTH\2022\2021-CH-SO.dwg Layout Name: S1

1	12/22/25	ADDENDA #2	ZM	JS
No.	Date	Revision	By	Appr.



PERTEET
123 OHME GARDEN ROAD, SUITE 8
WENATCHEE, WA 98801
800.615.9900



Know what's below.
Call before you dig.



Drawn By	Date
N. EATON	11/2025
Designed By	
M. WARNER	11/2025
Checked By	
J. LEE	11/2025
Approved By	
J. SAUGEN	11/2025

CRP #650	Project Number 20220011
----------	-------------------------

CHELAN COUNTY
TOTEM POLE ROAD PHASE 1
SIGN SPECIFICATIONS

Drawing No. S1	Sheet No. 43 of 50 Total
----------------	--------------------------