



CHELAN COUNTY

DEPARTMENT OF PUBLIC WORKS
316 WASHINGTON STREET
SUITE 402
WENATCHEE, WASHINGTON 98801
TELEPHONE 509/667-6415

ERIC P. PIERSON, PE
DIRECTOR/COUNTY ENGINEER

General Sign Information

1. Applicants installing road name signs must adhere to Chelan County Code 10.20.300-330, Resolution No. 2015-84, and all its amendments.
2. All road names go through a review process and must be approved by the County Engineer.
3. All signs, whether they are placed in the County right-of-way or on private property, will be fabricated and installed by the applicant.
4. Installation of private signs require an inspection by Chelan County to ensure compliance with its sign standards and that of the Manual of Uniform Traffic Control Devices (MUTCD). To schedule an inspection, contact:

Wendy Williams
Phone: (509) 667-6415
Email: Wendy.williams@co.chelan.wa.us

Sign Plates Requirements

1. Two single-sided signs, which will be center mounted, are required; double-sided signs cannot be used. No post caps are allowed for mounting.
2. The sheeting for signs is Type IV High Intensity Prismatic (HIP).
3. Background color is green. No white border, or any border, is allowed. Lettering color is white.
4. The sign panels are constructed from aluminum sign blanks (thickness of 0.08 inches). The height of the metal signs are 10 inches.
5. The letters are Highway C regular font. (No bold type.) Uppercase letters are 6 inches tall. Lowercase letters are 4 inches tall.
6. Private roads must have the abbreviated "Pvt" at the end of the name. **(See Exhibit A)**

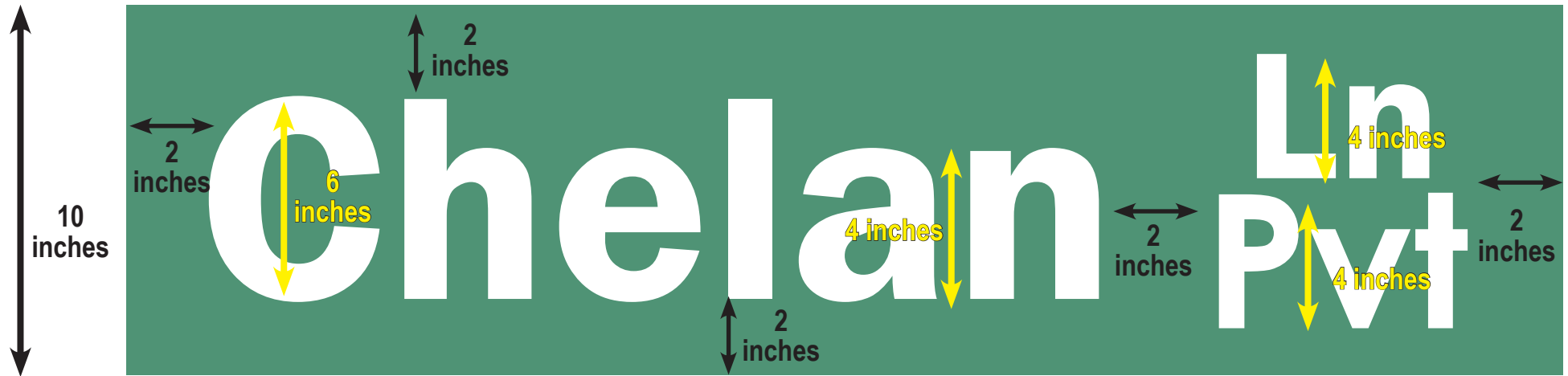
Sign Post Requirements

1. Applicants can choose from one of two options for the sign post: treated wood or 12-gauge steel.
2. Steel Post (private or county roads): The sign post is 12 gauge, 2¼-inch steel with 2½-inch breakaway base. **(See Exhibit B)**
3. Wood Post (private roads only): 4x4 treated wood post with two 5/16-inch lag bolts with washers. **(See Exhibit C)**
4. Stop signs may be required; this will be determined on a case-by-case basis. Stop signs are placed within 40 feet of stop bars.

Sign Construction & Placement

1. See **Exhibit D**.

Exhibit A

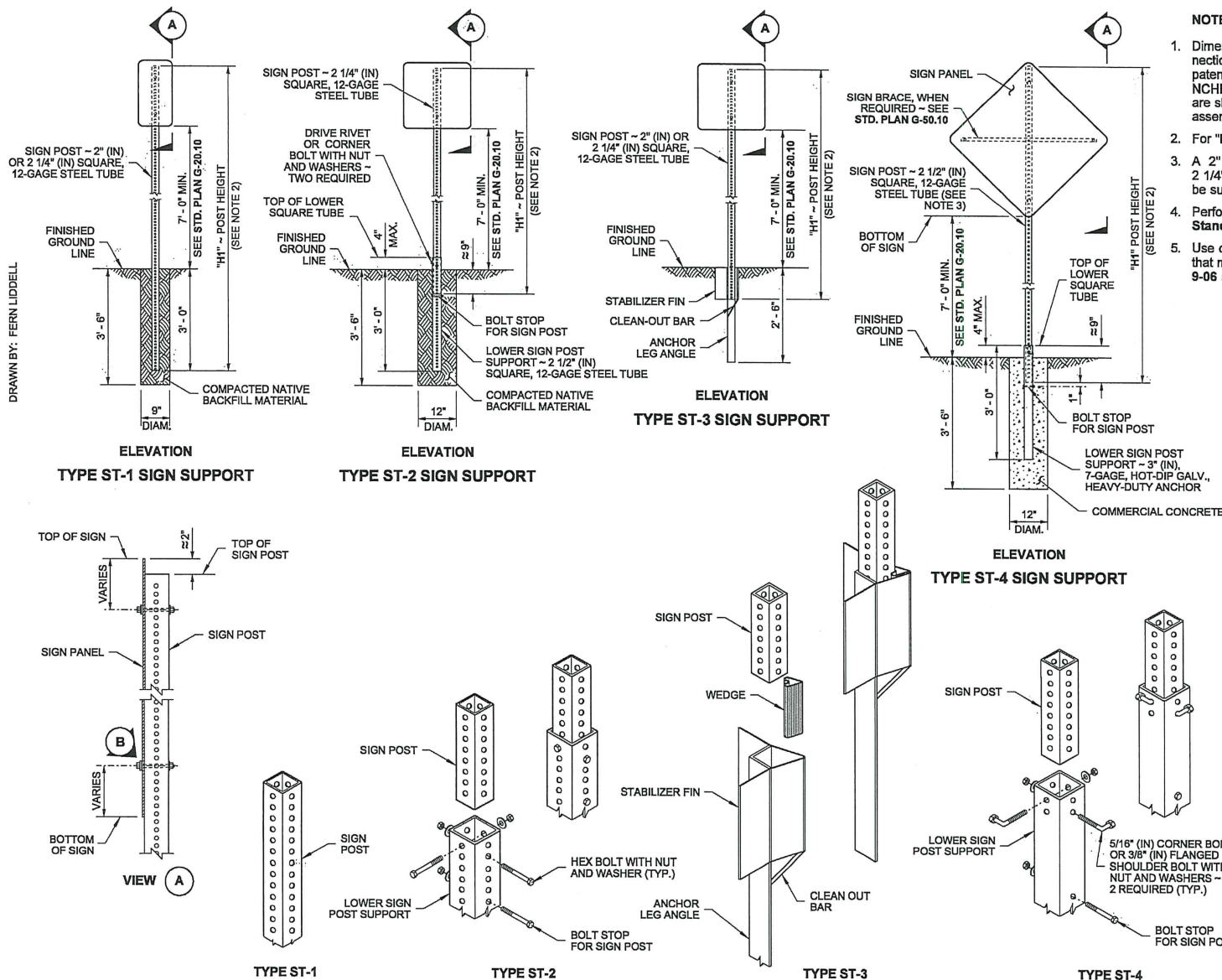


CHECKLIST

- Sign is 10 inches tall and green.
- There is no white border on the sign.
- Letters use Highway C font and are white.
- Uppercase letters are 6 inches tall.
- Lowercase letters are 4 inches tall.
- 2 inches of space between words
- The road name placed is 2 inches from the left and right sides of the sign and 2 inches from the top and bottom.
- Private roads must be abbreviated as Pvt.

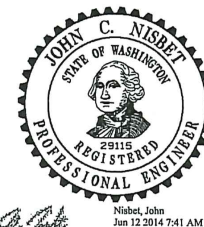
**Graphic is not drawn to scale.

Exhibit B



NOTES

1. Dimensions for the parts used to assemble the base connections are intentionally not shown. Base connections are patented, manufactured products that are in compliance with NCHRP 350 crash test criteria. The base connection details are shown on this plan only to illustrate how the parts are assembled.
2. For "H1", refer to the Sign Specification Sheet in the Contract.
3. A 2" (in) post with a 2 1/4" (in) PSST anchor or a 2 1/4" (in) post with a 2 1/2" (in) PSST anchor may be substituted. See Contract Plans.
4. Perforated square steel post shall meet the requirements of **Standard Specification 9-06**.
5. Use only base connection manufacturer supplied hardware that meets the requirements of **Standard Specifications 9-06 and 9-28**.



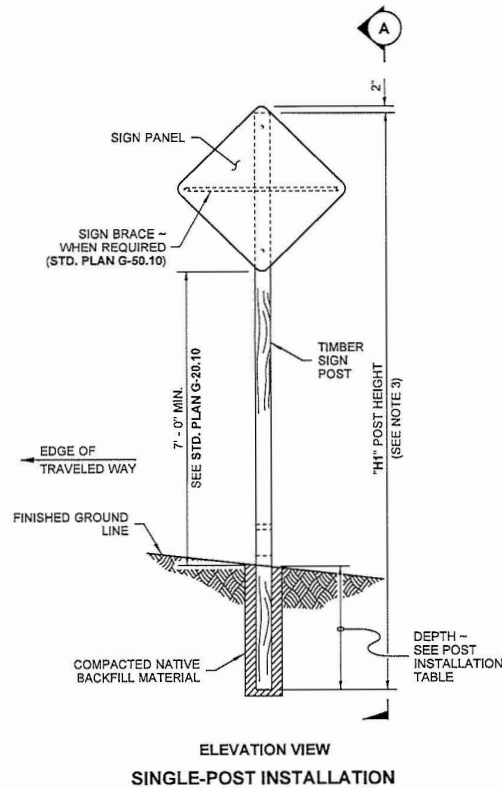
STEEL SIGN SUPPORT TYPES ST-1 - ST-4 INSTALLATION DETAILS STANDARD PLAN G-24.50-03

SHEET 1 OF 1 SHEET

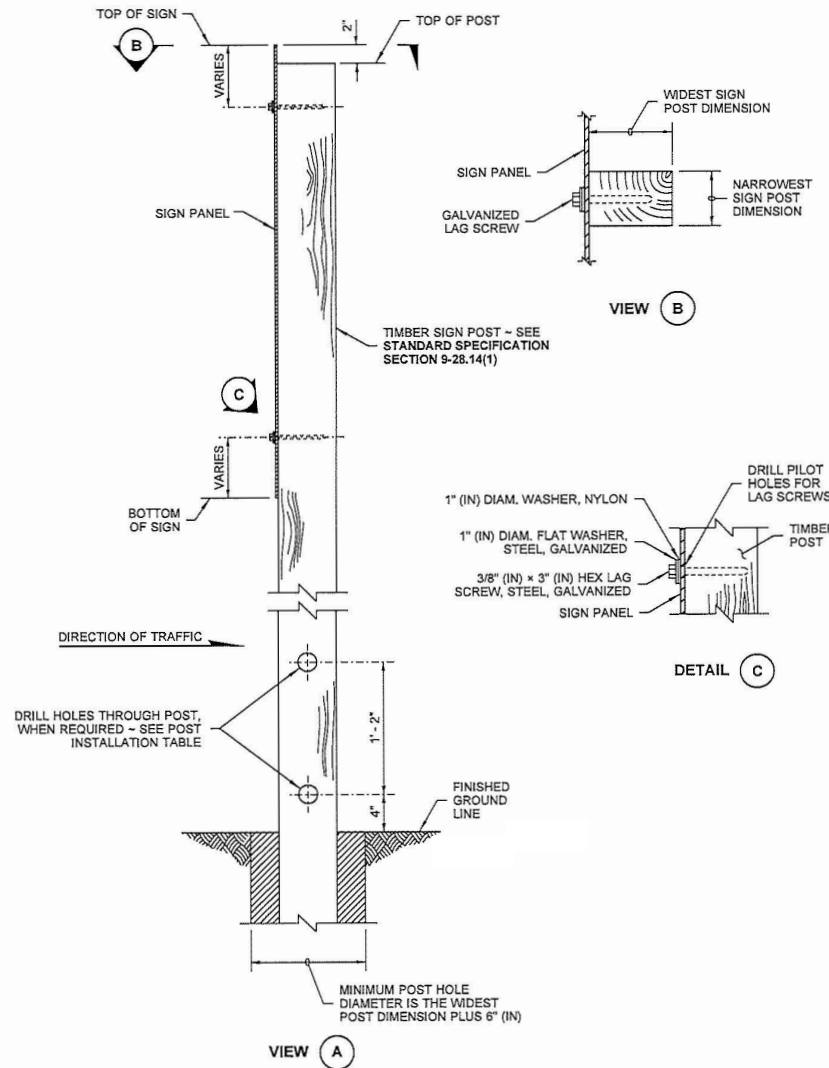


Exhibit C

DRAWN BY: BILL BERENS



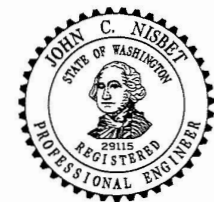
Wood Post Requirements



NOTES

1. Notch is only required with multiple post installations.
2. 6x10, 8x10, and 6x12 Timber Sign Posts cannot be made breakaway and do not have holes or notches. These posts shall not be installed within the Design Clear Zone. They may be installed behind traffic barrier.
3. For "X", "Y", "H1", "H2", "H3", and "H4", refer to the Sign Specification Sheet in the Contract.
4. For 6x6 posts and larger, 7' (ft) minimum spacing is required between posts.
5. All materials shall meet the requirements of **Standard Specification Section 9-28**.

POST INSTALLATION TABLE			
POST SIZE (NOM.)	DEPTH	HOLE DIAMETER	NOTCH DEPTH (SEE NOTE 1)
4x4	3' - 0"	NOT REQ'D	NOT REQ'D
4x6	4' - 0"	1 1/2"	1 1/2"
6x6	4' - 0"	2"	2"
6x8	5' - 0"	3"	3"
6x10	6' - 0"	SEE NOTE 2	SEE NOTE 2
8x10	6' - 0"	SEE NOTE 2	SEE NOTE 2
6x12	7' - 0"	SEE NOTE 2	SEE NOTE 2



Nisbet, John
Digitally signed by Nisbet, John
Date: 2018.06.27 11:29:46
-0700

TIMBER SIGN SUPPORT

STANDARD PLAN G-22.10-04

SHEET 1 OF 3 SHEETS

APPROVED FOR PUBLICATION

Carpenter, Jeff
Jun 28 2018 10:42 AM

STATE DESIGN ENGINEER



Washington State Department of Transportation

Exhibit D

The sign is to be installed a minimum of 12 feet from the edge of the traveled way. To determine the edge of the traveled way, measure from either the white fog line or the edge of the pavement.

