

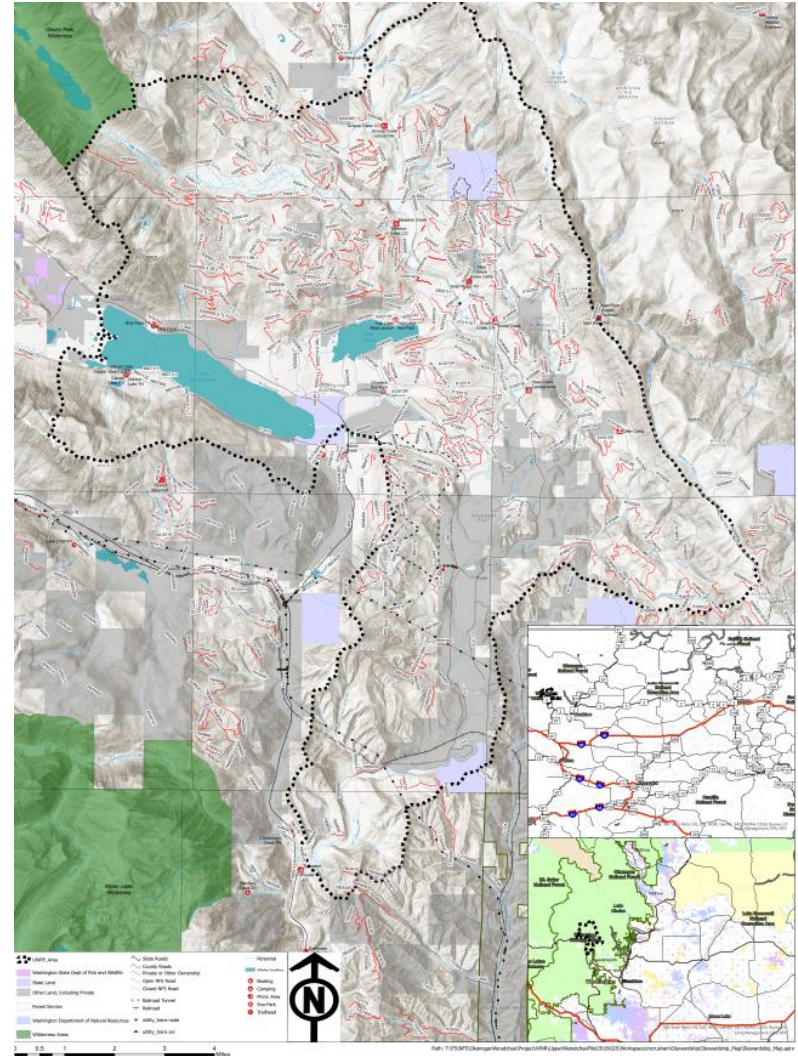


Landscape Restoration:
Upper Wenatchee Pilot Project Area

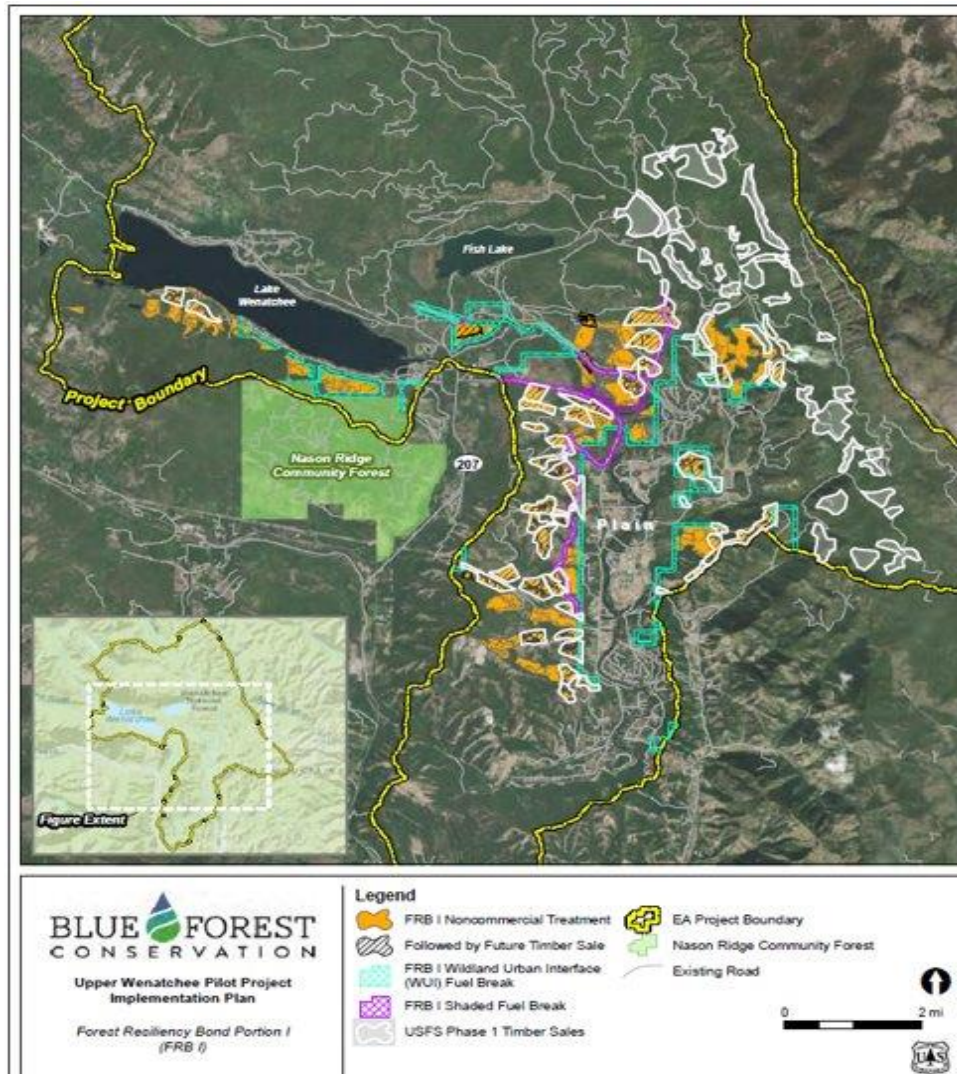
Upper Wenatchee Pilot Project

Approximately 75,000-
acre project area

- Commercial and non-commercial thinning of up to 34000 acres
- Decommissioning of up to 54 miles of roads
- Establishing fuel breaks on approx. 1900 acres
- Restoring Aquatic Organism Passage
- Replacing culverts
- Alluvial Water Storage projects

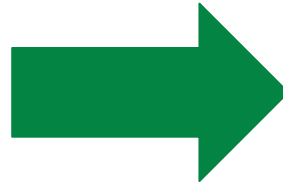
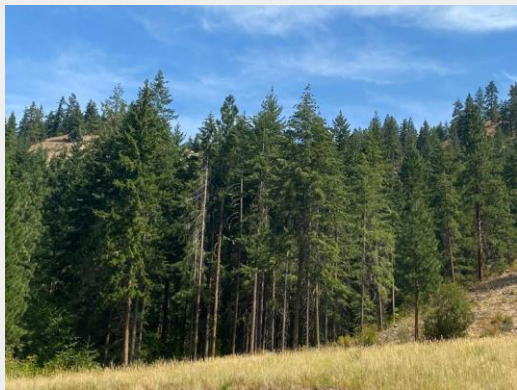


Terrestrial Treatments



Goal of forest health treatments

**Overstocked
Forest**



**Healthy
Forest**



Proposed forest management treatments

Forest Management



- **Non commercial thinning, commercial thinning, and prescribed fire:** Reduce the density of small diameter trees and remove/rearrange fuels on the landscape
- **Fuel breaks:** Opportunities for fire suppression and containment
- **Aquatics:** Watershed restoration to improve habitat, reconnect hydrology, and create natural fuel breaks

Treatment Types: Hand Thinning Lop and Scatter



Hand Thinning: Pile and Burn



Machine Mastication



Shaded Fuel Break

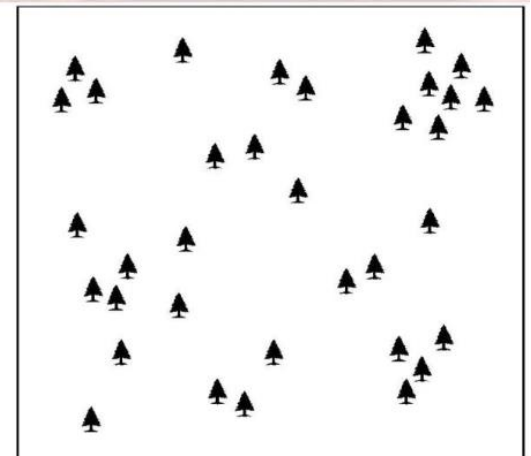
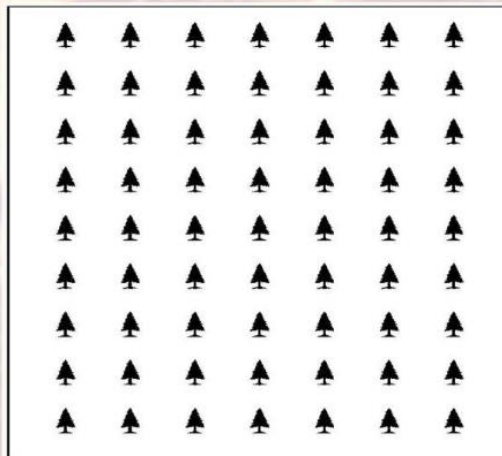


Commercial Harvest

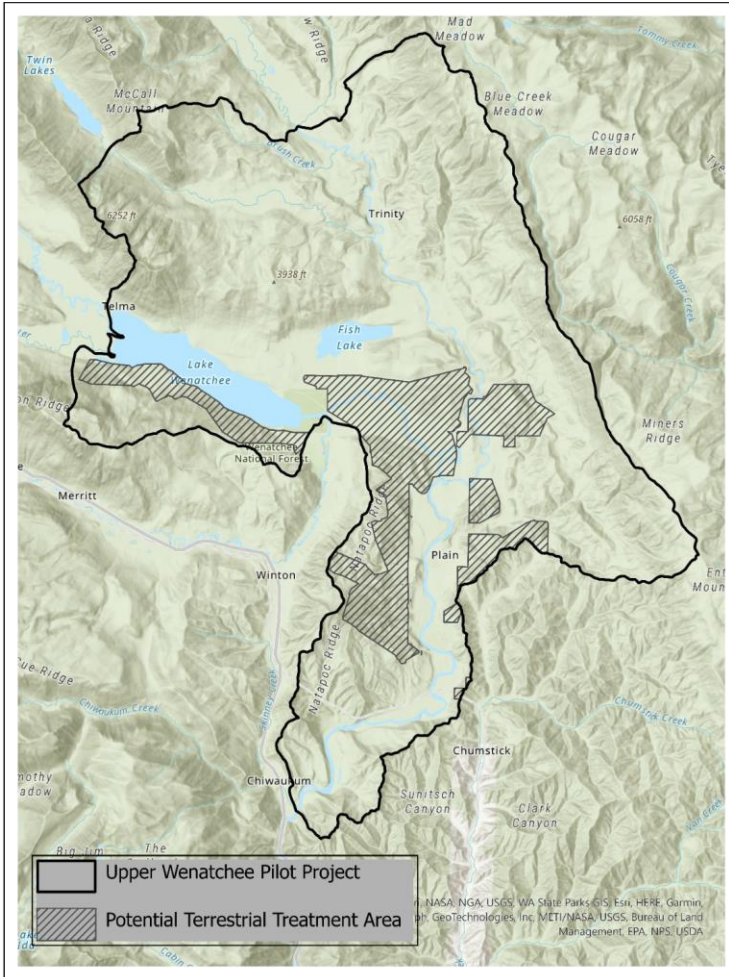


Landscape Restoration Prescription

- Restore the abundance and spatial arrangement of large-old trees across the landscape
- Restore within-stand spatial variability
 - Individuals, Clumps, Openings (ICO)



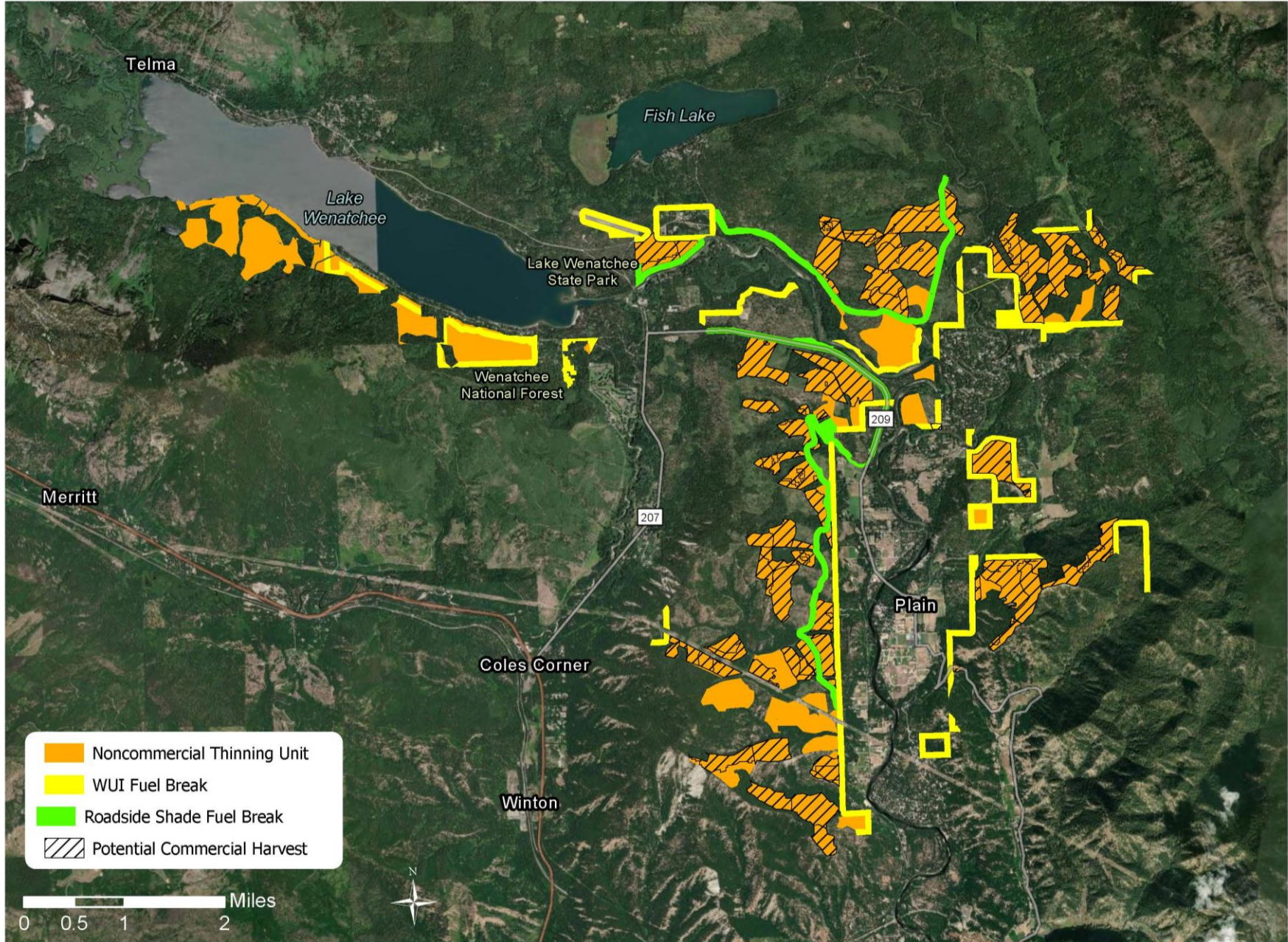
Lake Wenatchee and Plain: Community protection project



Chelan County is leading implementation and project management of 5,000 acres of fuels reduction and accompanying aquatic restoration across a 15,000 acre footprint in the WUI to reduce wildfire risk and protect the communities of Lake Wenatchee and Plain

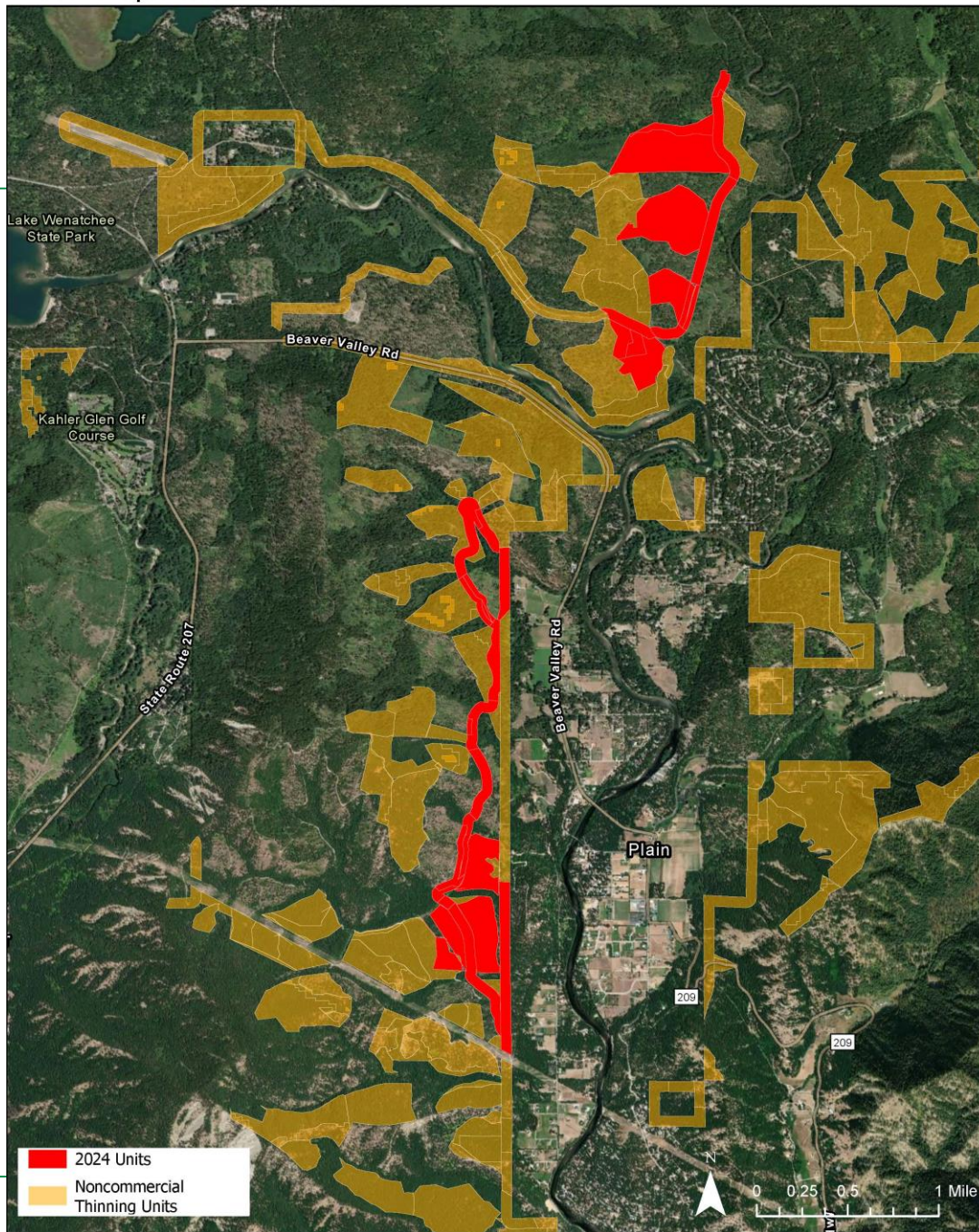


Upper Wenatchee FRBI Project Area Terrestrial Treatments

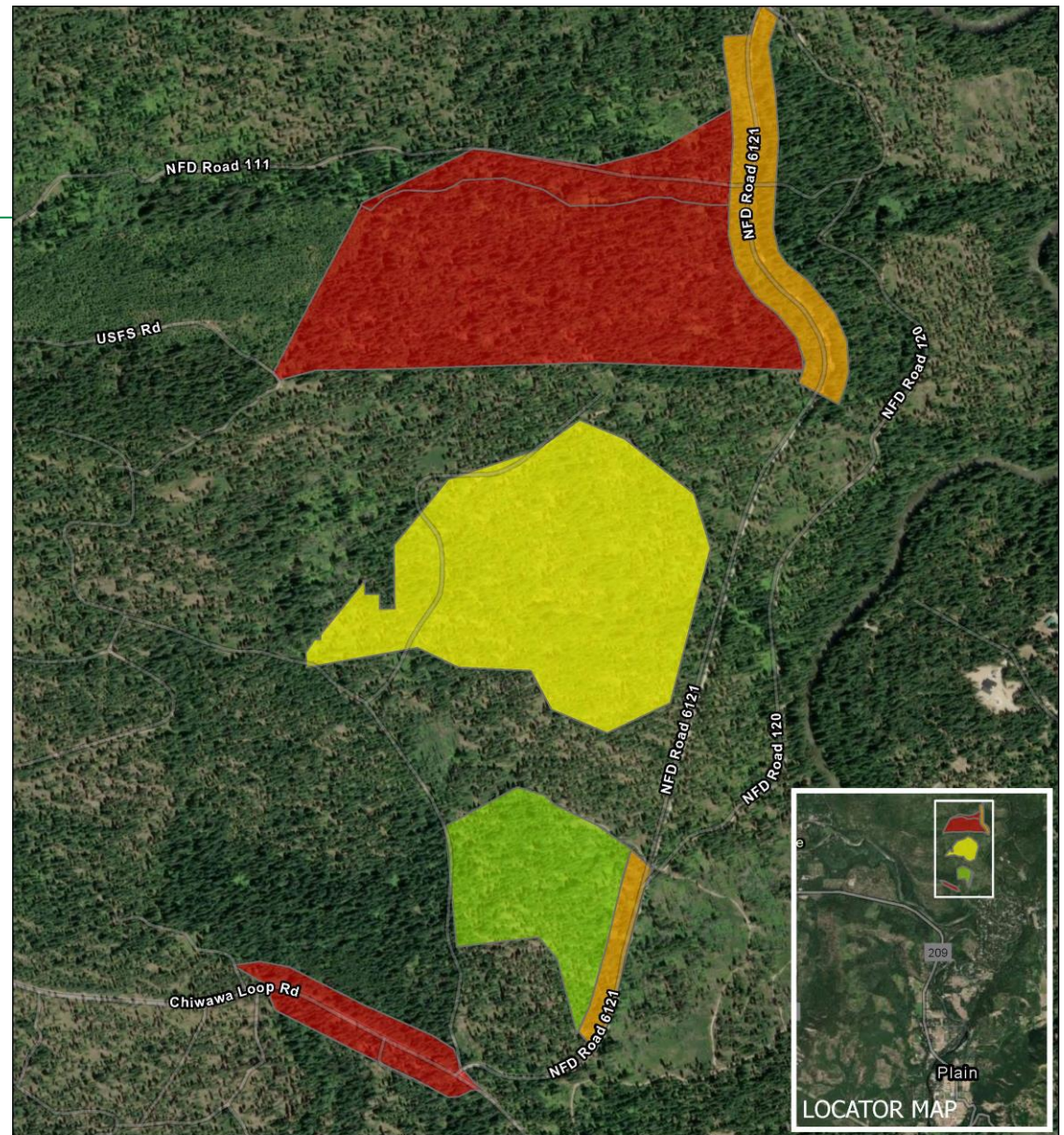


2024 Implementation Units

2024 FRB Implementation Units

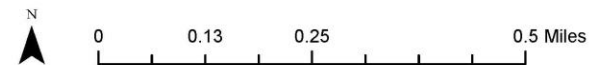


Spring 2024 Implementation Units

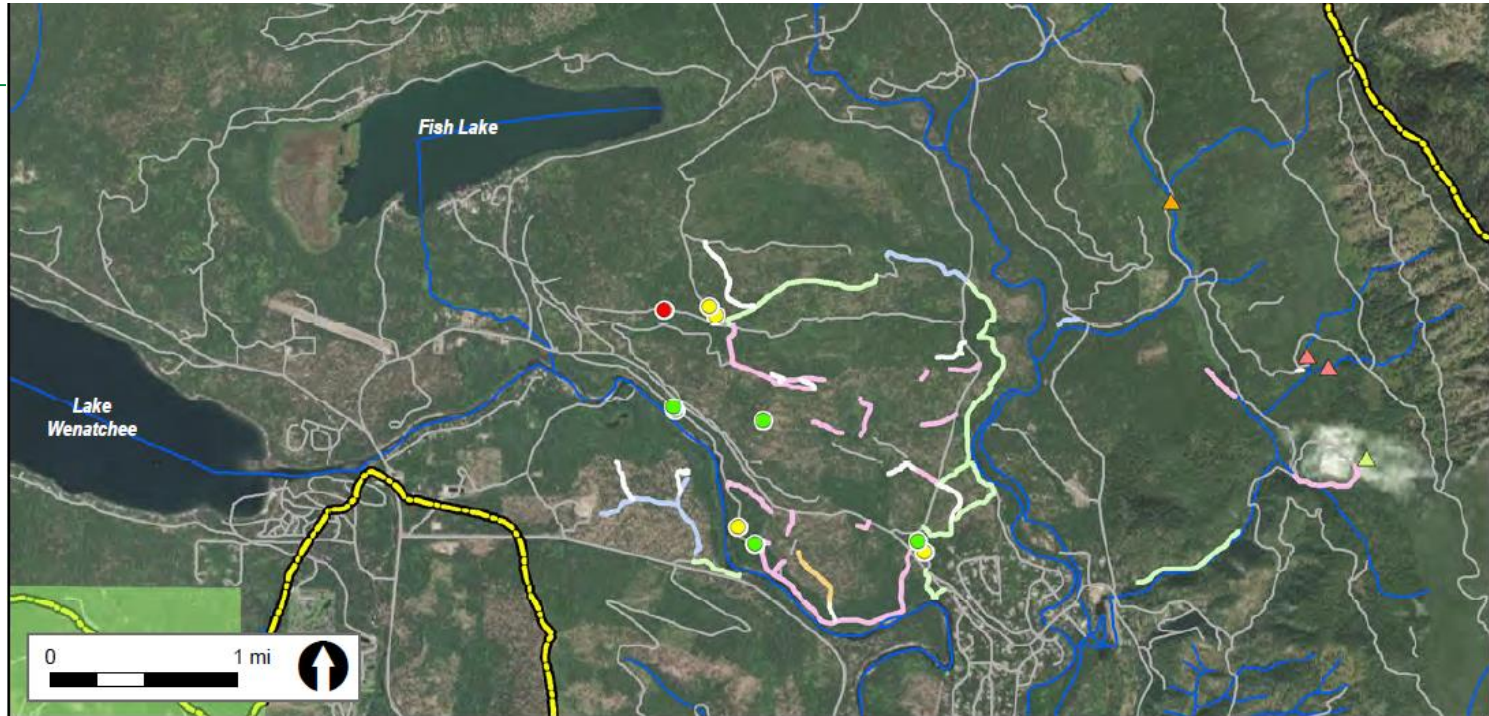


Fuel Load
Light
Moderate
Heavy
Extremely Heavy

Spring 2024 Implementation Units



Roads and Aquatics



BLUE FOREST
CONSERVATION

**Upper Wenatchee Pilot Project
Implementation Plan**

*Forest Resiliency Bond Portion I
(FRB I)*

Figure 6. FRB I Year 1
Aquatics Projects

Legend

- River/Creek
- Existing Road
- EA Project Boundary
- Road Closure/Decommissioning**
- Close Open Road
- Close Unauthorized Route
- Decommission Closed Road
- Decommission Open Road
- Decommission Unauthorized Route

Alluvial Water Storage Project Areas

Road Improvement Opportunities

- High Severity Hydrological Damage
- Medium Severity Hydrological Damage
- Low Severity Hydrological Damage

Culvert Projects

- AOP Replacement
- Non-AOP Replacement
- Remove



Prepared by:
SE GROUP

UWPP Timber Sales

Environmental Analysis was signed in summer of 2023, use of stewardship authority approved shortly after.

Generally, commercial treatments are designed to:

- remove ladder fuels
- promote fire adapted species
- restore spatial arrangement of trees to a more resilient condition

Forest Service will be utilizing stewardship contracts, conventional timber sales, and relying on multiple partners to complete the work identified in the EA.

The 1st Integrated Resource Timber Contract is currently advertised.

Upcoming Timber Harvest

2024

Meadow DXP STWD project, Raging DXP STWD project, Nata-Wen TS

2025

Alder project, Goose project (further analysis needed)

2026

Beaver Project

2027

Timber Sale area identified near lake Wenatchee

2028

District will assess suitability of remaining areas within UWPP for timber harvest

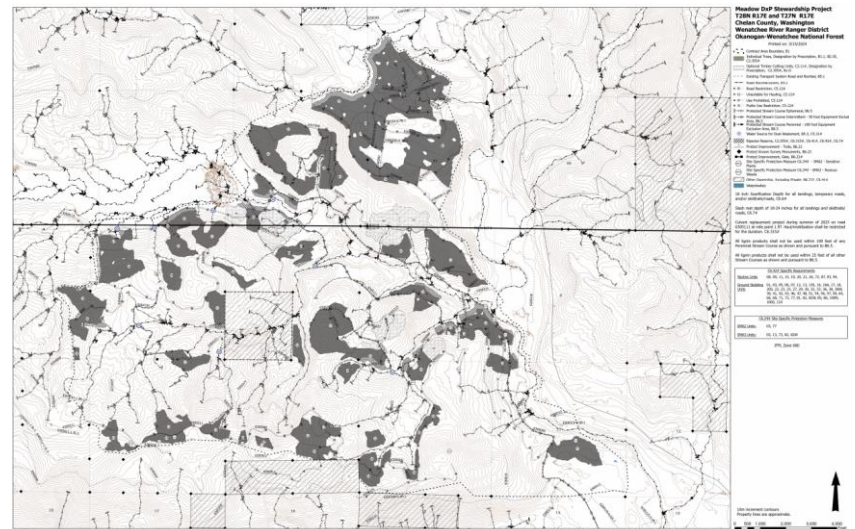
Meadow DXP STWD

4,904 acre contract area, accessed by
FS road 63000

1,191 acres of commercial harvest
Mechanized Harvest and Skyline
Harvest planned.

FS will use retained receipts generated
from timber harvested to fund
restoration projects within UWPP
analysis area:

- 1) Road Decommissioning
- 2) Small Tree Thinning and utilization of non-saw material generated from thinning

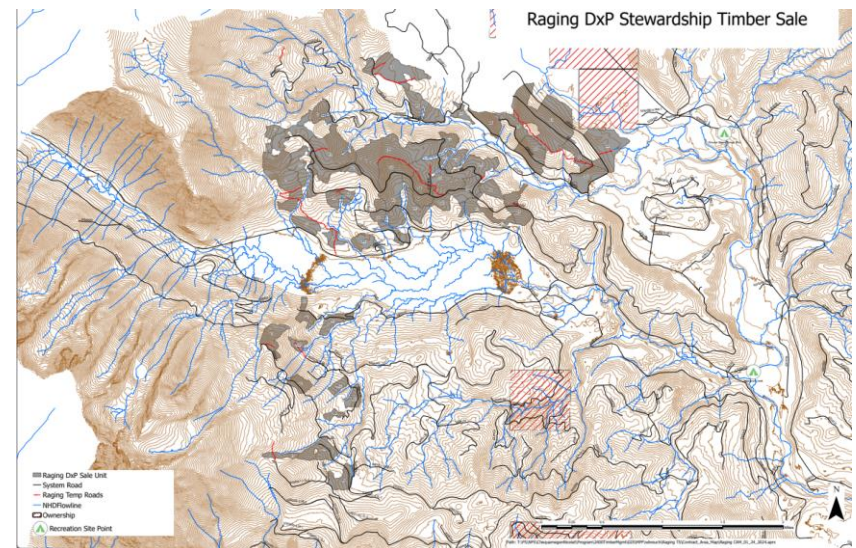


Raging DxP STWD

3,979 acre contract area

FS is preparing this contract for a late summer advertisement

Similar conditions and treatments being implemented as Meadow DxP STWD, also accessed by FS road 63000



Upcoming Timber Harvest

2024

Meadow DXP STWD project, Raging DXP STWD project, Nata-Wen TS

2025

Alder project, Goose project (LSRA dependent)

2026

Beaver Project

2027

Timber Sale area identified near lake Wenatchee

2028

District will assess suitability of remaining areas within UWPP for timber harvest

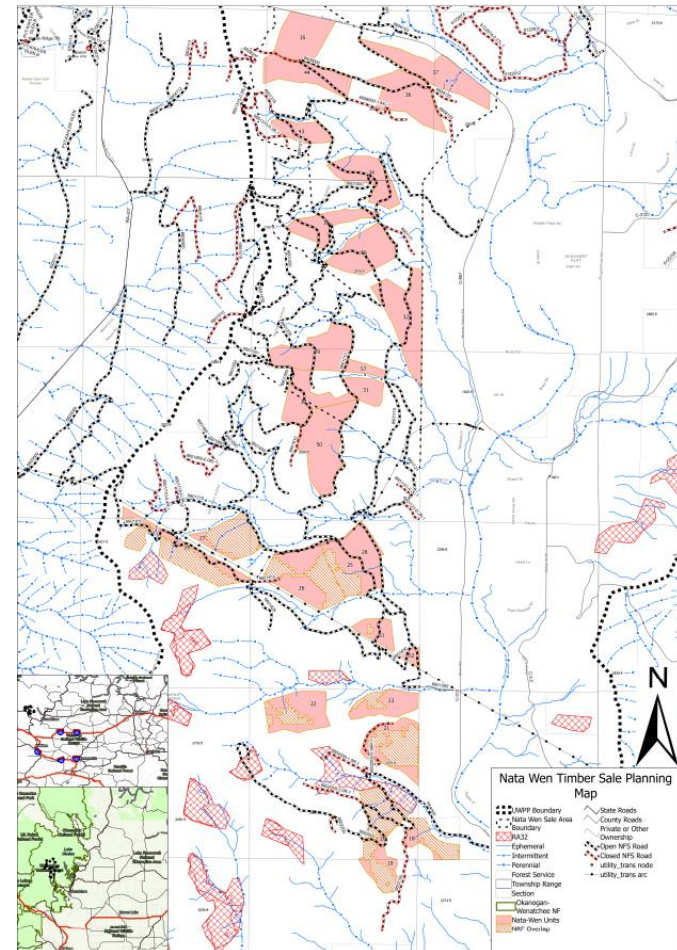
Nata-Wen Timber Sale

Approx 500 acres initially identified

Timber sale is currently being laid out
by WADNR

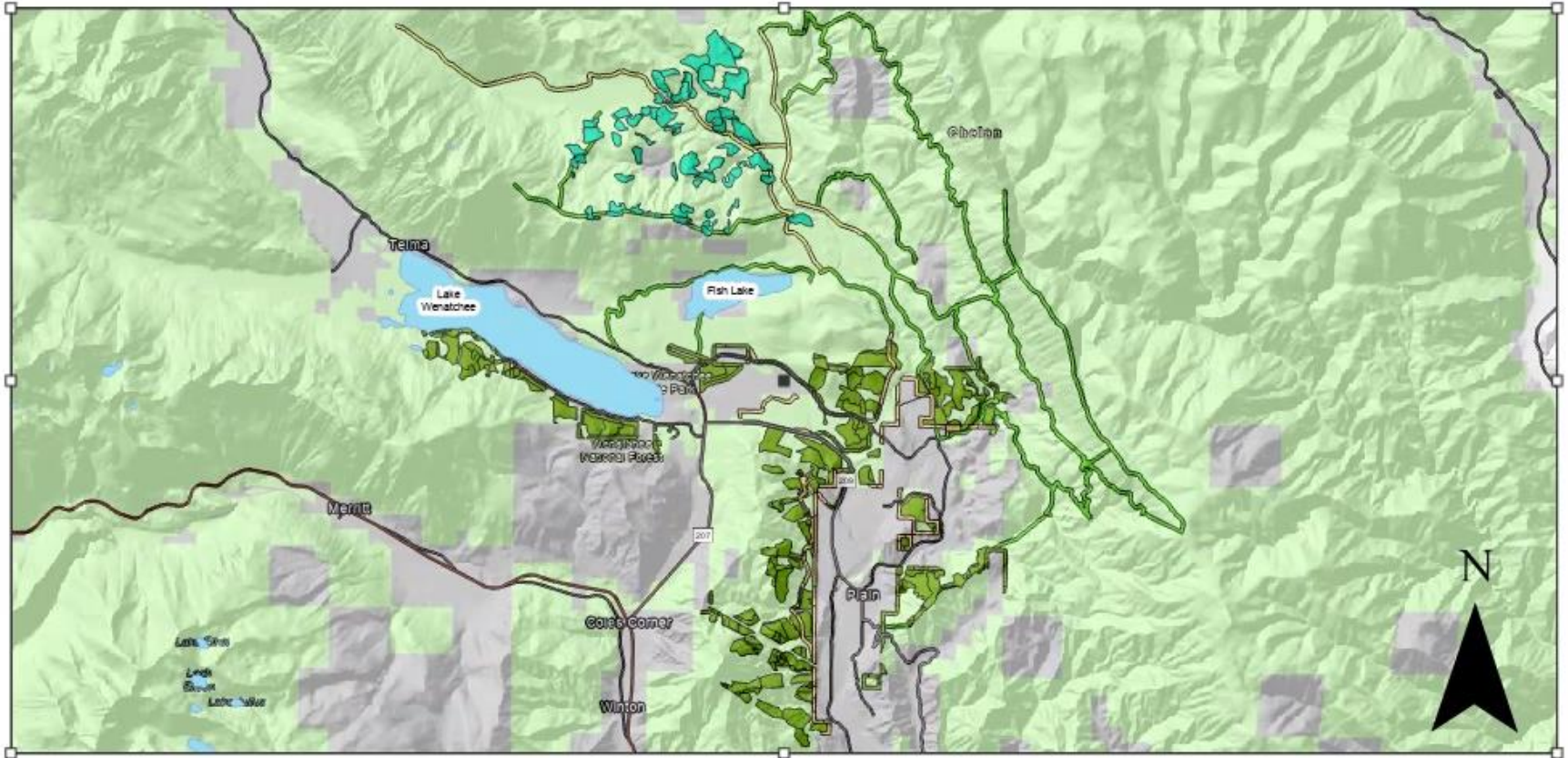
Expected FS advertisement Fall of 2024

Restoration projects being
implemented through Forest
Resilience Bond by Chelan County



UWP Fuel Treatments

Upper Wenatchee Pilot Fuels Projects

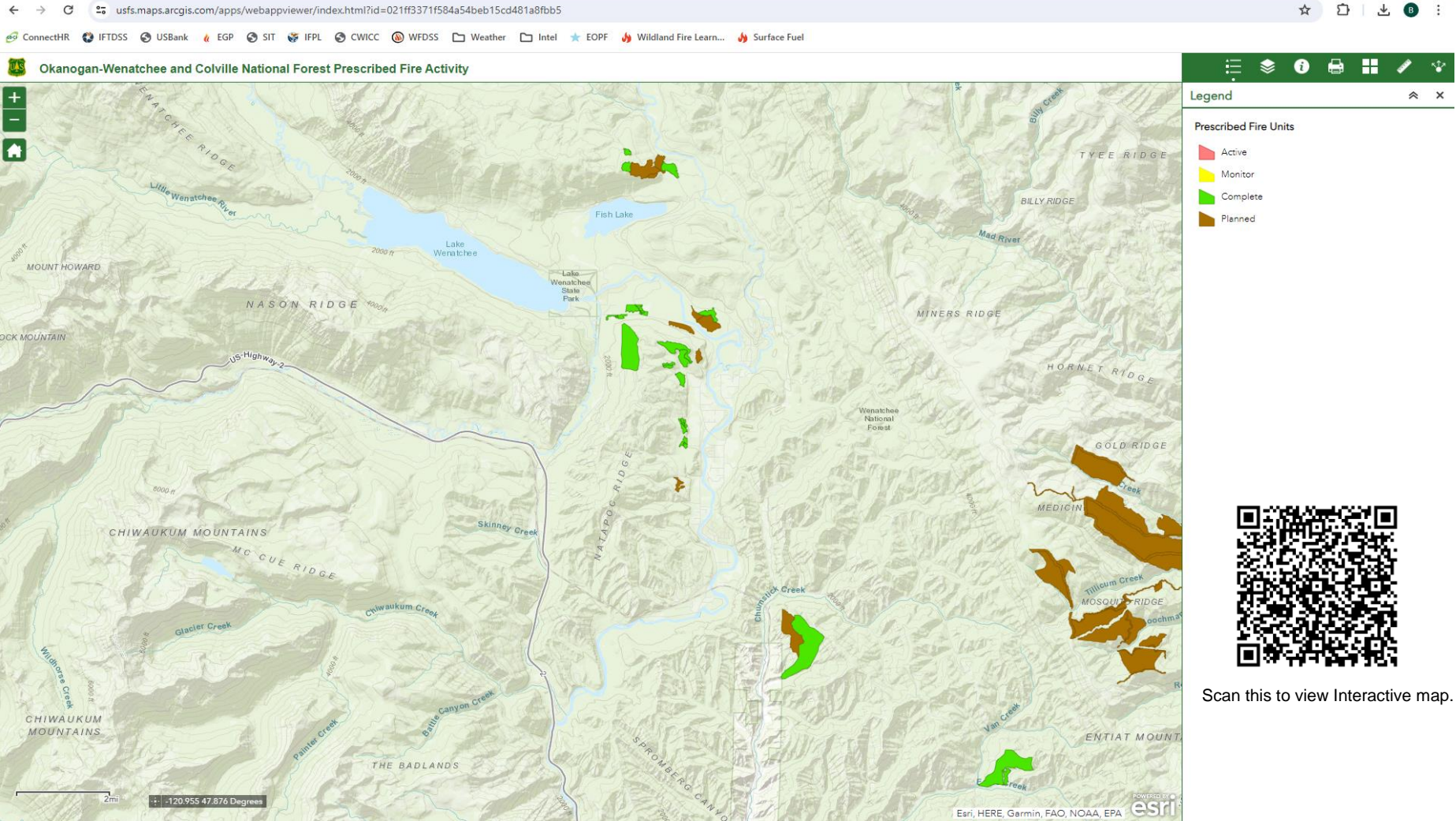


- NON-FS
- USDA FOREST SERVICE
- FRBI Treatment Areas
- Meadow Timber Sale Units
- FuelBreaks
- FRBI 2024 Units
- 2024 GNA Snowbrush Fuel Breaks



This product is produced from information prepared by the USDA, Forest Service, or from other suppliers. The Forest Service can not assure the reliability or suitability of this information for a particular purpose. The data and product accuracy may vary due to compilation from various sources, including modeling and interpretation, and may not meet National Map Accuracy Standards. This information may be updated, corrected, or otherwise modified without notification. For more information contact: Wenatchee River Ranger District (509) 548-2550. The USDA is an equal opportunity provider and employer.

Interactive Map



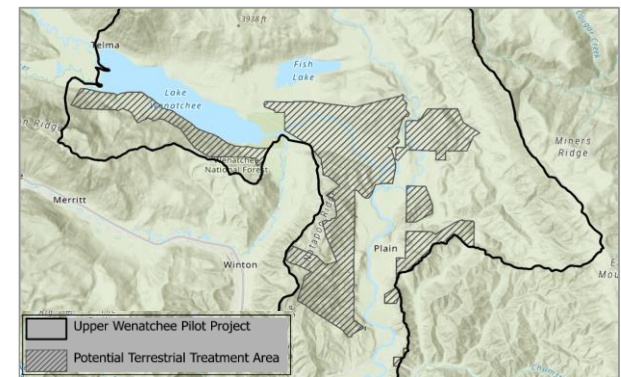
Upper Wenatchee I Forest Resilience Bond (FRB) Project

Background on Blue Forest

Blue Forest is a non-profit focused on accelerating wildfire resilience and ecological restoration through our conservation finance model, called the “Forest Resilience Bond.”

What is Blue Forest’s role in this landscape?

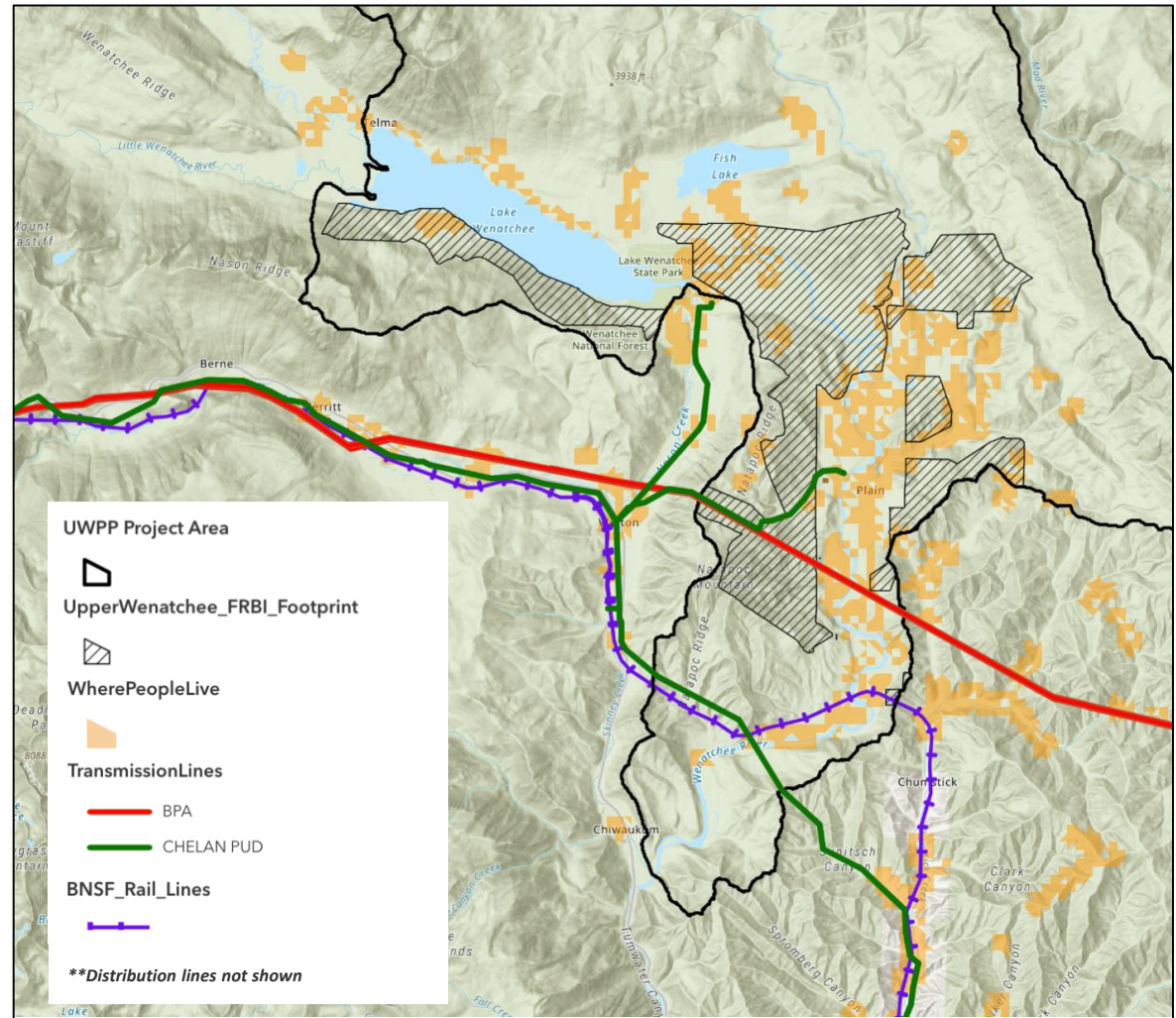
- **Project development & capacity building** - Worked with the Forest, Chelan County, and other partners to identify an initial project footprint, cost estimates, and implementation plan to increase pace and scale of work
- **Benefit analysis** - Science and modeling of benefits related to wildfire risk reduction, water supply replenishment, and economic development to establish business case for funding contributions from new partners
- **Project funding & financing** - Engaging potential funders based on benefit analysis and structuring funding contributions to support implementation activities



Upper Wenatchee I Forest Resilience Bond (FRB) Project Benefits for communities & ecosystems

Anticipated project outcomes:

- **80% decrease** in acres that would burn at high intensity, changing the fire regime from crown to largely surface and underburn
- **16,520 acre-feet** of increased water yield over 10 years
- **170-270 total jobs sustained** (annual full-time effort) over 5 yrs
- **Accelerated work** in the WUI, protecting communities, recreation, and habitat



Upper Wenatchee I Forest Resilience Bond (FRB) Project

Funding, partnerships, and future scaling

UWPP I FRB project vision:

- **Growing implementation capacity** to increase pace of wildfire mitigation near communities of Lake Wenatchee and Plain
- **Facilitating collaboration** of a coalition of partners to fund \$16-18M in wildfire mitigation actions and accompanying aquatic restoration activities
- **Structuring cost-sharing and financing** via the Forest Resilience Bond

Vision for the future:

- Grow and add to these partnerships using the FRB model to support greater pace and scale of wildfire risk reduction and forest restoration activities in North Central Washington in the long-term

Upper Wenatchee FRB 1 funding partnerships to date:





WASHINGTON STATE DEPT OF
**NATURAL
RESOURCES**

Service Forestry: Cost Share Program

By Katie Zander
Service Forester
Chelan and Douglas Counties
WA DNR SE Region



Who are we & what do we do?

- DNR Service Foresters
 - Fuels reduction
 - Forest health
 - Forest resiliency
 - Creative problem solving
- Firefighter
 - Summer/fire season
- Public servant
 - Public resources
 - Private landowner stewardship



WASHINGTON STATE DEPT OF
**NATURAL
RESOURCES**



50% Cost-Share: Eastern WA

Forest Stewardship Plans

- Hire a private consulting forester
- Plan must cover at least 20 forested acres
- Plan must be approved by DNR as meeting current Washington State Integrated Forest Management Plan Guidelines

Forest Fuel Reduction & Forest Health

- Pre-commercial thinning
- Pruning
- Brush control
- Slash disposal



WASHINGTON STATE DEPT OF
**NATURAL
RESOURCES**



Service Forestry Foresters

- Set up a site visit
- Communicate goals and budget
- Assess forest health and fire risk
- Develop a plan based on landowner needs
- Provide information on contractors that would meet the objectives
- Submit for an approval letter
- Provide support during the implementation of the work
- Confirm compliance



WASHINGTON STATE DEPT OF
**NATURAL
RESOURCES**



Project Results



Before



After



WASHINGTON STATE DEPT OF
**NATURAL
RESOURCES**



Community and Forest Resilience



- Joe Hill
- (509) 306-8189
- JoeH@cascadiacd.org
- www.cascadiacd.org

- Isobel Woolner
- (509) 312-8555
- IsobelW@cascadiacd.org
- www.cascadiacd.org



CASCADIA
CONSERVATION DISTRICT

Fuel Break and Forest Resilience Partnership Project

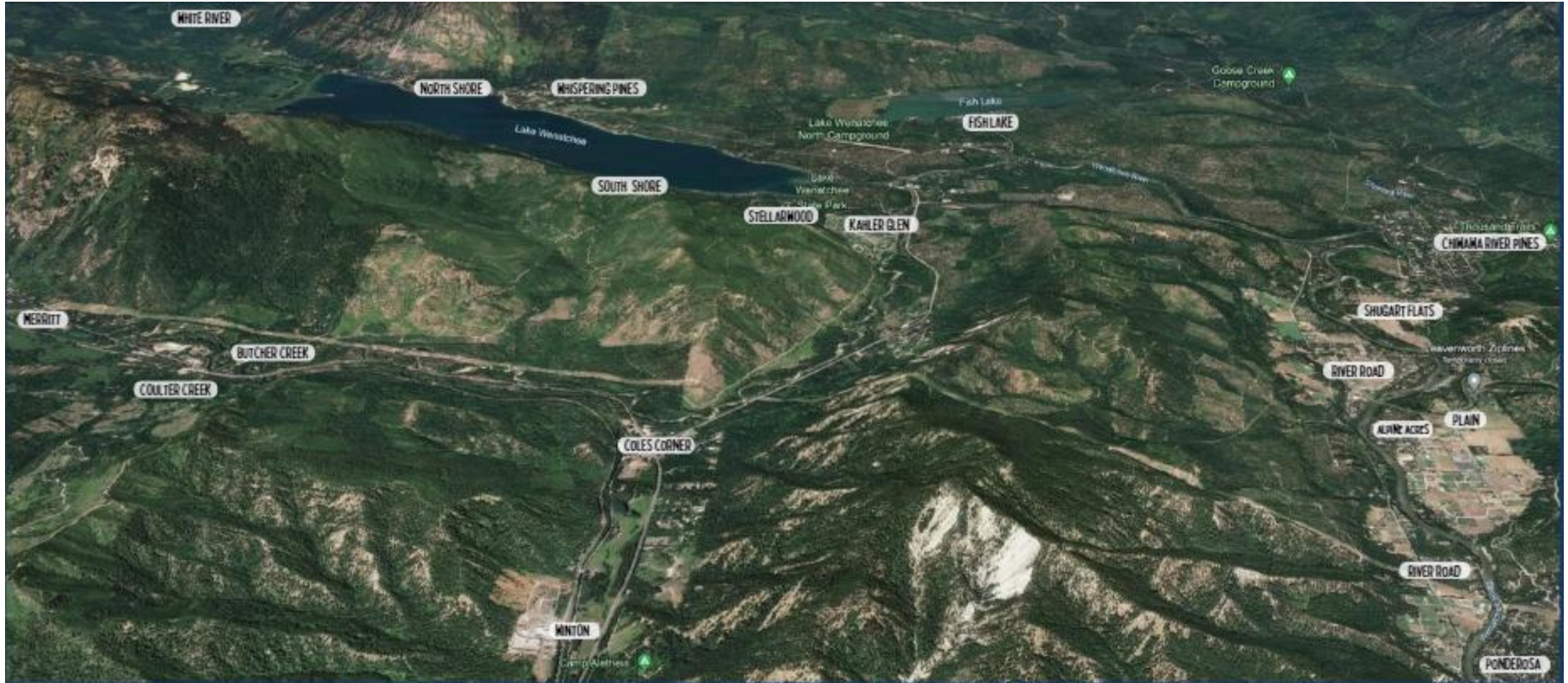
- ▶ Closely working with partners to provide comprehensive fire resilience for all residents.
 - ▶ Free Home Fire-Risk Overviews (CCD or Fire District)
 - ▶ Forestry technical assistance and forestry plans for landowners (CCD and DNR)
 - ▶ Assisting with applying the right cost share program(s) to landowner projects (CCD, DNR, NRCS, USFS)
 - ▶ Coordinating larger projects through consulting forester assistance.
- ▶ Prioritizing areas adjacent to POD lines, PUD lines, and involving multiple landowners.



Landowner Assistance in Prescribed Fire

- ▶ Helping establish Prescribed Burn Associations (PBAs) in Chelan County and change the fire paradigm.
 - ▶ Modeling from PBAs in California, Oregon, Midwest, and South.
 - ▶ Providing support and equipment to landowners to help implement burns.
 - ▶ 3 burns implemented this spring, more planned in the fall.
- ▶ Educational workshops
 - ▶ Burn plan Workshops
 - ▶ Biochar kiln and pile burning workshops
- ▶ Efforts to coordinate with Local, State, and Federal partners to burn across borders (ex. Wyden agreement).
 - ▶ Bear Mountain
 - ▶ Collaboration between USFS, WAFW, CDLT, DNR, and TNC. Initiated by CCD.
 - ▶ Identifying areas of opportunity in USFS project areas





Thank you to all of our partners here tonight for the work they do in our community.

- **Seasonal Fuels Crew and Wildfire Risk Reduction Coordinator**
 - Chipping
 - Wildfire Home Assessments
 - Firewise Community support
- **5 Evacuation Sirens coming soon!**

What would encourage respondents to mitigate?



52%

Report describing
wildfire risk
factors



51%

One-on-one
visit



48%

Help doing the
work

A+

38%

Feedback on
mitigation



41%

Cost-share or
financial
assistance

