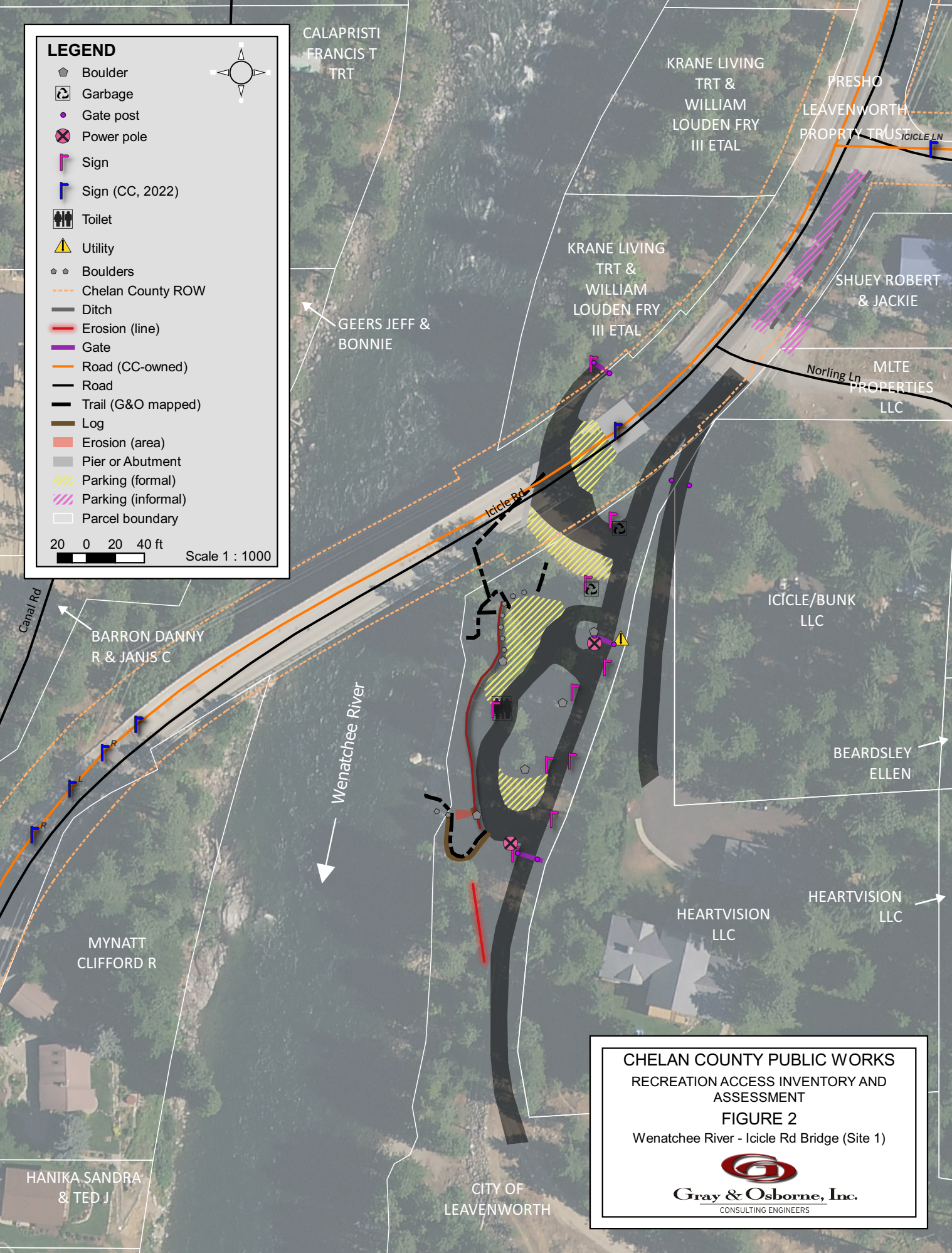


**LEGEND**

- Boulder
- Garbage
- Gate post
- Power pole
- Sign
- Sign (CC, 2022)
- Toilet
- Utility
- Boulders
- Chelan County ROW
- Ditch
- Erosion (line)
- Gate
- Road (CC-owned)
- Road
- Trail (G&O mapped)
- Log
- Erosion (area)
- Pier or Abutment
- Parking (formal)
- Parking (informal)
- Parcel boundary

20 0 20 40 ft  
Scale 1 : 1000



**CHELAN COUNTY PUBLIC WORKS  
RECREATION ACCESS INVENTORY AND  
ASSESSMENT**


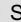







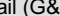


**FIGURE 2**

Wenatchee River - Icicle Rd Bridge (Site 1)

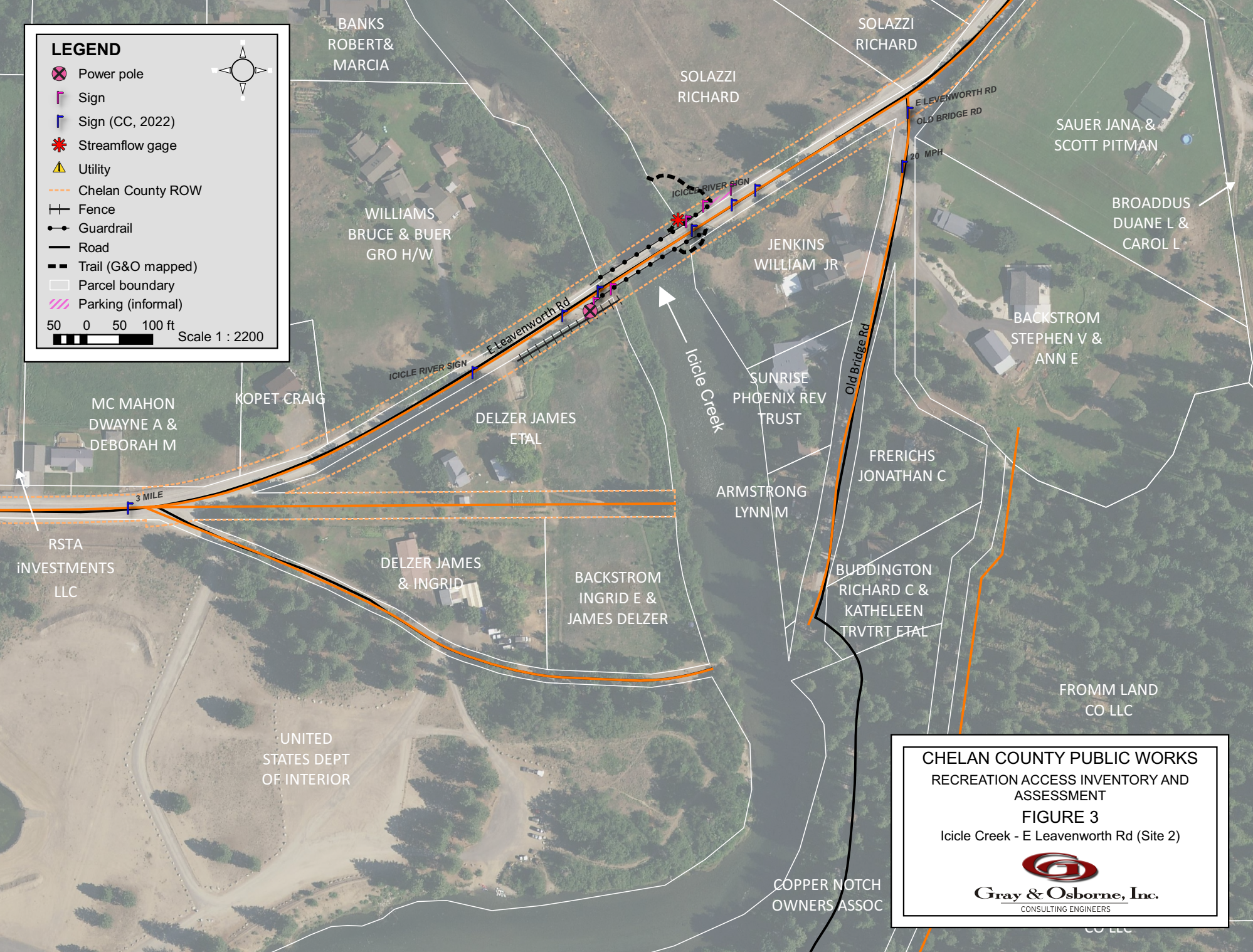
**Gray & Osborne, Inc.**  
CONSULTING ENGINEERS



**LEGEND**

-  Power pole
-  Sign
-  Sign (CC, 2022)
-  Streamflow gage
-  Utility
-  Chelan County ROW
-  Fence
-  Guardrail
-  Road
-  Trail (G&O mapped)
-  Parcel boundary
-  Parking (informal)

50 0 50 100 ft Scale 1 : 2200

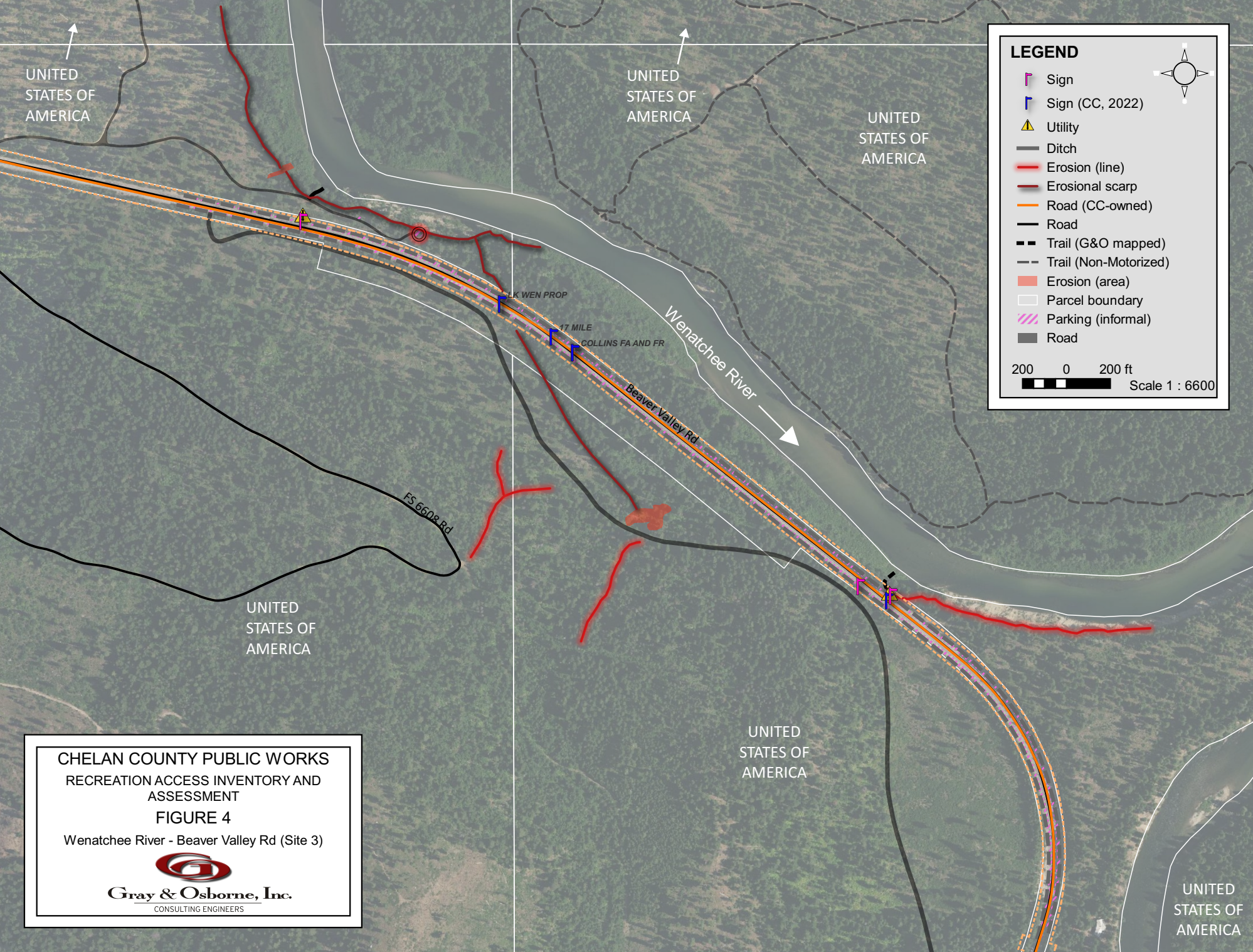


**CHELAN COUNTY PUBLIC WORKS**  
 RECREATION ACCESS INVENTORY AND  
 ASSESSMENT  
**FIGURE 3**  
 Icycle Creek - E Leavenworth Rd (Site 2)



**Gray & Osborne, Inc.**  
 CONSULTING ENGINEERS





**LEGEND**

- Sign
- Sign (CC, 2022)
- Utility
- Ditch
- Erosion (line)
- Erosional scarp
- Road (CC-owned)
- Road
- Trail (G&O mapped)
- Trail (Non-Motorized)
- Erosion (area)
- Parcel boundary
- Parking (informal)
- Road

200 0 200 ft  
 Scale 1 : 6600

CHELAN COUNTY PUBLIC WORKS  
 RECREATION ACCESS INVENTORY AND  
 ASSESSMENT  
 FIGURE 4  
 Wenatchee River - Beaver Valley Rd (Site 3)

**Gray & Osborne, Inc.**  
 CONSULTING ENGINEERS



**CHELAN COUNTY PUBLIC WORKS  
RECREATION ACCESS INVENTORY AND  
ASSESSMENT**

**FIGURE 5**

Nason Creek - Cedar Brae Rd (Site 6)



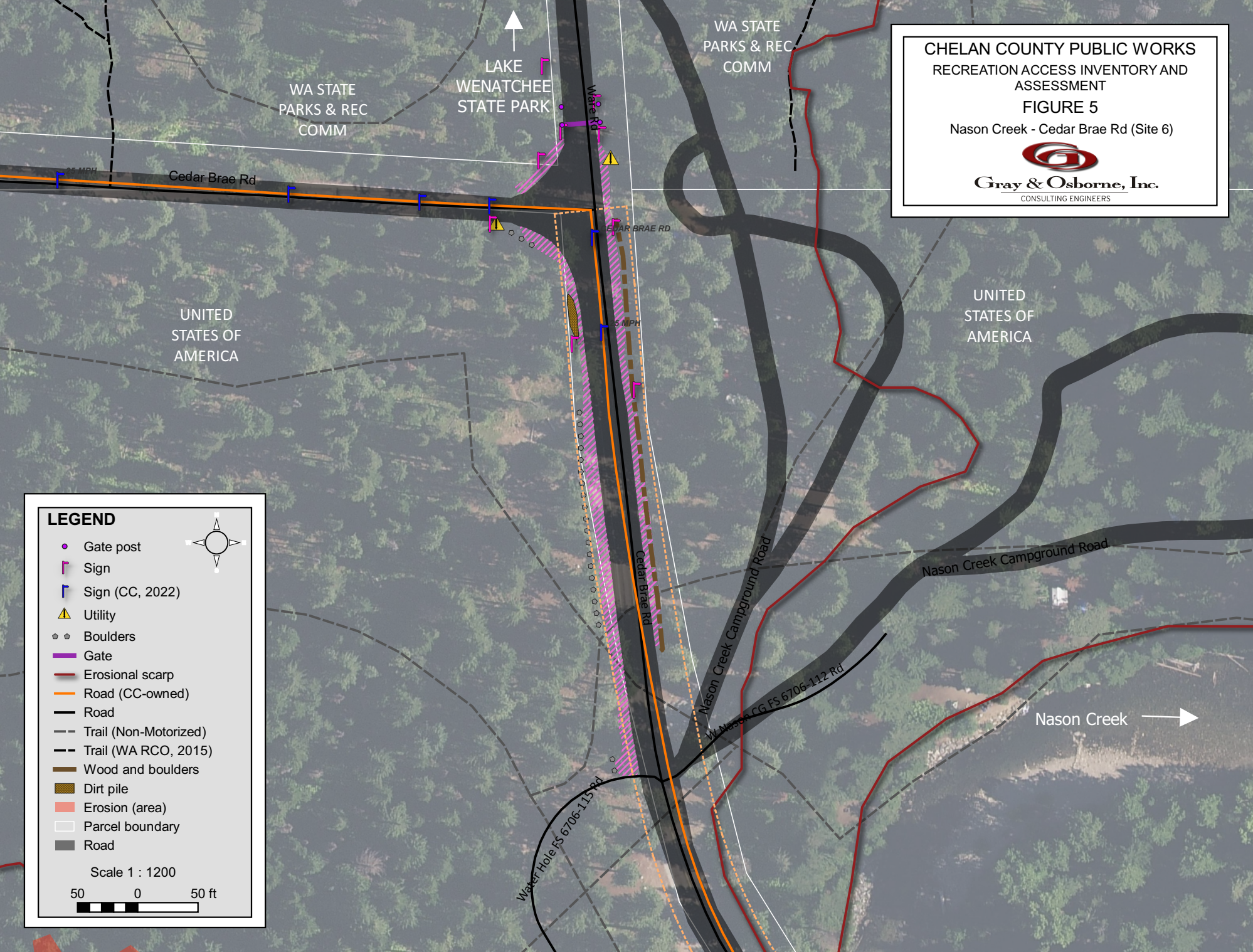
**Gray & Osborne, Inc.**  
CONSULTING ENGINEERS

**LEGEND**

- Gate post
- Sign
- Sign (CC, 2022)
- Utility
- Boulders
- Gate
- Erosional scarp
- Road (CC-owned)
- Road
- Trail (Non-Motorized)
- Trail (WA RCO, 2015)
- Wood and boulders
- Dirt pile
- Erosion (area)
- Parcel boundary
- Road

Scale 1 : 1200

50 0 50 ft



WA STATE  
PARKS & REC  
COMM

LAKE  
WENATCHEE  
STATE PARK

WA STATE  
PARKS & REC  
COMM

UNITED  
STATES OF  
AMERICA

UNITED  
STATES OF  
AMERICA

Water Hole FS 6706-115 Rd

Nason Creek Campground Road

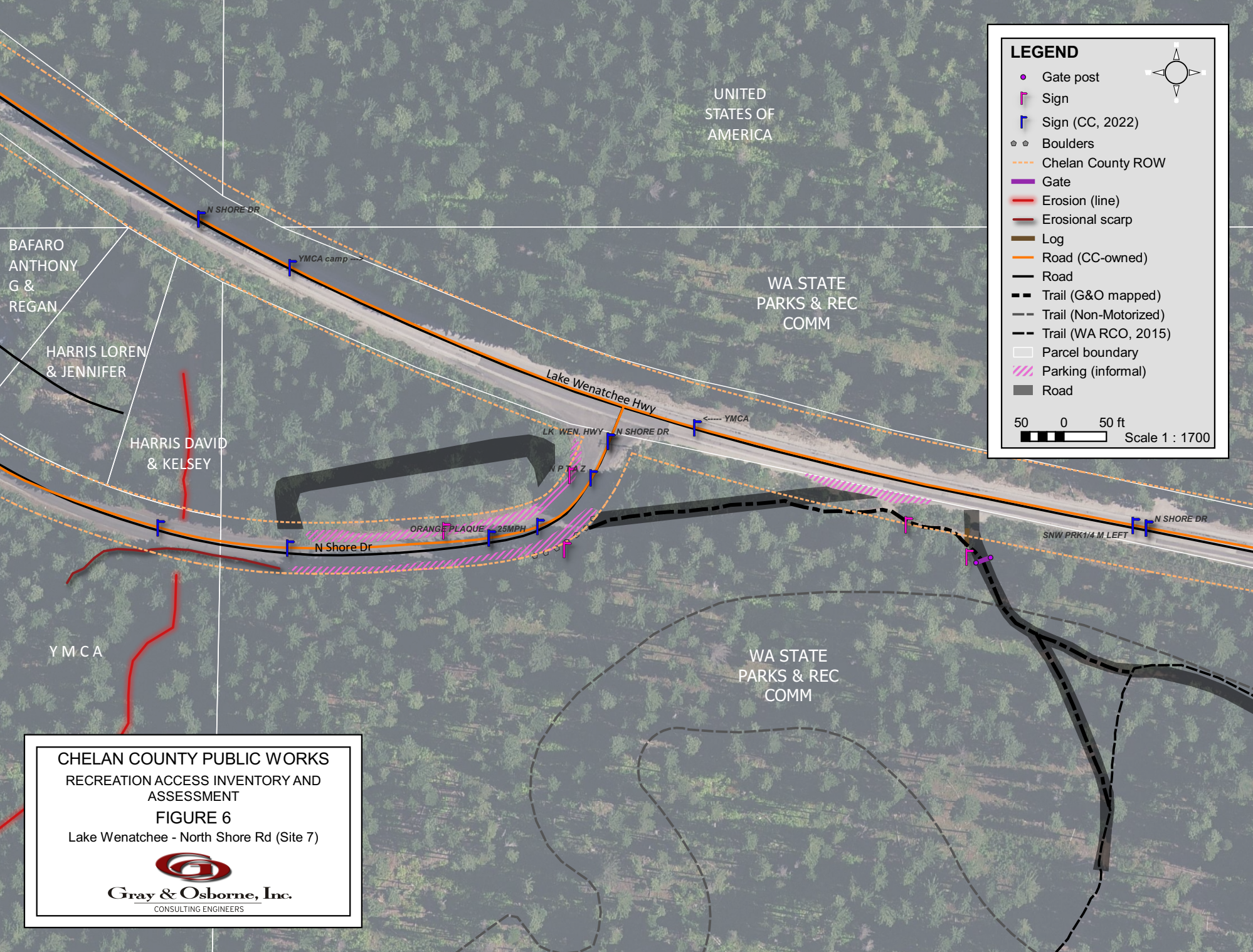
Nason Creek Campground Road

W Nason CG FS 6706-112 Rd

Nason Creek



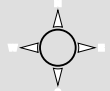




UNITED STATES OF AMERICA

**LEGEND**

- Gate post
- ┌ Sign
- ┌ Sign (CC, 2022)
- ● Boulders
- - - Chelan County ROW
- █ Gate
- █ Erosion (line)
- █ Erosional scarp
- █ Log
- █ Road (CC-owned)
- █ Road
- █ Trail (G&O mapped)
- █ Trail (Non-Motorized)
- █ Trail (WA RCO, 2015)
- ▭ Parcel boundary
- ▨ Parking (informal)
- █ Road



50 0 50 ft  
 Scale 1 : 1700

**CHELAN COUNTY PUBLIC WORKS  
 RECREATION ACCESS INVENTORY AND  
 ASSESSMENT**

**FIGURE 6**

Lake Wenatchee - North Shore Rd (Site 7)



BAFARO ANTHONY G & REGAN

HARRIS LOREN & JENNIFER

HARRIS DAVID & KELSEY

YMCA

WA STATE PARKS & REC COMM

WA STATE PARKS & REC COMM

N SHORE DR

YMCA camp

Lake Wenatchee Hwy

LK. WEN. HWY N SHORE DR

N PLAZ

N Shore Dr

ORANGE PLAQUE 25MPH

SNW PRK 1/4 M LEFT

N SHORE DR