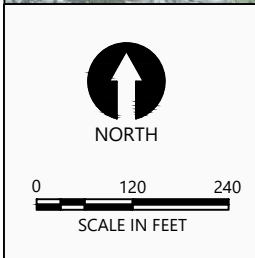
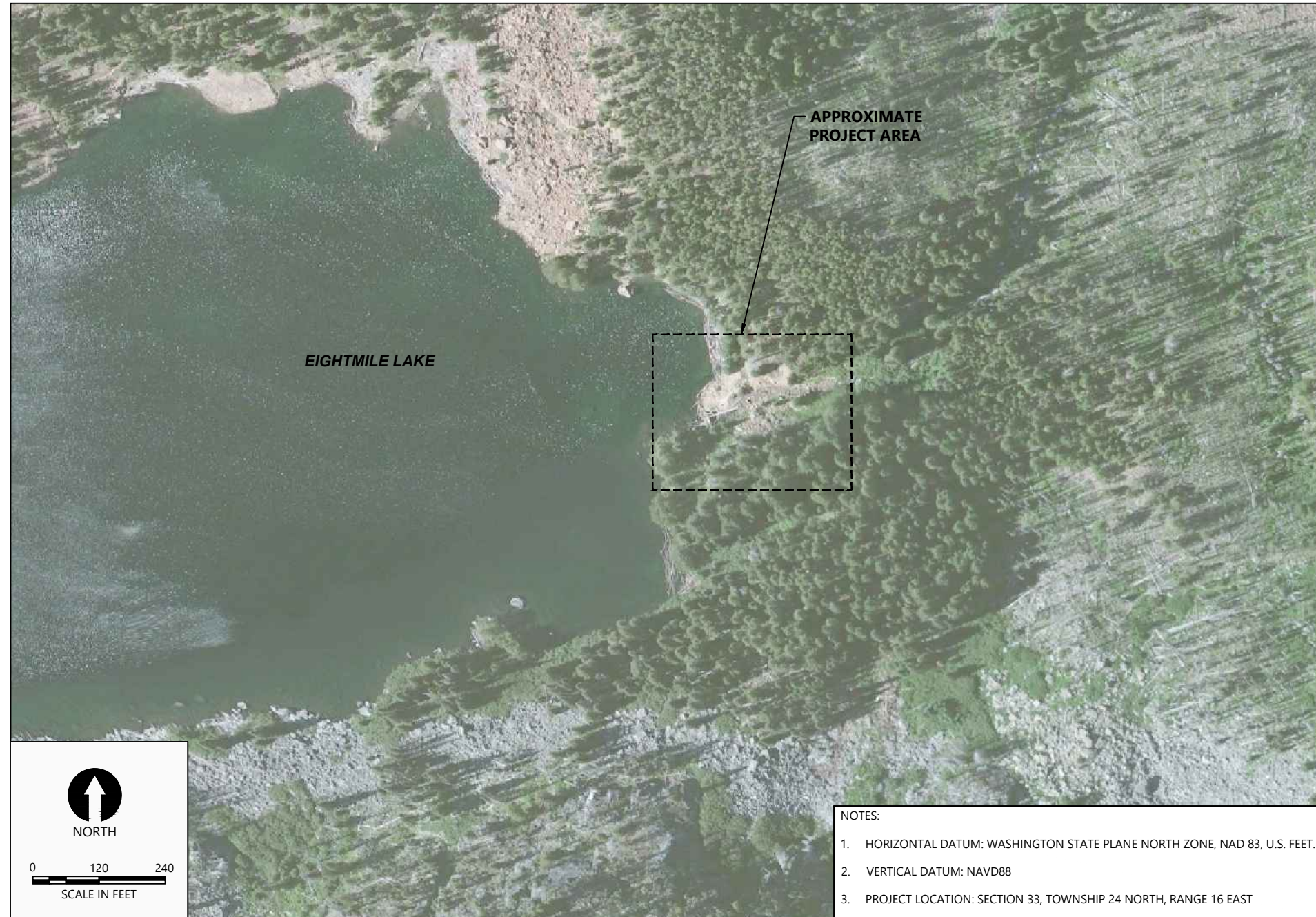


30% DESIGN SUBMITTAL EIGHTMILE LAKE STORAGE RESTORATION

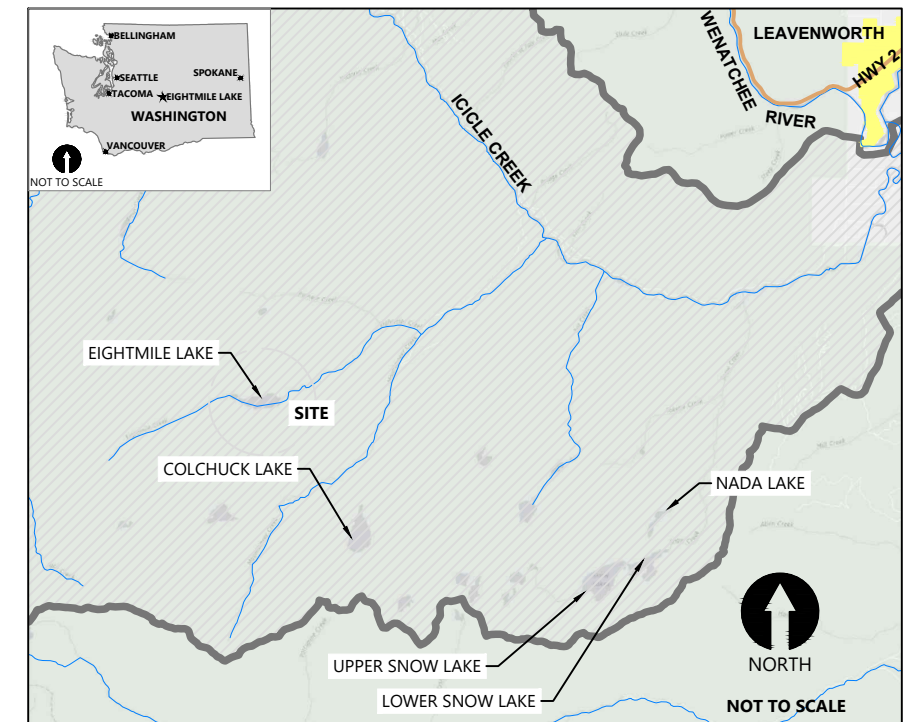
ICICLE AND PESHASTIN IRRIGATION DISTRICTS



- NOTES:
- HORIZONTAL DATUM: WASHINGTON STATE PLANE NORTH ZONE, NAD 83, U.S. FEET.
 - VERTICAL DATUM: NAVD88
 - PROJECT LOCATION: SECTION 33, TOWNSHIP 24 NORTH, RANGE 16 EAST

DRAWING INDEX		
SHT #	DWG #	TITLE
1	G1	COVER SHEET
2	G2	GENERAL NOTES, LEGEND, AND ABBREVIATIONS
3	G3	OVERALL SITE PLAN
4	G4	EXISTING CONDITIONS PLAN
5	T1	CONSTRUCTION ACCESS PLAN
6	D1	DEMOLITION PLAN
7	C1	RESTORATION PLAN
8	C2	EMBANKMENT PLAN
9	C3	EMBANKMENT PROFILES
10	C4	EMBANKMENT SECTIONS (1 OF 3)
11	C5	EMBANKMENT SECTIONS (2 OF 3)
12	C6	EMBANKMENT SECTIONS (3 OF 3)
13	C7	LOW-LEVEL OUTLET PLAN
14	C8	LOW-LEVEL OUTLET PROFILE
15	C9	DETAILS

- NOTES:
- STRUCTURAL DESIGN DRAWINGS AND ADDITIONAL DETAIL DRAWINGS WILL BE ADDED DURING FUTURE PHASES OF DESIGN.



PLAN INTENDED TO BE VIEWED IN COLOR. ADJACENT BLOCK IS "BLUE"
ONE INCH AT FULL SIZE IF NOT ONE INCH SCALE ACCORDINGLY

30% DESIGN-NOT FOR CONSTRUCTION

K:\Projects\1810-Peshastin Irrigation District\Eightmile Lake Final Design\Construction Plans\1810-PL-Cover.dwg 1 G1 Jul 10, 2019 2:02pm adice



ICICLE AND PESHASTIN IRRIGATION DISTRICTS

REVISIONS				
REV	DATE	BY	APP'D	DESCRIPTION

DESIGNED BY: J. SEXTON
 DRAWN BY: T. GRIGA
 CHECKED BY: D. RICE
 APPROVED BY: R. MONTGOMERY
 SCALE: AS NOTED
 DATE: JULY 2019

EIGHTMILE LAKE STORAGE RESTORATION

COVER SHEET

G1

SHEET # 1 OF 15

- LEGEND:**
- EXISTING MAJOR CONTOUR (5' INTERVAL)
 - EXISTING MINOR CONTOUR (1' INTERVAL)
 - PROPOSED MAJOR CONTOUR (5' INTERVAL)
 - PROPOSED MINOR CONTOUR (1' INTERVAL)

PROJECT INFORMATION:

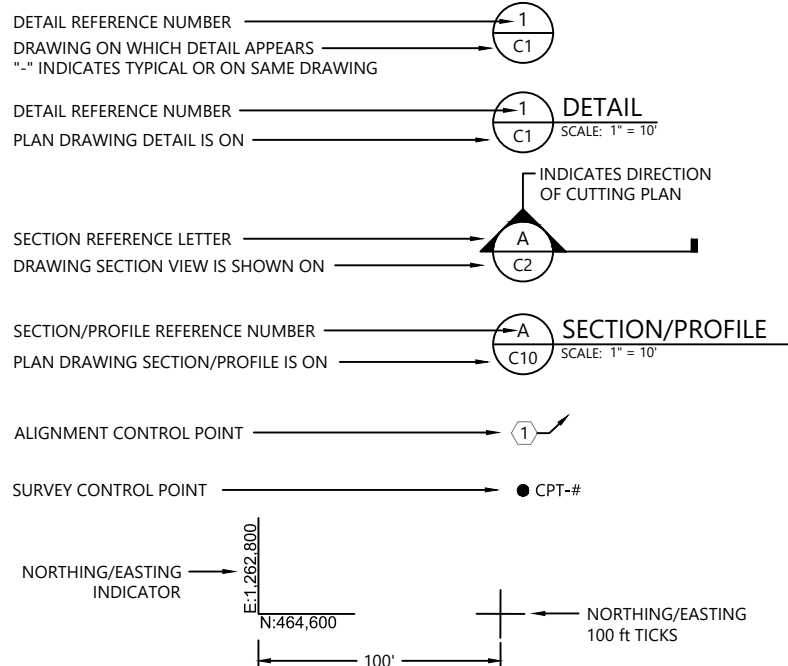
OWNER: TONY JANTZER, MANAGER
 ICICLE AND PESHASTIN IRRIGATION DISTRICTS
 P.O. BOX 371
 5594 WESCOTT DRIVE
 CASHMERE, WA 98815-0371
 (509) 782-2561

ENGINEER: DAVID RICE, P.E.
 ANCHOR QEA, LLC
 1201 3RD AVE, SUITE 2600
 SEATTLE, WA 98101
 (206) 219-5902

SURVEY NOTES:

1. HORIZONTAL DATUM: WASHINGTON STATE PLANE NORTH ZONE, NAD 83, U.S. FEET
2. VERTICAL DATUM: NAVD88
3. SOURCES OF DATA:
 - a. AERIAL PHOTOGRAPHY: ESRI BASEMAPS DATED 2016.
 - b. BATHYMETRY: GRAVITY CONSULTANTS HYDROGRAPHIC SURVEY, OCTOBER 2013
 - c. TOPOGRAPHIC SURVEY: COMPLETED AT DAM, EMBANKMENT, AND DOWNSTREAM CHANNEL LOCATIONS, JULY 2018, BY PACIFIC GEOMATIC SERVICES, INC., EXTENTS INDICATED ON PLAN SHEETS.
 - d. LIDAR TOPOGRAPHY: LIDAR FLOWN FOR AREA SURROUNDING EIGHTMILE LAKE, JULY 2018, BY GEOTERRA
 - e. AERIAL IMAGERY: AERIAL IMAGERY FOR AREA SURROUNDING EIGHTMILE LAKE, JULY 2018, BY GEOTERRA

SYMBOLS:



GENERAL CONSTRUCTION NOTES:

1. CONTRACT DOCUMENTS REFER TO THESE DRAWINGS AND THE PROJECT SPECIFICATIONS. ALL COMPONENTS OF THE CONTRACT DOCUMENTS SHALL FULLY APPLY TO THE WORK WHETHER SPECIFICALLY REFERENCED ON THE DRAWINGS OR NOT. ANY ITEMS NOT SPECIFICALLY REFERENCED IN THE NOTES ON THE DRAWINGS SHALL BE AS DESCRIBED IN THE SPECIFICATIONS.
2. THE CONTRACTOR SHALL HAVE A COPY OF THE APPROVED CONTRACT DOCUMENTS ON THE JOBSITE AT ALL TIMES.
3. THE CONTRACTOR SHALL FURNISH ALL MATERIALS, EQUIPMENT, AND LABOR NECESSARY TO COMPLETE ALL WORK AS INDICATED ON THE CONTRACT DOCUMENTS.
4. A PRE-CONSTRUCTION MEETING BETWEEN THE CONTRACTOR, IPID, AND THE CONTRACTING OFFICER'S REPRESENTATIVE (COR) SHALL BE REQUIRED PRIOR TO ANY ON-SITE WORK. SEE SPECIFICATIONS FOR ADDITIONAL REQUIREMENTS.
5. THE CONTRACTOR SHALL VISIT THE JOB SITE PRIOR TO CONSTRUCTION AND SHALL BE RESPONSIBLE FOR VERIFYING FIELD CONDITIONS AND DIMENSIONS, DEVELOPING A PLAN TO MOBILIZE EQUIPMENT AND MATERIALS NEEDED TO THE SITE TO COMPLETE THE WORK, AND CONFIRMING THAT THE WORK CAN BE ACCOMPLISHED AS SHOWN ON THESE CONTRACT DOCUMENTS. ANY DISCREPANCIES BETWEEN THE EXISTING FIELD CONDITIONS AND THE DRAWINGS OR ANY INCONSISTENCIES OR AMBIGUITIES BETWEEN THE DRAWINGS AND OTHER CONTRACT DOCUMENTS SHALL BE REPORTED IN WRITING TO THE COR PRIOR TO PROCEEDING WITH THE WORK. WORK DONE BY THE CONTRACTOR INVOLVING SUCH DISCREPANCIES WITHOUT A WRITTEN REPORT AND RESPONSE FROM THE COR SHALL BE DONE AT THE CONTRACTOR'S SOLE RISK AND EXPENSE.
6. THE CONTRACTOR SHALL RECEIVE, IN WRITING, AUTHORIZATION TO PROCEED BEFORE STARTING WORK ON ANY ITEM NOT CLEARLY DEFINED OR IDENTIFIED BY THE CONTRACT DOCUMENTS.
7. THE CONTRACTOR SHALL ASSUME SOLE AND COMPLETE RESPONSIBILITY FOR JOB SITE CONDITIONS DURING THE COURSE OF CONSTRUCTION, INCLUDING THE SAFETY OF ALL PERSONS AND PROPERTY. THIS REQUIREMENT SHALL APPLY CONTINUOUSLY AND IS NOT LIMITED TO NORMAL WORKING HOURS.
8. THE CONTRACTOR SHALL BE SOLELY RESPONSIBLE FOR ALL CONSTRUCTION MEANS, METHODS, TECHNIQUES, SEQUENCES, AND PROCEDURES AND FOR COORDINATING ALL PORTIONS OF THE WORK UNDER THIS CONTRACT.
9. THE CONTRACTOR SHALL INSTALL ALL EQUIPMENT AND MATERIALS IN ACCORDANCE WITH MANUFACTURER'S RECOMMENDATIONS UNLESS SPECIFICALLY INDICATED OTHERWISE IN THE CONTRACT DOCUMENTS, FIELD DIRECTED BY THE CONTRACTING OFFICER, OR WHERE LOCAL CODES OR REGULATIONS TAKE PRECEDENCE. ALL WORK SHALL BE IN STRICT ACCORDANCE WITH APPLICABLE PERMIT REQUIREMENTS, CODES, REGULATIONS, AND ORDINANCES.
10. THE DETAILS PROVIDED ON THE CONTRACT DOCUMENTS ARE INTENDED TO SHOW THE FINAL RESULT OF THE DESIGN. MINOR MODIFICATIONS MAY BE REQUIRED TO SUIT JOB SITE DIMENSIONS OR CONDITIONS. SUCH MODIFICATIONS SHALL BE INCLUDED AS PART OF THE WORK.
11. THE CONTRACTOR SHALL MAKE ALL NECESSARY PROVISIONS TO PROTECT EXISTING STRUCTURES, IMPROVEMENTS, FENCES, GATES, ROADWAYS, DRAINAGE WAYS, CULVERTS, AND VEGETATION UNTIL SUCH ITEMS ARE TO BE DISTURBED OR REMOVED AS INDICATED ON THE CONTRACT DOCUMENTS. IF SUCH ITEMS ARE DAMAGED OR NEED TO BE REMOVED OR MODIFIED TO FACILITATE CONSTRUCTION, THE CONTRACTOR SHALL FIRST NOTIFY THE COR AND THEN REPLACE OR REPAIR THE ITEMS TO EQUAL OR BETTER CONDITION AT THE CONTRACTOR'S EXPENSE AND TO THE SATISFACTION OF THE COR.
12. THE CONTRACTOR SHALL KEEP THE JOB SITE AREA CLEAN AND FREE FROM HAZARDS. THE CONTRACTOR SHALL DISPOSE OF ALL DIRT, DEBRIS, AND RUBBISH FOR THE DURATION OF THE WORK. UPON COMPLETION, THE CONTRACTOR SHALL REMOVE ALL MATERIAL AND EQUIPMENT NOT SPECIFIED TO REMAIN ON THE PROPERTY. SEE THE SPECIFICATIONS FOR ADDITIONAL REQUIREMENTS.
13. REPRESENTATIONS OF TRUE NORTH SHALL NOT BE USED TO IDENTIFY OR ESTABLISH THE BEARING OF TRUE NORTH AT THE JOB SITE.
14. WHERE A CONSTRUCTION DETAIL IS NOT SHOWN OR NOTED, THE DETAIL SHALL BE THE SAME AS FOR OTHER SIMILAR WORK.

GENERAL CONSTRUCTION NOTES: (CONTINUED)

15. THE NOTES, DETAILS AND SPECIFICATIONS ON THE CONTRACT DOCUMENTS SHALL TAKE PRECEDENCE OVER THESE GENERAL NOTES.
16. DIMENSION CALL-OUTS SHALL TAKE PRECEDENCE OVER SCALES SHOWN ON THE CONTRACT DOCUMENTS.
17. STATIONING, DISTANCES, AND LENGTHS SHOWN ON THE DRAWINGS ARE BASED ON HORIZONTAL MEASUREMENTS.
18. THE CONTRACTOR SHALL BE REQUIRED TO CONTROL ON-SITE STORM WATER RUNOFF BY USING TEMPORARY OR PERMANENT DRAINAGE EROSION/SILTATION CONTROL PROCEDURES, AS INDICATED ON THE CONTRACT DOCUMENTS.
19. THE CONTRACTOR SHALL MAINTAIN HAND DRAWN REDLINES, FIELD NOTES AND PHOTOGRAPHS ("FIELD DOCUMENTATION") OF ALL IMPROVEMENTS AS THE WORK PROGRESSES. THE CONTRACTOR SHALL ALSO TAKE PHOTOGRAPHS AND VIDEO TO DOCUMENT CONDITIONS PRIOR TO CONSTRUCTION. THE CONTRACTOR'S FIELD DOCUMENTATION SHALL BE MAINTAINED ON SITE AND SHALL BE AVAILABLE FOR REVIEW BY THE CONTRACTING OFFICER AT ALL TIMES. THE CONTRACTOR SHALL PROVIDE FIELD DOCUMENTATION TO THE COR FOR THE PREPARATION OF CERTIFIED RECORD DRAWINGS PRIOR TO PROJECT ACCEPTANCE.

GENERAL CIVIL CONSTRUCTION NOTES:

1. ALL SITE WORK SHALL BE AS INDICATED ON THE CONTRACT DOCUMENTS. DO NOT EXCAVATE AND DISTURB BEYOND THE CLEARING LIMITS SHOWN ON THE CONTRACT DOCUMENTS UNLESS OTHERWISE APPROVED BY THE COR.
2. DEBRIS AND GARBAGE SHALL BE REMOVED FROM THE JOB SITE AND DISPOSED OF LEGALLY, AS REQUIRED BY THE PROJECT SPECIFICATIONS.
3. THE AREAS OF THE JOB SITE DISTURBED BY THE WORK SHALL BE GRADED SMOOTH AND PROTECTED AND/OR REVEGETATED AS SPECIFIED HEREIN.
4. PIPE MATERIALS SHALL BE AS INDICATED ON THE CONTRACT DOCUMENTS.
5. ALL EQUIPMENT AND MATERIALS NOT INDICATED ON THE DRAWINGS TO COME FROM THE SITE SHALL BE NEW AND UNDAMAGED, UNLESS OTHERWISE APPROVED BY THE COR AND THE ENGINEER. THE SAME MANUFACTURER OF EACH ITEM SHALL BE USED THROUGHOUT THE WORK UNLESS OTHERWISE APPROVED BY THE COR AND THE ENGINEER.

ABBREVIATIONS:

'	FEET, MINUTES
"	INCHES, SECONDS
°	DEGREES
∅	DIAMETER
#	NUMBER
AASHTO	AMERICAN ASSOCIATION OF STATE HIGHWAY AND TRANSPORTATION OFFICES
APWA	AMERICAN PUBLIC WORKS ASSOCIATION
ASSY	ASSEMBLY
ASTM	AMERICAN SOCIETY FOR TESTING AND MATERIALS
BM	BENCHMARK
CFS	CUBIC FEET PER SECOND
CL	CENTERLINE
CMP	CORRUGATED METAL PIPE
CONC	CONCRETE
CONT	CONTINUED OR CONTINUOUS
COR	CONTRACTING OFFICER'S REPRESENTATIVE
CP	CONTROL POINT (AS IN SURVEY)
CPE	CORRUGATED POLYETHYLENE
CPLG	COUPLING
CSBC	CRUSHED SURFACING BASE COURSE
CSTC	CRUSHED SURFACING TOP COURSE
CY	CUBIC YARDS
DI	DUCTILE IRON
DIA	DIAMETER
DWG	DRAWING
E	EAST, EASTING
ELEV	ELEVATION
EX	EXISTING
FG	FINISHED GRADE
FL	FLOW LINE, FLANGE
FPS	FEET PER SECOND
GALV	GALVANIZED
GPM	GALLONS PER MINUTE
HPDE	HIGH-DENSITY POLYETHYLENE
HOR	HORIZONTAL
ID	INSIDE DIAMETER
IE	INVERT ELEVATION
IPID	ICICLE AND PESHASTIN AND IRRIGATION DISTRICTS
L	LENGTH
LF	LINEAR FEET
MAX	MAXIMUM
MIN	MINIMUM
N	NORTH, NORTHING
NAD	NORTH AMERICAN DATUM
NAVD	NORTH AMERICAN VERTICAL DATUM
OC	ON CENTERS
OD	OUTSIDE DIAMETER
P	POWER
P.E.	PROFESSIONAL ENGINEER
R, RAD	RADIUS
REINF	REINFORCED, REINFORCEMENT
S	SLOPE, SOUTH
SF	SQUARE FOOT OR FEET
SPEC	SPECIFICATION
STA	STATION
SY	SQUARE YARD
TESC	TEMPORARY EROSION AND SEDIMENT CONTROL
TOW	TOP OF WALL
TYP	TYPICAL
W	WEST, WATER
W/	WITH
WSDOT	WASHINGTON STATE DEPARTMENT OF TRANSPORTATION
WSL	WATER SURFACE ELEVATION
YR	YEAR

30% DESIGN-NOT FOR CONSTRUCTION



ICICLE AND PESHASTIN IRRIGATION DISTRICTS

REVISIONS				
REV	DATE	BY	APP'D	DESCRIPTION

DESIGNED BY: J. SEXTON
 DRAWN BY: T. GRIGA
 CHECKED BY: D. RICE
 APPROVED BY: R. MONTGOMERY
 SCALE: AS NOTED
 DATE: JULY 2019

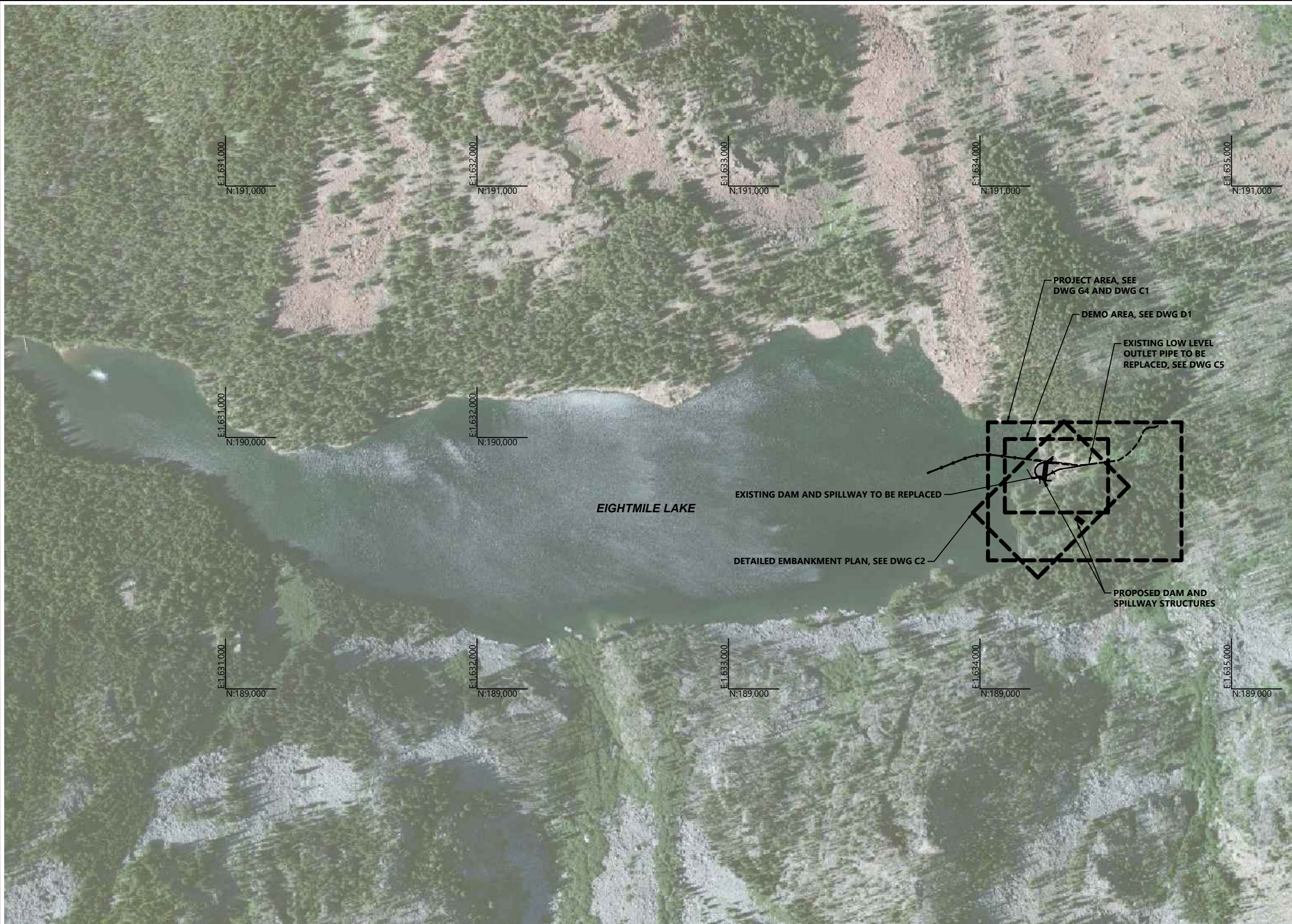
EIGHTMILE LAKE STORAGE RESTORATION

GENERAL NOTES, LEGEND, AND ABBREVIATIONS

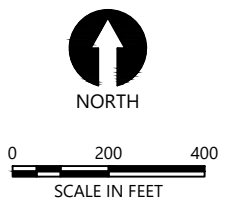
G2

SHEET # **2** OF **15**

K:\Projects\1810-Peshastin Irrigation District\Eightmile Lake Final Design\Construction Plans\1810-PL-Existing.dwg 3.G3
Jul 10, 2019 2:02pm drc



LEGEND:
 SHEET EXTENTS



- NOTES:
1. HORIZONTAL DATUM: WASHINGTON STATE PLANE NORTH ZONE, NAD 83, U.S. FEET.
 2. FOR ADDITIONAL SURVEY NOTES, SEE DRAWING G2.
 3. AERIAL PHOTOGRAPHY: ESRI BASE MAPS, 2015.

30% DESIGN-NOT FOR CONSTRUCTION

PLAN INTENDED TO BE VIEWED IN COLOR. ADJACENT BLOCK IS "BLUE"

 ONE INCH AT FULL SIZE IF NOT ONE INCH SCALE ACCORDINGLY



ICICLE AND PESHAstin IRRIGATION DISTRICTS

REVISIONS				
REV	DATE	BY	APP'D	DESCRIPTION

DESIGNED BY: J. SEXTON
 DRAWN BY: T. GRIGA
 CHECKED BY: D. RICE
 APPROVED BY: R. MONTGOMERY
 SCALE: AS NOTED
 DATE: JULY 2019

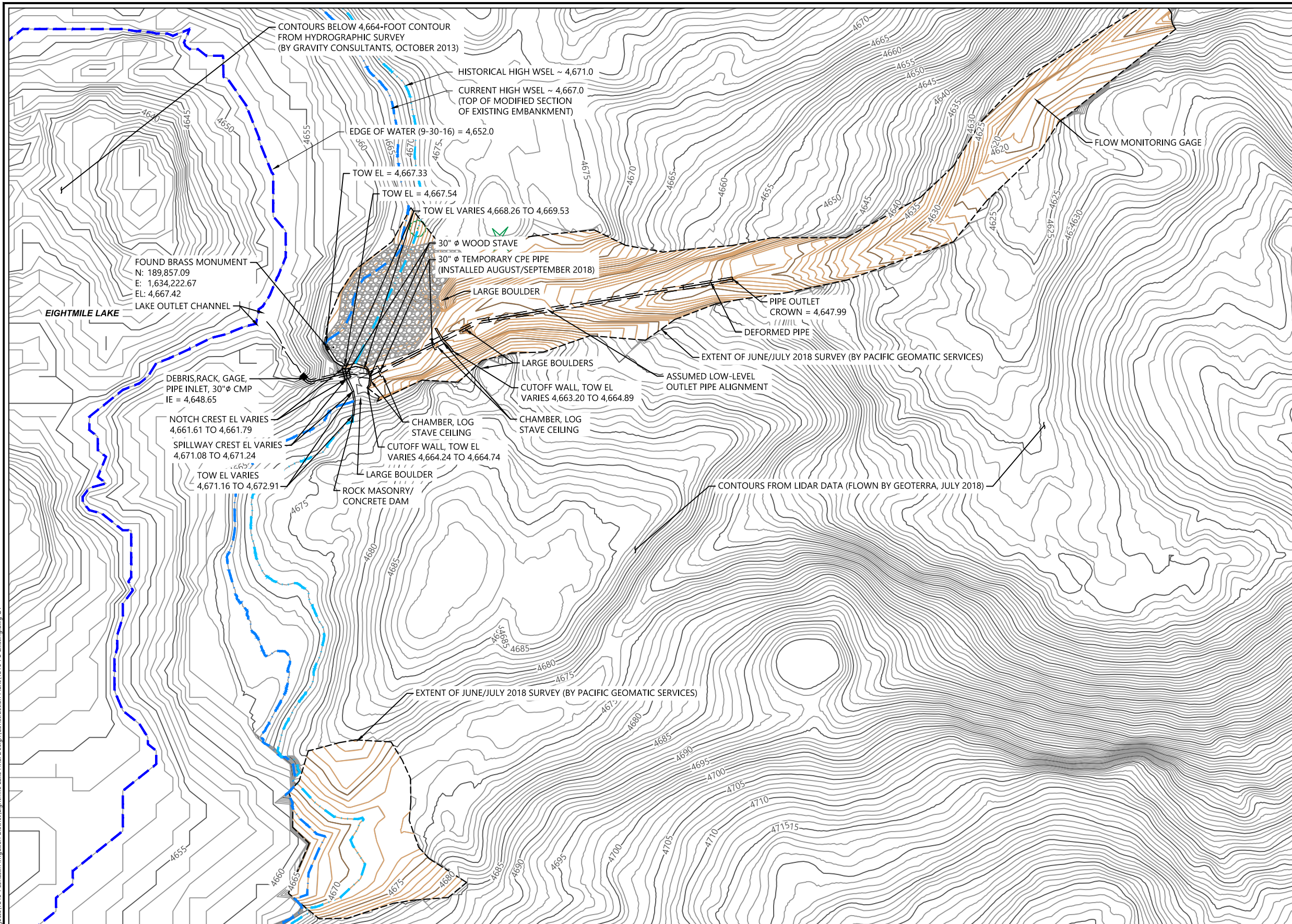
EIGHTMILE LAKE STORAGE RESTORATION

OVERALL SITE PLAN

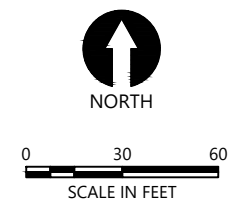
G3

SHEET # **3** OF **15**

K:\Projects\1810-Peshastin Irrigation District\Eightmile Lake Final Design\Construction Plans\1810-PL-Existing.dwg C4
Jul 10, 2019 2:02pm adice



- LEGEND:**
- PRIOR BATHYMETRIC SURVEY AND LIDAR DATA:
- 4570— MAJOR CONTOUR (5')
 - MINOR CONTOUR (1')
- 2018 SURVEY TOPOGRAPHY:
- 4570— MAJOR CONTOUR (5')
 - MIN CONTOUR (1')
 - LIMIT SURVEYED TOPOGRAPHY
- OTHER FEATURES:
- ▭ PARCEL BOUNDARY (FROM COUNTY GIS)
 - == EXISTING PIPE (BURIED)
 - - - - EDGE OF WATER
 - ▨ RIP-RAP (PLACED MAY 2018)
- ABBREVIATIONS:
- EL ELEVATION
 - IE INVERT ELEVATION
 - TOW TOP OF WALL
 - WSEL WATER SURFACE ELEVATION



- NOTES:
- HORIZONTAL DATUM: WASHINGTON STATE PLANE NORTH ZONE, NAD 83, U.S. FEET.
 - VERTICAL DATUM: NAVD88

30% DESIGN-NOT FOR CONSTRUCTION

PLAN INTENDED TO BE VIEWED IN COLOR. ADJACENT BLOCK IS "BLUE" INCH SCALE ACCORDINGLY



ICICLE AND PESHAstin IRRIGATION DISTRICTS

REVISIONS				
REV	DATE	BY	APP'D	DESCRIPTION

DESIGNED BY: J. SEXTON
 DRAWN BY: T. GRIGA
 CHECKED BY: D. RICE
 APPROVED BY: R. MONTGOMERY
 SCALE: AS NOTED
 DATE: JULY 2019

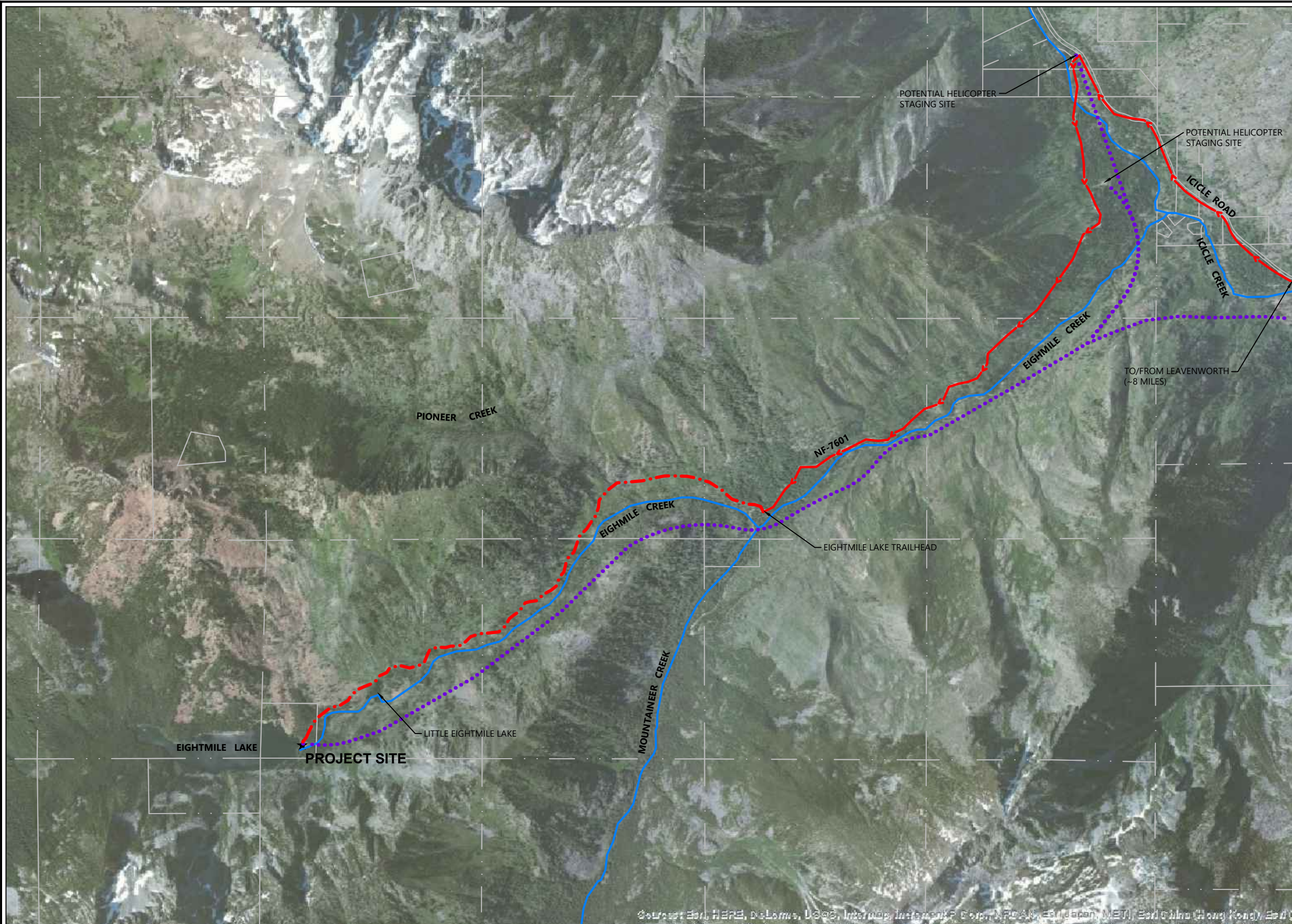
EIGHTMILE LAKE STORAGE RESTORATION

EXISTING CONDITIONS PLAN

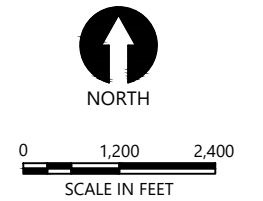
G4

SHEET # **4** OF **15**

K:\Projects\1810-Peshastin Irrigation District\Eightmile Lake Final Design\Construction Plans\1810-PL-Access.dwg 5 T1
Jul 10, 2019 2:02pm drc



- LEGEND:
- CREEK
 - PUBLIC ROADWAYS
 - - - FOOT ACCESS
 - · · HELICOPTER ACCESS
 - PARCEL BOUNDARIES (FROM COUNTY GIS)



- NOTES:
1. HORIZONTAL DATUM: WASHINGTON STATE PLANE NORTH ZONE, NAD 83, U.S. FEET.
 2. FOR ADDITIONAL SURVEY NOTES, SEE DRAWING G2.

30% DESIGN-NOT FOR CONSTRUCTION

PLAN INTENDED TO BE VIEWED AT FULL SIZE IF NOT ONE INCH SCALE ACCORDINGLY



ICICLE AND PESHAstin IRRIGATION DISTRICTS

REVISIONS				
REV	DATE	BY	APP'D	DESCRIPTION

DESIGNED BY: J. SEXTON
 DRAWN BY: T. GRIGA
 CHECKED BY: D. RICE
 APPROVED BY: R. MONTGOMERY
 SCALE: AS NOTED
 DATE: JULY 2019

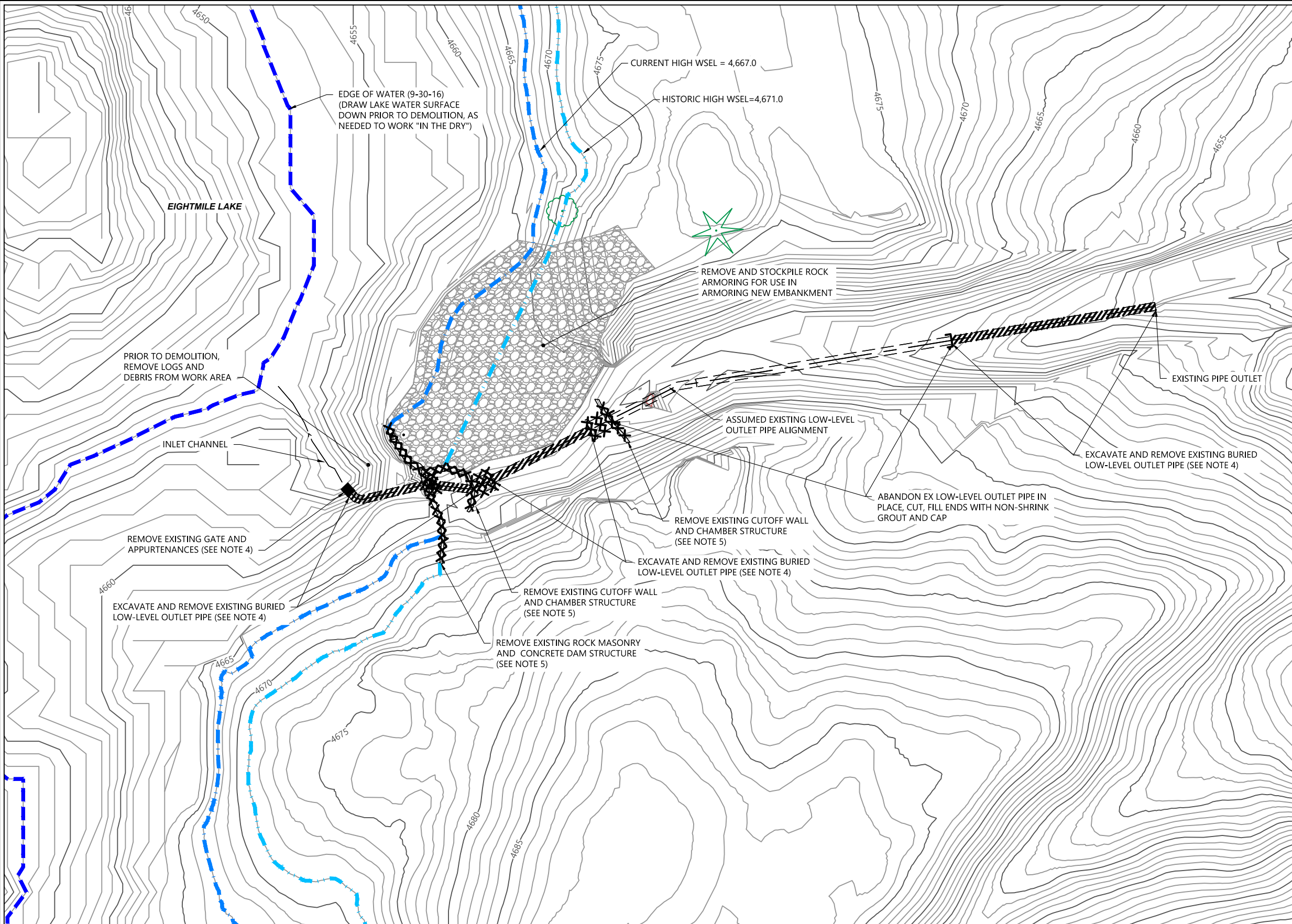
EIGHTMILE LAKE STORAGE RESTORATION

CONSTRUCTION ACCESS PLAN

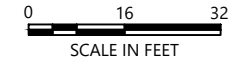
T1

SHEET # **5** OF **15**

K:\Projects\1810-Peshastin Irrigation District\Eightmile Lake Final Design\Construction Plans\1810-PL-Existing.dwg 6.D1
Jul 10, 2019 2:03pm drc



- LEGEND:
- 4570— MAJOR CONTOUR (10')
 - MINOR CONTOUR (2')
 - //// REMOVE PIPE
 - XXXX REMOVE STRUCTURE
 - X REMOVE EQUIPMENT



- NOTES:
1. HORIZONTAL DATUM: WASHINGTON STATE PLANE NORTH ZONE, NAD 83, U.S. FEET.
 2. VERTICAL DATUM: NAVD88
 3. FOR ADDITIONAL SURVEY NOTES, SEE DWG. G-02.
 4. PIPE, GATE, AND OTHER EQUIPMENT SHALL BE FULLY REMOVED, HAULED FROM THE SITE BY HELICOPTER OR OTHER APPROVED METHOD, AND DISPOSED OF AS REQUIRED BY SPECIFICATIONS.
 5. EXISTING ROCK MASONRY AND CONCRETE STRUCTURES SHALL BE BROKEN DOWN, STOCKPILED, AND REUSED, IF POSSIBLE, AS PART OF NEW DAM AND SPILLWAY CONSTRUCTION. IF NOT REUSED, CONCRETE AND REINFORCEMENT SHALL BE HAULED FROM THE SITE BY HELICOPTER AND DISPOSED OF, AS REQUIRED BY THE SPECIFICATIONS.

30% DESIGN-NOT FOR CONSTRUCTION

PLAN INTENDED TO BE VIEWED IN COLOR. ADJACENT BLOCK IS "BLUE"
ONE INCH AT FULL SIZE IF NOT ONE INCH SCALE ACCORDINGLY



ICICLE AND PESHAstin IRRIGATION DISTRICTS

REVISIONS				
REV	DATE	BY	APP'D	DESCRIPTION

DESIGNED BY: J. SEXTON
 DRAWN BY: T. GRIGA
 CHECKED BY: D. RICE
 APPROVED BY: R. MONTGOMERY
 SCALE: AS NOTED
 DATE: JULY 2019

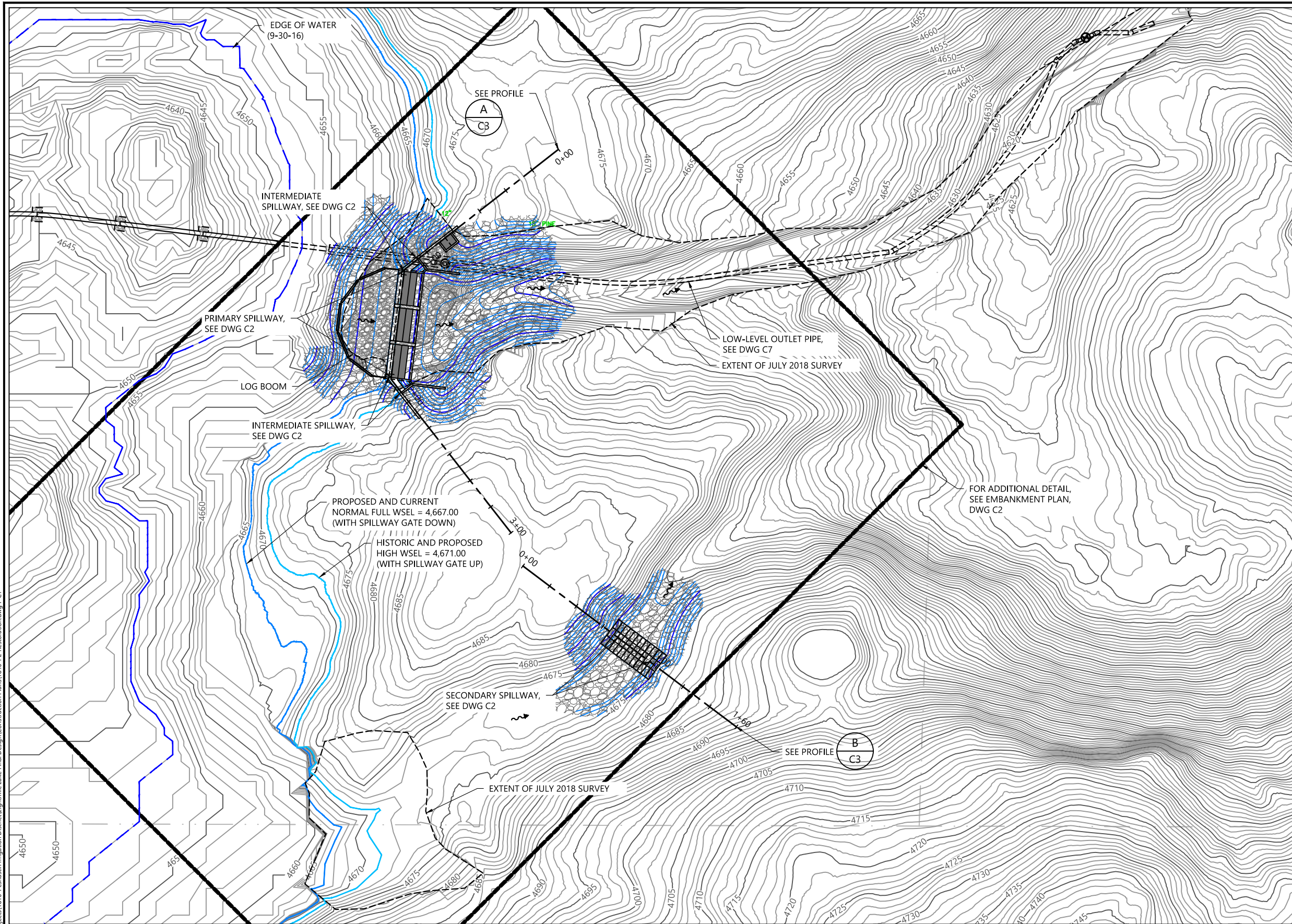
EIGHTMILE LAKE STORAGE RESTORATION

DEMOLITION PLAN

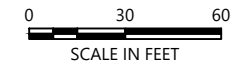
D1

SHEET # **6** OF **15**

K:\Projects\1810-Peshastin Irrigation District\Eightmile Lake Final Design\Construction Plans\1810-PL-Restoration.dwg 7 C1
 Jul 10, 2019 2:03pm edice



- LEGEND:
- 4570— EXISTING MAJOR CONTOUR (5')
 - EXISTING MINOR CONTOUR (1')
 - MAJOR CONTOUR (5' INTERVAL)
 - MINOR CONTOUR (1' INTERVAL)
 - SLOPE ARMORING
 - SPILLWAY GABIONS W/CONCRETE
 - REINFORCED CONCRETE WALL
 - DIRECTION OF SURFACE FLOW
 - PARCEL (FROM CHELAN COUNTY GIS)



- NOTES:
- HORIZONTAL DATUM: WASHINGTON STATE PLANE NORTH ZONE, NAD 83, U.S. FEET.
 - VERTICAL DATUM: NAVD88
 - FOR DETAILED EMBANKMENT PLAN, SEE DRAWING C2.
 - FOR DETAILED LOW-LEVEL OUTLET PLAN, SEE DRAWING C7.

30% DESIGN-NOT FOR CONSTRUCTION

PLAN INTENDED TO BE VIEWED IN COLOR. ADJACENT BLOCK IS "BLUE"
 ONE INCH AT FULL SIZE IF NOT ONE INCH SCALE ACCORDINGLY



ICICLE AND PESHAstin IRRIGATION DISTRICTS

REVISIONS				
REV	DATE	BY	APP'D	DESCRIPTION

DESIGNED BY: J. SEXTON
 DRAWN BY: T. GRIGA
 CHECKED BY: D. RICE
 APPROVED BY: R. MONTGOMERY
 SCALE: AS NOTED
 DATE: JULY 2019

EIGHTMILE LAKE STORAGE RESTORATION

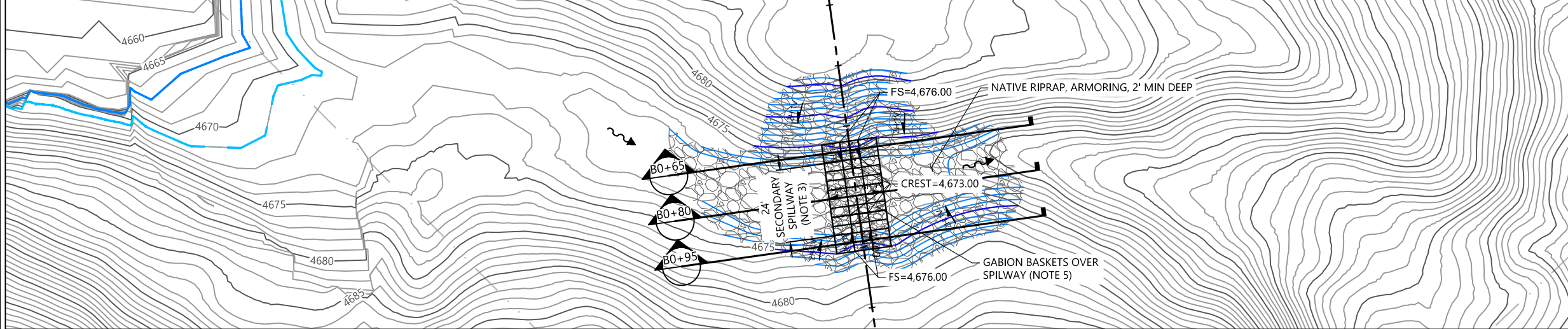
RESTORATION PLAN

C1

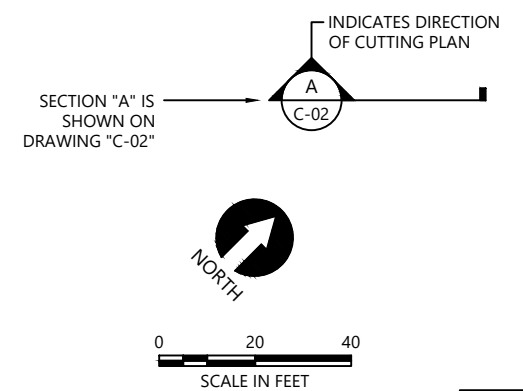
SHEET # 7 OF 15

NOTES:

1. PRIMARY SPILLWAY
 - 1.1. THREE (3) 20-FOOT WIDE GATED SPILLWAY OPENINGS
 - 1.2. TOTAL WIDTH = 60 FEET
 - 1.3. HARD CREST ELEVATION = 4,667.00 FEET
2. INTERMEDIATE SPILLWAY
 - 2.1. TWO (2) 10-FOOT WIDE SPILLWAY CRESTS
 - 2.2. TOTAL WIDTH = 20 FEET
 - 2.3. HARD CREST ELEVATION = 4,671.50 FEET
3. SECONDARY SPILLWAY
 - 3.1. HARDENED CREST OF NATURAL CHANNEL SOUTH OF MAIN DAM STRUCTURE
 - 3.2. TOTAL WIDTH = 24 FEET
 - 3.3. HARD CREST ELEVATION = 4,673.00 FEET
4. PRIMARY SPILLWAY GATE
 - 4.1. 20-FOOT WIDE X 4-FOOT TALL STAINLESS STEEL MECHANICAL OVERTOPPING GATE
 - 4.2. TOP ELEVATION = 4,671.00 FEET (GATE UP)
 - 4.3. TOP ELEVATION = 4,667.00 FEET (GATE DOWN)
 - 4.4. EACH GATE SHALL HAVE AN INDEPENDENT OPERATING SYSTEM.
 - 4.5. EACH GATE SHALL BE RAISED AND LOWERED BY HYDRAULIC CYLINDERS ACTIVATED BY A SMALL PUMP OR COMPRESSOR.
 - 4.6. POWER FOR OPERATING SYSTEM SHALL BE FROM BATTERIES STORED AT THE SITE CHARGED BY SOLAR PANELS.
 - 4.7. EACH GATE OPERATING SYSTEM SHALL BE CAPABLE OF CONNECTION TO TELEMETRY SYSTEM FOR REMOTE CONTROL FROM THE OWNER'S OFFICE.
 - 4.8. EACH GATE OPERATING SYSTEM SHALL BE PROGRAMMABLE BASED ON INPUT FROM LAKE LEVEL SENSORS AND PROGRAMMED TO LOWER AUTOMATICALLY TO MAINTAIN A MAXIMUM WSEL OF 4,671.00 FEET.
 - 4.9. EACH GATE OPERATOR SHALL BE EQUIPPED WITH AN INDEPENDENT FLOAT CONTROL OR OTHER PASSIVE, INDEPENDENT, REDUNDANT CONTROL THAT WILL TRIGGER THE GATE TO LOWER IF WSEL EXCEEDS 4,671.00 FEET.
 - 4.10. EACH GATE OPERATOR SHALL HAVE A MANUAL OVERRIDE.
 - 4.11. SEE SPECIFICATIONS FOR ADDITIONAL DETAILS.
5. GABIONS
 - 5.1. 6' X 3' X 18" STAINLESS STEEL WELDED-WIRE GABION BASKETS
 - 5.2. FILL WITH NATIVE ROCK.
6. LOG BOOM
 - 6.1. NATIVE LOGS, 16' TO 20' LONG and MIN 12" IN DIAMETER
 - 6.2. CONNECT AND ANCHOR TO WALL AT EACH END WITH 1" STAINLESS STEEL CHAIN AND HARDWARE.



- LEGEND:
- 4570— EXISTING MAJOR CONTOUR (5')
 - EXISTING MINOR CONTOUR (1')
 - MAJOR CONTOUR (5' INTERVAL)
 - MINOR CONTOUR (1' INTERVAL)
 - ▨ SLOPE ARMORING
 - ▨ SPILLWAY GABIONS W/CONCRETE
 - ▨ REINFORCED CONCRETE WALL
 - DIRECTION OF SURFACE FLOW



- NOTES:
1. HORIZONTAL DATUM: WASHINGTON STATE PLANE NORTH ZONE, NAD 83, U.S. FEET.
 2. VERTICAL DATUM: NAVD88

30% DESIGN-NOT FOR CONSTRUCTION

K:\Projects\1810-Peshastin Irrigation District\Eightmile Lake Final Design\Construction Plans\1810-PL-Restoration.dwg 8 C2 Jul 10, 2019 2:03pm drc



ICICLE AND PESHAstin IRRIGATION DISTRICTS

REVISIONS				
REV	DATE	BY	APP'D	DESCRIPTION

DESIGNED BY: J. SEXTON
 DRAWN BY: T. GRIGA
 CHECKED BY: D. RICE
 APPROVED BY: R. MONTGOMERY
 SCALE: AS NOTED
 DATE: JULY 2019

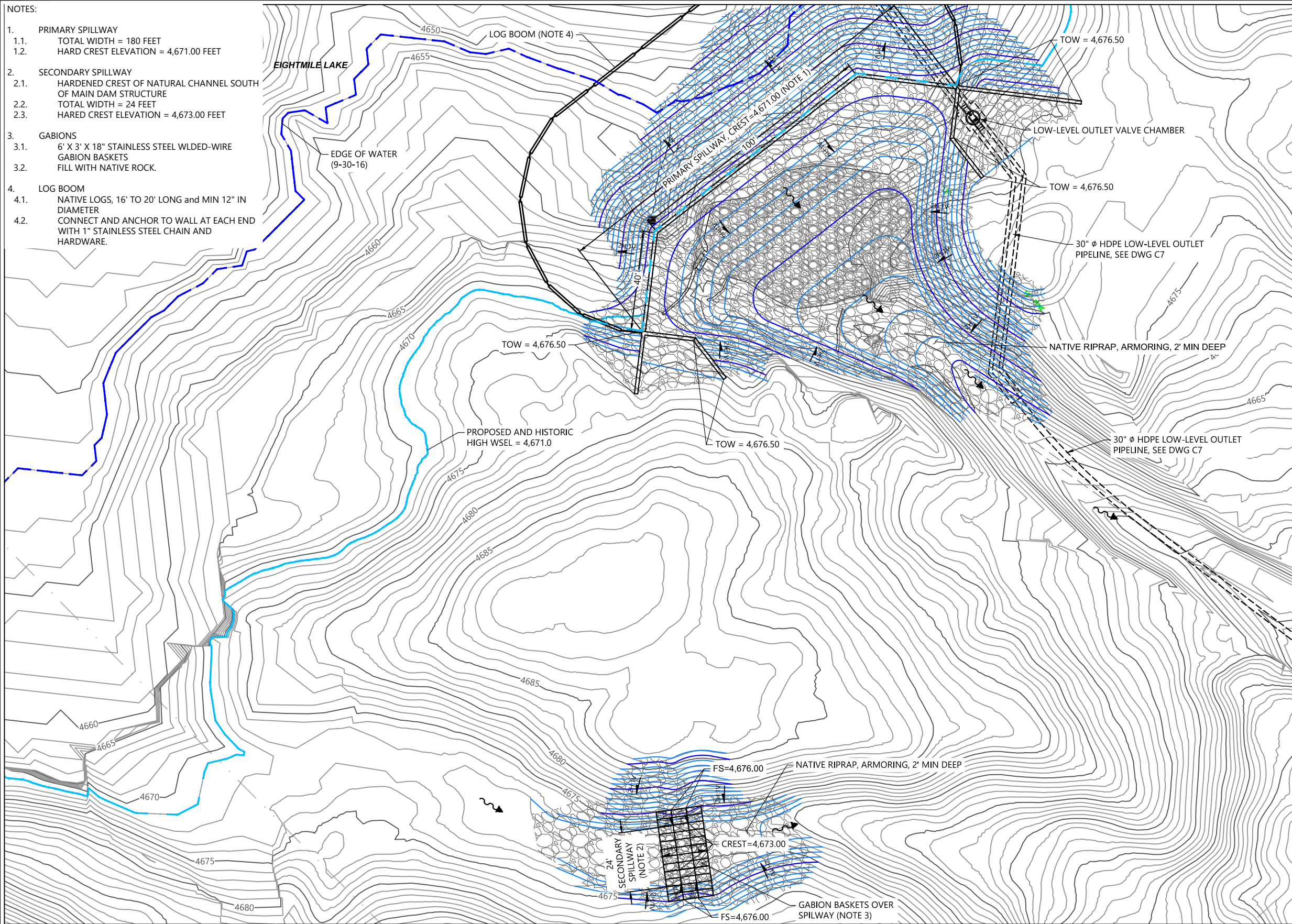
EIGHTMILE LAKE STORAGE RESTORATION

EMBANKMENT PLAN

C2

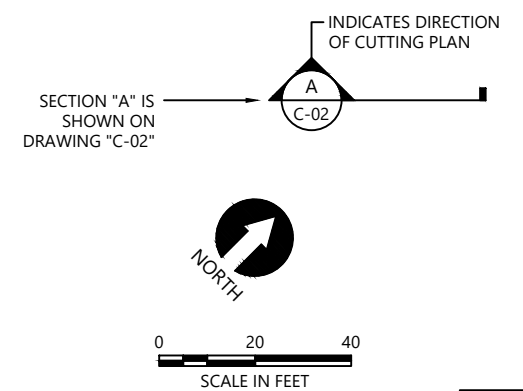
SHEET # **8** OF **15**

PLAN INTENDED TO BE VIEWED IN COLOR. ADJACENT BLOCK IS "BLUE" INCH SCALE ACCORDINGLY



- NOTES:
1. PRIMARY SPILLWAY
 - 1.1. TOTAL WIDTH = 180 FEET
 - 1.2. HARD CREST ELEVATION = 4,671.00 FEET
 2. SECONDARY SPILLWAY
 - 2.1. HARDENED CREST OF NATURAL CHANNEL SOUTH OF MAIN DAM STRUCTURE
 - 2.2. TOTAL WIDTH = 24 FEET
 - 2.3. HARED CREST ELEVATION = 4,673.00 FEET
 3. GABIONS
 - 3.1. 6' X 3' X 18" STAINLESS STEEL WLDED-WIRE GABION BASKETS
 - 3.2. FILL WITH NATIVE ROCK.
 4. LOG BOOM
 - 4.1. NATIVE LOGS, 16' TO 20' LONG and MIN 12" IN DIAMETER
 - 4.2. CONNECT AND ANCHOR TO WALL AT EACH END WITH 1" STAINLESS STEEL CHAIN AND HARDWARE.

- LEGEND:
- 4570— EXISTING MAJOR CONTOUR (5')
 - EXISTING MINOR CONTOUR (1')
 - MAJOR CONTOUR (5' INTERVAL)
 - MINOR CONTOUR (1' INTERVAL)
 - [Symbol] SLOPE ARMORING
 - [Symbol] SPILLWAY GABIONS W/CONCRETE
 - [Symbol] REINFORCED CONCRETE WALL
 - [Symbol] DIRECTION OF SURFACE FLOW



- NOTES:
1. HORIZONTAL DATUM: WASHINGTON STATE PLANE NORTH ZONE, NAD 83, U.S. FEET.
 2. VERTICAL DATUM: NAVD88

30% DESIGN-NOT FOR CONSTRUCTION

PLAN INTENDED TO BE VIEWED IN COLOR. ADJACENT BLOCK IS "BLUE" INCH SCALE ACCORDINGLY

K:\Projects\1810-Peshastin Irrigation District\Eightmile Lake Final Design\Construction Plans\1810-PL-Restoration-2A.dwg BA C2A Jul 10, 2019 2:04pm drc



ICICLE AND PESHASTIN IRRIGATION DISTRICTS

REVISIONS				
REV	DATE	BY	APP'D	DESCRIPTION

DESIGNED BY: J. SEXTON
 DRAWN BY: T. GRIGA
 CHECKED BY: D. RICE
 APPROVED BY: R. MONTGOMERY
 SCALE: AS NOTED
 DATE: JULY 2019

EIGHTMILE LAKE STORAGE RESTORATION

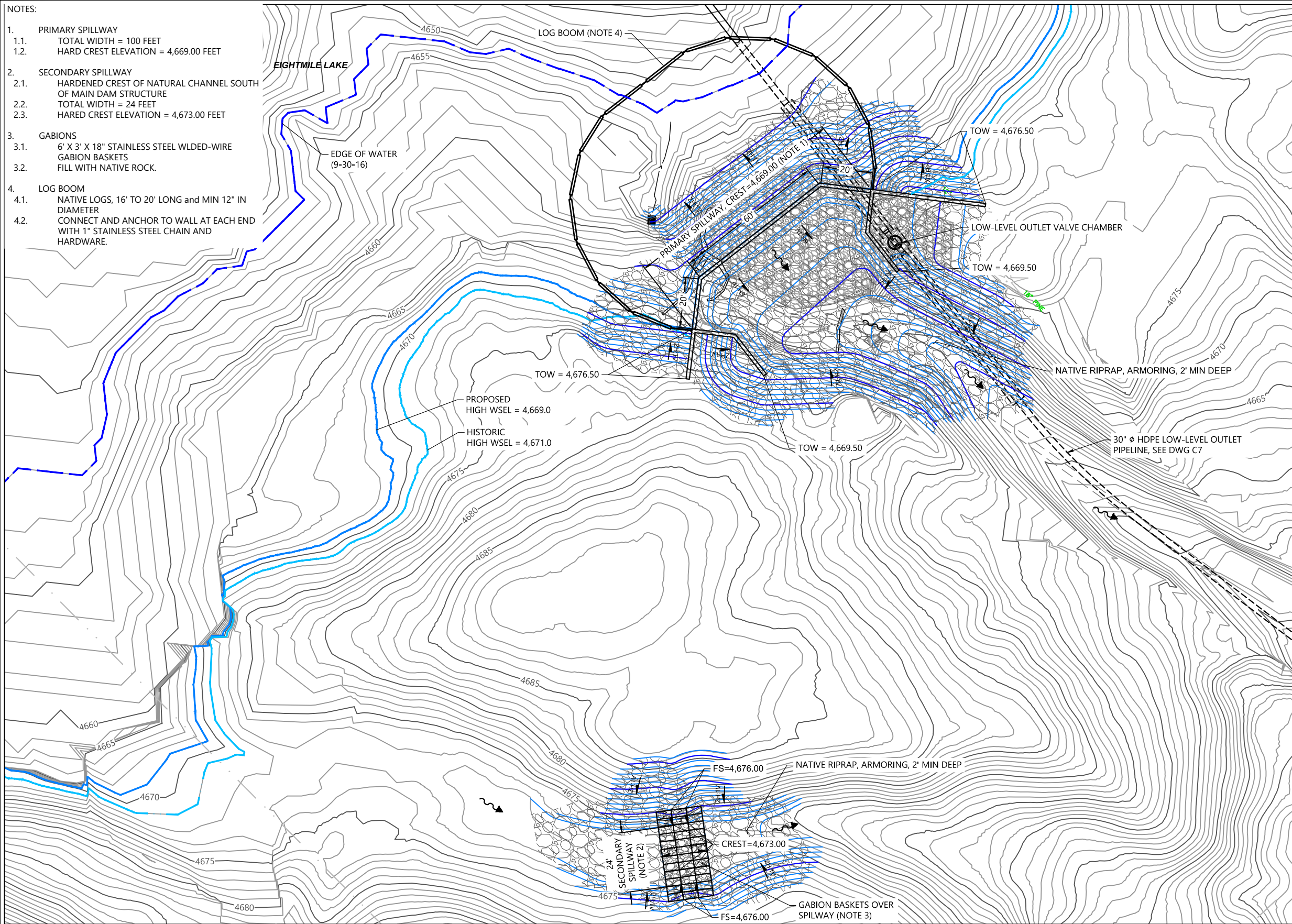
**EMBANKMENT PLAN
 ALTERNATE CONFIGURATION 2A - NO GATE**

C2A

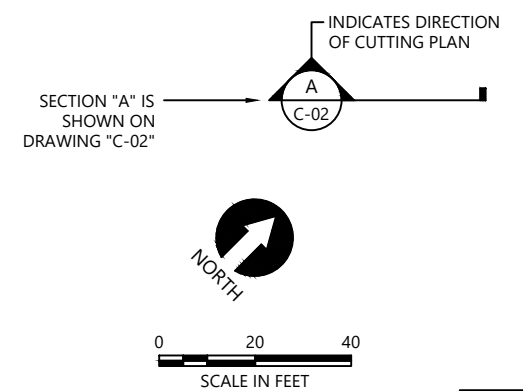
SHEET # **8A** OF 15

NOTES:

1. PRIMARY SPILLWAY
 - 1.1. TOTAL WIDTH = 100 FEET
 - 1.2. HARD CREST ELEVATION = 4,669.00 FEET
2. SECONDARY SPILLWAY
 - 2.1. HARDENED CREST OF NATURAL CHANNEL SOUTH OF MAIN DAM STRUCTURE
 - 2.2. TOTAL WIDTH = 24 FEET
 - 2.3. HARD CREST ELEVATION = 4,673.00 FEET
3. GABIONS
 - 3.1. 6' X 3' X 18" STAINLESS STEEL WLD-ED-WIRE GABION BASKETS
 - 3.2. FILL WITH NATIVE ROCK.
4. LOG BOOM
 - 4.1. NATIVE LOGS, 16' TO 20' LONG and MIN 12" IN DIAMETER
 - 4.2. CONNECT AND ANCHOR TO WALL AT EACH END WITH 1" STAINLESS STEEL CHAIN AND HARDWARE.



- LEGEND:
- 4570— EXISTING MAJOR CONTOUR (5')
 - EXISTING MINOR CONTOUR (1')
 - MAJOR CONTOUR (5' INTERVAL)
 - MINOR CONTOUR (1' INTERVAL)
 - [Pattern] SLOPE ARMORING
 - [Pattern] SPILLWAY GABIONS W/CONCRETE
 - [Pattern] REINFORCED CONCRETE WALL
 - > DIRECTION OF SURFACE FLOW



- NOTES:
1. HORIZONTAL DATUM: WASHINGTON STATE PLANE NORTH ZONE, NAD 83, U.S. FEET.
 2. VERTICAL DATUM: NAVD88

30% DESIGN-NOT FOR CONSTRUCTION

PLAN INTENDED TO BE VIEWED IN COLOR. ADJACENT BLOCK IS "BLUE" INCH SCALE ACCORDINGLY

K:\Projects\1810-Peshastin Irrigation District\Eightmile Lake Final Design\Construction Plans\1810-PL-Restoration-28Aug88 C2B Jul 10, 2019 2:04pm drc



ICICLE AND PESHASTIN IRRIGATION DISTRICTS

REVISIONS				
REV	DATE	BY	APP'D	DESCRIPTION

DESIGNED BY: J. SEXTON
 DRAWN BY: T. GRIGA
 CHECKED BY: D. RICE
 APPROVED BY: R. MONTGOMERY
 SCALE: AS NOTED
 DATE: JULY 2019

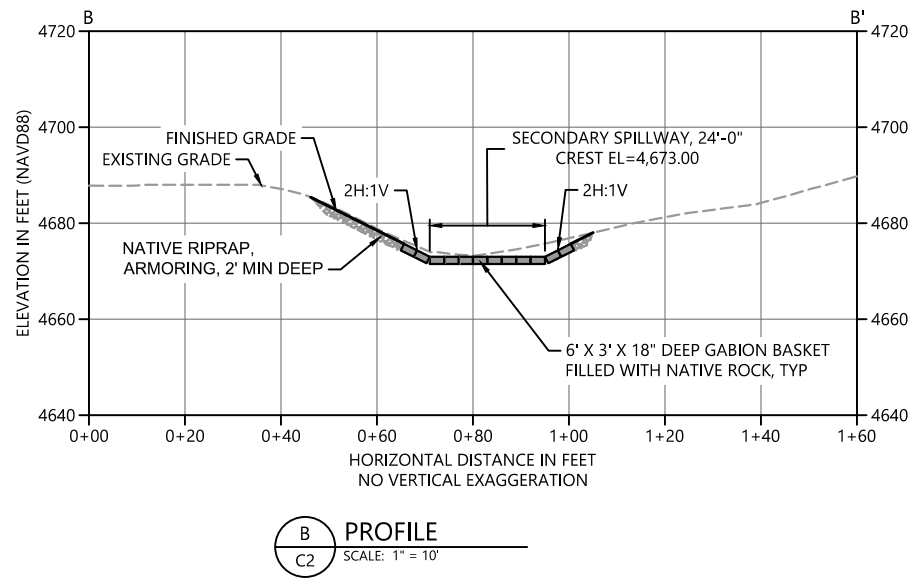
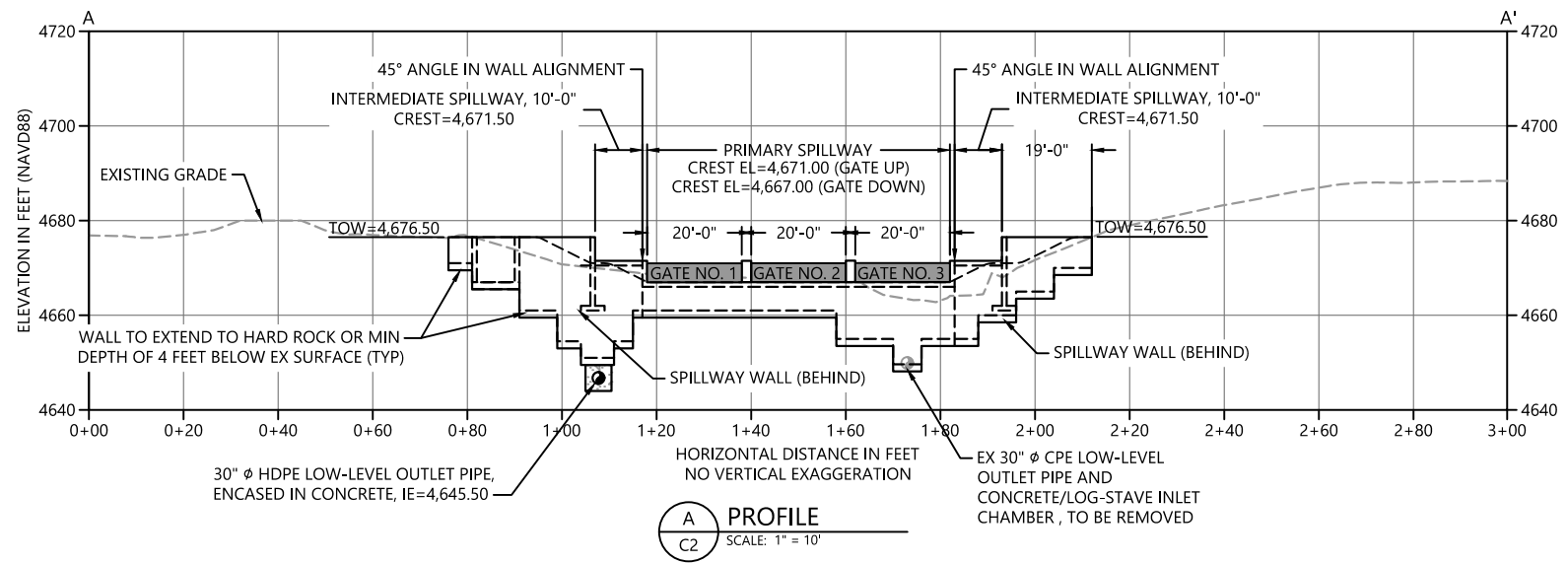
EIGHTMILE LAKE STORAGE RESTORATION

**EMBANKMENT PLAN
 ALTERNATE CONFIGURATION 2B - NO GATE**

C2B

SHEET # **8B** OF 15

K:\Projects\1810-Peshastin Irrigation District\Eightmile Lake Final Design\Construction Plans\1810-PL-Restoration.dwg 9 C3 Jul 10, 2019 2:05pm drc



30% DESIGN-NOT FOR CONSTRUCTION



ICICLE AND PESHASTIN IRRIGATION DISTRICTS

REVISIONS				
REV	DATE	BY	APP'D	DESCRIPTION

DESIGNED BY: J. SEXTON
 DRAWN BY: T. GRIGA
 CHECKED BY: D. RICE
 APPROVED BY: R. MONTGOMERY
 SCALE: AS NOTED
 DATE: JULY 2019

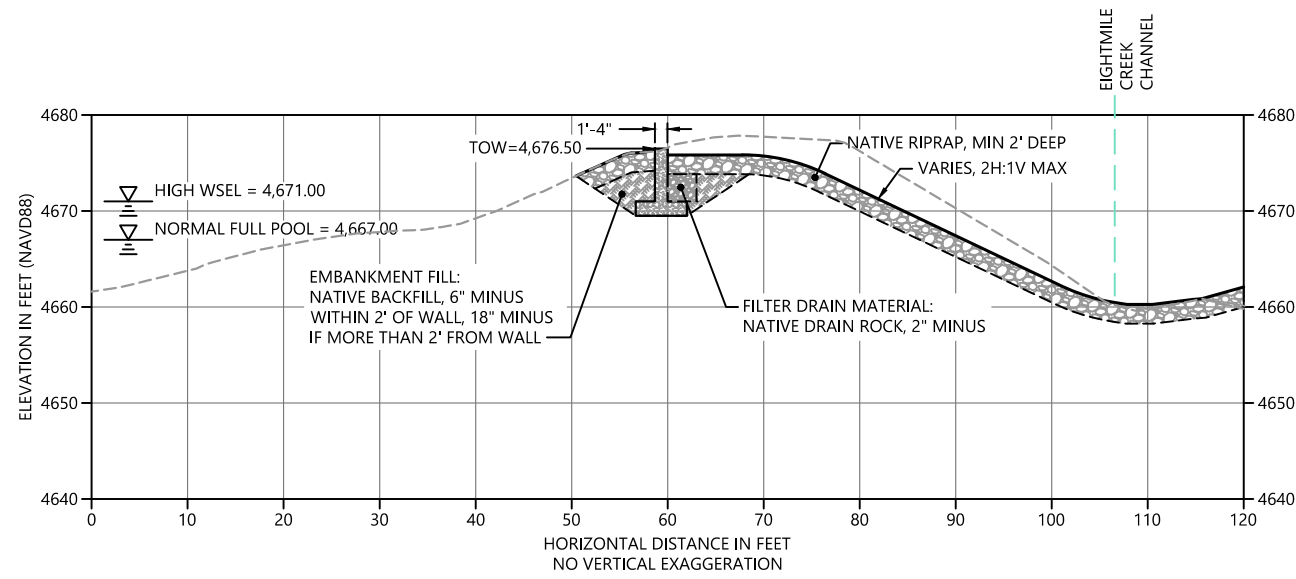
EIGHTMILE LAKE STORAGE RESTORATION

EMBANKMENT PROFILES

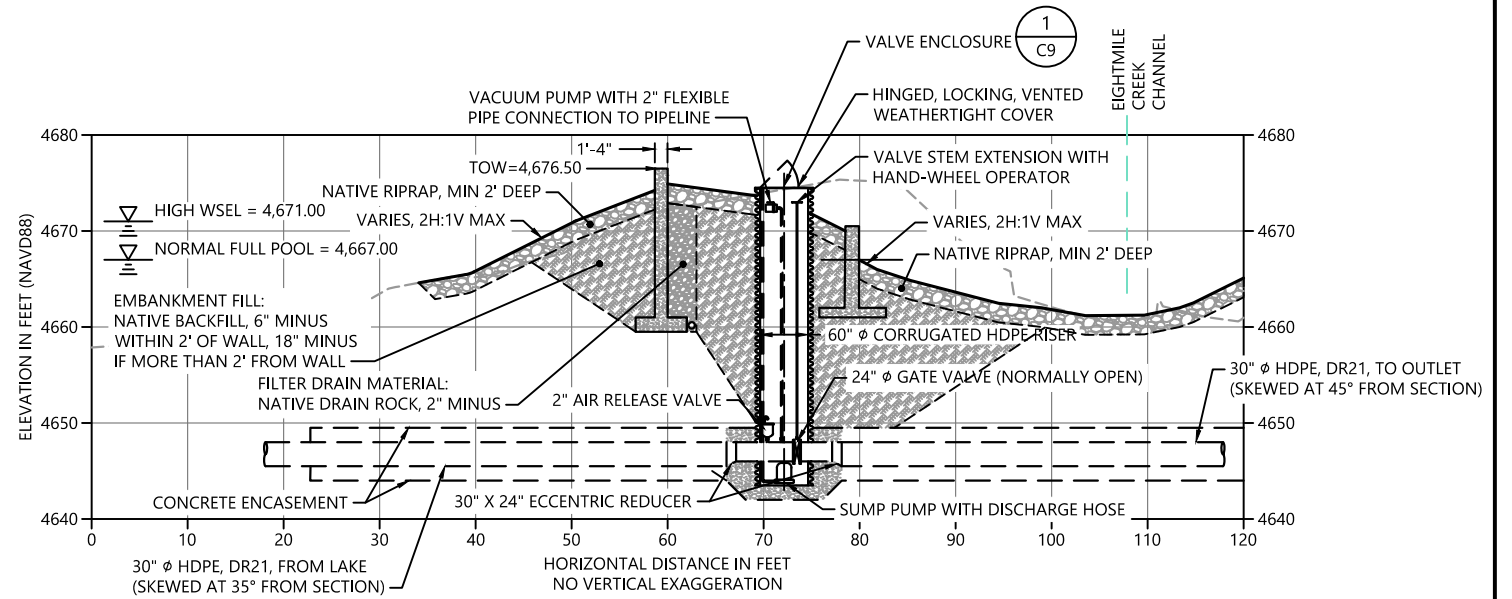
C3
 SHEET # **9** OF **15**

ONE INCH AT FULL SIZE IF NOT ONE INCH SCALE ACCORDINGLY
 PLAN INTENDED TO BE VIEWED IN COLOR. ADJACENT BLOCK IS "BLUE"

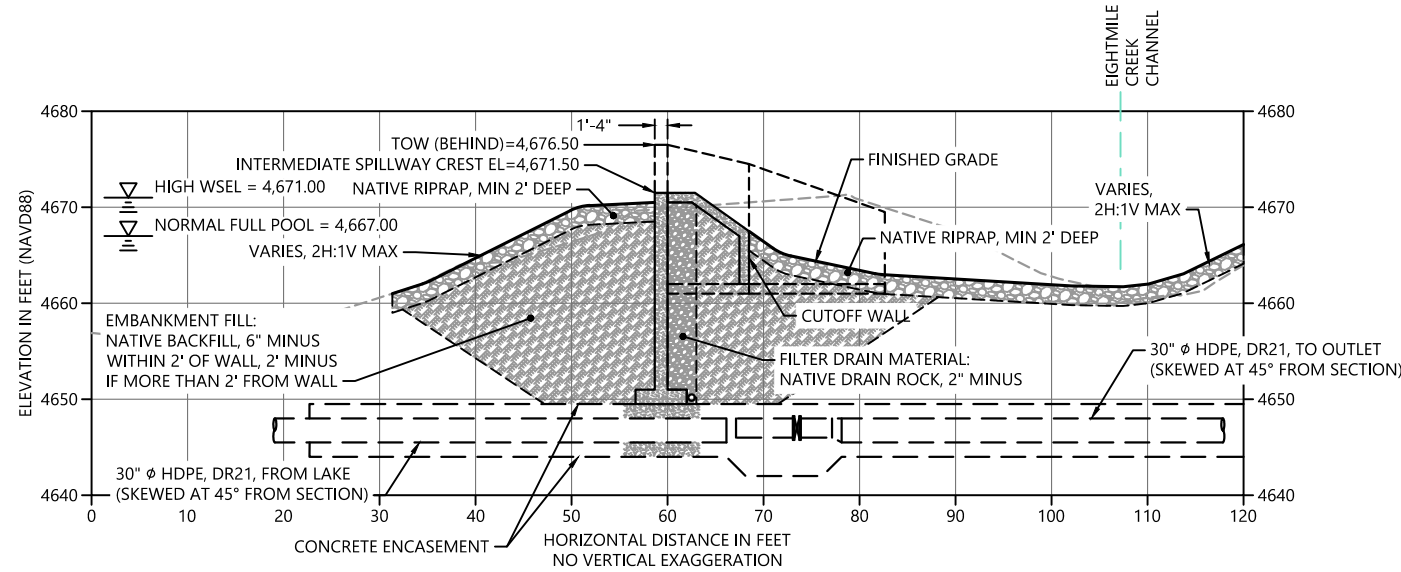
K:\Projects\1810-Peshastin Irrigation District\Eightmile Lake Final Design\Construction Plans\1810-PL-Restoration.dwg 10-C4
 Jul 10, 2019 2:05pm edice



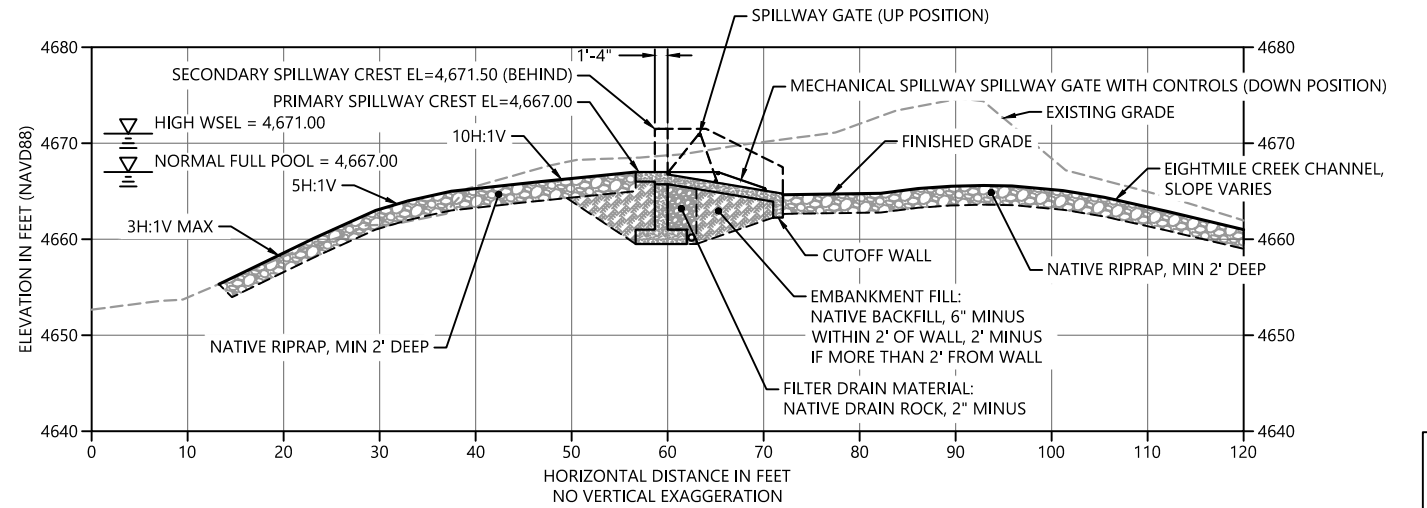
A0+77 SECTION
 C2 SCALE: 1" = 10'



A0+95.6 SECTION
 C2 SCALE: 1" = 10'



A1+08 SECTION
 C2 SCALE: 1" = 10'



A1+19 SECTION
 C2 SCALE: 1" = 10'

30% DESIGN-NOT FOR CONSTRUCTION



ICICLE AND PESHASTIN IRRIGATION DISTRICTS

REVISIONS				
REV	DATE	BY	APP'D	DESCRIPTION

DESIGNED BY: J. SEXTON
 DRAWN BY: T. GRIGA
 CHECKED BY: D. RICE
 APPROVED BY: R. MONTGOMERY
 SCALE: AS NOTED
 DATE: JULY 2019

EIGHTMILE LAKE STORAGE RESTORATION

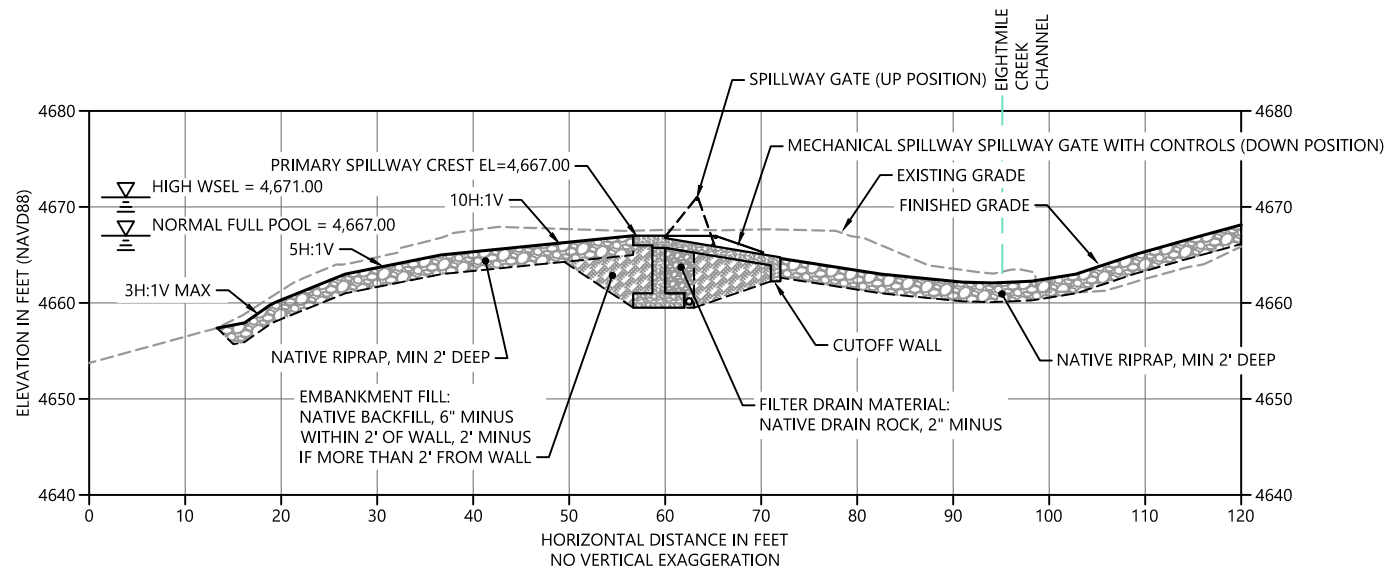
EMBANKMENT SECTIONS (1 OF 3)

C4

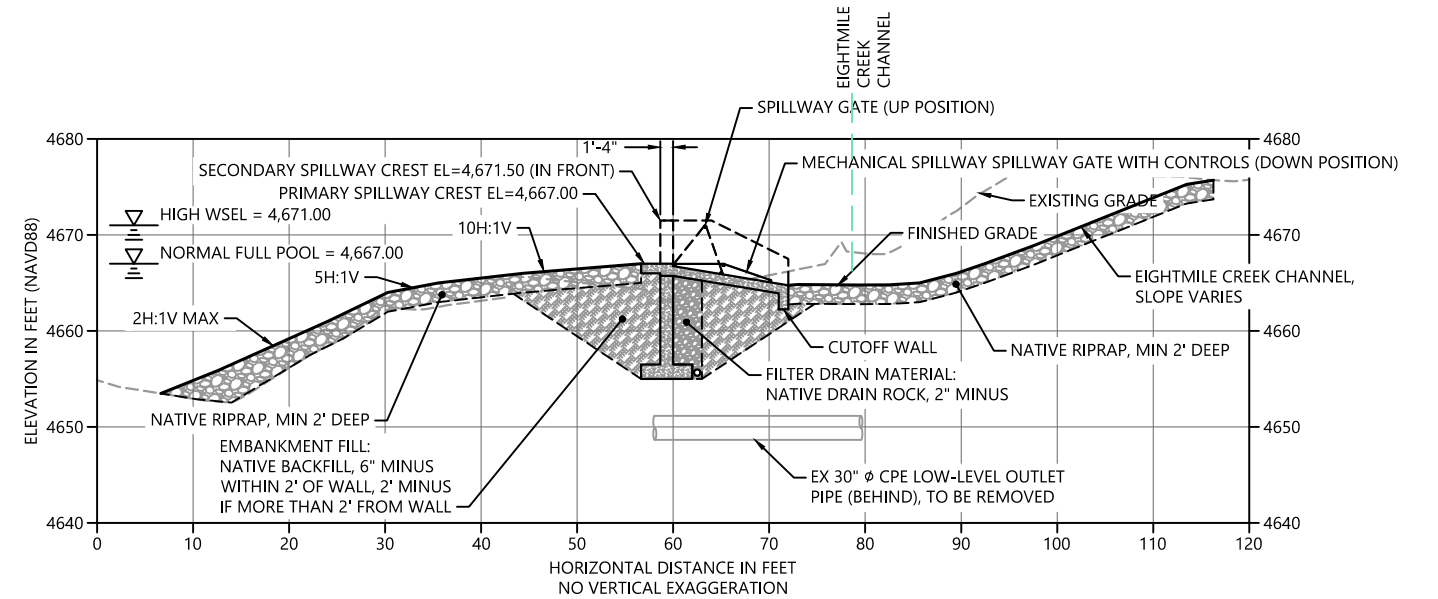
SHEET # **10** OF **15**

ONE INCH
 AT FULL SIZE IF NOT ONE
 INCH SCALE ACCORDINGLY
 PLAN INTENDED TO BE VIEWED
 IN COLOR. ADJACENT BLOCK IS
 "BLUE"

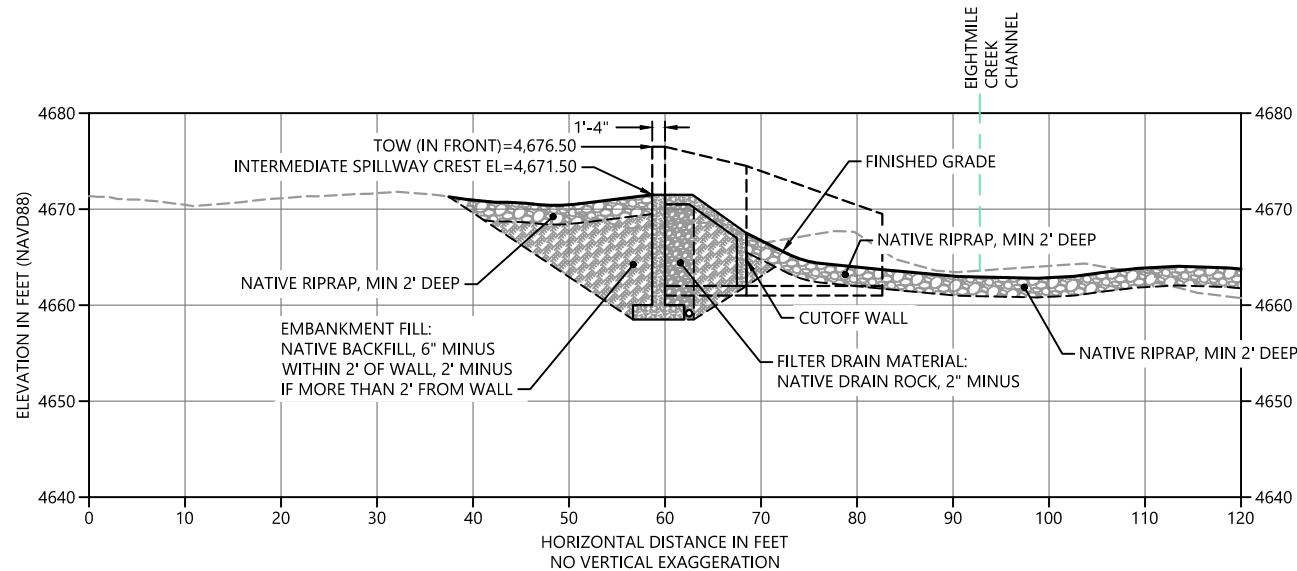
K:\Projects\1810-Peshastin Irrigation District\Eightmile Lake Final Design\Construction Plans\1810-PL-Restoration.dwg 11.C5



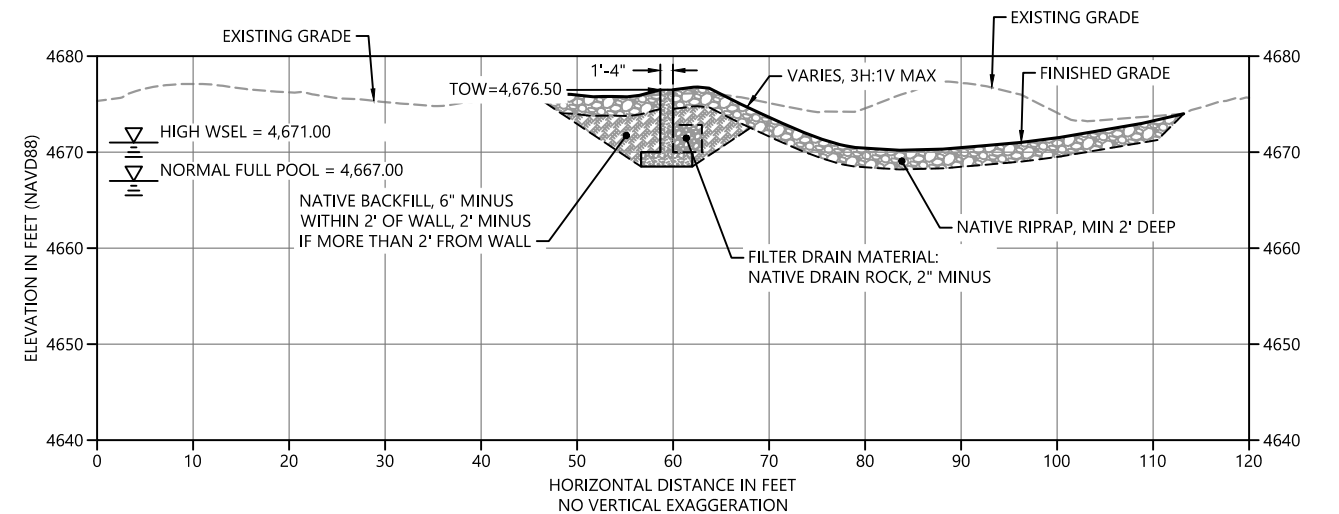
A1+50 SECTION
C2 SCALE: 1" = 10'



A1+81 SECTION
C2 SCALE: 1" = 10'



A1+92 SECTION
C2 SCALE: 1" = 10'



A2+11 SECTION
C2 SCALE: 1" = 10'

30% DESIGN-NOT FOR CONSTRUCTION



ICICLE AND PESHASTIN IRRIGATION DISTRICTS

REVISIONS				
REV	DATE	BY	APP'D	DESCRIPTION

DESIGNED BY: J. SEXTON
 DRAWN BY: T. GRIGA
 CHECKED BY: D. RICE
 APPROVED BY: R. MONTGOMERY
 SCALE: AS NOTED
 DATE: JULY 2019

EIGHTMILE LAKE STORAGE RESTORATION

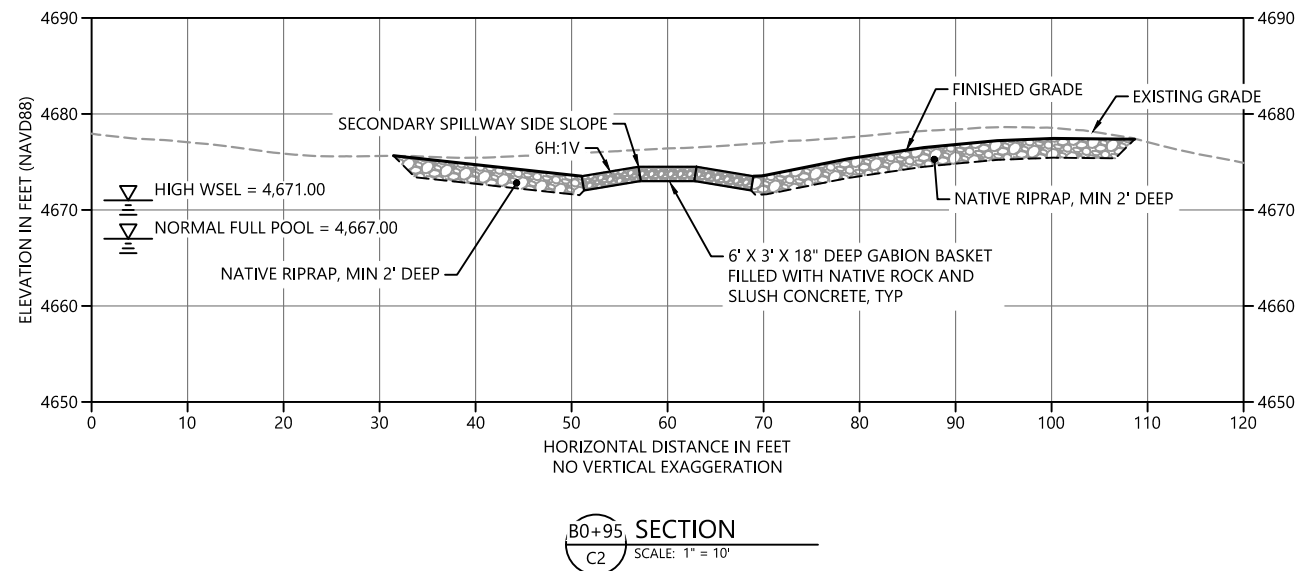
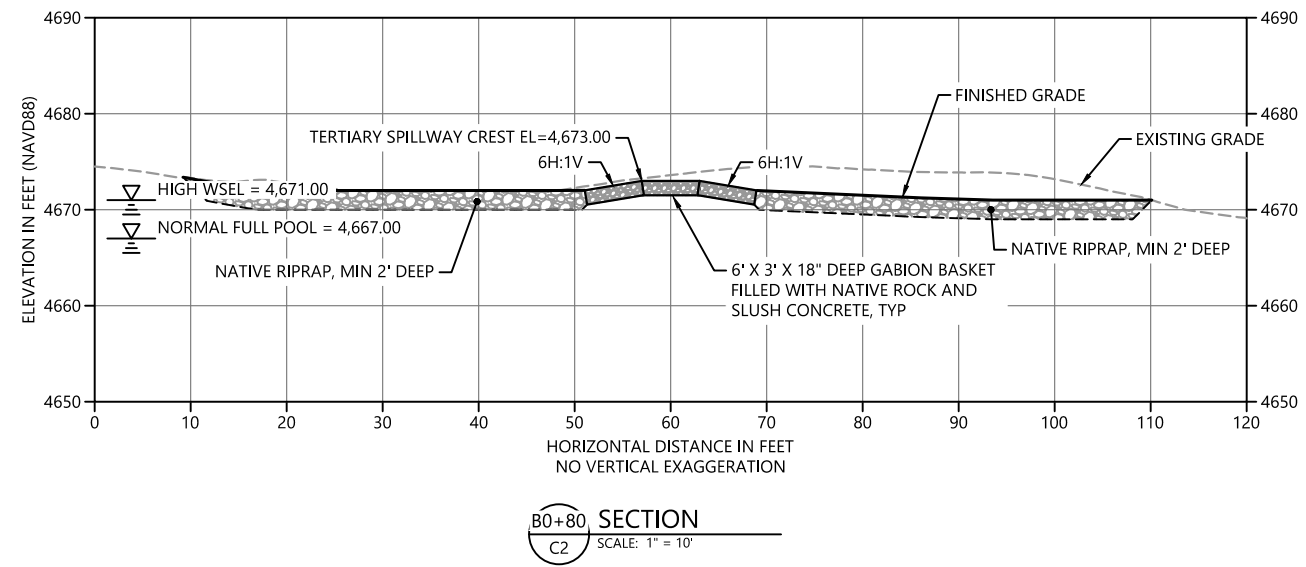
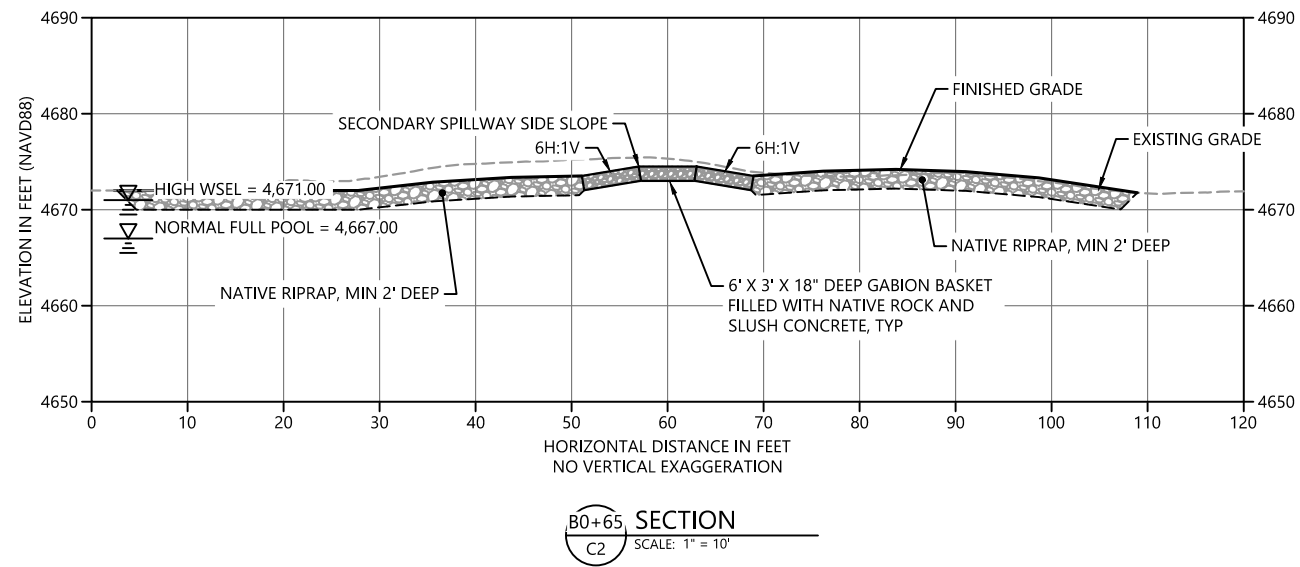
EMBANKMENT SECTIONS (2 OF 3)

C5

SHEET # **11** OF **15**

ONE INCH
AT FULL SIZE IF NOT ONE INCH SCALE ACCORDINGLY
PLAN INTENDED TO BE VIEWED IN COLOR. ADJACENT BLOCK IS "BLUE"

K:\Projects\1810-Peshastin Irrigation District\Eightmile Lake Final Design\Construction Plans\1810-PL-Restoration.dwg 12.C6
Jul 10, 2019 2:05pm drc



ONE INCH
↑
AT FULL SIZE IF NOT ONE
INCH SCALE ACCORDINGLY

30% DESIGN-NOT FOR CONSTRUCTION



ICICLE AND PESHAstin IRRIGATION DISTRICTS

REVISIONS				
REV	DATE	BY	APP'D	DESCRIPTION

DESIGNED BY: J. SEXTON
 DRAWN BY: T. GRIGA
 CHECKED BY: D. RICE
 APPROVED BY: R. MONTGOMERY
 SCALE: AS NOTED
 DATE: JULY 2019

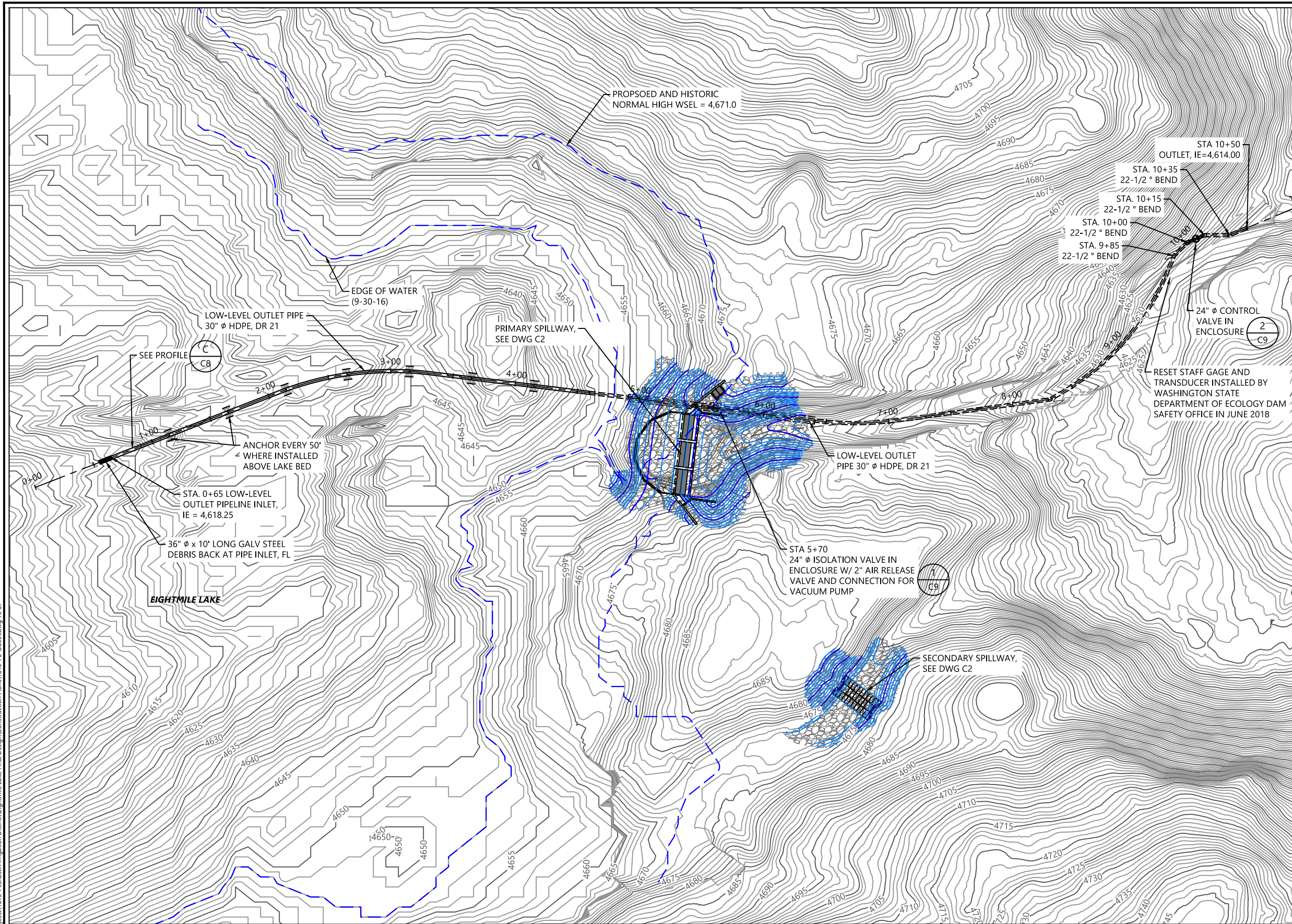
EIGHTMILE LAKE STORAGE RESTORATION

EMBANKMENT SECTIONS (3 OF 3)

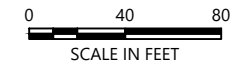
C6

SHEET # **12** OF **15**

K:\Projects\1810-Peshastin Irrigation District\Eightmile Lake Final Design\Construction Plans\1810-PL-Outlet.dwg 13.C7
 Jul 10, 2019 2:05pm drc



- LEGEND:
- 4570— EXISTING MAJOR CONTOUR (5')
 - EXISTING MINOR CONTOUR (1')
 - MAJOR CONTOUR (5' INTERVAL)
 - MINOR CONTOUR (1' INTERVAL)
 - ▬▬▬ SUBMERGED PIPELINE
 - ▬▬▬ BURIED PIPELINE
 - ▨ SLOPE ARMORING
 - ▨ SPILLWAY GABIONS W/CONCRETE
 - ▭ REINFORCED CONCRETE WALL



- NOTES:
1. HORIZONTAL DATUM: WASHINGTON STATE PLANE NORTH ZONE, NAD 83, U.S. FEET.
 2. VERTICAL DATUM: NAVD88

30% DESIGN-NOT FOR CONSTRUCTION

PLAN INTENDED TO BE VIEWED IN COLOR. ADJACENT BLOCK IS "BLUE" INCH SCALE ACCORDINGLY



ICICLE AND PESHAstin IRRIGATION DISTRICTS

REVISIONS				
REV	DATE	BY	APP'D	DESCRIPTION

DESIGNED BY: J. SEXTON
 DRAWN BY: T. GRIGA
 CHECKED BY: D. RICE
 APPROVED BY: R. MONTGOMERY
 SCALE: AS NOTED
 DATE: JULY 2019

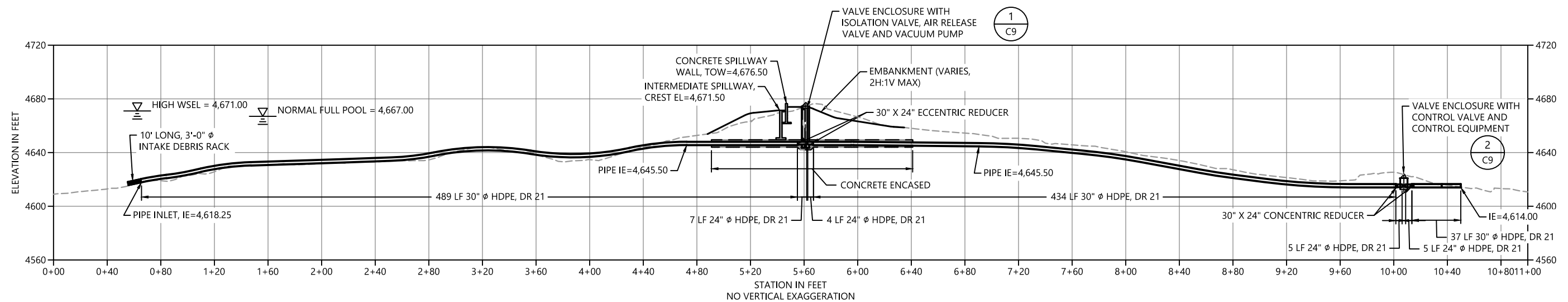
EIGHTMILE LAKE STORAGE RESTORATION

LOW-LEVEL OUTLET PLAN

C7

SHEET # **13** OF **15**

K:\Projects\1810-Peshastin Irrigation District\Eightmile Lake Final Design\Construction Plans\1810-PL-Outlet.dwg 14.C8
Jul 10, 2019 2:05pm drc



C
C7 **LOW-LEVEL OUTLET PROFILE**
SCALE: 1" = 40'

30% DESIGN-NOT FOR CONSTRUCTION



ICICLE AND PESHASTIN IRRIGATION DISTRICTS

REVISIONS				
REV	DATE	BY	APP'D	DESCRIPTION

DESIGNED BY: J. SEXTON
 DRAWN BY: T. GRIGA
 CHECKED BY: D. RICE
 APPROVED BY: R. MONTGOMERY
 SCALE: AS NOTED
 DATE: JULY 2019

EIGHTMILE LAKE STORAGE RESTORATION

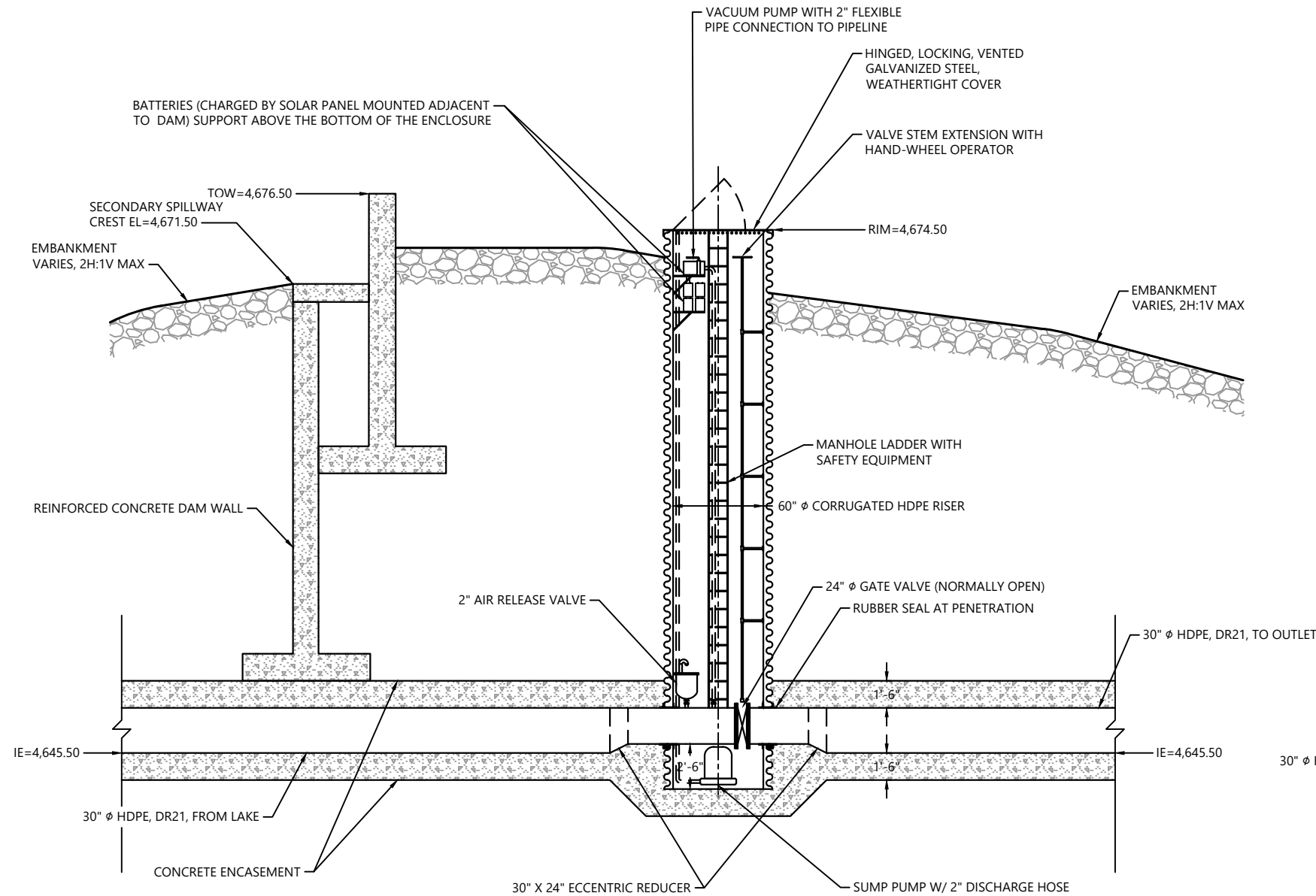
LOW-LEVEL OUTLET PROFILE

C8

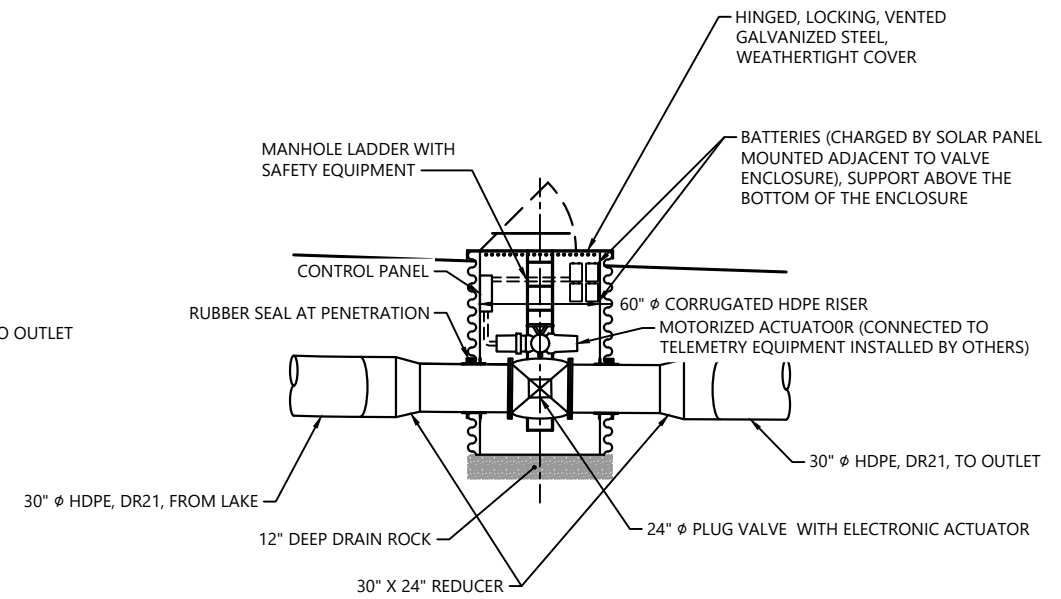
SHEET # **14** OF **15**

ONE INCH
↑
AT FULL SIZE IF NOT ONE
INCH SCALE ACCORDINGLY
PLAN INTENDED TO BE VIEWED
IN COLOR. ADJACENT BLOCK IS
"BLUE"

K:\Projects\1810-Peshastin Irrigation District\Eightmile Lake Final Design\Construction Plans\1810-PL-Restoration.dwg 15 C9
Jul 10, 2019 2:05pm drc



1 ISOLATION VALVE ENCLOSURE
C7 SCALE: 1" = 4'



2 CONTROL VALVE ENCLOSURE
C7 SCALE: 1" = 4'

30% DESIGN-NOT FOR CONSTRUCTION



ICICLE AND PESHASTIN IRRIGATION DISTRICTS

REVISIONS				
REV	DATE	BY	APP'D	DESCRIPTION

DESIGNED BY: J. SEXTON
 DRAWN BY: T. GRIGA
 CHECKED BY: D. RICE
 APPROVED BY: R. MONTGOMERY
 SCALE: AS NOTED
 DATE: JULY 2019

EIGHTMILE LAKE STORAGE RESTORATION

DETAILS

PLAN INTENDED TO BE VIEWED
IN COLOR. ADJACENT BLOCK IS
"BLUE"
ONE INCH
AT FULL SIZE. IF NOT ONE
INCH SCALE ACCORDINGLY

C9

SHEET # **15** OF **15**