

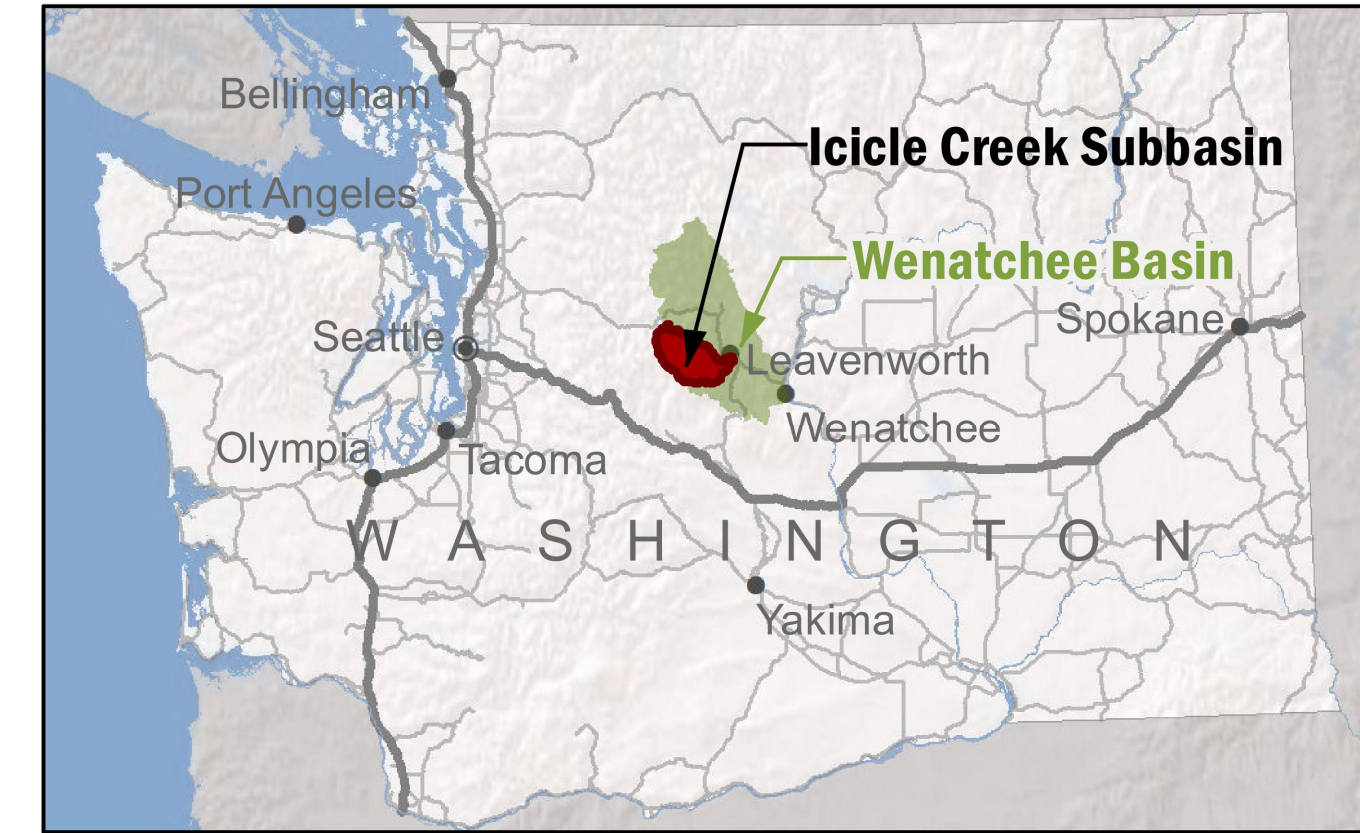
COLCHUCK LAKE

ALPINE LAKES AUTOMATION DESIGN, LEAVENWORTH, WASHINGTON

DRAFT

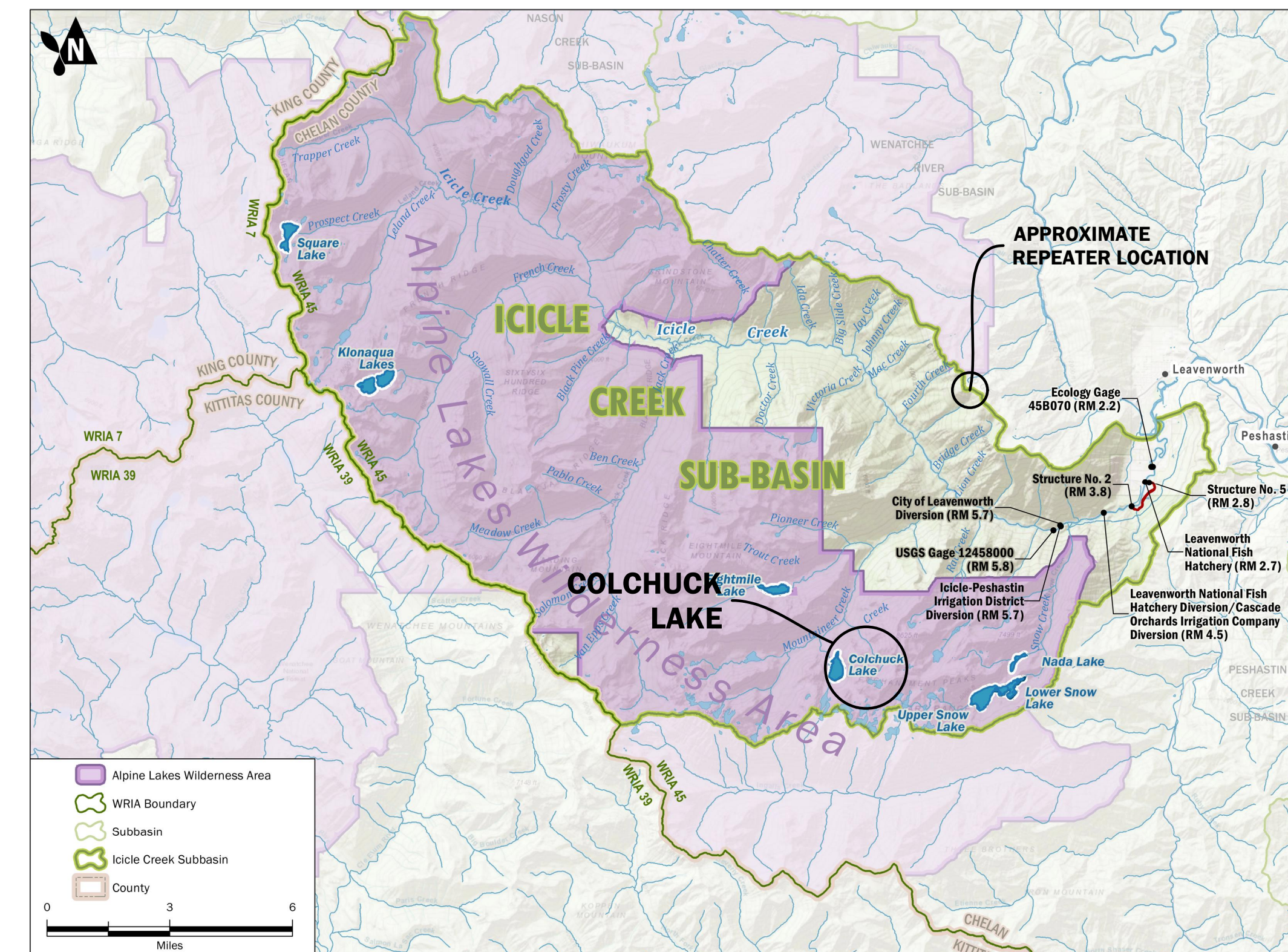
GENERAL NOTES

- ALL WORKMANSHIP AND MATERIALS SHALL CONFORM TO THE MOST CURRENT STANDARD BUILDING CODES AS ADOPTED BY THE REGULATING AGENCIES.
- THE CONTRACTOR IS RESPONSIBLE FOR THE MEANS AND METHODS OF CONSTRUCTION, THE COORDINATION OF ALL WORK, SAFETY OF ALL PERSONS AT THE PROJECT SITE, AND SHALL COMPLY WITH ALL JOB RELATED SAFETY STANDARDS. THE CONTRACTOR IS RESPONSIBLE FOR DETERMINING ACTUAL CONDITIONS OF ALL EXISTING UTILITIES SHOWN ON THE PLANS AND THOSE UTILITIES AND UNDERGROUND OBSTRUCTIONS NOT SHOWN ON THE PLANS. THE CONTRACTOR SHALL REMOVE ALL ABANDONED UTILITIES OR UNDERGROUND OBSTRUCTIONS THAT INTERFERE WITH NEW CONSTRUCTION AND PROTECT/REPLACE THOSE IDENTIFIED ON THE PLANS. EXCAVATION SLOPES SHALL BE SAFE AND NOT GREATER THAN THE LIMITS SPECIFIED BY LOCAL, STATE, AND NATIONAL SAFETY REGULATIONS.
- THE CONTRACTOR SHALL PROVIDE PROTECTION FOR PEDESTRIANS AND VEHICULAR TRAFFIC WHEN CONSTRUCTION ACTIVITIES WARRANT SUCH PROTECTION.
- A COPY OF THESE APPROVED PLANS AND ANY REQUIRED PERMITS MUST BE ON SITE AT ALL TIMES.
- THE OWNER SHALL OBTAIN ALL REQUIRED PERMITS.
- THE REQUIREMENTS OF THIS PLAN ARE THE MINIMUM REQUIREMENTS. THEY DO NOT REPLACE, REPEAL, ABROGATE, SUPERSEDE, OR AFFECT ANY OTHER MORE STRINGENT REQUIREMENTS, RULES, REGULATIONS, STANDARDS OR RESTRICTIONS.
- ALL SURVEYING AND STAKING OF IMPROVEMENTS IS TO BE PROVIDED BY THE CONTRACTOR. CONTRACTOR SHALL FIELD VERIFY SITE CONDITIONS PRIOR TO STARTING AND SHALL NOTIFY ENGINEER IF THERE ARE DISCREPANCIES WITH THE PLANS.
- CONTRACTOR SHALL PROTECT NEARBY EXISTING UTILITIES, STRUCTURES, PAVEMENTS AND FACILITIES.
- CONTRACTOR SHALL LOCATE AND PROTECT ALL UTILITIES DURING CONSTRUCTION AND SHALL CONTACT THE UNDERGROUND UTILITIES LOCATOR SERVICE (1-800-424-5555) OR (811) AT LEAST 72 HOURS PRIOR TO CONSTRUCTION. A PRIVATE/THIRD PARTY LOCATE SERVICE SHALL BE USED TO LOCATE/IDENTIFY BURIED UTILITIES ON PRIVATE PROPERTY.
- CONTRACTOR SHALL BE RESPONSIBLE FOR PROVIDING ADEQUATE TRAFFIC/ACCESS CONTROL AT ALL TIMES DURING CONSTRUCTION ALONGSIDE OR WITHIN ALL PUBLIC RIGHT OF WAYS.
- CONTRACTOR SHALL PROTECT ANY POWER POLES NEAR EXCAVATION PER WAC 296-155-655(9)(a).
- THE ENGINEER OR THEIR REPRESENTATIVE MUST BE ONSITE DURING CRITICAL CONSTRUCTION OPERATIONS. THE ENGINEER WILL BE PRESENT AT THE PRE-CONSTRUCTION MEETING. CONTRACTOR SHALL NOTIFY ENGINEER AT LEAST 72 HOURS BEFORE SCHEDULED PRE-CONSTRUCTION MEETING.
- CONTRACTOR SHALL IMPLEMENT A TEMPORARY EROSION AND SEDIMENTATION CONTROL PLAN IN ACCORDANCE WITH CITY REGULATIONS.
- THE CONTRACTOR SHALL KEEP AFFECTED OFFSITE STREETS CLEAN AT ALL TIMES.
- EROSION AND SEDIMENTATION CONTROL FACILITIES SHALL NOT BE REMOVED UNTIL CONSTRUCTION IS COMPLETE AND ACCEPTED BY PERMITTING AGENCIES.
- THIS PLAN IS FOR CONSTRUCTION OCCURRING BETWEEN APRIL 1ST AND OCTOBER 30TH. ANY CONSTRUCTION WORK THAT OCCURS BETWEEN NOVEMBER 1ST AND MARCH 30TH MAY REQUIRE SEPARATE APPROVAL.



VICINITY MAP

Scale: NTS



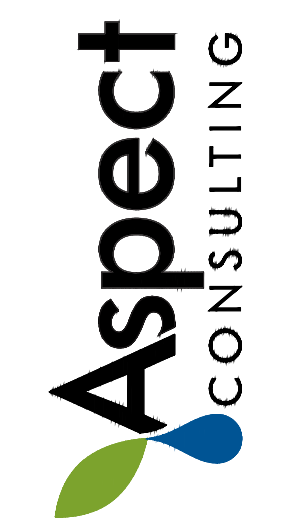
PROJECT LOCATION MAP

Scale: 1" = 3'

ABBREVIATIONS:

'	FEET, MINUTES	FPS	FEET PER SECOND
"	INCHES, SECONDS	GALV	GALVANIZED
°	DEGREES	GPM	GALLONS PER MINUTE
∅	DIAMETER	HPDE	HIGH-DENSITY POLYETHYLENE
#	NUMBER	HOR	HORIZONTAL
AASHTO	AMERICAN ASSOCIATION OF STATE HIGHWAY AND TRANSPORTATION OFFICES	ID	INSIDE DIAMETER
APWA	AMERICAN PUBLIC WORKS ASSOCIATION	IE	INVERT ELEVATION
ASSY	ASSEMBLY	IPID	ICICLE AND PESHASTIN AND IRRIGATION DISTRICTS
ASTM	AMERICAN SOCIETY FOR TESTING AND MATERIALS	L	LENGTH
BM	BENCHMARK	LF	LINEAR FEET
CFS	CUBIC FEET PER SECOND	MAX	MAXIMUM
CL	CENTERLINE	MIN	MINIMUM
CMP	CORRUGATED METAL PIPE	N	NORTH, NORTHING
CONC	CONCRETE	NAD	NORTH AMERICAN DATUM
CONT	CONTINUED OR CONTINUOUS	NAVD	NORTH AMERICAN VERTICAL DATUM
COR	CONTRACTING OFFICER'S REPRESENTATIVE	OC	ON CENTERS
CP	CONTROL POINT (AS IN SURVEY)	OD	OUTSIDE DIAMETER
CPE	CORRUGATED POLYETHYLENE	P	POWER
CPLG	COUPLING	PE	PROFESSIONAL ENGINEER
CSBC	CRUSHED SURFACING BASE COURSE	R	RAD RADIUS
CSTC	CRUSHED SURFACING TOP COURSE	REINF	REINFORCED, REINFORCEMENT
CY	CUBIC YARDS	S	SLOPE, SOUTH
DI	DUCTILE IRON	SF	SQUARE FOOT OR FEET
DIA	DIAMETER	SPEC	SPECIFICATION
DWG	DRAWING	STA	STATION
E	EAST, EASTING	STT	STAINLESS STEEL
ELEV	ELEVATION	SY	SQUARE YARD
EX	EXISTING	TESC	TEMPORARY EROSION AND SEDIMENT CONTROL
FG	FINISHED GRADE	TOW	TOP OF WALL
FL	FLOW LINE, FLANGE	TYP	TYPICAL
		W	WEST, WATER
		W/	WITH
		WSDOT	WASHINGTON STATE DEPARTMENT OF TRANSPORTATION
		WSEL	WATER SURFACE ELEVATION
		YR	YEAR

SHEET NO.	SHEET INDEX	
G-01	COVER SHEET AND GENERAL INFORMATION	1 OF 6
C-01	EXISTING CONDITIONS PLAN	2 OF 6
C-02	IMPROVEMENT PLAN	3 OF 6
C-03	SITE ACCESS	4 OF 6
C-04	GATE REPLACEMENT DETAILS	5 OF 6
C-05	LAKE STATION SCHEMATIC	6 OF 6



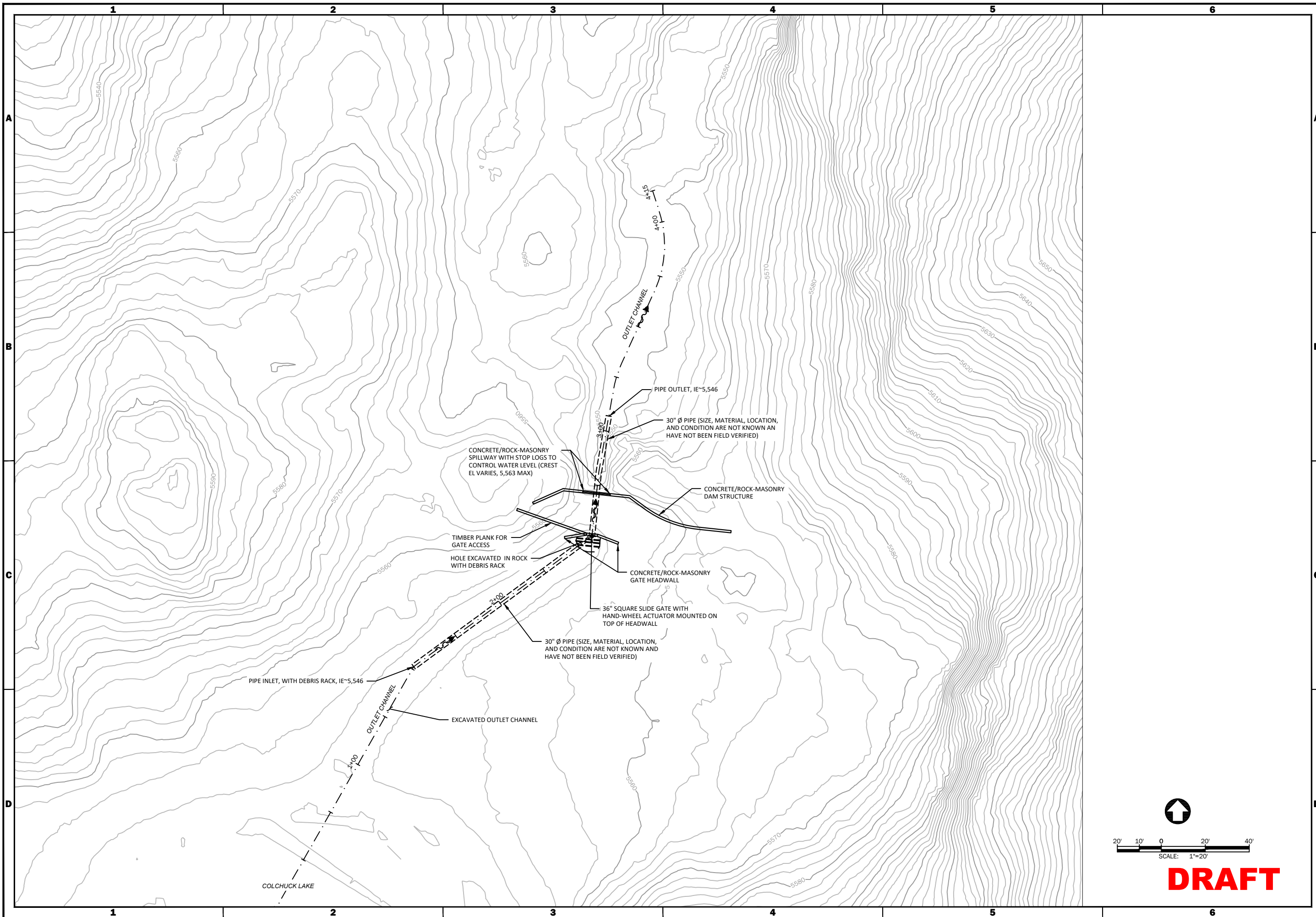
**COVER SHEET AND
GENERAL INFORMATION
COLCHUCK LAKE**
ALPINE LAKES AUTOMATION DESIGN
LEAVENWORTH, WASHINGTON

SHEET
REFERENCE
NUMBER:
G-01
SHEET **1** OF **6**

REV.	DESCRIPTION	DATE	APPR.

DESIGNED BY: BEB	DRAWN BY: CMV	REVISION: -	PROJECT NUMBER: 120045
DATE: Oct-2019	REVISION: -	DATE: Oct-2019 11:31am	User: mscafford

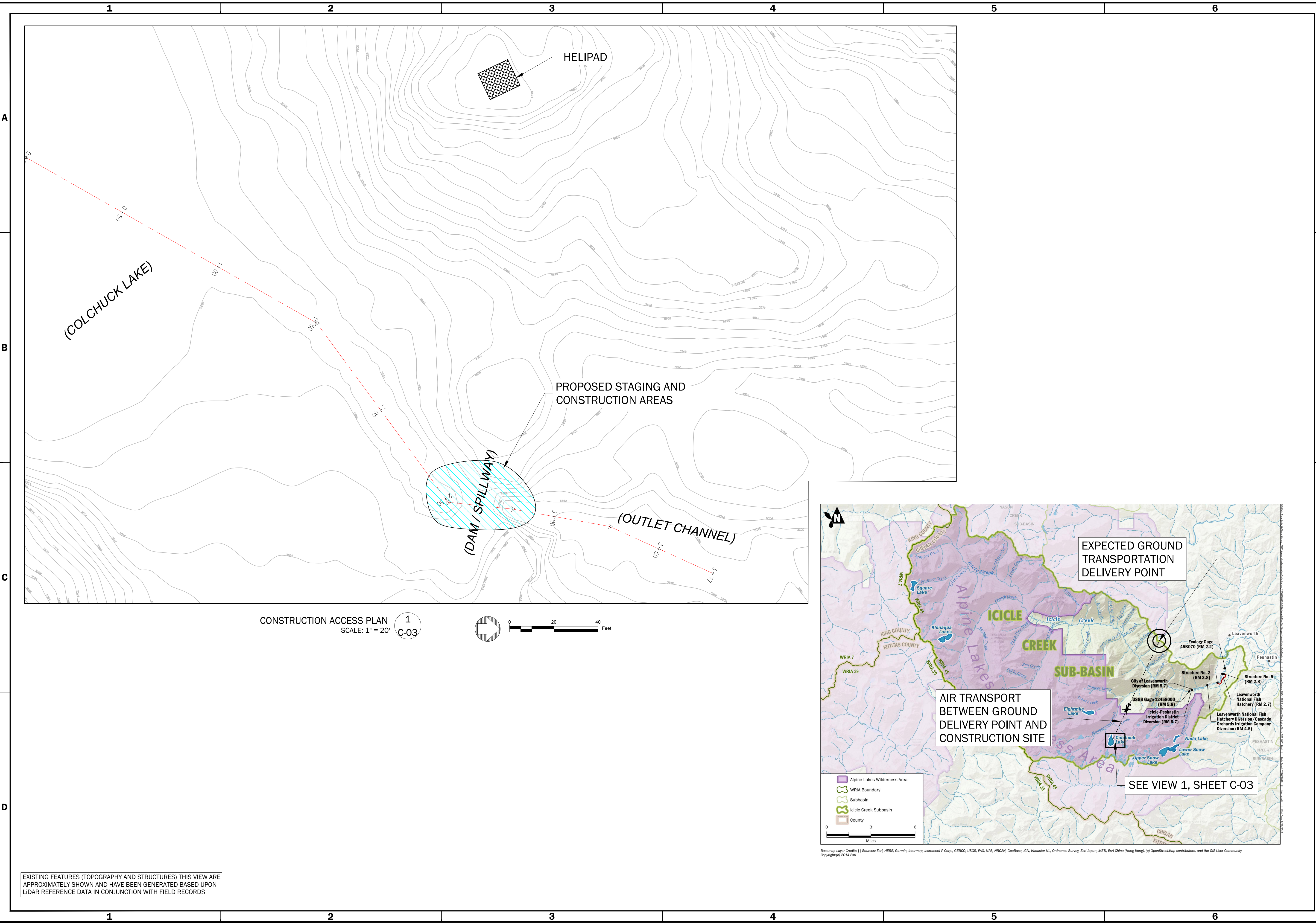
CAD Path: C:\Users\mscafford\ASPECT\workspace\local\temp\colchuck\120045_ColchuckLake\Design\G-01 | Data Sheet: Dec-06-2019 11:31am | User: mscafford



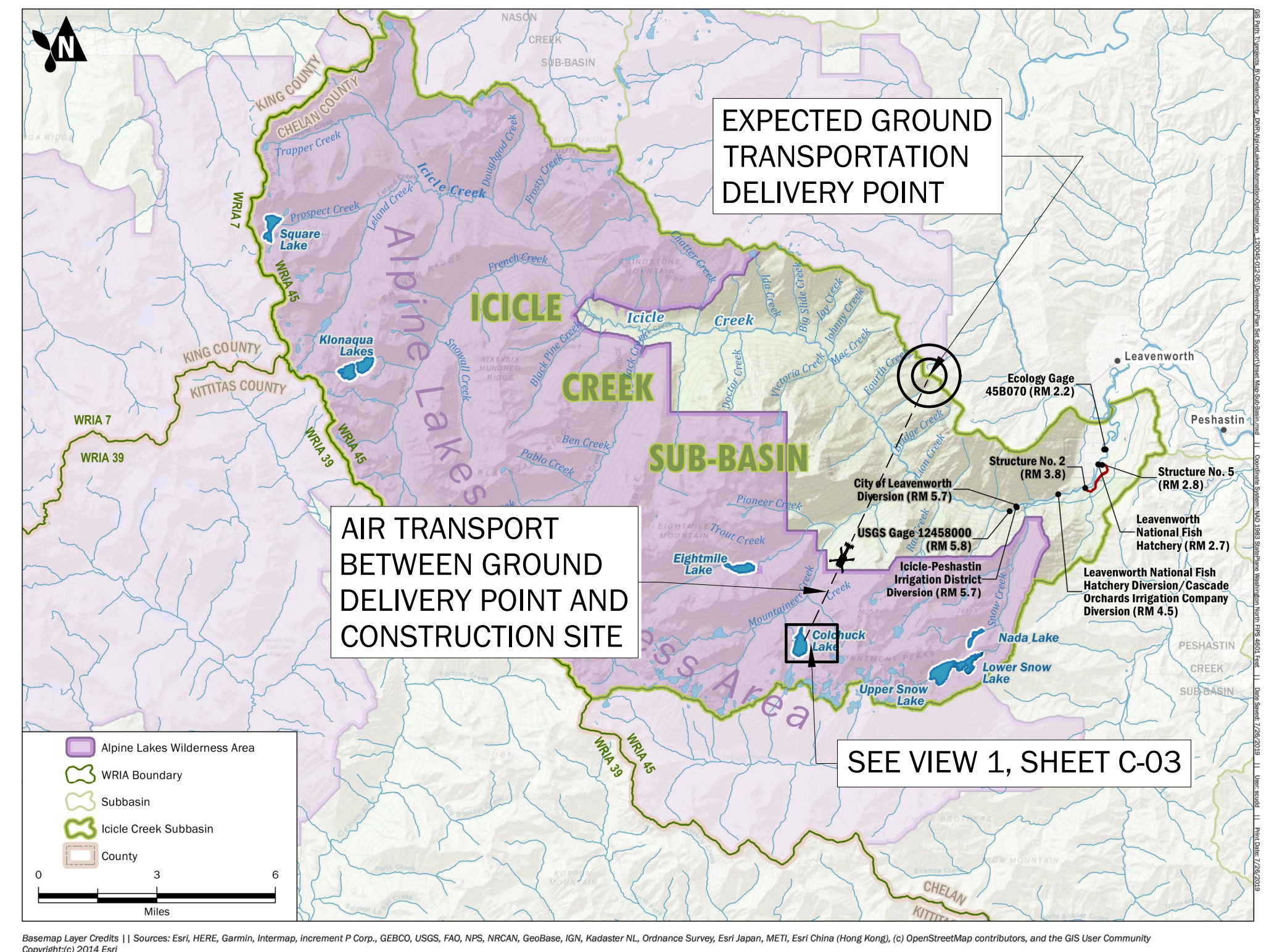
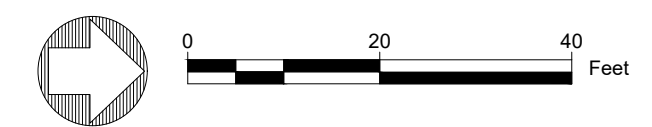
		DESIGNED BY: DWR DRAWN BY: TPG REVISIONS:	PROJECT NUMBER: 120045-021-05 REVISION:	DATE: OCT 2019 SHEET REFERENCE NUMBER:
		EXISTING CONDITIONS PLAN COLCHUCK LAKE ALPINE LAKES AUTOMATION DESIGN LEAVENWORTH, WASHINGTON		
SHEET REFERENCE NUMBER: C-01		SHEET 2 OF 6		
DATE: DATE / APPR		DESCRIPTION		
REV		DATE		

CAD Path: C:\Projects\ColchuckLake\Temp\Drawings\Map\Map18_120045-021-05-PL_ColchuckLake 2-C-01 | Date Sheet: Dec 05, 2019 1:06pm | User: arica

DRAFT



CONSTRUCTION ACCESS PLAN 1
 SCALE: 1" = 20' C-03



AIR TRANSPORT
 BETWEEN GROUND
 DELIVERY POINT AND
 CONSTRUCTION SITE

EXPECTED GROUND
 TRANSPORTATION
 DELIVERY POINT

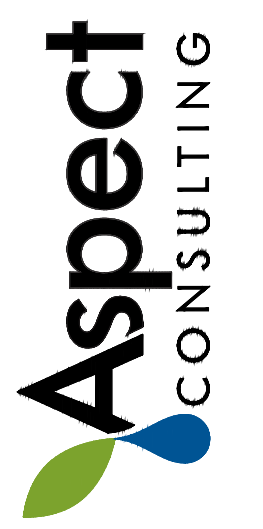
SEE VIEW 1, SHEET C-03

EXISTING FEATURES (TOPOGRAPHY AND STRUCTURES) THIS VIEW ARE APPROXIMATELY SHOWN AND HAVE BEEN GENERATED BASED UPON LIDAR REFERENCE DATA IN CONJUNCTION WITH FIELD RECORDS

REV.	DESCRIPTION	DATE	APPR.

DESIGNED BY:	BEB
DRAWN BY:	CMV
REVISED BY:	

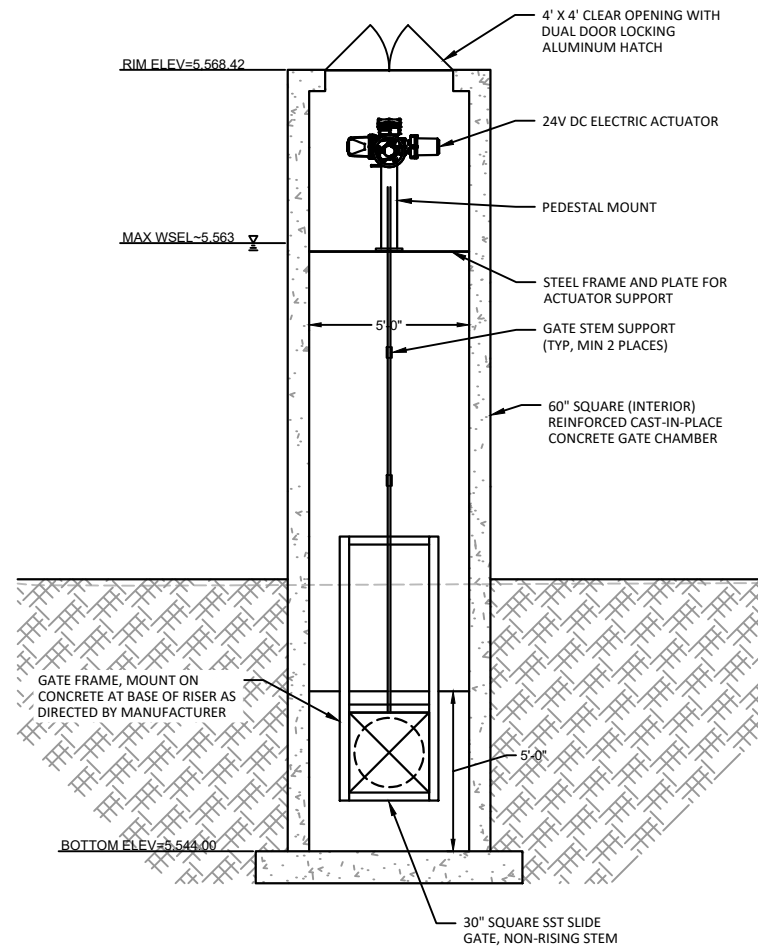
PROJECT NUMBER:	120045
DATE:	Oct-2019
REVISION:	



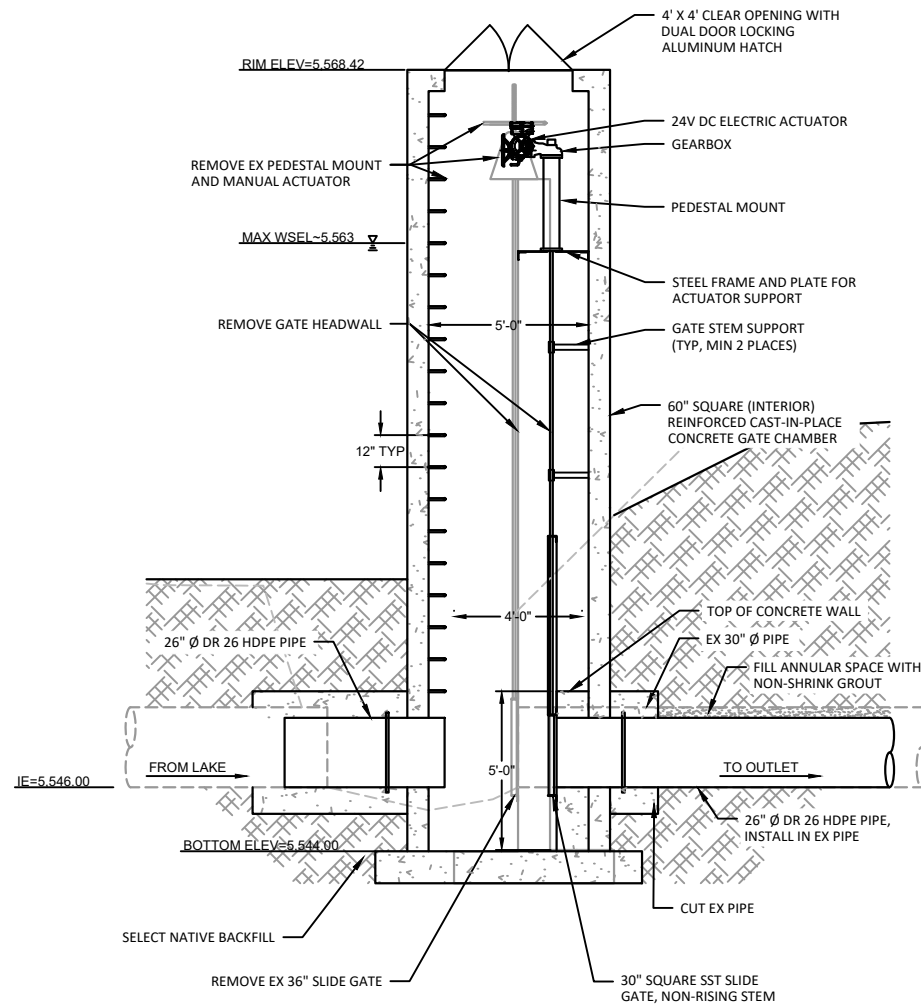
SITE ACCESS
COLCHUCK LAKE
 ALPINE LAKES AUTOMATION DESIGN
 LEAVENWORTH, WASHINGTON

SHEET REFERENCE NUMBER:
C-03
 SHEET 4 OF 6

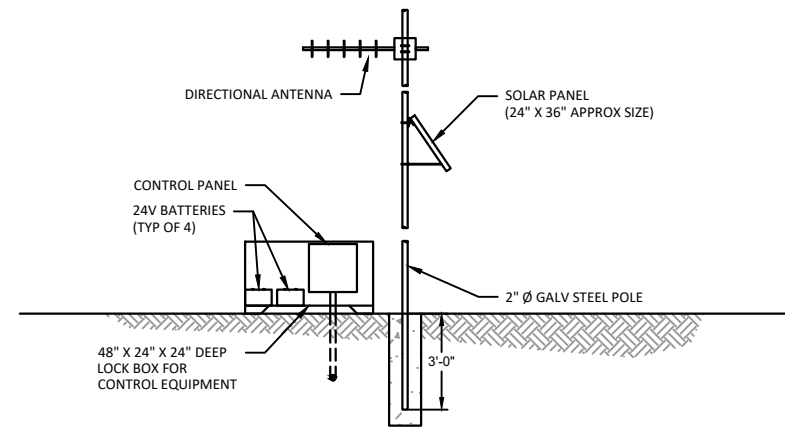
CAD Path: Q:\Chain County 120045\Alpine Lakes Automation Design\Colchuck Lake\305\design\120045_ColchuckLake_SiteAccess_C-03 11 Data Sheet: Oct 30, 2019 2:45pm 11 User: csmallye



1 Gate Replacement Detail
 SCALE: 1"=3'



A Gate Chamber Section
 SCALE: 1"=3'



2 Control Enclosure Detail
 SCALE: 1"=3'

REV	DESCRIPTION	DATE	APPR

ANCHOR QEA

DESIGNED BY: DWR
 DRAWN BY: TPG
 REVISIONS: 1

Aspect CONSULTING

PROJECT NUMBER: 120045-021.05
 DATE: Oct-2019

GATE REPLACEMENT DETAILS

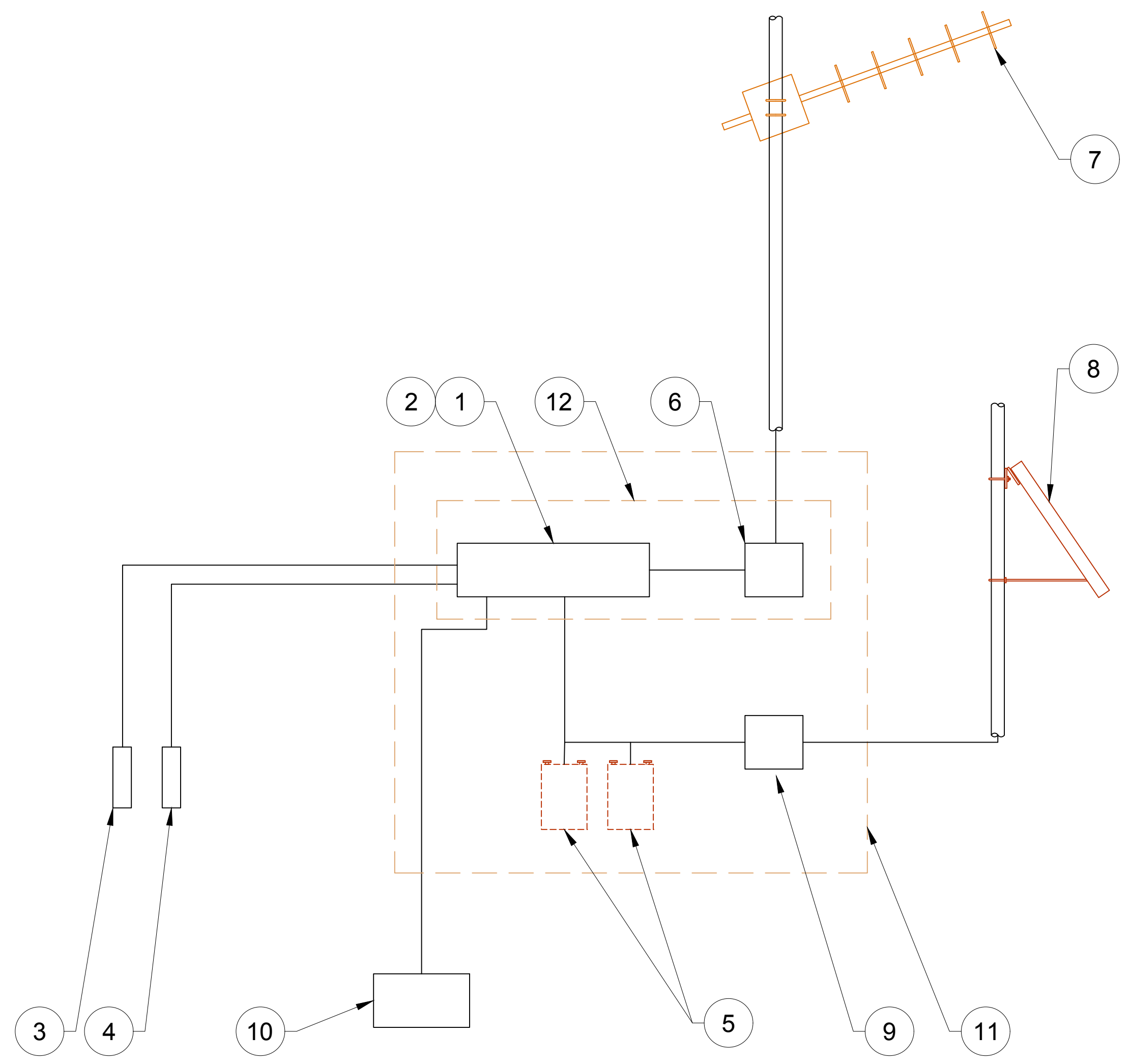
COLCHUCK LAKE
 ALPINE LAKES AUTOMATION DESIGN
 LEAVENWORTH, WASHINGTON

SHEET REFERENCE NUMBER:
C-04
 SHEET 5 OF 6

DRAFT

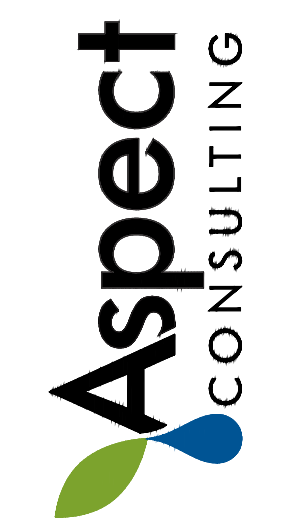
CAD Path: C:\Yrified\0204\0204-PL_Colchuck\0204-PL_Colchuck.dwg, 5-C-04 | Date Sheet: Dec 05, 2019 1:08pm | User: arica

DRAFT



LAKE STATION SCHEMATIC 1
SCALE: NTS C-05

LAKE STATION PARTS LIST	
ITEM NO.	DESCRIPTION
1	DATALOGGER-CAMPBELL SCIENTIFIC CR1000X
2	DATALOGGER 12V REGULATOR CAMPBELL SCIENTIFIC PS150 (ASSUMES WE NEED 24V POWER SUPPLY FOR GATE ACTUATOR, IF WE GO DOWN TO 12V SYSTEM THIS COULD BE ELIMINATED)
3	LAKE LEVEL PRESSURE TRANSDUCER-CAMPBELL SCIENTIFIC CS451
4	OUTFLOW PRESSURE TRANSDUCER-CAMPBELL SCIENTIFIC CS451
5	BATTERY BANK-CROWN 430 AH 24VDC BATTERY BANK (10,320WH) USES 4 BATTERIES (ASSUMES WE ARE USING 24V GATE ACTUATORS)
6	RADIO-MAXON SD-670D
7	RADIO ANTENNA-TELEDESIGN TS0418B6CC-55NF YAGI ANTENNA
8	SOLAR PANEL-SOLARLAND SLP140-24 (24V SOLAR) (ASSUMES WE ARE USING 24 V GATE ACTUATORS)
9	SOLAR CHARGE CONTROLLER-VICTRON ENERGY SMARTSOLAR MPPT 75/10 CHARGE CONTROLLER
10	GATE ACTUATOR
11	RUGGED WEATHER PROOF ENCLOSURE
12	OUR EQUIPMENT (DATALOGGER, RADIO, PS150) WILL BE IN ITS OWN ENCLOSURE-CAMPBELL SCIENTIFIC ENC16/18



LAKE STATION SCHEMATIC AND PARTS LIST
COLCHUCK LAKE
ALPINE LAKES AUTOMATION DESIGN
LEAVENWORTH, WASHINGTON

SHEET REFERENCE NUMBER:
C-05
SHEET 6 OF 6

REV.	DESCRIPTION	DATE	APPR.

DESIGNED BY: BEB	DRAWN BY: CMV	REVISOR BY: -
PROJECT NUMBER: 120045	DATE: Oct-2019	REVISION: -

CAD Path: C:\Users\mcraft\Documents\ASPECT\pp\p\lake\lake\lake\C-05\lake\C-05_ColchuckPlan\lake\C-05 | Date Saved: Dec 06, 2019 8:58am | User: mcraft