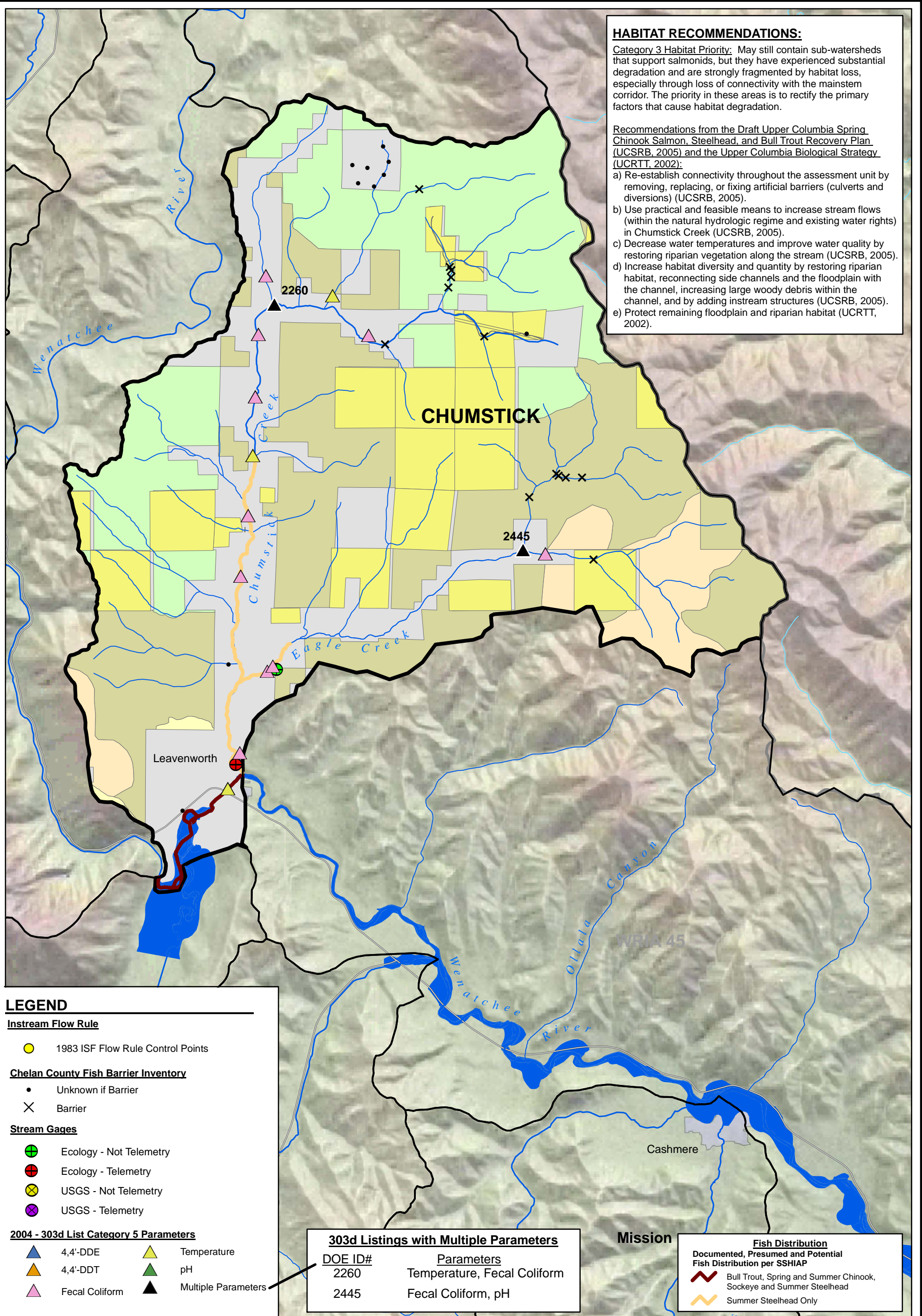


HABITAT RECOMMENDATIONS:

Category 3 Habitat Priority: May still contain sub-watersheds that support salmonids, but they have experienced substantial degradation and are strongly fragmented by habitat loss, especially through loss of connectivity with the mainstem corridor. The priority in these areas is to rectify the primary factors that cause habitat degradation.

Recommendations from the Draft Upper Columbia Spring Chinook Salmon, Steelhead, and Bull Trout Recovery Plan (UCSRB, 2005) and the Upper Columbia Biological Strategy (UCRTT, 2002):

- a) Re-establish connectivity throughout the assessment unit by removing, replacing, or fixing artificial barriers (culverts and diversions) (UCSRB, 2005).
- b) Use practical and feasible means to increase stream flows (within the natural hydrologic regime and existing water rights) in Chumstick Creek (UCSRB, 2005).
- c) Decrease water temperatures and improve water quality by restoring riparian vegetation along the stream (UCSRB, 2005).
- d) Increase habitat diversity and quantity by restoring riparian habitat, reconnecting side channels and the floodplain with the channel, increasing large woody debris within the channel, and by adding instream structures (UCSRB, 2005).
- e) Protect remaining floodplain and riparian habitat (UCRTT, 2002).



LEGEND

Instream Flow Rule

- 1983 ISF Flow Rule Control Points

Chelan County Fish Barrier Inventory

- Unknown if Barrier
- × Barrier

Stream Gages

- ⊕ Ecology - Not Telemetry
- ⊗ Ecology - Telemetry
- ⊗ USGS - Not Telemetry
- ⊗ USGS - Telemetry

2004 - 303d List Category 5 Parameters

- ▲ 4,4'-DDE
- ▲ 4,4'-DDT
- ▲ Fecal Coliform
- ▲ Temperature
- ▲ pH
- ▲ Multiple Parameters

303d Listings with Multiple Parameters	
DOE ID#	Parameters
2260	Temperature, Fecal Coliform
2445	Fecal Coliform, pH

Fish Distribution	
Documented, Presumed and Potential Fish Distribution per SSHAIP	
~	Bull Trout, Spring and Summer Chinook, Sockeye and Summer Steelhead
~	Summer Steelhead Only

USFS Northwest Forest Plan

- Administrative Withdrawn Areas (Not for Harvest)
- USFS - Other
- Late Successional Reserves (Not for Harvest)
- Managed Late Successional Areas (Managed Harvest)
- MATRIX (Active Harvest)
- Congressionally Designated Wilderness

Other Land Use Data

- Channel Migration Zone
- Private Forestland
- WNF Roadless Areas
- Other Land Ownership



Scale in Miles
 Map Projection:
 Washington State Plane,
 North Zone, NAD 83, Feet
 Source: Chelan County
 Conservation District, Chelan
 County Department of Natural
 Resources, Normandeau, USFS,
 USGS, WDFW, WSDOT, WSDOE

CHUMSTICK CREEK SUB-WATERSHED

Chelan/WRIA 45 Watershed Plan/WA

Drawn: AMN	Revised: 6	Date: Apr. 26, 2006	Figure: 9-4
------------	------------	---------------------	--------------------

0431284203F8R06.mxd