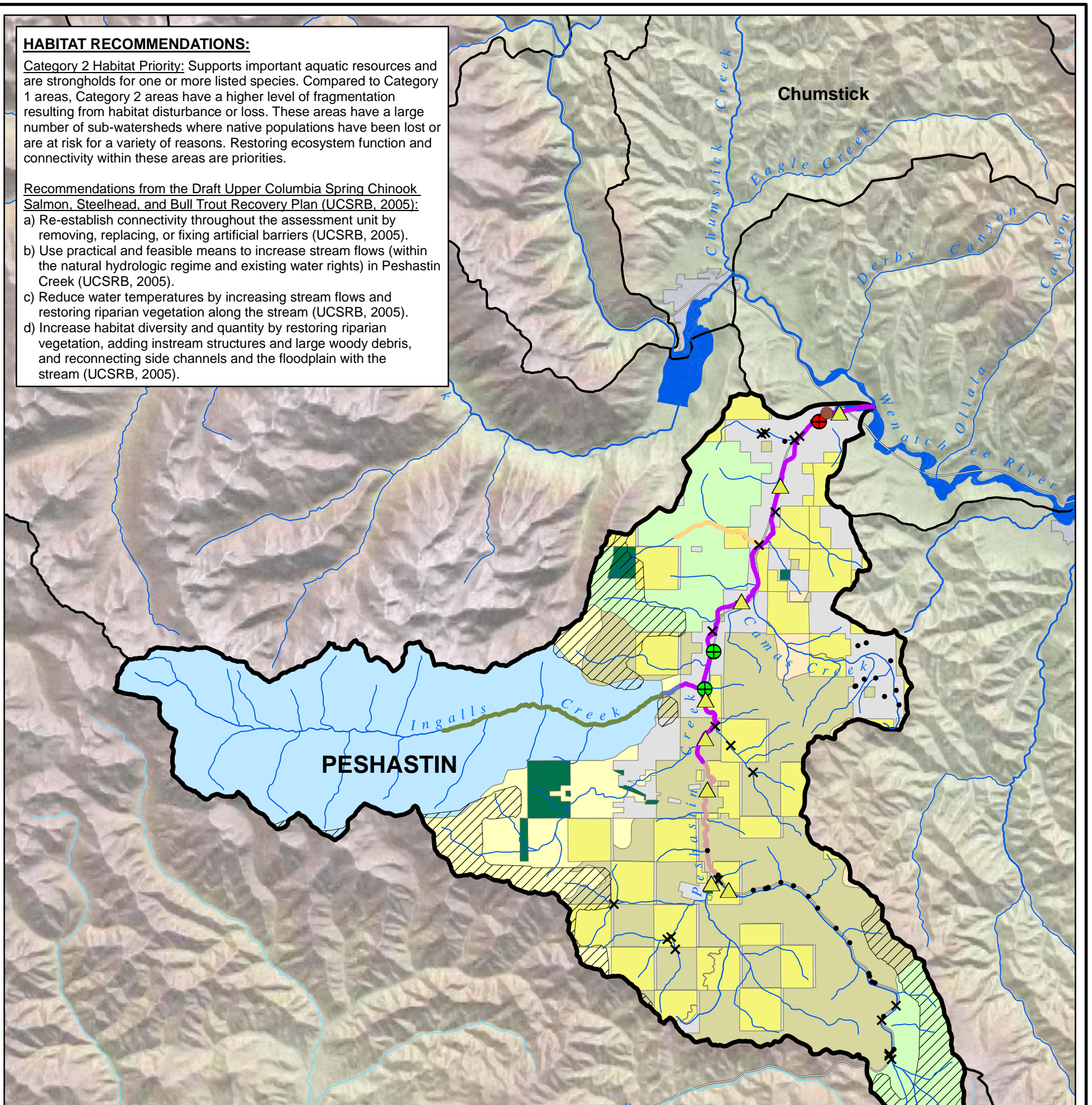


HABITAT RECOMMENDATIONS:

Category 2 Habitat Priority: Supports important aquatic resources and are strongholds for one or more listed species. Compared to Category 1 areas, Category 2 areas have a higher level of fragmentation resulting from habitat disturbance or loss. These areas have a large number of sub-watersheds where native populations have been lost or are at risk for a variety of reasons. Restoring ecosystem function and connectivity within these areas are priorities.

Recommendations from the Draft Upper Columbia Spring Chinook, Steelhead, and Bull Trout Recovery Plan (UCSRB, 2005):

- a) Re-establish connectivity throughout the assessment unit by removing, replacing, or fixing artificial barriers (UCSRB, 2005).
- b) Use practical and feasible means to increase stream flows (within the natural hydrologic regime and existing water rights) in Peshastin Creek (UCSRB, 2005).
- c) Reduce water temperatures by increasing stream flows and restoring riparian vegetation along the stream (UCSRB, 2005).
- d) Increase habitat diversity and quantity by restoring riparian vegetation, adding instream structures and large woody debris, and reconnecting side channels and the floodplain with the stream (UCSRB, 2005).



LEGEND

Instream Flow Rule

- Proposed New ISF Control Points
- 1983 ISF Flow Rule Control Points

Chelan County Fish Barrier Inventory

- Unknown if Barrier
- ✕ Barrier

Stream Gages

- ⊕ Ecology - Not Telemetry
- ⊕ Ecology - Telemetry
- ⊗ USGS - Not Telemetry
- ⊗ USGS - Telemetry

2004 - 303d List Category 5 Parameters

- ▲ 4,4'-DDE
- ▲ 4,4'-DDT
- ▲ Fecal Coliform
- ▲ Temperature
- ▲ pH
- ▲ Multiple Parameters

USFS Northwest Forest Plan

- Administrative Withdrawn Areas (Not for Harvest)
- USFS - Other
- Late Successional Reserves (Not for Harvest)
- Managed Late Successional Areas (Managed Harvest)
- MATRIX (Active Harvest)
- Congressionally Designated Wilderness

Other Land Use Data

- Channel Migration Zone
- Private Forestland
- WNF Roadless Areas
- Other Land Ownership

Fish Distribution
Documented, Presumed and Potential Fish Distribution per SSHIAP

- Bull Trout Only
- Bull Trout and Spring Chinook
- Bull Trout, Spring Chinook and Summer Steelhead
- Bull Trout and Summer Steelhead
- Summer Steelhead Only

0 2.5
 Scale in Miles
 Map Projection:
 Washington State Plane,
 North Zone, NAD 83, Feet
 Source: Chelan County
 Conservation District, Chelan
 County Department of Natural
 Resources, Normandeau, USFS,
 USGS, WDFW, WSDOT, WSDOE

This figure was originally produced in color. Reproduction in black and white may result in loss of information

PESHASTIN CREEK SUB-WATERSHED
 Chelan/WRIA 45 Watershed Plan/WA

Drawn: AMN Revision: 5 Date: Apr. 26, 2006 Figure: **9-3**