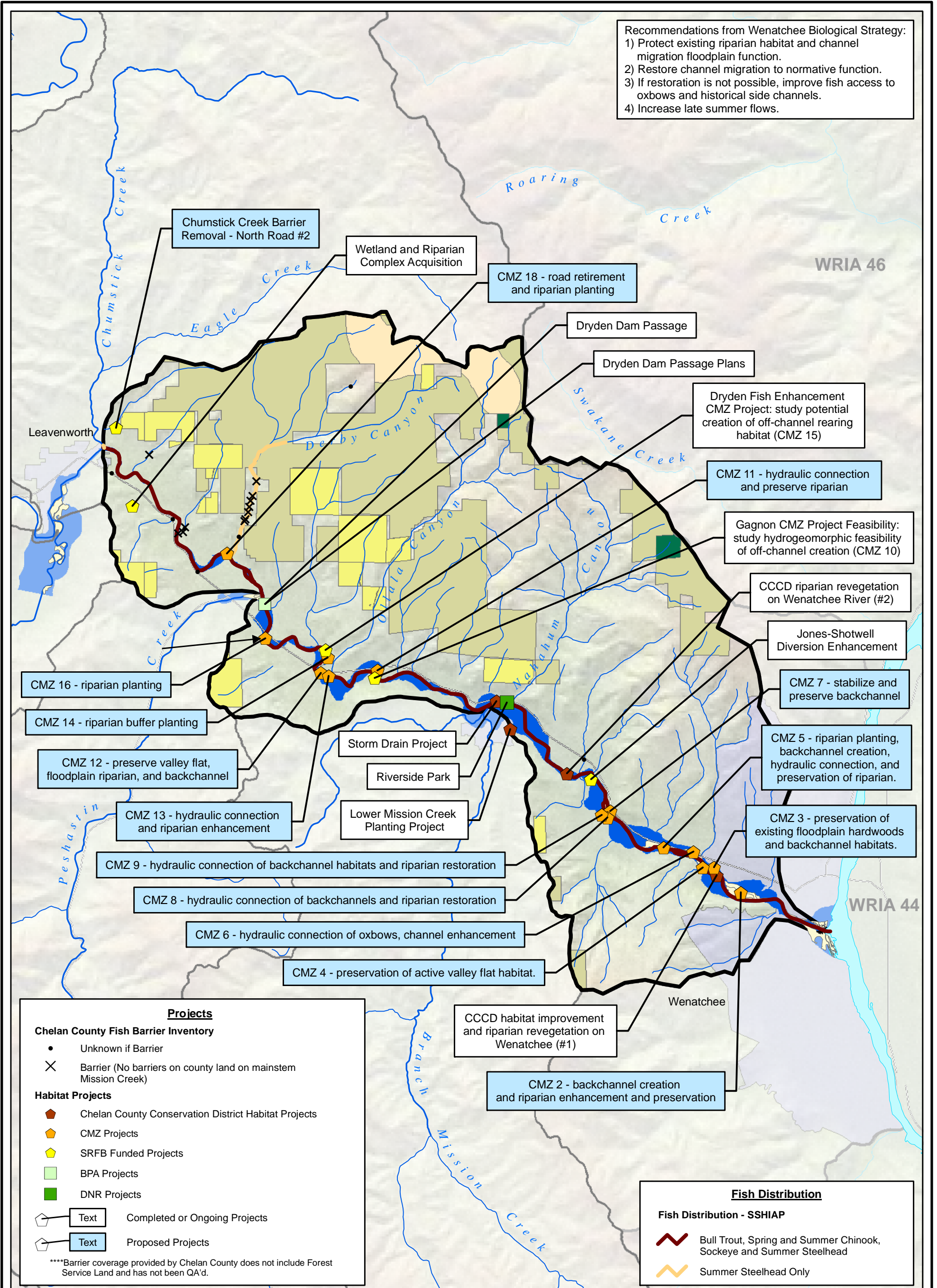


Recommendations from Wenatchee Biological Strategy:  
 1) Protect existing riparian habitat and channel migration floodplain function.  
 2) Restore channel migration to normative function.  
 3) If restoration is not possible, improve fish access to oxbows and historical side channels.  
 4) Increase late summer flows.



**USFS Northwest Forest Plan**

- Administrative Withdrawn Areas (Not for Harvest)
- USFS - Other
- Late Successional Reserves (Not for Harvest)
- Managed Late Successional Areas (Managed Harvest)
- MATRIX (Active Harvest)
- Congressionally Designed Wilderness

**Other Land Use Data**

- Channel Migration Zone
- Private Forestland
- WNF Roadless Areas
- Other Land Ownership

Scale in Feet  
 0 10,000  
 Map Projection:  
 Washington State Plane,  
 North Zone, NAD 83, Feet  
 Source: Chelan County  
 Conservation District, Chelan  
 County Department of Natural  
 Resources, Normandeau, USFS,  
 USGS, WDFW, WSDOT, WSDOE

**Lower Wenatchee Sub-Watershed: Fish Distribution and Habitat Projects**  
 Chelan/WRIA 45 Watershed Plan/WA

Drawn: ATB	Revised: 4	Date: June 30, 2005	Figure: <b>2</b>
------------	------------	---------------------	------------------

This figure was originally produced in color. Reproduction in black and white may result in loss of information