

# Nason Ridge Community Forest



# September 4<sup>th</sup> Meeting Agenda

- 6:00-6:15: Welcome, Introductions, and Updates
- 6:15-6:35: Update on Aquatics Chapter
- 6:35-7:15: Roads Chapter – Outline and Objectives
- 7:15-7:50: Group Discussion on Roads Objectives
- 7:50-8:00: Wrap-up and Next Steps



# Updates

- NPS RTCA (recreation planning assistance grant) is reviewing application and will notify in late September
- Chelan County Commissioner's open house planned for October 11<sup>th</sup>, to hear from the community on what is the perceived role for Chelan County in the Nason Ridge Community Forest

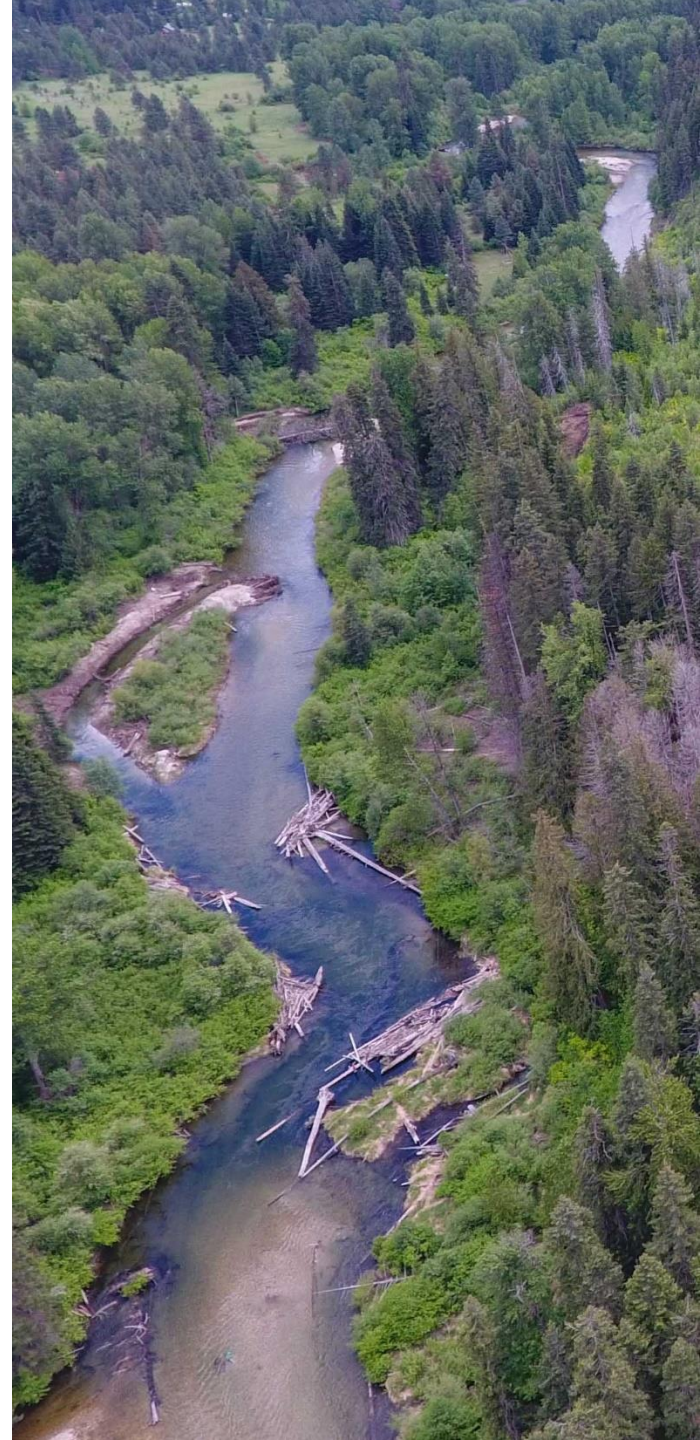


# Aquatics Chapter

## Aquatic Management Objectives

From the July 10<sup>th</sup> meeting:

1. Protects wildlife species, including ESA listed salmonids
2. Protects/restores aquatic resources and water quality
3. Creates/maintains healthy forests that provide habitat for wildlife, a healthy, functioning watershed, and fire resiliency
4. Provides opportunity for education of natural history and land management; living classroom for all education levels



## Aquatic Management Goals:

1. Protects wildlife species, including ESA listed salmonids
2. Protects/restores aquatic resources and water quality
3. Creates/maintains healthy forests that provide habitat for wildlife, a healthy, functioning watershed, and fire resiliency

## Proposed Management Objectives

1. *Maintain/protect existing high quality forested areas*
2. *Enhance riparian vegetation as needed in order to facilitate sediment removal and erosion control, water quality, moderation of shade and stream temperature, and habitat structural diversity.*
3. Provides opportunity for education of natural history and land management; living classroom for all education levels
4. *Reduce the road density to restore the natural hydrologic cycle within Nason creek and reduce fine sediment inputs to Nason creek.*

# Chapter Outline

## Objectives

- Current conditions
  - Nason Creek
  - Kahler Creek
- Other intermittent streams and wetlands
- Aquatic species and aquatic species of concern
- Desired future conditions
- Short-term management and restoration activities (1-10 years)
- Long-term management and restoration activities (11-20 years)



# Aquatic Chapter – Existing Conditions

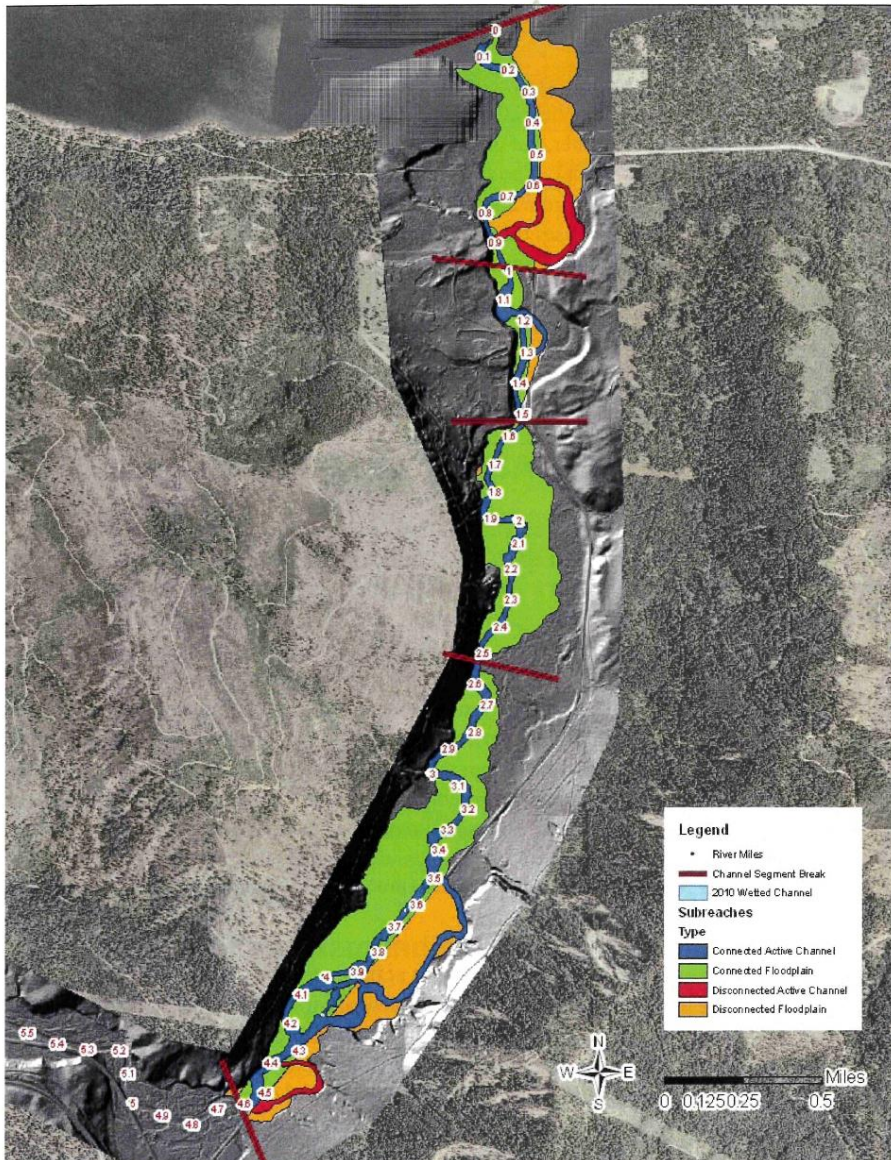


Figure 6. Hydraulic connectivity between the active channel and floodplain areas

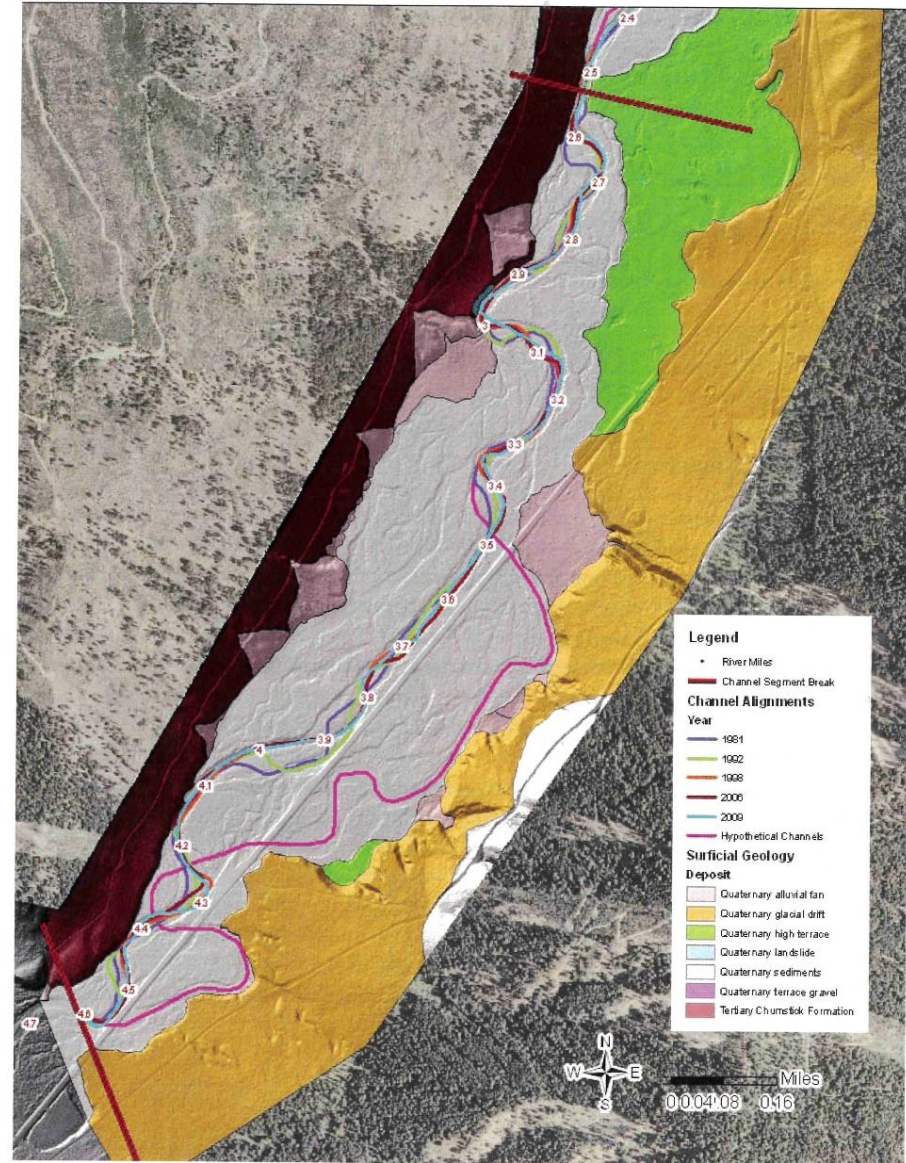


Figure 9. Channel Segment A: Historical channel alignments and hypothetical channel alignment interpreted from 2006 LiDAR hillshade



# Aquatic Chapter Existing Conditions Kahler Creek and Seasonal Streams





# Aquatic Chapter – Aquatic species

## Steelhead Spawning Locations (2011-2013)





# Aquatic Chapter – Aquatic species

## Steelhead Spawning Locations (2011-2013)

Nason creek contains 22% of spring Chinook spawning redds in the Wenatchee basin



# Aquatic Chapter – Considerations for future management actions – stream temperature

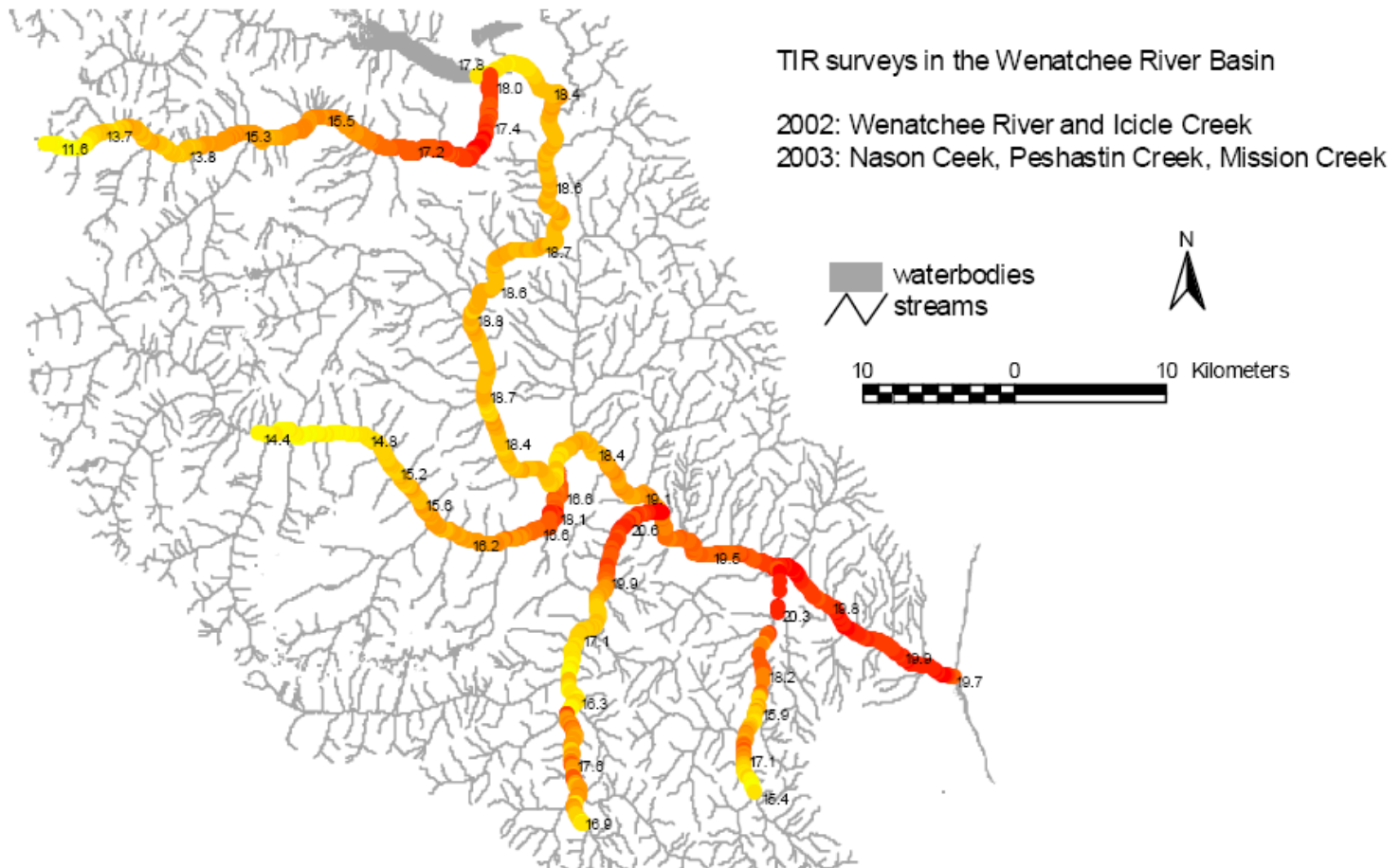
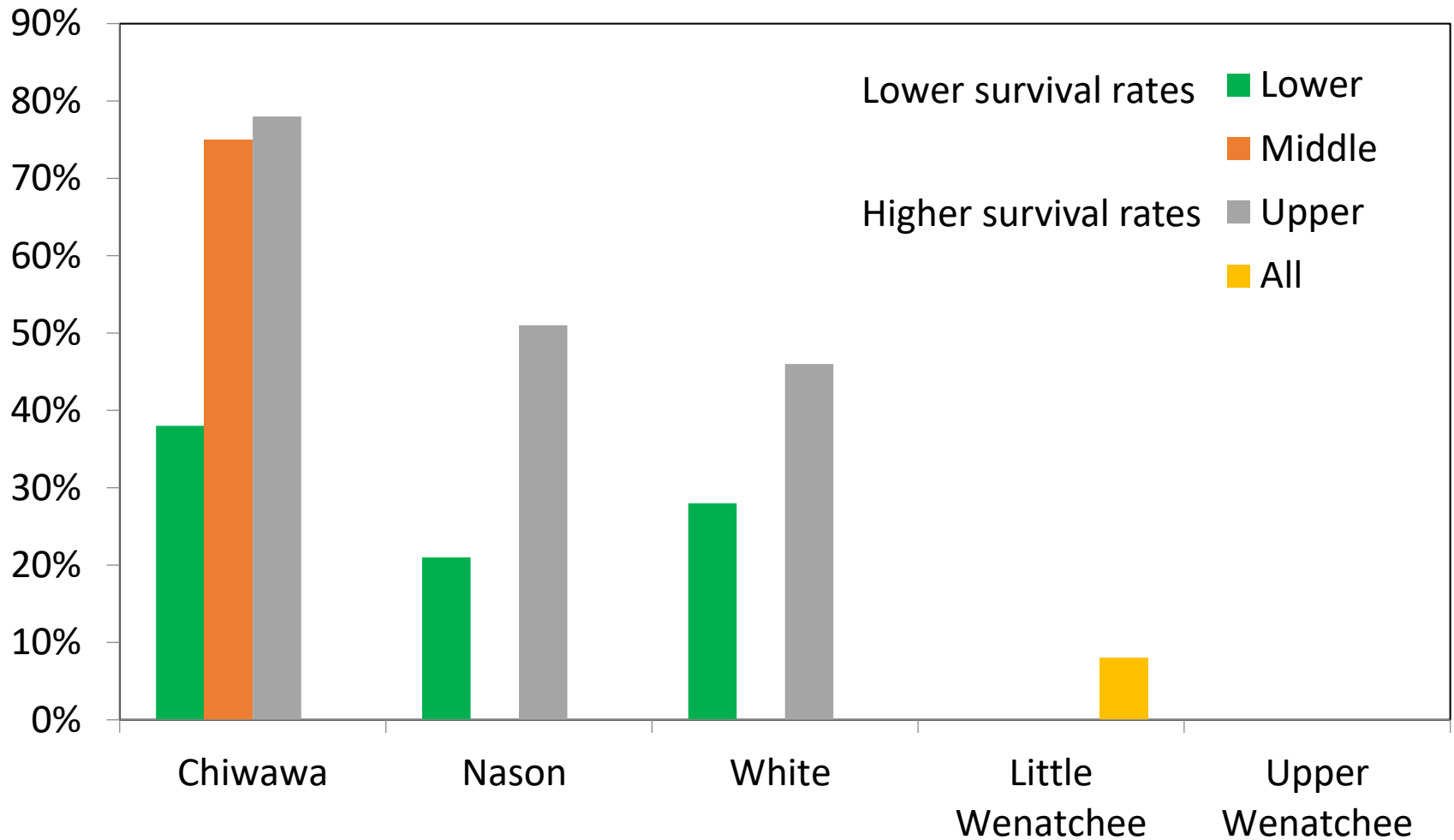


Figure 20. TIR surveys in the Wenatchee River basin in 2002 and 2003.

# Aquatic Chapter – Considerations for future management actions – spring Chinook survival

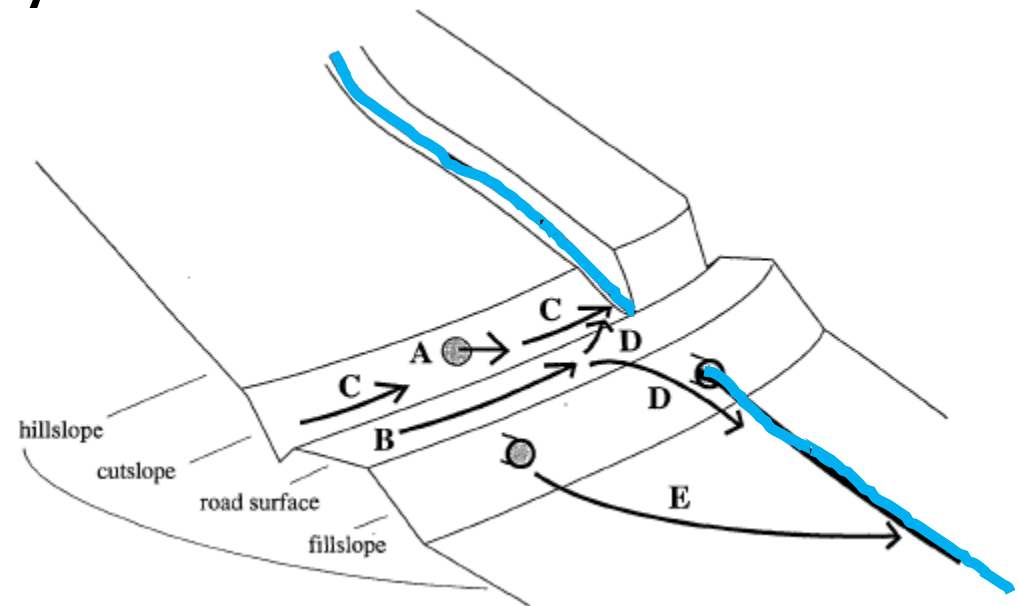
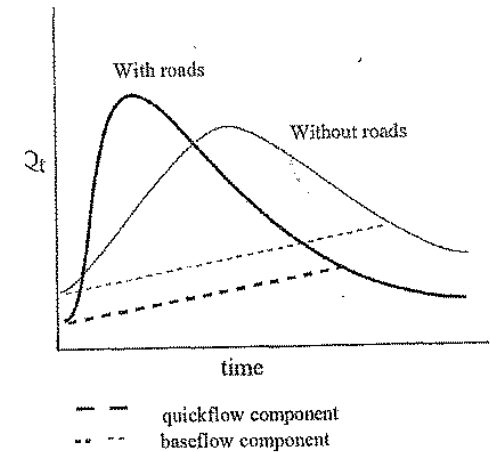




# Aquatic Chapter – Considerations for future management of roads to reduce impact to aquatic habitat

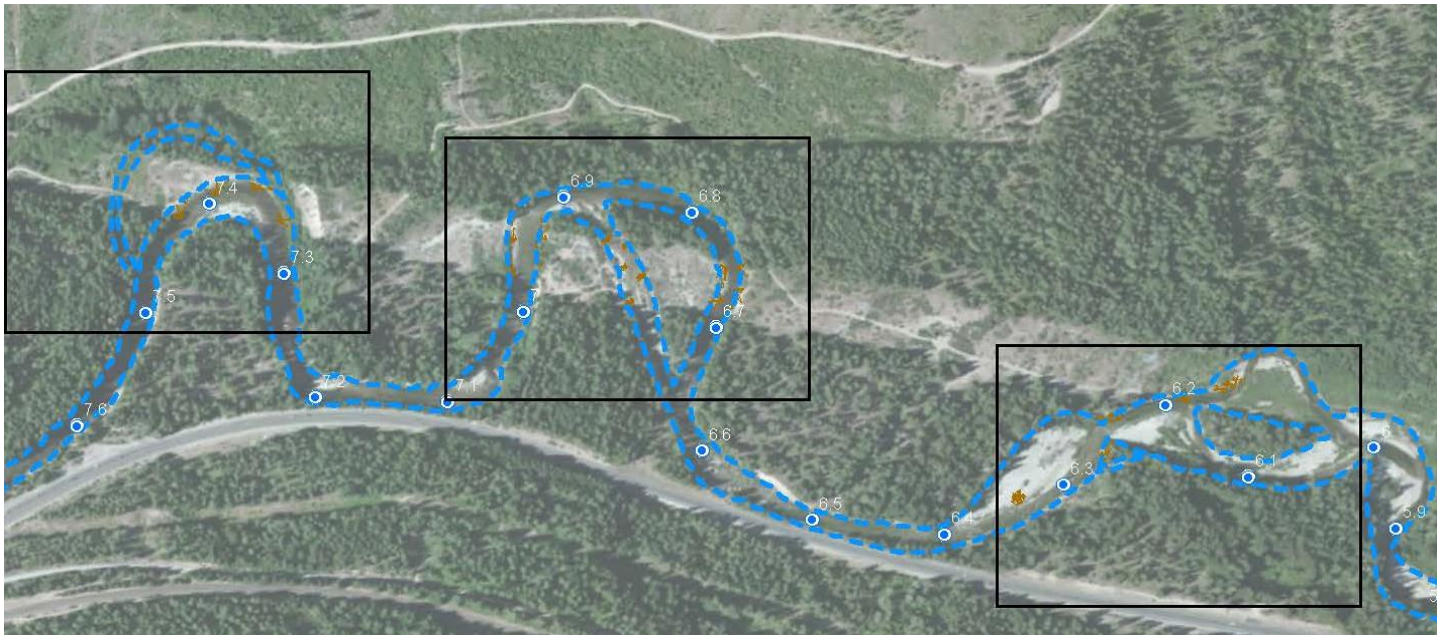
- Stream hydrology/infiltration
- Fine sediment
- Riparian conditions
- Floodplain connectivity
- Habitat connectivity

Basin hydrograph



# Short Term Management Actions

1. Kahler Reach – improving channel bed structure and form, floodplain connectivity, and riparian conditions
2. Reduce fine sediment inputs and restore infiltration
  - Stormproofing
  - De-commissioning and/or conversion of roads to trails





# Long Term Management Actions

- Evaluation of riparian habitat
- Improve roads mapping data
- Other suggestions?

# Roads Chapter

## Objectives from July 10<sup>th</sup> meeting

- Provides access to enjoy open space and recreation opportunity
- Protects natural resources through thoughtful planning and management
- Protects/restores aquatic resources and water quality
- Provides opportunity for diverse uses of forestland
- Enables continues noxious weed management

*To reduce overall road density while maintaining access for forest health management, fire, and recreation.*

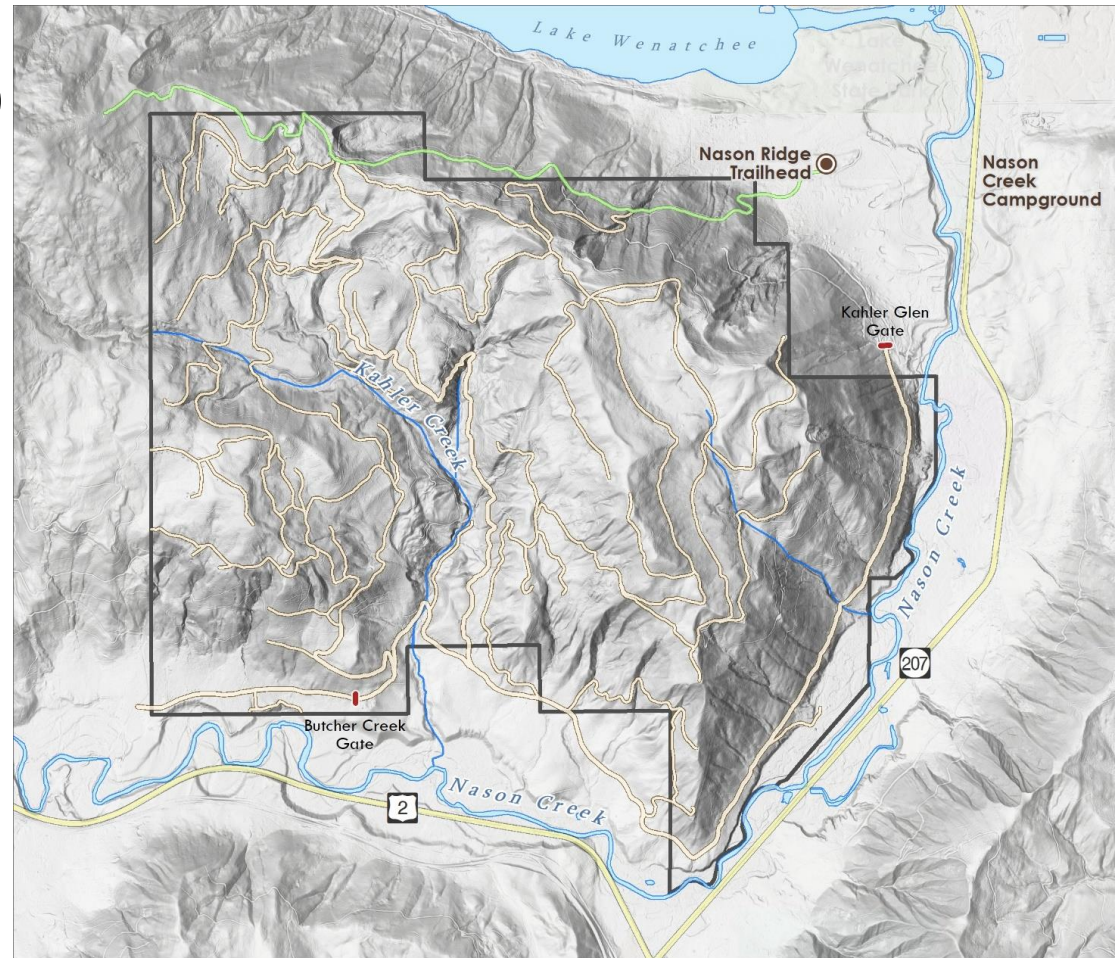


# Roads Chapter Outline

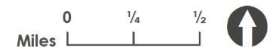
- Objectives
- Current road network
- Anticipated future needs /remaining questions
- Annual maintenance
- Emergency maintenance plan
- Short-term management activities (1-10 years)
- Long-term management activities (11-20 years)

# LiDAR Roads Map

- Map Source/Accuracy
- >30 miles
- Access
- USFS Cost Share
- Recreation

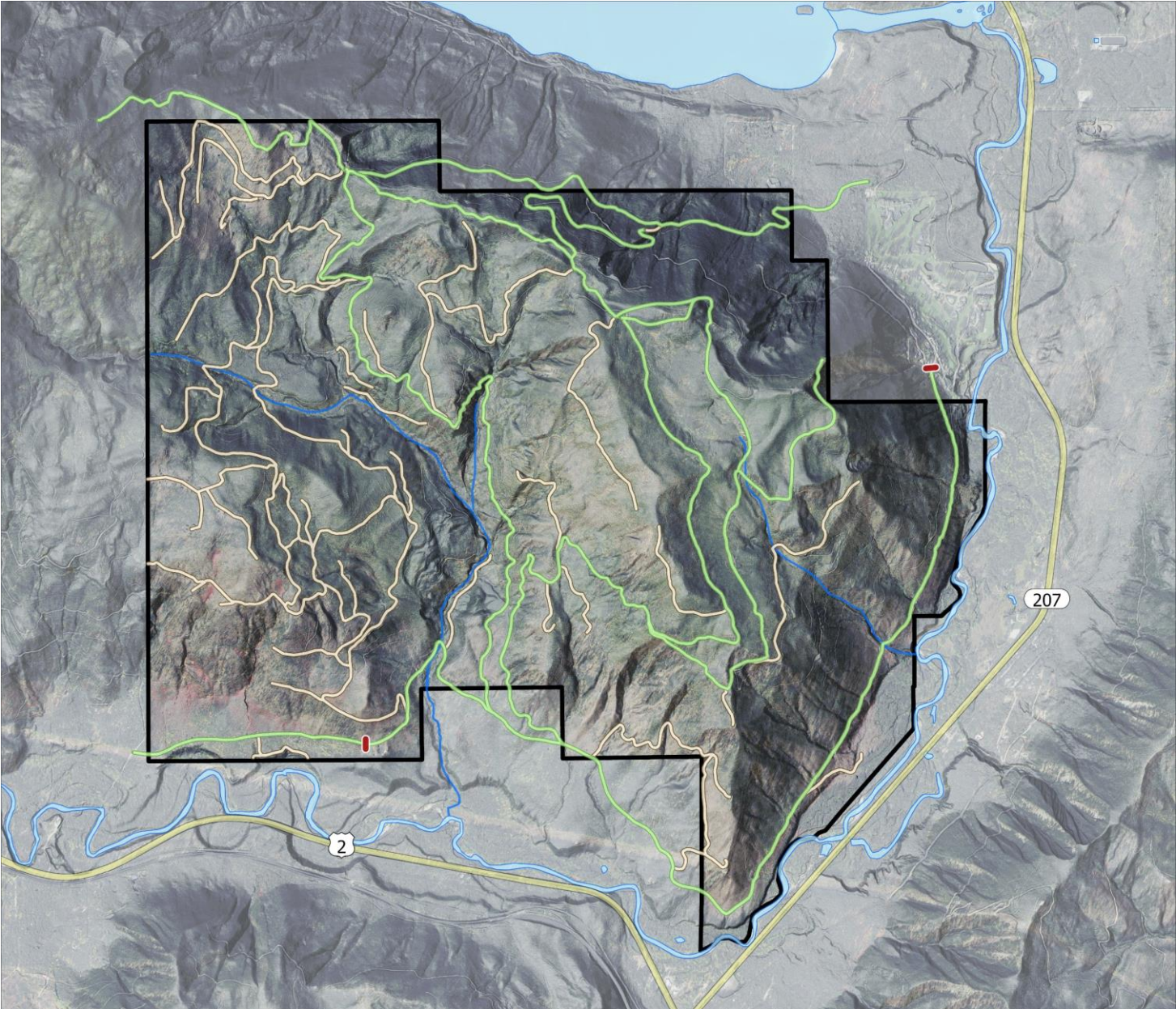


- ☒ Nason Ridge Property
- 🛣️ Forest Roads
- 🌿 Recreation Trails
- 🛣️ Highways
- 🌊 Lakes
- 🌊 Streams
- 🚧 Gates





# Current Recreational Use





# Annual Maintenance Needs





# Short Term Management Actions - Stormproofing



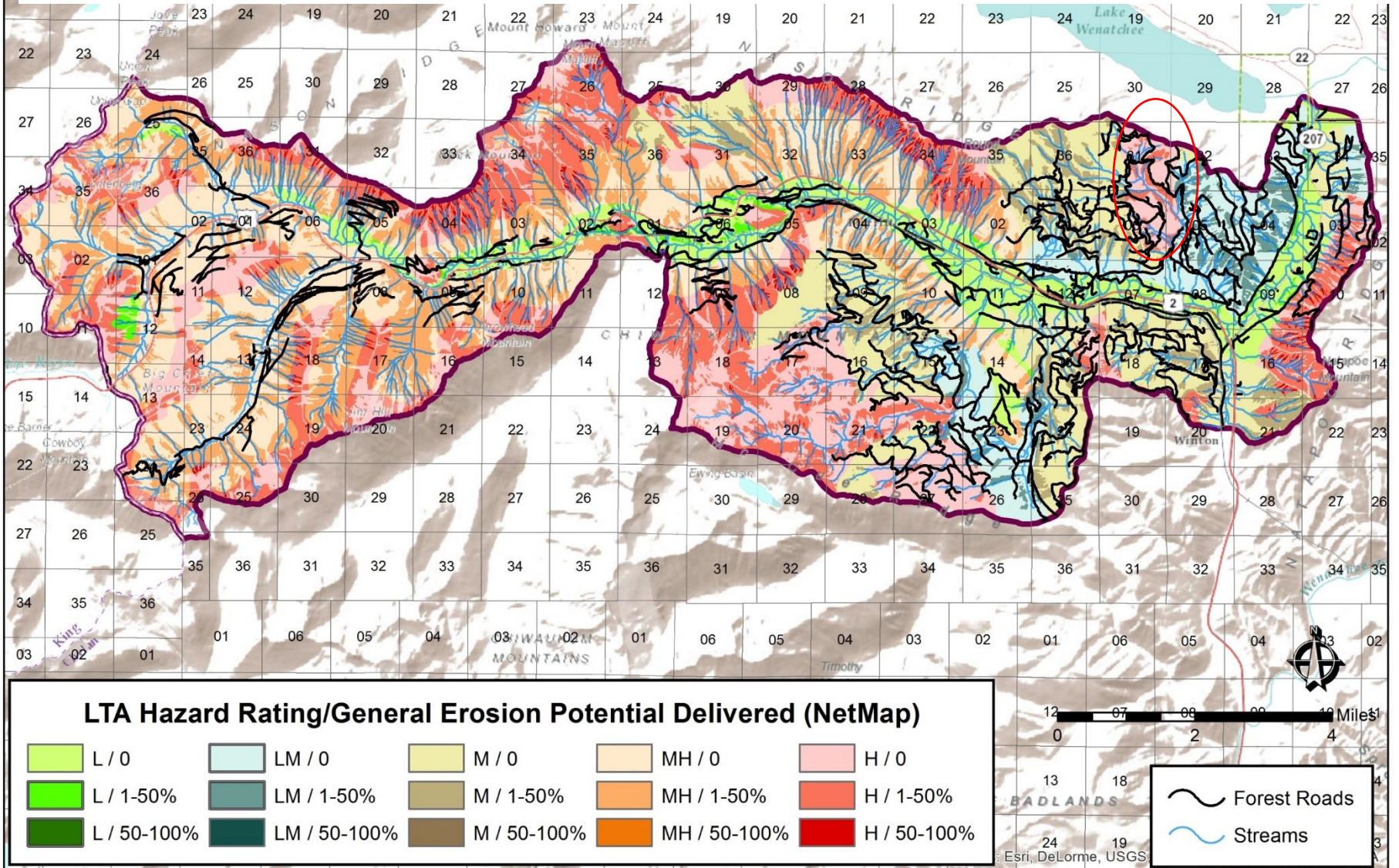






# Which roads have impacts to aquatic habitat?

## Evaluation of erosion potential and slope hazard failure ratings.

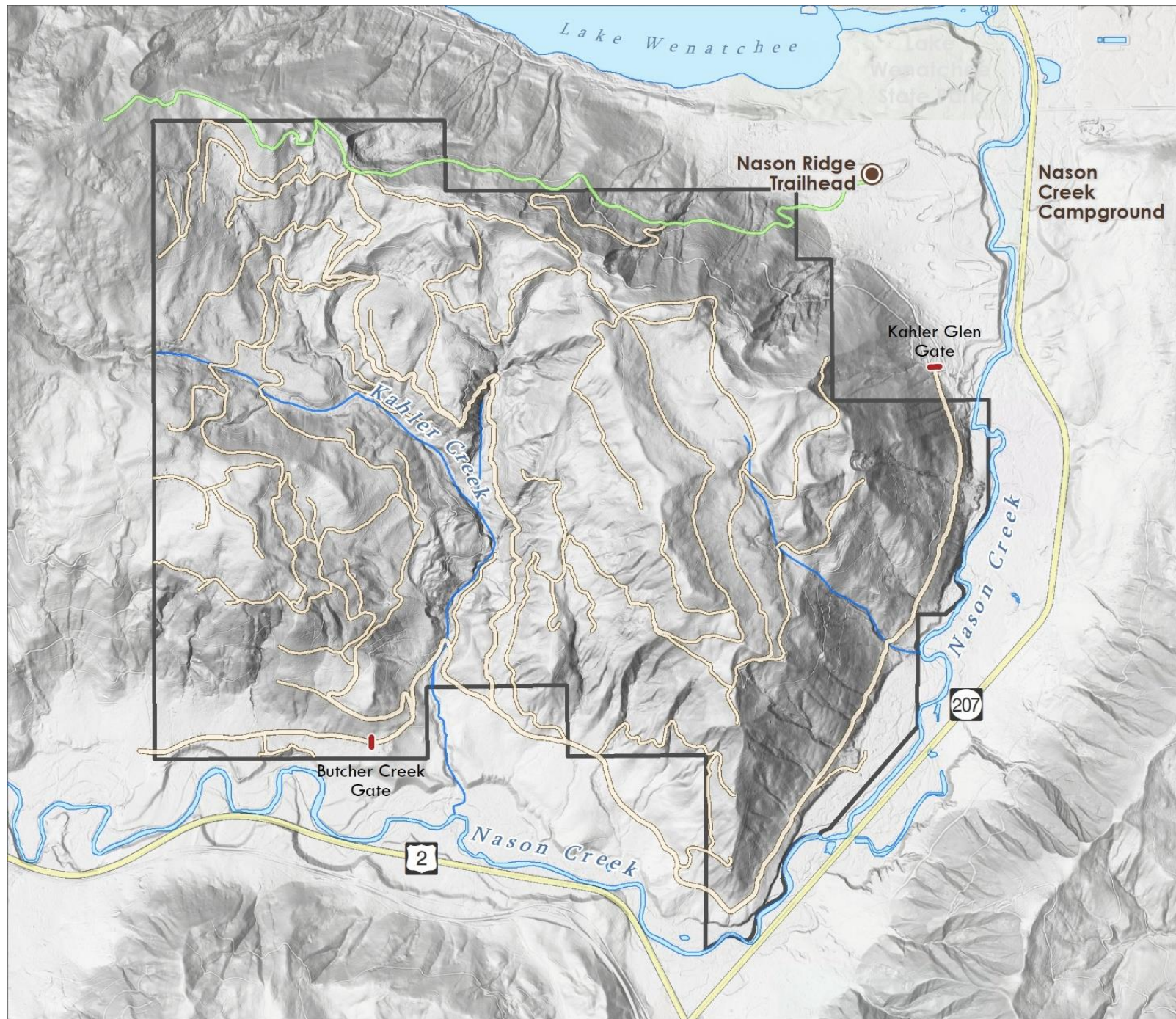




# Evaluation of aquatic impacts









# Long Term Management Actions

- Improve aquatic habitat near road-stream crossings
- Other actions?



# Wrap Up and Next Steps

- October Meeting: Draft Plan Review and Community Engagement/Decision Making
- October 11<sup>th</sup> Open House with County Commissioners
- Review of draft text for Chapters 1-5