

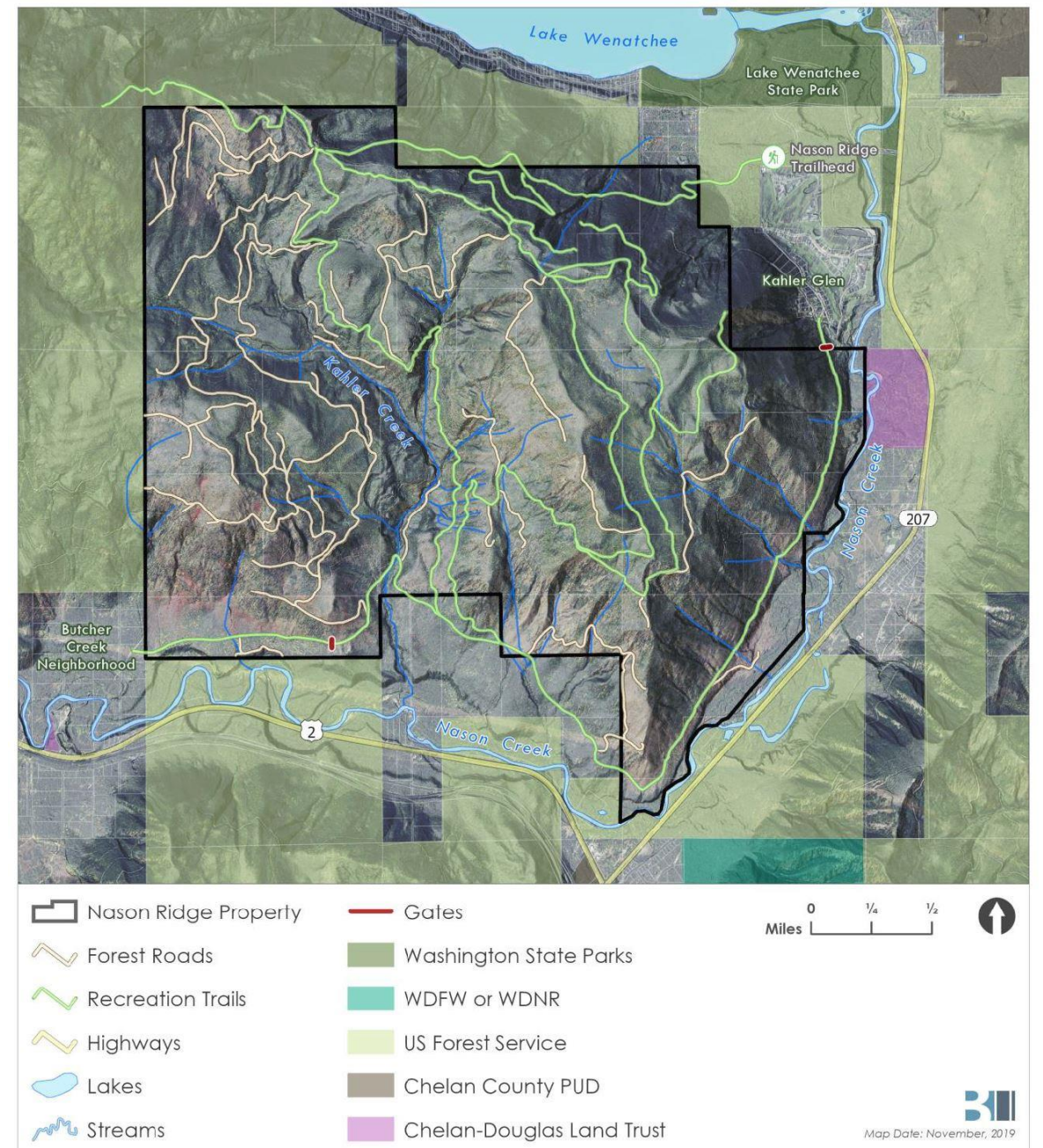
Nason Ridge Community Forest Stewardship Committee

Recreation and Access Planning Quarterly Meeting

March 8th, 2023

Agenda

- Welcome and Introductions
- Community Forest Updates
 - Planning Framework Review
 - Subgroup Meeting Review
 - Community Forest Project Updates
- Upcoming Meetings and Planning Strategy
 - Introduce WCSI
- Planning Topic: Concessions, Special Uses, Fees
- Round Table Input
- Wrap Up and Next Steps



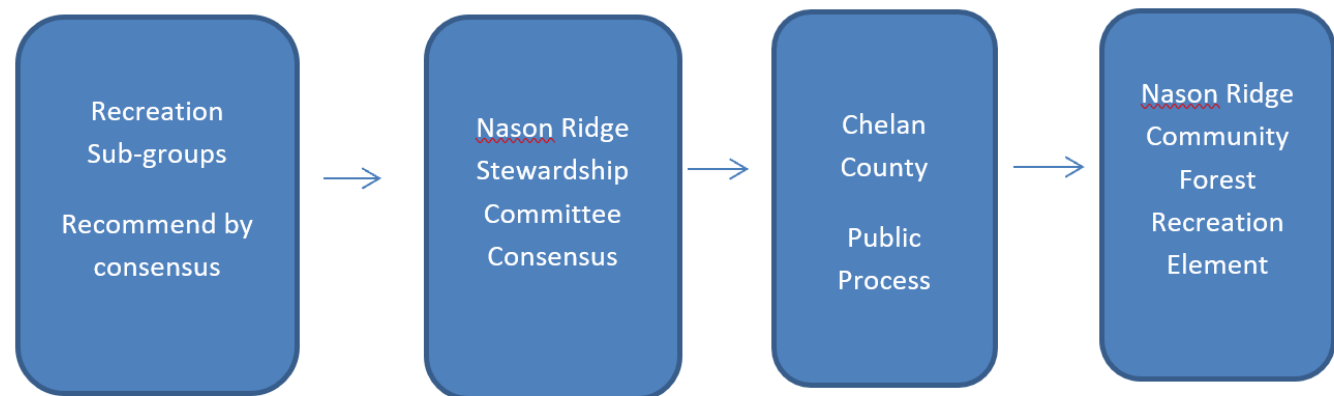
Community Forest Updates

- Development of Planning Framework

Organization	Representative
Lake Wenatchee Fire and Rescue	David Walker, Mike Stanford
Kahler Glen Association	Ralph Leslie, Dave Millard
Kahler Glen residents	Tim and Mary Gallagher, Bill and Nancy Miller, Dennis and Anne Gilbert
Stellerwood residents	Eric Prestbo
Lake Wenatchee Info	Rob Shurtleff, George Wilson
Nasonview landowner	Rollie Schmitt
Butcher Creek residents	John Meriwether, Sarah Smith, Amber Zimmerman, David Walker, Mike McCausland
Lake Wenatchee Residents	Ray Aspiri
Chelan-Douglas Land Trust	David Morgan, Hanne Beener
Priest Rapids Coordinating Committee/Tributary Committee/Yakama Nation	Brandon Rogers
Alpine Lakes High Camp	Justin Donahue
Basecamp Cascadia	Katie Strahl
Chelan County Natural Resource Department	Erin McKay, Mike Kaputa
Washington Department of Fish and Wildlife	
Forest Health and Wildlife Specialist	Bill Gaines, Andrea Lyons
59er Diner	Joe Cannata
Washington State Parks	Matt Morrison, Trevor Wylie, Deb Wadkins
Washington Department of Transportation	Scott Cervin, Kate Toffelson
Cascadia Conservation District	Patrick Haggerty, Amanda Newell
Trust for Public Land	Ann Welz
Priest Rapids Coordinating Committee/Tributary Committee/NOAA-Fisheries	Justin Yeager
Chelan County Commissioner	Shon Smith
Wenatchee Valley TREAD	Matt Lyons
Plain Valley Ski Trails	Rob Whitten, Christie Saugen
Leavenworth Winter Sports Club/Evergreen	James Munly
Nason Area Hunters	Chad Spies, Sean Simmons
Audubon Society	Mark Johnston, Bill Deters
United States Forest Service	Erica Taeker, TJ Broom, Mason Schuur

Stewardship Committee Roles:

- Attend sub-group meetings to lend expertise and help shape priorities
- Serve as liason to neighbors, peers, affiliations
- Stay informed and provide input through quarterly meetings
- Participate in events, workshops, outreach



Sub-Group Meetings

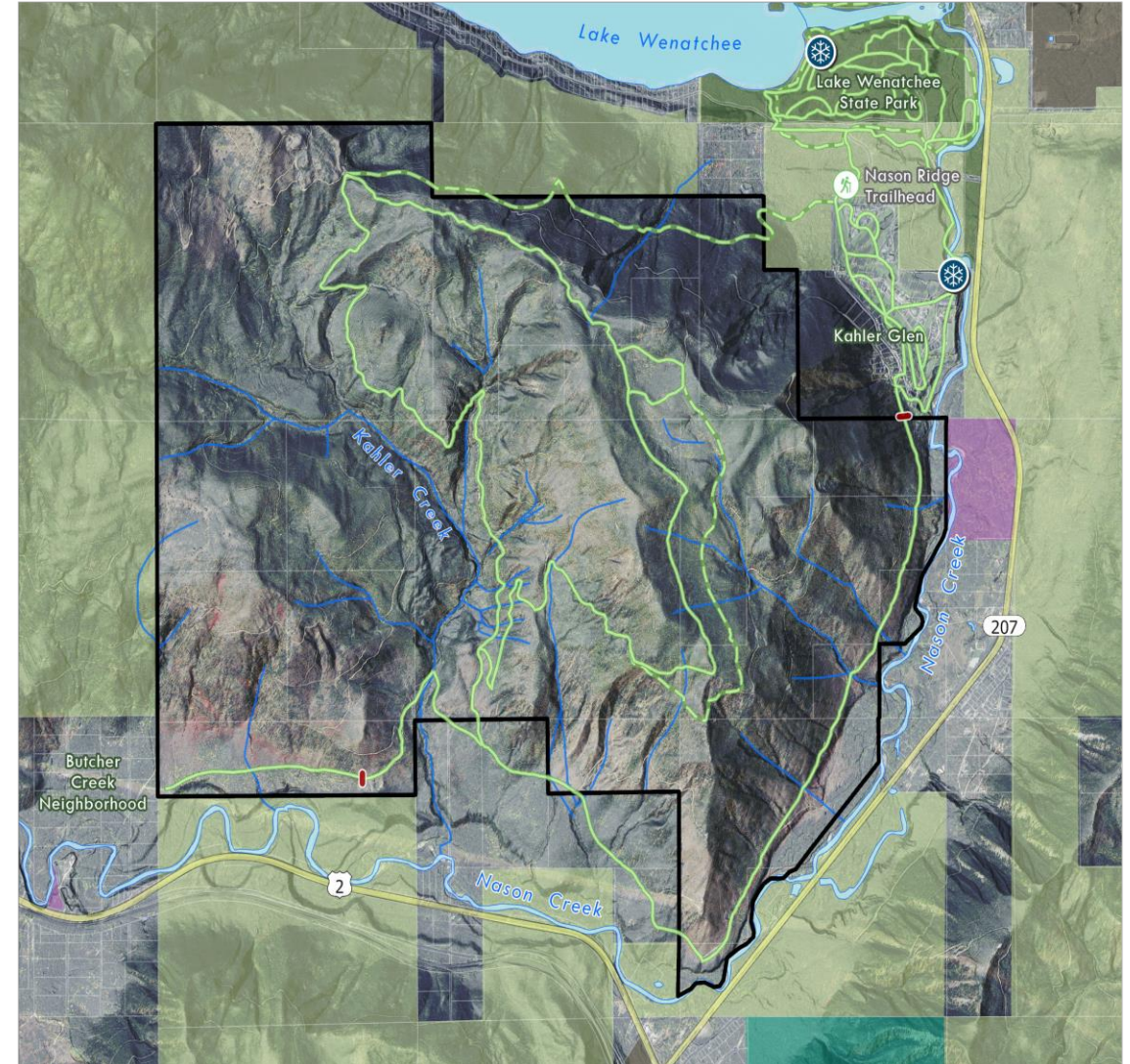
December 12th, 2022: XC Trail Grooming Priorities

- Grooming agreement between Chelan County and State Parks
- Day-use warming huts, initially placed by State Parks
- Consider adding concession for overnight winter huts
- If use increases, more funding may be available for more frequent grooming
- Feasibility for Butcher Creek sno-park
- Partner with Plain Valley Ski Team
- Assess options for added loops/connections
- Evaluate opportunities for higher elevation trail connections
- Fat-tire biking not a priority



January 11th, 2023: Access and Parking Part 1

- Review of current and potential access points including:
 - State Park
 - Nason Ridge Trail
 - Kahler Glen
 - Butcher Creek Road
 - Hwy 2 Access Points
 - Cole's Corner
- Populate Access Table with opportunities and challenges
- Short and long-term priorities
- Follow-up items for priority points



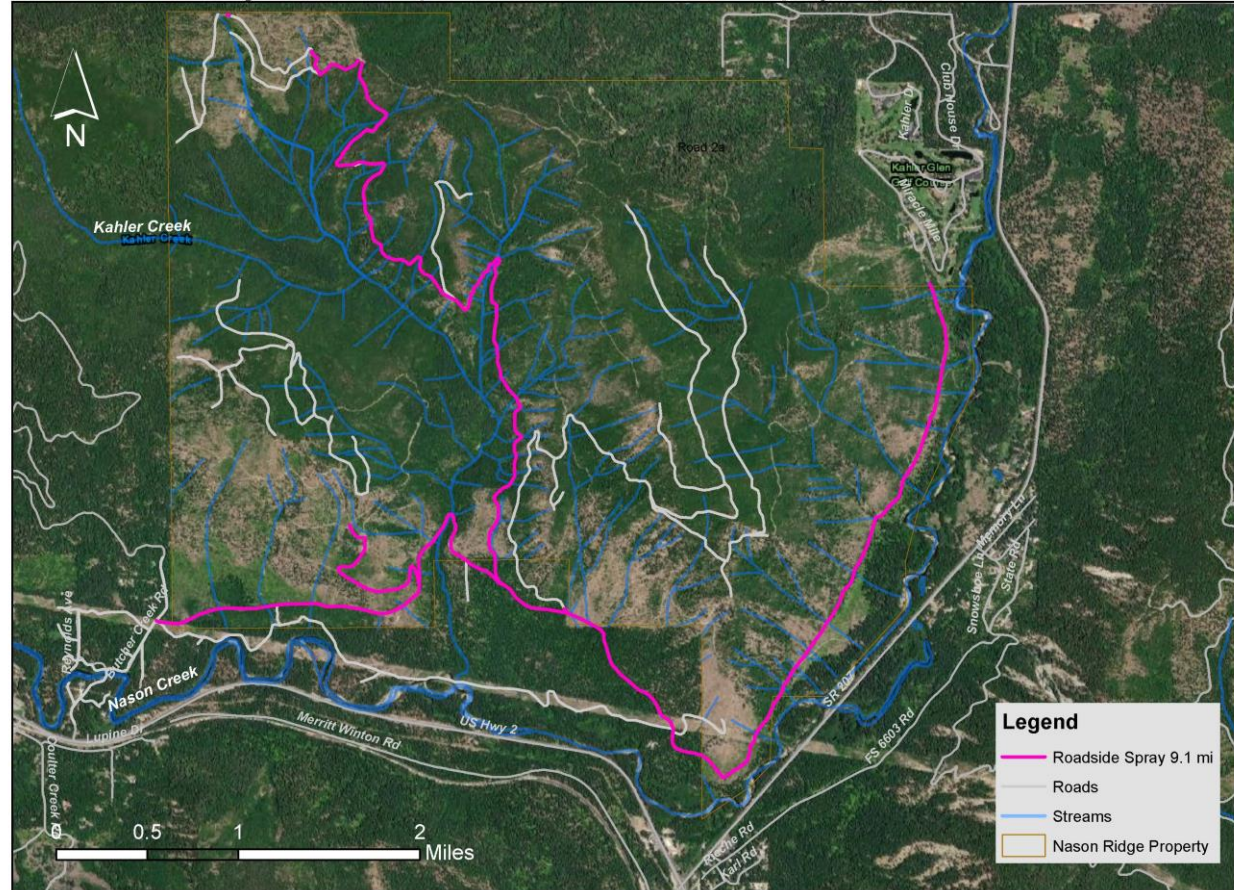
February 15th, 2023: Access and Parking Part 2

- Vision Exercise
 - *Augment existing Community Forest and cross-boundary recreation opportunities with intentional recreation improvements that showcase healthy forest ecosystems and allow for a variety of experiences. The Community Forest provides accessible nature-based enjoyment and educational opportunity aimed at benefiting local Chelan County residents.*
- Desired Conditions Exercise to help determine levels of use and development for priority access points and future planning
 - *Natural Resources, Activities, Visitor Experience, Facilities and Services*
- Priority Access Points:
 - Nason Ridge Trailhead (short-term priority): assess feasibility for expansion, monitor use, work with USFS on NEPA pathway for future expansion if needed. CF signage.
 - Butcher Creek (short-term priority): determine location for gate placement and small parking area, signage, bathroom, monitoring plan, road improvements, WSDOT
 - Cole's Corner (long-term priority): assess future possibility of bridge access to Community Forest from Hwy to, if use levels exceed capacity at Butcher Creek. Tiered/phased approach.

Upcoming Community Forest Projects

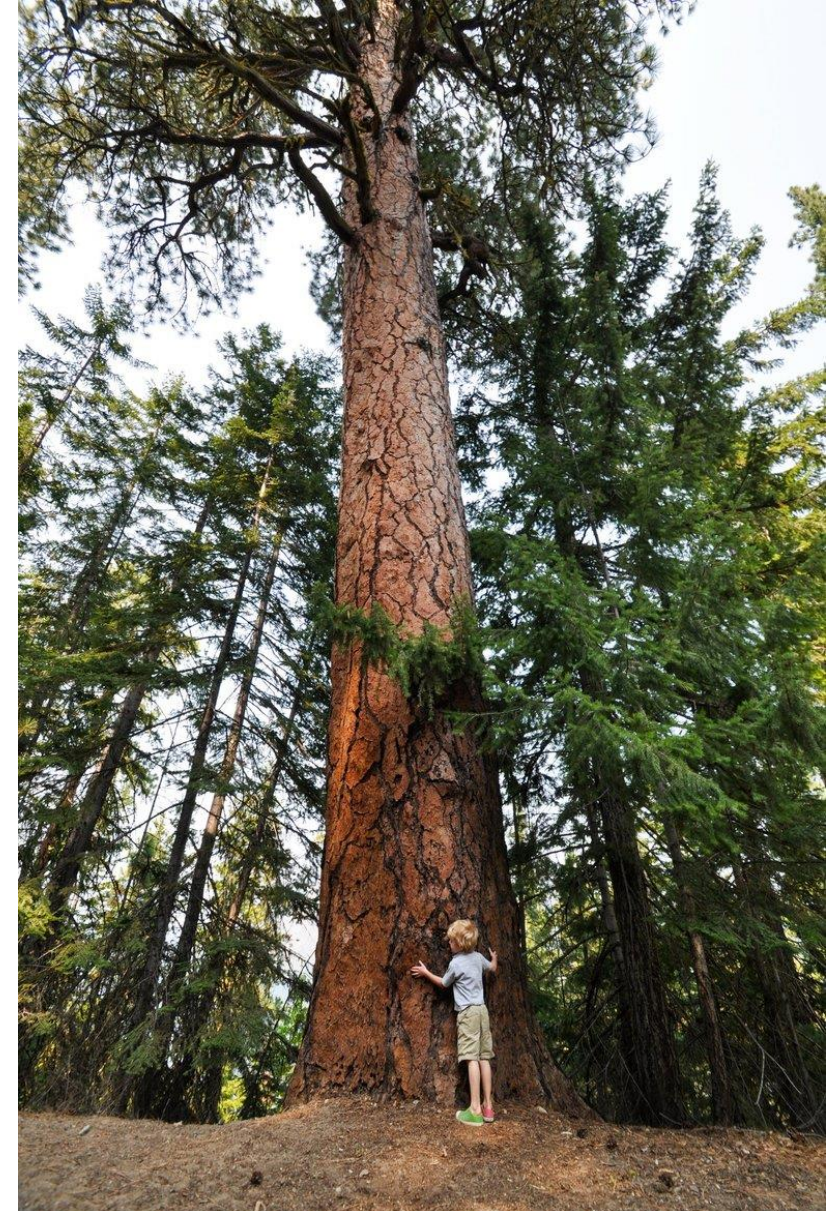
- Spring Tree Planting
- Road work at corner near Nasonview
- Invasive Species Management
- Carbon Financing/Reforestation
- May Audubon Society and BirdFest outings
- May Community Forest Coalition visit
- Biochar feasibility for Community Forest treatments
- DNR Forest Health treatment proposal
- Nason/Kahler Habitat Improvement Project Year 2
- Perimeter Road Bridge *not* happening this year

2022-23 Nason Ridge Diffuse Knapweed Treatment- Roadside Spray Map



Upcoming Meeting Topics

- April 12th sub-group meeting: Hunting
- May 16th sub-group meeting: Trails
Part 1: Management Zones, Trail
Types and Uses
- June 14th sub-group meeting: Trails
Part 2: Accessibility,
Signage/Interpretation, Loops and
Connections
- July 19th quarterly zoom meeting:
Updates and Trail Topics continued



Planning Approach

- Utilize Vision Statement, Desired Conditions, and Community Forest Management Objectives to guide planning for recreation opportunity
- Utilize Management Classification Zones based on habitat values and ecological criteria as well as visitor experience
- Washington Conservation Science Institute

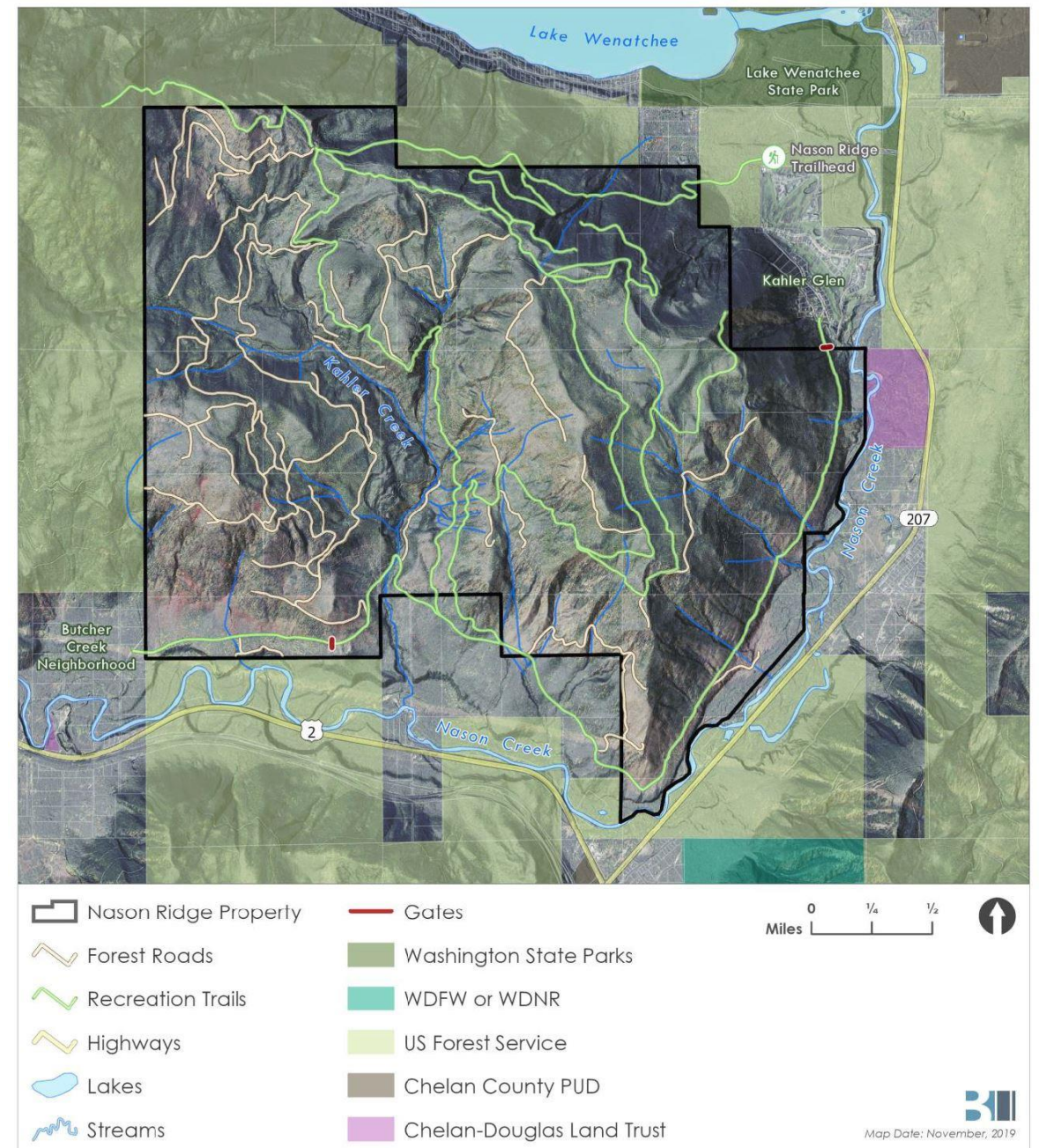


Discussion Topic: Concessions and Special Uses

- Concessions
 - Winter hut system
 - Guidance/restrictions developed by Stewardship Committee
- Special Uses
 - Provide benefits to the community
 - Support local non-profits
 - Not aimed at drawing large numbers of people from out of area
 - Guided events, races, cultural celebrations, etc.
 - Should be evaluated whether they fit with vision and goals
- Fees
 - Use fees not a priority for the County at this time, may be re-assessed in the future
 - Discover Pass, Northwest Forest Pass, SnoPark pass required at some entrances

Agenda

- Welcome and Introductions
- Community Forest Updates
 - Planning Framework Review
 - Subgroup Meeting Review
 - Community Forest Project Updates
- Upcoming Meetings and Planning Strategy
 - Introduce WCSI
- Planning Topic: Concessions, Special Uses, Fees
- Round Table Input
- Wrap Up and Next Steps



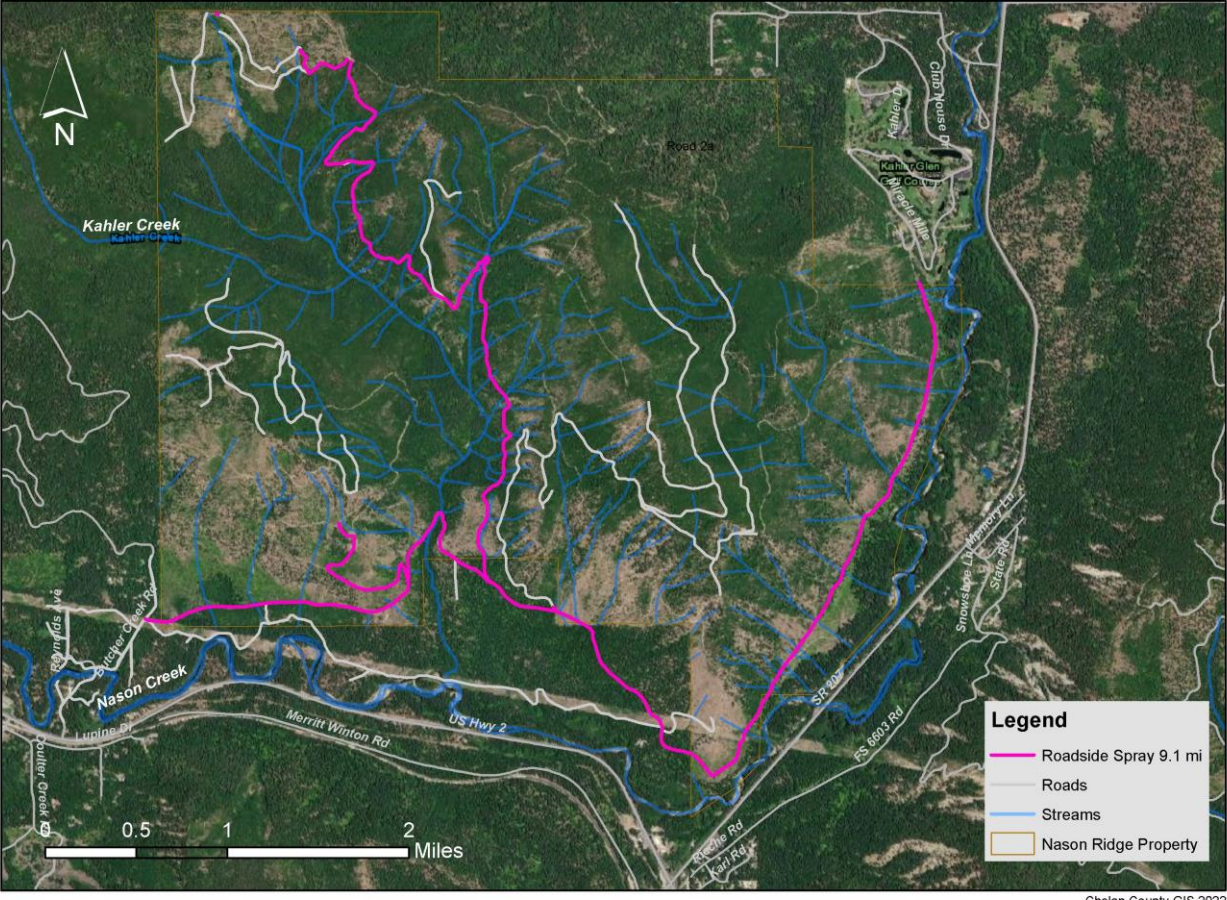
Invasive Species Management

- Diffuse knapweed spray along perimeter road, summit road, and decommissioned road segments at high risk
- Biocontrol planned for larger infestations
- 2022 and 2023 applications to treat bi-annual life cycle, funding through Department of Ecology

Nason Ridge Off-Road Knapweed Treatment Area



2022-23 Nason Ridge Diffuse Knapweed Treatment- Roadside Spray Map



Nason Kahler Habitat Project

- ESA listed spring Chinook and steelhead spawning and rearing habitat improvement project
- Installation of ELJs (engineered logjams), floodplain restoration and road decommissioning
- Construction planned Summer 2022 with RCO Salmon Recovery Funding

