

# LEAVENWORTH MILL DAM REHABILITATION AND RECREATION IMPROVEMENT PROJECT

SHARING THE STORY BEHIND THE MILL DAM RRIP PROJECT IDEA.

LAMB DAVIS CO'S DAM, LEAVENWORTH WASH.

#131

DAVIS



<b>Feasibility Study/Planning</b>						
<b>Concept</b>	<b>Criteria 1</b>	<b>Criteria 2</b>	<b>Criteria 3</b>	<b>Criteria 4</b>	<b>Criteria 5</b>	<b>Tier</b>
Whitewater Park Feasibility Study	Red	Yellow	Yellow	Yellow	Red	<b>1</b>
Dog Park Feasibility Study	Yellow	Yellow	Yellow	Yellow	Yellow	<b>2</b>
Wenatchee-Leavenworth Non-Motorized Path	Red	Yellow	Yellow	Red	Red	<b>1</b>
Regional Trails Organization	Yellow	Red	Yellow	Red	Yellow	<b>1</b>
County Parks and Rec Structure and Staffing	Yellow	Yellow	Yellow	Yellow	Yellow	<b>2</b>

*Chelan County Comprehensive Plan    Park & Recreation Element    December 2017*

*Page 39 of 45*

**2017-2037**

**CHELAN COUNTY COMPREHENSIVE PLAN**



# PROJECT BACKGROUND





Wenatchee River Whitewater Park Feasibility Study  
Chelan County, Washington

Site Prioritization Matrix

	Tumwater Dam	Historic mill dam in Leavenworth	Dryden Dam	Cashmere Riverfront Park	Wenatchee River County Park	Walla Walla Point Park
Adequate hydraulic drop	1	3	4	4	4	0
Adjacent public property	1	4	3	5	4	5
Geomorphic suitability	2	4	4	1	2	0
Constructability	1	4	4	2	3	0
Existing park infrastructure	0	3	2	5	4	5
River reach degraded	5	4	5	2	2	5
Habitat improvement potential	1	3	4	2	2	0
Safety improvement potential	3	2	5	0	0	0
<b>Total</b>	<b>14</b>	<b>27</b>	<b>31</b>	<b>21</b>	<b>21</b>	<b>15</b>

# 2021 PUBLIC COMMENT PERIOD

- LETTERS FROM YN, WDFW, AND CPUD
  - CRITICAL INFRASTRUCTURE AT DRYDEN DAM FOR BROODSTOCK COLLECTION/HABITAT PROGRAMS
  - IMPACTS TO TRIBAL FISHING ACCESS
  - CONCERNS OVER INCREASED RECREATIONAL USE AND MIGRATORY PATTERNS
  - CPUD PLANS TO ASSESS SAFETY RETROFIT OPTIONS INTERNALLY
- DRYDEN DAM PETITION
- PUBLIC INPUT
  - SAFETY CONCERNS OF DRYDEN DAM
  - ADDITIONAL SITES PROPOSED
  - CONCERNS OVER ACCESS/PARKING IN LEAVENWORTH





## **DRAFT** Conceptual Design Alternatives Analysis Leavenworth Mill Dam

**PREPARED FOR:** Chelan County Natural Resource Department  
411 Washington St. Suite 201, Wenatchee, WA 98801

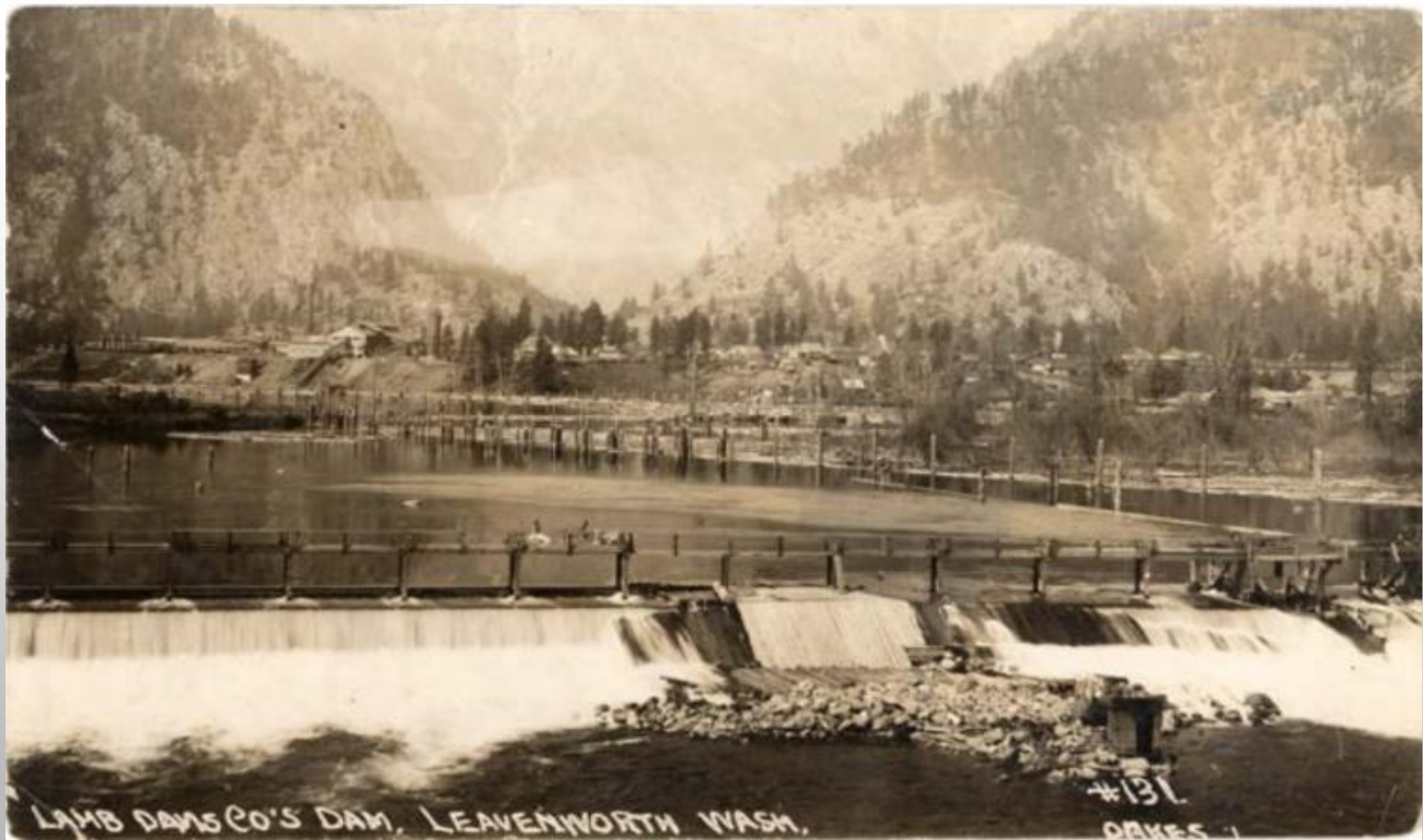
**PREPARED BY:**  
Randy Goetz  
Parr Excellence  
302 W. Steuben Street, #7, Bingen, WA 98605

**PARR**  
excellence

Mason Lacy, PE  
Recreation Engineering & Planning Inc.  
485 Arapahoe Ave, Boulder, CO 80302



**DATE:** March 28, 2022



LAMB DAVIS CO'S DAM, LEAVENWORTH WASH.

#131  
ORIGES













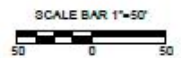








**EXISTING CONDITIONS: ALTERNATIVE 1 - NO ACTION**



- NOTES:
1. AERIAL PHOTOS FROM MAVIC AIR II FLIGHT APRIL 8, 2021 AND SATELLITE IMAGERY FROM MICROSOFT BING. AERIAL PHOTOS,
  2. PROPERTY BOUNDARY DATA FROM CHELAN COUNTY GIS.
  3. CONTOURS DEVELOPED FROM WENATCHEE REACH ASSESSMENT BLUE GREEN LIDAR DATA SET.
  4. A TOPOGRAPHICAL SURVEY HAS NOT BEEN COMPLETED.





# *WHY DO ANYTHING AT THE MILL DAM SITE?*

- REHABILITATION OF RELIC DAM STRUCTURE
  - HABITAT IMPROVEMENT POTENTIAL
  - RIVER RECREATION MANAGEMENT EFFORTS UNDERWAY
  - RIVER SAFETY
  - SHOULDER SEASON RECREATION OPPORTUNITY
  - LEARNING OPPORTUNITY FOR YOUTH/BEGINNERS
  - ENHANCE BARN BEACH POOL
- 



# REHABILITATION AND RESTORATION OPPORTUNITIES





# RIVER RECREATION SURVEY: WENATCHEE RIVER AND ICICLE CREEK NEAR LEAVENWORTH

## LEAVENWORTH RIVER RECREATION MANAGEMENT STRATEGY



**DECEMBER 30, 2020**

Prepared by: Wenatchee Valley Planning, LLC  
Prepared for: Chelan County Natural Resources Department



# RIVER SAFETY



## Woman drowns amid slew of Wenatchee River float emergencies near Leavenworth

By Jefferson Robbins Jul 13, 2022

Article: NCW Life



Photo: Wenatchee World

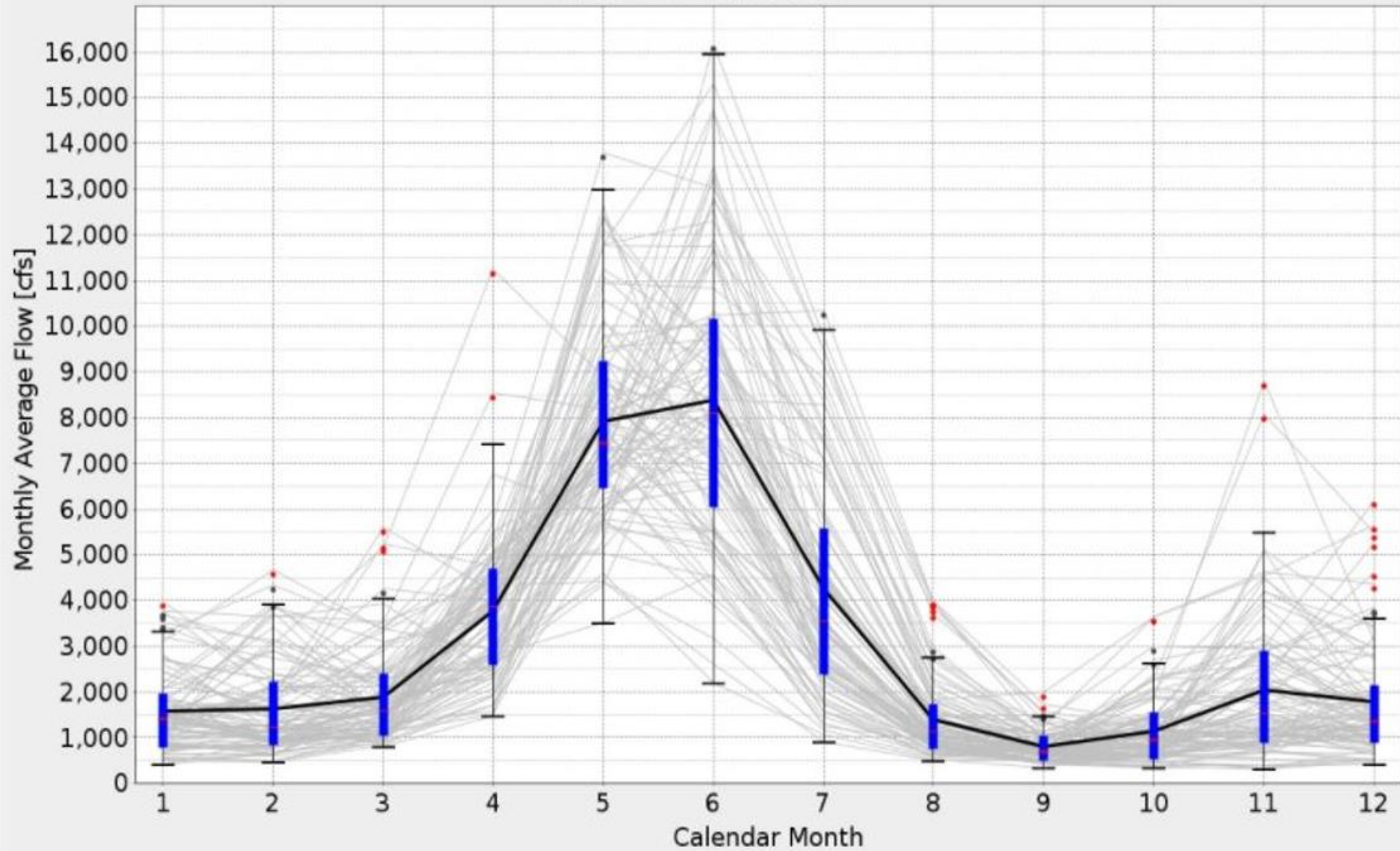


# SHOULDER SEASON RECREATION

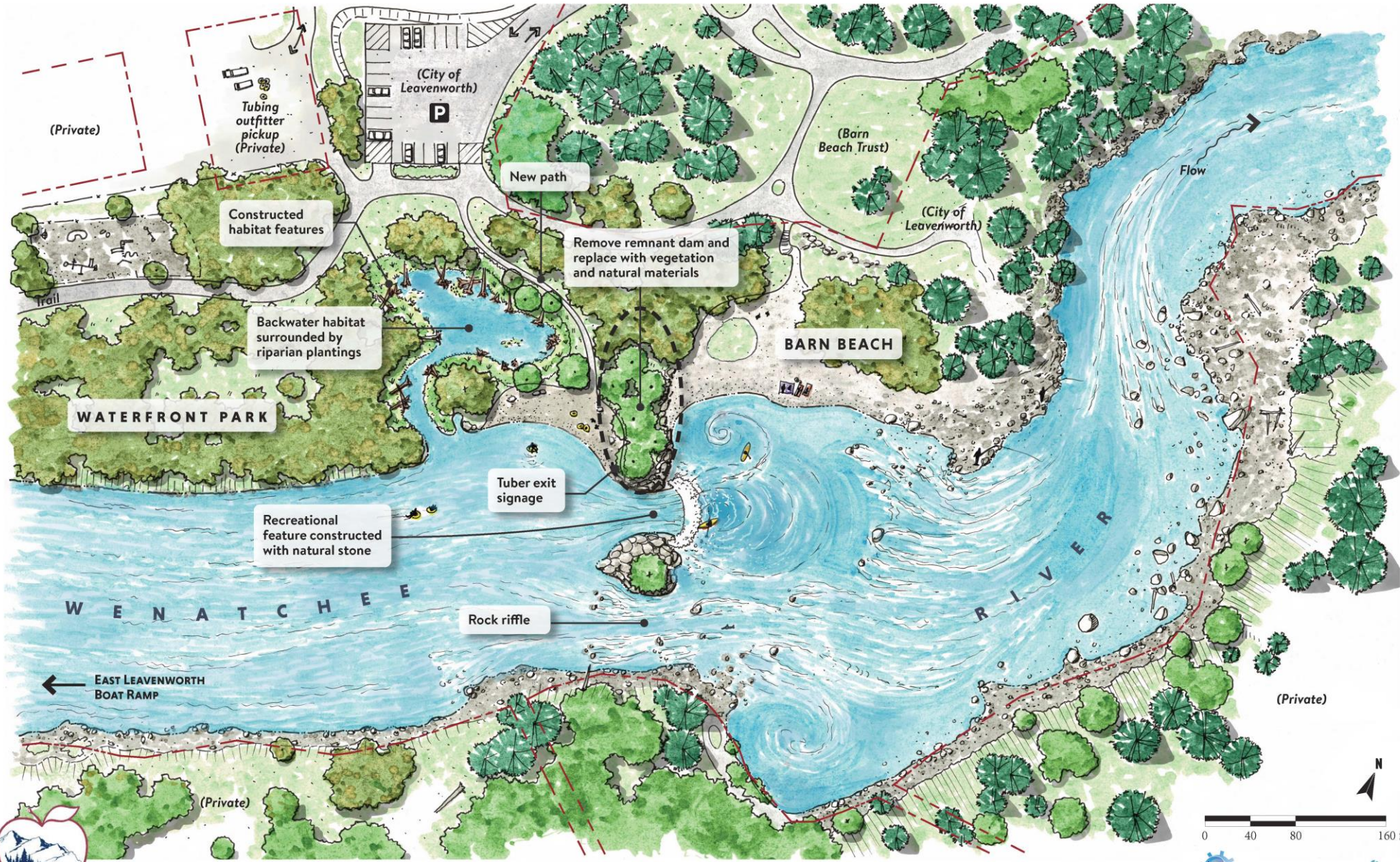




### Monthly Averages for USGS Station: 12459000; WENATCHEE RIVER AT PESHASTIN, WA







**Leavenworth Mill Dam** Rehabilitation and Recreation Improvement Project | **CONCEPTUAL PLAN** October 28, 2022





# DESIGN CONCEPT DISCUSSION (RECREATION ENGINEERING AND PLANNING)

- RANGE OF ALTERNATIVES, CURRENT CONCEPTS INCLUDES ADDING WAVE FEATURE UTILIZING EXISTING REMNANT STRUCTURE AND NATIVE MATERIALS FOR A 'RIVERINE' FEATURE.
- WHAT WOULD A WAVE FEATURE LOOK LIKE?
- HOW DO WE KNOW IT WOULD WORK AND AT WHAT FLOWS?
- WHAT KIND OF MAINTENANCE WOULD BE NEEDED?
- HOW WOULD RIVER HYDRAULICS BE AFFECTED?



# Montrose, CO





# Siloam Springs, AR





# Missoula, MT

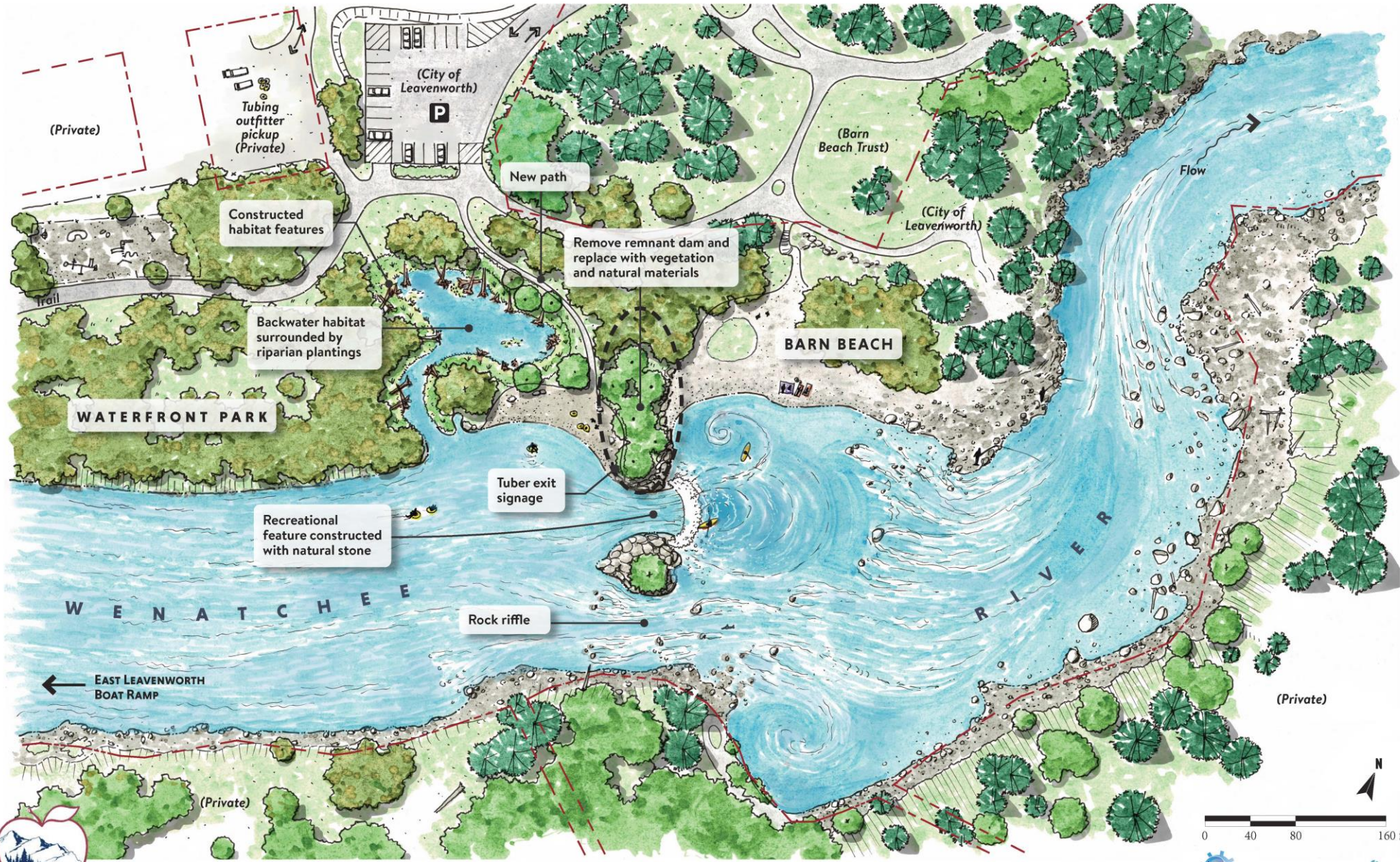




# Franklin, NH







**Leavenworth Mill Dam Rehabilitation and Recreation Improvement Project | CONCEPTUAL PLAN** October 28, 2022



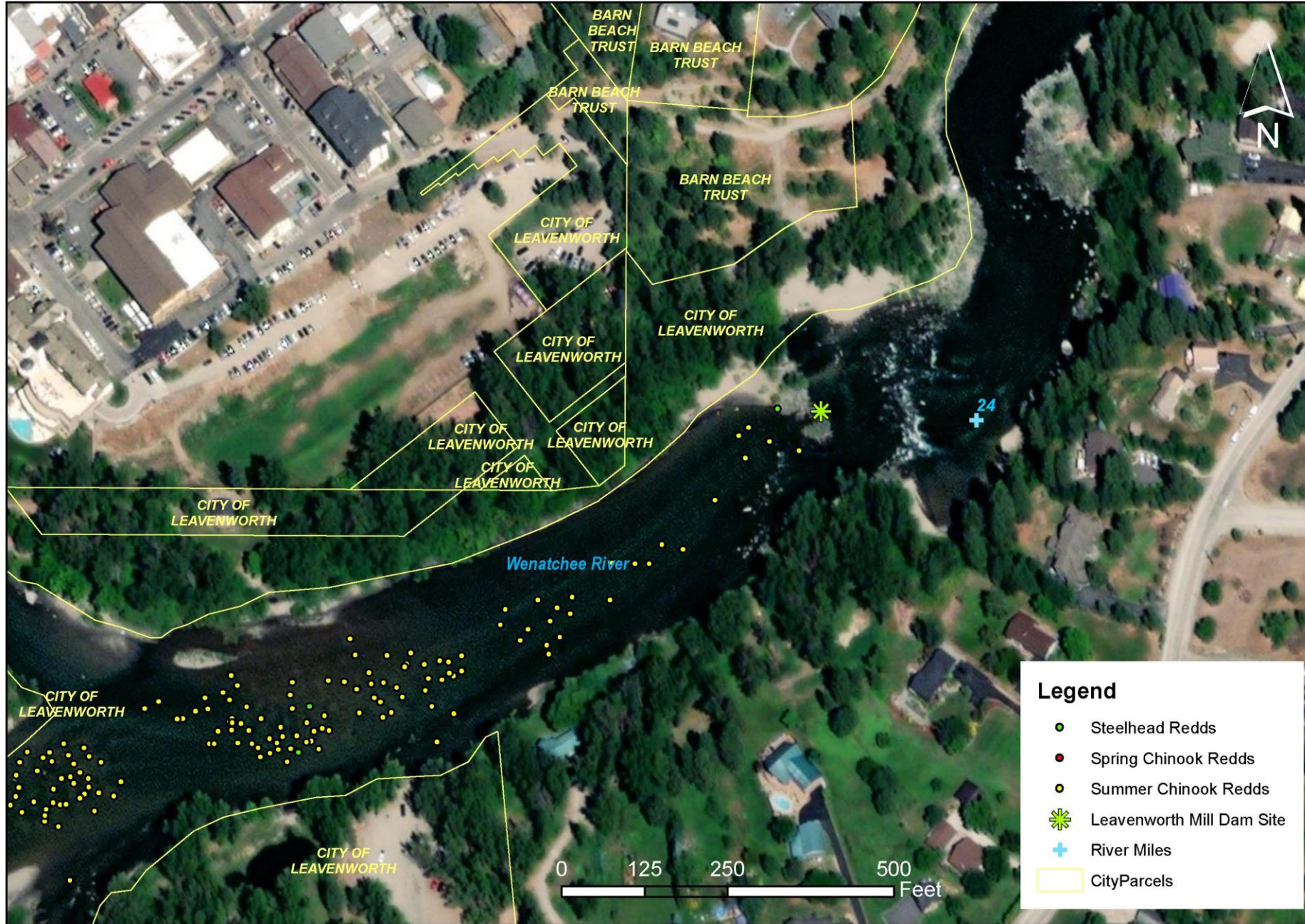


# AQUATIC ECOSYSTEM CONSIDERATIONS (PARR)

- Potential impacts to ESA listed fish and other aquatic species
  - Meeting with WDFW, USFWS, NMFS
- What would go into next design phases to ensure no negative impacts to listed species?
  - Assessing hydraulic modeling for impacts to migration
  - Assessing timing of increased use with life cycles
  - Assessing known redd locations and impacts from potential use patterns



# Leavenworth Mill Dam Vicinity Spawning Redd Locations



Data credits: Chelan County GIS, Upper Columbia Salmon Recovery Data Portal Redd Locations 2021.



# CONCLUSION

- BOTTOM LINE: A PROJECT HERE COULD BE BENEFICIAL IN MANY WAYS. BUT THE PROJECT IS SCALABLE DEPENDING ON THE DESIRES OF THE COMMUNITY.
- ADDING A WAVE FEATURE TO THE PROJECT WOULD INCREASE THE COMPLEXITY, BUT WOULD ADD TO THE RECREATIONAL APPEAL BOTH FOR WHITEWATER AND FOR THE MILL DAM POOL.
- THE R.R.I.P. CONCEPT STRIKES A BALANCE OF RESTORATION, SAFETY, AND RECREATION BENEFITS, AND SHOULD BE CONSIDERED WITH THE DEVELOPMENT OF A RIVER RECREATION MANAGEMENT STRATEGY





# THANK YOU!

ERIN MCKAY

CHELAN COUNTY NATURAL RESOURCE DEPARTMENT

[ERIN.MCKAY@CO.CHELAN.WA.US](mailto:ERIN.MCKAY@CO.CHELAN.WA.US)

[HTTPS://WWW.CO.CHELAN.WA.US/NATURAL-RESOURCES/PAGES/WENATCHEE-WHITEWATER-PARK-FEASIBILITY-STUDY](https://www.co.chelan.wa.us/natural-resources/pages/wenatchee-whitewater-park-feasibility-study)

NEXT OUTREACH EVENT: COMMUNITY ENGAGEMENT NIGHT AT FESTHALL MAY 2<sup>ND</sup> 2023

