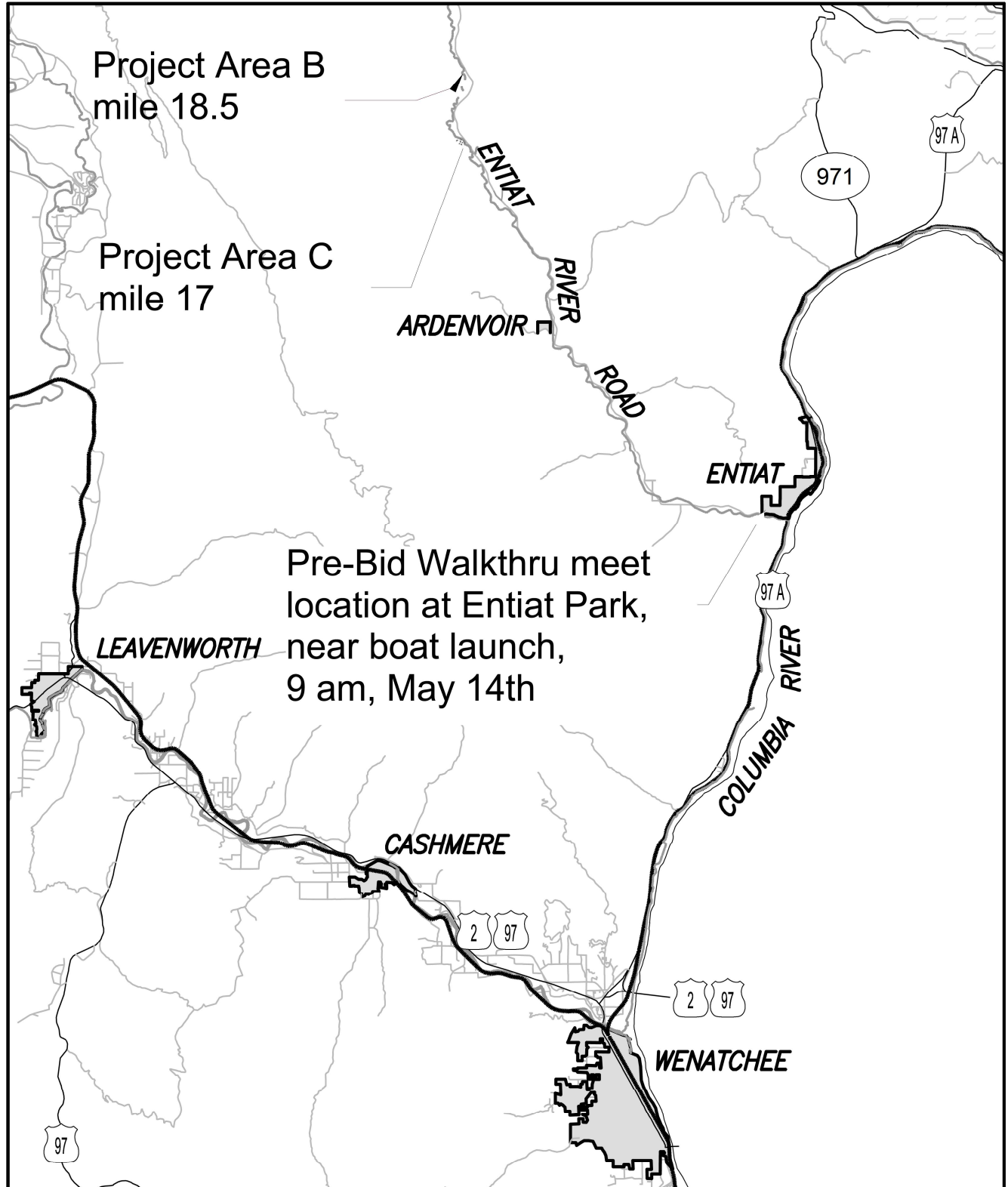


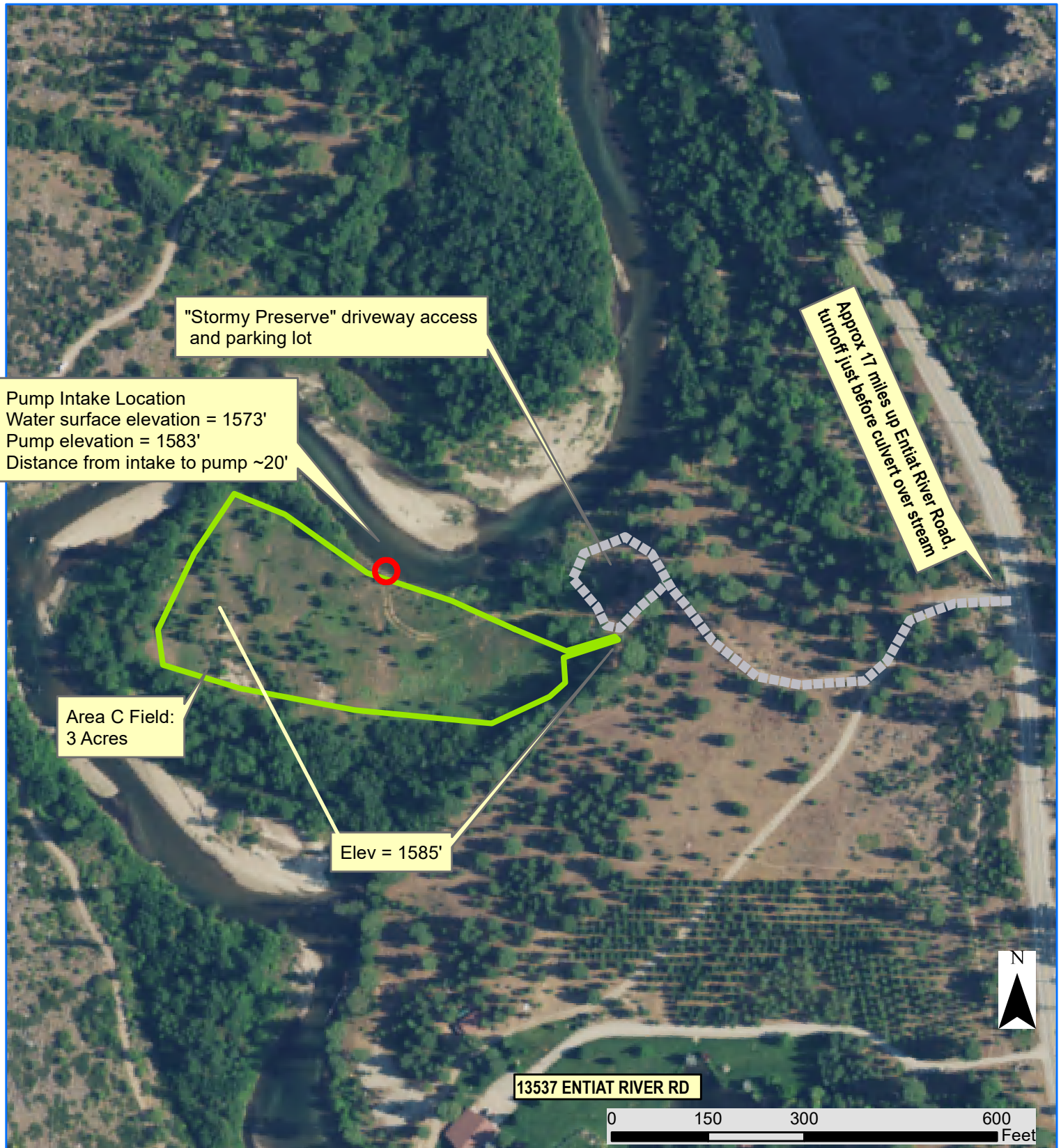
Entiat Stillwaters Irrigation Project



Project Area B is located on parcel #271914330000, approximately 18.5 up Entiat River Road from its intersection with Highway 97a. There are two driveways to access the property, both are gravel and located just past Mossback Lane.

Project Area C is located on parcel 271922554480, also known as 'Stormy Preserve' and is approximately 17 miles up Entiat River Road from its intersection with highway 97a. The gravel driveway is on the left, just past a sign for 'Storm Lodge' and before crossing a culvert over Stormy Creek.

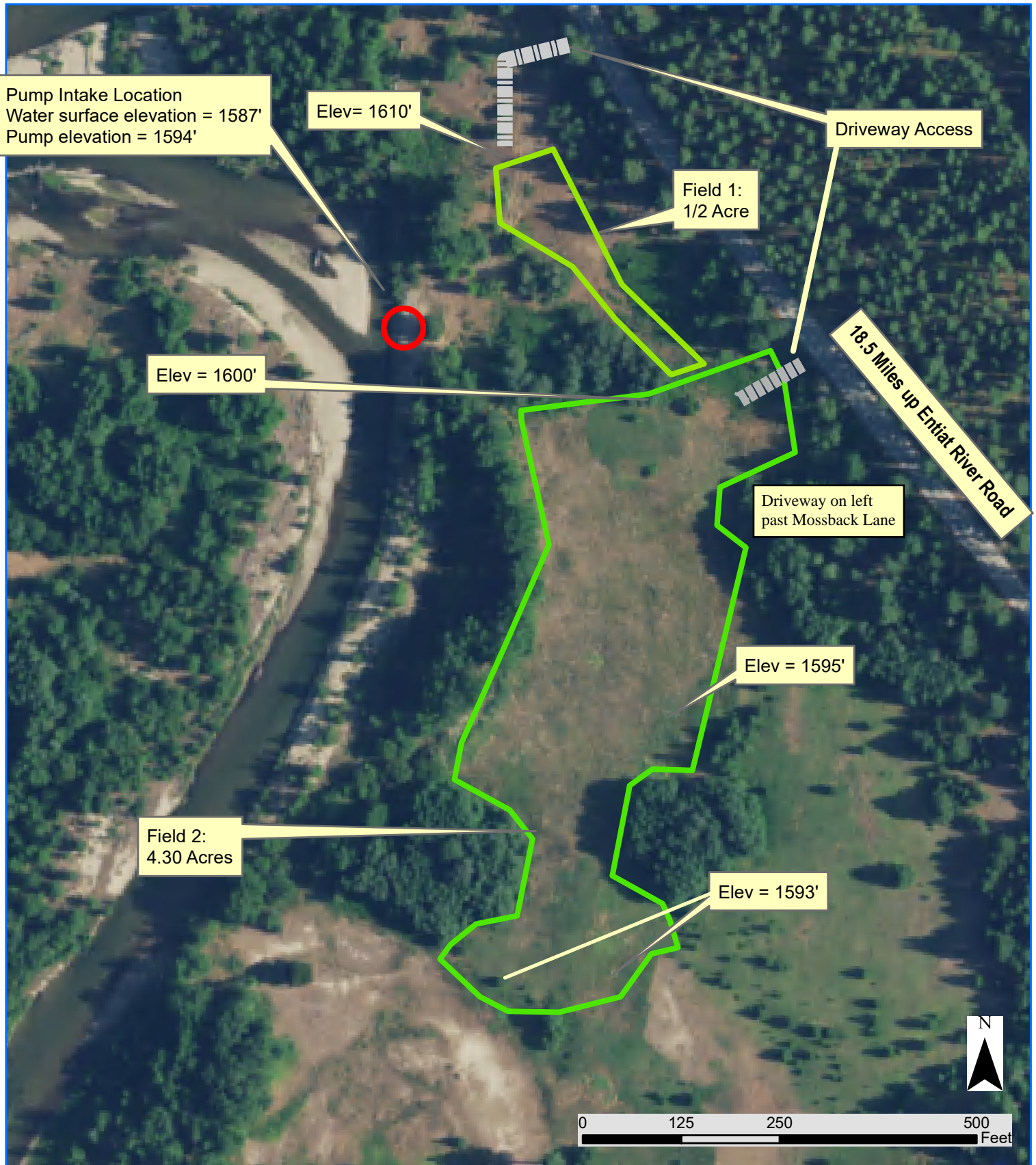
Entiat Stillwaters Irrigation Area C Site Map



General Notes Area C, Parcel #271922554480:

- Field approximately 3 acres, 700' long (E to W) x 250' wide at its widest point
- System shall be capable of spreading 22,000 gallons across site within a single watering period
- All irrigation water will be diverted from surface river and need filtration and pump able to move small solids
- Entire system to be laid above ground, no trenching or excavation required
- Wheel lines not feasible due to vegetation growth
- No electricity on site

Entiat Stillwaters Irrigation Area B Site Map



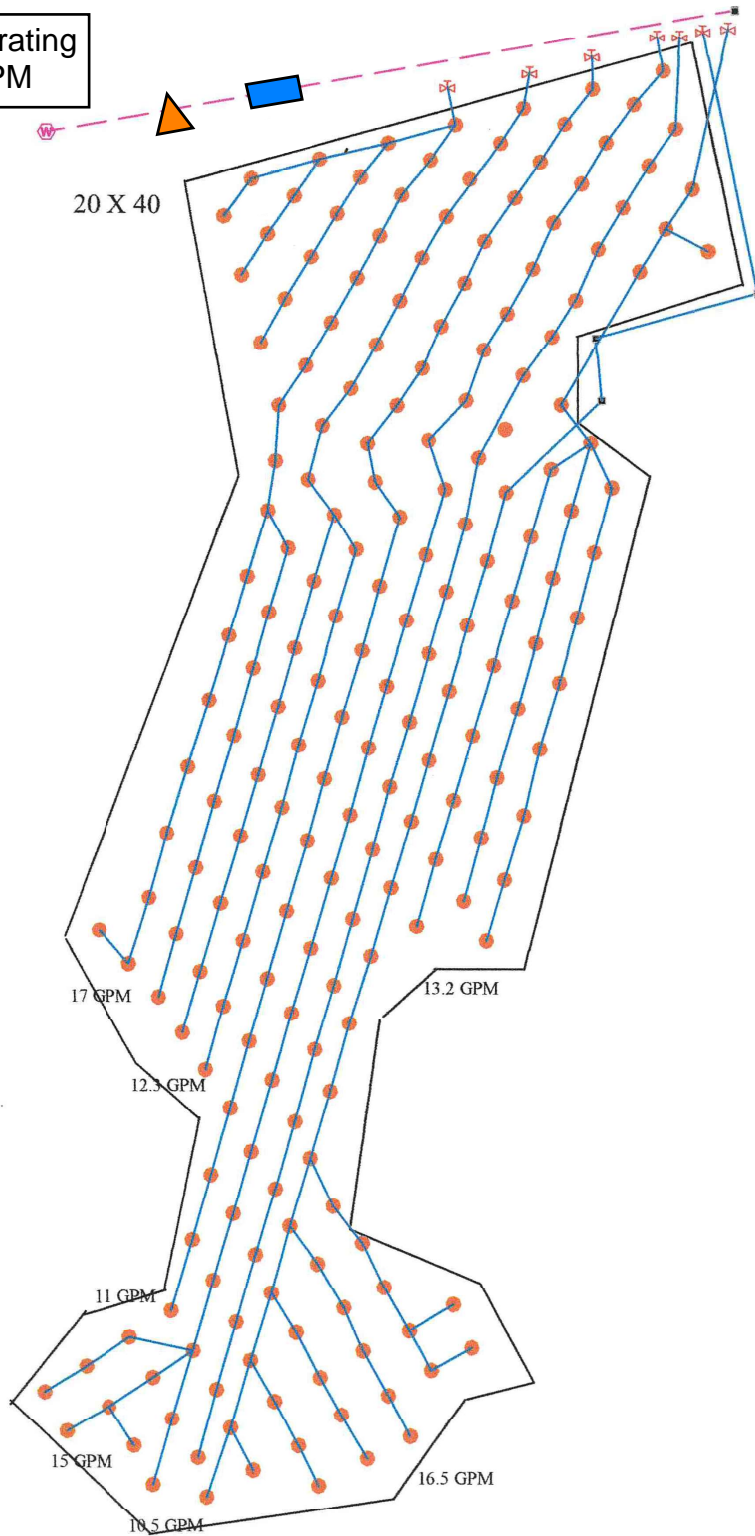
General Notes Area B Site (Parcel 271914330000):

- Field 1 is approximately 325' long (N to S) x 75' wide at its widest point
- Field 2 is 680' long (N to S) x 250' wide at its widest point
- System shall be capable of spreading 29,000 gallons across site within a single watering period
- All irrigation water will be diverted from Entiat surface river and need filtration and pump able to move small solids
- Entire system to be laid above ground, no trenching or excavation required
- Wheel lines not feasible due to vegetation growth
- No electricity on site

Entiat Stillwaters Irrigation Project

Reference Example Irrigation Plan

Pump operating at XXX GPM



- 1" (25mm) Polyethylene Pipe
- - - 4" Class 160 IPS SW PVC Pipe
- 1" Ball Valve
- R10 A #50 #50
- Water Supply
- 4" Disc Filter
- In-line water meter