

# Stemilt-Squilchuck Recreation Plan



**Chelan County Natural Resource Department  
September 2019**



## Table of Contents

Acknowledgments.....	5
Executive Summary.....	5
Chapter 1: Introduction.....	6
<i>Background</i> .....	6
<i>Previous Planning Efforts</i> .....	6
<i>Scope and Purpose</i> .....	7
<i>Vision and Goals</i> .....	9
<i>Planning process overview</i> .....	10
<i>Public Input</i> .....	12
Chapter 2: Planning Area.....	13
<i>Landowners and Jurisdiction</i> .....	13
<i>Planning Zones</i> .....	15
Chapter 3: Issues and Opportunities.....	22
Chapter 4: Desired Conditions.....	22
Chapter 5: Wildlife Considerations.....	25
<i>Modeling and Mapping</i> .....	26
Chapter 6: Discussion of Alternatives .....	30
Chapter 7: Recommendations.....	32
<i>Maps</i> .....	42
Chapter 8: Implementation.....	45
<i>Implementation Framework</i> .....	45
<i>Roles and Coordination</i> .....	52
Chapter 9: Monitoring Plan.....	54
<i>Potential Indicators Related to Key Issues and Opportunities</i> .....	54
<i>Monitoring Framework</i> .....	55

## Appendices

A: Recreation Planning Charter.....	62
B: Design Drawings.....	66
C: Public Comment Response.....	69
D: Potential Funding Sources.....	72

E: Evolution of the Winter Recreation Concept.....	72
F: Naneum Plan/Stemilt Plan Area Overlap Context Map.....	85

## List of Figures

Figure 1. Planning Area.....	9
Figure 2. Planning Process Timeline.....	11
Figure 3. Land Ownership.....	13
Figure 4. Planning Area Boundary.....	14
Figure 5. Planning Zones.....	16
Figure 6. Elk Habitat Potential.....	26
Figure 7. Stemilt Basin Bull Elk Use.....	28
Figure 8. Stemilt Basin Bull Elk Use During Rut.....	29
Figure 9. Summer Recommendations Map.....	43
Figure 10. Winter Recommendations Map.....	44
Figure 11. Clear Lake Draft Design Drawing.....	66
Figure 12. Steffen's Meadow Draft Design Drawing.....	67
Figure 13. Upper Wheeler Reservoir Access Draft Design Drawing.....	68
Figure 14. Naneum Plan Winter Concept Map.....	73
Figure 15. El Sendero Original Winter Proposal Map.....	75
Figure 16. March 2108 Open House Winter Recommendations Map.....	76
Figure 17. Motorized Group Winter Proposal Map.....	77
Figure 18. Compromise Winter Proposal Map.....	79
Figure 19. All Winter Proposals Map.....	80
Figure 20. Stemilt Elevation Map with All Winter Proposals.....	81

## **Acknowledgments**

This plan would not have been possible without contributions from the following groups and individuals. The Recreation Planning Committee spent many hours in meetings and following correspondence regarding the planning process. Many members of the planning committee volunteered time for the effort, showing a commendable commitment to the process. This effort was truly a community planning effort, and the participation of these community members was crucial to the process. Technical assistance was provided through the National Park Service Rivers, Trails, and Conservation Assistance (RTCA) program. The RTCA program brought a high level of expertise and organization that was incredibly helpful in undertaking this thorough planning process. Financial assistance was provided through grants from North Central Washington Community Foundation and Our Valley Our Future grant program, supporting staffing needs to facilitate the process. Washington Department of Fish and Wildlife (WDFW), Washington Department of Natural Resources (DNR), Washington State Parks, Mission Ridge, and El Sendero all saw the need for this plan and provided letters of support to enable the process to get underway, and participated consistently in the planning effort. Finally, the Stemilt Partnership and the community at large stayed engaged throughout, and provided input and comments to help shape the outcome of the plan.

## **Executive Summary**

The upper Stemilt and Squilchuck basins are a focal point for recreation in the Wenatchee Valley and beyond. This planning effort seeks to thoughtfully address the future of recreation in this area, while also recognizing that it is not a blank slate but an area of multiple uses already occurring on the landscape. With all respect to the local residents and families who have been using this area for generations, this is also a time of change in the Wenatchee Valley and there is a call for more recreational opportunity to enhance the quality of life for residents and visitors alike. This plan takes a comprehensive look at the existing and potential recreation opportunities in the area and seeks to balance these with wildlife habitat needs, agricultural infrastructure needs, and resource and community protection elements. The intent is not to impose wholesale change in the basin and detract from the appeal of this natural landscape, but rather to focus recreation impacts to protect the values of the Stemilt Partnership and provide a strategy for growth of recreation opportunity that continues to protect these values.

As many things are in flux in this 17,000+ acre planning area, this plan should be revisited and updated every 10 years to ensure the goals of the plan are being met. The implementation and monitoring elements of this plan should be reviewed annually to gauge progress and assess adaptive management needs. Additionally, this plan will require continued community participation to move toward implementation and to solve some remaining issues described herein.

## Chapter 1: Introduction

### *Background*

This plan was written for, and under guidance of, the Stemilt Partnership, in collaboration with Washington Department of Fish and Wildlife and Washington Department of Natural Resources. The Stemilt Partnership was formed in 2007 in response to the proposed sale and privatization of over 2,500 acres of DNR upland forest in the Stemilt Basin. The Partnership, made up of a broad coalition of agriculture, wildlife, recreation, and conservation interests, worked with Chelan County to stop the sale and create a shared vision for managing the landscape. The foundation of the Stemilt Partnership Vision is the protection of water resources, wildlife, and recreation in the Stemilt Basin. In 2012, investment in the Stemilt Vision increased when Chelan County purchased about 2,500 additional acres in the basin from Longview Timberlands Co., with the intent of preventing privatization and development in the basin. The Stemilt Partnership, facilitated by Chelan County Natural Resource Department, meets regularly to discuss management of what is now referred to as the Stemilt-Squilchuck Community Forest.

This plan directly addresses one of the three pillars of the Stemilt Vision. Along with water resources and wildlife, recreation is highly valued in the Stemilt and Basin. With pressures from increasing development on private property within the basin, increases in use as the population of the Wenatchee Valley grows and the popularity of outdoor recreation rises, and illegal and damaging activities occurring in the basin, the need for a plan to guide the future of recreation and the protection of resources affected by recreation has become apparent.

### *Previous Planning Efforts*

In 2015, the Washington Department of Natural Resources and the Washington Department of Fish and Wildlife completed the Naneum Ridge to Columbia River Recreation and Access Plan ([http://www.dnr.wa.gov/sites/default/files/publications/amp\\_rec\\_final\\_naneum\\_ridge\\_to\\_columbia\\_river\\_rec\\_plan](http://www.dnr.wa.gov/sites/default/files/publications/amp_rec_final_naneum_ridge_to_columbia_river_rec_plan)). This joint effort between the state agencies covers a large area including the Colockum and Whiskey Dick Wildlife Areas, part of the Haney Meadows/Tronsen Ridge area, and the Stemilt Basin, which comprises a small percentage of the planning area. The Naneum Plan includes recreational suitability modeling, management goals and strategies, and some recreation development concepts for the Stemilt Basin. While the concepts provide some specific direction, such as a north-south trail linking Squilchuck State Park to Naneum Ridge trails and winter non-motorized access and play areas, these concepts lack the specificity needed to be vetted by the Stemilt Partnership and the community at large. The Stemilt Basin is a unique area with a broad range of stakeholders and interests, and a robust planning effort focusing just on this area and the adjoining access points from the Squilchuck Basin would facilitate implementation of the Naneum concepts pertaining to the Stemilt area. The impetus for this undertaking

was the need for a focused planning effort that could examine the current conditions, incorporate work done through other planning efforts, take into account the changes on the horizon, and produce a set of recommendations vetted by the Stemilt Partnership, the agencies and landowners, and the community as a whole. The combination of checkerboard land ownership, importance of wildlife and water resources, and an invested local community underscores the importance of developing a recreation plan that is specific to the area and is produced through a collaborative process.

The 2008 Stemilt-Squilchuck Community Vision Document (<https://www.tpl.org/our-work/stemilt-squilchuck-community-vision>) also offers guidance for recreation planning in the basin. The Vision Document was produced through an effort between Chelan County, the Trust for Public Land, and the Stemilt Partnership in 2007 (Stemilt-Squilchuck Community Vision, 2008). The Vision Document provides good insight on recreational use and potential, and includes a set of potential recreation development concepts and considerations devised by the Stemilt Recreational Technical Subcommittee during the compilation of the Document. The document contains an overview of recreational activity in the basin, along with mapping of known recreation sites and traffic-count numbers tracking vehicle use throughout a calendar year. Wildlife habitat modeling for elk and other priority habitats and species is also included. The document expresses the desire of the Stemilt community to protect traditional recreation opportunities such as hunting, fishing, and snowmobiling, while also protecting the wildlife and water resources in the basin. The Vision Document makes broad vision statements, but lacks specificity on how to accomplish the overall recreation goals for the basin. Protection of water resources and wildlife, two of the three pillars of the Vision Document, play major roles in planning for the third pillar, recreation opportunity in the Stemilt-Squilchuck Community Forest.

### ***Scope and Purpose of Plan***

The purpose of the Stemilt-Squilchuck Recreation Plan is to provide guidance and recommendations for managing recreation in the Stemilt-Squilchuck basin in a manner that provides for the types of recreational opportunity desired by the community while also protecting the important values of wildlife, water, and natural resources. While the Plan is not a formal management plan, it does represent input from local stakeholders on how recreation should be managed in the basin. It is designed to provide a path forward for managing recreation in the area over the next decade. Recommendations in the Plan are strictly voluntary and are not legally binding in any way to the landowners and managers; rather they are meant to provide informed guidance on how lands in the Stemilt-Squilchuck basin can be managed to meet both recreation and conservation goals. The Plan will be a useful tool in articulating a shared vision and recommended actions, and will help facilitate the securing of necessary funding for implementation of the recommended actions. In addition, portions of the plan may be incorporated into other management plans.

This Plan is a collaborative effort made in good faith, and no funds are currently allocated for implementation. Stakeholders will work collaboratively to identify funding sources and implement plan elements over the next several years, as described in the Implementation section. The actions described within are recommendations vetted through a community planning effort with robust public outreach. The Plan is intended to serve as a guiding document to help landowners, land managers, and stakeholders implement concepts developed through previous planning efforts in a way that preserves the values held by the Stemilt Partnership and the community, as well as address future recreational growth and development in the basin in a thoughtful and collaborative manner. This Plan does not supercede the authority of existing land and water management authorities or plans. Recommendations may be implemented in a phased approach, or by priority of action as funding or opportunity allow. There is no expectation that all elements will be implemented immediately. Adoption of the plan required environmental review under the State Environmental Policy Act (SEPA), and individual actions moving through the implementation phase will comply with all applicable permitting needs and SEPA requirements.

The geographic scope of the Plan includes the various land ownerships in the Upper Stemilt and Squilchuck watersheds. Land ownership is primarily WDFW, DNR, and Chelan County, but also includes United States Forest Service and private lands. While recommendations on County Lands are officially adopted through this Plan, recommendations on state and federal lands are suggestions for future management, and will need to first be vetted through other environmental and legal planning processes before a formal obligation attaches to management. The Plan holds no obligation for private landowners, but collaboration with private landowners has and will likely continue to occur to address plan recommendations. The planning area falls within the scope of the 2016 Naneum Ridge to Columbia River Recreation and Access Plan, and the recommendations in the plan are designed to fit within and compliment those of the Naneum Plan (this Plan will be considered by the State Agencies as complimentary to the Naneum Plan). See Appendix F for a context map showing the spatial relationship of the Naneum Plan and the Stemilt-Squilchuck Recreation Plan.



Stemilt-Squilchuck Recreation Planning Area Location

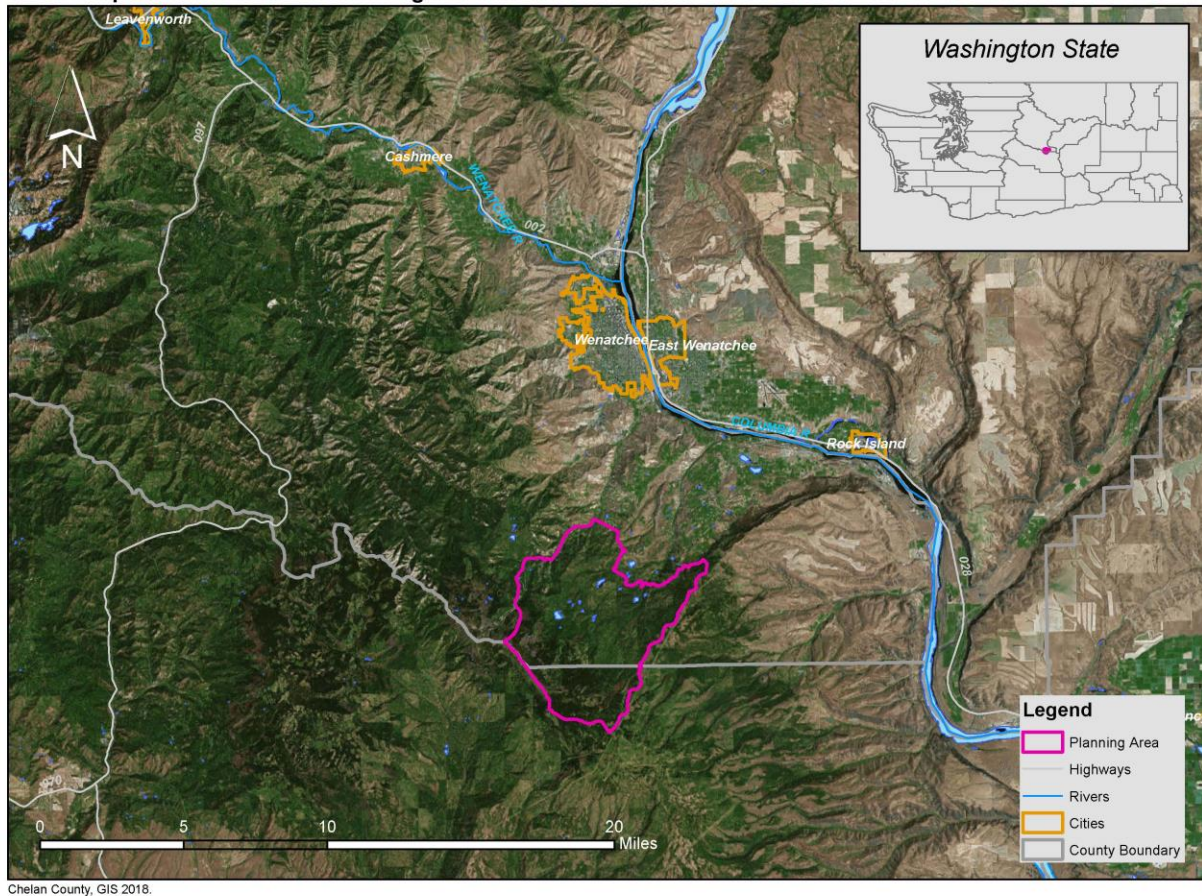


Figure 1. Planning Area

### ***Vision and Goals***

The vision statement and goals for the planning process were established in November 2016 by the recreation planning committee. The vision statement highlights the importance of including all stakeholders and community values in the process, and also incorporates the three pillars of the Stemilt Vision Document. The goals established early on proved to emerge as important themes throughout the planning process.

### **Vision Statement**

*Establish sustainable recreation opportunities in the Stemilt-Squilchuck Basin through a community based planning process that embraces community values, protection of water and wildlife resources, and collaboration with all stakeholders.*

### **Goals established by the Recreation Planning Committee**

- Provide access and infrastructure to enhance recreation opportunity

- Protect wildlife, water, and natural resources
- Work together with stakeholders, agencies, and all interests
- Build on the work done through previous planning efforts
- Improve current land management issues
- Accommodate current and future needs
- Provide all members of the community equal access to recreation
- Identify appropriate areas for activities to reduce conflict (managed recreation and seasonal considerations)
- Provide a safe and secure environment through law enforcement and fire response
- Incorporate education and outreach
- Allow for adaptive management
- Enhance quality of life in Chelan County

### ***Planning Process Overview***

Chelan County Natural Resource Department (CCNRD) began facilitation of the Stemilt-Squilchuck recreation planning process in May 2016. The planning process was initiated by convening a group of local stakeholders representing land managers and recreational interests to gauge interest in working toward a recreation plan for the Stemilt-Squilchuck basin, in response to the completion of the 2015 Naneum Plan and several land use proposals in the watershed. This original group of stakeholders would largely comprise the recreation planning committee that was crucial to the planning process. In January 2017, CCNRD was joined by the National Park Service Rivers, Trails, and Conservation Assistance program through a planning assistance grant. Shortly thereafter, a core stakeholder group including landowners/managers and the Stemilt Partnership Steering Committee convened to establish the Charter and the decision-making process (see Appendix A). Beginning in March 2017, bi-monthly meetings were held with the established recreation planning committee to work on various elements of the Plan.

The recreation planning committee had representation from land and resource management agencies, local recreationists (both motorized and non-motorized), private landowner representatives, wildlife specialists, local irrigation districts, Wenatchee Chamber of Commerce, Chelan County government, Wenatchee Valley College, and non-profit organizations (see Appendix A for complete list of participants). The group met 10 times between May 2016 and July 2018, totaling about 30 hours of planning sessions. New members were added in April 2018 in response to interest and concerns brought forward by community members at the March 2018 Open House. Meetings were open to public and all meeting materials were made available on the Chelan County Natural Resource Department website (<https://www.co.chelan.wa.us/natural-resources/pages/stemilt-squilchuck-recreation-planning-meetings>). Planning group members also spent time outside of planning sessions reviewing documents, providing input, and attending Stemilt Partnership and Open House meetings. The following timeline provides an outline of the activities that were carried out by the planning group over the 2+ year process.

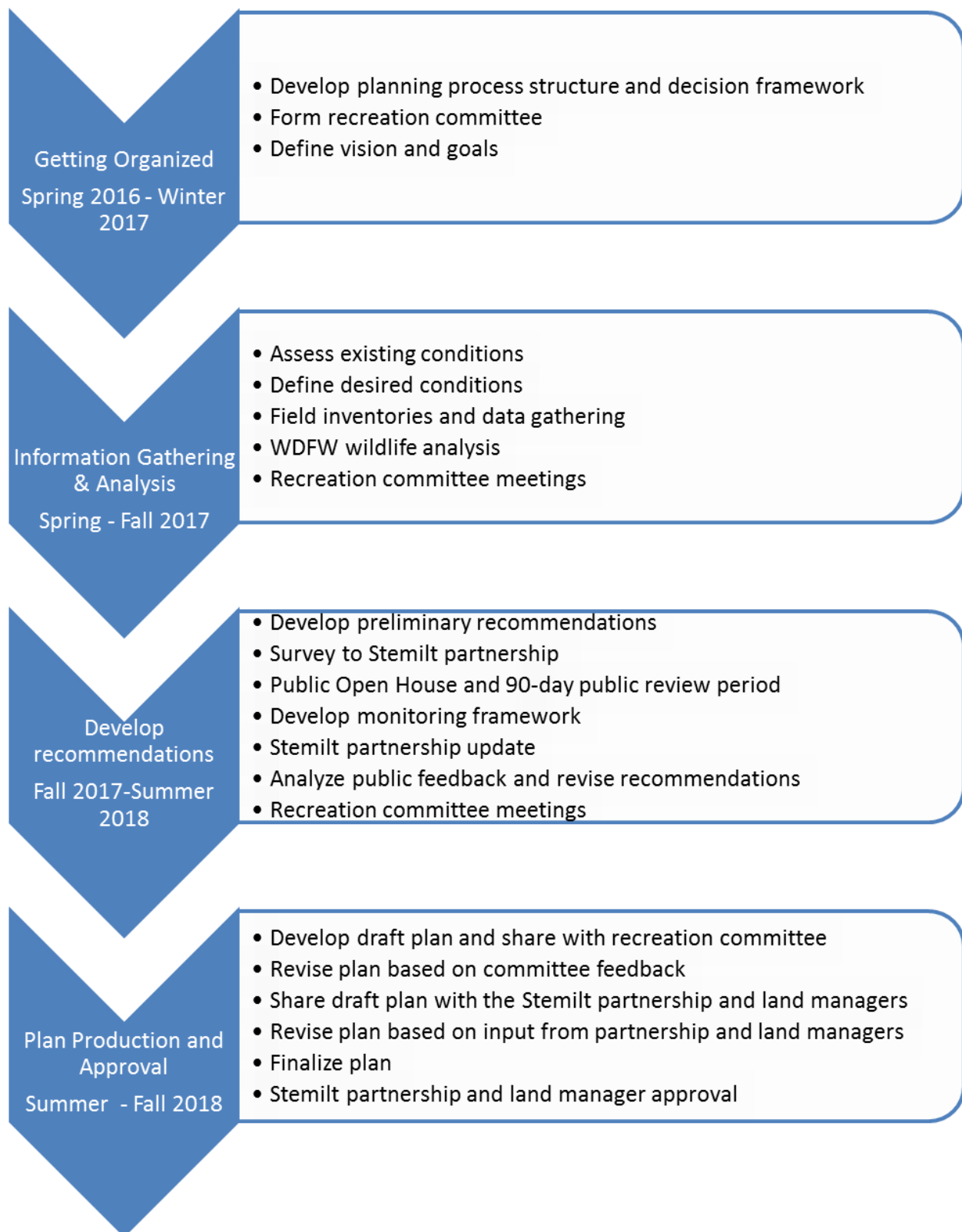


Figure 2. Planning Process Timeline

### ***Research and Inventory***

Inventory and analysis of existing and potential development sites was an important component of the planning process. Existing sites were visited during the first year of the planning process to determine recreation opportunities and impacts currently present on the landscape. A survey was sent out to the Stemilt Partnership to gather observation-based information from frequent users on types and levels of use of popular recreation areas in the planning area. This survey returned 42 responses and provided a basis for development of site-improvement concept designs for several high-use recreation sites (see Concept Designs, Appendix B).

CCNRD and NPS staff also met independently with stakeholders, including public land managers, irrigation districts, and private landowners. These meetings helped shape the recommendations by identifying the concerns and opportunities posed by the draft recommendations.

### ***Public Input***

Public input was a critical component of the planning process. Feedback gathered from the Stemilt Partnership and local residents mid-way through the planning process shed light on concerns surrounding public access and land use, and helped to guide development of recommendations that could meet the needs of the greater community.

A survey containing the draft recommendations and maps was distributed by email to the Stemilt Partnership and local residents in November 2017, prior to finalization of the draft recommendations. The survey received 47 responses, many of which provided specific feedback. The recreation planning group reviewed and incorporated this feedback into the draft recommendations in January 2018. During this time, Washington Department of Fish and Wildlife also completed their review of the draft recommendations, and provided written comment. These comments were also incorporated into the draft recommendations in January 2018.

After review of revisions to the draft recommendations by the planning group, a public Open House was held at the Malaga Fire Hall in March 2018 to share the draft recommendations and gather public comment. A 90-day comment period was open following the Open House, during which over 200 public comments were received, primarily through email and letters sent to the Chelan County Natural Resources office. Verbal comments from the March 2018 Open House were also captured and included in the comment compilation. The planning committee reviewed all public comments and worked in subgroups to address major concerns. Public input was incorporated into the plan through revisions to some recommendations and responses to the range of comments. See Appendix C for response to public comment. A comprehensive document of all public comments received can be viewed on the Chelan County Natural Resource Department's Stemilt Partnership page (<http://www.co.chelan.wa.us/natural-resources/pages/recreation-planning-documents-and-maps>).

The draft Stemilt-Squilchuck Recreation Plan was completed and reviewed by the planning group in September 2018. In November 2018, in keeping with the process laid out in the Recreation Planning Charter (see Appendix A), the Stemilt Partnership was asked to provide a vote of overall approval/disapproval of the draft plan. Only official members of the Stemilt Partnership, as identified in the 2015 Stemilt Partnership Operating Procedures, were asked to vote. Of the 26 respondents, 25 voted in support of the plan, with a response of either “I support the plan as is”, or “I can live with the decision and accept the plan, even though it may not be exactly what I want”. This voting process was intended to ensure that the Draft Plan is in line with Stemilt Partnership values, and to help land managers in decisions moving forward.

A Non-Project Action SEPA process was initiated in April 2019, with a SEPA comment period extending from April 19-May 3, 2019. A Determination of NonSignificance was made following the comment period. 10 public comments were received during this period, along with letters of support from WDFW and DNR. All SEPA documents are available for public review at the website above. Following the SEPA comment period, three public hearings were held by the Chelan County Board of County Commissioners on May 28<sup>th</sup>, June 4<sup>th</sup>, and September 16<sup>th</sup> 2019. The public hearings were well attended, and public testimony is available upon request through the Chelan County Commissioner’s Office. Multiple written comments were also received during the hearing period, and are documented along with all other written comments received during the planning process.

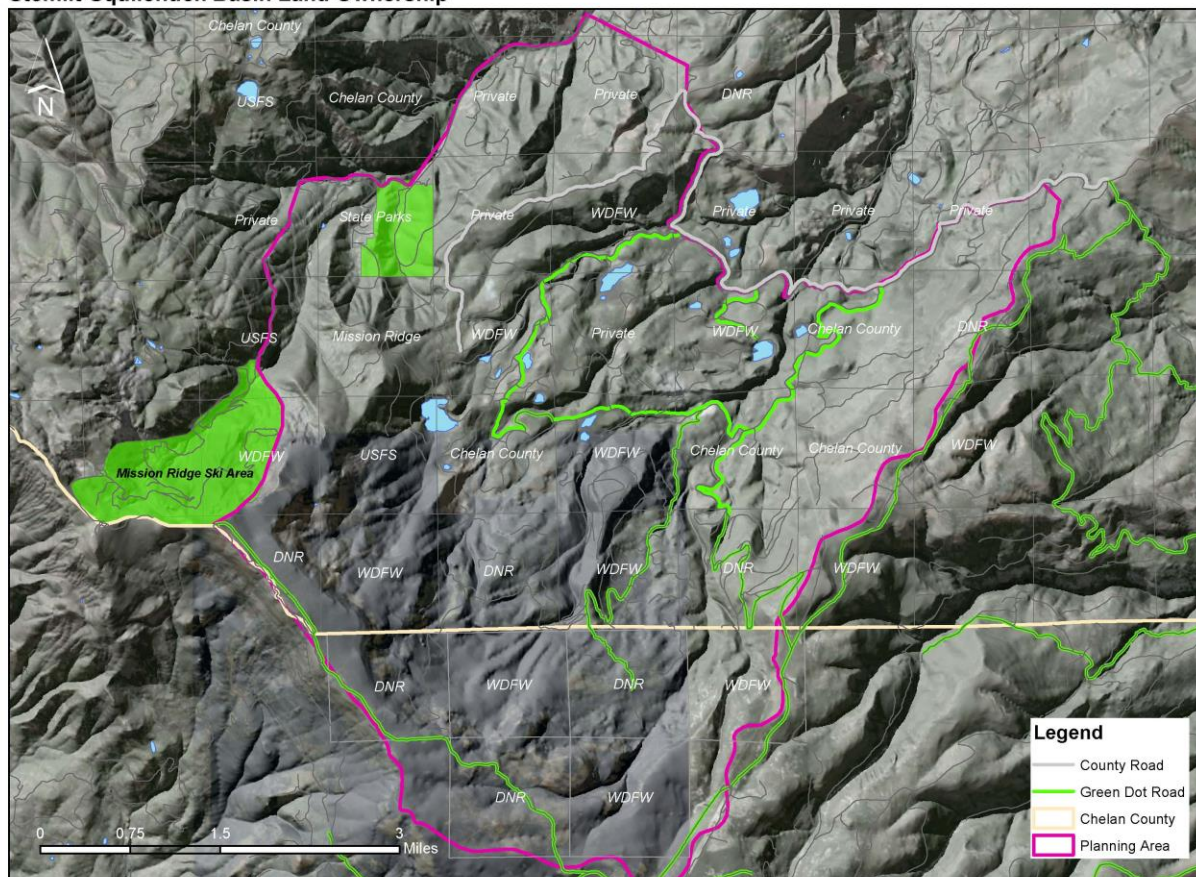
## **Chapter 2: Planning Area**

### ***Landowners/Jurisdiction***

Land ownership in the planning area is split between Washington Department of Fish and Wildlife, Washington Department of Natural Resources, Chelan County, private ownership, United States Forest Service, and Washington State Parks. With a patchwork ownership pattern across the basin, collaboration across agencies and landowners is necessary to meet the shared goals of the Partnership and landowners.



Stemilt-Squilchuck Basin Land Ownership

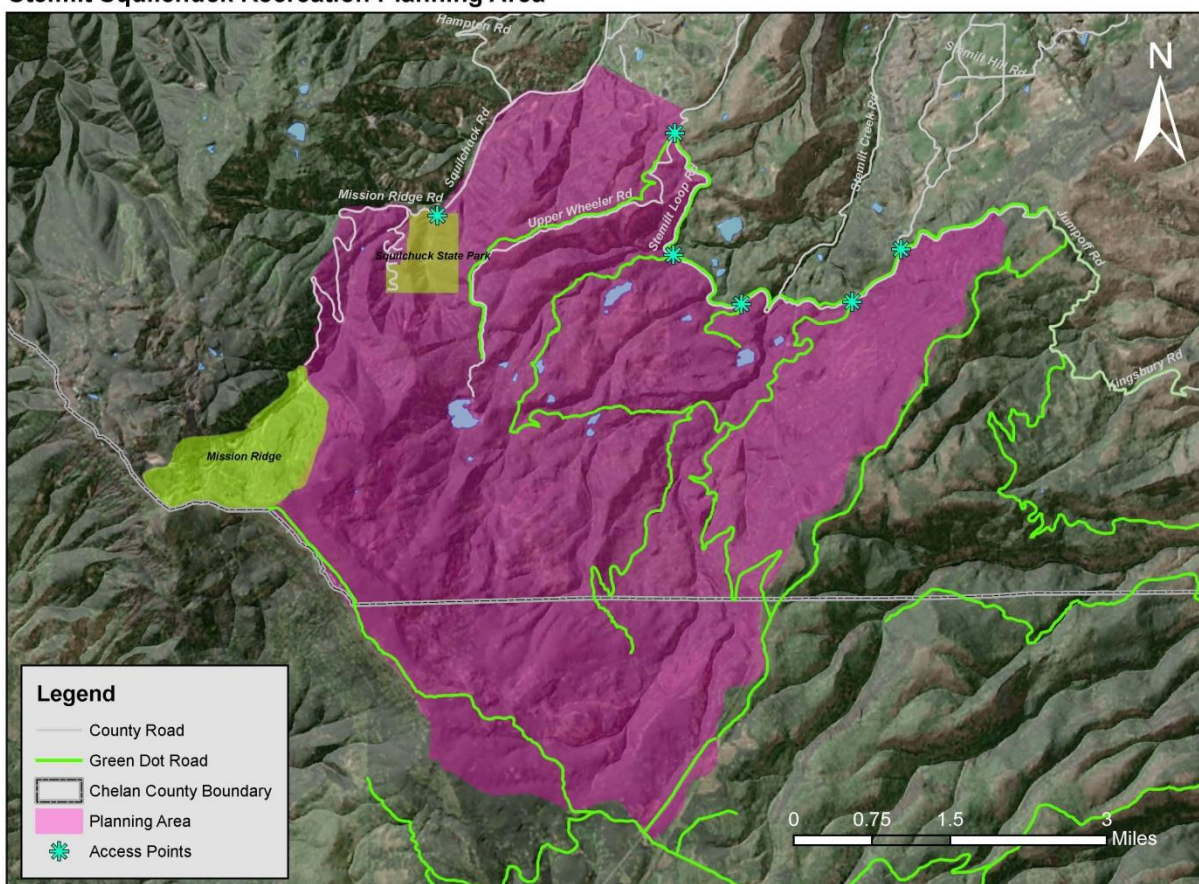


Note: Property ownership is shown at the section level rather than parcel level. Some sections contain smaller parcels of private ownership not shown on this map. Chelan County, GIS 2018.

Figure 3. Land Ownership

The Stemilt-Squilchuck watershed is situated to the south of Wenatchee and to the north of Ellensburg in Central Washington, and drains north into the Columbia River. The upper watershed is primarily publicly owned and undeveloped, and through conservation efforts by Chelan County, Trust for Public Land, and the Stemilt Partnership, has gained recognition as the Stemilt Community Forest. The majority of the public lands comprising the area of the proposed recreation plan range from 3,000-6,000 feet above sea level and experience four distinct seasons. The lower reaches of the watershed are primarily privately owned and a mixture of dispersed residential and orchard land, and are not included in the recreation planning area. The planning area is bordered by the Stemilt watershed boundary to the south and east (Naneum Ridge separates the basin from the Colockum basin to the east and the Swift Creek basin to the south), by Mission Ridge Ski Area and Squilchuck Road to the west, and by Stemilt Loop Road to the north. Land ownership is a checkerboard of Washington Department of Fish and Wildlife (WDFW), Washington Department of Natural Resources (DNR), Chelan County, Washington State Parks, and private lands.

## Stemilt Squilchuck Recreation Planning Area



The planning area is defined by the Stemilt Watershed to the south and east, the Mission Ridge Ski Area boundary and Squilchuck Road to the west, and Stemilt Loop Road to the north. Data sources: Stemilt Vision Document 2008, Chelan County GIS. Erin McKay 2016.

Figure 4. Planning Area Boundary

The forested landscape of the upper Stemilt-Squilchuck basin lends itself to a variety of activities including hiking, mountain biking, horseback riding, fishing, hunting and wildlife viewing, skiing and snowshoeing, snowmobiling, and ATV use. Use patterns vary spatially and seasonally in the basin, ranging from summer high use in the lower reaches, to winter motorized recreation in some of the upper reaches, and to relatively little use overall in other areas. Access points and dispersed camping areas in the basin are generally not developed, and in some cases are heavily impacted by illegal off-road driving, litter, and erosion to roads and parking areas. While the local community has expressed interest in developing non-motorized summer and winter recreation opportunities, including hiking, mountain biking, horseback riding, and backcountry skiing and snowshoeing, very few non-motorized trails currently exist in the basin. The goal of the recreation planning project is an integrated recreation plan that accomplishes the twin goals of conservation and enhanced recreation opportunity, while also protecting the values of the local community through outreach and a collaborative planning process.



## Planning Zones

For the purposes of describing the area and initiating a planning strategy, the planning area was divided into zones that exhibit certain characteristics of recreational use and opportunity. These characteristics include use patterns, access, terrain, presence of critical wildlife habitat, and community values. The divisions are based on field observations, WDFW wildlife data, Stemilt Vision Document maps and data, and anecdotal information from local user groups. This map represents a draft of the zone delineation concept, and can be revised as needed. Zone descriptions are accompanied by photos taken in the field by County staff during the 2016 summer/fall season.

**Stemilt Squilchuck Recreation Planning Area**

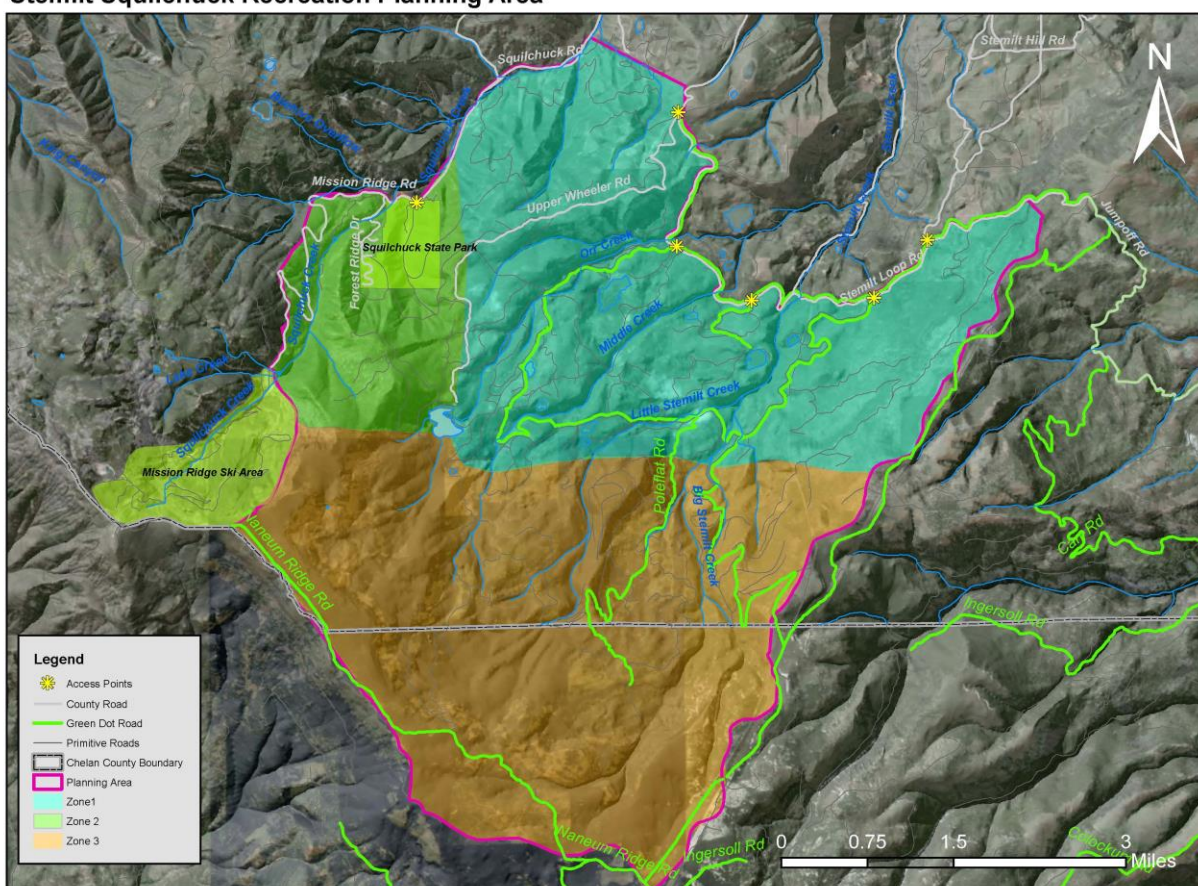


Figure 5. Planning Zones



***Descriptions of Area by Zone Delineation, as of February 2017***

**Zone 1**

- Accessed primarily from Stemilt Loop Road.
- Encompasses Upper Basin Loop Road and associated spur roads, which are part of the Green Dot Road system. These roads provide the main vehicle access into the upper Stemilt basin, and are connected to many other non-Green Dot roads that are technically closed to motorized traffic, but are still used illegally by motorized vehicles. Some of these non-Green Dot roads do have easements for irrigation facility maintenance requiring access, but others could be closed and/or decommissioned. A roads analysis will be an important component to future management of these roads for resource protection and recreation enhancement.
- Gets heavy vehicle use in spring, summer, and fall, and snowmobile use (including an extensive groomed snowmobile trail system) in the winter, with fishing, camping, hunting, wildlife viewing, hiking, horseback riding, recreational driving, and snowmobiling being the main recreational activities taking place.
- Traffic counters installed in 2007 at Green Dot road entrance points into the upper basin show vehicle use increases in the late spring and fall, May being the peak month with 3,073 counts on the Upper Basin Loop Road in May 2007 (Stemilt Vision Document, 2008).
- Contains the majority of the dispersed campsites in the basin, many of which are heavily used in the fall for hunting camps. Many of the impacted campsites occur near water bodies, and are likely used by anglers as well.
- Is visibly affected on some areas by illegal off-roading, trash dumping, large bonfires/impacted campsites.
- Little enforcement of Green Dot Road regulations occurs, although WDFW does occasional patrols in this area. Interest is expressed by WDFW and DNR to improve the Green Dot Road system and find ways to increase compliance.
- Local residents (and Stemilt Partnership) have expressed interest in more enforcement, barriers on non-Green Dot Roads, and restoration projects.
- Local residents are also protective of traditional recreational activities in this area.
- Contains private property, WDFW lands, and County lands. Two sections (16 and 22) transitioned from DNR to WDFW ownership in June 2018.
- This zone contains the highest concentration of critical elk habitat as shown on

WDFW data-derived summer elk habitat map.

- Recreation planning focus would likely be on enforcing existing road closures with gates or barriers, converting non-green dot roads to non-motorized trails, delineating campsites to reduce dispersed camping impacts, improving access points, and identifying areas for restoration.
- Public input received regarding recreation in this zone includes better equestrian parking and designated equestrian trails, a winter non-motorized trail system, improvements to fishing regulation, designated campsites, designated motorized and non-motorized trails, and better enforcement of Green Dot Road System.
- The County is undertaking a meadow restoration project in an area heavily impacted by vehicle use in a wetland/meadow on the Section 29/28 border, which involves rerouting a portion of the current Green Dot road out of the meadow area. The County is also working toward a Forest Management Plan for County lands in the upper basin, which will tie in closely with road and recreation management.

*Photos of Zone 1 (all photos by Chelan County staff unless otherwise stated):*



Fishing register at Upper Wheeler Reservoir



Meadow damage from vehicles in Steffens Meadow





Campsite impacts, Steffens Meadow



View of a hidden meadow

Dispersed campsite at Lily Lake



Clear Lake, Chelan County Section 23



Green Dot road signage at Orr Creek Road



Lily Lake access point in spring

## Zone 2

- Main access points are from Squilchuck State Park, Mission Ridge Ski Area, Upper Wheeler Road (in very rough condition) and Forest Ridge community off of Squilchuck Road.
- Squilchuck State Park has a newly developed mountain bike trail system that does not currently extend into the Stemilt Basin.
- Mission Ridge Ski Area has purchased Section 19 and the northeast corner of Section 30, and is planning an expansion of ski area operations.
- It is possible to access the Stemilt basin via non-motorized travel on road systems or

cross-country from Squilchuck and Mission Ridge, but routes are not well established or signed.

- Local outdoor enthusiasts have expressed interest in access to non-motorized recreation opportunities in this area. The Nanuem Plan and the Stemilt Vision Document also have recreation concepts around non-motorized trail development in this area. The Nanuem Plan specifies development of a non-motorized trail from Squilchuck State Park linking to a non-motorized trailhead in the Naneum State Forest. The Vision Document shows an area marked out as 'Potential Recreation Expansion Area' in this zone, with a potential new bicycle route marked out near Upper Wheeler Reservoir.
- Most of this area does not fall within the WDFW mapped critical elk habitat, but consultation with wildlife biologists is a high priority for development discussions.
- Public input received for this area includes non-motorized trail expansion from Squilchuck State Park into Stemilt basin, possibly linking into Mission Ridge property, nordic skiing trail system, snowmobile access from Forest Ridge into Stemilt basin, better access to back-country skiing in Stemilt basin, fat-tire biking trails in Squilchuck State Park.

#### Photos of Zone 2:



Upper Wheeler Reservoir, wooded ridge in Sec. 30



Slopes above Squilchuck State Park

### Zone 3

- Characterized by rough roads, difficult access, and little in the way of developed recreation resources, this area is primarily used for hunting, snowmobiling, and OHV use. The Schaller Road connects into the Colockum Wildlife Area and Naneum Ridge State Forest, and can be accessed from Ellensburg to the south.



- Public input on recreation development in this area includes a warming hut on the groomed snowmobile trail and a Green Dot road connector that would make Pole Flat road a loop instead of a dead-end.
- The 2007 traffic counter found the highest use of Schaller Road was in October (892 counts), likely due to hunting traffic.
- Land ownership in this area is composed primarily of WDFW and DNR, and lies within the Colockum Wildlife Area.
- This area primarily sees 'traditional' types of recreation (meaning that the types of use have not significantly changed over time, and are recreational activities that local families are protective of). This may be a good area to consider avoiding further recreational development to avoid user conflicts and protect wildlife and community values.



Nanuem Ridge from Schaller Road



Upper reaches of Stemilt basin, from Section 29



Nanuam Ridge, photo: applecountrysnowmobileclub



Skier in Upper basin, photo: WenatcheeOutdoors.com

## **Chapter 3: Issues and Opportunities**

The following issues and opportunities were identified by an initial steering committee in January 2017. The initial steering committee was composed of members of the Stemilt Partnership, landowners, and key recreation stakeholders. This list identifies both things that are occurring in the area with undesired impacts as a result, and things that could occur and produce desired results.

- Intentional and unintentional motorized use of the non-green dot road system due to lack of information and management.
- Intentional and unintentional recreation use of private lands.
- Impacts of current and future recreation use on wildlife, water, and natural resources.
- Perceived changes in types and amounts of recreational use.
- Potential conflicts between recreation users.
- Lack of agency personnel resources to conduct adequate backcountry enforcement of illegal recreation uses.
- Continue to provide opportunities for traditional uses such as hunting, fishing, and snowmobiling.
- Create desired new types of non-motorized recreation opportunities.
- Build on partnerships for implementation and management of recreation use.

## **Chapter 4: Desired Conditions**

Desired conditions are defined as statements of aspiration that describe resource conditions, visitor experiences and opportunities, and facilities that agencies and stakeholders want to achieve and maintain in a particular area. Desired conditions describe what conditions, outcomes, and opportunities are to be achieved and maintained in the future, not necessarily what exists today. Desired conditions paint a picture of what the particular area should look like, feel like, sound like, and function like in the future.

The Desired Conditions document for this planning process was developed by the planning committee as an umbrella statement under which all recommendations for each zone should fall. This document served as a checkpoint to ensure that the recommendations developed by the group were in-line with the overall expectations of user experience, appropriate activities and facilities, and natural resource and wildlife considerations described by zone. The Desired Conditions Document developed by the committee and shared with the Stemilt Partnership is as follows.

### Desired Conditions for Zone 1:

**Natural Resources:** Natural and ecological processes may be controlled to protect human life and infrastructure. Forests away from roadways provide sufficient diversity of age and understory for wildlife health. Agricultural water supply is protected and the basin's stream and wetland system is largely intact just off roadways. Impacts and modifications of the landscape are found at irrigation/reclamation district sites, designated recreations sites and along designated roads.

**Visitor Experience:** Visitors have better access to short trips and close to home opportunities via limited networks of green dot roads that are clearly marked. Regulations are clearly articulated along roadways and at designated sites for various activities so visitors know how to help care for shared resources and what to expect from other visitors. The presence of other visitors and law enforcement is expected near main roadways during peak season. Opportunities for resource education are available at strategic areas throughout this zone and by working with partner organizations.

**Activities:** This zone includes day and overnight use, with camping in small rustic campgrounds and dispersed primitive camping spots. Appropriate visitor activities include hiking, mountain biking, horseback riding, wildlife viewing, hunting, fishing, snowmobiling, backcountry skiing, cross country skiing, snowshoeing. Appropriate motorized activities on green dot roads and other seasonally designated routes subject to seasonal wildlife closures include vehicle driving (on green dot roads only), motorcycles and ATVs (on designated routes), and snowmobiles outside of winter non-motorized area. Target shooting may occur in Zone 1, but is not appropriate in high-use areas (Clear Lake, Lily Lake, Steffen's Meadow).

**Facilities:** Facilities appropriate in this zone are limited to rustic well-maintained trails, directional and interpretive signs, sanitation facilities, small trailhead parking lots, graded gravel roads and established campsites in high use areas. Facilities primarily center along the Upper Stemilt Loop Road. Established campsites are basic and do not have running water or showers. Some facilities are accessible for visitors with disabilities and these areas are clearly marked. One parking lot and trail can accommodate a small number of horse trailers. Sections 16 and 22 (WDFW) have restrictions on recreational development to prioritize for conservation of critical wildlife habitat under Cooperative Endangered Species Conservation Fund requirements.

### Desired Conditions for Zone 2:

**Natural Resources:** Natural and ecological processes may be controlled to protect human life and infrastructure. Sensitive hydrological areas, wildlife, and forest health are protected and largely undisturbed just off roadways. Impacts and modifications of the

landscape are found at designated recreations sites, irrigation and reclamation district infrastructure, communities, and along designated roads.

**Visitor Experiences:** Visitors have better access to more recreational opportunities through creation of designated trail linkages to adjacent partner trails and areas; designated trail linkages are compatible with seasonal wildlife usage. Use is concentrated near communities and developments. Recreation expansion on private lands in Zone 2 leads to higher concentrations of use in these areas and on adjacent public lands. Opportunities for resource education are available at strategic areas throughout this zone and by working with partner organizations. Efforts to strategically combine recreation resources with wildfire protection actions will be incorporated in planning.

**Activities:** This zone includes day use, with group camping available at Squilchuck State Park. Appropriate visitor activities include hiking, mountain biking, horseback riding, wildlife viewing, hunting, fishing, cross country skiing, backcountry skiing, snowshoeing. ATV and snowmobile use are appropriate in this zone only on a designated and agreed-upon route for Forest Ridge residents, subject to seasonal wildlife closures, in order to access the Green Dot road system in the summer or groomed snowmobile trails in the winter.

**Facilities:** Facilities in this zone are limited to rustic day use parking areas to accommodate high use trailheads and strategically placed sanitation facilities for trailheads and popular reservoirs. Other appropriate facilities in this zone include primitive trails and signs to clarify routes and uses allowed in higher use areas.

### Desired Conditions for Zone 3:

**Natural Resources:** Natural and ecological processes predominate. Water resources and wildlife are protected and largely undisturbed. The landscape is generally undeveloped, with the exception of green dot roads. Areas of Zone 3 have been previously logged. There is potential for growth in recreational use from Department of Natural Resource lands to the south and east.

**Visitor Experiences:** Visitors have opportunities to be immersed in a primitive and undeveloped setting, for solitude, self-reliance and self-discovery, connection with nature and low encounters with others year round, away from the green dot road system. Highest use occurs on green dot road system and groomed snowmobile trail system, while opportunities for primitive non-motorized recreation exist year round in other areas of zone 3. Slightly higher encounters with other visitors may occur in a natural setting along Upper Wheeler reservoir. Some roads/trails may be seasonally closed to protect wildlife habitat. Opportunities for resource education are available at strategic areas throughout this zone and by working with partner organizations.



**Activities:** This zone includes day and overnight use, with dispersed primitive camping.

Appropriate visitor activities include hiking, mountain biking, horseback riding, wildlife viewing, hunting, fishing, snowmobiling, cross country skiing, backcountry skiing, snowshoeing, and ATV/motorcycle/vehicle use on green dot roads.

**Facilities:** Facilities in this zone are minimal overall. Appropriate facilities are limited to sustainably built green dot roads, minimal signage, a winter warming hut along the groomed snowmobile trail system with a permanent sanitation facility, and a backcountry ski hut on Naneum Ridge.

## Chapter 5: Wildlife Considerations

Wildlife is one of the three pillars of the Stemilt-Squilchuck Community Vision, and holds enormous importance in the forested landscape of the upper Stemilt and Squilchuck watersheds. Diverse habitat supports many priority species such as spotted owl, white headed woodpecker, elk, mule deer, western toad, west-slope cutthroat, rainbow trout, eastern brook trout, black bear, bobcat, and mountain lion. Habitat connectivity in the contiguous forestland provides migration corridors for elk and mule deer from high elevation summer range to winter range lower in the watershed.

Washington Department of Fish and Wildlife provided technical assistance and critical evaluation of impacts of recreation proposals on this landscape throughout the planning process. Providing this critical component of the planning process, WDFW formed a Stemilt planning group composed of land managers, district biologists, habitat biologists and enforcement staff that reviewed the Preferred Recreation Concept Alternatives and made recommendations to Chelan County and the planning group.

Wenatchee Sportsmen's Association also provided a wealth of feedback on wildlife use in the basin and made insightful suggestions for planning for low-impact recreation. Input from these groups on wildlife use of the basin and from the public comment period resulted in the following general considerations reflected in the recommendations:

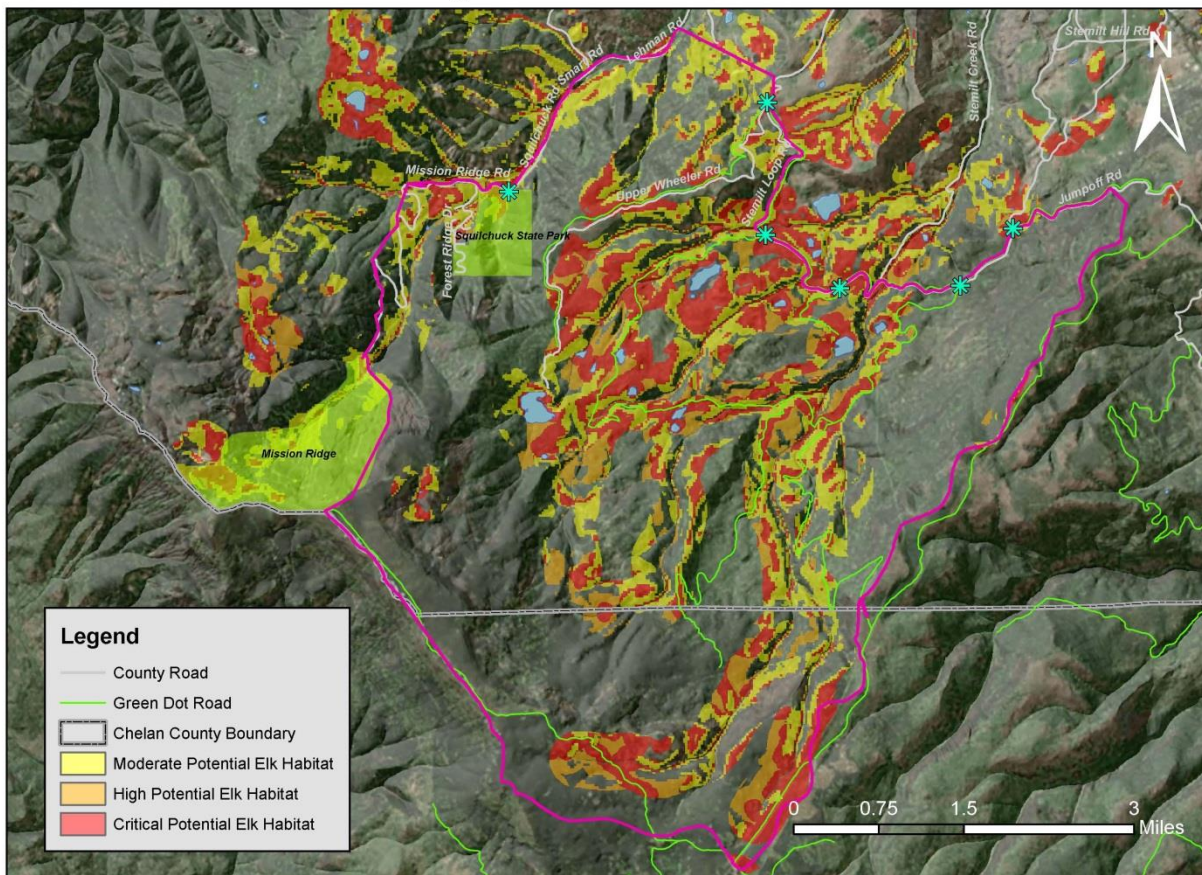
- Limit recreational trail development in Zone 3, to avoid drawing more human presence and wildlife disruption to the area with the highest concentration of elk use in the basin.
- Limit new motorized route development to areas where re-routes or alternative routes are needed to reduce impacts associated with existing routes or uses.
- Prioritize enforcement of existing non-green dot road closures with gates or barriers to manage for large areas of contiguous high-quality wildlife habitat.

- Consider seasonal closures of new trails and routes to protect elk during calving season, as per WDFW recommendations (likely May-June).
- Consider locating new non-motorized trails within the 'impact buffer' of an existing motorized route. Non-motorized recreation creates disturbance impacts to ungulates and other wildlife, but to a lesser degree than motorized recreation. Keeping impacts of non-motorized recreation within the same footprint of established motorized recreation routes would avoid spreading impact out across the landscape. This concept could apply to the creation of the North-South non-motorized trail concept outlined in the Naneum Plan.
- Maintain a buffer between recreation sites/development and lakes/streams, to avoid impacts to sensitive aquatic species.

### ***Wildlife Mapping***

Both wildlife modeling maps and bull elk collar data maps were incorporated into this planning process. As winter recreation impacts to wildlife are greatly reduced in the basin due to winter elk migrations and the consistent winter snowpack of this mid-high elevation forest, only summer habitat mapping was assessed for this effort. The 2015 Naneum Plan does include a suitability analysis regarding winter recreation and wildlife in the larger planning area which encompasses the Stemilt basin. The following summer elk habitat map was included in the 2007 Stemilt-Squilchuck Community Vision Document and shows critical summer elk habitat in the planning area based on modeling completed by WDFW using known elk habitat preference parameters (Trust for Public Land 2008).

## Stemilt-Suilchuck Recreation Planning Area Elk Habitat Potential



The planning area is defined by the Stemilt Watershed to the south and east, the Mission Ridge Ski Area boundary and Squilchuck Road to the west, and Stemilt Loop Road to the north. Data sources: Stemilt Vision Document 2008, Chelan County GIS. Erin McKay 2016.

Figure 6. Elk Habitat Potential

According to the habitat modeling map, the highest concentration of critical summer elk habitat occurs in Zone 1 in the central part of the basin, in close proximity to the existing green dot road system. The habitat map does not account for the potential disturbance to elk associated with vehicle traffic and high levels of recreational use, but does show the spread of quality habitat across the basin.

WDFW presented additional elk use data during the planning process, based on summer bull elk collar data collected between 2013 and 2017. The following maps show overall bull elk use during the summer and bull elk use during the fall rut in the Stemilt Basin. The first map shows widespread summer bull elk use across the basin, with the exception of the western edge of the planning area. This highlights the importance of wildlife considerations across all recommendations. The bull elk rut data display a concentration of use in Zone 3, which in turn indicates presence of cow elk and potential calving grounds. This data reinforce the importance of maintaining intact habitat in this area of the basin.



## Bull Elk Use within the Stemilt Basin Planning Area

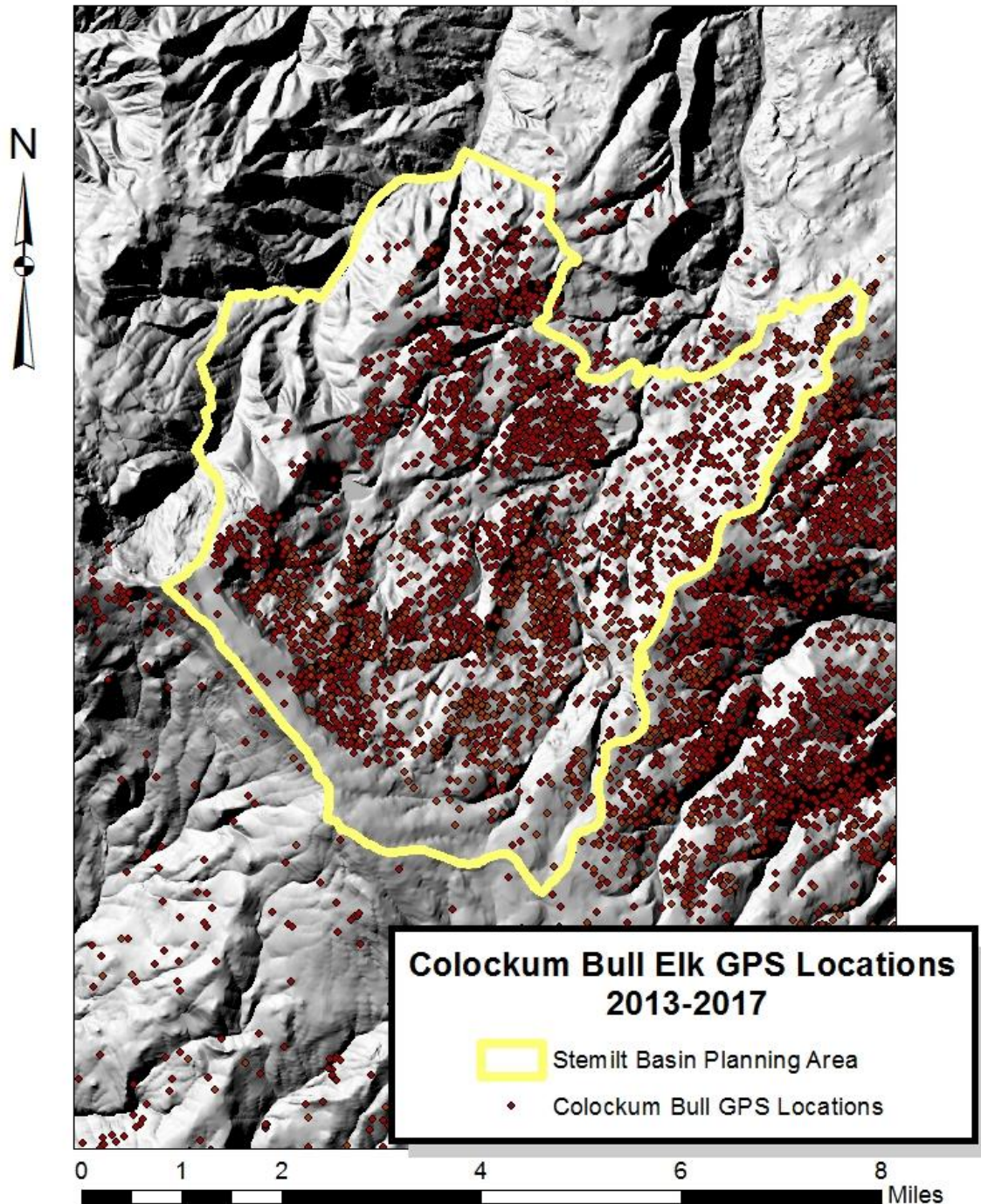


Figure 7. Stemilt Basin Bull Elk Use



## Bull Elk Use During the Rut in the Stemilt Basin Planning Area

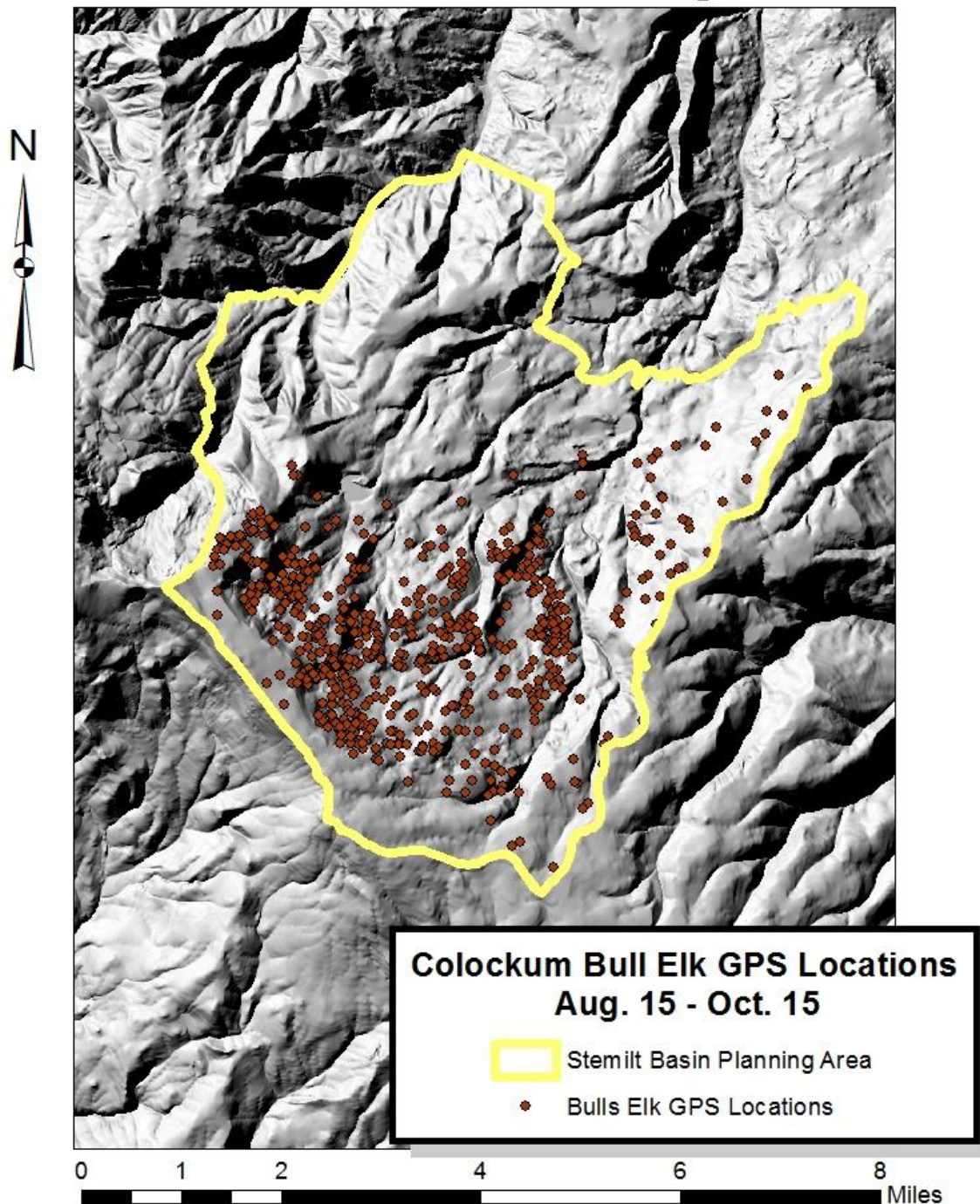


Figure 8. Stemilt Basin Bull Elk Use During Rut

The following excerpt from WDFW review of the elk collar data in terms of recreation planning provides context on how this data can be used to assess overall elk use in the basin:

“The Bull Elk Use within the Stemilt Basin Planning area depicts all the collar location data collected during the bull study from 2013-2017. The Bull Elk During the Rut data only includes collar data from Aug 15-Oct 15. As we have no cow data from this area we will use the bull rutting season information as surrogate data to illustrate probable cow summer ranges. Data from the 2008-2012 Colockum Cow and 2013-2017 Colockum Bull studies indicates Bulls move in to cow summer ranges for the breeding season (rut), therefore we can conclude these areas are highly probable cow elk summer ranges as well. Cow elk will be on summer range from potentially calving, mid-May to mid-June, throughout the summer to the end of the rut in mid-October. Given the more specific Rut Collar Data and the fact that Zone 3 has fewer roads, lakes, camps, etc. that attract people and the associated disturbance we feel that it’s important to limit development of trails and roads in this area and protect it as “core elk summer habitat.” (Maps and excerpt from personal communication with WDFW wildlife biologists)

The maps provided here and the anecdotal information received during the planning process indicate that there is elk use throughout the basin and that impacts to these and other ungulates and wildlife species must be considered in all recommendations. However, the southern portion of the basin (Zone 3) emerged during WDFW review as a priority for limiting recreational development and associated impacts on core summer elk habitat.

## **Chapter 6: Discussion of Alternatives**

### ***Alternatives Considered***

When determining the level at which to plan for recreation in the Stemilt-Squilchuck basin, a range of alternatives had to be considered. Several themes emerged through public comment and survey response, and ultimately an alternative that attempts to balance all values in the basin was chosen. The discussion of alternatives, including a no-action alternative, is as follows.

#### ***No Action Alternative***

The no-action alternative would take a hands-off or status-quo approach to recreation in the planning area. This alternative allows recreation use to play out without pre-planning on what that recreation use should look like, with management only necessary when unacceptable impacts or conflicts arise as a result of recreation use. This alternative was encouraged by some in the public comment period; it is understood that many locals see no problems with the way the basin is currently used recreationally. Under

this alternative, individual groups or landowners could propose recreational developments or activities, and landowners/management agencies would have to assess each proposal piecemeal and ascertain the impacts on wildlife, natural resources, and other recreational groups of these individual proposals.

While this hands-off approach has been used in this area in the past, the impacts of recreation use in the basin are not entirely acceptable to land managers and landowners. Continuing with this approach in a time of increasing use in some parts of the planning area, direction from other planning efforts, and development proposals from private landowners and recreation groups is likely to result in a disjointed management approach that ends up requiring more time and resources than if recreation were addressed comprehensively in a coordinated planning effort across all user groups.

#### *Recreation and Access Alternative*

This alternative focuses on maximizing recreational access (including motorized access) to the planning area, and keeping all areas open to all types of recreation. Many public comments were received pointing out that the planning area is primarily public land, to which no user group should be denied access or recreational opportunity. Comments were also received on desired expansion of recreation routes and opportunities. This alternative would result in increases in access to both motorized and non-motorized recreation on roads and trails, and would not prioritize closures for any area for the purposes of protecting wildlife, natural resources, or specific types of recreation.

While this alternative would benefit some types of recreation, it would come at the cost of impacts to wildlife, natural resources, and the types of recreation that depend on them. For example, increased motorized access to the roads and trails (expansion of the green dot road system or creation of additional motorized trails) would benefit motorized recreationists, but would negatively impact both the amount of quality habitat available for wildlife in the basin, and the opportunity for hunting upon which the presence of wildlife depends. In keeping with the Stemilt Vision Document and the vision statement of this plan, a purely recreation and access based alternative would not be adequate for the protection of wildlife and water resources in the planning area.

#### *Wildlife Habitat Protection Alternative*

This alternative focuses on the protection of wildlife as the primary driver of recreation-based decision making. This approach would preclude any new recreation development, as increased recreation inevitably equates to increased impacts on wildlife. Keeping recreation use at or below current levels would be a targeted management strategy to avoid further impacts to wildlife, and habitat assessments may result in closures of currently available recreation locations or opportunities in order to protect critical or sensitive habitat

Wildlife impacts are a major consideration of this plan, but the Stemilt Vision Document, the 2015 Naneum Plan, and local recreation users also value recreation opportunity and seek ways to implement well thought out recreation opportunities. The wildlife protection alternative alternative may disqualify the concepts put forth by the previous planning efforts as well as this community-based planning effort. While the wildlife protection alternative closely resembles the recommended plan with its wildlife considerations, the plan does recommend the implementation of some non-motorized recreation developments stemming from the Vision Document and the Naneum Plan, in such a manner as to have the least impact on wildlife habitat possible.

### *Balanced Alternative*

This alternative seeks to balance the alternatives listed above, to encourage quality recreation access and opportunity while also protecting critical wildlife habitat and life stages. Prior planning efforts provided many of the concepts contained in this plan, but these concepts needed further assessment and specific planning to ensure that they could meet the goals of the balanced alternative contained in this plan. The plan contains recommendations for both restoration efforts and recreation development. Many of the recommendation developments are not creating new areas but are formalizing existing trails and recreation use sites that are already impacted. The formalization of sites will help contain the impacted area while directing recreationalists to resilient places to recreate and away from sensitive habitat areas.

## **Chapter 7: Recommendations**

Below are the recommended recreation ideas and strategies that package together the various recreation concepts compiled through Recreation Committee meetings and from previous planning documents including the Naneum Ridge to Columbia River Recreation and Access Plan. This selection of alternatives is based on feedback from the Stemilt Partnership, Washington Department of Fish and Wildlife, Washington Department of Natural Resources, and other landowners in response to the draft concepts developed by the Recreation Planning Committee showing the variety of ideas and opportunities that could be considered in the Recreation Plan. Input from the community and other stakeholders was also gathered through outreach and a 90-day public comment period and incorporated into the recommendations by the recreation committee. This selection seeks to balance enhancing recreation opportunities with reducing impacts to the natural and ecological processes for water and wildlife within the basin. This selection includes input from the Recreation Committee, land managers or owners, the Stemilt Partnership, and the community. Final recommendations will be approved by the Stemilt Partnership and land managers/owners.



## Recommendations Common to All Zones

### Roads:

- Green dot roads:
  - Public motorized access is provided on green-dot roads. The green dot road system within the basin (Orr Creek, Lily Lake, Upper Basin Loop Road, Schaller Road, and Pole Flats Road) contains 16.6 miles of road that are open to all motorized (this total does not include Jumpoff Road or Naneum Ridge Road). Maintain public access by addressing maintenance needs on green dot road system.
  - Green dot road density should remain at a level that meets wildlife habitat protection goals on WDFW lands and the maintenance budget and wildfire access needs on all state lands. Any increases or decreases in green dot road mileage should be resource protection-based (for example, road reroutes to protect sensitive areas or alternative routes to resolve recreation related issues). Green dot road proposals will be brought before the state agencies at the green dot road annual meeting, and go through a public process prior to implementation.
  - Continue to evaluate a seasonal closure of the green dot roads accessed from the Stemilt Loop Road to protect road surfaces during spring meltoff, prevent illegal mudding, and prevent wheeled vehicles from driving on groomed snowmobile trails. The seasonal closure would begin when snow starts to accumulate and end on fishing opener in April or earlier in dry years. Consider possibility of allowing off-roading in a different, designated area.
  - Consider closures of green dot roads during times of extreme fire danger.
- Non-green dot roads:
  - Non-green dot roads are currently closed to public vehicle access. Implement effective vehicle closures on these roads such as gates, tank traps, natural obstacles, in conjunction with red dot signs. The current high density of non-legal roads in the basin affects wildlife and resources, and will be reduced over time according to this plan and agency management goals.
  - The Stemilt Partnership Roads Committee provides a stakeholder panel in an advisory role to review proposals for placing barriers on non-green dot roads to ensure all access needs, such as private property, irrigation district infrastructure, forestry, etc. can still be met. The Roads Committee also reviews green dot road proposals such as seasonal closures and re-routes, and can provide suggestions or comments on proposals to aid agency/landowner decisions.
- A comprehensive road inventory and analysis should be completed to evaluate Stemilt Basin roads for the following criteria: resource protection, protection of

water user easements, public safety, and importance for recreation and management access. This analysis would provide a priority order for enforcement of non-green dot road closures through barriers or de-commissioning.

- Create signs at strategic access points, trailheads, campgrounds, gates, and barriers that describe the green dot road system and allowed uses.

### **Camping, Day-Use, Trails:**

- All improved campsites should include a buffer zone to protect shorelines and meadows.
- Dispersed camping opportunities that are in compliance with the green dot road regulations will remain available along the green dot road system.
- Engage in collaborative effort between land management agencies to seek additional funding for long-term maintenance of any camping/trailhead facilities before they are installed.
- Consider seasonal closures of new and existing trails/routes to protect wildlife, particularly during elk calving season. Seasonal closure dates and locations will be based on input from WDFW wildlife biologists, and would follow the elk calving season of spring-early summer.
- WDFW recommends completion of a habitat and road inventory and assessment to determine appropriate trail locations to minimize impacts to natural resources. WDFW recommends limiting new trail development to Zones 1 and 2.
- Consider new trail development within existing open road buffers where possible, to minimize impact of new trail development on wildlife. This could allow for a north/south trail as noted in the Nanuam Plan, while minimizing fragmentation of habitat and impacts to wildlife.

### **Education and Enforcement:**

- Promote a more active education and enforcement presence, especially along the Upper Basin Loop Road in Zone 1. Coordinate across agencies to provide consistent enforcement of green dot road regulations and to share the burden of law enforcement presence. Patrol high use areas to enforce green dot road regulations, shooting restrictions, illegal dumping, and promote resource protection and public safety. Increased education and enforcement will depend on identification of additional funding.

- Focus a collaborative effort between WDFW, DNR, Chelan County Fire Marshall's Office, and Chelan County Sheriffs Office to identify a funding strategy to meet enforcement needs in the basin.
- Collaborate with fire agencies on fire education and enforcement to reduce risks of human-caused wildfire and enable effective agency response to wildfire.

**Noxious Weeds:**

- Agencies should take appropriate action to address weed control in high use recreation areas, roadsides, waterways, and trailheads, and other areas that will be prone to disturbance under the proposed uses in the recommendations.

**Implementation and Maintenance:**

- All recommendations will undergo appropriate environmental review and permitting prior to implementation.
- Long term funding and maintenance strategies will be in place prior to implementation.

**Zone 1**

Use in Zone 1 is concentrated along the green dot road system comprising the Upper Basin Loop Road and Orr Creek Road and is primarily motorized access-based.

**Zone 1: Summer Preferred Alternative**

**Roads:**

- Grade and maintain the green dot roads to high use recreation sites such as Clear Lake so passenger vehicles can continue to access these sites. Coordinate between agencies, landowners, and irrigation districts to assess options for road maintenance cost-shares.
- Maintain sections of the rest of the Upper Basin Loop Road and other green dot roads most needing improvements. The goal for these roads is to at a minimum maintain access for vehicles with four wheel drive.
- Consider designating a green dot 'connector' road between Upper Wheeler Road and Orr Creek Road in Section 20, to complete a legal motorized access route between Upper Wheeler and Orr Creek Roads. This connector would be open to public access, and would be subject to seasonal closures for wildlife and road surface protection. The goal of this connector road would be to alleviate illegal motorized activity on Wenatchee Heights Reclamation District infrastructure at

Upper Wheeler Reservoir, limit use of the non-green dot road leading from the end of Upper Wheeler Road to the reservoir, and allow a legal access route for authorized users from Forest Ridge to the green dot road system. WDFW (landowner) approval would require a commitment from Chelan County to restrict motor vehicle use on Upper Wheeler Road beyond the junction of the 'connector' road and the Upper Wheeler Road. This would in turn entail a County vacation of the segment of Upper Wheeler Road beyond the junction with the connector road, through public process and resolution by the Board of County Commissioners. Irrigation districts would retain access to Upper Wheeler Reservoir as needed.

**Camping, Day-Use, and Trails:**

- For camping and day-use improvements, existing impacted areas will be used; the focus will be on accommodating existing use at peak to average times and reducing spread of impacts.

**Lily Lake (Section 22):**

- While interest in improvements to recreational facilities at Lily Lake has been expressed in prior planning efforts, no development is proposed for Lily Lake through this planning effort. WDFW will work on developing a management strategy for recreation on the newly acquired Sections 22 and 16..
- Options for addressing current recreational impacts in a restorative manner will be assessed through WDFW agency planning efforts under habitat protection guidelines from USFWS.
- Assess options for designating non-motorized trails near Lily Lake. Improve the existing trail around Lily Lake for walking and hiking use.

**Clear Lake (Section 23):**

- Formalize camping sites within the currently used area for recreation use. Delineate sites by placing natural edges around the sites. Ensure all campsites have an appropriate fire ring to contain existing campfires and a picnic table. 5-8 walk-in campsites are possible within the current footprint. Allow room to create additional sites in the future if needed.
- Formalize and improve a parking area and trailhead for day-use including fishing, hunting, hiking, biking, and equestrian use on designated routes. The trailhead should include a vault toilet, trash container, and interpretive and regulatory signs sharing information on rules, expected behaviors, natural and cultural resource information. The parking area should include a pull-through for equestrian/trailer use and 15-18 parking spots.

- Assess options for designating non-motorized trails near Clear Lake. Trails could be conversion of non-green dot roads to trails or occur within road buffers of existing open roads. Improve the existing trail around Clear Lake for non-motorized use.
- See design concept in Appendix B.

### **Upper Wheeler Reservoir Access (Section 29):**

#### ***Phase I:***

- Improve the parking area and trailhead near the existing gate for day-use including fly-fishing, hunting, hiking, and wildlife viewing. The trailhead should include a sign identifying rules and regulations (for example, mountain biking on Wenatchee Heights Reclamation District property is not allowed). 5-7 parking spots.
- Extend green dot road designation to include improved parking area. Provide additional parking at road junction Orr Creek/Upper Basin Loop Road. 5-7 parking spots.
- Continue to allow dispersed camping at the road junction of Orr Creek/Upper Basin Loop Road, within green dot regulations.
- See design concept in Appendix B.

#### ***Phase II:***

- Assess the need for a vault or pit toilet for day use at the improved parking for Upper Wheeler Reservoir access.

### **Steffen's Meadow (Section 28):**

#### ***Phase I:***

- Formalize camping at Steffen's Pond/Meadow to reduce spread of impacts and contain off-road motor vehicle use. Delineate some of the high-use sites by placing natural edges around the sites and restoring vegetation. The campsites will include fire rings to contain existing campfires. 2-3 campsites with vehicle access.
- Formalize a parking area and trailhead for day-use including fishing, hunting, hiking, biking, and wildlife viewing. The trailhead should include educational and interpretive signage to identify rules and regulations and inform the public of the importance of natural resource conservation. 5-8 parking spots.
- Formalize and designate non-motorized trails near Steffen's Meadow. Some of these trails could be conversion of non-green dot roads to trails or formalizing user-created trails. Dispersed campsites will remain available in the meadow, with walk-in access.
- See design concept in Appendix B.

#### ***Phase II:***

- Develop a toilet for day and camping use. This would be phased in to align with the improvements to the green dot road system.

### **All Other Dispersed Sites along Orr Creek/Stemilt Road Loop:**

#### ***Phase I:***

- Maintain all existing dispersed sites that are off the primary Stemilt/Orr loop road that are in compliance with the green dot motorized use rule (within 100' of green dot road). Close or convert to walk-in only all other dispersed sites that are more than a 100' off the road. Restore impacted areas if any dispersed campsites are closed.
- Monitor use and impacts at these sites and evaluate use levels to see if additional facilities such as metal fire rings, pit toilets, and borders are needed to contain impacts/hazards.

#### ***Phase II:***

- Provide facilities at the dispersed campsites including delineating sites, fire rings, and backcountry style toilets as needed based on monitoring results.

### **Other Trails:**

- Create a trailhead/ parking area at base of Upper Wheeler Road (Section 10); 5 parking spots. Add signage identifying rules and regulations.
- Continue to assess non green dot roads for conversion to non-motorized trails.
- Assess additional opportunities to create sustainable new trails along the existing green dot road corridor buffer. Evaluate trail proposals for potential impacts to water and wildlife.

### **Target Shooting**

- Designate no target shooting zones around high use areas for day-use and camping; dispersed target shooting is allowable following WDFW Public Conduct Rules. Post signs to help achieve compliance with this rule.

## **Zone 1- Winter**

### **Sno-Park:**

- Maintain adequate parking at maintained sno-parks for snowmobile access to Stemilt Basin.
- Create a sno-park at the base of Upper Wheeler Road with a seasonal toilet and adequate parking for non-motorized winter snow sports (snowshoe, backcountry ski, cross-country ski, fat-tire bike). Alternative non-motorized parking could be located at Orr Creek Road. Work with non-motorized winter recreation group to identify optimal location for access to non-motorized area in Section 16.

- As part of the seasonal green dot road closure proposal, close gates at snoparks when snow falls to prevent wheeled vehicles from driving on groomed snowmobile trails.

### **Trails:**

- Continue existing groomed snowmobile trail program. Trails in Sections 16 and 22 will be subject to WDFW evaluation of winter recreation impacts to habitat and consultation with US Fish and Wildlife Service for recreation restrictions tied to funding.
- Designate non-motorized winter play areas per the Naneum plan concept (including the Lake Clara area on WDFW Section 23 identified in the Naneum Plan). The boundary of this area represents a compromise between winter motorized and non-motorized users. The non-motorized winter use area will be accessible from Squilchuck State Park, Mission Ridge Ski Area, and Section 16. Identify and mark routes within non-motorized area for snowshoeing, cross-country skiing, back-country skiing, and fat-tire biking.
- Assess feasibility of designating a snowmobile route link to allow Forest Ridge residents who are authorized to use the Noyd Easement to access the groomed snowmobile system; the route will minimize the distance traveled through the proposed non-motorized winter recreation area. Create an annual permit system for residents of Forest Ridge that includes an educational component on the routes available for motorized use and stewardship of the area; users of this snowmobile link will agree to stay on the designated route. This route may intersect with private property; if so an agreement must be made between Forest Ridge residents and the private landowner.

### **Zone 2**

Use in Zone 2 is concentrated around Squilchuck State Park and Mission Ridge expansion area, and is primarily non-motorized.

### **Zone 2- Summer**

### **Trails**

- Assess feasibility of creating a north-south non-motorized trail per the Naneum Ridge Plan. This trail should be located mostly be in zone 2. Explore the potential for a high elevation route within the buffer of the existing road corridors along Mission Ridge and Naneum Ridge roads. Locate trail to ensure high quality user experience. Consider seasonal trail closures during critical wildlife periods as part

of the proposed trail as per WDFW recommendations. As referenced in the Naneum Plan, Squilchuck State Park and Mission Ridge could provide access points for the north-south trail.

- Mission Ridge plans to implement non-motorized multi-use trails linking the Mission Ridge expansion area with Squilchuck State Park and Scout-A-Vista. Trail connectors will be primarily located in the NW corner of Section 19, and include connections with Scout-A-Vista property and Squilchuck State Park.
- Consider a seasonal closure of trails in this area to protect wildlife, if trails are located in elk calving areas. WDFW will determine locations and duration of seasonal closures on WDFW land. Closures will be communicated via trailhead signage and online notices.
- Noyd Road Easement currently does and will continue to provide designated motorized vehicle access route for authorized Forest Ridge residents to access Upper Wheeler Road. Implement an annual permit issued for residents that includes educational material and acknowledgment of the rules and regulations of the area. A seasonal closure may also be implemented as needed to protect road conditions, wildlife, and water.
- Consider strategic fuel breaks and wildfire/fuels reduction planning with trail development.

### **Trailheads and Signage**

- Create a trailhead at the main Mission Ridge parking lot with signage, vault toilet, and garbage collection for hikers going into Stemilt and to Lake Clara. This trailhead will be for non-motorized access into Stemilt and Lake Clara.
- Develop educational signage to inform visitors about the risk of fires, ways to prevent forest fires, and seasonal trail closures to protect wildlife and/or the trails at all trailheads.
- Create signage for clarification of trail use types. Use signage to delineate uses for different trails (hiker, equestrian, mountain bike).

### **Camping**

- Provide additional signage on boundaries of Squilchuck State Park to alleviate private property issues (people camping on private property).
- Consider expanding camping opportunities in Squilchuck State Park (and possibly Mission Ridge property) according to recreation development planning by Washington State Parks and private landowners.



## Zone 2 Winter

### Trails

- Create/mark a non-motorized snowshoe/backcountry ski trail from Squilchuck State Park to Mission Ridge (likely utilizing a summer trail platform).
- Create groomed cross country ski trails in Section 19 and NE ¼ Section of 30. Evaluate feasibility of connecting to cross country ski trails in Section 17.
- Designate non-motorized winter play areas per the Naneum plan concept (including the Lake Clara area on WDFW Section 23 identified in the Naneum Plan). The boundary of this area represents a compromise between winter motorized and non-motorized users. See Appendix E for more detail on the evolution of this proposal and implication for both user groups. The non-motorized winter use area will be accessible from Squilchuck State Park, Mission Ridge Ski Area, and Section 16. Identify and mark routes within non-motorized area for snowshoeing, cross-country skiing, and fat-tire biking.

### Sno-parks

- Identify non-motorized winter parking locations at Squilchuck State Park, access to Section 16 (Orr Creek or Upper Wheeler Road) and potentially on Mission Ridge property. Work with Washington State Parks Winter Recreation Program to organize non-motorized sno-parks.

## Zone 3

### Zone 3 – Summer

### Trails

- Continue to provide dispersed hiking opportunities in Zone 3, both off trail and on non-green dot roads that are currently closed to vehicle traffic. WDFW does not support designated trail development in Zone 3 (other than a north-south trail as per Naneum Plan), due to its high value as core summer elk habitat.
- Maintain undeveloped nature of area east of Mission Ridge ski area and north of Naneum Ridge (west of groomed snowmobile trails and green dot roads) by leaving the area primitive and used by non-motorized users (this concept applies for both summer and winter).

### Roads:

- Prioritize enforcement of closures of non-green dot roads (barriers) in Zone 3 to conserve large areas of contiguous high quality wildlife habitat.

- Consider seasonal closure of Pole Flats road (closed for core summer elk habitat, open in fall for hunting). WDFW recommends this seasonal closure if increased recreation-related wildlife disturbance occurs as a result of recreation plan developments.

### Zone 3 – Winter

- Consider creating a seasonal winter warming hut at Four Corners on the groomed snowmobile trail system, with a toilet.
- Consider creating a seasonal back-country hut or yurt on Naneum Ridge in Section 36 for non-motorized winter use, with a toilet. Assess feasibility of non-motorized summer use of hut system as well (for example, as part of a larger hut-to-hut system for hiking or mountain biking).
- Maintain a non-motorized play area in the high elevation terrain east of Mission Ridge Ski Area, as per the winter non-motorized area mentioned above. This area is accessible to non-motorized travelers due to its proximity to the ski area and Squilchuck State Park, and is agreed upon by both user groups (see winter recreation map).
- Maintain quality high-elevation off-trail play areas for snowmobile access in terrain closer to the groomed snowmobile routes, traditionally used for off-trail snowmobiling (see winter recreation map).

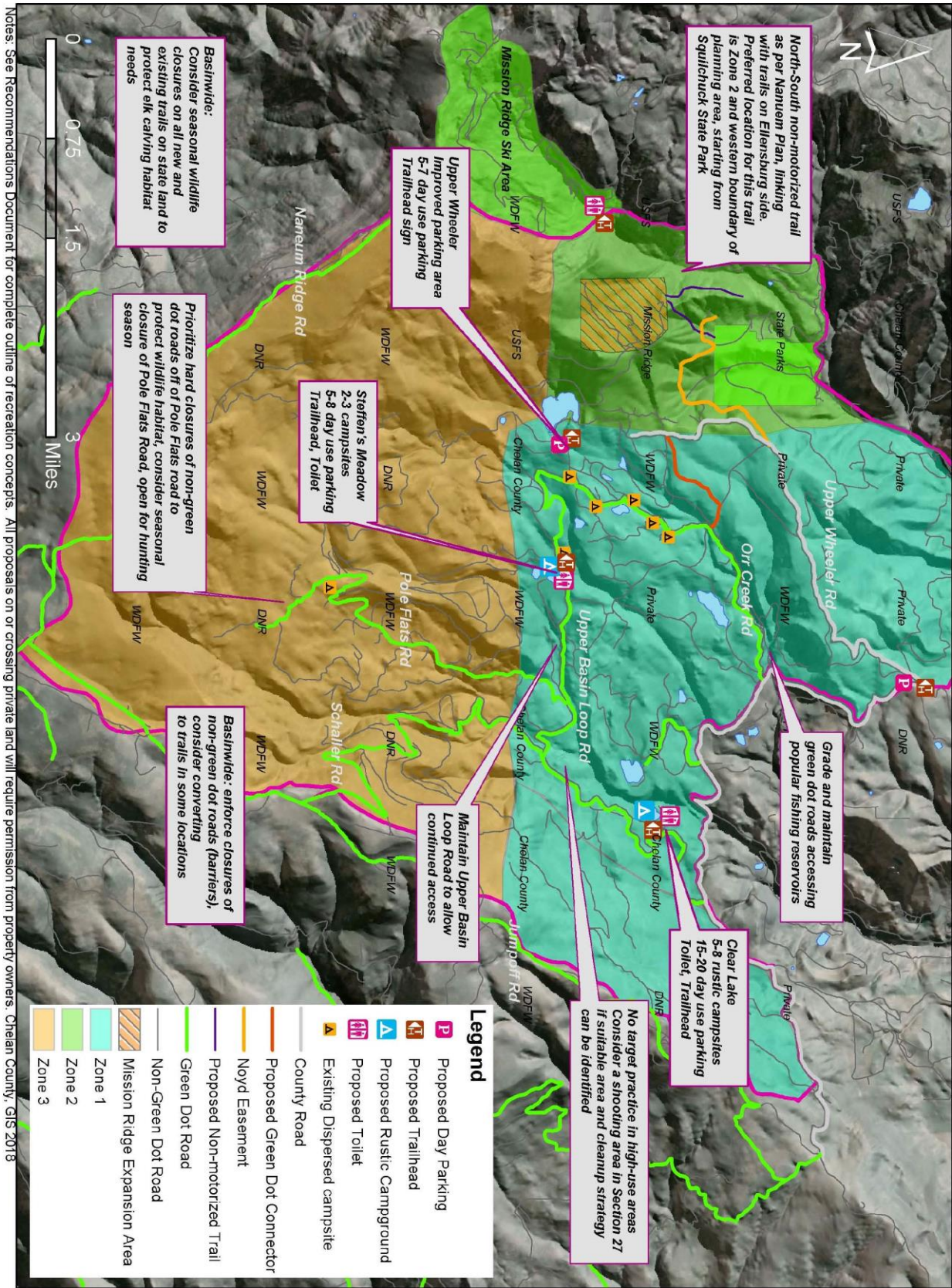
### Maps

See the following maps for visual representation of the recommendations. Not all recommendations can be mapped, and the combination of the written document and maps is necessary for a comprehensive description. See Exhibit E for a detailed explanation of the winter non-motorized recreation proposal process.

Figure 9. Summer Recommendations Map, See Below

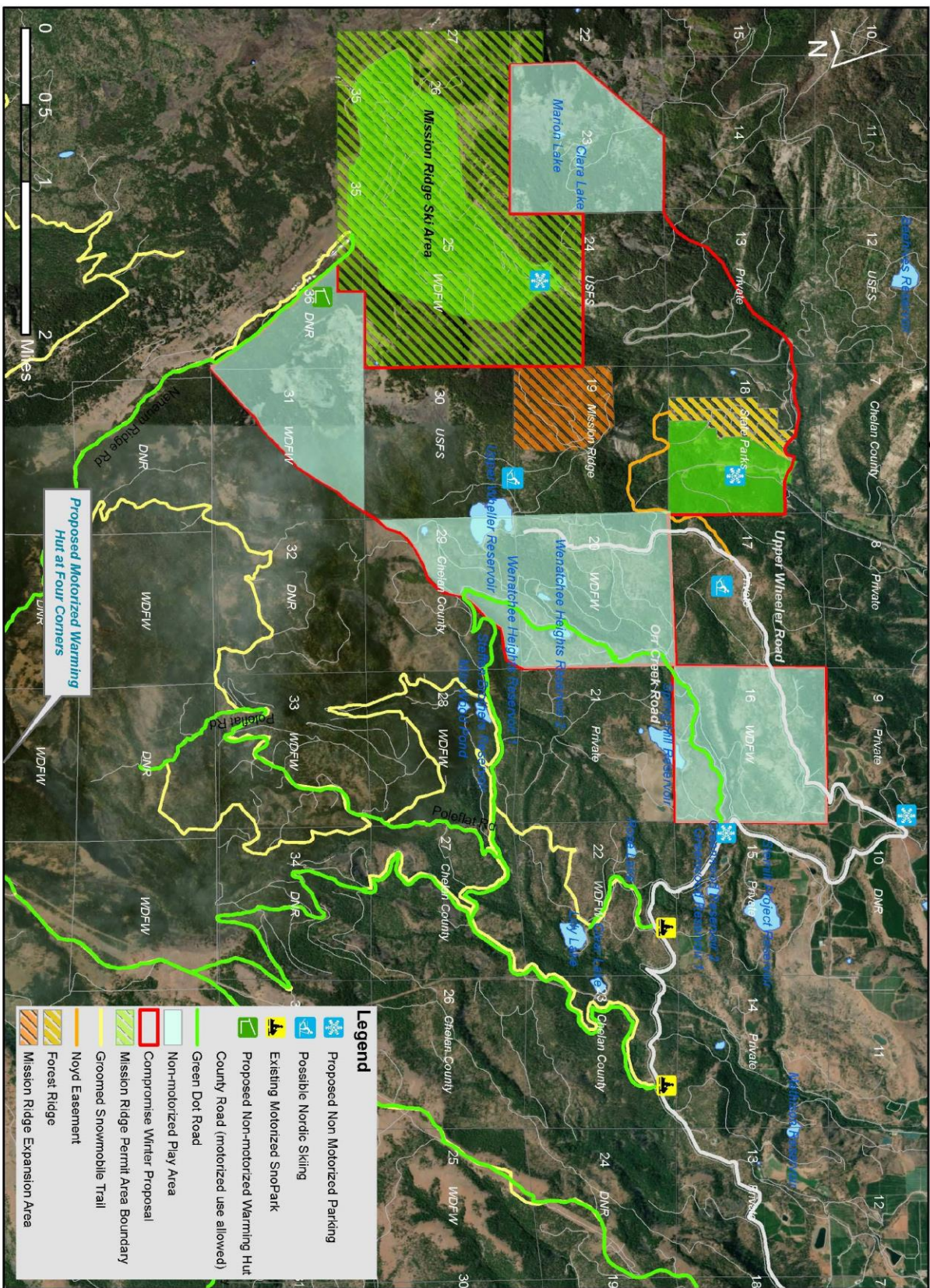
Figure 10. Winter Recommendations Map, See Below

Stemitt-Squilchuck Recreation Planning: Summer Recommendations





Stemilt-Squilchuck Recreation Planning: Winter Recommendations



## Chapter 8: Implementation

### *Implementation Framework*

This plan is intended to lay the foundations for a collaborative path to implementation. Although the Chelan County Natural Resources Department led the effort to develop this plan, many of the recommendations outlined that are outside of Chelan County jurisdiction will ultimately be implemented by the respective landowners, management agencies, nonprofits, or recreationists. The implementation of the Plan's recommendations is intended to be developed over time as funding and opportunities arise. In many cases, grants will be needed to help support the recommendations and a list of potential funding sources can be found in Appendix D. Environmental review, design work, documentation, and necessary permits will also be needed to implement many of the recommendations. It is envisioned that agencies, recreationists, non-profits, conservation groups, and individuals will all work together to help implement the Plan's recommendations. Volunteers and education facilities can offer a wealth of support and resources to the group.

The following are early action recommendations that were identified as priorities through input on surveys by the Recreation Committee and Stemilt Partnership as being ripe for implementation and/or having a great deal of support for completing ahead of other recommendations in the Plan. Each of these early action items could feasibly be initiated and even completed in the next one to five years. Some items are ongoing and will continue as high priority elements over the planning duration. These actions are intended to improve visitor experience, protect natural resources, and enhance awareness of the basin and its recreation resources. Cost estimates are not provided as many of the recommendation will need to go through its own planning and design process which would include developing a budget. These early actions are not listed in any particular order for implementation and they can be implemented simultaneously. Various individuals and organizations have come forward to volunteer to help with implementing these recommendations. A preliminary list of implementers is included in the table below.

### **Recreation Implementation Priorities**

<b>Action/Recommendation</b>	<b>Suggested Partners (not in priority order)</b>	<b>Implementation/Restoration Steps</b>
<b>Green dot roads</b>		



Maintain public access by addressing maintenance needs on 16.6 mile green dot road system in the Stemilt Basin. Grade and maintain roads to high use recreation sites such as Clear Lake for passenger vehicles, and other road sections for 4 X 4 vehicle access.	DNR, WDFW, Chelan County, irrigation districts	On-going
Open a green dot 'connector' road between Upper Wheeler Road and Orr Creek Road in Section 20, to complete a legal motorized access route from Forest Ridge to the green dot road system. This connector would be open to public access, and would alleviate issues of motorized impacts and trespass at Upper Wheeler Reservoir. For winter access, assess feasibility of designating a snowmobile route link to allow authorized Forest Ridge residents to access the groomed snowmobile system. The final route should be the least impactful to the proposed non-motorized area.	Forest Ridge residents, WDFW, El Sendero, Apple Country Snowmobile Club, Wenatchee Valley Ridge Runners ATV Club	<p>Winter:</p> <ol style="list-style-type: none"> <li>1. Assess different route options for a winter snowmobile connector on the ground.</li> <li>2. Select an option that allows public access and provides the least impact to the non-motorized area, working with private landowners if needed.</li> <li>3. Develop a permit system for forest ridge residents wanting to access this connection.</li> </ol> <p>Summer:</p> <ol style="list-style-type: none"> <li>1. Public input process</li> <li>2. Chelan County Public Works process for County Road vacation</li> <li>3. Board of County Commissioners resolution</li> <li>4. Revise green dot road maps</li> </ol>
Consider a seasonal closure of the green dot roads during spring melt off, prevent illegal mudding, and prevent wheeled vehicles from driving on groomed snowmobile trails.	WDFW, DNR, Chelan County, Stemilt Partnership Roads Committee, Apple Country Snowmobile Club, private landowners at access points	<ol style="list-style-type: none"> <li>1. Convene Stemilt Roads Committee to put together a proposal</li> <li>2. Present to agency green-dot committee</li> <li>3. Public input process</li> <li>4. Implement closure</li> <li>5. Conduct outreach and education to recreation users with assistance from user groups.</li> </ol>

<b>Non-green dot roads</b>		
<p>Non-green dot roads are currently closed to public vehicle access. Implement effective vehicle closures on these roads such as gates, tank traps, or natural obstacles. Zone 3 and non-green dot roads off Pole Flats Road are a priority to preserve contiguous areas of habitat.</p> <p>A comprehensive road inventory and analysis should be completed to identify priorities for non-green dot road closure enhancements.</p>	<p>WDFW, DNR, Chelan County, Wenatchee Sportsmen Association, Stemilt Partnership Roads Committee</p>	<ol style="list-style-type: none"> <li>1. Identify funding or technical resources for a comprehensive roads inventory</li> <li>2. Conduct the roads inventory and identify priority road closure barriers/decommissioning (other priority closures may be identified prior to an inventory, based on wildlife/resource damage)</li> <li>3. Convene roads committee to advise agencies/landowners on priority recommendations</li> <li>4. Identify funding and grants to help implement</li> <li>5. Conduct cultural resources review, SEPA generally not needed</li> <li>6. Construct barriers on priority non-green dot roads</li> <li>7. Conduct outreach and education to the community with assistance from user groups</li> </ol>
<p>Create signs at strategic access points, trailheads, campgrounds, gates, and barriers that describe the green dot road system or other rules/allowed uses.</p>	<p>DNR, WDFW, Chelan County, Wenatchee Sportsmen Association, Apple Country Snowmobile Club, El Sendero, other user groups</p>	<ol style="list-style-type: none"> <li>1. Develop messaging for signs</li> <li>2. Test the sign messaging for effectiveness</li> <li>1. Identify funding source for implementation</li> <li>2. Implement signage</li> </ol>

<b>Education and Enforcement</b>		
Promote a more active education and enforcement presence, especially along the Upper Basin Loop Road in Zone 1.	Chelan County Sherriff's Office, WDFW and DNR enforcement, 'eyes in the woods' volunteers	<ol style="list-style-type: none"> <li>1. Convene WDFW, DNR, and Chelan County Sheriff's Office to identify a strategy to meet enforcement needs in the basin.</li> <li>2. Search for grants and other funding revenue, volunteer assistance to increase enforcement.</li> <li>3. Develop an outreach and education strategy to share about rules and affect visitor behavior.</li> </ol>
Encourage and assist recreation user groups and volunteers conducting regular clean-ups of the basin	WDFW, DNR, Chelan County, Apple Country Snowmobile Club, Wenatchee Valley Ridge Runner ATV Club, Wenatchee Flyfishers	<ol style="list-style-type: none"> <li>1. Convene interested groups</li> <li>2. Conduct outreach to volunteers</li> <li>3. Host clean-up days</li> <li>4. Provide assistance such as trailers/trash hauling</li> </ol>
<b>Summer Use: Camping, Day-Use, Trails</b>		
<b>Maintenance</b>		
Engage in collaborative effort between land management agencies to seek additional funding for long-term maintenance of any camping/trailhead facilities before they are installed.	WDFW, DNR, Chelan County	<ol style="list-style-type: none"> <li>1. Convene land managers</li> <li>2. Develop strategy</li> <li>3. Identify and pursue grant funding sources</li> </ol>
<b>Camping and Day-Use</b>		

Dispersed camping opportunities that are in compliance with the green dot road regulations will remain available along the Upper Basin Loop Road.	WDFW, DNR, Chelan County	On-going, monitor sites for resource damage/maintenance needs
<p>Lily Lake (Section 22): Options for addressing current recreational impacts at Lily Lake in a restorative manner will be assessed through WDFW agency planning efforts under habitat protection guidelines from USFWS.</p> <p>Assess options for designating non-motorized trails near Lily Lake. Improve the existing trail around Lily Lake for walking and hiking use.</p>	WDFW, Stemilt Irrigation District	<ol style="list-style-type: none"> <li>1. WDFW determine recreation opportunities and constraints for Lily Lake.</li> <li>2. Develop concepts for restoration and recreation at Lily Lake including potential trail improvements.</li> </ol>
Clear Lake (Section 23): Formalize and delineate 5-8 camping sites. Formalize and improve a parking area for day-use with 15-20 parking spots. The trailhead should include a vault toilet, trash container, and interpretive and regulatory signs. Formalize the existing trail around Clear Lake.	Chelan County, Stemilt Irrigation District	<ol style="list-style-type: none"> <li>1. Identify funding for construction and long-term maintenance.</li> <li>2. Work with Stemilt Irrigation on potential improvements</li> <li>3. Conduct environmental review and permitting</li> <li>4. Construction.</li> </ol>
<p>Upper Wheeler Reservoir Access (Section 29): Improve the parking area for 5-7 spots near the existing gate for day-use. Include signage.</p> <p>Extend green dot road designation to include improved parking area.</p>	<p>Chelan County, Wenatchee Valley Fly Fishers,</p> <p>Wenatchee Heights Reclamation District</p>	<ol style="list-style-type: none"> <li>1. Identify funding for maintenance and construction.</li> <li>2. Conduct environmental review and permitting</li> <li>3. Construction</li> </ol>

Steffen's Meadow (Section 28): Formalize 2-3 camping spots at Steffen's Pond/Meadow to reduce spread of impacts. Formalize a parking area for 5-8 spots and include educational and interpretive signage to identify rules. Formalize existing trails near Steffen's Meadow for walking and foot access to meadow.	WDFW, Chelan County, Stemilt Irrigation District	<ol style="list-style-type: none"> <li>1. Identify funding for maintenance and construction.</li> <li>2. Conduct environmental review and permitting</li> <li>3. Construction</li> </ol>
<b>Trails</b>		
Consider seasonal closures of new and existing trails/routes to protect wildlife, particularly during elk calving season. Seasonal closure dates and locations would be based on input from WDFW wildlife biologists, and would follow the elk calving season of spring-early summer.	WDFW, DNR, Chelan County, Wenatchee Sportsmen Association	<ol style="list-style-type: none"> <li>1. Convene land managers to develop proposed timing and locations of the proposed closure.</li> <li>2. Public input process</li> <li>3. Implement closure</li> <li>4. Outreach and education to the community</li> </ol>
Undertake feasibility study for north-south trail as per the Naneum Ridge Plan, primarily in Zone 2. Explore the potential for a high elevation route within the buffer of the existing road corridors along Mission Ridge and Naneum Ridge roads. Locate trail to ensure high quality user experience. This could potentially be done in conjunction with Mission Ridge's expansion project.	DNR, State Parks, WDFW, Chelan County, TREAD, Evergreen Mountain Bike Alliance, Mission Ridge	<ol style="list-style-type: none"> <li>1. Identify funding</li> <li>2. Convene a trail study to assess route options.</li> <li>3. Develop designs for a feasible route</li> <li>4. Environmental review and permitting.</li> <li>5. Construction</li> </ol>
<b>Trailheads and Signage</b>		
Create a trailhead at the main Mission Ridge parking lot with signage, vault toilet, and garbage collection for hikers going into Stemilt and to Lake Clara.	Mission Ridge, Wenatchee Outdoors, TREAD, Chelan County	<ol style="list-style-type: none"> <li>1. Identify funding.</li> <li>2. Develop a concept design.</li> <li>3. Conduct environmental review and permitting.</li> <li>4. Construct.</li> </ol>



Develop educational signage and information to inform visitors about the risk of fires, ways to prevent forest fires, and seasonal trail closures to protect wildlife and/or the trails at all trailheads.	DNR, WDFW, Chelan County, State Parks	<ol style="list-style-type: none"> <li>1. Develop messaging for signs</li> <li>2. Test the sign messaging for effectiveness</li> <li>3. Identify funding source for implementation</li> <li>4. Implement signage</li> </ol>
<b>Target Shooting</b>		
Designate no target shooting zones around high use areas for day-use and camping; dispersed target shooting is allowed following WDFW Public Conduct Rules. Post signs to help achieve compliance with this rule.	WDFW, Chelan County	
<b>Winter Use: Sno-park, Trails</b>		
<b>Sno-Park</b>		
Maintain adequate parking at maintained sno-parks for snowmobile access to Stemilt Basin. With any closures of established sno-parks, assess opportunities for new parking opportunities and assist local groups with establishment of alternative sno-park.	Chelan County, State Parks, WDFW, Apple Country Snowmobile Club, Wenatchee Valley Ridge Runners ATV Club	<ol style="list-style-type: none"> <li>1. Identify and assess opportunities to replace parking for winter snowmobiling with any sno-park closure.</li> <li>2. Identify a preferred option.</li> <li>3. Conduct any needed SEPA or cultural resource review.</li> <li>4. Construct and maintain parking for snowmobiles.</li> </ol>
<b>Trails</b>		
Maintain existing groomed snowmobile trail system.	State Parks, Apple Country Snowmobile Club	On-going

Maintain quality high-elevation off-trail play areas for snowmobile access in terrain closer to the groomed snowmobile routes, traditionally used for off-trail snowmobiling.	WDFW, DNR, Chelan County, Apple Country Snowmobile Club	On-going
Designate and establish non-motorized winter play areas and trails. This includes sections of zone 1, zone 2 and zone 3. Identify and mark routes within non-motorized area for snowshoeing, cross-country skiing, back-country skiing, and fat-tire biking.	El Sendero, Apple Country Snowmobile Club, Wenatchee Outdoors, TREAD, WDFW, DNR, Chelan County, Mission Ridge	<ol style="list-style-type: none"> <li>1. Convene implementation group</li> <li>2. Conduct on the ground GPS work and marking to better delineate the boundaries</li> <li>3. Mark winter non-motorized routes for skiing, snowshoeing, fat-tire biking.</li> <li>4. Share and educate users about the non-motorized area</li> <li>5. Determine most suitable location for snowmobile cross-through from Forest Ridge, mark intersections</li> <li>6. Share proposal with the USFS for consideration in their winter travel management plan.</li> <li>7. Provide annual updates on implementation status</li> </ol>
<b>Huts</b>		
Consider creating a seasonal warming hut at Four Corners on the groomed snowmobile trail system, with a toilet.	DNR, Apple Country Snowmobile Club	<ol style="list-style-type: none"> <li>1. Develop a concept design for the hut and facilities.</li> <li>2. Conduct environmental review and permitting.</li> <li>3. Identify funding.</li> <li>4. Construct</li> </ol>

Consider creating a seasonal back-country hut or yurt on Naneum Ridge in Section 36 for non-motorized winter use. Assess feasibility of non-motorized summer use of hut system.	DNR, El Sendero, TREAD, Evergreen Mountain Bike Alliance	<ol style="list-style-type: none"> <li>1. Develop a concept design for the hut. Consider winter and summer use.</li> <li>2. Conduct environmental review and permitting.</li> <li>3. Identify funding.</li> <li>4. Construct.</li> </ol>
---	--	--

### ***Coordination and Roles***

#### *Implementation Committee's Role*

- An implementation committee will be formed to help guide implementation of the Plan's recommendations, develop a shared annual work plan, and address any continuing issues or opportunities that arise. The role of committee members is described below:
- Participates in meetings representing the views and expertise of their organization and interest from the larger community.
- Provides support, expertise, direction, and work on annual work plans, products, and other necessary elements of implementing the plan.
- Seeks and organizes technical assistance and financial grant applications.
- Organizes and coordinates volunteer opportunities.
- Helps monitor effectiveness of the Plan's actions.

#### *Coordinator's Role*

Coordination is an important role and vital to the success of implementing the plan. Chelan County Natural Resource Department will continue to provide leadership and coordination of the recreation plan implementation and convene the implementation committee. The primary coordinator responsibilities are described below.

- Organizes and convenes committee meetings.
- Facilitates development of an annual work plan and year-end progress report.
- Provides an organizational link to government agencies, non-profit organizations, and the public.
- Engages the partners keeping them apprised of activities, grants, and other opportunities for partnership projects.

While Chelan County is the lead coordinator, Chelan County is not the lead for implementing actions outside of County lands.

#### *Volunteer Labor*

- Many recreation areas are maintained and celebrated through the work of dedicated volunteers and organizations. Existing organizations, such as Wenatchee Sportsmen Association, Evergreen Mountain Bike Alliance, Apple Country Snowmobile Club, Wenatchee Valley Ridge Runners ATV Club, El Sendero Backcountry Ski and Snowshoe Club, Backcountry Horsemen, and Washington Trails Association are examples of partner organizations engaged in volunteer service. Volunteer efforts can support the implementation of the Plan's recommendations and foster a sense of stewardship and ownership by recreation users. Example projects include adopting a site for maintenance, providing labor for special project events, planting trees and restoring riparian areas, conducting volunteer patrols, developing interpretive stories, and organizing cleanup campaigns and/or community celebrations.
- To use volunteer assistance most effectively, a volunteer program should be established.
- Components of a successful volunteer program include (1) volunteer coordinator, (2) task identification, (3) training and recruitment, and (4) rewards and recognition.
- It is recommended that Memorandums of Understandings (MOUs) be developed and signed between volunteer organizations and the land managers. MOUs are not legally binding but clearly spell out the roles and responsibilities of all parties.

## Chapter 9: Monitoring

A monitoring plan is designed to provide land managers with a framework to determine whether the goals and objectives of the plan are being met. The following indicators and monitoring strategies were gathered through input from the recreation planning group in November 2017, and refined by land management representatives and County and NPS staff in 2018. These indicators and monitoring strategies provide suggestions for how a monitoring strategy could be implemented to determine the success of the plan and identify adaptive management needs and future plan revisions/additions.

### *Potential indicators related to key issues and opportunities*

Indicators translate desired conditions into measurable attributes (i.e. number of user-created trails) that could be tracked over time to evaluate changes in resource or experiential conditions. Along with input from the recreation committee, the planning team used the key issues and opportunities for the plan to develop related indicators. This process helped identify when management action may be needed given the importance of the resource or visitor experience affected by types of recreation.

Thresholds represent the minimum acceptable condition for each indicator and will be established by considering descriptions of the desired conditions, data on existing conditions, staff and committee management experience, and knowledge on public preferences. Although defined as “minimally acceptable,” thresholds still represent acceptable conditions. Also, establishing thresholds does not imply that no action would be taken prior to reaching the threshold. Thresholds identify when conditions approach unacceptable levels, so threshold serve as warning lights letting managers, user groups, and the public know that corrective action will keep conditions acceptable, ultimately allowing goals to be met and tracked over time.

For some indicators, objectives were set, meaning a specific result that the agencies and user groups aim to achieve within a specified time frame. If thresholds serve as “warning lights” to indicate when conditions are about to become unacceptable, objectives may be established to demonstrate positive progress towards achieving desired conditions. Another distinction between objectives and thresholds is that objectives contain some action that is typically within the control of the agencies/landowners, while thresholds are dependent upon conditions that result from the effects of visitor use. In practice, objectives are typically stated as managerial performance or accomplishment goals, whereas thresholds are typically based on physical, biological, or social resource conditions.

Indicators, thresholds, objectives, and associated management strategies, could be implemented as a result of this planning effort and are described below. The planning team arrived at the following five indicator topics that would translate the desired conditions into measurable attributes that could be tracked over time:

- Areas for traditional recreational uses
- Non-motorized recreation opportunities
- Use conflicts/illegal activities
- Effectiveness of green dot road system
- Preservation of contiguous habitat areas

Visitor use management is an iterative process in which management decisions are continuously informed and improved. Indicators are monitored, and adjustments are made as appropriate. As monitoring of conditions continues, managers may decide to modify or add indicators if better ways are found to measure important changes in resource and experiential conditions. Monitoring indicators helps determine the most effective way to manage visitor use to attain desired visitor experiences and resource conditions. The following monitoring framework provides some options for using suggested indicators to track the success of the plan in addressing the original issues and opportunities.

### ***Monitoring Framework***

**Key Issue/Opportunity:** Continue to provide opportunities for traditional uses such as hunting, fishing, and snowmobiling.



<p><b>Potential indicators:</b></p> <ul style="list-style-type: none"> <li>• Number of miles of green dot roads to access fishing and hunting</li> <li>• Number of vehicle and trailer parking spots to access snowmobile trails</li> <li>• Number of miles of groomed snowmobile trails</li> </ul> <p><b>Indicator rationale:</b> These indicators are related to visitor experiences. The indicators can track trends in the access for opportunities for fishing, snowmobiling and hunting within the basin.</p>
<p><b>Potential objective:</b> Over the lifespan of the plan, agencies will work with user groups to provide at least 16.6 miles of green dot roads to access fishing and hunting in the basin (but not more than is suitable for wildlife and maintenance needs), an adequate number of vehicle and trailer parking spots to access snowmobile trails, and maintain the current extent of groomed snowmobile trails.</p>
<p><b>Applicable analysis areas:</b> Zone 1 and Zone 3</p>
<p><b>Suite of management strategies:</b> different strategies would be chosen at each location, and may vary depending on context such as zoning.</p> <ul style="list-style-type: none"> <li>• Evaluate</li> <li>• Educate other users on the importance of traditional uses and importance of resource protection to the Stemilt community</li> <li>• Maintain current areas and/or the same amount and quality of areas for these user groups</li> <li>• Provide parking by maintaining existing areas for these uses. Assess alternative locations for parking if current access is closed, and build new parking areas to support these uses if appropriate. Assist Apple Country Snowmobile Club in maintaining legal sno-park status if any changes in location are made.</li> <li>• Designate new areas for fishing, snowmobiling, and hunting</li> </ul>
<p><b>Monitoring Approach:</b></p> <ul style="list-style-type: none"> <li>• DNR tracks the number of green dot roads on state lands. Chelan County can track this for County lands during fishing and hunting seasons within the planning area.</li> <li>• May need to address seasonal closures and track differently than how it is currently tracked.</li> <li>• Apple Country Snowmobile Club may help with baseline and monitoring of snowmobile parking and trails.</li> </ul>

<p><b>Key Issue/Opportunity:</b> Create desired new types of non-motorized recreation opportunities.</p>
<p><b>Potential indicators:</b></p> <ul style="list-style-type: none"> <li>• Total number of trail miles available to summer non-motorized recreation</li> <li>• Total number of designated winter routes available to non-motorized recreation</li> </ul>

<p><b>Indicator Rationale:</b> These indicators are related to visitor experience and safety. Visitors that engage in non-motorized recreation activities within the basin have repeatedly requested separate opportunities to enhance safety and enjoyment, due to conflict. These indicators can track agency and user group progress toward the objectives.</p>
<p><b>Potential objective and rationale:</b> Over the lifespan of the plan, agencies will work with user groups to provide at least one new separate trail for summer non-motorized recreation within the basin, delineate at least three separate new designated routes for non-motorized winter recreation (one of each fat-tire bike, snowshoe, and cross country ski routes) within the basin.</p>
<p><b>Applicable analysis areas:</b> Western portion of the planning area, with access points from Squilchuck road, and some access points from Upper Wheeler and Orr Creek Road</p>
<p><b>Suite of management strategies:</b> different strategies would be chosen at each location, and may vary depending on context such as zoning.</p> <ul style="list-style-type: none"> <li>• Evaluate</li> <li>• Educate visitors about the importance of multiple uses</li> <li>• Provide directional signs and signs encouraging visitors to stay on trail (as appropriate)</li> <li>• Maintain current routes and trails</li> <li>• Improve current route/trail</li> <li>• Formalize user-created trails as designated trails, if appropriate</li> <li>• Establish and build new routes/trails based on best management practices for trails sustainability. Agencies may consider the <a href="#">USFS Trail Fundamentals &amp; Trail Management Objectives</a>, though not required.</li> <li>• Assess for potential connectivity of the trail system.</li> <li>• Establish different types of winter routes for different types of uses (i.e. fat tire bike, snowshoe, cross-country skiing), all as part of total number of designated winter routes available.</li> </ul>
<p><b>Monitoring approach:</b></p> <ul style="list-style-type: none"> <li>• User groups will be important for establishing, building, and maintaining sustainable routes/trails, as well as tracking mileage of what is available (El Sendero, Evergreen Mountain Bike Alliance, and Wenatchee Outdoors are examples of user groups that can both help establish these opportunities and help track the length of new non-motorized routes).</li> </ul>

**Key issue/opportunity:** Potential conflicts/illegal activities.

**Key issues/opportunity:** Lack of agency resources to conduct adequate backcountry enforcement of illegal recreation uses.

<p><b>Potential indicators:</b></p> <ul style="list-style-type: none"> <li>• Unendorsed activity</li> </ul> <p><b>Indicator rationale:</b></p> <p>This indicator is related to visitor experience and resource conditions. Unendorsed behaviors can become a primary safety concern for visitors, residents and LE staff (e.g. campfires during fire bans, drinking while driving, trespassing). Unendorsed activities also impact resources (e.g. dumping, poaching, mudding, wood cutting, not adhering to fishing regulations).</p>
<p><b>Potential objective:</b></p> <p>No net increase in number of calls related to illegal/unendorsed activity, with 2018 law enforcement activity as a baseline.</p> <p>This objective is based on the availability of law enforcement to patrol/respond to incidents in the basin. Increased law enforcement presence may initially result in an increase of citations/documentated violations, therefore this indicator should be tracked by documenting the amount of time law enforcement was present in the area, rather than by the number of citations issued.</p>
<p><b>Applicable analysis areas:</b></p> <p>Zone 1 and 2</p>
<p><b>Suite of management strategies:</b> The most effective management strategies would be chosen for each location, and may vary on context such as zoning:</p> <ul style="list-style-type: none"> <li>• Evaluate possibilities of a dedicated law enforcement presence, through grant funding or agency designation</li> <li>• Law enforcement emphasis patrols oriented towards educating.</li> <li>• Add additional signage delineating private property lines</li> <li>• Educating the public via social media and partnering with user groups</li> <li>• Partner with user groups on clean-ups and stewardship activities.</li> <li>• Establish trail watch/stewards volunteers program. Volunteers would participate in a training class to report on observed law violations.</li> </ul>
<p><b>Monitoring Approach:</b></p> <ul style="list-style-type: none"> <li>• Track time spent by law enforcement personnel in the planning area.</li> </ul>

<p><b>Key issue/opportunity:</b> Unlawful motorized use of non-green dot road system due to the lack of information and enforcement.</p>
<p><b>Potential indicator:</b></p> <ul style="list-style-type: none"> <li>• Number non-green dot roads with gates/barriers/signs installed or roads decommissioned</li> </ul> <p><b>Indicator Rationale:</b> This indicator is related to both resource impacts and visitor experiences. As recreation users leave designated roads, wildlife is impacted, vegetation and soil loss can</p>

<p>occur, deep ruts can form, and some user created roads trespass on private land. Recreationists may be leaving designated roads for a variety of reasons such as wanting to reach a destination off of the designated roads, they may not know what is designated or undesignated, or avoid undesirable road conditions. Issues of concern related to this indicator include natural resource impacts such as those described above, trespassing, and recreationist safety.</p>
<p><b>Objective and rationale:</b></p> <p>Over the lifespan of the plan, agencies will work with partners towards the objective and to achieve visitor experience and resource protection goals.</p> <p>At least 2 non-green dot roads closed with a barrier, signed, or decommissioned per year, with all road closure proposals reviewed by the Stemilt Roads Committee.</p>
<p><b>Applicable analysis areas:</b></p> <p>All zones.</p>
<p><b>Suite of management strategies:</b> The most effective management strategies would be chosen at each location, and may vary depending on context such as zoning. (then list management strategies from least to most stringent)</p> <ul style="list-style-type: none"> <li>• Evaluate</li> <li>• Complete road inventory and assessment, and focus closures on priority roads that are causing the greatest impact to wildlife/natural resources.</li> <li>• Educate motorists about the importance of staying on designated roads including use of social media</li> <li>• Eradicate excess roads</li> <li>• Provide informational signs and signs encouraging motorists to stay on designated roads</li> <li>• Improve roads</li> <li>• Relocate and or redesign roads to address resource issues related to green dot roads</li> <li>• Construct Barriers (fences, etc.)</li> <li>• Prioritize road closures and monitoring based on related resource impacts</li> </ul>
<p><b>Monitoring approach:</b></p> <ul style="list-style-type: none"> <li>• Track closures of non-green dot road implemented</li> <li>• Track usage of non-green dot roads with traffic counters (WDFW)</li> </ul>

<b>Key issue/opportunity:</b> Impacts of current and future recreation use on wildlife, water, and natural resources.
<b>Potential indicators:</b> <ul style="list-style-type: none"> <li>• Size of contiguous areas 500' from green dot roads and trails</li> <li>• Buffers around wetland/riparian areas maintained</li> </ul>
<b>Indicator rationale:</b> <p>This indicator is related to resource protection and visitor experience. As visitors leave designated roads, vegetation, soil loss, and wildlife flushing can occur. Areas of contiguous habitat are important for wildlife within the basin as well as for water quality. Undeveloped areas are also important for those visitors who travel by foot and seek opportunities for solitude and exploration. The 500' indicator was chosen simply as an indicator of undeveloped lands, and does not reflect true wildlife impact buffers. The contiguous size of polygons of undisturbed area provides the indicator of quality habitat that is not 'sliced and diced' by recreation routes.</p> <p>To measure areas, these can first be determined and then measured in GIS. A similar method could be used for assessing the riparian buffers and intersections with roads and trails to more specifically address rivers/water protection.</p>
<b>Threshold and rationale:</b> <p>Maintain contiguous undeveloped habitat polygons in critical habitat areas, with a minimum of 3 polygons that increase in size over the planning period by reducing impacts of non-sanctioned routes (non-green dot roads or user-made trails).</p>
<b>Applicable analysis areas:</b> Entire basin, with particular emphasis on contiguous habitat area in Zone 3.
<b>Suite of management strategies:</b> <ul style="list-style-type: none"> <li>• Evaluate</li> <li>• Re-route existing recreation routes around sensitive areas</li> <li>• Plan trails and roads to avoid bisecting large contiguous undisturbed areas</li> <li>• Restore impacts to sensitive riparian areas</li> </ul>
<b>Monitoring approach:</b> <ul style="list-style-type: none"> <li>• Re-measure every five years throughout the basin to see if size of contiguous areas 500' from green dot roads and trails has increased, decreased, or remained constant</li> <li>• Identify 3 priority areas to increase size of contiguous undisturbed area</li> </ul>

In addition to the potential indicators outlined above, the recommendations specifically call out the monitoring of dispersed campsites for impacts that indicate additional management needs. Dispersed campsites in the basin currently have no facilities, but if impacts exceed levels that verge on public safety, sanitation problems, or



resource damage, this plan recommends considering installation of metal fire rings, pit toilets (wallowa style, as can accommodate 'backcountry style' use levels), and borders to reduce wildfire risk, contain human waste, and prevent spread of impacts. These campsites can be monitored by agency personnel or volunteer recreational users reporting on site conditions. Visible signs of fires that have escaped fire rings, toilet paper and/or human waste, and expanding footprint of sites and associated vegetation damage will indicate the need for potential additions to dispersed campsites.

This plan emphasizes a phased approach, with some elements only occurring as needed and determined by use/impact levels. This approach is a way to anticipate future uses and provide guidance for managing recreational pressure that may increase over time in this area. The monitoring component provides a way to ensure the values of the community that were identified during this planning process are still being met within the planning area. Utilizing this monitoring component throughout the planning period will help determine adaptive management needs and provide data that can be used in future plan updates.

## Appendix A:

### Stemilt-Squilchuck Recreation Committee Charter

**Vision:** Establish sustainable recreation opportunities in the Stemilt-Squilchuck Basin through a community based planning process that embraces community values, protection of water and wildlife resources, and collaboration with all stakeholders.

#### Lead Agency

Chelan County Natural Resources Department is the lead agency coordinating the recreation planning process.

*Technical Assistance:* The National Park Service's Rivers, Trails, and Conservation Assistance Program is providing technical assistance to Chelan County and its partners.

**Recreation Committee Role:** The recreation committee has been formed to help guide and advise Chelan County, Stemilt Partnership, and land managers on the development of the Stemilt-Squilchuck Recreation Plan. The role of the recreation committee is to represent the community and its varied interests groups during the planning process. The recreation committee members will have the opportunity to participate in and provide input throughout the planning process prior to a broader public review.

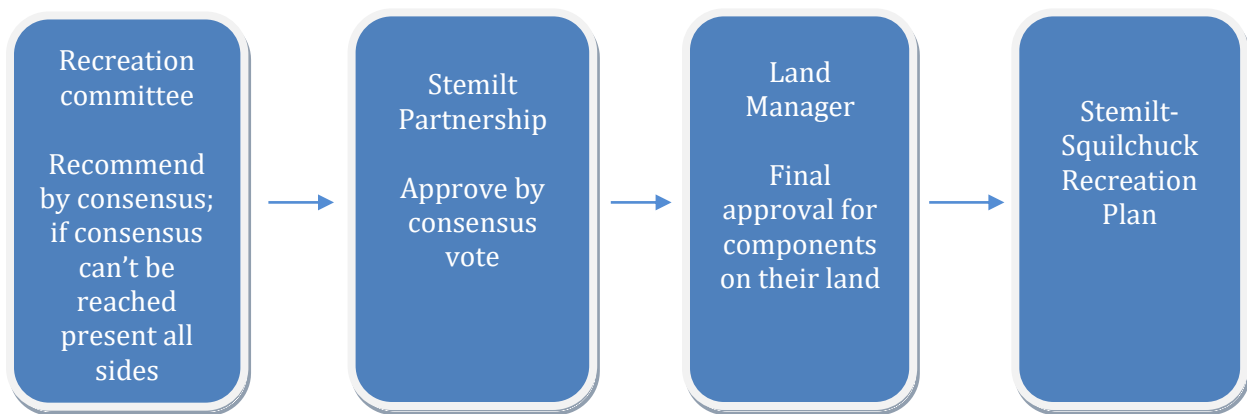
The recreation committee's responsibilities are:

- Attend approximately 5 to 7 meetings (3 hours each) over the next 15-18 months (Spring 2017 to Summer/Fall 2018) These meetings will be to review and comment on draft information and to participate in discussions and brainstorming session designed to incorporate their thinking into the process. In addition, it is likely that two or more public events will occur during the planning process with which committee members will be invited to participate in.
- Provide support, expertise, and direction on all elements of the planning process from start to finish (i.e. outreach strategy, desired conditions, recreation and resource inventory, recreation plan concepts, draft plan, monitoring strategy). Committee members will participate fully in the process and share their ideas and concerns early and often. Committee members will seek to work collaboratively with other members to reach consensus.
- Serve as a liaison to their respective agency, nonprofit group, recreation user group, partnership team, or company. As a liaison, the committee member will bring input into the process from their larger constituency group as well as share the results of the recreation planning process with their recreation user group, partnership group, agency leadership, or company leadership. This is critical role and vital to the success of the plan.

#### Decision-making Process:

- The recreation committee will make recommendations to the Stemilt Partnership.

- The recreation committee will seek to make decisions by consensus, if consensus can't be reached by all, then they would first seek to modify the proposals to reach consensus. If consensus could still not be reached, the recreation committee would describe the different perspectives and present this to the Stemilt Partnership.
- The Stemilt Partnership will consider this input and working by consensus vote as described in their operating procedures will make final recommendations to the designated land manager/owner.
- The ultimate decision lies with the land manager. Any recommendations approved by the land manager would be incorporated into the plan.



### Consensus:

All members must support a decision for it to carry. A decision reached by consensus can sometimes represent a wide a range of support. When useful, a simple rating system will be used to help committee members individually and collectively evaluate where they stand in their consensus-based decisions.

1. Support (Consensus)
2. I can live with the decision and accept it, even though it may not be exactly what I want. (Consensus)
3. Cannot support (No Consensus)

### Committee Membership

The recreation committee membership is listed below. The committee will strive to include one (or two) representative(s) from each of the recreation user groups who either use the area or have the potential to use the area. Members are encouraged to actively participate in the process (see role and responsibilities above).

### Active Membership

Organization	Representative
Chamber of Commerce	Matt Kearny, Patrick Nolan, Kari Johnson
Evergreen Mountain Bike	Travis Hornby
El Sendero Backcountry Ski and Snowshoe	Gus Bekker, Andy Dappen, Chester Marler
Wenatchee Valley Fly Fishers	Bruce Merighi
Wenatchee Sportsmen	Jerry Gutzwiler, Dave Gimlin
Apple Valley Snowmobile Club	Jim Burts, Tom Hendrickson, Gene Reed
Wenatchee Outdoors	Sarah Schafer
Wenatchee Valley Ridge Runners ATV	Donna Germain
Chelan-Douglas Land Trust	Mickey Fleming
Backcountry Horsemen	Ken Bailey
Wenatchee Valley College	Ariahna Jones
Our Valley Our Future	Steve Maher
Chelan County Natural Resource Department	Erin McKay and Mike Kaputa
Washington Department of Fish and Wildlife	Pete Lopushinsky, William Moore
Wildlife Specialist	John Lehmkuhl
Stemilt Growers	Ben Alworth
Washington State Parks	Brian Patnode
Mission Ridge	Josh Jorgensen
Washington Department of Natural Resources	Larry Leach
Stemilt Partnership Steering Committee	Jerry Gutzwiler, Herb Troxel, James W. Wiggs
Wenatchee Heights Irrigation District	James (Will) Wiggs
Stemilt Irrigation District	Kevin Juchmes
Chelan County Commissioner	Kevin Overbay
Washington Trails Association	Cody Gillin
Residents of the Stemilt-Squilchuck Basin	Cindy Uren
United States Forest Service	Mason Schur

### Potential Membership

Other community members may be interested in participating in the future. Any potential new members should reach out to Chelan County. Chelan County seeks to create an open and transparent planning process and will grant new memberships when feasible. New members will need to be able to review relevant information regarding the progress made in the planning process so they can engage effectively.

**Observer Guidelines.** Anyone from the public is welcome to observe the recreation committee meetings. Any observer wanting to make comments can let Chelan County know ahead of time and they will be incorporated into the agenda for the meeting.

Observers interested in joining the committee can work with Chelan County as described above.

**Public Input/Outreach.** In addition to the recreation committee members, Chelan County and its partners will be reaching out to the other interested and potentially affected community members and funders at key times in the planning process to share information and gather input. Outreach methods may include e-newsletter articles, website updates, press releases, open houses, and surveys.



## Appendix B:

## Concept Drawings

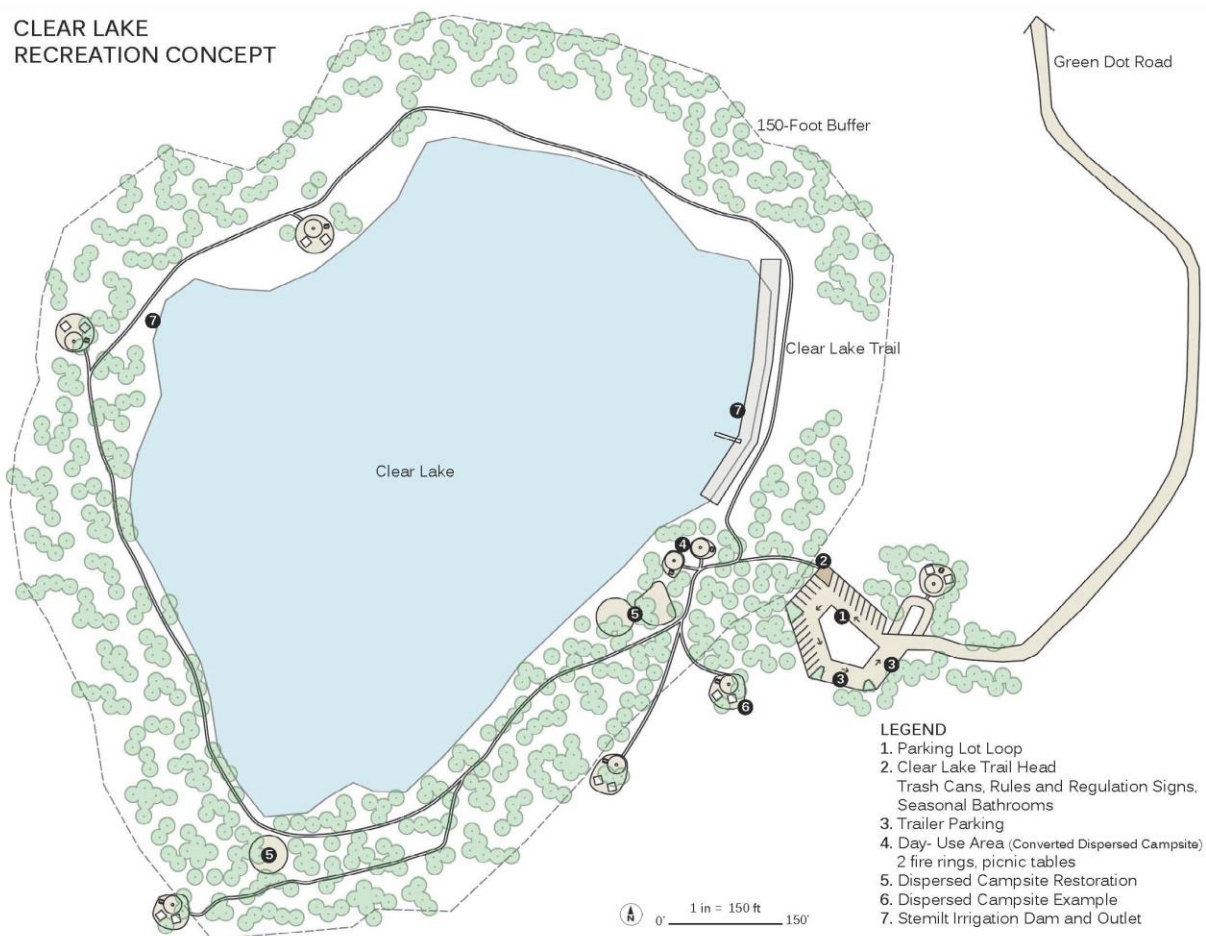


Figure 11. Clear Lake Draft Design Drawing

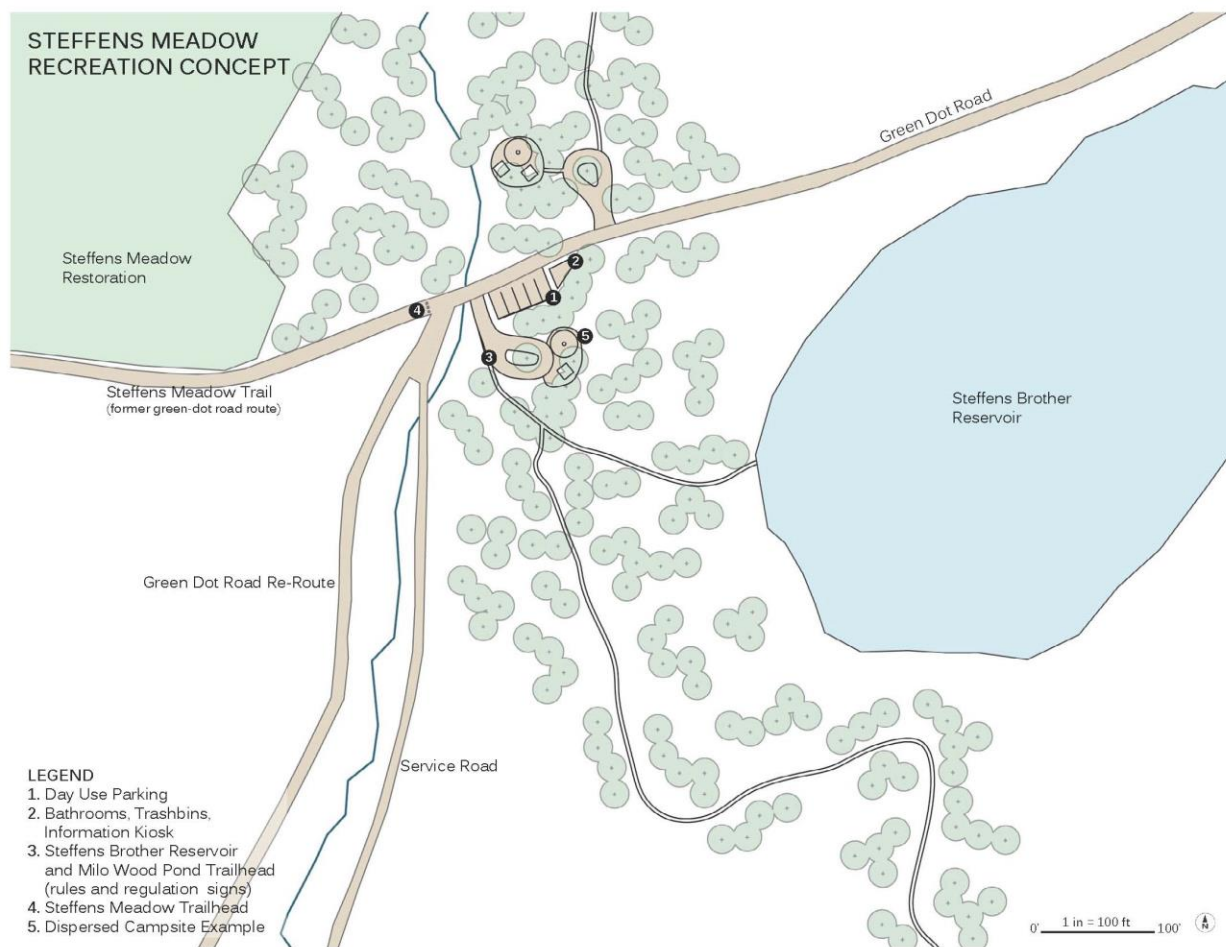


Figure 12: Steffen's Meadow Draft Design Drawing

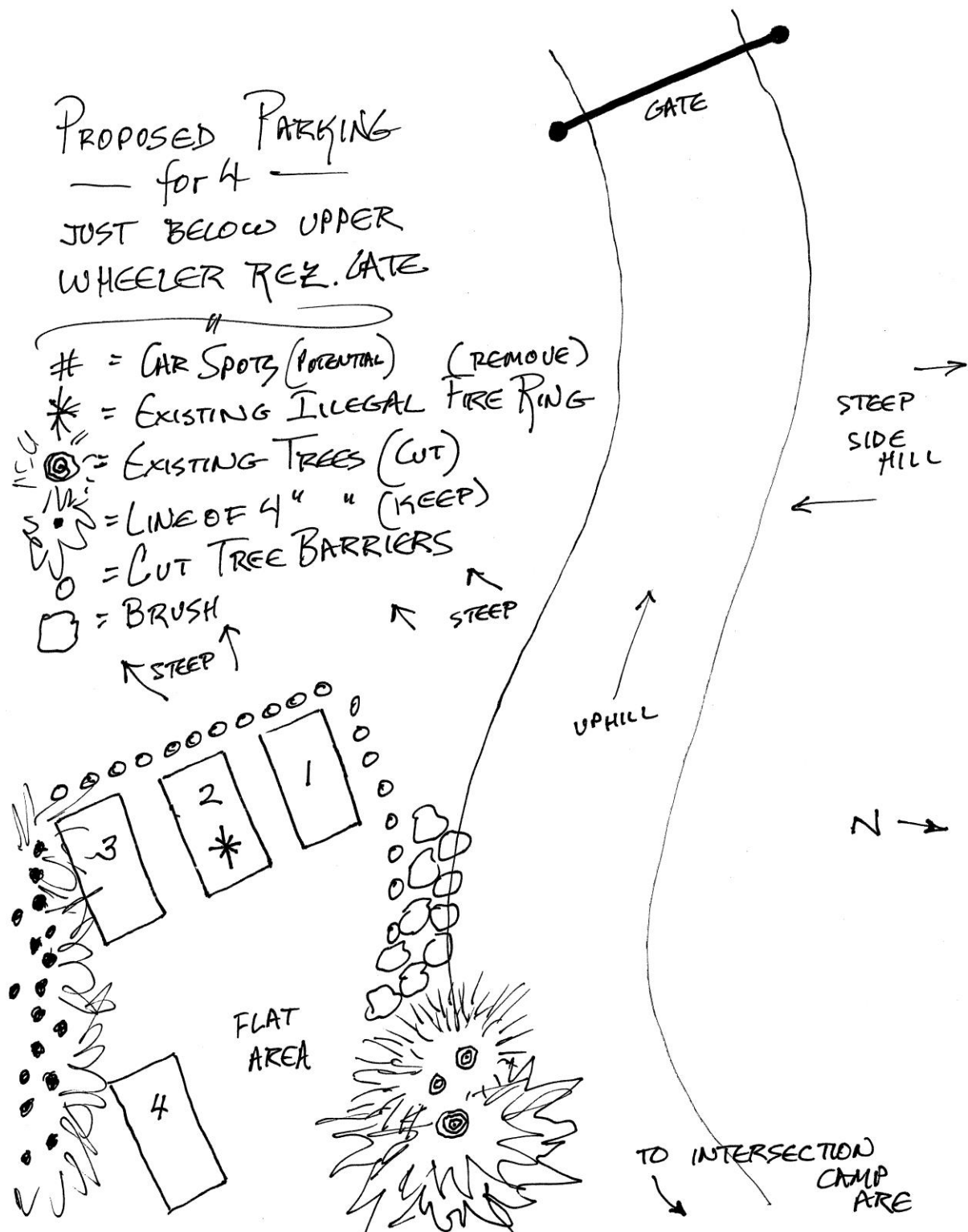


Figure 13. Upper Wheeler Reservoir Access Draft Design Drawing

## Appendix C: Public Comment Response

Approximately 220 public comments were received during the 90 day comment period from March 21- June 18, 2018. Verbal comments were also captured at the March 21 2018 Open House in Malaga. A SEPA comment period was held from April 19-May 3, 2019, and an addition comment period was open through the second public hearing occurring June 4, 2019. Comments were compiled and are on record with Chelan County Natural Resource Department (see below for website). Comments were submitted by members of the public and local businesses, as well as the following organizations:

- Wenatchee Sportsmen's Association
- El Sendero Backcountry Ski and Snowshoe Club
- Washington Trails Association
- State of Washington House of Representatives Cary Condotta's Office
- Evergreen Mountain Bike Alliance
- Forest Ridge Subdivision
- Conservation Northwest
- Washington Wild
- Wenatchee Outdoors
- The Wilderness Society
- Wildwater River Guides
- Sierra Club
- North Cascades Conservation Council
- Alpine Lakes Protection Society
- Winter Wildlands Alliance
- North Central Washington Audubon Society
- Washington Outdoor Alliance
- Chelan-Douglas Land Trust

Comments were grouped into comment type and responses to comment by subject are as follows. The comprehensive table of comments can be viewed on the Chelan County Natural Resources Stemilt Partnership website here: <http://www.co.chelan.wa.us/natural-resources/pages/recreation-planning-documents-and-maps>.

While the majority of public comments were regarding winter recreation proposals, all comments were considered equally and were weighed carefully when revising the plan recommendations. Variations of the draft recommendations with track changes and WDFW input can be viewed on the website above and show several rounds of revisions to the recommendations. Appendix E of this document provides a detailed account of the revisions to the winter recreation proposal.

Comment	Response
Comments <i>in opposition to a non-motorized winter recreation area</i> . Strong sentiment from	In response to concerns from the motorized community about a potential reduction in

<p>the motorized community that</p> <ul style="list-style-type: none"> <li>• motorized areas are already limited and are becoming more limited with new travel restrictions</li> <li>• non-motorized users are not restricted from any area, and there is plenty of wilderness in this area for non-motorized experience</li> <li>• the area within the March 2018 proposal encompasses the highest quality snow and terrain in the basin</li> <li>• there is currently no issue with sharing the area with motorized and non-motorized</li> <li>• snowmobile use is very established in this area but not many skier/snowshoers use it</li> <li>• these are public lands that should be open to all uses</li> <li>• the proposal supported by Apple Country Snowmobile Club should be adopted by the County and agencies</li> <li>• noise ordinance for snow machines could help resolve some conflict between motorized and non-motorized user groups</li> </ul>	<p>ridable area, additional representatives from the motorized community joined the planning group and presented a counter-proposal that reduced the size of the proposed non-motorized area but still included the non-motorized opportunities outlined in the Naneum Plan. A subgroup containing equal representation of motorized and non-motorized users, with observation from land managers, worked on refining the boundaries in a way both groups agreed on. This process is detailed in Appendix E of this plan. The compromise proposal is supported by representatives of Apple Country Snowmobile Club, and is reflected in the revised Winter Recommendations map.</p> <p>In addition, the recommendations include ensuring adequate parking for snowmobile access to the planning area as a high priority action that Chelan County is willing to assist Apple Country Snowmobile Club with.</p>
<p>Comments <b><i>in support of a non-motorized winter recreation area.</i></b> Strong sentiment from the non-motorized community that</p> <ul style="list-style-type: none"> <li>• the proposed area is reasonable and equitable in the big picture</li> <li>• motorized and non-motorized recreation cannot co-exist in the same place because motorized activity is highly impactful on the experience and safety of non-motorized users</li> <li>• a balanced approach to recreation should be implemented in the basin</li> <li>• there is no designated non-motorized winter area on state lands in Washington and this reflects an imbalance in recreational management</li> <li>• there cannot be a motorized route crossing through a non-motorized area</li> <li>• the 2015 Naneum Plan, formally adopted by WDFW and DNR, calls for non-motorized winter recreation opportunity</li> </ul>	<p>While the proposal for a non-motorized area evolved over the planning process as mentioned above and in Appendix E, the plan does include a recommendation for a non-motorized winter use area. The agencies have expressed that the proposal contained in the plan meets the goals of the Naneum Plan, and both motorized and non-motorized representatives have agreed on the compromise proposal.</p> <p>Recommendations include a non-motorized winter use area, signage and trails for snowshoeing, cross-country skiing, and fat-tire biking, and non-motorized snow-parks.</p>
<p>Comments in support of allowing ATV use in the</p>	<p>The recommendations were revised to negate</p>



planning area and not closing green dot roads for vehicle access	the need to close green dot roads for any reason other than resource protection.
Comments in support of opening a green dot connector road between Orr Creek and Upper Wheeler Road	The green dot road connector is supported as long as the end of Upper Wheeler road (from where the connector road branches off to the end of the current County Road) can be gated to reduce resource impacts in the Upper Wheeler Reservoir area.
Comment in support of addressing parking issues for ATVs and snowmobiles at the base of Jump-off Road	The motorized representatives from the planning group are aware of this issue and while a solution is not included in this plan, motorized groups will work with landowners to assess options for vehicle parking near Jump-off Road
Comment in support of 'light-handed' management and not spending tax-payer dollars to develop recreation opportunity in the Stemilt basin	This approach is discussed in the Alternatives section of the plan.
Comments in support of wildlife protection measures such as <ul style="list-style-type: none"> <li>• maintain large contiguous areas of habitat, free from road or recreation impacts</li> <li>• implement seasonal closures on new routes</li> <li>• close Pole Flats road to motorized use</li> <li>• completing a comprehensive road inventory and habitat assessment</li> <li>• closing non-green dot roads to vehicle use</li> </ul>	The Wildlife Considerations chapter discusses WDFW input recommendations based around wildlife protection. The Alternatives section also discusses a wildlife protection-based approach. The Monitoring section addresses the goal of protecting large contiguous areas of habitat and how this indicator can be measured. Although the public input determined that closing Pole Flats road would be an unacceptable impact on motorized recreation, all of the other comments listed here are directly addressed in the recommendations. The recommendation to close Pole Flats road was revised to consideration of a seasonal closure of Pole Flats road, open for hunting season.
Comments on concerns for wildfire, including <ul style="list-style-type: none"> <li>• metal fire rings with lids should be installed at campsites</li> <li>• need to be able to close roads during high fire danger</li> <li>• should focus on fuels reduction efforts</li> </ul>	The recommendations were revised to include more wording on education and response related to wildfire. While not addressed in this plan, there is a large-scale fuels reduction effort currently ongoing across ownerships in the Stemilt-Squilchuck upper watershed.
Comments on the need for more enforcement, including <ul style="list-style-type: none"> <li>• don't spend money developing new recreation facilities until you can enforce what already exists</li> <li>• more enforcement needed to regulate green dot road usage, illegal dumping, etc.</li> </ul>	This is recognized as a critical part of the recreation plan, and is reflected in the recommendations. While the plan does not obligate agencies to increase law enforcement presence, collaborative efforts are underway to find funding sources to support increased law enforcement in the basin.

Request to show the north/south non-motorized trail on the summer recommendations map	The exact location of the North-South trail is unknown, and needs further analysis to be determined. However, this plan recommends that it occur in Zone 2, starting from Squilchuck State Park and potentially crossing Mission Ridge property and passing through Mission Ridge permit area enroute to Naneum Ridge. This general area is called out for the trail location on the Summer Recommendations map.
Request to mention fat-tire biking as a non-motorized winter use included in the trail system	Wording on fat-tire biking was added to the winter recommendations.
Request to take out “wilderness feel” wording for Zone 3, it is misleading	The “wilderness feel” wording was removed from Zone 3 description.
Request to include summer non-motorized use for the recreation hut proposed on Naneum Ridge	Wording to assess feasibility of summer non-motorized use for the recreation hut proposed on Naneum Ridge was added.
Request to clarify which trails/routes would be subject to seasonal closures for wildlife, and how this will be communicated to the public	Wording to clarify seasonal closure alerts was added to the recommendations.

## Appendix D: Potential Grant Funding Sources

- RCO Recreation and Conservation Office Recreation Grant Programs
  - NOVA
  - WWRP
  - RTP
- North Central Washington Community Foundation Regional Impact Grant
- Wenatchee Sportsman Association
- Rocky Mountain Elk Foundation
- WA State Parks Winter Recreation Program

## Appendix E: Winter Recreation Proposal Evolution

### *Non-Motorized Winter Recreation Proposal Process*

The recommendation for non-motorized winter recreational opportunity in the planning area was the subject of the majority of public comment and a topic of great importance for residents and recreationalists of the Wenatchee valley and surrounding areas. Due to the broad spectrum of public opinion and the planning parameters that the recreation committee worked within, the non-motorized winter recreation subject required

significant effort and coordination among a diverse stakeholder group. To provide transparency to the public and clarity to the entities evaluating this plan, the steps taken to arrive at the proposal(s) included in this plan are outlined below.

The non-motorized winter recreation proposal originated with the 2015 DNR and WDFW Naneum Ridge to Columbia River Recreation and Access Plan. The Naneum Plan includes the concept map shown below and the following Objectives and Strategies for winter recreation in the Stemilt basin:

Figure 6. Recreational Use Concept Map – Winter

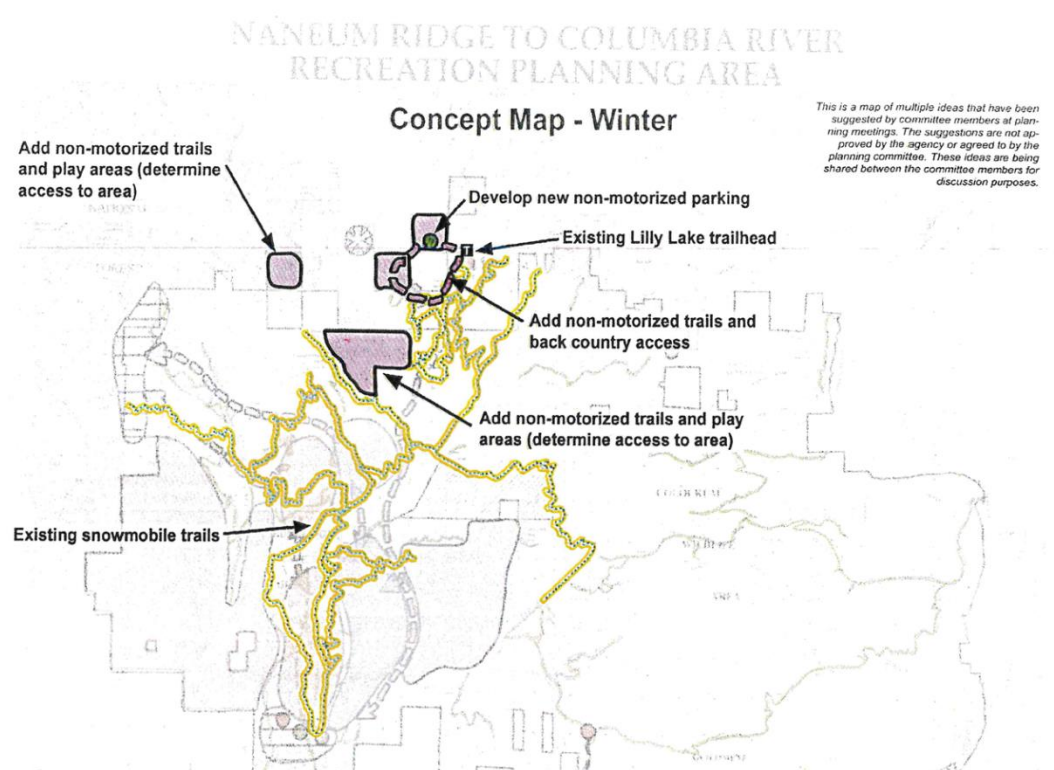


Figure 14. Naneum Plan Winter Concept Map

Objective F: Provide a non-motorized winter trail system.

#### Strategies

1. Partner with the public to identify trail location options within the area identified on the Concept Map-Winter.
2. Plan, design, and develop winter non-motorized trails.

3. Provide non-motorized winter access at Clara Lake and additional areas shown on the Concept Map-Winter.
4. Coordinate the design of the non-motorized winter trails and play areas with input from non-motorized users and the snowmobile community.

Objective G: Continue to provide winter motorized recreation in the Recreation Planning Area.

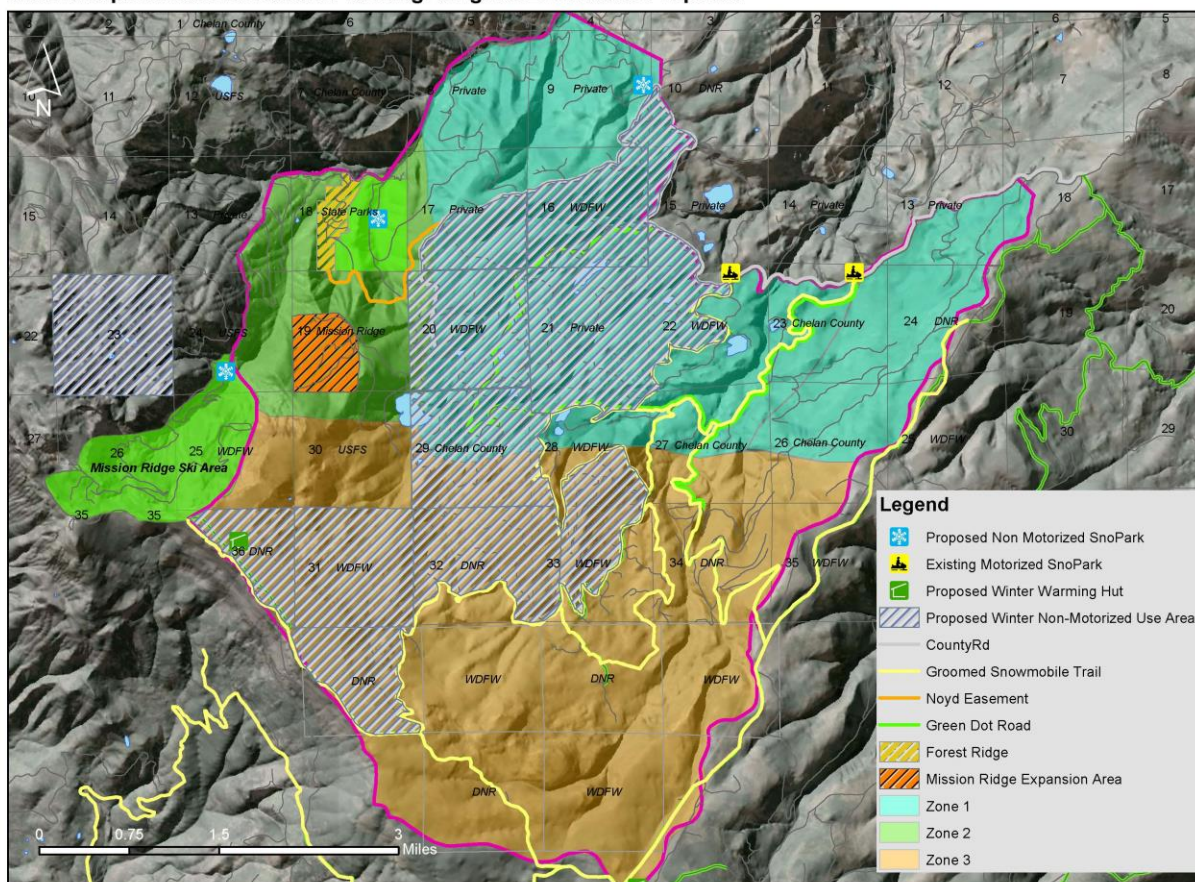
### Strategies

1. Continue existing agreement with Washington State Parks to maintain existing snowmobile trails in the Recreation Planning Area.
2. Maintain winter snowmobile trails in the Recreation Planning Area.
3. Continue to enforce existing snowmobile winter restrictions east of the Colockum Pass Road and in the West Bar area.

Having adopted the Naneum Plan, WDFW and DNR are both committed to following through with the objectives and strategies outlined in the plan. However, the concepts as shown in the Naneum Plan were drawn from the 30,000ft level, and further planning by a group of local stakeholders was needed to identify the specific areas and boundaries that would provide the opportunities mandated by the Naneum Plan in a way that made sense on the ground. Several members of the Stemilt-Squilchuck recreation committee were involved in the Naneum planning process, and provided the Stemilt-Squilchuck group with background on the origin of the Naneum concept. In addition, agency staff involved in the Naneum Plan were able to provide insight to the Stemilt-Squilchuck group on the intent of the Naneum Plan objectives and strategies.

The Stemilt-Squilchuck recreation committee picked up where the Naneum Plan left off, by including the non-motorized winter recreation concept in the list of initial concepts. The non-motorized winter recreation proposal was presented as a non-motorized use area mapped by El Sendero Backcountry Ski and Snowshoe Club representatives. The proposal, using a delineated area as way to provide non-motorized winter recreation experience rather than the trails and play areas outlined in the Naneum Plan Strategy, used the groomed snowmobile trail system as the eastern boundary and encompassed the play areas shown on the Naneum concept map and additional areas to the west of the groomed snowmobile trail system, Section 29, and some portions of private property. This proposal was discussed by the planning group, which included members from the Apple County Snowmobile Club, and the proposed boundary of the area was not disputed within the group at this stage. The original proposed non-motorized area is shown on the map below.

## Stemilt-Squilchuck Recreation Planning: Original El Sendero Proposal



Notes: See Recommendations Document for complete outline of recreation concepts. All proposals on or crossing private land will require permission from property owners. Chelan County, GIS 2018, ACSC, El Sendero.

Figure 15. El Sendero Original Winter Proposal Map

This map was shared in an initial public outreach effort in December 2017, via an emailed survey to the Stemilt Partnership and local residents. 47 responses were received from this survey, and concern was expressed about the size and coverage of the non-motorized area proposal. One concern heard from several citizens was that the proposed non-motorized area completely surrounded a section of private property, essentially 'landlocking' this section from motorized winter access. Other concerns were heard that the proposed area encompassed some well-established and highly valued off-trail snowmobile riding areas. At the November 2017 planning meeting, in response to these concerns, the boundary was shifted away from the privately owned Section 21 in the lower basin. A portion of the upper basin that was surrounded by groomed snowmobile trail was also removed from the area. However, the proponents of the original proposal were not willing to shift the boundary in the highest elevation parts of the basin. The revised map incorporating these changes is as follows.



## Stemilt-Squilckuck Recreation Planning: Winter Recommendations

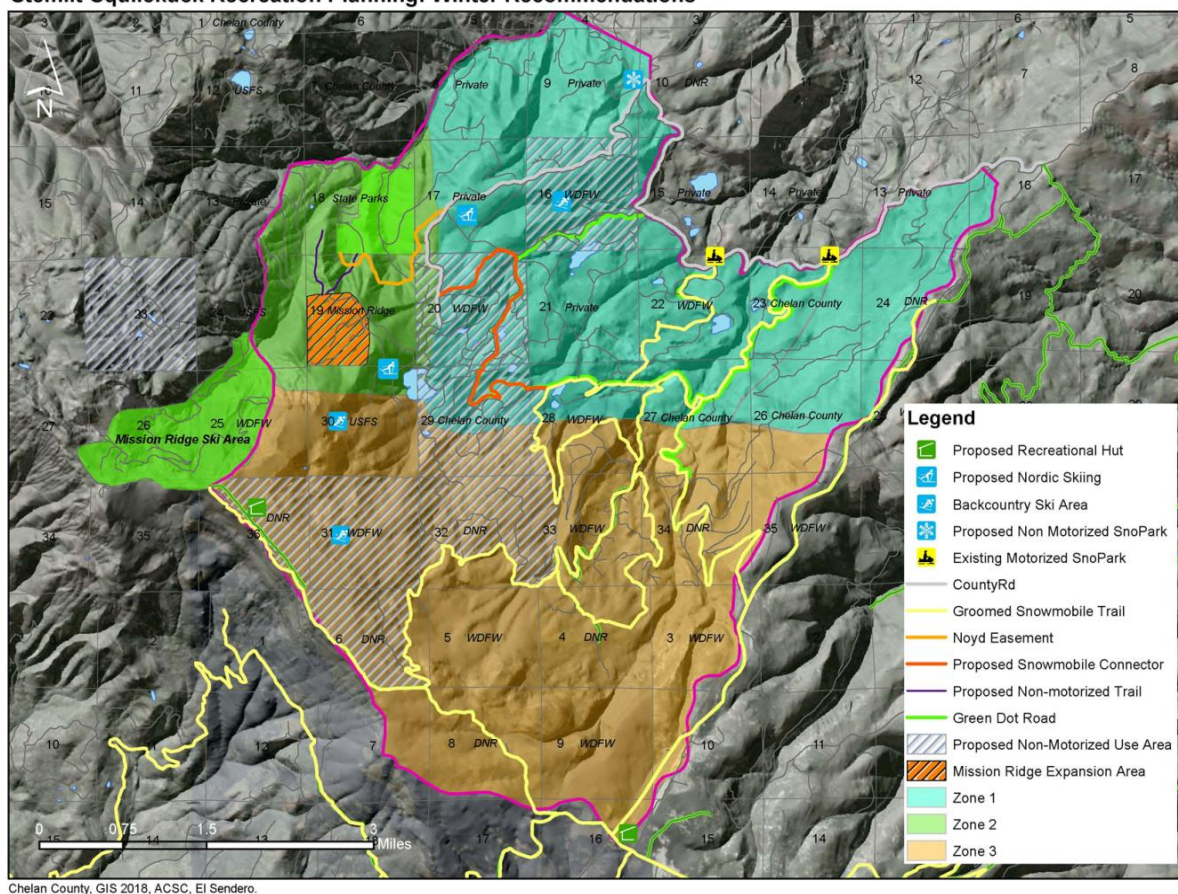


Figure 16. March 2018 Open House Winter Recommendation Map

This map, which encompasses the conceptual ‘play areas’ shown on the Naneum map, plus Section 29 and some additional areas just west of the groomed snowmobile trail system, was presented at the public open house at the Malaga Fire Hall on March 21, 2018. The public meeting had high attendance, and many attendees were motorized users who were concerned about the winter recreation proposal and the impacts it would have on established snowmobile use in the basin. A 90 day public comment period began following the open house, and as previously mentioned, this proposal was the topic of the majority of public comments. Over 170 public comments were received regarding this proposal; comments were nearly evenly split between support for and opposition of the proposed non-motorized area. Public comments can be viewed on the Chelan County Natural Resource Department website at <http://www.co.chelan.wa.us/natural-resources/pages/recreation-planning-documents-and-maps>.

In April of 2018, the motorized community, led by the Apple Country Snowmobile Club, organized a gathering to discuss this proposal. This gathering had over 100 attendees, and staff from Chelan County were in attendance to provide background on the origin of the

proposal. There was strong opposition to any type of non-motorized area in the Stemilt basin, but it was also recognized that because of past and current planning efforts, the motorized community needed to organize a response to the proposal that would fall within the parameters of the state-adopted Naneum Plan. While the motorized group organized this effort and nominated representatives, the planning group welcomed several more members from the motorized community in recognition that this group had not been adequately represented in the planning process to date.

In May 2018, the motorized group representatives presented their counter-proposal to the planning group at a recreation planning meeting. This proposal also focused on a non-motorized area that included many of the conceptual 'play areas' shown in the Naneum Plan, but substantially lessened the amount of high-elevation off-trail area that was included in the original proposal. The counter-proposal shared at the May meeting is shown below.

**Stemilt-Squilchuck Recreation Planning: Winter Motorized Group Proposal**

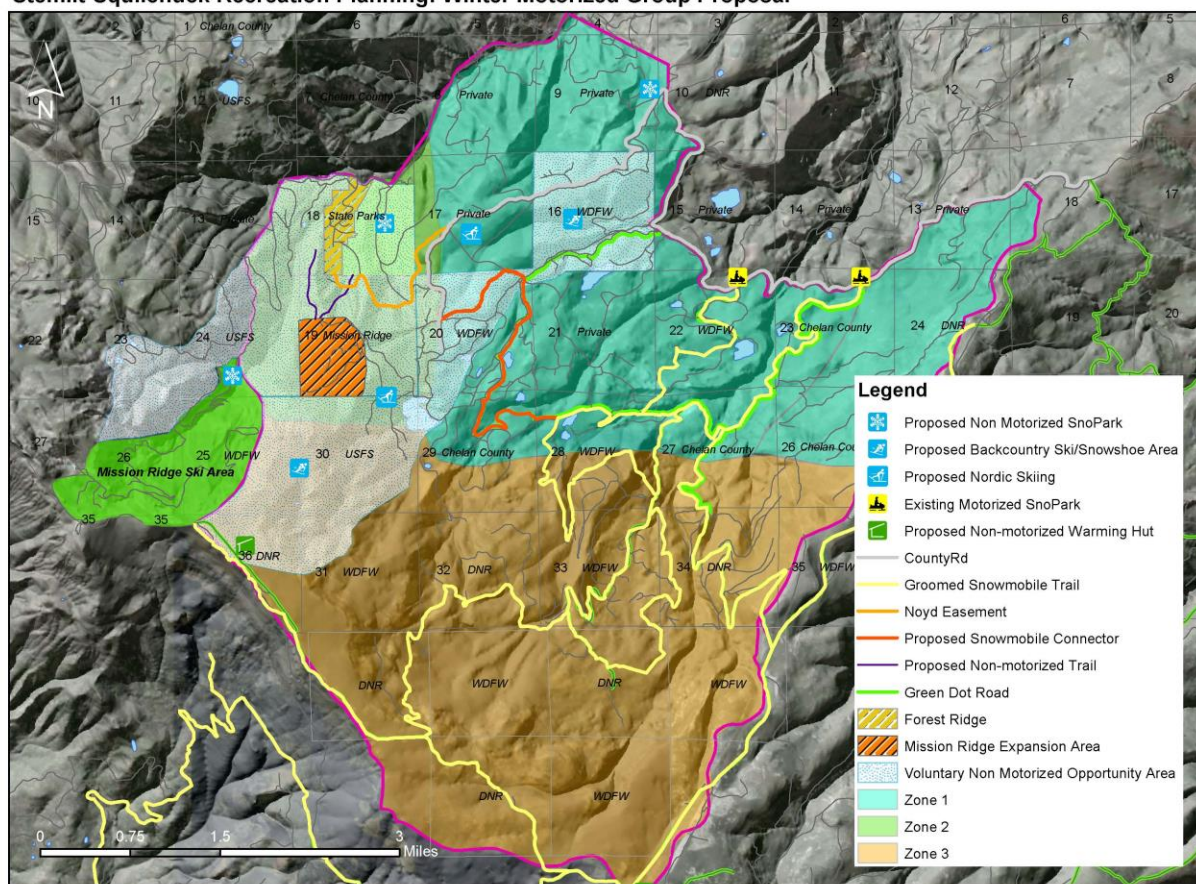


Figure 17. Motorized Group Winter Proposal Map



This proposal was discussed at the planning meeting, and a general consensus at the meeting implied that the group thought more work was needed, but that something close to this proposal would likely be acceptable to the group. A sub-grouped was formed, with equal representation from motorized and non-motorized groups, with the intent of continuing work on this proposal between planning meetings.

The winter recreation subgroup met twice, in June and July of 2018. The group refined boundaries to find a compromise that both motorized and non-motorized representatives thought could provide the experiences both groups desired. During the course of these subgroup meetings, El Sendero Backcountry Ski and Snowshoe Club held a board meeting and the decision was made that El Sendero would officially not agree to any changes to the proposal shown at the March open house. However, the subgroup continued, without the affiliation of El Sendero, to work on a proposal that represented a compromise between the original proposal and the counter-proposal. The subgroup meetings were also attended by agency representatives observing the process and noting the compromise discussed by the subgroup. The compromise proposal resulting from this collaboration is shown below.

## Stemilt-Squilchuck Recreation Planning: Winter Subgroup Proposal

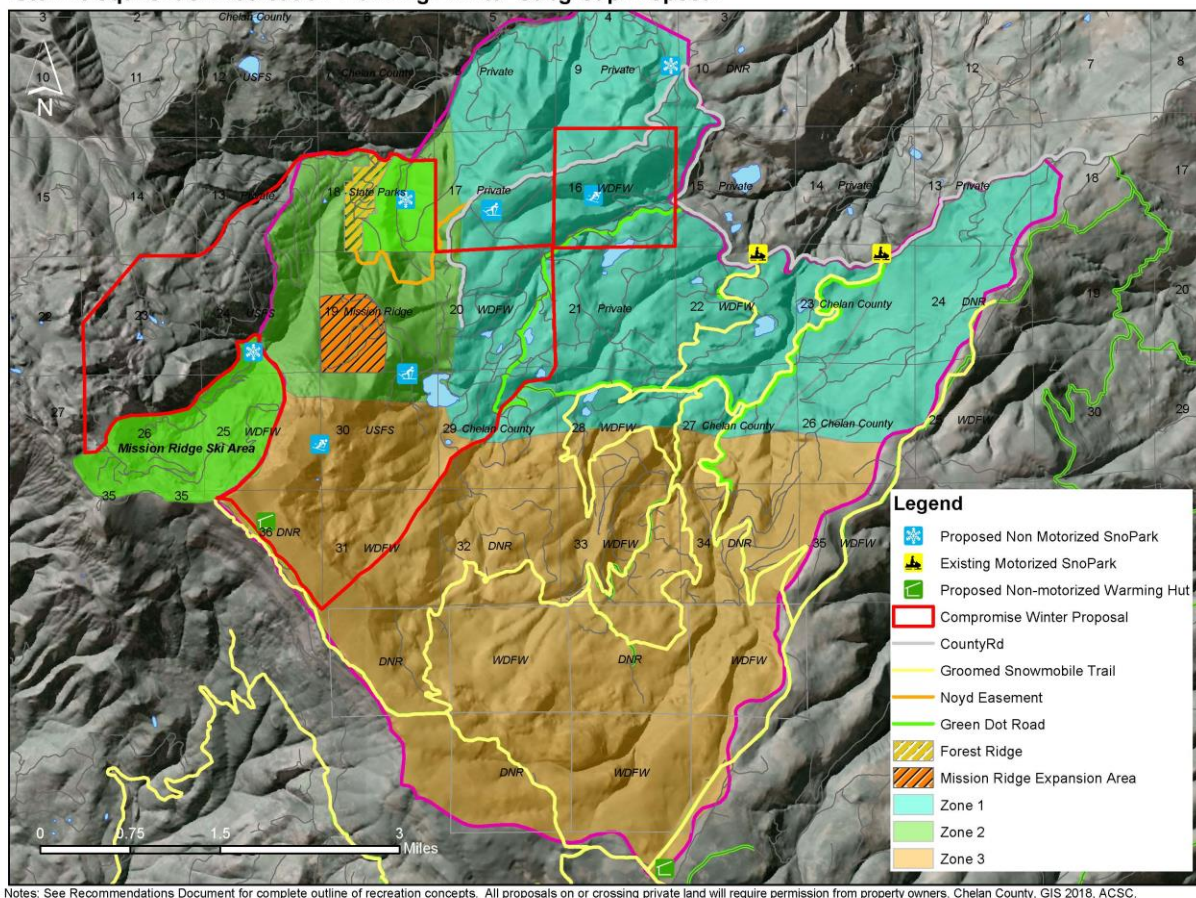


Figure 18. Compromise Winter Proposal Map

This compromise proposal was presented to the planning group at the July 2018 planning meeting. The proposal was met with majority agreement, but because it did not have complete consensus (El Sendero still providing opposition), the group followed the guidance of the Recreation Planning Committee Charter and presented all sides to the Stemilt Partnership and land management agencies. The following map shows three proposals overlaid to clearly show the differences between proposals. Two proposals are not included in this map: the initial proposal that was created by El Sendero that was altered to accommodate the private land ownership, and the ‘do nothing proposal’ from the motorized group that would focus on non-motorized trails but not include a designated non-motorized area. It is important to recognize that there were ‘ideal’ scenarios for each group, but that three proposals shown on the following map all represent compromises on different ends.

## Stemilt-Squilchuck Recreation Planning: Winter Subgroup Proposal

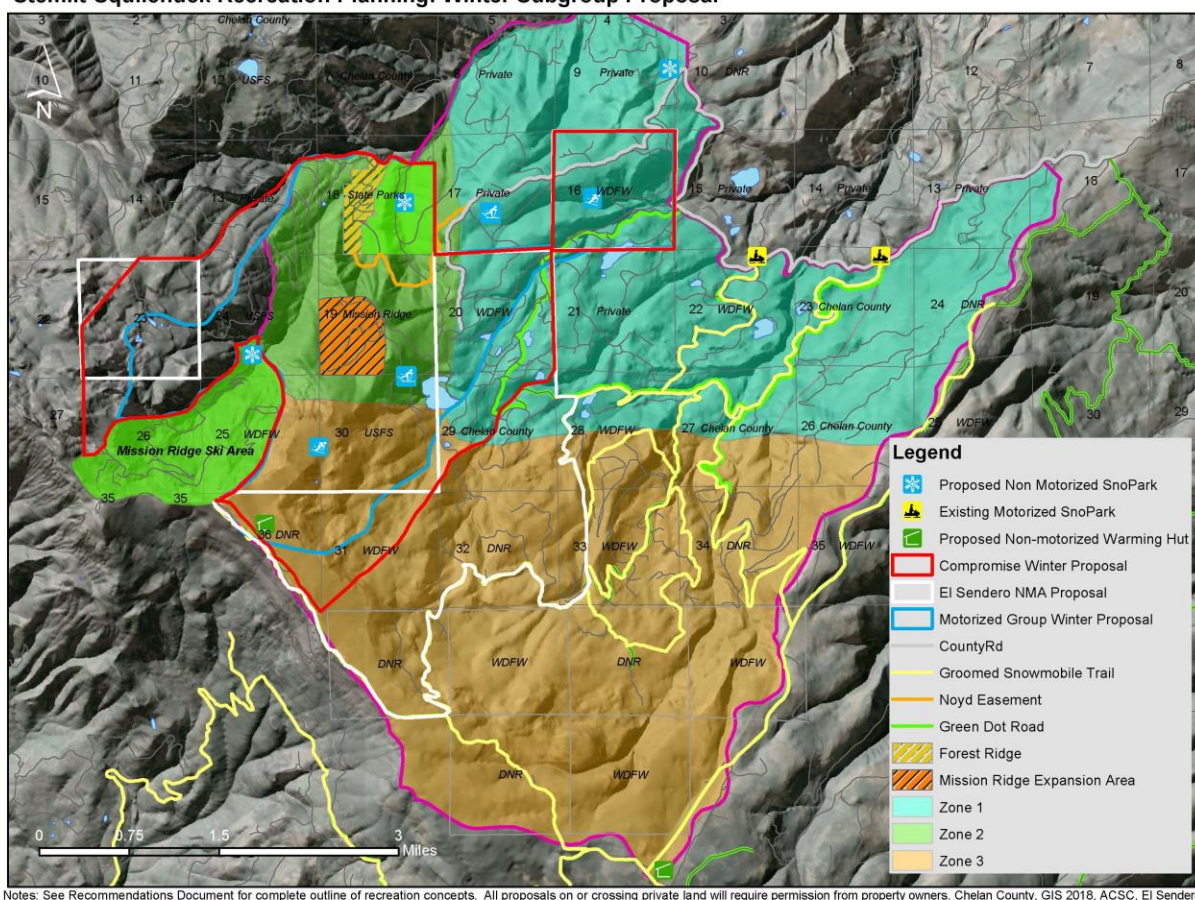


Figure 19. All Winter Proposals Map

The total planning area, including WDFW Section 23 (Lake Clara area) is 17,995 acres (the planning area does not include area currently within the Mission Ridge Ski Area Boundary). It is important to note that the Mission Ridge Ski Area Boundary is used in the following calculations, but the Mission Ridge Permit Area Boundary is larger than the Mission Ridge Ski Area Boundary, and currently carries restrictions on motorized use under the Special Use Permit. The Mission Ridge Permit Area Boundary is shown on the Winter Recommendations Map in the body of the plan, while the maps and calculations in this section use the Mission Ridge Ski Area Boundary. The take-away is that a small amount of the acres included in the following calculations are already designated as non-motorized under the Mission Ridge Special Use Permit.

The total acreage of **state and county** land within the planning area is 12,953 acres. The amount of state/county land within the planning area encompassed by each non-motorized area proposal is as follows (not including Squilchuck State Park, which is already non-motorized, or the Mission Ridge Ski Area Boundary):

- El Sendero Proposal: 4,535 acres

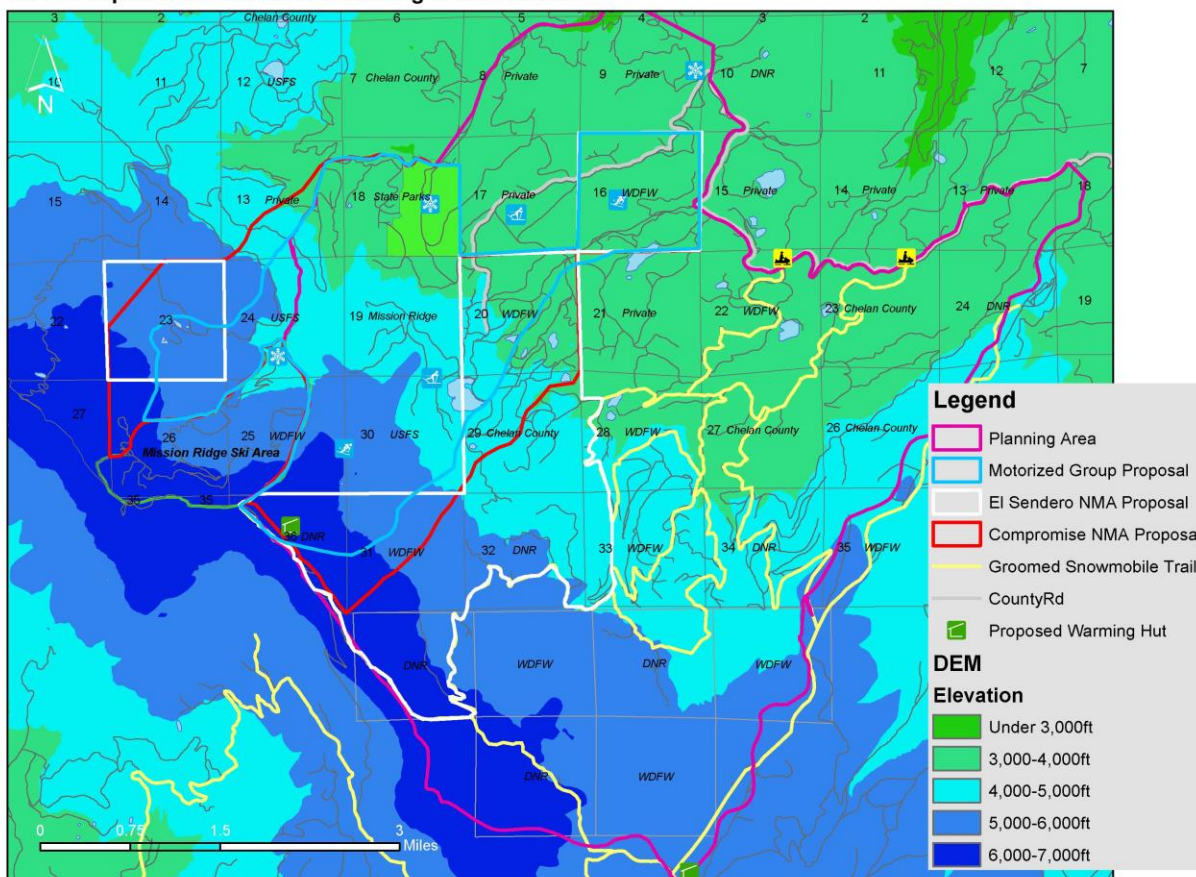


- Motorized Counter-proposal: 1,882 acres
- Compromise Proposal: 3,026 acres

These calculations don't include USFS or private lands. The Naneum Plan concept drawing encompasses approximately 3,780 acres. It should also be noted that the Mission Ridge permit area boundary, which is larger than the current ski area boundary, is already non-motorized and occurs of state land, so there is some overlap of the area proposed to be included in the non-motorized area, and area that is already non-motorized under the Mission Ridge special use permit.

Also of interest to user groups who are looking for off-trail recreation experiences with high quality terrain and snowpack is the amount of high-elevation terrain included in each proposal. The following map shows elevation changes through the planning area, with the different proposal boundaries overlaid. This gives some perspective on the amount of high-elevation terrain included in each proposal.

**Stemilt-Squilchuck Recreation Planning Area Elevation**



Notes: See Recommendations Document for complete outline of recreation concepts. All proposals on or crossing private land will require permission from property owners. Chelan County, GIS 2018, ACSC, El Sendero.

Figure 20. Stemilt Elevation Map with All Winter Proposals

Of that:

- 1,682 acres are 6,000ft or higher
- 4,133 acres are 5,000-6,000ft
- 4,614 acres are 4,000-5,000ft

The different proposals include the following percentages of the highest elevation terrain in the basin (6,000ft or higher):

- El Sendero proposal: 51%
- Motorized group counter-proposal: 21%
- Compromise proposal: 36%

There are still several steps to be worked out with implementation. The following points will need to be addressed through continued stakeholder involvement:

1. A motorized route providing access from Forest Ridge neighborhood to the groomed snowmobile trail system, that crosses the non-motorized area with the *least impact to non-motorized recreation possible*, needs to be established. This will require coordination between Forest Ridge residents, private landowners, and the motorized and non-motorized group representatives. Upper Wheeler Road, as a County Road, will continue to be accessible to motorized vehicles during winter, and may be part of this route accessing the groomed snowmobile trail system.
2. A strategy to include the USFS and private properties included in the proposed area needs to be identified. Several options exist: a) the portions of the area on these lands are designated as voluntary and unenforced, with no mandate on the land owner to adopt this policy, b) not include these areas at all and assume that because they are surrounded by non-motorized area that they won't get motorized use, or c) work with USFS and private landowners to officially adopt these areas as enforceable non-motorized areas. The recommended option here is option a, with proposals to USFS and landowners to adopt this policy when they complete winter travel planning.
3. Boundaries of the non-motorized area need to be ground-truthed by members of both the motorized and non-motorized communities, with GPS and mapping tools, using terrain features that will encourage compliance and preserve the desired types of opportunities expressed by both groups during the planning process. A system of marking play areas and non-motorized trails/routes needs to be

determined. Options for marking include colored symbols affixed to trees, signs at entrance/exit points, trail intersection signs, trailhead maps, etc.

The majority of the planning group felt that the compromise proposal represented a good-faith effort to reach a compromise between all user groups that can provide the opportunities mandated by the Naneum Plan by providing high-quality terrain and access to both motorized and non-motorized users. Agency staff have also shown support for this compromise proposal and the collaboration that occurred between user groups in reaching it. This document provides background on the work done by both the planning group and the community at large to bring the Naneum concepts to a point where they can be implemented on the ground in a way that works for the local community.

In November 2018, the Stemilt Partnership was asked to provide a vote of overall approval/disapproval of the plan, as well as a vote for which of the alternatives was preferred. Only official members of the Stemilt Partnership, as identified in the 2015 Stemilt Partnership Operating Procedures, were asked to vote. Of the 26 respondents, 25 voted in support of the plan, with a response of either “I support the plan as is”, or “I can live with the decision and accept the plan, even though it may not be exactly what I want”. As for the winter recreation alternatives vote, 61% voted for the Compromise Proposal, 31% voted for the Motorized Group Winter Proposal, and 8% voted for the El Sendero Non-motorized Area Proposal. This voting process was intended to ensure that the Draft Plan is in line with Stemilt Partnership values, and to help land managers in decisions moving forward.

Following the SEPA comment period and public hearings, the Chelan County Board of County Commissioners held several special sessions with Chelan County Natural Resource Department staff to better understand the recommendations- especially the winter recommendations- contained within the plan. Following these sessions, the Commissioners were able to support the Compromise Winter Proposal with some clarifications. These clarifications do not represent any changes to the proposal; rather they provide detail that is important to all user groups but was not expounded upon in the concise wording of the recommendations. The following clarifications should be used as guidelines when implementing the recommendation.

#### Motorized Access:

- **No existing snowmobile access points will be affected by this proposal** (including: Lily Lake Snopark, Clear Lake Snopark, Beehive Road, Graffiti Rock, Forest Ridge). If, for reasons outside the scope of this plan, snopark locations need to change, agencies and/or landowners will collaborate with user groups to assess other possible snopark locations.

- **No groomed snowmobile routes will be affected by this proposal** (including access up to Microwave tower along Naneum Ridge Road). If snopark locations change for reasons outside of the scope of this plan, new groomed connections to the existing groomed trail system will be included in the assessment of alternative snopark locations.
- Authorized users of the Noyd easement may still travel via snowmobile across non-motorized area into groomed snowmobile trail system on a designated route (TBD). The intersection of the designated route and any non-motorized trails will be well marked.
- Upper Wheeler Road would not be closed to motorized traffic during winter as per County Public Works policy, but there would *not* be improved parking for snowmobile trailers at the base and therefor motorized traffic would be minimal.

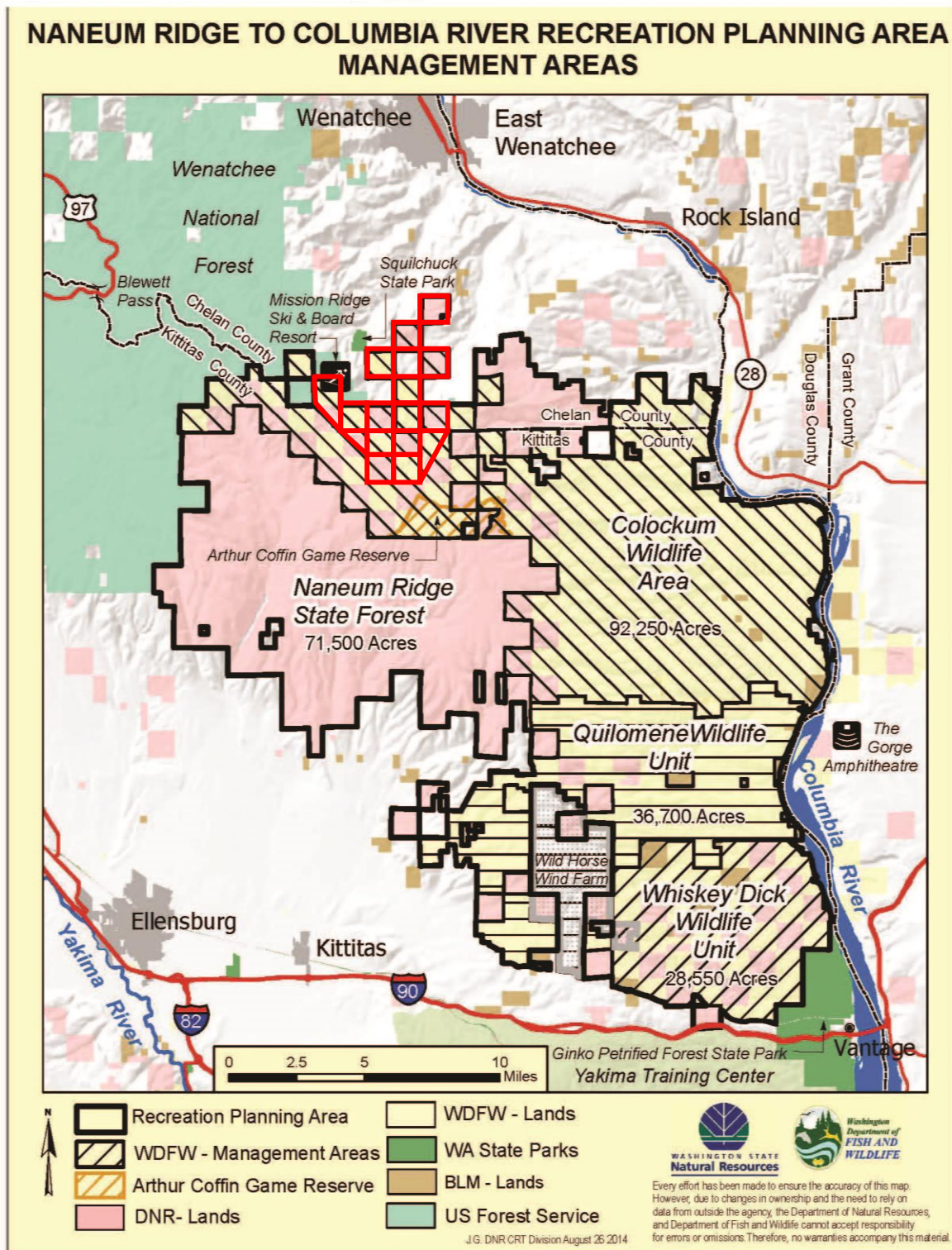
#### Non-motorized access:

- High elevation non-motorized play areas included within the proposal area focus on areas of specific interest to backcountry skiers: slopes above Clara and Marion Lakes in WDFW Section 23, slopes below proposed backcountry hut in DNR Section 36 and above Upper Wheeler Reservoir to the south and west.
- Non-motorized opportunity in lower elevations will focus on development of marked routes for snowshoeing, cross country skiing, and fat-tire biking and identification of non-motorized parking at access points (Squilchuck State Park, Upper Wheeler Road or Orr Creek Road, and possibly Mission Ridge are identified as access points in the plan). Marking routes and establishing parking provides the non-motorized opportunities that many in the valley desire and is consistent with the Naneum Plan concept. These routes can be designed to avoid conflict with motorized use in the area (Noyd Easement, Upper Wheeler Road).
- Main focus should be on implementing the trails/access points/play areas rather than on enforcement of the boundary. The concept is to have logical play areas/trails that don't need excessive on-the-ground enforcement.

These guidelines should be revisited regularly following implementation to gauge success in providing or continuing access to quality recreation opportunities for both groups. The Winter Recreation Compromise Proposal will be implemented and guided by an Implementation Committee comprised of local community recreation representatives. The Committee will report semi-annually to the Chelan County Commissioners on the challenges and opportunities of implementing the Winter Recreation Compromise Proposal. After two years, if the Commissioners determine that significant challenges remain, then the Committee will propose solutions to these challenges. This recommendation, as with all other recommendations in the plan, will be a community effort.



## Appendix F: Naneum Plan/Stemilt Plan Area Overlap Context Map



= State lands included in the Stemilt-Squilchuck Recreation Plan