

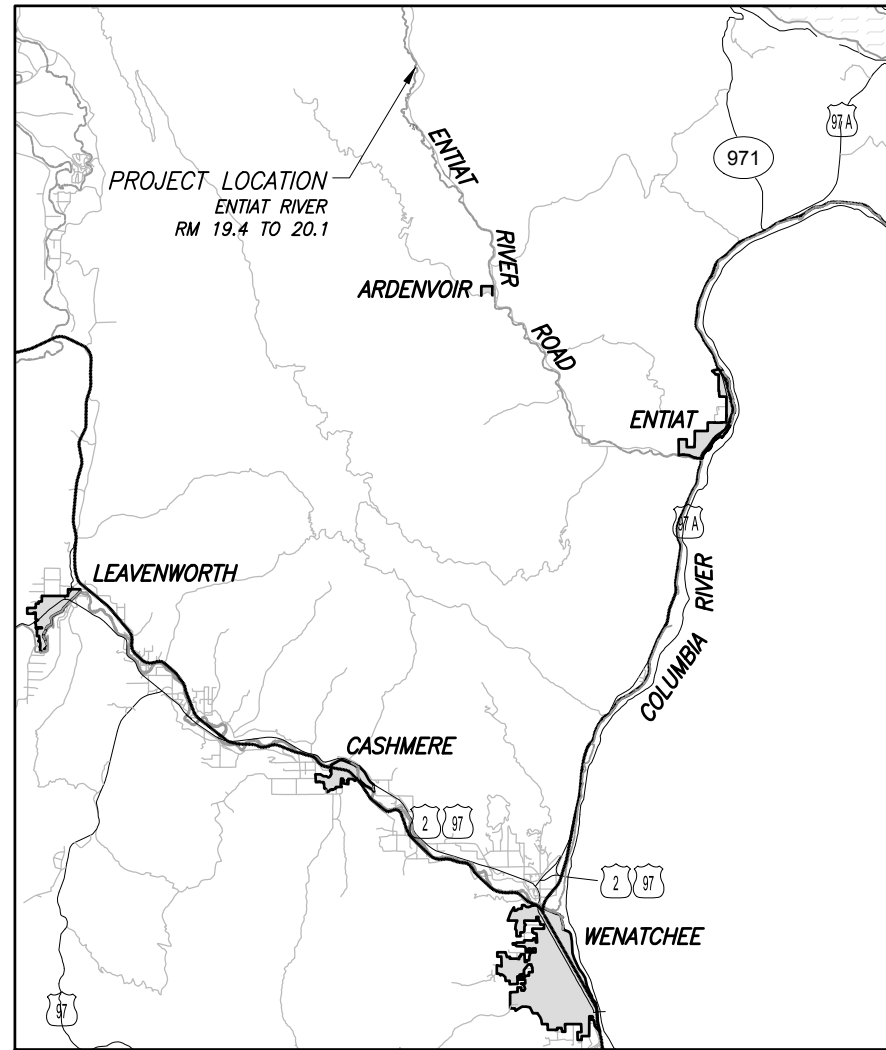
SITE SUMMARY

Chelan County
Entiat, Washington

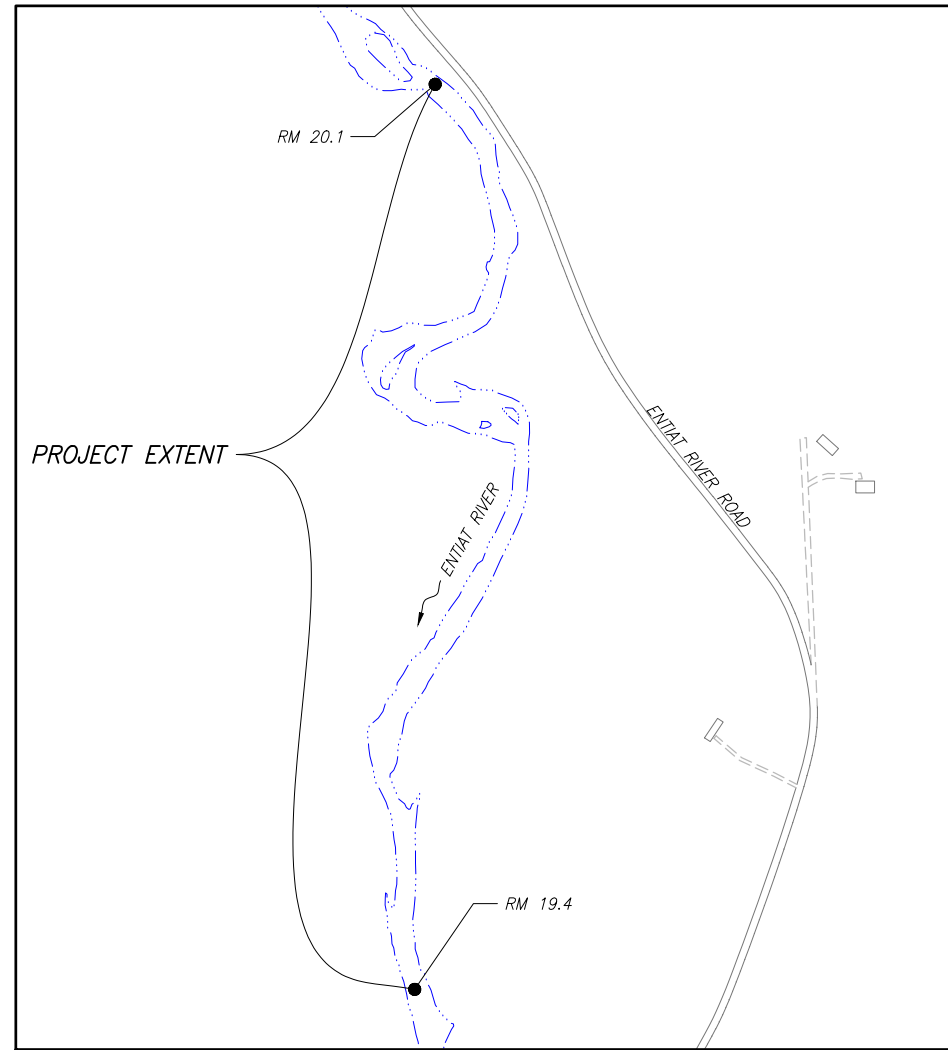
S14 T27N R19E

N47°50'20" W120°25'3"

STORMY REACH – AREA B 2020 PLANTING
Entiat River Subbasin
Chelan County, Washington



LOCATION MAP
NOT TO SCALE



VICINITY MAP
NOT TO SCALE

SHEET LIST

SHEET#	SHEET ID	SHEET TITLE
1	G1	COVER
2	G2	GENERAL NOTES & SUMMARY OF QUANTITIES
3	L1	PLANTING PLAN
4	L2	PLANT SCHEDULE
5	L3	PLANTING DETAILS

DATE AND TIME PLOTTED
DATE AND TIME PLOTTED
PLOTTED BY

CAD SYSTEM
CAD FILENAME
STANDARD_PLANTINGCOVER_2020



CHELAN COUNTY NATURAL RESOURCE DEPARTMENT
411 WASHINGTON, SUITE 201
WENATCHEE, WA 98801
TELEPHONE: (509) 667-6612
CONTACT: MR. PETE CRUICKSHANK



ALWAYS THINK SAFETY

U.S. DEPARTMENT OF THE INTERIOR
BUREAU OF RECLAMATION
COLUMBIA SNAKE RIVER SALMON RECOVERY PROGRAM
CORPS HABITAT IMPROVEMENT PROGRAM
ENTIAT RIVER SUBBASIN
STORMY REACH – AREA B 2020 PLANTING
COVER

CONTRACTOR
DRAWN

ACCEPTED

BOISE, ID 2019-09-14

COVER

SHEET G1

SHEET 1 OF 5

DATE AND TIME PLOTTED
 11/13/2019 10:43:50 PM
 PLOTTED BY

CAD SYSTEM
 11/13/2013
 CAD FILENAME
 STORMWTR_PLANTINGCOVER_2020

GENERAL NOTES

1. THE WORK SHOWN ON THESE PLANS WILL BE PERFORMED FOR CHELAN COUNTY NATURAL RESOURCE DEPARTMENT, HEREIN REFERRED TO AS THE "CONTRACTING AGENCY." THE DEPARTMENT'S REPRESENTATIVE WILL BE MR. PETE CRUICKSHANK OR OTHER PERSONS ASSIGNED BY CHELAN COUNTY NATURAL RESOURCE DEPARTMENT TO ACT AS THE CONTRACTING AGENCY'S REPRESENTATIVE, HEREIN REFERRED TO AS THE "CONTRACTING OFFICER."
2. ANY ITEM NOT SPECIFICALLY DISCUSSED IN THE GENERAL CONTRACT FOR THIS PROJECT OR IN NOTES ON SHEETS IN THE PLANS SHALL BE AS DESCRIBED IN THE STANDARD SPECIFICATIONS FOR ROADS, BRIDGES, AND MUNICIPAL CONSTRUCTION, 2020 PUBLISHED BY THE STATE OF WASHINGTON DEPARTMENT OF TRANSPORTATION. THE CONTRACTOR IS RESPONSIBLE TO BE FAMILIAR WITH THE STANDARD SPECIFICATIONS AND TO HAVE ACCESS TO THE STANDARD SPECIFICATIONS AT THE PROJECT SITE TO ENSURE THAT CONSTRUCTION OF THE PROJECT IS IN CONFORMANCE WITH THE STANDARD SPECIFICATIONS.
3. THE NOTES ON THIS PLAN SET SUPERSEDE ANY DUPLICATE ITEMS IN THE STANDARD SPECIFICATIONS.
4. HORIZONTAL DATUM: US STATE PLANE COORDINATE SYSTEM, WASHINGTON NORTH ZONE, NAD83/91, US SURVEY FEET.

VERTICAL DATUM: NAVD88, US SURVEY FEET.
5. TOPOGRAPHIC MAPPING WITHIN STREAM BANKS OF THE PROJECT AREA PERFORMED BY U.S. BUREAU OF RECLAMATION IN 2014, TOPOGRAPHIC MAPPING OUTSIDE THE STREAM BANKS IS BASED ON 2006 LIDAR, CHELAN COUNTY, WASHINGTON.
6. DUE TO CONTINUED EROSION OF THE STREAM BANK, THE GEOMETRY OF THE STREAM BANKS AT THE TIME OF PLANTING COULD BE DIFFERENT THAN SHOWN ON THESE PLANS.
7. ELEVATIONS AND DISTANCES SHOWN ARE IN FEET AND DECIMALS WITH CONTOUR INTERVALS AT ONE FOOT INCREMENTS.
8. THE CONTRACTOR SHALL BE RESPONSIBLE FOR DESIGN, PERMITTING, AND EXECUTION OF ANY AND ALL TRAFFIC CONTROL MEASURES DEEMED NECESSARY.
9. LAND OWNERSHIP BOUNDARIES ARE APPROXIMATE AND FOR DISPLAY PURPOSE ONLY. LAND OWNERSHIP BOUNDARIES DERIVED FROM GIS SHAPE FILE PRODUCED BY CHELAN COUNTY.
10. EXISTING UTILITY LOCATIONS HAVE NOT BEEN IDENTIFIED AND ARE NOT SHOWN ON THESE PLANS. THE CONTRACTOR IS RESPONSIBLE TO LOCATE UTILITIES PRIOR TO PLANTING AND PROTECT UTILITIES DURING PLANTING AS DESCRIBED IN SECTION 1-07.17 OF THE STANDARD SPECIFICATIONS. THE TELEPHONE NUMBER FOR THE ONE CALL CENTER FOR UTILITY LOCATES IS 1-800-424-5555.
11. THE CONTRACTOR SHALL PURSUE WORK IN A CONTINUOUS AND DILIGENT MANNER TO ENSURE A TIMELY COMPLETION OF THE PROJECT. ALL PLANTING SHALL BE ACCOMPLISHED BETWEEN OCTOBER 1 AND NOVEMBER 15, 2020.
12. CONTRACTOR SHALL CONFIRM THE ACCESS POINT, ROUTE(S), AND LOCATION OF STORAGE OF MATERIALS AND EQUIPMENT WITH THE CONTRACTING OFFICER PRIOR TO TRANSPORTING MATERIALS AND EQUIPMENT TO THE PROJECT SITE.
13. PRIOR TO COMMENCEMENT OF WORK, CONTRACTOR SHALL PROVIDE THE CONTRACTING AGENCY WITH A DETAILED PLANTING SCHEDULE AND WORK PLAN FOR APPROVAL. THE CONTRACTOR SHALL NOT BEGIN ANY PLANTING WORK UNTIL THE PROJECT SCHEDULE AND WORK PLAN IS APPROVED BY THE CONTRACTING OFFICER.
14. ALL PLANTING SHALL BE CLOSELY COORDINATED WITH THE CONTRACTING OFFICER SO THAT THE QUALITY OF WORK CAN BE CHECKED FOR APPROVAL.
15. THE CONTRACTOR SHALL BE RESPONSIBLE FOR MAINTAINING THE SITE IN A NEAT AND ORDERLY MANNER THROUGHOUT THE PLANTING PROCESS. ALL MATERIALS SHALL BE STORED WITHIN APPROVED PLANTING STAGING AREAS.

SUMMARY OF QUANTITIES

ITEM NO.	QUANTITY	UNITS	DESCRIPTION
LANDSCAPING			
1.	13	EA	Plant Selection - TREPOT T414
2.	6,699	EA	Plant Selection - DEEPOT D40
3.	2.75	ACRE	PERMANENT SEEDING -Floodplain Field & Upland
4.	909	CY	WOOD STRAND MULCH



ALWAYS THINK SAFETY

U.S. DEPARTMENT OF THE INTERIOR
 BUREAU OF RECLAMATION
 COLUMBIA SNAKE RIVER SALMON RECOVERY PROGRAM
 FORPS HABITAT IMPROVEMENT PROGRAM
ENTIAT RIVER SUBBASIN

STORMY REACH - AREA B 2020 PLANTING
 GENERAL NOTES & SUMMARY OF QUANTITIES

CONTRACTOR
 DRAWN

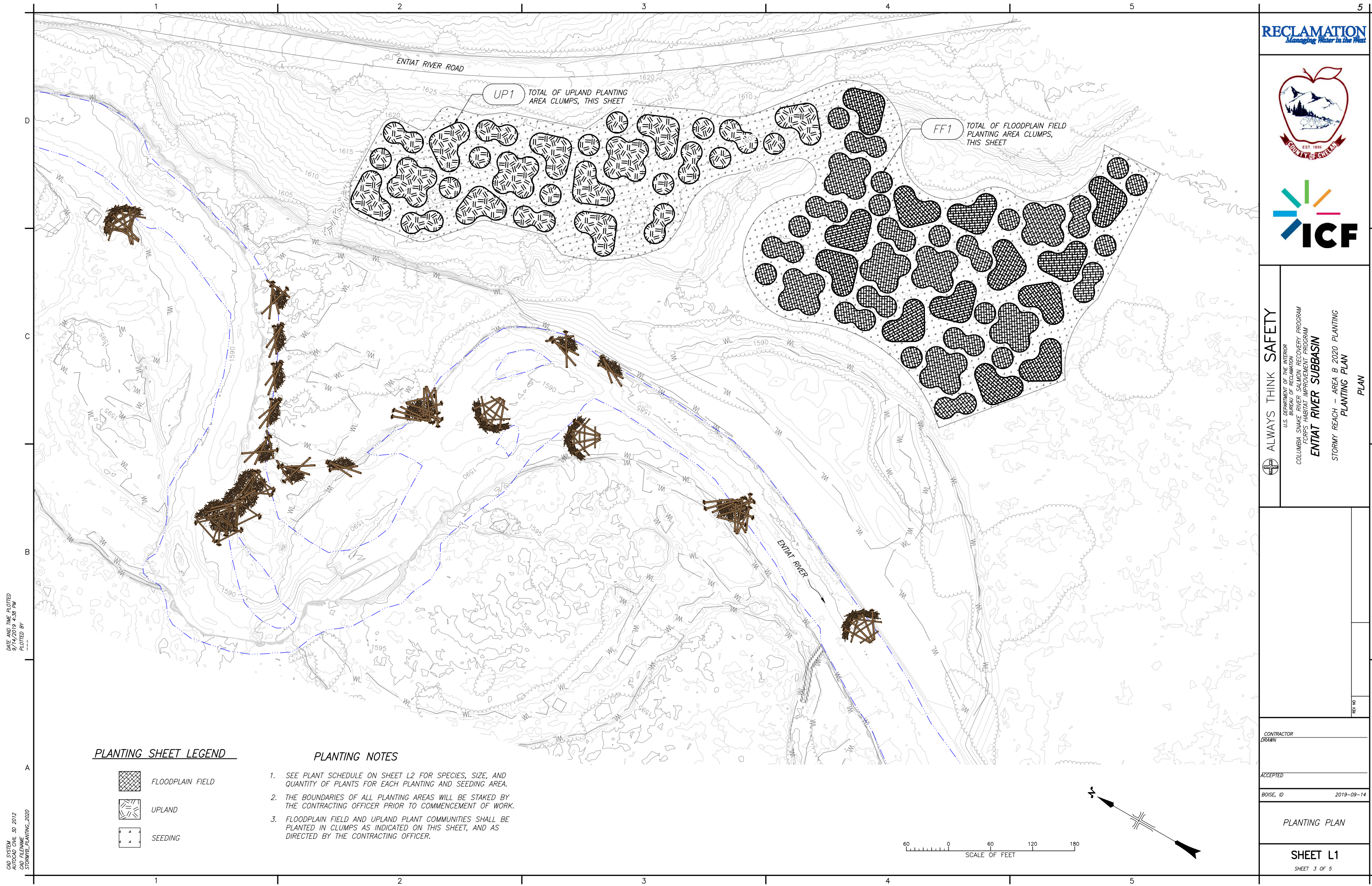
ACCEPTED

BOISE, ID 2019-09-14

GENERAL NOTES &
 SUMMARY OF QUANTITIES

SHEET G2

SHEET 2 OF 5



⊕ ALWAYS THINK SAFETY

U.S. DEPARTMENT OF THE INTERIOR
BUREAU OF RECLAMATION
COLUMBIA SNAKE RIVER SALMON RECOVERY PROGRAM
CORPS HABITAT IMPROVEMENT PROGRAM

ENTIAT RIVER SUBBASIN

STORMY REACH - AREA B 2020 PLANTING
PLANTING PLAN

CONTRACTOR
DRAWN

ACCEPTED

BOISE, ID 2019-09-14

PLANTING PLAN



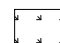
SHEET L1

SHEET 3 OF 5

DATE AND TIME PLOTTED
DATE AND TIME PLOTTED BY

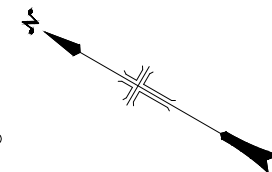
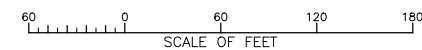
CAD SYSTEM
CAD FILENAME
STORMY_PLANTING_2020

PLANTING SHEET LEGEND

-  FLOODPLAIN FIELD
-  UPLAND
-  SEEDING

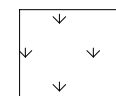
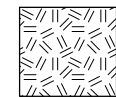
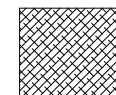
PLANTING NOTES

1. SEE PLANT SCHEDULE ON SHEET L2 FOR SPECIES, SIZE, AND QUANTITY OF PLANTS FOR EACH PLANTING AND SEEDING AREA.
2. THE BOUNDARIES OF ALL PLANTING AREAS WILL BE STAKED BY THE CONTRACTING OFFICER PRIOR TO COMMENCEMENT OF WORK.
3. FLOODPLAIN FIELD AND UPLAND PLANT COMMUNITIES SHALL BE PLANTED IN CLUMPS AS INDICATED ON THIS SHEET, AND AS DIRECTED BY THE CONTRACTING OFFICER.



DATE AND TIME PLOTTED
04/20/20 10:40 PM
PLOTTED BY

CAD SYSTEM
04/20/20 10:40 PM
CAD FILENAME
STORMWTR_PLANTING_2020



FLOODPLAIN FIELD PLANT SCHEDULE

AREA QUANTITIES

PLANT TYPE	ID	SPECIES NAME	COMMON NAME	SIZE	TOTAL QUANTITY	FF1 (TOTAL)
CONIFEROUS TREES						
	PIPO	PINUS PONDEROSA	PONDEROSA PINE	DEEPOT D40	13	13
DECIDUOUS TREES						
	AMAL	AMELANCHIER ALNIFOLIA	SERVICEBERRY	DEEPOT D40	78	78
	CRDO	CRATAEGUS DOUGLASII	BLACK HAWTHORNE	DEEPOT D40	235	235
	POBA	POPULUS BALSAMIFERA SSP. TRICHOCARPA	BLACK COTTONWOOD	DEEPOT D40	13	13
	POTR	POPULUS TREMULOIDES	QUAKING ASPEN	DEEPOT D40	13	13
	SALU	SALIX LUCIDA SSP. LASIANDRA	PACIFIC WILLOW	TREEPOT TP414	13	13
DECIDUOUS SHRUBS						
	HODI	HOLIDISCUS DISCOLOR	OCEAN SPRAY	DEEPOT D40	78	78
	RIAU	RIBES AUREUM	GOLDEN CURRANT	DEEPOT D40	78	78
	RONU	ROSA NUTKANA	NOOTKA ROSE	DEEPOT D40	235	235
	ROWO	ROSA WOODSII	WOODS' ROSE	DEEPOT D40	235	235
	SASC	SALIX SCOULERIANA	SCOULER'S WILLOW	DEEPOT D40	13	13
	SPDO	SPIREA DOUGLASII	DOUGLAS SPIREA	DEEPOT D40	78	78
	SYAL	SYMPHORICARPOS ALBUS	SNOWBERRY	DEEPOT D40	157	157

PLANT SCHEDULE NOTES

- SEE SHEET L1 FOR LOCATION OF EACH PLANTING AREA.
- ALL PLANTS WILL BE PROVIDED BY THE CONTRACTING AGENCY AT NO COST TO THE CONTRACTOR.
- THE CONTRACTOR SHALL INSTALL CONTAINER PLANTS AND PLUGS AS SHOWN IN THE INSTALLATION DETAILS ON SHEET L3.
- PLANTS SHALL BE EVENLY DISTRIBUTED ACROSS EACH PLANTING AREA AND CLUSTERED WITH LIKE SPECIES.
- IF SUFFICIENT QUANTITIES OF TREEPOT TP414 CONTAINER PLANTS ARE NOT AVAILABLE THE CONTRACTING AGENCY MAY SUBSTITUTE DEEPOT D40 CONTAINER PLANTS FOR THOSE SPECIES TO MEET THE REQUIRED QUANTITIES OF PLANTS.

UPLAND PLANT SCHEDULE

AREA QUANTITIES

PLANT TYPE	ID	SPECIES NAME	COMMON NAME	SIZE	TOTAL QUANTITY	UP1 (TOTAL)
CONIFEROUS TREES						
	PIPO	PINUS PONDEROSA	PONDEROSA PINE	DEEPOT D40	177	177
DECIDUOUS TREES						
	CRDO	CRATAEGUS DOUGLASII	BLACK HAWTHORNE	DEEPOT D40	265	265
	PRVI	PRUNUS VIRGINIANA	CHOCHECHERRY	DEEPOT D40	88	88
EVERGREEN SHRUBS						
	BEAQ	BERBERIS AQUIFOLIUM	OREGON GRAPE	DEEPOT D40	552	552
DECIDUOUS SHRUBS						
	AMAL	AMELANCHIAR ALNIFOLIA VAR. CUSICKII	SERVICE BERRY	DEEPOT D40	265	265
	HODI	HOLIDISCUS DISCOLOR	OCEAN SPRAY	DEEPOT D40	88	88
	PUTR	PURSHIA TRIDENTATA	BITTERBRUSH	DEEPOT D40	88	88
	RIAU	RIBES AUREUM	GOLDEN CURRANT	DEEPOT D40	552	552
	RICE	RIBES CEREUM	WAX CURRENT	DEEPOT D40	552	552
	SACE	SAMBUCUS NIGRA SSP. CERULEA	BLUE ELDERBERRY	DEEPOT D40	88	88
	SPBE	SPIRAEA BETUFOLIA	SHINEYLEAF SPIREA	DEEPOT D40	1103	1103
	SYAL	SYMPHORICARPOS ALBUS	SNOWBERRY	DEEPOT D40	1655	1655

FLOODPLAIN FIELD AND UPLAND SEED MIX

SEED MIX LOCATION	SPECIES NAME	COMMON NAME	LBS PLS/ACRE
ALL PLANTING AREAS, AS INDICATED ON SHEET L1.	ACHILLEA MILLEFOLIUM	WESTERN YARROW	0.5
	ACHNATHERUM HYMENOIDES	INDIAN RICEGRASS	12
	AGROPYRON SPICATUM	BLUEBUNCH WHEATGRASS	12
	ANAPHALIS MARGARITACEA	PEARLY EVERLASTING	0.5
	APOCYNUM ANDROSAEMIFOLIUM	SPREADING DOGBANE	1
	BROMUS CARINATUS	MOUNTAIN BROME	1
	CHAMERION ANGUSTIFOLIUM	FIREWEED	0.25
	ELYMUS GLAUCUS	WILD RYE	1
	ELYMUS TRACHYCAULUS	SLENDER WHEATGRASS	8
	FESTUCA IDAHOENSIS	IDAHO FESCUE	6
	LOMATIUM NUDICAULE	BARESTEM BISCUITROOT	2
	LUPINUS SERICEUS	SILKY LUPINE	20
	POTENTILLA GRACILIS	SLENDER CINQUEFOIL	0.75
	TRITICUM AESTIVUM X SECALE CEREALE	STERILE TRITICALE	60
POA SECUNDA	SANDBERG BLUEGRASS	4	

SEEDING NOTES

- FOLLOWING PLANTING, ALL PLANTING AREAS SHALL BE SEEDED ACCORDING TO THE SEED MIX AND APPLICATION RATES SHOWN ON THIS SHEET.
- ALL SEEDING AREAS SHALL BE PREPARED IN ACCORDANCE WITH THE SPECIFICATIONS. SEEDING AREAS NEED NOT BE CULTIVATED, BUT SHALL BE RAKED OR CHAINED TO ENSURE A FRIABLE SURFACE FREE OF SOIL CLUMP LARGER THAN 2 INCHES IN DIAMETER.



ALWAYS THINK SAFETY

U.S. DEPARTMENT OF THE INTERIOR
BUREAU OF RECLAMATION
COLUMBIA SNAKE RIVER SALMON RECOVERY PROGRAM
CORPS HABITAT IMPROVEMENT PROGRAM

ENTIAT RIVER SUBBASIN

STORMY REACH - AREA B 2020 PLANTING
PLANT SCHEDULE

CONTRACTOR
DRAWN

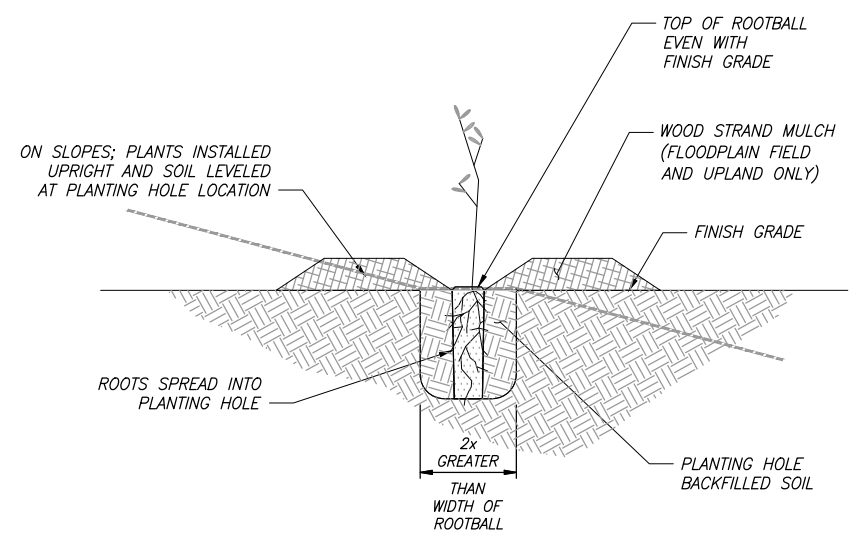
ACCEPTED

BOISE, ID 2019-09-14

PLANT SCHEDULE

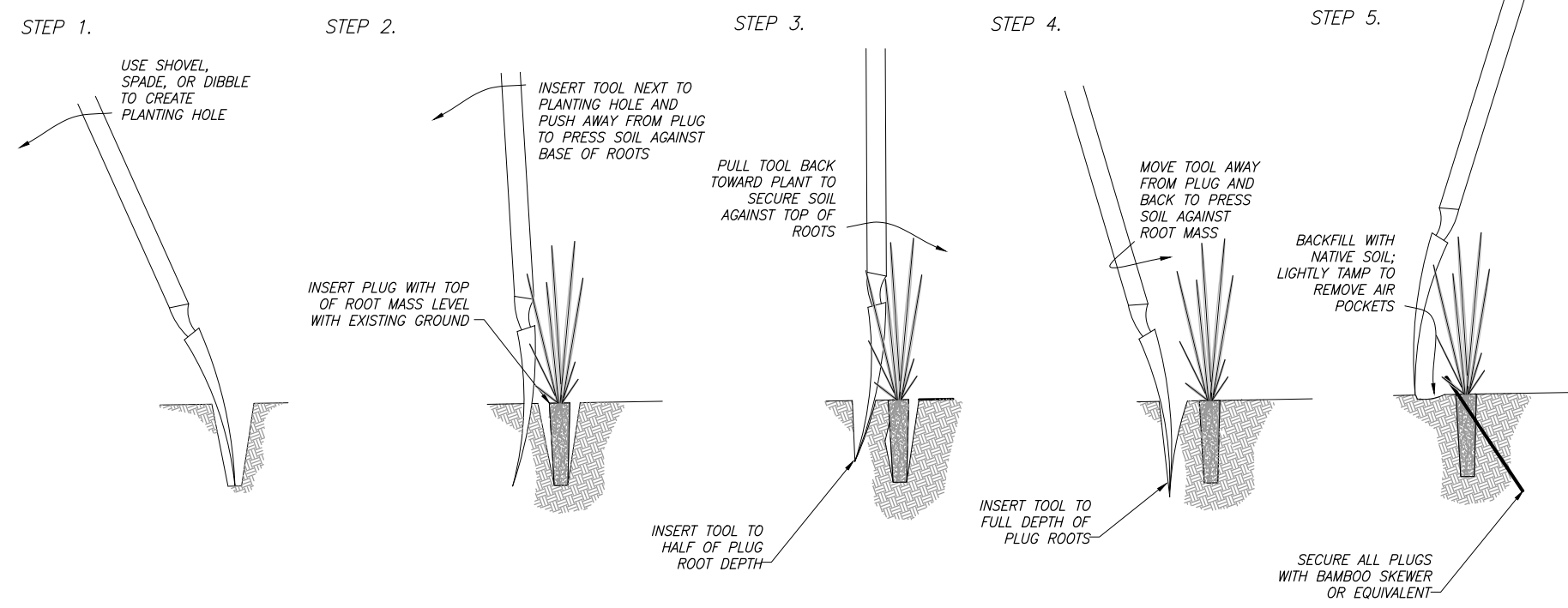
SHEET L2

SHEET 4 OF 5



- ### CONTAINER PLANT INSTALLATION NOTES
1. ALL CONTAINER PLANTS SHALL BE PROPAGATED FROM SEED OR PLANT MATERIAL COLLECTED FROM WITHIN THE ENTIAT WENATCHEE OR METHOW RIVER BASIN.
 2. PRIOR TO INSTALLATION OF CONTAINER PLANT, CLEANLY PRUNE ANY BROKEN BRANCHES AND SCARIFY OUTER 1" OF ROOTBALL. CLEANLY PRUNE BROKEN, DEAD, OR DISEASED ROOTS. ROOTBOUND PLANTS SHALL BE REJECTED.
 3. EXCAVATE CIRCULAR PLANTING HOLE WITH VERTICAL SIDES. SCARIFY SIDES AND BOTTOM OF PLANTING HOLE.
 4. PLACE ROOTBALL ON UNDISTURBED NATIVE SOIL AT BASE OF PLANTING HOLE AND SPREAD ROOTS OUT TO SIDES OF HOLE. CLEANLY TRIM ANY ROOTS THAT ARE TOO LONG TO LAY STRAIGHT IN PLANTING HOLE. PLANTS SHALL BE UPRIGHT, PLUMB, AND TOP OF ROOTBALL SHALL BE EVEN WITH FINISH GRADE. WHEN PLANTING ON SLOPES, CREATE LEVEL PLANTING SURFACE TO ENSURE COVER OF ROOTS ON DOWNHILL SIDE OF PLANT.
 5. BACKFILL PLANTING HOLE WITH SOIL EXCAVATED FROM PLANTING HOLE AND TAMP SOIL AROUND ROOTS. ANY TRASH OR DEBRIS FOUND IN EXCAVATED SOIL SHALL NOT BE USED TO BACKFILL THE PLANTING HOLE. BACKFILL SOIL SHALL MAKE GOOD CONTACT WITH THE ROOTBALL, LEAVING NO VOIDS.
 6. IN FLOODPLAIN FIELD AND UPLAND PLANTING AREAS, ALL PLANTS SHALL BE SURROUNDED BY A 3' DIAMETER 4" DEEP RING OF WOOD CHIP MULCH. TAPER MULCH NEAR PLANT BASE TO ENSURE THAT THE WOOD STRAND MULCH DOES NOT MAKE CONTACT WITH PLANT STEM. TAPER MULCH OUTSIDE 3' DIAMETER TO MEET GRADE AT MULCH ANGLE OF REPOSE.
 7. WITHIN 4 HOURS OF PLANT INSTALLATION, THOROUGHLY WATER IN EACH INSTALLED PLANT.

1 CONTAINER PLANT INSTALLATION
NOT TO SCALE



- ### PLUG INSTALLATION NOTES
1. USE A SHOVEL, SPADE OR DIBBLE TO CREATE A PLANTING HOLE LARGE ENOUGH TO ACCOMMODATE THE ROOT MASS AND SOIL OF THE PLUG WITHOUT BENDING ROOTS AND SUCH THAT THE TOP OF THE ROOT MASS CAN BE PLACED LEVEL WITH THE EXISTING GROUND.
 2. PLACE THE PLUG INTO THE PLANTING HOLE WITH THE TOP OF THE ROOT MASS LEVEL WITH EXISTING GROUND. INSERT TOOL NEXT TO THE PLANTING HOLE TO THE DEPTH OF THE PLANTING HOLE. PUSH TOOL AWAY FROM PLANTING HOLE TO MOVE SOIL AGAINST THE BASE OF THE PLUG'S ROOT MASS.
 3. INSERT TOOL TO HALF OF PLUG'S ROOT DEPTH. PULL TOOL TOWARD THE PLANTING HOLE TO SECURE SOIL AGAINST THE TOP OF THE ROOTS.
 4. INSERT TOOL TO FULL DEPTH OF PLUG ROOTS. MOVE TOOL AWAY FROM PLANTING HOLE AND BACK TOWARD PLANTING HOLE TO PRESS SOIL AGAINST ROOT MASS.
 5. BACKFILL WORK HOLE WITH NATIVE SOIL. REPEAT ON OTHER SIDES OF PLUG AS NEEDED TO ENSURE NO VOIDS AROUND THE ROOT MASS.
 6. SECURE PLUG WITH A BAMBOO SKEWER, OR BIODEGRADABLE EQUIVALENT, THROUGH THE TOP OF THE ROOT MASS AND INTO THE NATIVE SOIL.

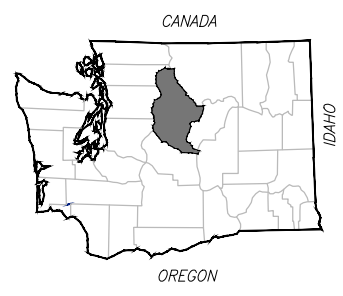
2 PLUG INSTALLATION
NOT TO SCALE

DATE AND TIME PLOTTED: 04/10/2019 10:40 PM
 PLOTTED BY: ---
 CAD SYSTEM: AutoCAD 2012
 CAD FILENAME: STORMWATER_PLANTING_2020



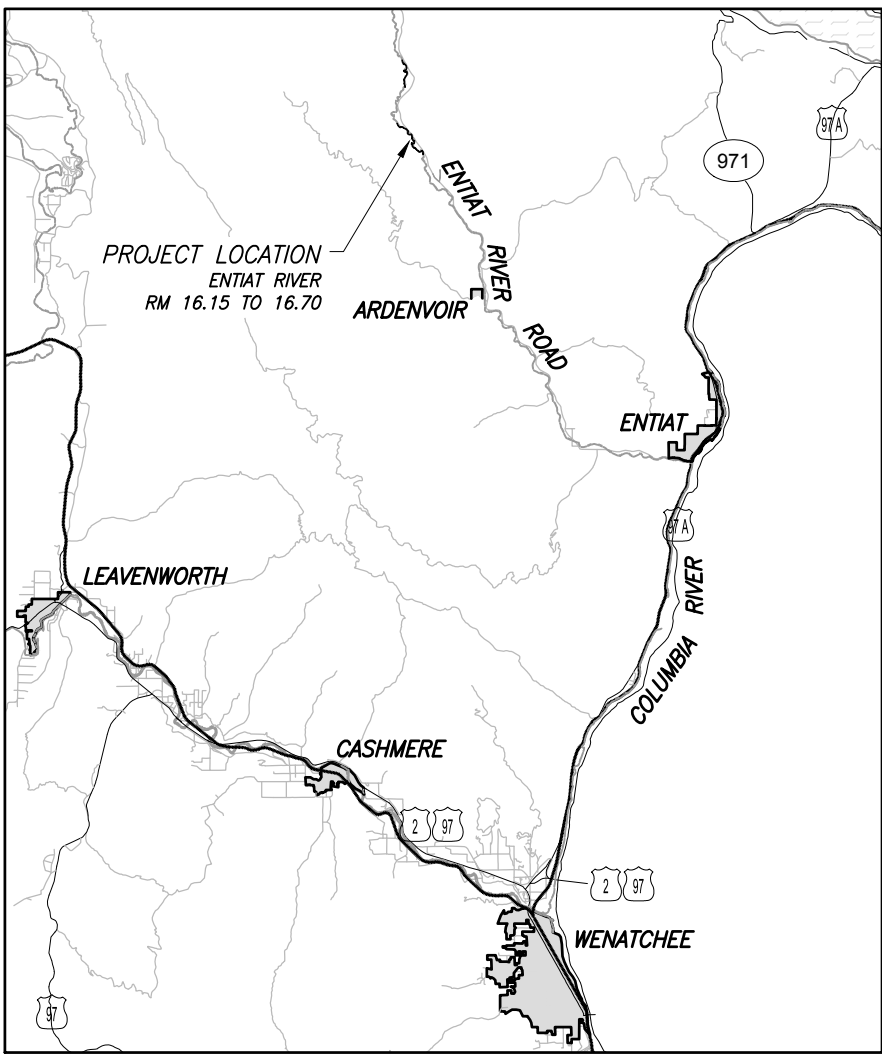
ALWAYS THINK SAFETY
 U.S. DEPARTMENT OF THE INTERIOR
 BUREAU OF RECLAMATION
 COLUMBIA SNAKE RIVER SALMON RECOVERY PROGRAM
 CORPS HABITAT IMPROVEMENT PROGRAM
ENTIAT RIVER SUBBASIN
 STORMY REACH - AREA B 2020 PLANTING
 PLANTING DETAILS

CONTRACTOR DRAWN: _____
 ACCEPTED: _____
 BOISE, ID 2019-09-14

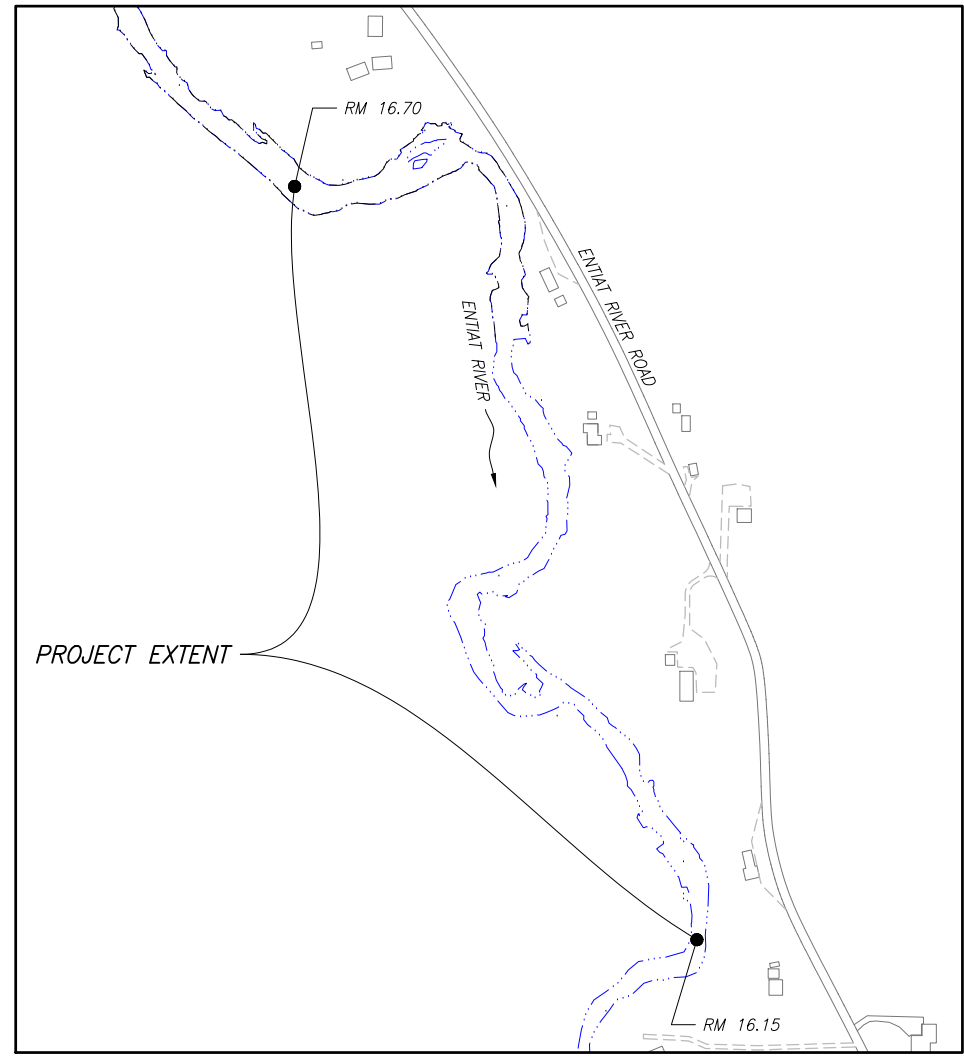


SITE SUMMARY
 Chelan County
 Entiat, Washington
 S35 T27N R19E
 N47°48'5" W120°24'16"

**GRAY REACH – AREA F PLANTING
 Restoration Project
 Chelan County, Washington**



LOCATION MAP
 NOT TO SCALE



VICINITY MAP
 NOT TO SCALE

SHEET LIST

SHEET#	SHEET ID	TITLE
1	G1	COVER
2	G2	GENERAL NOTES & SUMMARY OF QUANTITIES
3	L1	PLANTING PLAN – UPPER SEGMENT
4	L2	PLANTING PLAN – LOWER SEGMENT
5	L3	PLANT SCHEDULE
6	L4	PLANT SCHEDULE
7	L5	PLANT INSTALLATION DETAILS

DATE AND TIME PLOTTED
 01/20/2015 10:43:50 PM
 PLOTTED BY

CAD SYSTEM
 AutoCAD 2013
 CAD FILENAME
 GRAY_PLANTING_COVER



CHELAN COUNTY NATURAL RESOURCES DEPARTMENT
 411 WASHINGTON AVE, SUITE #201
 WENATCHEE, WA 98801
 TELEPHONE: (509) 667-6612
 CONTACT: MR. PETE CRUICKSHANK

ALWAYS THINK SAFETY

U.S. DEPARTMENT OF THE INTERIOR
 BUREAU OF RECLAMATION
 COLUMBIA SNAKE RIVER SALMON RECOVERY PROGRAM
 CORPS HABITAT IMPROVEMENT PROGRAM

ENTIAT RIVER SUBBASIN

GRAY REACH – AREA F PLANTING
 COVER

DRAWN

ACCEPTED

BOISE, ID 2019-09-14

COVER

SHEET G1

SHEET 1 OF 7

GENERAL NOTES

1. THE WORK SHOWN ON THESE PLANS WILL BE PERFORMED FOR CHELAN COUNTY NATURAL RESOURCES DEPARTMENT, HEREIN REFERRED TO AS THE "CONTRACTING AGENCY." THE COUNTY'S REPRESENTATIVE WILL BE MR. PETE CRUICKSHANK OR OTHER PERSONS ASSIGNED BY CHELAN COUNTY TO ACT AS THE CONTRACTING AGENCY'S REPRESENTATIVE, HEREIN REFERRED TO AS THE "CONTRACTING OFFICER."
2. ANY ITEM NOT SPECIFICALLY DISCUSSED IN THE GENERAL CONTRACT FOR THIS PROJECT OR IN NOTES ON SHEETS IN THESE PLANS SHALL BE AS DESCRIBED IN THE STANDARD SPECIFICATIONS FOR ROADS, BRIDGES, AND MUNICIPAL CONSTRUCTION, 2020 PUBLISHED BY THE STATE OF WASHINGTON DEPARTMENT OF TRANSPORTATION. THE CONTRACTOR IS RESPONSIBLE TO BE FAMILIAR WITH THE STANDARD SPECIFICATIONS AND TO HAVE ACCESS TO THE STANDARD SPECIFICATIONS AT THE PROJECT SITE TO ENSURE THAT CONSTRUCTION OF THE PROJECT IS IN CONFORMANCE WITH THE STANDARD SPECIFICATIONS.
3. THE NOTES ON THIS PLAN SET SUPERSEDE ANY DUPLICATE ITEMS IN THE STANDARD SPECIFICATIONS.
4. HORIZONTAL DATUM: US STATE PLANE COORDINATE SYSTEM, WASHINGTON NORTH ZONE, NAD83/91, US SURVEY FEET.

VERTICAL DATUM: NAVD88, FEET.
5. TOPOGRAPHIC MAPPING WITHIN STREAM BANKS OF THE PROJECT AREA PERFORMED BY U.S. BUREAU OF RECLAMATION IN 2014, TOPOGRAPHIC MAPPING OUTSIDE THE STREAM BANKS IS BASED ON 2006 LIDAR, CHELAN COUNTY, WASHINGTON.
6. DUE TO CONTINUED EROSION OF THE STREAM BANK, THE GEOMETRY OF THE STREAM BANKS AT THE TIME OF PLANTING COULD BE DIFFERENT THAN SHOWN ON THESE PLANS.
7. ELEVATIONS AND DISTANCES SHOWN ARE IN FEET AND DECIMALS WITH CONTOUR INTERVALS AT ONE FOOT INCREMENTS.
8. LOCATIONS OF PROPERTY LINES AND EASEMENTS SHOWN ON THESE PLANS ARE APPROXIMATE AND FOR GENERAL INFORMATION ONLY. PROPERTY LINES AND EASEMENTS SHOWN HERE WERE PROVIDED BY CHELAN COUNTY.
9. EXISTING UTILITY LOCATIONS HAVE NOT BEEN IDENTIFIED AND ARE NOT SHOWN ON THESE PLANS. THE CONTRACTOR IS RESPONSIBLE TO LOCATE UTILITIES PRIOR TO PLANTING AND PROTECT UTILITIES DURING PLANTING AS DESCRIBED IN SECTION 1-07.17 OF THE STANDARD SPECIFICATIONS. THE TELEPHONE NUMBER FOR THE ONE CALL CENTER FOR UTILITY LOCATES IS 1-800-424-5555.
10. THE CONTRACTOR SHALL PURSUE WORK IN A CONTINUOUS AND DILIGENT MANNER TO ENSURE A TIMELY COMPLETION OF THE PROJECT. ALL PLANTING SHALL BE ACCOMPLISHED BETWEEN OCTOBER 1 AND NOVEMBER 15, 2020.
11. CONTRACTOR SHALL CONFIRM THE ACCESS POINT, ROUTE(S), AND LOCATION OF STORAGE OF MATERIALS AND EQUIPMENT WITH THE CONTRACTING OFFICER PRIOR TO TRANSPORTING MATERIALS AND EQUIPMENT TO THE PROJECT SITE.
12. PRIOR TO COMMENCEMENT OF WORK, CONTRACTOR SHALL PROVIDE THE CONTRACTING AGENCY WITH A DETAILED PROJECT SCHEDULE AND WORK PLAN. THE CONTRACTOR SHALL NOT BEGIN ANY PLANTING WORK UNTIL THE PROJECT SCHEDULE AND WORK PLAN IS APPROVED BY THE CONTRACTING OFFICER.
13. ALL PLANTING SHALL BE CLOSELY COORDINATED WITH THE CONTRACTING OFFICER.
14. THE CONTRACTOR SHALL BE RESPONSIBLE FOR MAINTAINING THE SITE IN A NEAT AND ORDERLY MANNER THROUGHOUT THE PLANTING PROCESS. ALL MATERIALS SHALL BE STORED WITHIN APPROVED PLANTING STAGING AREAS.

SUMMARY OF QUANTITIES

ITEM NO.	QUANTITY	UNITS	DESCRIPTION
PLANTING			
1	1562	EA	Plant Selection - TREPOT T414
2	10,291	EA	Plant Selection - DEEPOT D40
3	5,700	EA	Plant Selection - 10 C.I. Plug
4	449	CY	WOOD STRAND MULCH

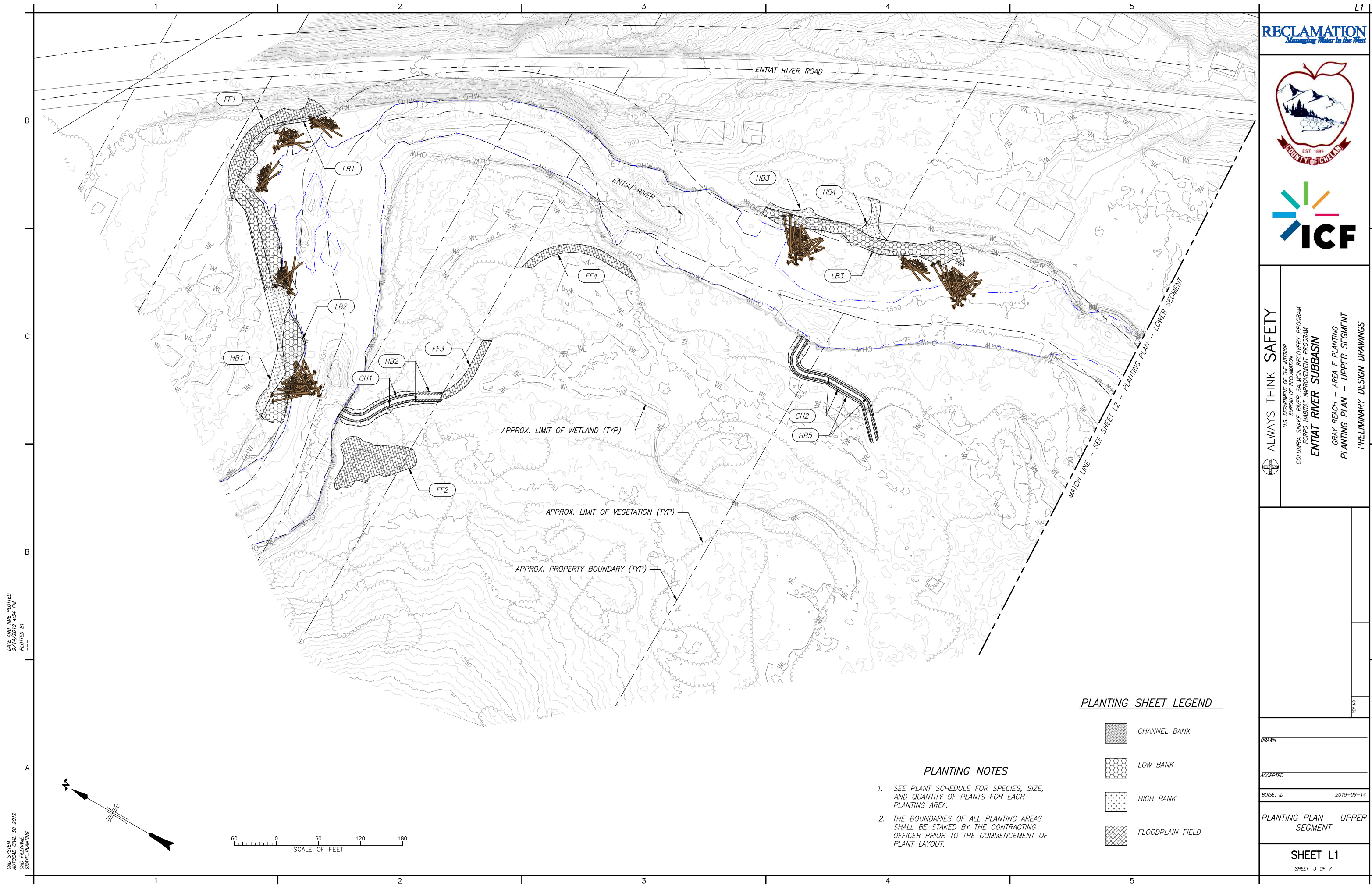


ALWAYS THINK SAFETY
 U.S. DEPARTMENT OF THE INTERIOR
 BUREAU OF RECLAMATION
 COLUMBIA SNAKE RIVER SALMON RECOVERY PROGRAM
 FORPS HABITAT IMPROVEMENT PROGRAM
ENTIAT RIVER SUBBASIN
 GRAY REACH - AREA F PLANTING
GENERAL NOTES & SUMMARY OF QUANTITIES
 PRELIMINARY DESIGN DRAWINGS

DRAWN
 ACCEPTED
 BOISE, ID 2019-09-14
GENERAL NOTES & SUMMARY OF QUANTITIES
SHEET G2
 SHEET 2 OF 7

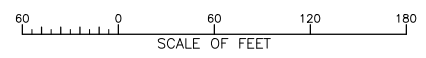
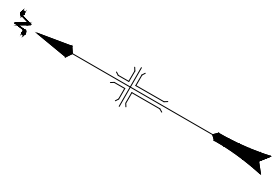
DATE AND TIME PLOTTED
9/23/2019 10:33 PM
PLOTTED BY

CAD SYSTEM
2015
CAD FILENAME
GRAY_PLANTING_COVER



DATE AND TIME PLOTTED
 DATE AND TIME PLOTTED
 PLOTTED BY

CAD SYSTEM
 CAD FILENAME
 CAD PLOTTING



PLANTING NOTES

- SEE PLANT SCHEDULE FOR SPECIES, SIZE, AND QUANTITY OF PLANTS FOR EACH PLANTING AREA.
- THE BOUNDARIES OF ALL PLANTING AREAS SHALL BE STAKED BY THE CONTRACTING OFFICER PRIOR TO THE COMMENCEMENT OF PLANT LAYOUT.

PLANTING SHEET LEGEND

	CHANNEL BANK
	LOW BANK
	HIGH BANK
	FLOODPLAIN FIELD

1
2
3
4
5

D
C
B
A

1
2
3
4
5

A
B
C
D

L1
L1

RECLAMATION
Managing Water in the West

ALWAYS THINK SAFETY

U.S. DEPARTMENT OF THE INTERIOR
 BUREAU OF RECLAMATION
 COLUMBIA SNAKE RIVER SALMON RECOVERY PROGRAM
 CORPS HABITAT IMPROVEMENT PROGRAM
ENTIAAT RIVER SUBBASIN
 GRAY REACH - AREA F PLANTING
 PLANTING PLAN - UPPER SEGMENT
 PRELIMINARY DESIGN DRAWINGS

DRAWN

ACCEPTED


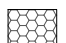
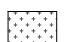

BOISE, ID

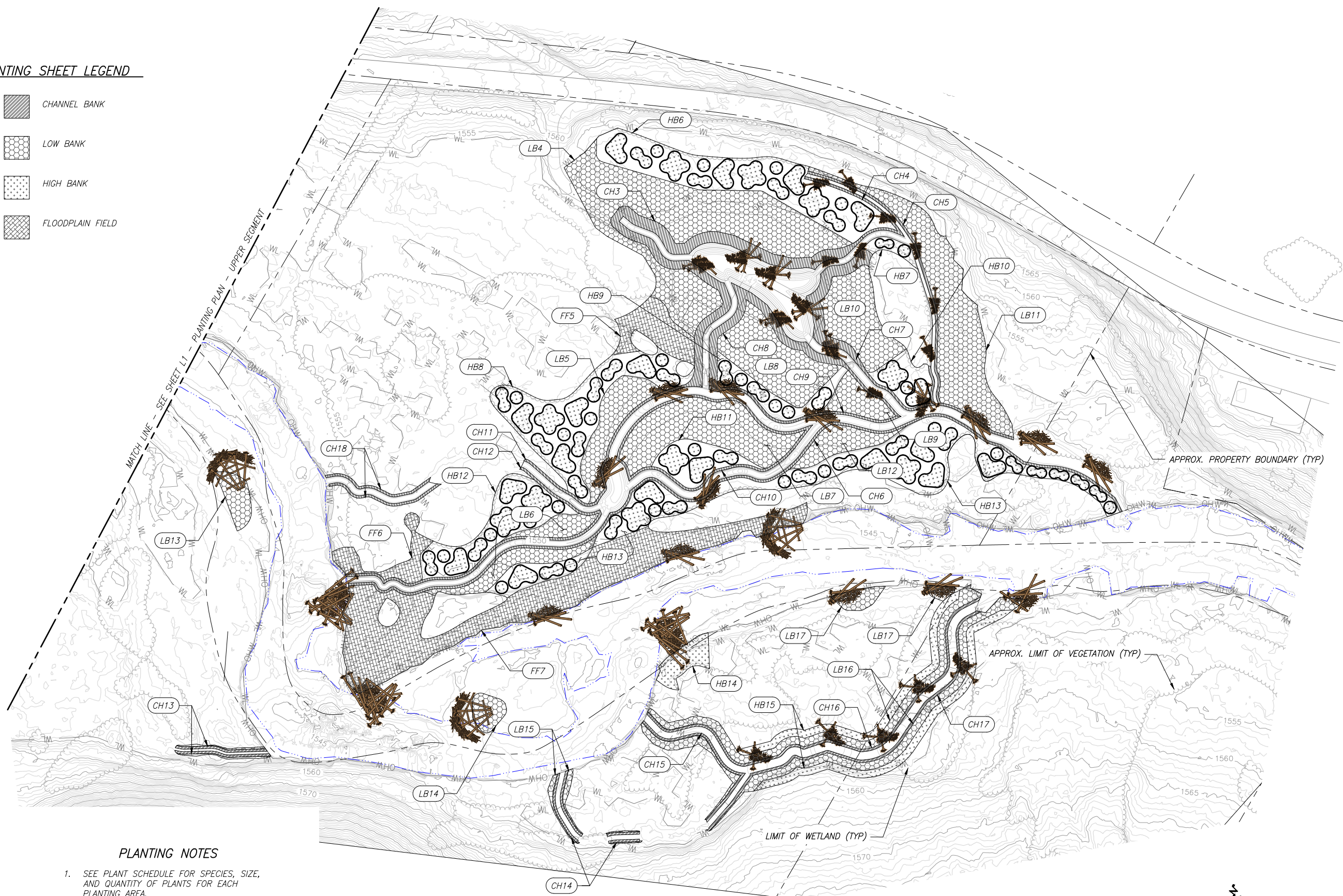
2019-09-14

PLANTING PLAN - UPPER SEGMENT

SHEET L1
SHEET 3 OF 7

PLANTING SHEET LEGEND

-  CHANNEL BANK
-  LOW BANK
-  HIGH BANK
-  FLOODPLAIN FIELD



PLANTING NOTES

1. SEE PLANT SCHEDULE FOR SPECIES, SIZE, AND QUANTITY OF PLANTS FOR EACH PLANTING AREA.
2. THE BOUNDARIES OF ALL PLANTING AREAS SHALL BE STAKED BY THE CONTRACTING OFFICER PRIOR TO THE COMMENCEMENT OF PLANT LAYOUT.
3. HIGH BANK PLANT COMMUNITIES SHALL BE PLANTED IN CLUMPS AS INDICATED ON THIS SHEET, AND AS DIRECTED BY THE CONTRACTING OFFICER.

DATE AND TIME PLOTTED
DATE AND TIME PLOTTED BY

CAD SYSTEM
CAD FILENAME
DRAWN BY



ALWAYS THINK SAFETY

U.S. DEPARTMENT OF THE INTERIOR
BUREAU OF RECLAMATION
COLUMBIA SNAKE RIVER SALMON RECOVERY PROGRAM
CORPS HABITAT IMPROVEMENT PROGRAM

ENTIAI RIVER SUBBASIN

GRAY REACH - PROJECT AREA F
PLANTING PLAN - LOWER SEGMENT
PRELIMINARY DESIGN DRAWINGS

DRAWN

ACCEPTED

BOISE, ID 2019-09-14

PLANTING PLAN - LOWER SEGMENT

SHEET L4
SHEET 4 OF 7

DATE AND TIME PLOTTED
 9/10/2019 10:54 AM
 PLOTTED BY

CAD SYSTEM
 30 2012
 CAD FILENAME
 GRAY_PLANTING

CHANNEL BANK PLANT SCHEDULE

AREA QUANTITIES

PLANT TYPE	ID	SPECIES NAME	COMMON NAME	SIZE	TOTAL QUANTITY	CH1	CH2	CH3	CH4	CH5	CH6	CH7	CH8	CH9	CH10	CH11	CH12	CH13	CH14	CH15	CH16	CH17	CH18	
DECIDUOUS TREES																								
	SAEX	SALIX EXIGUA	COYOTE WILLOW	DEEPOT D40	1756	51	72	408	32	77	181	161	187	33	96	43	77	38	43	37	92	80	48	
	SASI	SALIX SITCHENSIS	SITKA WILLOW	DEEPOT D40	1756	51	72	408	32	77	181	161	187	33	96	43	77	38	43	37	92	80	48	

LOW BANK PLANT SCHEDULE

AREA QUANTITIES

PLANT TYPE	ID	SPECIES NAME	COMMON NAME	SIZE	TOTAL QUANTITY	LB1	LB2	LB3	LB4	LB5	LB6	LB7	LB8	LB9	LB10	LB11	LB12	LB13	LB14	LB15	LB16	LB17	LB18	
DECIDUOUS TREES																								
	SAEX	SALIX EXIGUA	COYOTE WILLOW	DEEPOT D40	411	76	11	19	76	15	15	34	26	8	22	46	9	6	5	2	36	4	1	
	SAEX	SALIX EXIGUA	COYOTE WILLOW	TREEPOT TP414	411	76	11	19	76	15	15	34	26	8	22	46	9	6	5	2	36	4	1	
	SASI	SALIX SITCHENSIS	SITKA WILLOW	DEEPOT D40	411	76	11	19	76	15	15	34	26	8	22	46	9	6	5	2	36	4	1	
	SASI	SALIX SITCHENSIS	SITKA WILLOW	TREEPOT TP414	411	76	11	19	76	15	15	34	26	8	22	46	9	6	5	2	36	4	1	
DECIDUOUS SHRUBS																								
	SPDO	SPIRAEA DOUGLASII	DOUGLAS SPIRAEA	DEEPOT D40	1538	284	43	70	284	58	57	126	99	30	81	171	34	22	17	8	135	14	5	
HERBACEOUS																								
	CALE	CAREX LENTICULARIS	KELLOG'S SEDGE	10 C.I. PLUG	2137	395	60	97	395	80	79	175	138	41	113	237	48	30	24	11	188	19	7	
	CAUN	CAREX UNILATERALIS	MACK. LATERAL SEDGE	10 C.I. PLUG	1426	263	40	65	263	54	53	117	92	27	75	158	32	20	16	8	125	13	5	
	SCMI	SCIRPIS MICROCARPUS	PANICLED BULRUSH	10 C.I. PLUG	2137	395	60	97	395	80	79	175	138	41	113	237	48	30	24	11	188	19	7	

HIGH BANK PLANT SCHEDULE

AREA QUANTITIES

PLANT TYPE	ID	SPECIES NAME	COMMON NAME	SIZE	TOTAL QUANTITY	HB1	HB2	HB3	HB4	HB5	HB6	HB7	HB8	HB9	HB10	HB11	HB12	HB13	HB14	HB15				
CONIFEROUS TREES																								
	PIPO	PINUS PONDEROSA	PONDEROSA PINE	TREEPOT TP414	112	3	1	-	1	1	22	1	19	5	4	6	11	30	2	6				
DECIDUOUS TREES																								
	ALIN	ALNUS INCANA	SPECKLED ALDER	TREEPOT TP414	100	2	1	-	1	1	19	1	17	5	4	5	10	27	2	5				
	BEOC	BETULA OCCIDENTALIS	WATER BIRCH	DEEPOT D40	72	2	1	-	-	1	14	1	12	3	3	4	7	19	1	4				
	POBA	POPULUS BALSAMIFERA SSP. TRICHOCARPA	BLACK COTTONWOOD	TREEPOT TP414	141	3	1	1	1	1	28	2	24	7	5	7	14	38	2	7				
	POTR	POPULUS TREMULOIDES	QUAKING ASPEN	TREEPOT TP414	85	2	1	-	1	1	17	1	14	4	3	4	9	23	1	4				
	SALU	SALIX LUCIDA SSP. LASIANDRA	PACIFIC WILLOW	DEEPOT D40	41	1	-	-	-	-	8	1	7	2	2	2	4	11	1	2				
	SALU	SALIX LUCIDA SSP. LASIANDRA	PACIFIC WILLOW	TREEPOT TP414	41	1	-	-	-	-	8	1	7	2	2	2	4	11	1	2				
DECIDUOUS SHRUBS																								
	COSE	CORNUS SERICEA	RED-OSIER DOGWOOD	DEEPOT D40	398	9	3	2	3	4	78	5	67	19	15	20	40	106	6	21				
	HODI	HOLIDISCUS DISCOLOR	OCEAN SPRAY	DEEPOT D40	455	10	4	2	3	4	89	6	77	21	17	23	46	122	7	24				
	ROWO	ROSA WOODSII	WOOD'S ROSE	DEEPOT D40	567	13	5	2	4	5	111	7	96	27	22	28	57	152	9	29				
	PHLE	PHILADELPHUS LEWISII	MOCK ORANGE	DEEPOT D40	567	13	5	2	4	5	111	7	96	27	22	28	57	152	9	29				
	SPDO	SPIRAEA DOUGLASII	DOUGLAS SPIRAEA	DEEPOT D40	1417	31	12	6	9	13	278	18	239	67	55	70	144	380	21	74				

PLANT SCHEDULE NOTES

- SEE SHEETS L1 AND L2 FOR LOCATION OF EACH PLANTING AREA.
- THE CONTRACTOR SHALL INSTALL CONTAINER PLANTS AND PLUGS AS SHOWN IN THE INSTALLATION DETAILS ON SHEET L5.
- PLANTS SHALL BE EVENLY DISTRIBUTED ACROSS EACH PLANTING AREA AND CLUSTERED WITH LIKE SPECIES.
- IF SUFFICIENT QUANTITIES OF TREEPOT TP414 CONTAINER PLANTS ARE NOT AVAILABLE THE CONTRACTING AGENCY MAY SUBSTITUTE DEEPOT D40 CONTAINER PLANTS FOR THOSE SPECIES TO MEET THE REQUIRED QUANTITIES OF PLANTS.



ALWAYS THINK SAFETY

U.S. DEPARTMENT OF THE INTERIOR
 BUREAU OF RECLAMATION
 COLUMBIA SNAKE RIVER SALMON RECOVERY PROGRAM
 FORPS HABITAT IMPROVEMENT PROGRAM

ENTIAI RIVER SUBBASIN

GRAY REACH - AREA F PLANTING
 PLANT SCHEDULE

PRELIMINARY DESIGN DRAWINGS

DRAWN

ACCEPTED

BOISE, ID 2019-09-14

PLANT SCHEDULE

SHEET L3

SHEET 5 OF 7



ALWAYS THINK SAFETY

U.S. DEPARTMENT OF THE INTERIOR
BUREAU OF RECLAMATION
COLUMBIA SNAKE RIVER SALMON RECOVERY PROGRAM
CORPS HABITAT IMPROVEMENT PROGRAM
ENTIAT RIVER SUBBASIN
GRAY REACH - AREA F PLANTING
PLANT SCHEDULE
PRELIMINARY DESIGN DRAWINGS

FLOODPLAIN FIELD PLANT SCHEDULE

PLANT TYPE	ID	SPECIES NAME	COMMON NAME	SIZE	TOTAL QUANTITY	AREA QUANTITIES						
						FF1	FF2	FF3	FF4	FF5	FF6	FF7
<i>CONIFEROUS TREES</i>												
	PIPO	PINUS PONDEROSA	PONDEROSA PINE	TREEPOT TP414	31	2	4	1	1	3	2	18
<i>DECIDUOUS TREES</i>												
	ALIN	ALNUS INCANA	SPECKLED ALDER	TREEPOT TP414	9	1	1	-	-	1	1	5
	AMAL	AMELANCHIER ALNIFOLIA	SERVICEBERRY	DEEPOT D40	122	8	15	4	6	11	8	70
	BEOC	BETULA OCCIDENTALIS	WATER BIRCH	TREEPOT TP414	43	3	5	1	2	4	3	25
	CRDO	CRATAEGUS DOUGLASII	BLACK HAWTHORNE	TREEPOT TP414	34	2	4	1	2	3	2	20
	PRVI	PRUNUS VIRGINIANA	CHOCHECHERRY	DEEPOT D40	85	6	10	2	4	8	5	50
	POBA	POPULUS BALSAMIFERA SSP. TRICHOCARPA	BLACK COTTONWOOD	TREEPOT TP414	21	1	3	1	1	2	1	12
	POTR	POPULUS TREMULOIDES	QUAKING ASPEN	TREEPOT TP414	17	1	2	-	1	2	1	10
	SALU	SALIX LUCIDA SSP. LASIANDRA	PACIFIC WILLOW	DEEPOT D40	17	1	2	-	1	2	1	10
	SALU	SALIX LUCIDA SSP. LASIANDRA	PACIFIC WILLOW	TREEPOT TP414	21	1	3	1	1	2	1	12
<i>DECIDUOUS SHRUBS</i>												
	COSE	CORNUS SERICEA	RED-OSIER DOGWOOD	DEEPOT D40	61	4	7	2	3	6	4	35
	RIAU	RIBIES AUREUM	GOLDEN CURRANT	DEEPOT D40	103	7	12	3	5	10	7	59
	RONU	ROSA NUTKANA	NOOTKA ROSE	DEEPOT D40	172	12	21	5	8	16	11	99
	SASC	SALIX SCOULERIANA	SCOULER'S WILLOW	DEEPOT D40	85	6	10	2	4	8	5	50
	SASC	SALIX SCOULERIANA	SCOULER'S WILLOW	TREEPOT TP414	85	6	10	2	4	8	5	50
	SYAL	SYMPHORICARPOS ALBUS	SNOWBERRY	DEEPOT D40	257	18	31	7	12	24	16	149

PLANT SCHEDULE NOTES

- SEE SHEETS L1 AND L2 FOR LOCATION OF EACH PLANTING AREA.
- THE CONTRACTOR SHALL INSTALL CONTAINER PLANTS AND PLUGS AS SHOWN IN THE INSTALLATION DETAILS ON SHEET L5.
- PLANTS SHALL BE EVENLY DISTRIBUTED ACROSS EACH PLANTING AREA AND CLUSTERED WITH LIKE SPECIES.
- IF SUFFICIENT QUANTITIES OF TREEPOT TP414 CONTAINER PLANTS ARE NOT AVAILABLE THE CONTRACTING AGENCY MAY SUBSTITUTE DEEPOT D40 CONTAINER PLANTS FOR THOSE SPECIES TO MEET THE REQUIRED QUANTITIES OF PLANTS.

DATE AND TIME PLOTTED
DATE AND TIME PLOTTED BY

CAD SYSTEM
CAD FILENAME
CAD PLANTING

DRAWN

ACCEPTED

BOISE, ID 2019-09-14

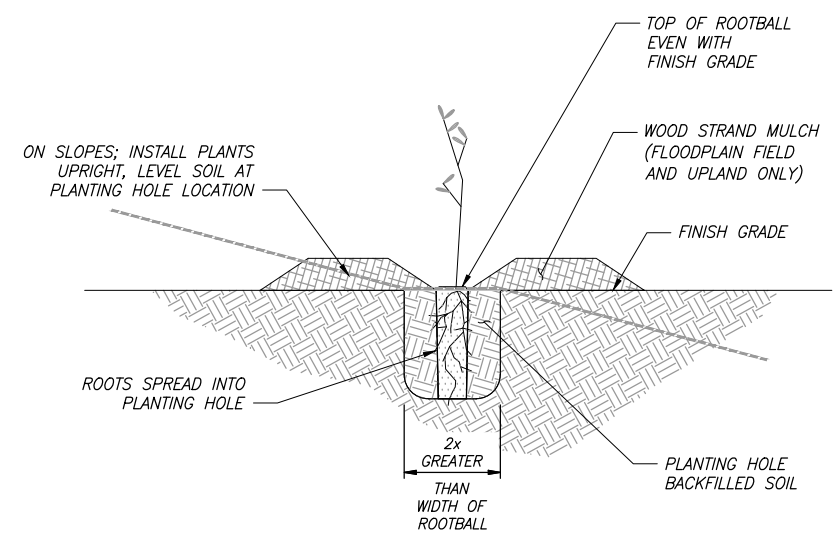
PLANT SCHEDULE

SHEET L4
SHEET 6 OF 7

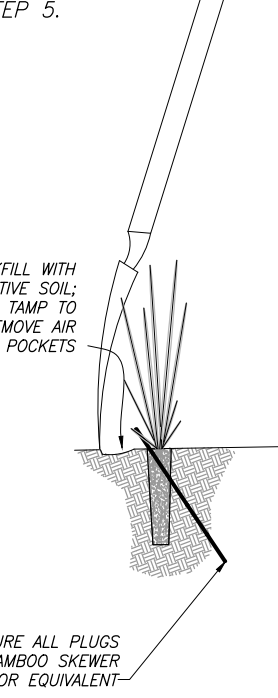
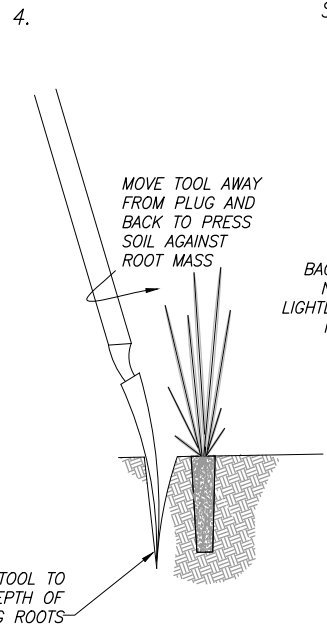
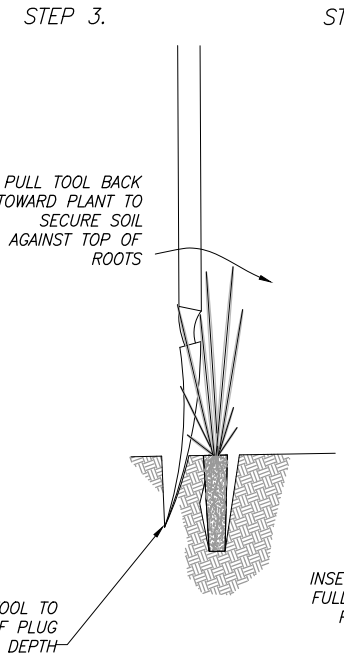
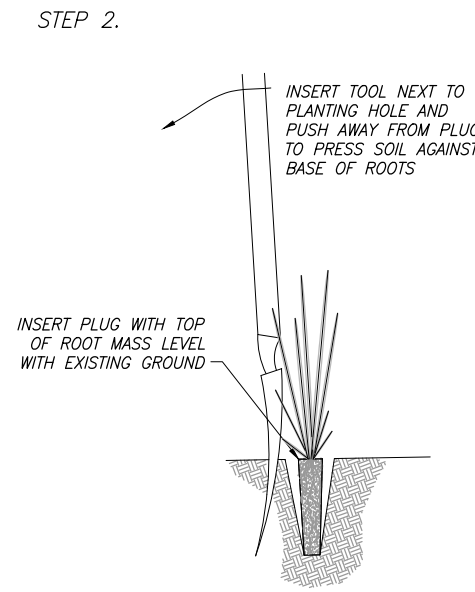
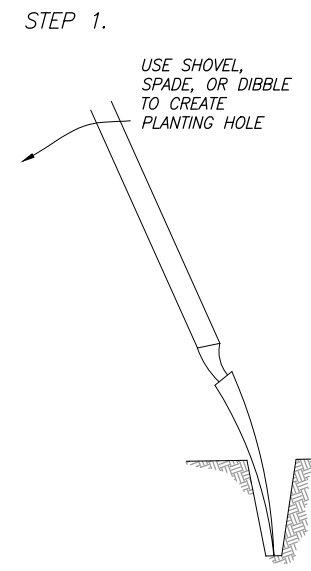


CONTAINER PLANT INSTALLATION NOTES

1. ALL CONTAINER PLANTS SHALL BE PROPAGATED FROM SEED OR PLANT MATERIAL COLLECTED FROM WITHIN THE ENTIAT WENATCHEE OR METHOW RIVER BASIN.
2. PRIOR TO INSTALLATION OF CONTAINER PLANT, CLEANLY PRUNE ANY BROKEN BRANCHES AND SCARIFY OUTER 1" OF ROOTBALL. CLEANLY PRUNE BROKEN, DEAD, OR DISEASED ROOTS. ROOTBOUND PLANTS SHALL BE REJECTED.
3. EXCAVATE CIRCULAR PLANTING HOLE WITH VERTICAL SIDES. SCARIFY SIDES AND BOTTOM OF PLANTING HOLE.
4. PLACE ROOTBALL ON UNDISTURBED NATIVE SOIL AT BASE OF PLANTING HOLE AND SPREAD ROOTS OUT TO SIDES OF HOLE. CLEANLY TRIM ANY ROOTS THAT ARE TOO LONG TO LAY STRAIGHT IN PLANTING HOLE. PLANTS SHALL BE UPRIGHT, PLUMB, AND TOP OF ROOTBALL SHALL BE EVEN WITH FINISH GRADE. WHEN PLANTING ON SLOPES, CREATE LEVEL PLANTING SURFACE TO ENSURE COVER OF ROOTS ON DOWNHILL SIDE OF PLANT.
5. BACKFILL PLANTING HOLE WITH SOIL EXCAVATED FROM PLANTING HOLE AND TAMP SOIL AROUND ROOTS. ANY TRASH OR DEBRIS FOUND IN EXCAVATED SOIL SHALL NOT BE USED TO BACKFILL THE PLANTING HOLE. BACKFILL SOIL SHALL MAKE GOOD CONTACT WITH THE ROOTBALL, LEAVING NO VOIDS.
6. IN CLUMPED HIGH BANK AND FLOODPLAIN FIELD PLANTING AREAS, ALL PLANTS SHALL BE SURROUNDED BY A 3' DIAMETER 4" DEEP RING OF WOOD CHIP MULCH. TAPER MULCH NEAR PLANT BASE TO ENSURE THAT THE WOOD STRAND MULCH DOES NOT MAKE CONTACT WITH PLANT STEM. TAPER MULCH OUTSIDE 3' DIAMETER TO MEET GRADE AT MULCH ANGLE OF REPOSE.
7. WITHIN 4 HOURS OF PLANT INSTALLATION, THOROUGHLY WATER IN EACH INSTALLED PLANT.



1 CONTAINER PLANT INSTALLATION
NOT TO SCALE



PLUG INSTALLATION NOTES

1. USE A SHOVEL, SPADE OR DIBBLE TO CREATE A PLANTING HOLE LARGE ENOUGH TO ACCOMMODATE THE ROOT MASS AND SOIL OF THE PLUG WITHOUT BENDING ROOTS AND SUCH THAT THE TOP OF THE ROOT MASS CAN BE PLACED LEVEL WITH THE EXISTING GROUND.
2. PLACE THE PLUG INTO THE PLANTING HOLE WITH THE TOP OF THE ROOT MASS LEVEL WITH EXISTING GROUND. INSERT TOOL NEXT TO THE PLANTING HOLE TO THE DEPTH OF THE PLANTING HOLE. PUSH TOOL AWAY FROM PLANTING HOLE TO MOVE SOIL AGAINST THE BASE OF THE PLUG'S ROOT MASS.
3. INSERT TOOL TO HALF OF PLUG'S ROOT DEPTH. PULL TOOL TOWARD THE PLANTING HOLE TO SECURE SOIL AGAINST THE TOP OF THE ROOTS.
4. INSERT TOOL TO FULL DEPTH OF PLUG ROOTS. MOVE TOOL AWAY FROM PLANTING HOLE AND BACK TOWARD PLANTING HOLE TO PRESS SOIL AGAINST ROOT MASS.
5. BACKFILL WORK HOLE WITH NATIVE SOIL. REPEAT ON OTHER SIDES OF PLUG AS NEEDED TO ENSURE NO VOIDS AROUND THE ROOT MASS.
6. SECURE PLUG WITH A BAMBOO SKEWER, OR BIODEGRADABLE EQUIVALENT, THROUGH THE TOP OF THE ROOT MASS AND INTO THE NATIVE SOIL.

2 PLUG INSTALLATION
NOT TO SCALE

DATE AND TIME PLOTTED
DATE AND TIME PLOTTED BY

CAD SYSTEM
CAD FILENAME
DRAWING

ALWAYS THINK SAFETY

U.S. DEPARTMENT OF THE INTERIOR
BUREAU OF RECLAMATION
COLUMBIA SNAKE RIVER SALMON RECOVERY PROGRAM
CORPS HABITAT IMPROVEMENT PROGRAM

ENTIAT RIVER SUBBASIN

GRAY REACH - AREA F PLANTING
PLANT INSTALLATION DETAILS

PRELIMINARY DESIGN DRAWINGS

DRAWN

ACCEPTED

BOISE, ID 2019-09-14

PLANT INSTALLATION
DETAILS

SHEET L5
SHEET 7 OF 7