

# Chelan County Climate Resilience Strategy Document

**Ben Silver & Lisa Grueter**

**BERK Consulting**

**August 12<sup>th</sup>, 2020**



# What is this Document?

---

This document is meant to help understand how climate change will impact Chelan County by answering the following questions:

1. Where are we heading based on current trends and projections?
2. What does that mean for commerce, communities, residents of Chelan County as well as visitors?
3. What are steps Chelan County and the greater community can take to build climate resilience?

# What is this Document?

*Building climate resilience is...*

***“Being prepared for, and adapting to, current and future climate-related changes.”***

*–WA DNR Plan for Climate Resilience*

Document hopes to achieve two key benefits of county-wide climate resilience planning:

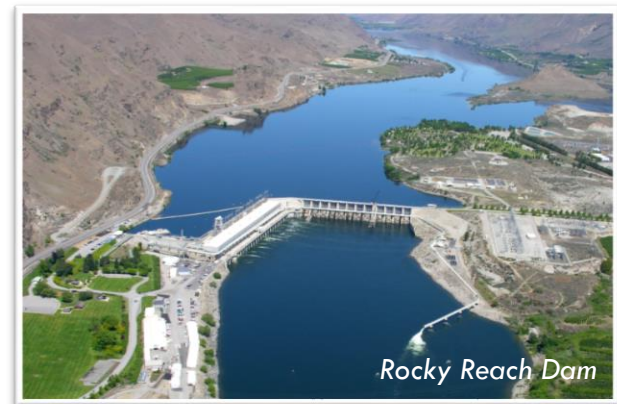
1. Improve communication and coordination for climate resilience efforts
2. Identify opportunities to advance projects of mutual benefit for organizations, people, and agencies in Chelan County

# Document Outline

---

Broken into four categories based on climate change impacts:

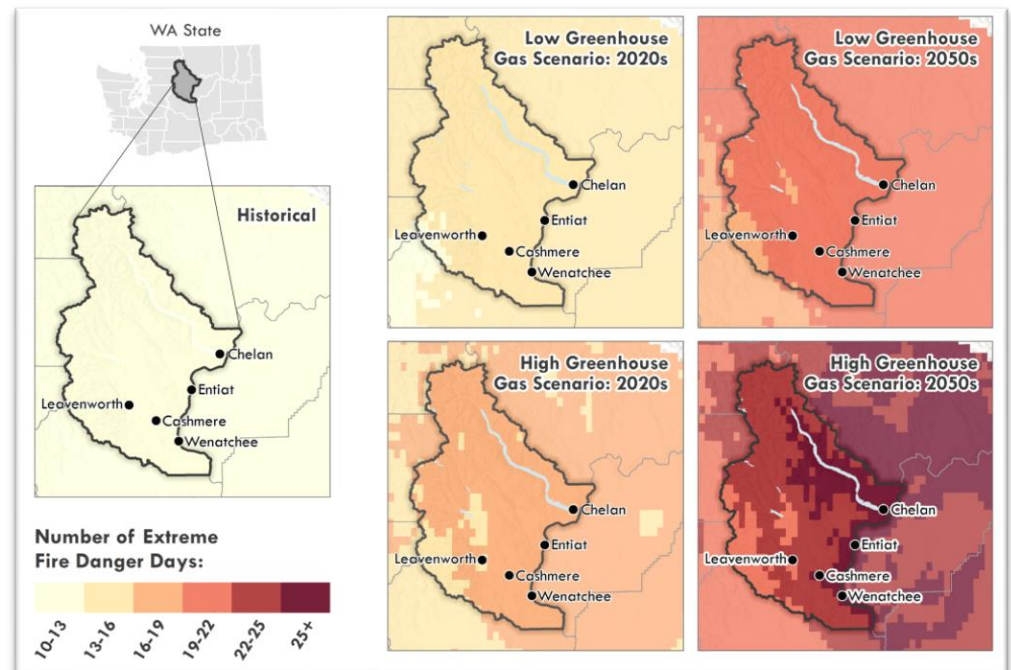
- Wildfire
- Snowpack & Instream Flow
- Flooding
- Water Supply



# Document Outline

In each of the four main impact areas, it discusses:

- Observed / Current Trends
- Projections
- Impacts
- Current Initiatives
- Key Climate Resilience Goals
- Resilience Strategies



Example Map in Document: Extreme Fire Danger Days, Chelan County

# Draft Resilience Strategies

---

The following slides present *draft* strategies for each section. Below are some notes about the strategies:

- Rooted in policies and plans already adopted in Chelan County
- Further developed in May 7<sup>th</sup>, 2020 climate resilience meeting
- Mirror and build upon regionwide climate resilience strategies
- Additional details provided in the draft strategy document, including status, identification of key partners, and general cost estimates

# Wildfire Resilience Strategies

---

- Build awareness and preparedness of Chelan County communities
- Coordinate and improve emergency preparedness systems, particularly early detection
- Develop fire safe places in fire prone areas with wildland urban interface policies and codes
- Create Fire Adapted Communities
- Protect critical facilities (also see flooding)
- Coordinate ecological recovery programs for areas subject to fire
- Monitor exotic and invasive species on resource and natural lands and prioritize protection and enhancement of such areas
- Continue to build partnerships across agencies to monitor and respond to climate changes and vulnerabilities in forested and shrub-steppe lands

# Snowpack/Instream Flow Resilience Strategies

---

- Encourage watershed-scale community building to adapt to changing instream flow and snowpack within the watershed
- Promote and encourage water efficiency and conservation
- Reduce impacts of climate change to aquatic systems through stream-habitat improvement and connectivity



# Flooding Resilience Strategies

---

- Improve flood warning and information dissemination
- Evaluate and improve stormwater management and infrastructure for high-intensity rainfall events
- Protect and upgrade or relocate critical facilities and locations vulnerable to flooding
- Revise transportation infrastructure
- Replant bare, disturbed, and recently burned areas to increase infiltration and slow movement of water


# Water Supply Resilience Strategies

---

- Develop rural water management through water budgets, exempt well tracking, voluntary metering, and water banks, or other measures
- Promote increased water storage solutions that help agricultural producers adapt to changing conditions and decrease production losses due to lack of water availability
- Drought planning to increase water conservation, and build awareness around individual risk from drought

# Process Moving Forward

- Gather feedback in breakout groups
- Gather feedback via survey for the next two weeks
- Incorporate feedback and produce final strategy document, to be presented in November 2020



**Chelan County Climate Resiliency Strategy**  
DRAFT AUGUST 2020

**COUNTY OF CHELAN**

## Introduction

In 2019, Chelan County began engagement with local and state partners aiming to build resilience to the impacts climate change in the county. A core planning and funding group has been leading this effort, and is comprised of Chelan County Natural Resources, Chelan County Public Utility District, Washington State Department of Natural Resources, and the University of Washington Climate Impacts Group. This document is a result of continued meeting of the core planning group, multiple community workshops, and community engagement throughout 2019 and 2020, and seeks to build a foundation for future climate resilience and adaptation work in Chelan County.

Various initiatives in Chelan County are underway to mitigate climate change impacts, and they are all at different stages of action. This document is an information source for the impacts of climate change in Chelan County, a summary of many of those initiatives already underway, and a forward-looking set of strategies for building climate resilience and creating adaptation actions within the community.

What does building climate resilience mean? The Washington State Department of Natural Resources' (DNR) Plan for Climate Resilience defines it as: **"Being prepared for, and adapting to, current and future climate-related changes."** In alignment with DNR's definition, this document attempts to answer these key driving questions:

- Where we are heading based on historic trends and looking forward?
- What does that mean for life in Chelan County?
- What are steps Chelan County and the greater community can take to build climate resiliency?

# Questions?

---