

Central Washington Initiative

Resilient Landscapes, Resilient Communities



*Implementing the
Forest Service 10-year*

Wildfire Crisis Strategy



Central Washington Initiative

- For the past 20-years, **wildfires have grown in size, duration, and destructivity** due to accumulating fuels, a warming climate, and expanding development in the WUI.
- Our new management paradigm builds on the **Cohesive Strategy**, including efforts to create fire-adapted communities and promote cross-boundary treatments.
- An **all hands, all lands** initiative to implement the Wildfire Crisis Strategy, funded by **historic investments** through the Bipartisan Infrastructure Law and Inflation Reduction Act

WILDFIRE CRISIS

s t r a t e g y

CONFRONTING THE WILDFIRE CRISIS

The Forest Service wildfire crisis strategy combines an historic investment from congressional funding with years of scientific research and planning into a national effort that will dramatically increase the scale of forest health treatments.



+20
MILLION

Treating up to an additional 20 million acres of National Forest System lands.

+30
MILLION

Treating up to an additional 30 million acres of other Federal, State, Tribal, and private lands.

10
YEARS

Developing a plan for long-term maintenance beyond the 10 years.

Central Washington Initiative

is
1 of 21

April 2022

Initial Investment Landscapes (2022)

Others:

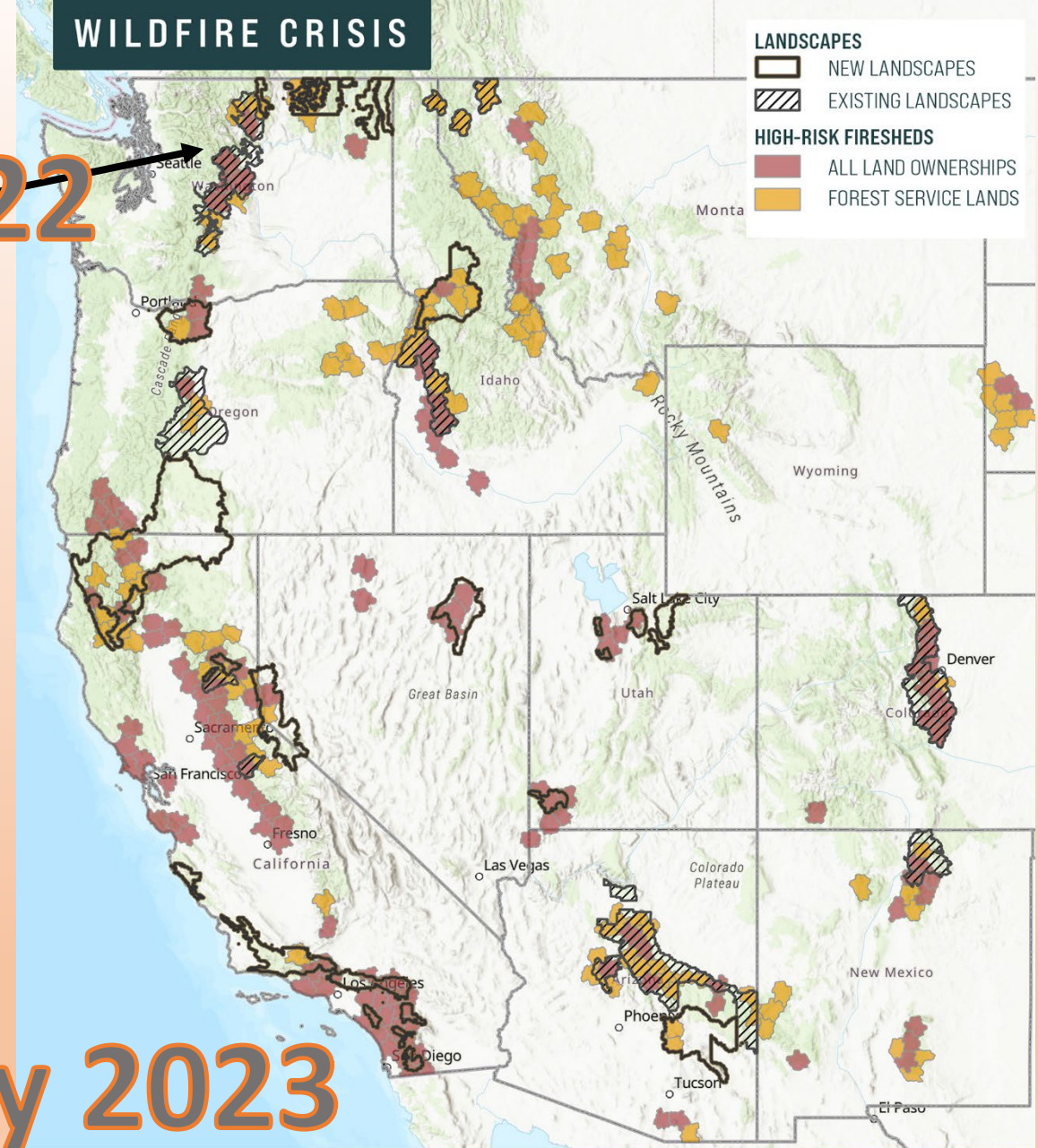
- Central Oregon
- Arizona (2)
- California (2)
- Colorado
- Idaho
- Montana
- New Mexico

Additional 11 Landscapes (2023)

- Washington: Colville
- Oregon: Mt Hood & Fremont-Winema
- Arizona (1)
- California (3)
- Idaho (1)
- Nevada (1)
- Utah (2)

January 2023

WILDFIRE CRISIS



MOVING FORWARD

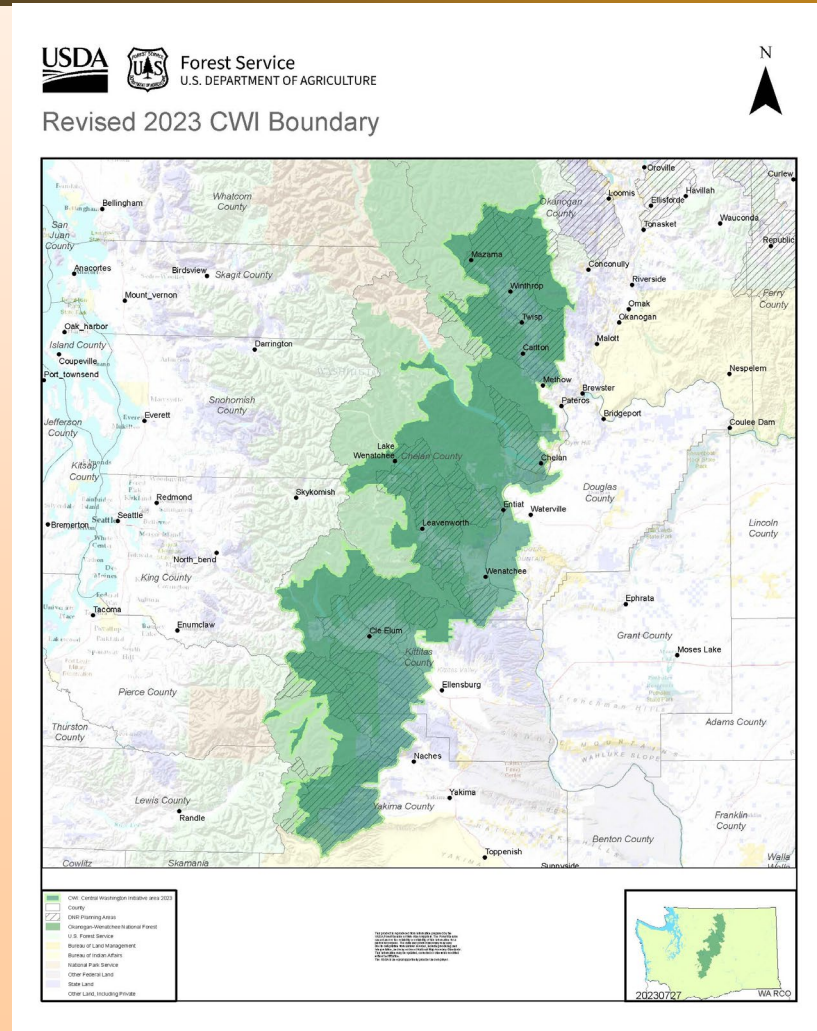
<https://www.fs.usda.gov/managing-land/wildfire-crisis>



Central Washington Initiative

Resilient Landscapes, Resilient Communities

- 3.1 million acre landscape
 - 2.1 million ac National Forest
 - 1.1 million acres state, tribal, private and other lands
- Four counties in Central WA:
 - Chelan, Kittitas, Okanogan, Yakima
- Six high-risk firesheds:
 - American River, Chiwaukum, Cle Elum, Leavenworth, Twisp, Wenatchee

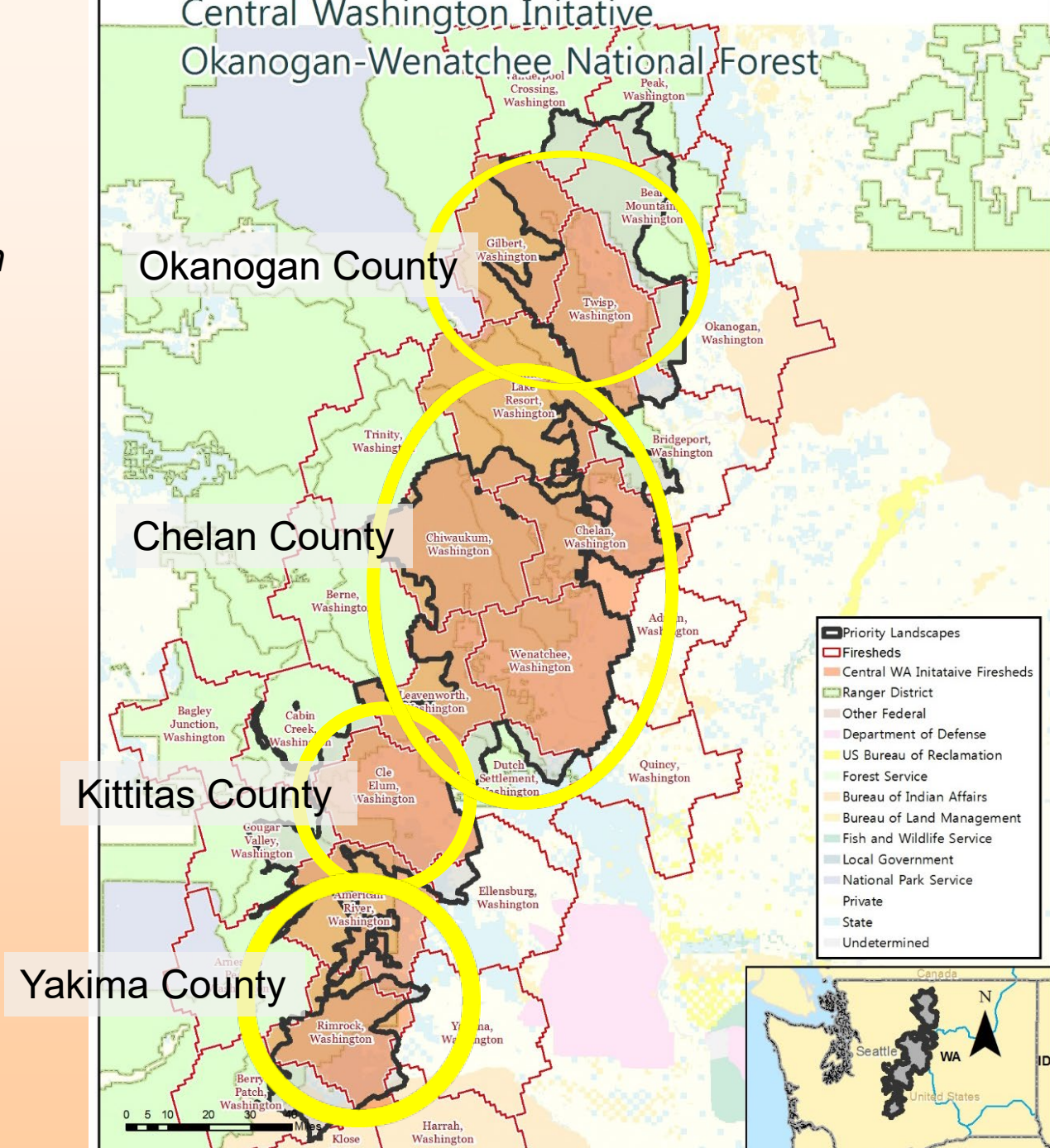


Firesheds

Landscapes of about 250,000 acres in which an ignition can spread and expose communities to wildfire

Priority Firesheds - Highest Risk:

- Twisp
- Chiwaukum
- Wenatchee
- Leavenworth
- Cle Elum
- American River



Firesheds and their communities within CWI

| Fireshed | Communities | County | Ranger District |
|-------------------|--|------------------|----------------------------|
| Leavenworth* | Leavenworth and Peshastin | Chelan, Kittitas | Wenatchee River |
| Chiwaukum* | Chumstick, Plain, Winton, Coles Corner, and Lake Wenatchee | Chelan | Wenatchee River |
| Cle Elum* | Cle Elum and Easton | Kittitas | Cle Elum |
| Twisp* | Twisp, Winthrop, Carlton, and Methow | Okanogan | Methow Valley |
| American River* | Nile, Cliffdell, and Goose Prairie | Yakima | Naches |
| Wenatchee* | Wenatchee, Sunnyslope, Rock Island, Cashmere, Dryden, Orondo, and Entiat | Chelan | Entiat and Wenatchee River |
| Chelan | Chelan, Manson, Chelan Falls, Waterville, and Ardenvoir | Chelan | Chelan and Entiat |
| Domke Lake Resort | Holden and Lucerne | Chelan | Chelan |
| Gilbert | Mazama | Okanogan | Methow Valley |
| Rimrock | Rimrock and Silver Beach | Yakima | Naches |

*Wildfire Crisis Strategy High Priority Firesheds

Central Washington Initiative

Resilient Landscapes, Resilient Communities

Goal: The CWI will implement the Wildfire Crisis Strategy and National Cohesive Wildland Fire Management Strategy on the CWI landscape. The CWI will identify and implement work to **meaningfully change the trajectory of wildfire risk** to communities and resources and promote forest health and resilience, with an extensive network of ongoing and new partnerships.



Central Washington Initiative

Resilient Landscapes, Resilient Communities

Building resilience in a changing climate includes managing landscapes to receive natural disturbances, such as wildfire through:

- Thinning
- Prescribed burning
- Landscape restoration treatments



Central Washington Initiative

Resilient Landscapes, Resilient Communities



Visit our website for additional
information or to sign up for
the mailing list.

<http://www.fs.usda.gov/goto/cwi>