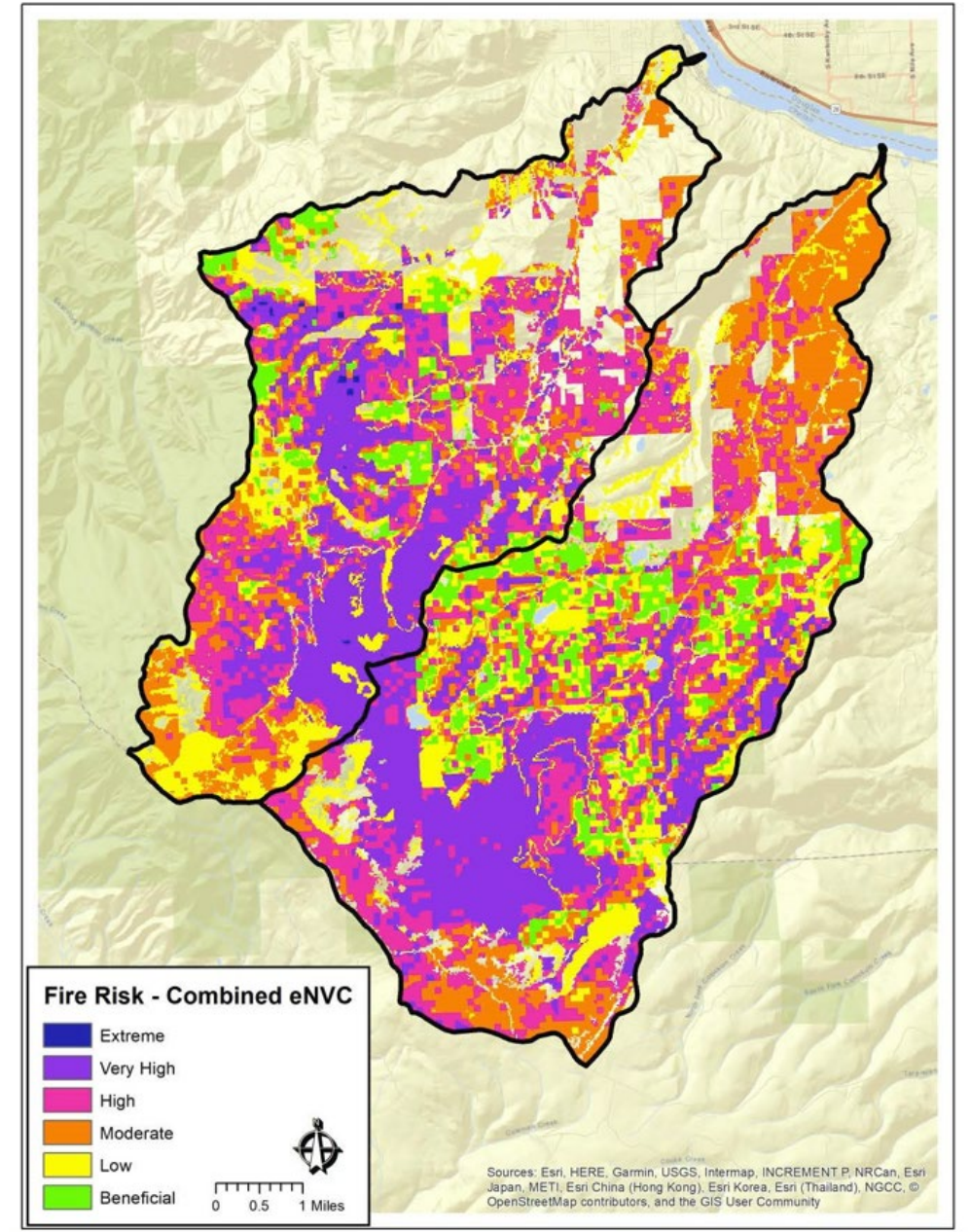


Collaboration and the Landscape Evaluation Process

Building Momentum and Partnerships

2019 Stemilt-Squilchuck Landscape Evaluation Process

- 2018 DNR Priority Planning Area
- Stemilt Partnership Collaborative
- Landscape Evaluation completed by Washington Conservation Science Institute
- Developed with partner input and coordination



Stemilt-Squilchuck Landscape Evaluation Stakeholders

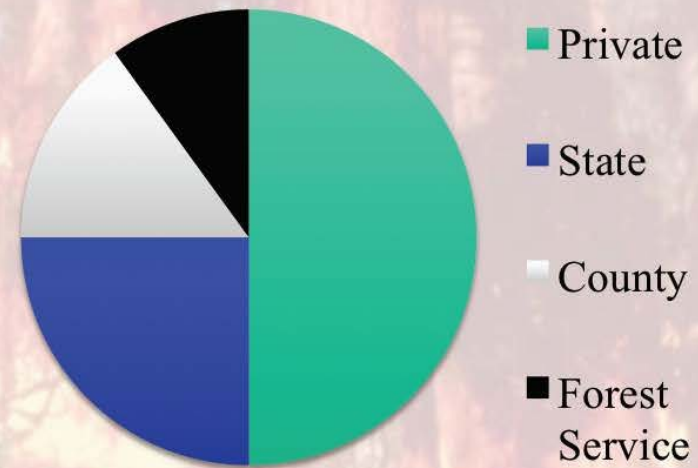
- WA State Parks
- WA DNR
- WDFW
- Mission Ridge
- Stemilt Partnership Steering Committee
- Irrigation Districts
- Boy Scouts of America
- Wenatchee Sportsman Association
- American Forest Management
- Wildlife Biologist
- Stemilt Growers



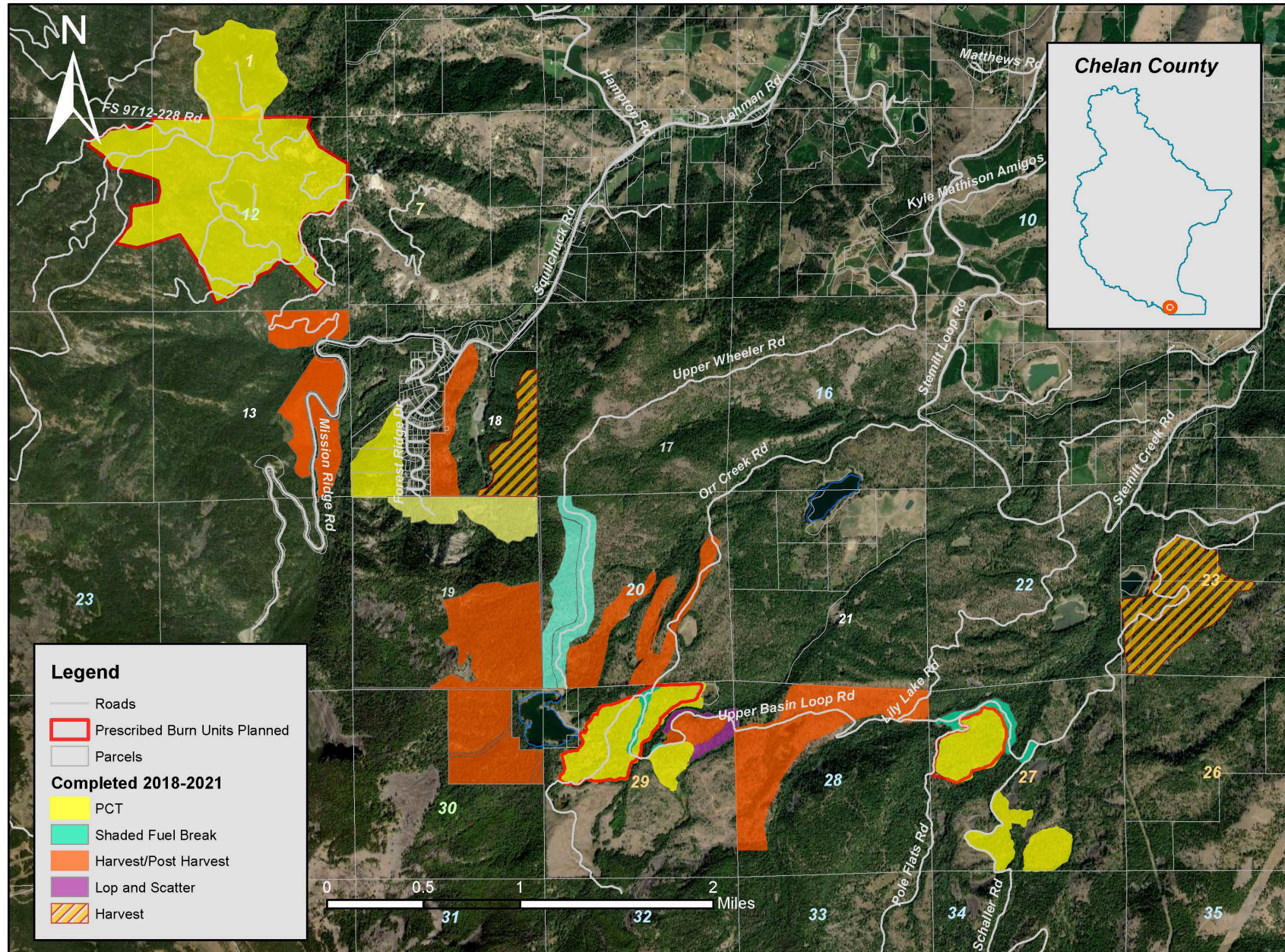
Restoration Treatment Opportunities

- WA DNR Funding 2018
- 9,200-13,600 acres
 - 6,200-7,900 change in forest structure
 - 3,000-5,700 maintain open forest condition and promote development of large trees

Treatment Opportunity



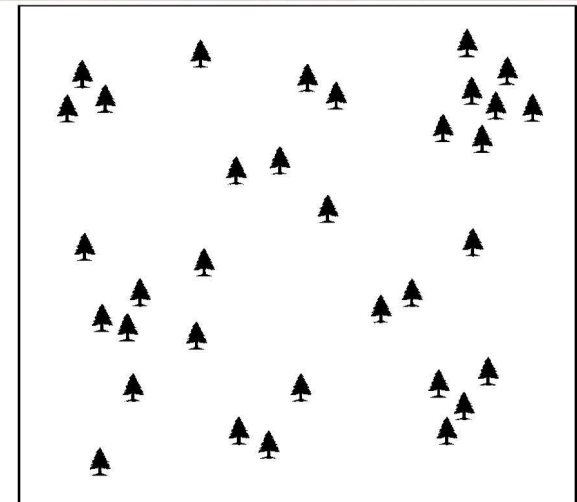
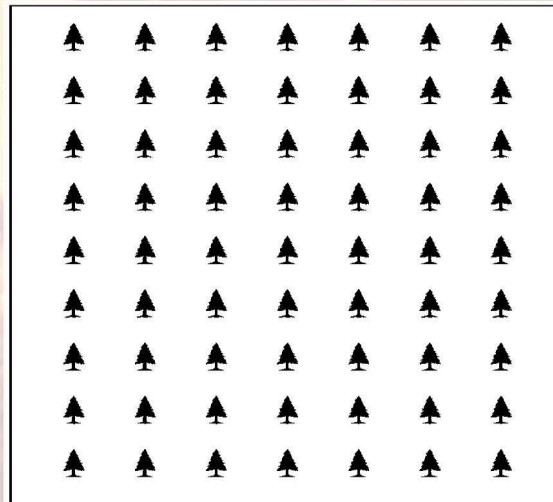
Stemilt Landscape Scale Restoration Area: Completed and Planned Units January 2023



Sections are labeled by section number and ownership; sections without ownership labels are privately held. Chelan County GIS 2021.

Landscape Diagnosis and Prescription

- Restore the abundance and spatial arrangement of large-old trees across the landscape
- Restore within-stand spatial variability
 - Individuals, Clumps, Openings (ICO)



Take-away:

Collaborative involvement can help bring climate resiliency into focus during the Landscape Evaluation process and ensure that all partners are prioritizing climate resilience in landscape-scale treatment plans

