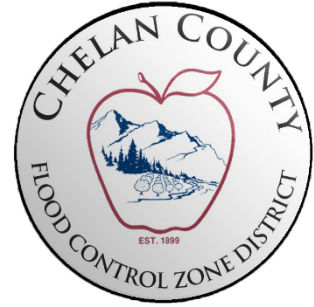


CHELAN COUNTY

FLOOD CONTROL ZONE DISTRICT

316 WASHINGTON STREET
SUITE 402
WENATCHEE, WASHINGTON 98801
TELEPHONE (509) 667-6415

ERIC PIERSON, PE
FCZD Administrator



FOR IMMEDIATE RELEASE

Date: 01/25/2021

Contact: Jill FitzSimmons, PIO

509-667-6415, jill.fizsimmons@co.chelan.wa.us

PRESS RELEASE

County seeks public input to help determine runoff relief measures in Ski Hill Basin area

LEAVENWORTH – The public is invited to participate in a survey that will be used in completing an analysis that will identify solutions to reduce the impacts of water runoff coming from the Ski Hill Basin in Leavenworth.

The analysis, paid for by the Chelan County Flood Control Zone District (FCZD), was started in 2019 and now has reached a critical point where input from the community is sought. Six alternatives have been identified that will mitigate, to various degrees and costs, flooding in the Ski Hill Basin. The public is asked to evaluate those alternatives.

Comments are being taken via a GIS StoryMap, which uses maps and descriptions to explain the water runoff problems in the Ski Hill Basin. It can be accessed online at the link below, or via the FCZD website (www.co.chelan.wa.us/flood-control-zone-district). **The FCZD asks people to complete the survey by Feb. 26.**

“We’re especially interested in hearing from those people living and working in the Ski Hill Basin and our partners in the Leavenworth community,” said Bob Bugert, Chelan County commissioner and FCZD supervisor. “Important mitigation efforts like these include gathering thoughts and opinions from the community.”

Located just north of the city of Leavenworth, the Ski Hill Basin stretches from the Cascade Range to the Wenatchee River. It includes national forest lands and the Ski Hill Lodge as well as residential and commercial areas. In most recent years, the area west of Titus Road has seen much residential development and growth.

In years past, basin homeowners have reported some flooding issues typically occurring during rapid snow melt in late winter and early spring. Water runoff in the basin also has overwhelmed county ditches and culverts, causing mud and debris to go across the road and impact traffic. The 2017 Comprehensive Flood Hazard Management Plan, also a project of the FCZD, identified Ski Hill as a top priority for flood mitigation efforts and called for an analysis of the basin to form an action plan for reducing flooding impacts to public and private property within Chelan County and the city limits of Leavenworth.

Resources:

[Ski Hill Basin Analysis webpage](#)
[StoryMap](#)

City of Leavenworth, Washington

- Home
- About Leavenworth
- City Government
- City Services
- Businesses
- I want to...

You are here → [Home](#) > [News and Notices](#) > [News](#) > [County seeks public input to help determine runoff relief measures in Ski Hill Basin area](#)

- Subscribe to City of Leavenworth Information Updates
- Essential Links**
- June 05, 2021**
 - [Agendas and Minutes](#)
 - [Bill Pay](#)
 - [City Administrator Message](#)
 - [City Calendar](#)
 - [City Code](#)
 - [City Council](#)
 - [City Directory / Contacts](#)
 - [Community Information](#)
 - [Community Pool](#)
 - [Employment Opportunities](#)
 - [GIS MAP/Permit Portal](#)
 - [Parks](#)
 - [Public Notices](#)

Documents
- Open in a New Window or Tab -

County seeks public input to help determine runoff relief measures in Ski Hill Basin area

Filed under [News](#), [Press Releases](#), [Public Notices](#), [Uncategorized](#) on January 26, 2021

**Chelan County – Flood Control Zone District
1/25/2021**

County seeks public input to help determine runoff relief measures in Ski Hill Basin area

LEAVENWORTH – The public is invited to participate in a survey that will be used in completing an analysis that will identify solutions to reduce the impacts of water runoff coming from the Ski Hill Basin in Leavenworth.

The analysis, paid for by the Chelan County Flood Control Zone District (FCZD), was started in 2019 and now has reached a critical point where input from the community is sought. Six alternatives have been identified that will mitigate, to various degrees and costs, flooding in the Ski Hill Basin. The public is asked to evaluate those alternatives.

Comments are being taken via a GIS StoryMap, which uses maps and descriptions to explain the water runoff problems in the Ski Hill Basin. It can be accessed online at the link below, or via the FCZD website (www.co.chelan.wa.us/flood-control-zone-district). The FCZD asks people to complete the survey by Feb. 26.

"We're especially interested in hearing from those people living and working in the Ski Hill Basin and our partners in the Leavenworth community," said Bob Bugert, Chelan County commissioner and FCZD supervisor. "Important mitigation efforts like these include gathering thoughts and opinions from the community."

Located just north of the city of Leavenworth, the Ski Hill Basin stretches from the Cascade Range to the Wenatchee River. It includes national forest lands and the Ski Hill Lodge as well as residential and commercial areas. In most recent years, the area west of Titus Road has seen much residential development and growth.

In years past, basin homeowners have reported some flooding issues typically occurring during rapid snow melt in late winter and early spring. Water runoff in the basin also has overwhelmed county ditches and culverts, causing mud and debris to go across the road and impact traffic. The 2017 Comprehensive Flood Hazard Management Plan, also a project of the FCZD, identified Ski Hill as a top priority for flood mitigation efforts and called for an analysis of the basin to form an action plan for reducing flooding impacts to public and private property within Chelan County and the city limits of Leavenworth.

Resources:
[Ski Hill Basin Analysis webpage](#)
[StoryMap](#)

FOR IMMEDIATE RELEASE Contact: Jill FitzSimmons, PIO Date: 01/25/2021
509-667-6415, jill.fitzsimmons@co.chelan.wa.us

[Download full press release](#)



[Return to Top of Page](#) ↑

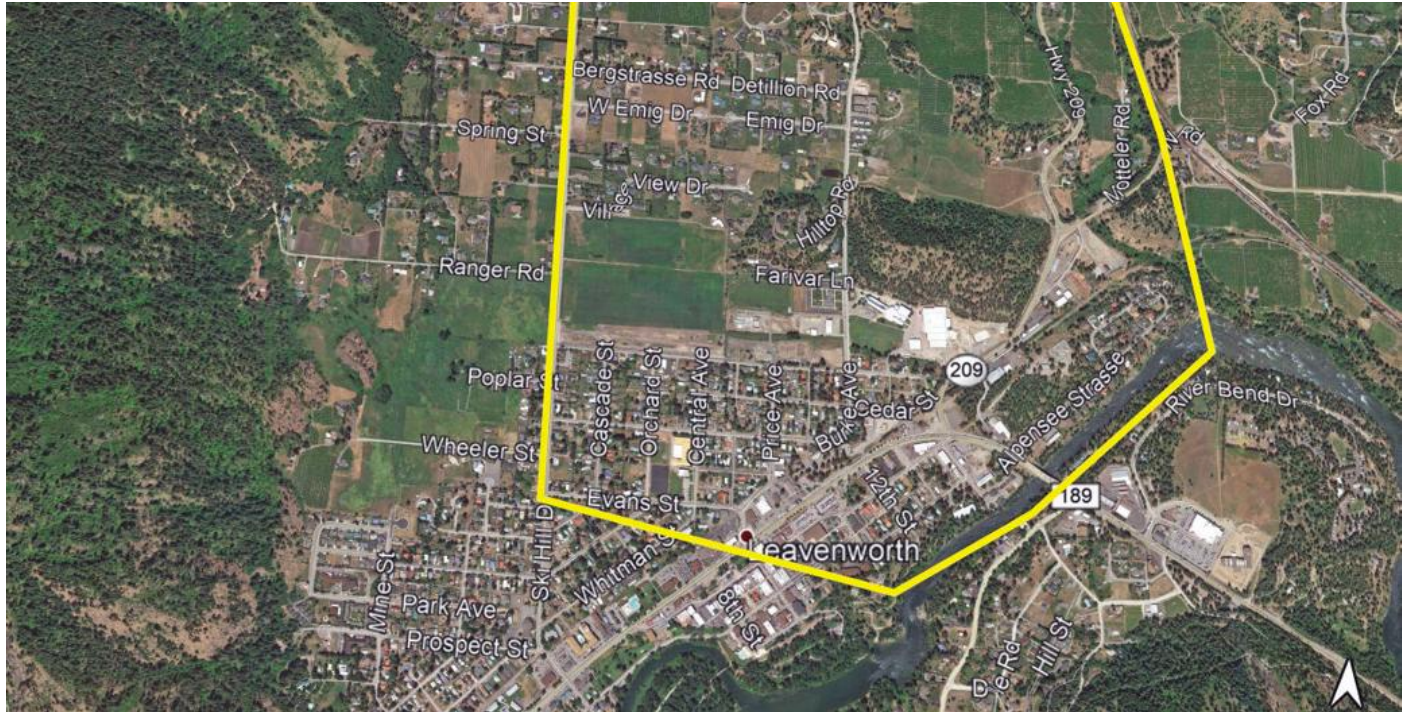
https://www.wenatcheeworld.com/news/where-will-the-ski-hill-runoff-water-go/article_65a94c8a-628e-11eb-97b6-2fdc39e1bf.html

Where will the Ski Hill runoff water go?

By Nevonne McDaniels

World staff writer

Jan 29, 2021



The Chelan County Flood Control Zone District is looking at a series of possible solutions for runoff from Ski Hill that has created issues for homeowners, especially during rapid snow melt in late winter and early spring. A survey asking for input is available at wwrld.us/3j3kFI4.

Provided map

LEAVENWORTH — Six options to prevent flooding in the Ski Hill Basin are being presented to the community in a survey form as part of a project being considered by the Chelan County Flood Control Zone District.

The alternatives, which range from doing nothing to piping water along Titus Road and across private and U.S. Forest Service land to a culvert under Chumstick Highway, are part of an analysis funded by the district aimed at reducing the impacts of water runoff from Ski Hill. Most of the proposed options address drainage issues along Titus and Detillion roads.

Comments are being taken online through Feb. 26 at wwrld.us/3j3kFI4. The site includes maps and descriptions to explain the water runoff problems in the Ski Hill Basin.

“We’re especially interested in hearing from those people living and working in the Ski Hill Basin and our partners in the Leavenworth community,” said Bob Bugert, Chelan County commissioner and flood control district supervisor. “Important mitigation efforts like these include gathering thoughts and opinions from the community.”

The Ski Hill Basin, north of the Leavenworth city limits, stretches from the Cascade Range to the Wenatchee River. It includes national forest lands, the Ski Hill Lodge, residential and commercial areas. The area west of Titus Road has seen much residential development and growth in recent years.

Flooding has occurred during rapid snow melt in late winter and early spring, causing ditches to overflow, pushing mud and debris across the road.

The flood control district has studied the issue since 2019. Ski Hill was identified as a priority for flood mitigation in the 2017 Comprehensive Flood Hazard Management Plan, also a project of the flood control district.

Ski hill runoff options

Here is a summary of the alternatives being considered on the survey. The specific costs of each has not been determined.

Alternative 1: No action. No new drainage features added, but on-going maintenance of the ditches and culverts will continue as necessary.

Alternative 2: Increase the size of the roadside ditches and culverts along Detillion and Titus roads, which will capture more runoff from uphill, particularly during the spring when ditches may be partially blocked by snow.

The ditch adjacent to Titus Road also may be improved to prevent erosion. All runoff would be directed to the channel shown as a green dashed line which drains into Chumstick Creek.

Alternative 3: In addition to Alternative 2 actions, it would add a pond near the Ski Hill parking lot and build larger swales along the north side of Titus Road between the existing culverts.

The pond would help store water and reduce runoff flowing along the north side of Titus Road. The swales would direct more water through culverts under Titus Road, keeping water from going over the road.

Alternative 4: Alternative 2 and 3, expanding the swale along Titus Road and adding a culvert along Titus, traveling east/west. It also would improve the Titus ditches and culverts north-to-south. The idea is to reduce flow into the orchard south of Ski Hill by directing more water toward the Titus side.

Alternative 5: All the features of Alternative 3, plus a new ditch, swale or pipe, from about midway on the east/west stretch of Titus Road south to Detillion Road, connecting to the improved ditch there.

Alternative 6: Add a pond at the Ski Hill parking lot and direct runoff to a new swale or pipe along the north side of Titus Road that would then continue across private and USFS land to a new culvert under Chumstick Highway. Permission from multiple landowners would be required.

Nevonne McDaniels

Reporter

Nevonne can be reached at (509) 664-7151 or mcdaniels@wenatcheeworld.com.