

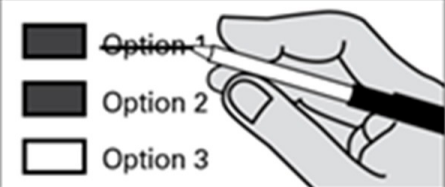
Instructions:

How to vote



Use a dark blue or black ink pen to completely fill in the box to the left of your choice. Vote for one in each race. If you vote for more than one, no votes will be counted for that race.

If you make a mistake



Draw a line through the entire candidate's name. Then you may make another choice.

Optional write-in



To vote for a candidate not listed for that race, fill in the box to the left of "write-in" and print the name on the dashed line.

i Who donates to campaigns?

View contributors for candidates and measures
Public Disclosure Commission
www.pdc.wa.gov
Toll Free (877) 601-2828

State Measures

Initiatives to the People

Initiative Measure No. 1433

Initiative Measure No. 1433 concerns labor standards. This measure would increase the state minimum wage to \$11.00 in 2017, \$11.50 in 2018, \$12.00 in 2019, and \$13.50 in 2020, require employers to provide paid sick leave, and adopt related laws.

Should this measure be enacted into law?

Yes
 No

Initiative Measure No. 1464

Initiative Measure No. 1464 concerns campaign finance laws and lobbyists. This measure would create a campaign-finance system; allow residents to direct state funds to candidates; repeal the non-resident sales-tax exemption; restrict lobbying employment by certain former public employees; and add enforcement requirements.

Should this measure be enacted into law?

Yes
 No

Initiative Measure No. 1491

Initiative Measure No. 1491 concerns court-issued extreme risk protection orders temporarily preventing access to firearms. This measure would allow police, family, or household members to obtain court orders temporarily preventing firearms access by persons exhibiting mental illness, violent or other behavior indicating they may harm themselves or others.

Should this measure be enacted into law?

Yes
 No

Initiative Measure No. 1501

Initiative Measure No. 1501 concerns seniors and vulnerable individuals. This measure would increase the penalties for criminal identity theft and civil consumer fraud targeted at seniors or vulnerable individuals; and exempt certain information of vulnerable individuals and in-home caregivers from public disclosure.

Should this measure be enacted into law?

Yes
 No

Initiatives to the Legislature

Initiative Measure No. 732

Initiative Measure No. 732 concerns taxes. This measure would impose a carbon emission tax on certain fossil fuels and fossil-fuel-generated electricity, reduce the sales tax by one percentage point and increase a low-income exemption, and reduce certain manufacturing taxes.

Should this measure be enacted into law?

Yes
 No

Initiative Measure No. 735

Initiative Measure No. 735 concerns a proposed amendment to the federal constitution. This measure would urge the Washington state congressional delegation to propose a federal constitutional amendment that constitutional rights belong only to individuals, not corporations, and constitutionally-protected free speech excludes the spending of money.

Should this measure be enacted into law?

Yes
 No

Advisory Votes

**Advisory Vote No. 14
House Bill 2768**

The legislature extended, without a vote of the people, the insurance premium tax to some insurance for stand-alone family dental plans, costing an indeterminate amount in the first ten years, for government spending.

This tax increase should be:

Repealed
 Maintained

**Advisory Vote No. 15
Second Engrossed Substitute
House Bill 2778**

The legislature imposed, without a vote of the people, certain limitations on the retail sales and use tax exemptions for clean alternative-fuel vehicles, costing \$2,000,000 in the first ten years, for government spending.

This tax increase should be:

Repealed
 Maintained

Proposed Amendment to the State Constitution

Senate Joint Resolution No. 8210

The legislature has proposed a constitutional amendment on the deadline for completing state legislative and congressional redistricting. This amendment would require the state redistricting commission to complete redistricting for state legislative and congressional districts by November 15 of each year ending in a one, 46 days earlier than currently required.

Should this constitutional amendment be:

Approved
 Rejected

Partisan Offices

Federal United States

President/Vice President

Hillary Clinton / Tim Kaine
Democratic Party Nominees

Donald J. Trump / Michael R. Pence
Republican Party Nominees

Alyson Kennedy / Osborne Hart
Socialist Workers Party Nominees

Gloria Estela La Riva / Eugene Puryear
Socialism & Liberation Party Nominees

Jill Stein / Ajamu Baraka
Green Party Nominees

Darrell L. Castle / Scott N. Bradley
Constitution Party Nominees

Gary Johnson / Bill Weld
Libertarian Party Nominees

Write-in:

Continue voting next side



Read: Each candidate for President and Vice President is the official nominee of a political party. For other partisan offices, each candidate may state a political party that he or she prefers. A candidate's preference does not imply that the candidate is nominated or endorsed by the party, or that the party approves of or associates with that candidate.

U.S. Senator

- Patty Murray
(Prefers Democratic Party)
- Chris Vance
(Prefers Republican Party)
- _____
Write-in:

Congressional District 8

U.S. Representative

- Dave Reichert
(Prefers Republican Party)
- Tony Ventrella
(Prefers Democratic Party)
- _____
Write-in:

State

Governor

- Jay Inslee
(Prefers Democratic Party)
- Bill Bryant
(Prefers Republican Party)
- _____
Write-in:

Lt. Governor

- Cyrus Habib
(Prefers Democratic Party)
- Marty McClendon
(Prefers Republican Party)
- _____
Write-in:

Secretary of State

- Kim Wyman
(Prefers Republican Party)
- Tina Podlodowski
(Prefers Democratic Party)
- _____
Write-in:

State Treasurer

- Duane Davidson
(Prefers Republican Party)
- Michael Waite
(Prefers Republican Party)
- _____
Write-in:

State Auditor

- Mark Miloscia
(Prefers Republican Party)
- Pat (Patrice) McCarthy
(Prefers Democratic Party)
- _____
Write-in:

Attorney General

- Bob Ferguson
(Prefers Democratic Party)
- Joshua B. Trumbull
(Prefers Libertarian Party)
- _____
Write-in:

Commissioner of Public Lands

- Steve McLaughlin
(Prefers Republican Party)
- Hilary Franz
(Prefers Democratic Party)
- _____
Write-in:

Superintendent of Public Instruction

- Nonpartisan Office
- Erin Jones
- Chris Reykdal
- _____
Write-in:

Insurance Commissioner

- Mike Kreidler
(Prefers Democratic Party)
- Richard Schrock
(Prefers Republican Party)
- _____
Write-in:

Legislative District 12

State Senator

- Brad Hawkins
(Prefers Republican Party)
- Jon Wyss
(Prefers Republican Party)
- _____
Write-in:

State Representative Position 1

- Cary Condotta
(Prefers Republican Party)
- Dan Maher
(Prefers Democratic Party)
- _____
Write-in:

State Representative Position 2

- Mike Steele
(Prefers Republican Party)
- Jerry Paine
(Prefers Republican Party)
- _____
Write-in:

County

Chelan County Commissioner District 1

- Kevin Overbay
(Prefers Republican Party)
- Randy Harrison
(Prefers Republican Party)
- _____
Write-in:

Chelan County Commissioner District 3

- Doug England
(Prefers Republican Party)
- _____
Write-in:

Judicial: Nonpartisan Offices

- Supreme Court Justice Position 1**
- Mary Yu
- David DeWolf
- _____
Write-in:

Supreme Court Justice Position 5

- Barbara Madsen
- Greg Zempel
- _____
Write-in:

Supreme Court Justice Position 6

- Charles (Charlie) Wiggins
- Dave Larson
- _____
Write-in:

Court of Appeals Division 3, District 3 Judge Position 1

- 4 Year unexpired term
- Rebecca Pennell
- _____
Write-in:

Chelan Superior Court Judge Position 1

- Lesley A. Allan
- _____
Write-in:

Chelan Superior Court Judge Position 2

- T.W. (Chip) Small
- _____
Write-in:

Chelan Superior Court Judge Position 3

- Alicia H. Nakata
- _____
Write-in:

County: Nonpartisan Offices

Public Utility District Commissioner District 3

- Ann Congdon
- (Skip) Cameron Morehouse
- _____
Write-in:

Public Utility District Commissioner District A

- Steve McKenna
- Carnan Bergren
- _____
Write-in: