

Chelan County Official Local Voters' Pamphlet

August 5, 2025 Primary Special Election

Voters should receive their Primary Special Election ballot by July 23.



Table of Contents

Primary Only Voter	1
Voting Center	2
Accessible Voting	2
Address Confidentiality Program	2
Felony Conviction	2
Ballot Drop Box Locations	3
Ballot Instructions	4
Cashmere School District No. 222	5-6
Manson School District No. 19	7-8
Not sure who to vote for?	8
City of Chelan	9-10
City of Wenatchee	11
Fire District No. 5	12
Fire District No. 6	13
Fire District No. 9	14
Do your part	15
Tips to Ensure your Ballot is Counted	15
Signature Verification Requirement	16
Check your Ballot Status	17



Primary Only Voter

Why am I getting a ballot?

As a voter turning 18 by the November General Election, you are eligible to vote in the August Primary Special Election.

Why does my ballot look different from other members of my household?

Your ballot may look different from other members of your household, as your ballot will only contain:

- Nonpartisan candidate races that contain three or more candidates appearing on a primary ballot
- Partisan candidate races, regardless of the number of candidates, appearing on a primary ballot.



You will not be voting on every item in this voters' pamphlet. Use your ballot to identify the races to review.



www.Elections.ChelanCountyWa.gov
elections@co.chelan.wa.us
350 Orondo Ave, Level 3 Ste 306
Wenatchee, WA 98801
509-667-6808

Chelan County Elections Voting Center

350 Orondo Ave Ste 306, Wenatchee, WA 98801

Phone: 509-667-6808

Email: elections@co.chelan.wa.us

Monday - Friday 9:00 a.m. - 5:00 p.m.
Election Day, August 5 9:00 a.m. - 8:00 p.m.

Voter Services:

- Register to vote
- Update voter registration
- Get a ballot and vote
- Replacement ballots for lost, damaged, or mismatched ballots
- Disability assistance - Large font, contrast, and audible ballot options
- Get a local voters' pamphlet

Accessible Voting



Chelan County Elections is committed to ensuring that all voters have the opportunity to vote a private and secure ballot.

Accessible Voting Units (AVU's) are available starting 18 days before an Election, until 8:00 p.m. on Election Day.

An AVU is a voting assistance unit that enables voters with visual impairments, cognitive/learning disabilities, illiteracy, or limited mobility to vote independently and privately.

An AVU presents your ballot on a monitor, you select choices by touching a screen, using a select wheel, or by using a tool. You can use headphones to listen to the text and prompts on your ballot. AVU's can also be fitted with sip-and-puff tools. AVU's are wheelchair accessible and screened from others to maintain privacy.



If I am a victim of a crime, can I vote safely?

Keep your voting address confidential

You may be able to enroll in the Address Confidentiality Program (ACP) and register as a Protected Records Voter if you are:

- A survivor of domestic violence, sexual assault, trafficking, stalking; or
- A criminal justice participant, election official, or protected health care worker who is a target for harassment.

To become a Protected Records Voter:

- You meet with a Certified Advocate who can assist with threat assessment, safety planning, and the program application.
- The best time to enroll is when you move or are planning to move to a location that is unknown to the offender and undocumented in public record.

Call 1 (800) 822-1065 or visit sos.wa.gov/acp.



Felony conviction?

Your right to vote is restored when you are no longer serving a sentence of total confinement in prison.



You must re-register to vote in order to receive a ballot.

You may re-register to vote by mail, in person, or online at VoteWA.gov.



Ballot Drop Box Locations

Drop boxes are open 18 days before Election Day. They remain open 24 hours a day until 8:00 p.m. Election Night!

Cashmere

Cashmere City Hall
101 Woodring St
Cashmere, WA
(Facing Mission Ave, walk-up)

Chelan

Chelan City Hall
135 E Johnson Ave
Chelan, WA
(Drive-thru access, in alley next to payment box)

Leavenworth

Leavenworth City Hall
700 Hwy 2
Leavenworth, WA
Drive-thru access

Manson

Manson Public Library
80 Wapato Way
Manson, WA
Walk-up access

You may also drop your ballot off in person at:

Chelan County Auditor's Offices

350 Orondo Ave
Wenatchee, WA
(509) 667-6808

Elections Department

Level 3, Ste 306
Open 9:00 a.m. - 5:00 p.m. Week Days
9:00 a.m. - 8:00 p.m. Election Night

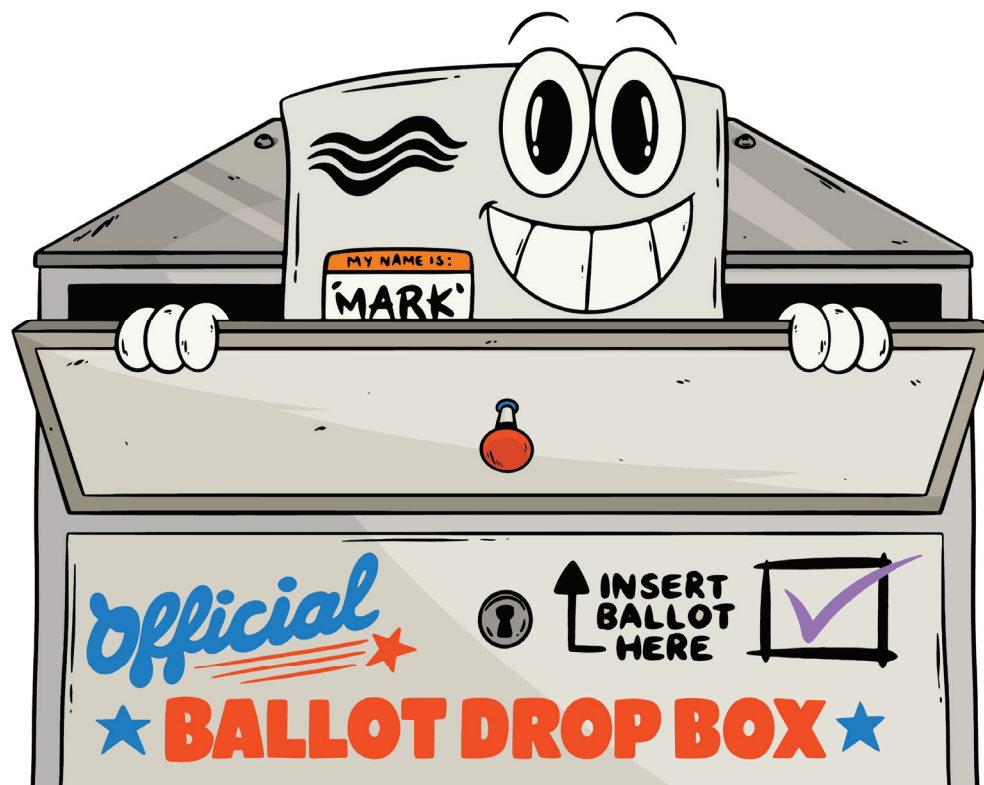
Licensing & Recording Department

Level 2, Ste 202
Open 9:00 a.m. - 5:00 p.m. Week Days

Wenatchee - Library

Wenatchee Public Library
310 Douglas St
Wenatchee, WA
(Drive-thru access, next to book drop)

No stamp needed to return your ballot!



Ballot Instructions

The following instructions are also found on your ballot.

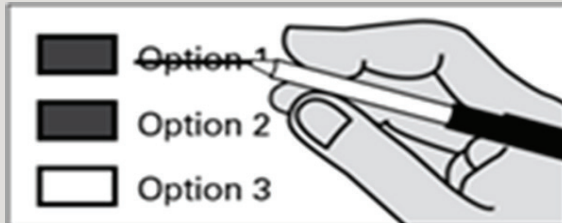
Instructions

How to vote:



Use a black or blue ink pen to completely fill in the box to the left of your choice.
Vote for one in each race.
If you vote for more than one, no votes will be counted for that race.

If you make a mistake:



Draw a line through the entire candidate name or measure response. Then make another choice.

Do not use white-out.

Optional write-in:



To vote for a candidate not listed for that race, fill in the box to the left of "write-in" and print the name on the dashed line.



Who donates to campaigns?
View financial contributors for state candidates and local measures:

Public Disclosure Commission
www.pdc.wa.gov
Toll Free 1-877-601-2828

Vote your ballot . . .

Use a blue or black ink pen to mark your ballot.
You may leave a contest blank, your ballot will still count.
Put your voted ballot in the security sleeve.
Put the security sleeve in the return envelope.
Seal the return envelope.
Sign and date the declaration on the return envelope. If you are unable to sign, make your mark and have it witnessed by TWO people. *Ensure that both people sign the envelope.*
A power of attorney cannot be used to sign a ballot.

Place your ballot in a ballot drop box . . .

Deposit your ballot in a drop box. Drop boxes are picked up by Elections department staff, not the USPS. See drop box locations on page 3.
Drop boxes are open 18 days before Election Day. They remain open 24 hours a day until 8:00 p.m. Election Night.
Chelan County strongly encourages using drop boxes.

Or return your ballot by mail . . .

NO STAMP required if mailed in the U.S.
*Ballots sent by USPS **MUST** be postmarked no later than Election Day, August 5.*

Contact Chelan County Elections . . .

If you lost, damaged or did not receive your ballot, a replacement ballot is available. To get a replacement ballot:

Phone: 509-667-6808
Email: elections@co.chelan.wa.us
Web: www.elections.chelancountywa.gov
In person: 350 Orondo Ave, Level 3 Ste 306
Wenatchee, WA 98801

Remember to sign your return envelope!



Mike Ledbetter

Contact
(509)421-0677
kml Ledbetter76@gmail.com

Elected Experience
None

Other Professional Experience
Currently employed at Chelan County PUD as Planner/Scheduler here in Wenatchee.
I was enlisted in the U.S Army from 1996-2002 and ended my military career with an honorable discharge.

Education
Wenatchee High School Graduate.
Various leadership training for US Army.

Community Service
From 2011-2018, Commissioned Reserve Sheriff for Chelan County Sheriff’s Office
2018-Current, Cashmere Fire Department EMT/Firefighter Volunteer
For the past 7 years I have been a youth sports Coach here in Cashmere, coaching soccer and youth football
Volunteered in the past as a “Watchdog” at Vale Elementary and currently at Cashmere Middle School as classroom helper, and occasional field trip chaperone.

Statement
My name is Mike Ledbetter, and I am running for the Cashmere School Board because I believe every child deserves the best opportunity to succeed—not just in school, but in life too.
Education should empower students to think critically, sharpen their own understandings, and forge their own path with confidence. As a member of the school board, I will be committed to ensuring our schools provide a strong foundation for every student’s future.
Cashmere is more than just a town, it’s a community. My wife, Bree, and I knew early on in our marriage that this was the place we wanted to call home. We’re grateful to be raising our two sons here, in the same town where Bree grew up and graduated from.
As a school board member, I will listen to parents, teachers, and students to make thoughtful, fair decisions that strengthen our school district. Above all, I will work tirelessly to uphold the values that make Cashmere a wonderful place to live and learn. It would be an honor to earn your vote and serve this community as we work together to build a bright future for our children, our schools, and our town.



Mark Shorb

Contact
(509) 885-0676
www.ShorbForCSB.com
ShorbforCSB@gmail.com

Elected Experience
No Information Submitted

Other Professional Experience
Mark’s 20-year teaching career began with Teach for America on the Navajo Nation in 2002. He has home school students, directed after school programs, and taught in the Orondo School District as part of the School Improvement Team.

Education
Earned: BA in History from University of Richmond, Masters in Literacy Education from University of San Diego

Community Service
Mark is past president of Cashmere Rotary, sits on the Cashmere Museum board, and is a 3-year President of the Vale PTO spearheading a supply purchase program saving the community over \$12,000 annually. He also volunteers to manage and support fundraising campaigns throughout our valley.

Statement
I am proud to be running for a seat on the Cashmere School Board.
Cashmere is a special town, and at its heart is a thriving school district. Academics, sports, music, drama, FFA, and career preparation, among other programs, are all impactful and deserving of high praise. Our family has been fortunate to live in the District for the past 18 years. Our children happily attend Cashmere Schools. As a school board member, I will put in the time and effort to continue Cashmere School District’s tradition of excellence.

I feel strongly that my experience in education, open-minded character, and close connections within the community would be an asset to the Cashmere School Board. I am prepared to listen to family, staff, and student concerns. Everyone deserves to be heard. I am ready to embody the professionalism and accountability required of a School Board member. I am committed to a balanced budget and a fiscally conservative approach that values our community’s investment through levies and bond issues. I am an intent listener and clear communicator who aims to bring people together behind the shared goal of student success. I would be honored to have your vote.



Aaron Lowers

Contact
(509) 782-2792
jalowers@gmail.com

Elected Experience
No Information Submitted

Other Professional Experience
Aaron owns Timberwood Construction, a second-generation, locally rooted business. He has also provided consulting services to various nonprofit organizations on projects throughout the valley.

Education
Aaron Lowers is a proud graduate of Cashmere High School and Whitworth University.


Community Service
A committed member of the Cashmere community, Aaron is actively engaged in supporting youth sports, educational programs, outdoor recreation, and a variety of local events.

Statement
Aaron Lowers is a 4th-generation graduate of Cashmere High School, a local business owner, and a lifelong member of the Cashmere community. He and his wife, Jillian, are raising their two sons in the Cashmere School District, giving him a deep and personal investment in the future of local education.

Aaron’s values align with what Cashmere is—and has always been: rooted in family, responsibility, tradition, and pride in our schools. He’s running for school board to help ensure that local values, academic excellence, fiscal responsibility, and strong local leadership stay at the heart of the district.

As a business owner, parent, and the spouse of an educator, Aaron brings a steady, well-rounded perspective. He’s known for staying level-headed, listening respectfully, and staying at the table even when conversations are tough.

With a steady, common-sense approach, Aaron is committed to transparency, supporting our teachers, empowering parents, and keeping classrooms focused on learning. He’s ready to serve the community that has shaped him and help ensure Cashmere schools remain strong for generations to come.



**Chelan County
Elections does
not correct
punctuation,
grammar, or fact
check candidate
and measure
statements.**



Ivan De Jesus

Contact
(509) 669-0626
ivandejesus97@gmail.com

Elected Experience
No information submitted

Other Professional Experience
No information submitted

Education
No information submitted

Community Service
No information submitted

Statement
No information submitted



Krysta Westmoreland

Contact
krysta.westmoreland@gmail.com

Elected Experience
President, Chelan Chamber of Commerce (2024–2025); Vice President, Chelan Chamber of Commerce (2022–2024)

Other Professional Experience
Small business owner and event marketing manager with 15+ years’ experience leading teams, managing budgets, and coordinating large-scale events in both business and nonprofit sectors.

Education
B.S. in International Business, Southern New Hampshire University

Community Service
Volunteer for multiple Chelan Valley nonprofits. Former Marketing & Events Director, Exeter Area Chamber of Commerce. Experienced board liaison and advocate for local engagement and outreach.

Statement
I’ve proudly called Manson home for the past eight years. As a small business owner in the valley, I understand the importance of strong community connections, long-term planning, and sound decision-making. I’ve both served on boards and reported to them, which has given me a clear understanding of governance, accountability, and the value of listening to all voices at the table.

As a parent of two young children, I have a deeply personal investment in the success of our schools. I want to ensure the Manson School District remains a top-performing district that meets the needs of every student—academically, socially, and emotionally.

I’m committed to thoughtful, transparent leadership that represents the broad spectrum of our community. I believe in listening carefully, asking the right questions, and ensuring that no single interest—especially my own—outweighs the greater good.

I’m running for the Manson School Board to support our students, teachers, and families, and to contribute to the continued excellence and growth of our district. I’d be honored to earn your vote.



Aurora Flores

Contact

(509) 293-0927
aflores1986@yahoo.com

First a little bit about myself... I am the oldest of nine siblings. All of my siblings with the exception of one have graduated from college and some have gone on to obtain graduate degrees and work in professional careers. Although I am proud of my siblings' accomplishments, I don't say this to boast but to reflect on the concept that public education opens doors to each and every student. I have four children (all of whom graduated from the Manson School District). My husband, Balentin, and I decided to make our home in Manson because of the quality of life and the small-rural community feeling.

Candidate Statement

I have lived in Manson for thirty-seven years and have been involved in education as a school board member and as a practitioner. I have also been involved in the following organizations: Manson School Board for twenty-four years and also served two years on the Parlier School Board in California for a total of twenty-eight years; Appointed to serve on the Professional Educator Standards Board (PESB); Washington State School Directors Association (WSSDA) - Vice-president (2016); Washington State School Directors Association - President Elect (2017); Washington State School Directors Association - President (2018); Manson Apple Blossom Chair; Lake Chelan Health and Wellness Foundation Board Member; Past member of the Business and Professional Women; Past Chair of the WSSDA Diversity and Multi-Cultural Advocacy Team; Served on the WSSDA Legislative, Nominating and Conference Committees; Most recently elected as the Associate Chair of the Washington School Counselor Association (WSCA)

Education

Reedley College - AA degree; California State University, Fresno - BS - Business Administration - Accounting; Heritage University - M.Ed. - Counseling; Grand Canyon University - Doctoral program

Experience

I have worked as a paraeducator, community liaison, a banking operations officer, a school district finance manager, and an auditor for the State of Washington. Currently, I am a school counselor for the Omak School District in the online, Washington Virtual Academy (WAVA) program.

Why I would like to serve

Serving on the Manson School District Board is an exciting opportunity to which I will bring many years of board experience. I am looking forward to becoming part of the current team of board members, administrators, teachers and para-educators who are working hard in a rapidly changing and challenging environment to provide the best path to fulfill the mission of "Continuous Student Learning."

**NOT
SURE
WHO TO
VOTE
FOR?**



You are not required to vote every race or issue on your ballot.

You can leave any contest or issue blank if you are uncertain or don't feel informed enough to make a decision.

**DON'T WORRY, WE'LL
COUNT EVERY VOTE
YOU MARKED.**



Ben Laughlin

Contact

(509) 860-5647
bvegas820@yahoo.com

Elected Experience

No elected experience. That is a good thing

Other Professional Experience

36 year Bering Sea Crabber and Captain. Strong Decisive Leadership

Education

Sehome High School 1981 Bellingham

Community Service

1995-2002 Rec Association volunteer.
2011-2017 Co-founder Riverwalk Closet, a free clothing charity.
2015-2016 Volunteer Firefighter.
2018-2021 Co-founder Fresh Winds Restoration, providing work for the homeless then donating profits to local charities.
2018 -2024 Asst Coach AAU basketball.
2021 Citizens Advisory Group fire district 7.
2024- 2025 Spent countless hours meeting with council members, department heads, School District, and most importantly, reaching out to voters for input concerning Chelan's future.

Statement

I have lived in Chelan 29 years and had family here for 50+ years. In that time, I have seen the needs of the citizens pushed aside in favor of chasing tourism dollars. It's time to focus on you. With 430 apartment units coming to Chelan, we can expect 600 more daily drivers on our roads and in front of our schools. Manson has experienced growth as well. Traffic flow and a two way bridge should be our number one infrastructure priority. The "lodging tax funds" should be used for our Parks/Golf Course repairs and maintenance. We do not need to create a "Parks Tax District". The golf course will not be sold or leased, as has recently been discussed. With no ties to tourism or business, I offer impartial representation for the community as a whole. Constantly improving the quality of life for year round residents will be my main objective on City Council. A vote for Ben Laughlin is a vote for you.



Shane Collins

Contact

(509) 470-1112
sjcollins79@gmail.com

Elected Experience

Washington Winegrowers Association Board Member 2015-present. Chair 2020-2024, Vice Chair 2017-2020. Government Affairs Committee for 10 years, Education Committee for 8 years, and the Sustainable Washington Development Committee from 2020-2022. Lake Chelan Wine Alliance Board Member 2009-2019 serving all roles of the executive committee.

Other Professional Experience

For the Last 22 years, I have worked in Viticulture and Enology.

Education

WSU B.A. Communication, 2004. WWCC AAAS, 2007

Community Service

Since 2017 I have served on various roles of the tech team, worship team, and community impact team of Real Life NCW. From 2017-2019 I was a Chelan High School Viticulture Class Mentor and Instructor.

Statement

I have lived in the Chelan Valley my entire life and was raised on a 50-acre orchard. Agriculture and agritourism remain central to both my work and my values. My wife is a teacher at MOE, and our children attend Chelan public schools. Over the years, I've seen our community change significantly through shifts in our downtown, demographics, and local economy. As a parent with a young family, I understand how vital parks, lake access, recreation, and affordable housing are to our community's quality of life.

Since 2019, I've regularly attended City Council meetings and currently serve on the Parks and Recreation Advisory Board. These roles have provided me with a strong understanding of the city's current infrastructure needs, including the East Chelan water project, public works upgrades, transportation, and issues related to park capacity, resident use, and funding.

Representing our region, I have traveled to Washington, D.C., and Olympia to advocate for agricultural priorities.

I care deeply about Chelan and I am committed to serving with dedication and knowledge. I'm running for City Council to advocate for thoughtful growth, to support local families and businesses, and to ensure Chelan's agricultural heritage remains a vital part of our future.



Jennifer S. Steiner

Contact

(425) 247-8202
jennifersteiner25@gmail.com

Elected Experience

Managed medical records and scheduling for legal submittals and court cases, coordinating with attorneys, physicians, and court staff to support evaluations and proceedings across multiple states.

Other Professional Experience

Held roles as Scheduling & Records Manager leading teams, improving processes, and providing high-level support in fast-paced medical and legal settings.

Education

Studied Elementary Education and Psychology at Washington State University; completed general studies and ASL coursework at Bellevue College.

Community Service

Volunteered for ChelanMan, Special Olympics, Lake Chelan Wine and Jazz Festival; co-chaired record breaking school auctions.

Statement

Jennifer is running for City Council to help guide the community through continued growth while preserving the small-town character that makes the city special. As more people discover and move to the area, it's essential to protect the strong foundation that has been built - one rooted in connection, tradition, and appreciation for the community.

Growth is inevitable, but how it is managed will define the city's future. Thoughtful planning, with input from residents, is necessary to ensure that development enhances rather than overwhelms what makes the city unique.

Affordable housing is vital to the success of local businesses, ensuring that those who work in the city can also afford to live there. At the same time, tourism plays a major role in supporting the local economy and must be nurtured responsibly so it benefits both visitors and long-time residents.

Balancing these priorities—growth, housing, and tourism—will be key to the city's future. Jennifer is committed to working on smart, sustainable projects that reflect the community's values, protect its quality of life, and support the people and businesses that make the city thrive.



Todd V Higley

Contact

todd@skydivechelan.com

Elected Experience or Judicial Experience:

Has served 3 years on the City of Chelan Parks Board

Professional/Work Experience

Owner and operator of Skydive Chelan and Airsports Chelan; Administrator/examiner for the the USPA; over 30 years in risk management and business management.

Education

Bachelor's degree in Music from Cornish College of the Arts.

Community Service

Active volunteer supporting youth sports and programs with the City of Chelan and the Boys & Girls Club.

Statement

I'm running for Chelan City Council, Seat #7 to help shape a future that supports families, local businesses, and the people who call Chelan home.

I've lived in Chelan since 2012 and have proudly built my life, business, and family here. I'm the owner of Skydive Chelan and Airsports Chelan—two businesses that support tourism, create local jobs, and showcase the natural beauty of our region. I bring over 30 years of risk management and business experience, along with a deep respect for safety, teamwork, and leadership.

I currently serve on the Chelan City Parks Board and stay active in youth sports as a coach for soccer, baseball, and basketball. As a father to a 6-year-old, I care deeply about the future we're building for our kids.

Through my businesses, I've worked closely with young adults starting in the workforce and have seen how hard it is to find housing they can afford. I believe Chelan needs forward-thinking solutions to address housing and preserve our community's character as it grows.

With the guidance of our residents, I want to promote smart development that protects our quality of life, supports our local economy, and keeps Chelan a place where everyday people can live, work, and raise a family.

Proposition No. 1
Sales and Use Tax for Transportation Improvement Program
The City Council of Wenatchee, Washington, acting through the assumed powers of the Transportation Benefit District, adopted Resolution No. 2025-11 concerning a sales and use tax to fund transportation improvements. This proposition would increase the sales and use tax rate by 0.2% (for a total rate of 0.3% as authorized by RCW 82.14.0455) to be collected on taxable retail sales within the City for 10 years beginning January 1, 2026, for the purpose of funding projects identified in the City’s Transportation Improvement Program, general street maintenance and repairs, and transportation infrastructure.

Argument For:
To put it bluntly, the City’s largest investment for its citizens is its roads—used and needed by everyone. Wenatchee maintains over 240 miles of road, but keeping them safe has become increasingly costly. In 2011, the City launched a program to maintain roads at a 70 /100 rating, supported by a \$2.2 million annual budget.
Occasionally, the City has had to dip into the general fund—like in 2019 when 15 miles were repaved—but this approach isn’t sustainable. Today, road conditions average 64 and could fall into the 50s within a decade. Arterial roads still rate at 70, but residential streets are deteriorating due to lack of funding.
The earlier we intervene, the cheaper repairs are—ranging from \$4 to over \$60 per square yard depending on road condition. Delaying until roads fall below 50 means exponentially higher costs.
To maintain safe roads, Public Works proposes increasing the road budget to \$4.5 million. A 0.2% sales tax would fairly spread the cost among all road users. Alternatives like car tab or property tax hikes would burden only residents, with the sales tax costing locals just \$30 annually— an economical solution to the potholes that will be missed!

Explanatory Statement
If approved by voters, Proposition No. 1 would authorize an increase to the City’s sales tax of two-tenths of one percent (0.2%) for ten years beginning on January 1, 2026, to fund projects in the City’s Transportation Improvement Program, general street maintenance and repairs, and transportation infrastructure. This tax would be paid by anyone who makes a taxable purchase in the City, whether a resident or non-resident.
The City of Wenatchee formed the Transportation Benefit District for the purpose of implementing and funding transportation improvements, including ongoing transportation improvements, of the City as identified by the Governing Board of the District. The geographical boundaries of the District are comprised of the corporate limits of the City of Wenatchee.
The Governing Board has identified projects that are in need of funding for the City’s Transportation Improvement Program, general street maintenance and repairs, and transportation infrastructure. Any material changes to the projects funded using the sales and use tax revenue would require a public hearing and passage of a resolution by the Governing Board.
State law requires that the Transportation Benefit District submit annual financial reports to the State Auditor’s Office and publish an annual transportation improvement report to the public.

Argument Against:
Resolution 2025-11 proposes a sales tax increase to fund regional transportation improvement and repair projects over the next 10 years. While taxes support many aspects of community development and maintenance, some voters may oppose sales tax increases specifically, as sales taxes are often considered *regressive*. Regressive taxes tend to have a greater impact on lower-income families. Additionally, sales taxes can lead to higher prices for goods in local stores, potentially making Wenatchee less competitive for businesses.
Others may object to how the tax is structured. Pedestrians, cyclists, and public transit users will pay the same tax rate as those who primarily drive, even though cars are the main source of wear on roads, creating most of the need for repairs and improvements.
Some voters may believe there are more effective ways to raise funds for future transportation projects. It is important to carefully consider both the potential benefits and drawbacks of this sales tax increase before casting your vote—for your own sake and for your community.

Local Measure Contacts

Jurisdiction Contact:
Tom Wachholder, Public Works Director
twachholder@wenatcheewa.gov
(509) 888-3205

Pro Committee Contact:
Mark Miller
mhmillr4@charter.net
(509) 885-5152
Kevin Nordt

Con Committee Contact:
Garth Donald
garthhasmail@gmail.com
(206) 697-1314

Proposition No. 1
Increase Number of Board Members

The Board of Fire Commissioners of Chelan County Fire Protection District No. 5, be increased from three members to five members?

Explanatory Statement
No statement submitted.

Argument For:

Expanding the Board: Greater Representation and Effectiveness
Increasing the Chelan County Fire District 5 Board of Commissioners from three to five members will enhance leadership and community representation. A larger board brings commissioners with broader skills and perspectives, improving the board’s ability to address complex issues and serve the district’s evolving needs.

With five commissioners, responsibilities are shared more effectively, reducing individual workload and allowing for more thorough oversight. This structure also helps prevent decision-making bottlenecks, as a larger board can form committees and advance multiple initiatives at once, leading to greater efficiency. More commissioners also mean increased transparency and accountability. With a wider range of voices, decisions are more thoroughly debated and reflect a broader spectrum of community interests. This fosters greater public trust in the board’s actions and helps ensure decisions are made in the district’s best interest.

As the district grows, a five-member board is better equipped to manage increased demands and maintain high standards in fire protection and emergency services. Expanding the board is a proactive step toward responsive, effective, and representative governance for the future of Chelan County Fire District 5.

Argument Against:

No committee could be found.

Local Measure Contacts

Jurisdiction Contact:
Arnold Baker, Fire Chief
arnoldb@mansonfire.org
(509) 687-3222

For Committee Contact:
Ronan Walsh
ronanw@ardglas.net
(425) 677-4501

Against Committee Contact:
No committee could be found.

Proposition No. 1
Levy Lift for Fire Protection & Emergency Medical Services

The Board of Commissioners of Chelan County Fire Protection District No. 6 adopted Resolution No. 2025-02 concerning a proposition to restore its fire protection and emergency medical services property tax levy.

This proposition authorizes the District to establish its property tax levy at \$1.40 per \$1,000.00 of assessed valuation in 2025 and authorizes adjustments by the greater of 3% or the annual U.S. City average unadjusted, all items index, west city class B/C, for the CPI-W reported each June for the following five years. The maximum allowable levy established in 2030 shall serve as the base for subsequent levy limitations consistent with chapter 84.55 RCW.

Explanatory Statement

Chelan County Fire Protection District No. 6 provides emergency fire protection and medical services to its citizens. If approved by the voters, this proposition authorizes the District to establish its property tax levy at \$1 .40 per thousand dollars of assessed valuation and will allow the District to address inflation by authorizing annual increases by the greater of 3% or the annual U.S. City average unadjusted, all items index, west city class B/C, for the CPI-W reported each June for the following five years subject to the statutory \$1.50 limit. The District’s current levy rate is \$.31 per thousand and the district has never in its 70-year history obtained an increased levy rate to support operations. The Board of Commissioners will establish the actual levy rate each year following a public hearing. The amount levied in 2030 for collection in 2031 will serve as the base for computing future one percent increases allowed by the law.

Your Fire District Board of Commissioners has determined that approval of this proposition is necessary to maintain an effective level of fire protection and emergency medical services, fire fighter staffing, equipment and facilities in light of the increasing demands for such services.

Argument For:

Our fire district’s ability to continue providing fire and emergency medical response services is at risk of being curtailed.

For seventy plus years this fire district has survived on the same community funding support that was requested when the fire district was formed in 1955. During those years, our communities have grown, and the demands on, and expectations for our volunteer fire district have increased tremendously. Population and property values in our fire district have increased significantly, while the funding provided has remained virtually the same.

The results of this funding shortage means that the personal protective equipment provided to our volunteer firefighters no longer meets current standards, which puts them at risk every time they respond to a call. Equipment and vehicles are old and require constant repair, and are often obsolete by today’s standards, which endangers not only firefighter safety but also the rescue victims from car accidents and other emergencies.

As 50-year residents of this community, we urge you to support Chelan County Fire District #6 Ballot Measure #1 which will provide the financial resources necessary for our volunteers to protect our families, neighbors, homes, and communities.

Argument Against:

No committee could be found.

Local Measure Contacts

Jurisdiction Contact:
Andy Lee, Chief
andyleechelanfire6@gmail.com
(509) 663-1678

Pro Committee Contact:
Evelyn Arnold
cozycove@hotmail.com
Randy Arnold

Con Committee Contact:
No committee could be found.

Proposition No. 1
Fire Station, Emergency Response, and Firefighter Safety Improvements
General Obligation Bonds - \$15,000,000

The Board of Commissioners of Chelan County Fire Protection District No. 9 (d/b/a Lake Wenatchee Fire & Rescue), Chelan County, Washington, adopted Resolution No. 2025-2 concerning bonds for fire stations and facilities, equipment, and wildfire mitigation. To provide increased fire prevention and protection, emergency medical services, and wildfire defense, this proposition authorizes LWFR to construct and improve fire stations and structures, including shops, training facilities, and a new public safety facility; upgrade and acquire firefighter equipment; modernize technology infrastructure for emergency response; issue \$15,000,000 of general obligation bonds maturing within a maximum of 20 years; levy annual excess property taxes to repay the bonds, as provided in Resolution No. 2025-2.

Explanatory Statement

The population in Lake Wenatchee Fire & Rescue (“LWFR”) has increased, causing call volumes and demands for service to rise. Further, wildfire risk in Chelan County has increased, resulting in many business and property owners facing a property insurance coverage crisis, leading to higher insurance costs and difficulty renewing and/or obtaining coverage. Many LWFR facilities are over 40 years old and are in need of improvement and rehabilitation to continue to provide fire protection, emergency management, basic life support, rescue, and wildfire defense. Proposition 1 allows LWFR to construct, improve, modernize, and equip fire stations and related structures, including shops and training facilities, serving the Plain, Ponderosa, Beaver Valley, Nason Creek, Merritt, Chiwawa river, and Lake Wenatchee communities, construct and improve related infrastructure, construct a new public safety facility, acquire equipment, modernize technology, and make needed improvements to aging facilities.

Proposition 1 would authorize the issuance of \$15,000,000 of general obligation bonds to be repaid over 20 years and the levy of annual property taxes to repay the bonds. Our estimate of the levy rate is \$0.61 per \$1,000 of assessed valuation, which converts to about \$304 per year, or \$25 per month, for a \$500,000 residential property.

Argument For:

The proposed building bond represents a critical step towards enhancing the safety, preparedness, and effectiveness of our firefighting and rescue services. This investment is a long overdue necessity that will have far-reaching benefits for every member of our community.

The bond will provide funding to construct and upgrade fire stations to ensure they support the mission of today and tomorrow. These improvements will enable firefighters to train and respond more effectively to emergencies, minimizing response times and with greater capability. The updated fire stations will be better equipped to handle large-scale emergency operations and natural disasters thus safeguarding our community without solely relying on out of the area support and resources.

Investing in our fire stations supports our area’s fire protection rating making it easier to obtain and maintain affordable home insurance; allows for multi-use community space; and better supports our local seniors and youth.

Supporting this bond is an investment in the future of our community. It ensures that our firefighters have the resources they need to protect us, enhances public safety, and contributes to the local economy. We urge you to vote in favor of this bond, securing a safer and more resilient community for all.

Argument Against:

No committee could be found.

Local Measure Contacts

Jurisdiction Contact:
David Walker, Fire Chief
dwalker@lwfr.org
(425) 471-8107

Pro Committee Contact:
Jarrett Payne
jarrett777@gmail.com
(206) 653-5766
Stan Morgan, Bob Adamson

Con Committee Contact:
No committee could be found.



Do your part!

While the Elections Office is continually updating the voter rolls with information from the Department of Licensing, the post office, local obituaries and a monthly public health deceased list, you can do your part by following these simple steps:

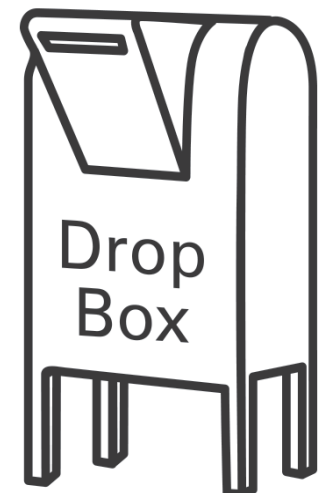
- Update your address with the Elections Office whenever it changes. Address changes can be made online through www.VoteWA.gov, by email, mail or phone until 5:00 p.m. July 28. You may update your registration in-person until 8:00 p.m. on Election Day.
- If you are a snowbird or a college student, email or call to set up a seasonal or temporary mailing address.
- Return to Sender! If you receive a ballot for a person who does not live at your residence, write "Does not live here" on the unopened envelope and put it back in the mail.
- If you receive a ballot for a recently deceased voter, write "Deceased" on the unopened envelope and put it back in the mail. We will research and follow up.

Keeping up-to-date with the Elections Office is quick and easy!

www.Elections.ChelanCountyWa.gov
elections@co.chelan.wa.us
 350 Orondo Ave, Level 3 Ste 306
 Wenatchee, WA 98801
 509-667-6808

Tips to Ensure Your Ballot is Counted

1. Sign in the signature box that has **your name** printed on the envelope.
2. If you registered to vote online, or when you obtained your driver's license, the signature on your driver's license is the signature in your voter registration record.
3. If you are unsure about the signature in your voter registration record, we encourage you to call the Elections Office at (509) 667-6808. We can provide a description of the signature you used when you registered to vote.
4. **Do not** sign someone else's name, even if you have power of attorney.
5. Voting over the phone by having someone else fill out and sign your ballot **is against the law**. Voters can call at (509) 667-6808 to learn about the options for voting while they are out of town.
6. Drop boxes are available if you don't want your signature to go through the mail. See "Ballot Drop Box Locations" on page 3 for a list of open drop boxes.



Signature Verification Requirement and Cure Process

Sometimes signatures change. If that is the case, don't worry! We will send you a form to update your signature. If we have a phone number on file for you, we will also call you to remind you to return your form. Need a reminder of what signature we have for you? Take a look at your Driver's License. Many people register to vote when they apply/renew their Driver's License, so that is the signature we would have on file for you.



Chelan County Elections employees are trained in signature verification. They compare your signature on the return envelope to the signature we have on file for you.

Signature challenges occur when a voter does not sign the back of the ballot return envelope or when the signature on the return envelope does not match the signature(s) in their voter registration record. Any voter with a signature challenge can fix the issue and have their ballot counted by filling out and returning a form to Chelan County Elections before the day the election results are certified.

If you would like to update your signature for future elections, simply scan the QR Code to print a voter registration form. You can mail the form back to us at the address listed on the form.





CHECK YOUR BALLOT STATUS:

www.VoteWA.gov

During an election, track your ballot at www.VoteWA.gov. The ballot status will update as your ballot is received. Please allow 3-5 business days for your ballot status to be posted.

Ballot Status Categories:

Sent - Ballot has been marked as sent by the county (date may be in the future).

Accepted - Signature review has been completed, the voter has been credited with voting, and the ballot is accepted.

Rejection/Challenged + Challenged Reason - Signature or ballot has been challenged. The Chelan County Elections Office will contact the voter.

Challenge Reasons:

These challenge codes require action by the voter. The voter will be contacted by the Chelan County Elections Office.

Unsigned - The voter did not sign the declaration on the outside of the return envelope.

Signature Does Not Match - The signature on the return envelope does not match signature on file.

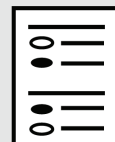
ID Required - The voter registration has failed the ID check and must provide ID before the ballot can be counted.

Power of Attorney - A Power of Attorney has signed the declaration on behalf of the voter. This is *not allowed* for voting purposes.

The status for this code could change during processing.

Hold - Voter returned a previously issued ballot that has been superseded. If the ballot returned is the same ballot style as the current ballot, it will be counted. If different ballot style, the ballot must be held until 7 days after Election Day.

**Has my ballot
been counted?**

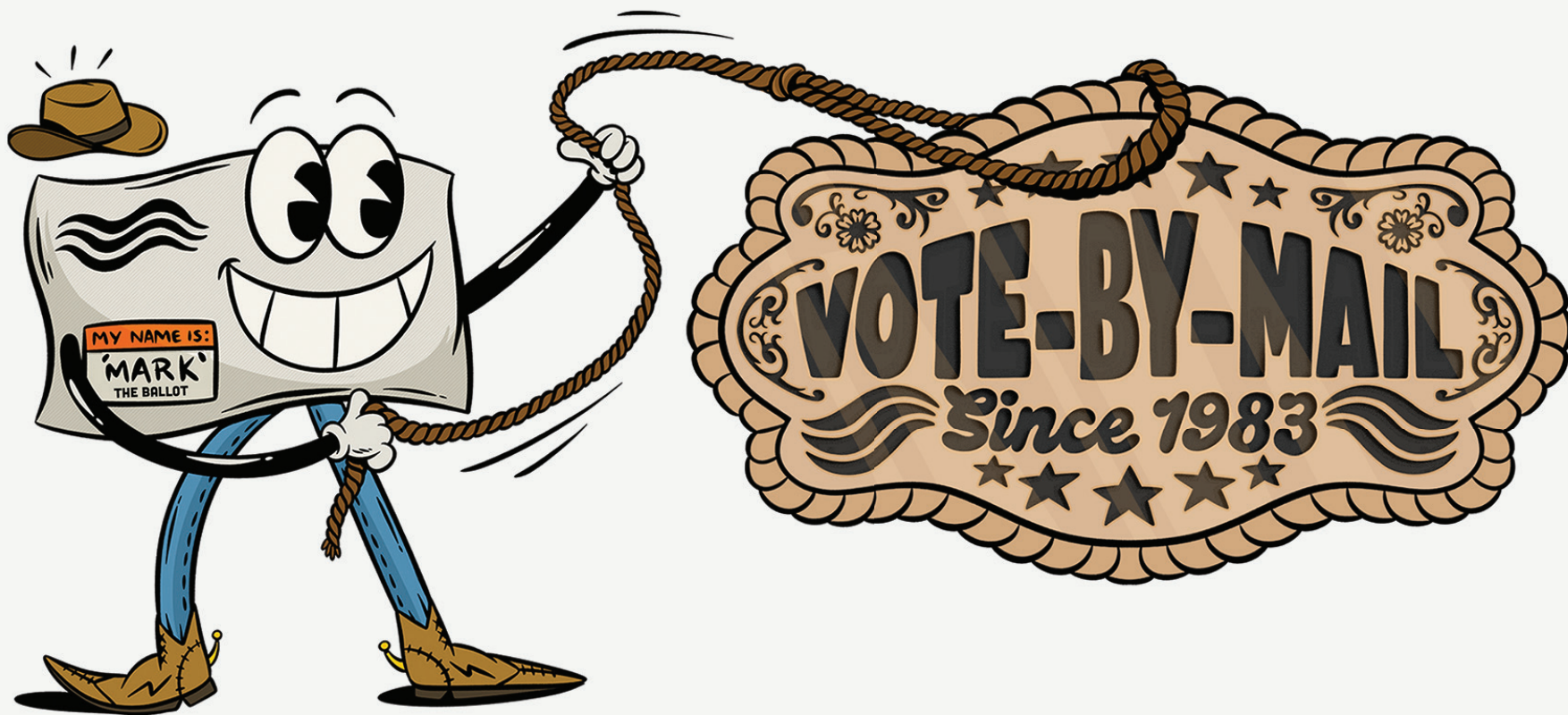


**Tracking your ballot is
easier than ever!**

Sign up for text notifications when you register or update your info at **VoteWA.gov**.



*This ain't our
first rodeo!*




CHELAN COUNTY
~ ELECTIONS ~
350 Orondo Ave
Level 3 Ste 306
Wenatchee, WA 98801-2885



NONPROFIT ORG.
US Postage
PAID
Wenatchee, WA
Permit No. 90
ECRWSS

Residential Customer

Return your ballot by mail.

No Stamp Needed!

We recommend dropping your ballot in the mail by the Friday before Election Day to make sure it gets postmarked in time to be counted.

Mailed ballots must be postmarked by August 5.

