

SAMPLE BALLOT

Chelan County, Washington
SAMPLE BALLOT
Special Election
April 23, 2013

Precinct 1

Instructions

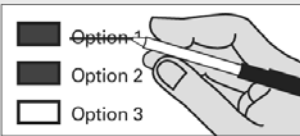
How to vote



Use a dark blue or black ink pen to completely fill in the box to the left of your choice.

Vote for one in each race. If you vote for more than one, no votes will be counted for that race.

If you make a mistake



Draw a line through the entire measure response or candidate's name.

Then you may make another choice.

SCHOOL DISTRICT

WENATCHEE SCHOOL DISTRICT NO. 246

PROPOSITION 1

WENATCHEE SCHOOL DISTRICT NO. 246
REPLACEMENT OF EXPIRING EDUCATIONAL
PROGRAMS AND OPERATION LEVY

The Board of Directors of Wenatchee School District No. 246 adopted Resolution No. 01-13 concerning a proposition to finance educational programs and operation expenses. This proposition would authorize the District to levy the following excess taxes, in place of an expiring levy, upon all taxable property within the District, for support of the District's General Fund educational programs and operation expenses:

Collection Year	Approximate Levy Rate/\$1,000 Assessed Value	Levy Amount
2014	\$3.18	\$11,131,000
2015	\$3.27	\$11,465,000
2016	\$3.37	\$11,809,000
2017	\$3.47	\$12,163,000

all as provided in Resolution No. 01-13.
Should this proposition be approved?

- LEVY . . . YES
 LEVY . . . NO

Sample Ballot 12000010100011

000000001102

Sample Ballot

0493031116

SAMPLE BALLOT



Sample Ballot12000010200018

000000001393



This page intentionally left blank

Sample Ballot

0493031116

