

Sample Ballot

General Election
November 8, 2022
Chelan County, Washington

Precinct 114-2

Page 1 of 2

23725 v2 235

Instructions:

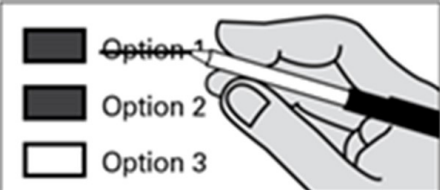
How to vote:



Use a dark blue or black ink pen to completely fill in the box to the left of your choice.

Vote for one in each race. If you vote for more than one, no votes will be counted for that race.

If you make a mistake:



Do not use white-out.
Draw a line through the entire measure or candidate's name. Then you may make another choice.

Optional write-in:



To vote for a candidate not listed for that race, fill in the box to the left of "write-in" and print the name on the dashed line.

Who donates to campaigns?

View contributors for candidates and measures:

Public Disclosure Commission

www.pdc.wa.gov
Toll free (877) 601-2828

State Measures

Advisory Votes

Advisory Vote No. 39
Engrossed Substitute Senate Bill 5974

The legislature increased, without a vote of the people, the tax on aircraft fuel from 11 cents to 18 cents per gallon, costing \$14 million in its first ten years, for government spending.

This tax increase should be:

- Repealed
- Maintained

Advisory Vote No. 40
Engrossed Substitute House Bill 2076

The legislature imposed, without a vote of the people, premiums on "transportation network companies" to provide workers compensation to their drivers, costing an indeterminate amount in its first ten years, for government spending.

This tax increase should be:

- Repealed
- Maintained

READ: Each candidate for partisan office may state a political party that he or she prefers. A candidate's preference does not imply that the candidate is nominated or endorsed by the party, or that the party approves of or associates with that candidate.

Partisan Offices

Federal

U.S. Senator

- Patty Murray (Prefers Democratic Party)
- Tiffany Smiley (Prefers Republican Party)
- Write-in

Congressional District 8

U.S. Representative

- Kim Schrier (Prefers Democratic Party)
- Matt Larkin (Prefers Republican Party)
- Write-in

State

Secretary of State

2 year unexpired term

- Steve Hobbs (Prefers Democratic Party)
- Julie Anderson (Prefers Nonpartisan Party)
- Write-in

Legislative District 12

State Representative Pos. 1

- Keith W. Goehner (Prefers Republican Party)
- Write-in

State Representative Pos. 2

- Mike Steele (Prefers Republican Party)
- Robert K Amenn (Prefers Republican Party)
- Write-in

County

Assessor

- Deanna C Walter (Prefers Republican Party)
- Write-in

Auditor

- Skip Moore (Prefers Republican Party)
- Write-in

Clerk

- Sandra Arechiga (Prefers Independent Party)
- Marty (Martin) Young (Prefers Republican Party)
- Write-in

Commissioner District No. 2

- Anne Hessburg (Prefers Independent Party)
- Shon D. Smith (Prefers Republican Party)
- Write-in

Continue voting next side --->

Read Both Sides of the Ballot

Coroner

Wayne E. Harris
(Prefers Republican Party)

Write-in

Prosecuting Attorney

4 year short & full term

 Robert W. Sealby
(Prefers Republican Party)

Write-in

Sheriff

Brian Burnett
(Prefers Republican Party)

 Mike Morrison
(Prefers Republican Party)

Write-in

Treasurer

David E Griffiths
(Prefers Republican Party)

Write-in

Nonpartisan Offices

Judicial

Supreme Court Justice Position 1

Mary I. Yu

Write-in

Supreme Court Justice Position 5

Barbara Madsen

Write-in

Supreme Court Justice Position 6

G. Helen Whitener

Write-in

Superior Court Judge Position 1

2 year unexpired term

 Robert E. Jourdan

Write-in

District Court Judge Position 1

Allen F. Blackmon

 Jon Volyn

Write-in

District Court Judge Position 2

Kyle Mott

Write-in

County

**Public Utility District
Commissioner District 3**

Aurora Flores

 Carnan Bergren

Write-in

**Public Utility District
Commissioner District B**

Kelly Allen

Write-in

Local Issues

Mosquito Control District

**Chiwawa Mosquito Control
District**

Proposition No. 1
Shall a mosquito control district be established for the area described in Resolution #2022-62 adopted by the Board of Chelan County Commissioners on June 28, 2022?

 Yes

 No

**Chiwawa Mosquito Control
District**

Proposition No. 2
One year 10¢ per thousand dollars of assessed value levy.

Shall the mosquito control district, if formed, levy a general tax of 10¢ per thousand dollars of assessed value for one year upon all the taxable property within said district in excess of the constitutional and/or statutory tax limits for authorized purposes of the district?

 Yes

 No