



CHELAN COUNTY
DEPARTMENT OF COMMUNITY DEVELOPMENT
316 WASHINGTON STREET, SUITE 301, WENATCHEE, WA 98801
TELEPHONE: (509) 667-6225 FAX: (509) 667-6475

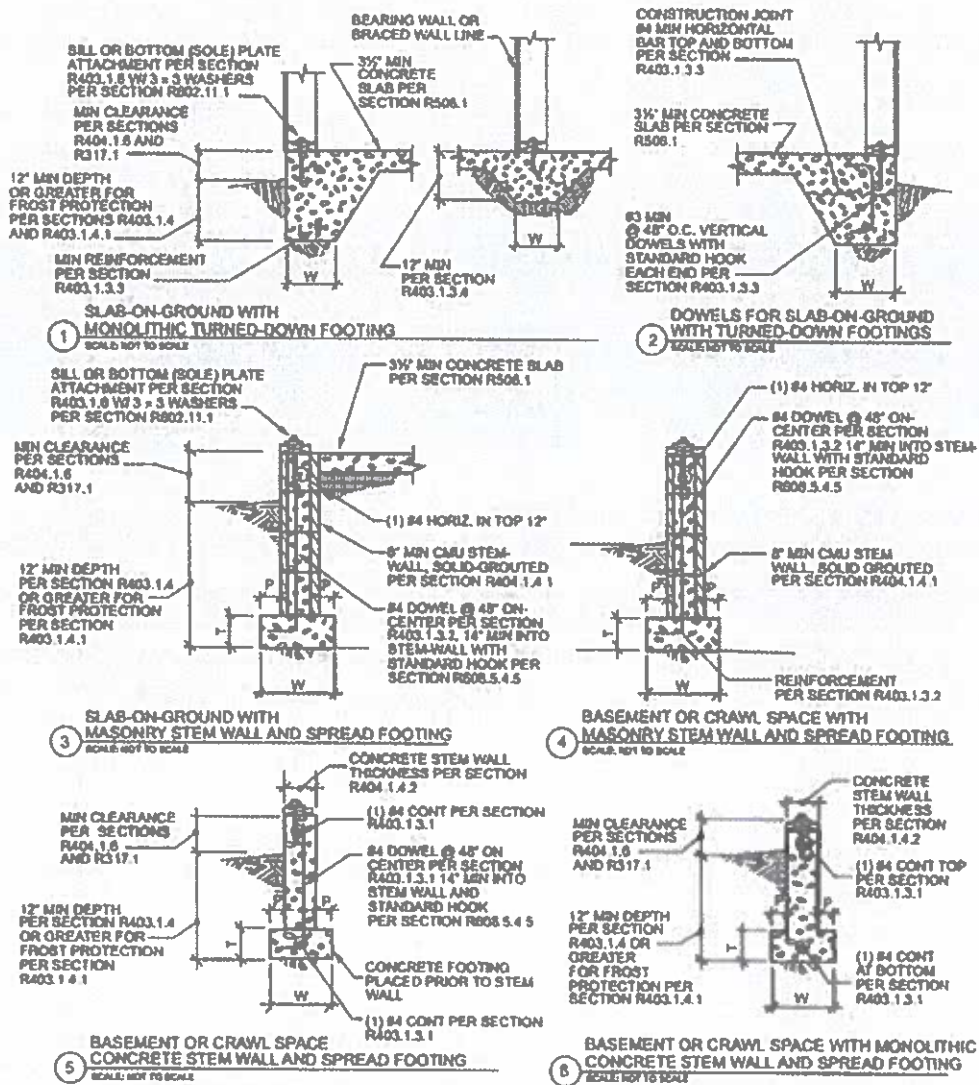
PERMIT BY INSPECTION PROGRAM
ACCESSORY STRUCTURES AND THEIR ADDITIONS

**ACCESSORY STRUCTURES AND ADDITIONS TO ACCESSORY STRUCTURES
THAT TOTAL 600 SQUARE FEET OR LESS AND CONTAIN NO PLUMBING**

1. Frost protection of free-standing accessory structures with an area of 600 square feet or less, of light-frame construction, with an eave height of 10 feet or less shall not be required.
2. Slab on grade foundations must be 3.5-inches minimum thickness
3. Footing and foundation systems, if used, must meet frost depth of 24-inches and must meet the minimum requirements based on the applicable SDC:
 - a. SDC-C (12 x 6 footing with or without rebar)
 - b. SDC-D (per Section R403.1.3 details)
4. Soils must meet presumptive soil bearing value of 1500 PSF minimum
5. Stud height cannot exceed 10 feet and story height 11'-7"
6. Ground Snow Load cannot exceed 70 PSF
7. Braced walls must be installed as CS-WSP (continuous sheathing wood structural panels) 7/16-inch minimum OSB or 15/32-inch plywood
8. Panel nailing must be 6d deformed or 8d common spaced at 6-inch edge and 12-inch field nailing pattern
9. Portal frames, if used, must be installed per Figures R602.10.6.1, R602.10.6.2, or R602.10.6.3
10. Trusses must be used and the TCLL must be designed to 50 PSF unless analysis allows a lower live load
11. Roofing material must be Class A (asphalt shingles, metal, etc.) no wood shingles

PERMIT by INSPECTION

CHAPTER 4 FOUNDATIONS



W = Width of footing, T = Thickness of footing and P = Projection per Section R403.1.1

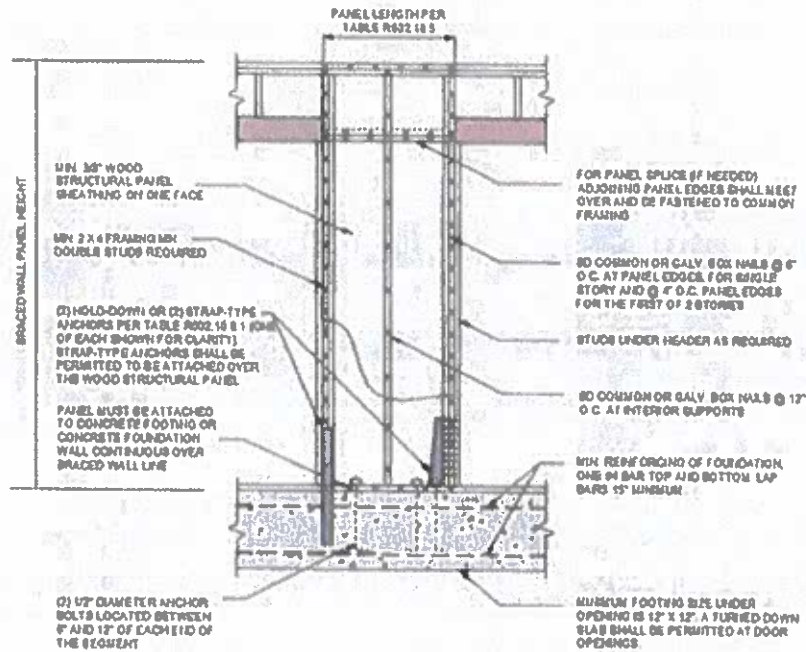
NOTES:

- See Section R404.3 for sill requirements.
- See Section R403.1.6 for sill attachment.
- See Section R506.2.3 for vapor barrier requirements.
- See Section R403.1 for base.
- See Section R408 for under-floor ventilation and access requirements.
- See Section R403.1.3.5 for reinforcement requirements.

FIGURE R403.1.3

REINFORCED CONCRETE FOOTINGS AND MASONRY AND CONCRETE STEM WALLS IN SDC D₀, D₁ AND D₂^{a, b, c}.

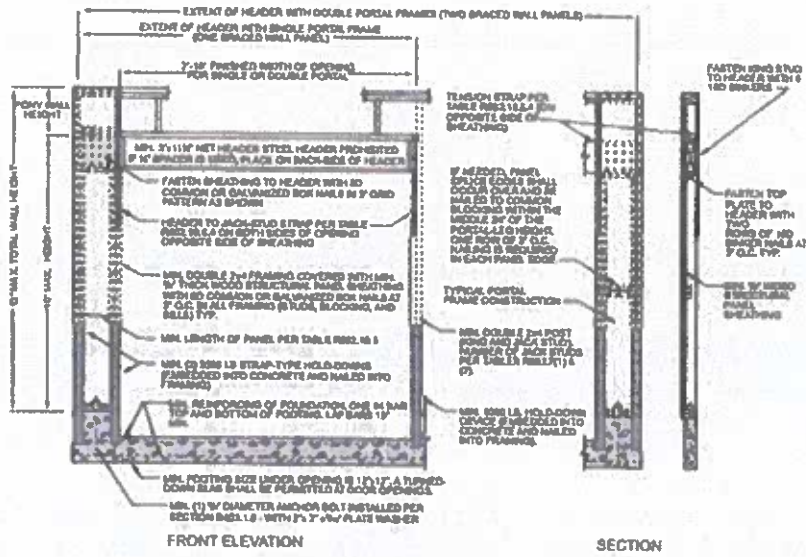
CHAPTER 6 WALL CONSTRUCTION



For SI: 1 inch = 25.4 mm.

FIGURE R602.10.6.1
METHOD ABW—ALTERNATE BRACED WALL PANEL

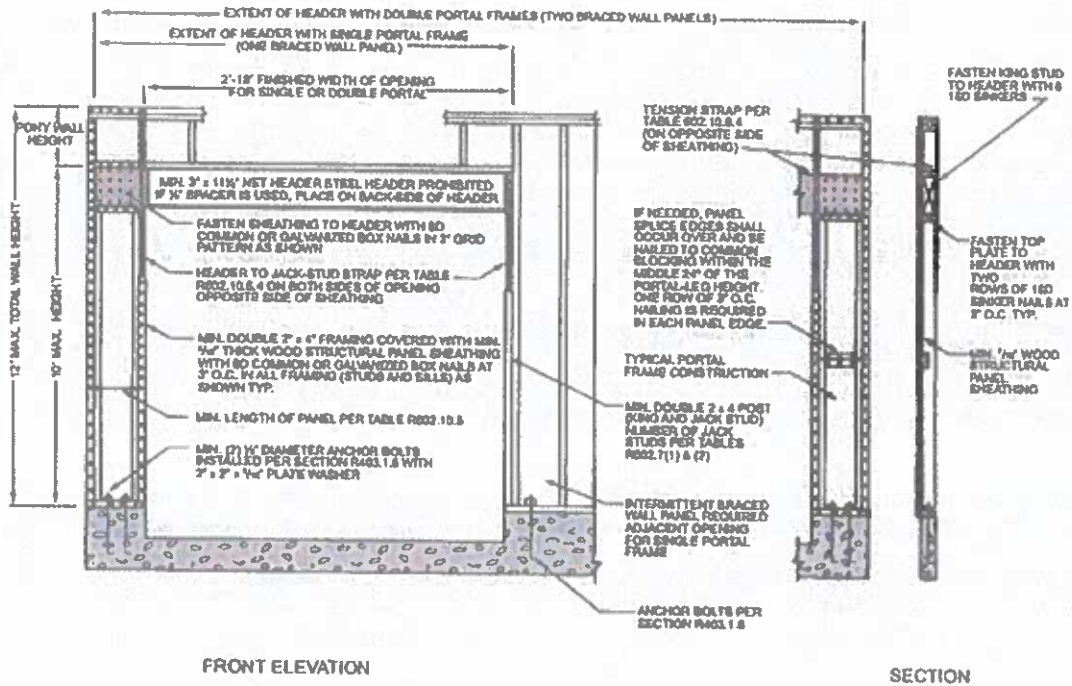
CHAPTER 6 WALL CONSTRUCTION



For SI: 1 inch = 25.4 mm, 1 foot = 304.8 mm.

FIGURE R602.10.6.2
 METHOD PFH—PORTAL FRAME WITH HOLD-DOWNS

CHAPTER 6 WALL CONSTRUCTION



For SI: 1 inch = 25.4 mm, 1 foot = 304.8 mm.

FIGURE R602.10.6.3
METHOD PFG—PORTAL FRAME AT GARAGE DOOR OPENINGS IN SEISMIC DESIGN CATEGORIES A, B AND C