



COMMUNITY MEETING

Wednesday, April 9th

LEAVENWORTH AREA, CYCLE 3
Chelan County Fire District #3

Deanna Walter, Chelan County Assessor





AGENDA

- **Staff Introductions**
- **Market Trends**
- **Property Values**
- **Question & Answer**





SAVE *the* DATE!

The **Chelan County Assessor's Office** invites you to join us at one of our Spring Community Meetings. Please join us to learn more about how we determine the value of property and the trends we are seeing for the 2014 Assessment year.

Choose the location nearest you.

Wednesday, April 9th, 7 to 8 pm

Chelan County Fire District #3 Station
228 Chumstick Highway, Leavenworth

Thursday, April 10th, 7 to 8 pm

Chelan County Fire District #9 Station
21696 Lake Wenatchee Hwy, Lake Wenatchee

Tuesday, April 15th, from 7 to 8 pm

Manson Grange Hall
157 Wapato Way, Manson

Wednesday, April 23rd, from 7 to 8 pm

Chelan City Hall
135 E Johnson, Chelan

Wednesday, May 14th, from 7 to 8 pm

Cashmere Riverside Center
201 Riverside Drive, Cashmere

Thursday, May 15th, from 7 to 8 pm

Wenatchee Community Center-Social Hall
504 S Chelan, Wenatchee

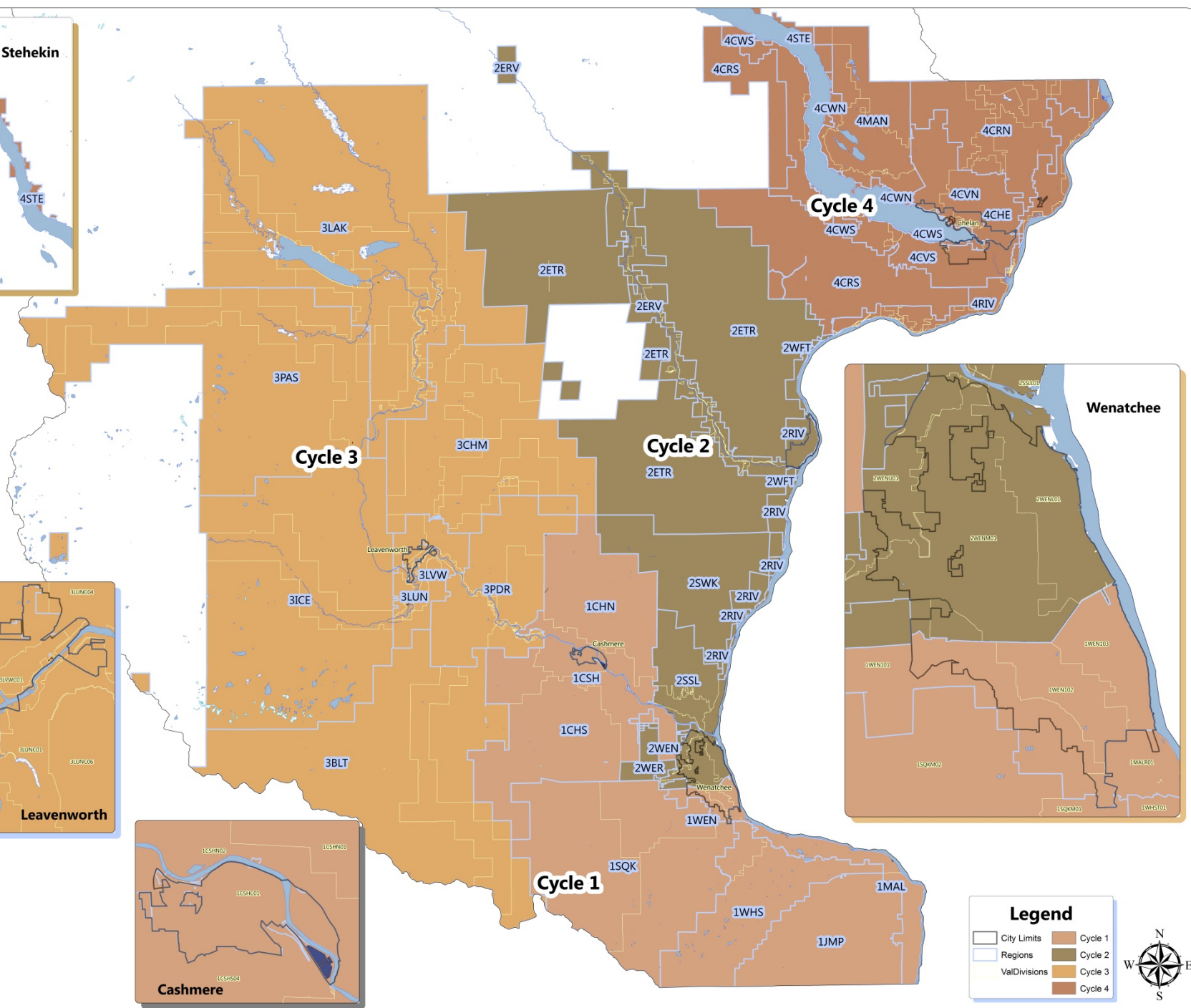
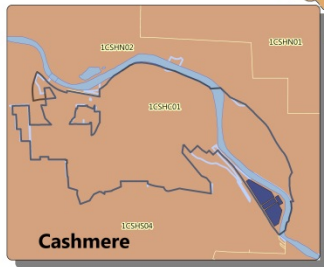
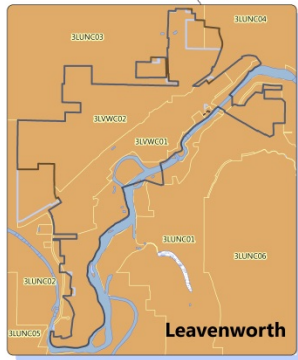
Wednesday, May 21st, from 7 to 8 pm

Entiat Grange Hall
14105 Kinzel Street, Entiat

Thursday, May 22nd, from 7 to 8 pm

Chelan County Fire District #1 Station
206 Easy Street, Wenatchee

For more information call (509) 667-6365 or visit
www.co.chelan.wa.us/assessor



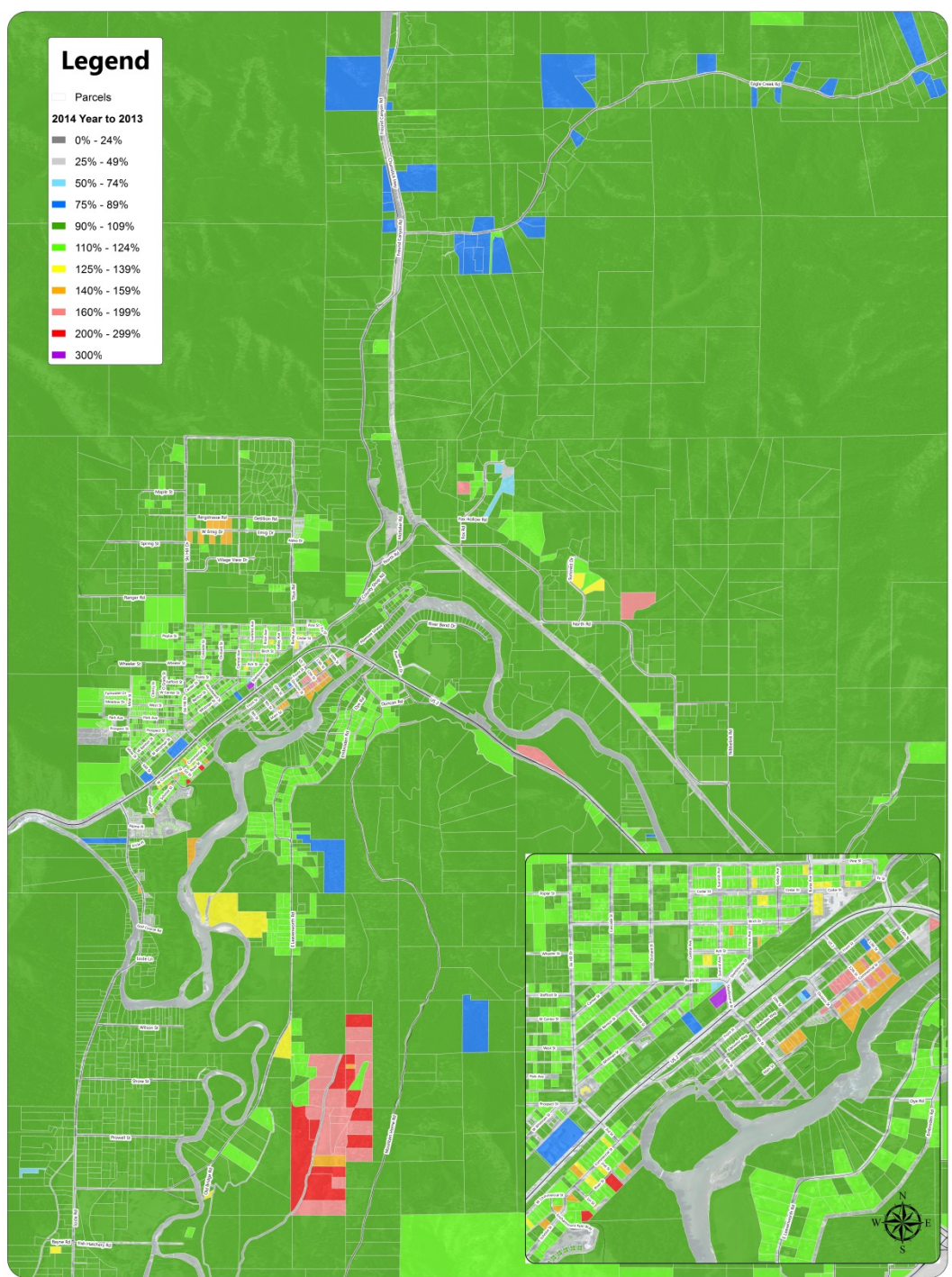
Legend

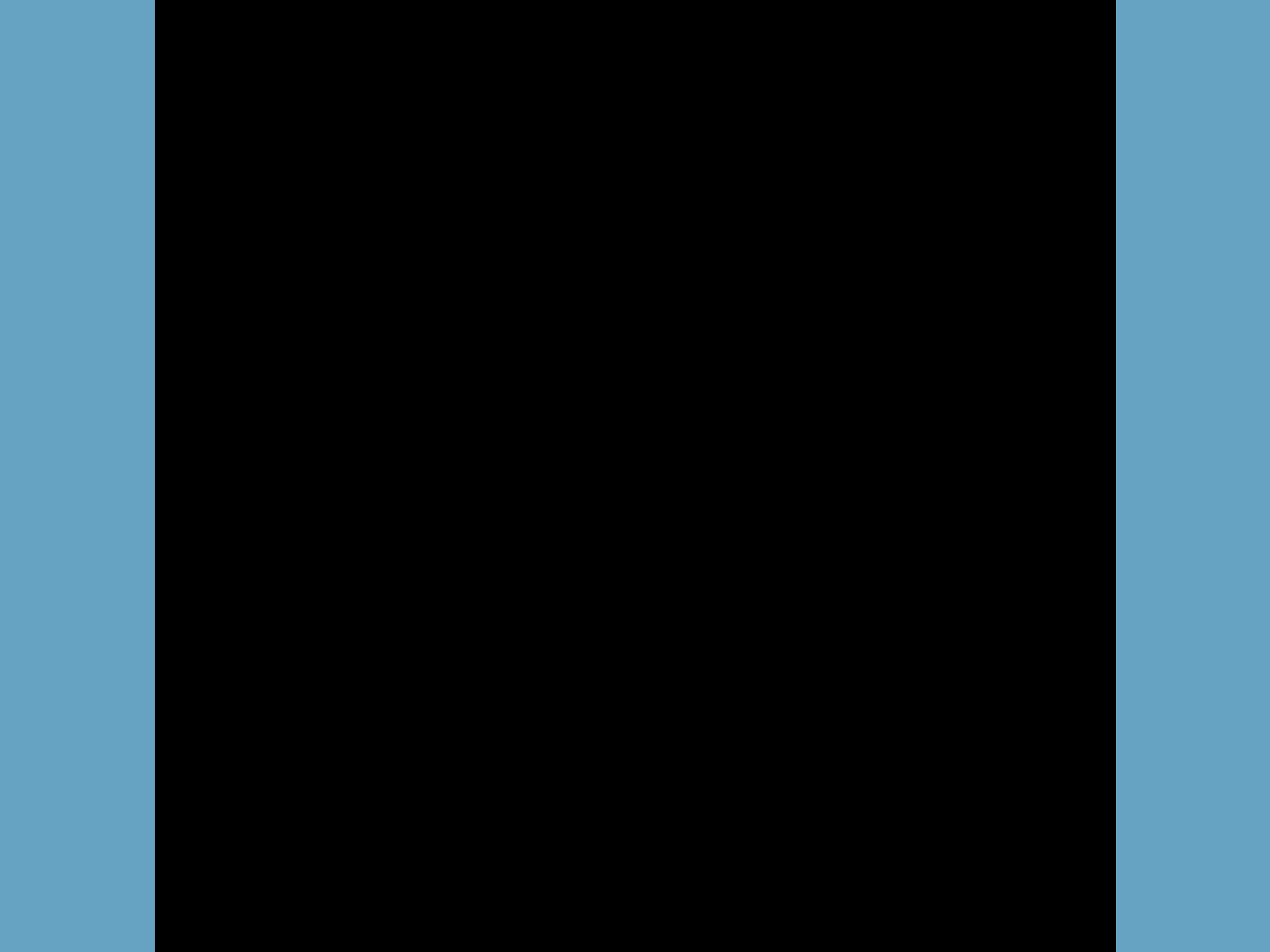
- City Limits
- Regions
- ValDivisions
- Cycle 1
- Cycle 2
- Cycle 3
- Cycle 4

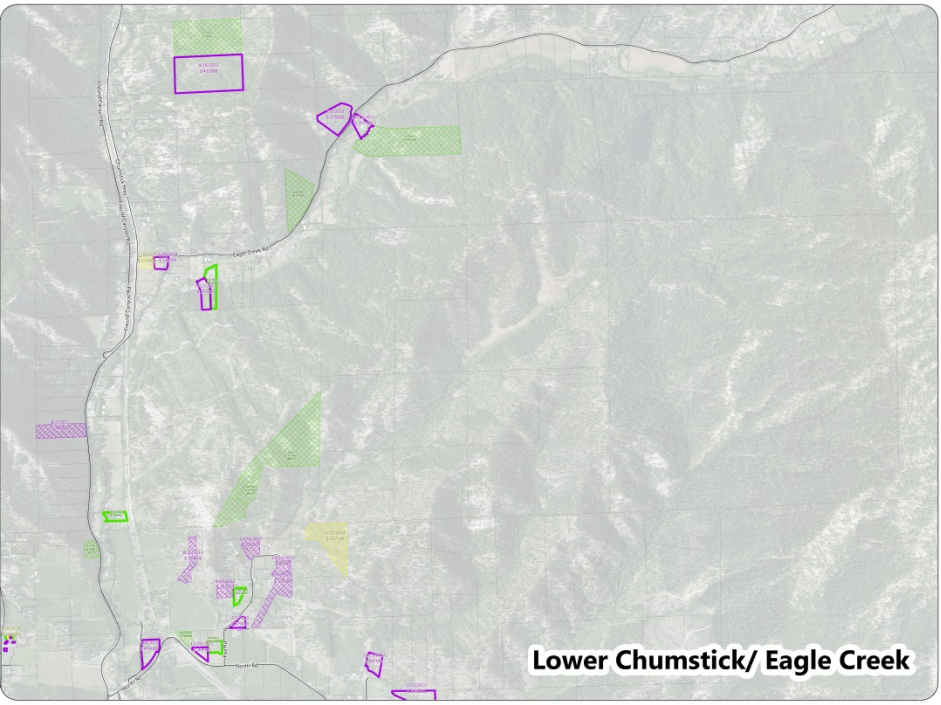
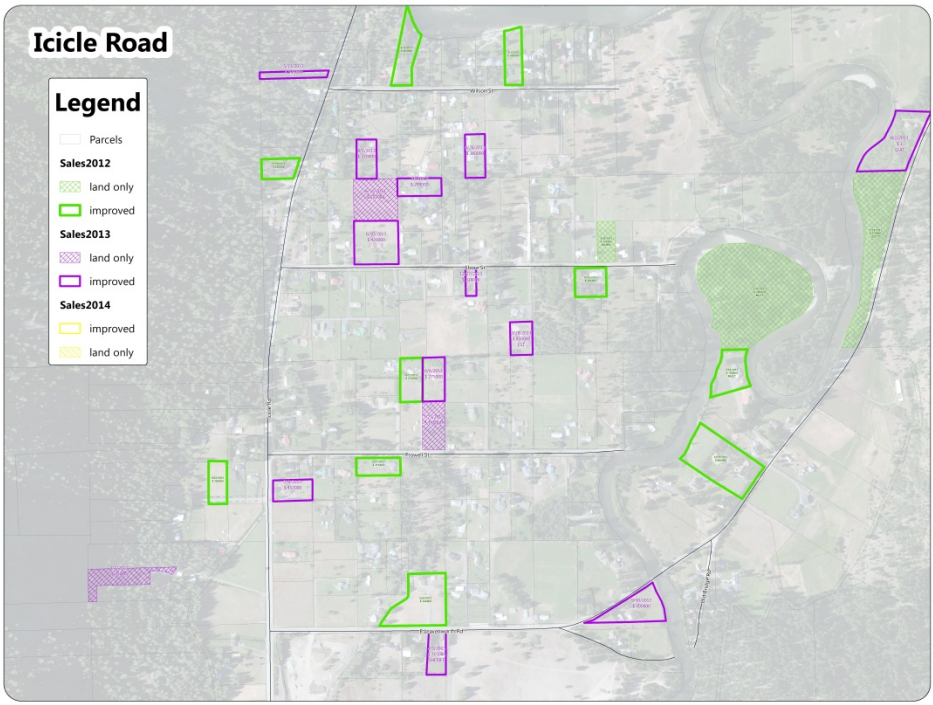
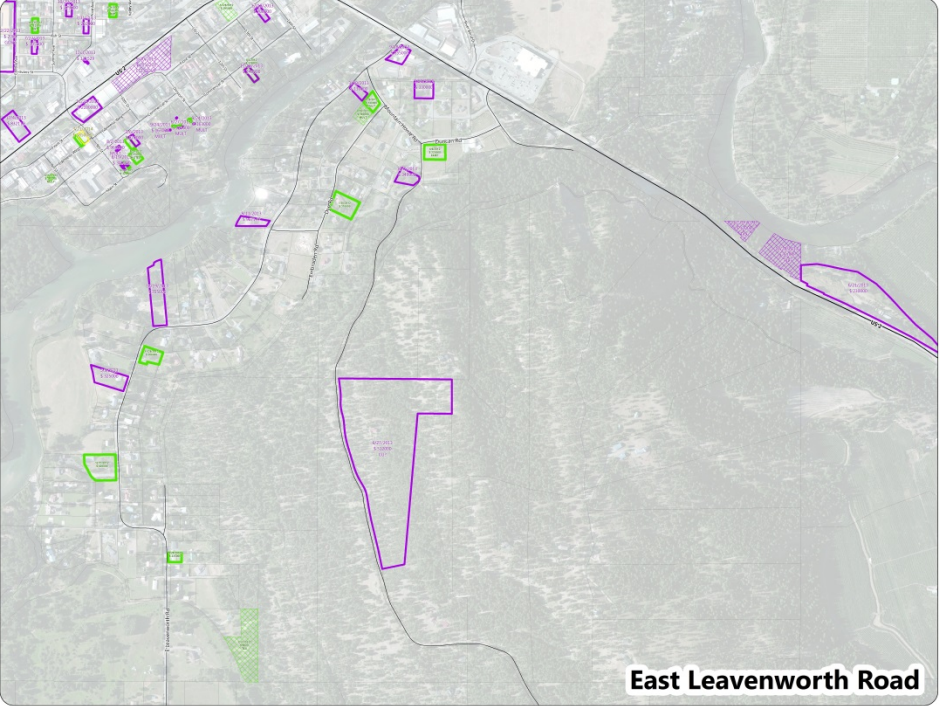
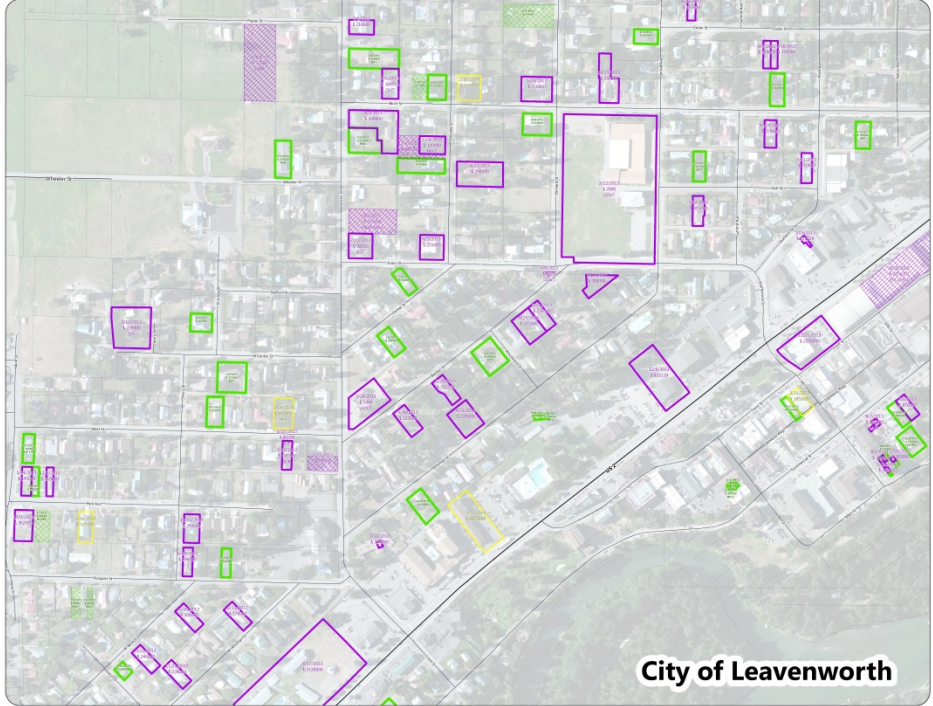


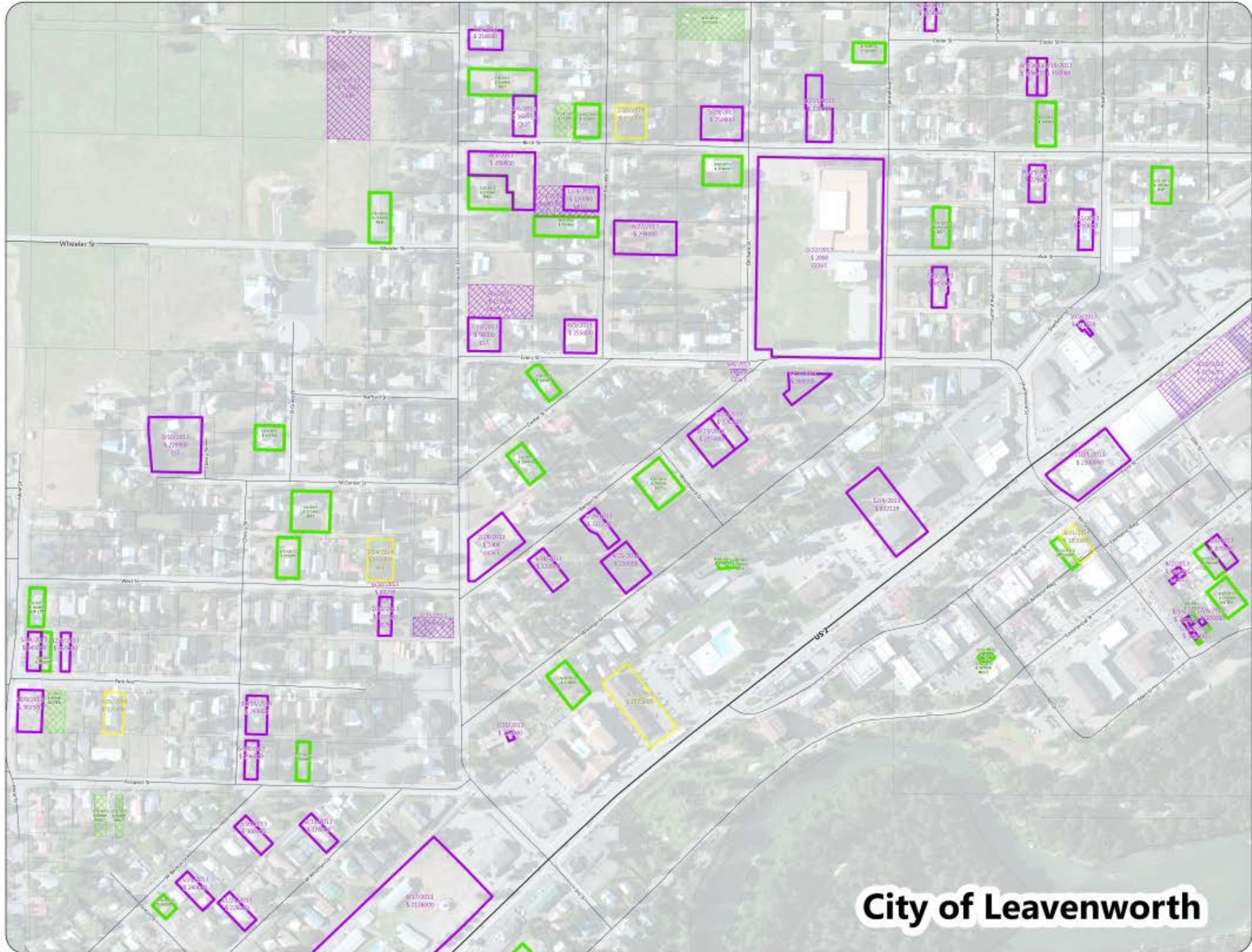
Legend

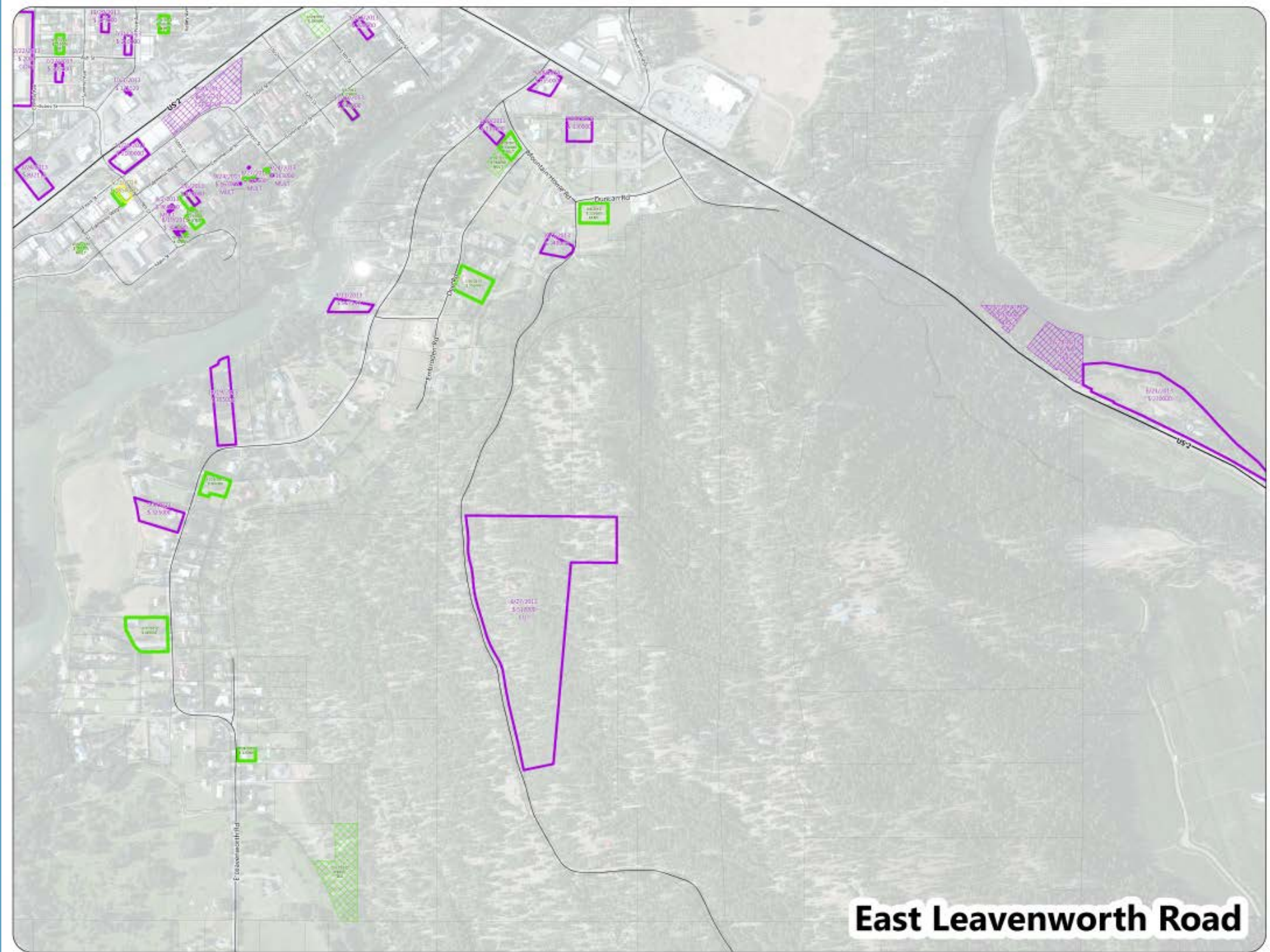
- Parcels
- 2014 Year to 2013
 - 0% - 24%
 - 25% - 49%
 - 50% - 74%
 - 75% - 89%
 - 90% - 109%
 - 110% - 124%
 - 125% - 139%
 - 140% - 159%
 - 160% - 199%
 - 200% - 299%
 - 300%











East Leavenworth Road

Icicle Road

Legend

Parcels

Sales2012

land only

improved

Sales2013

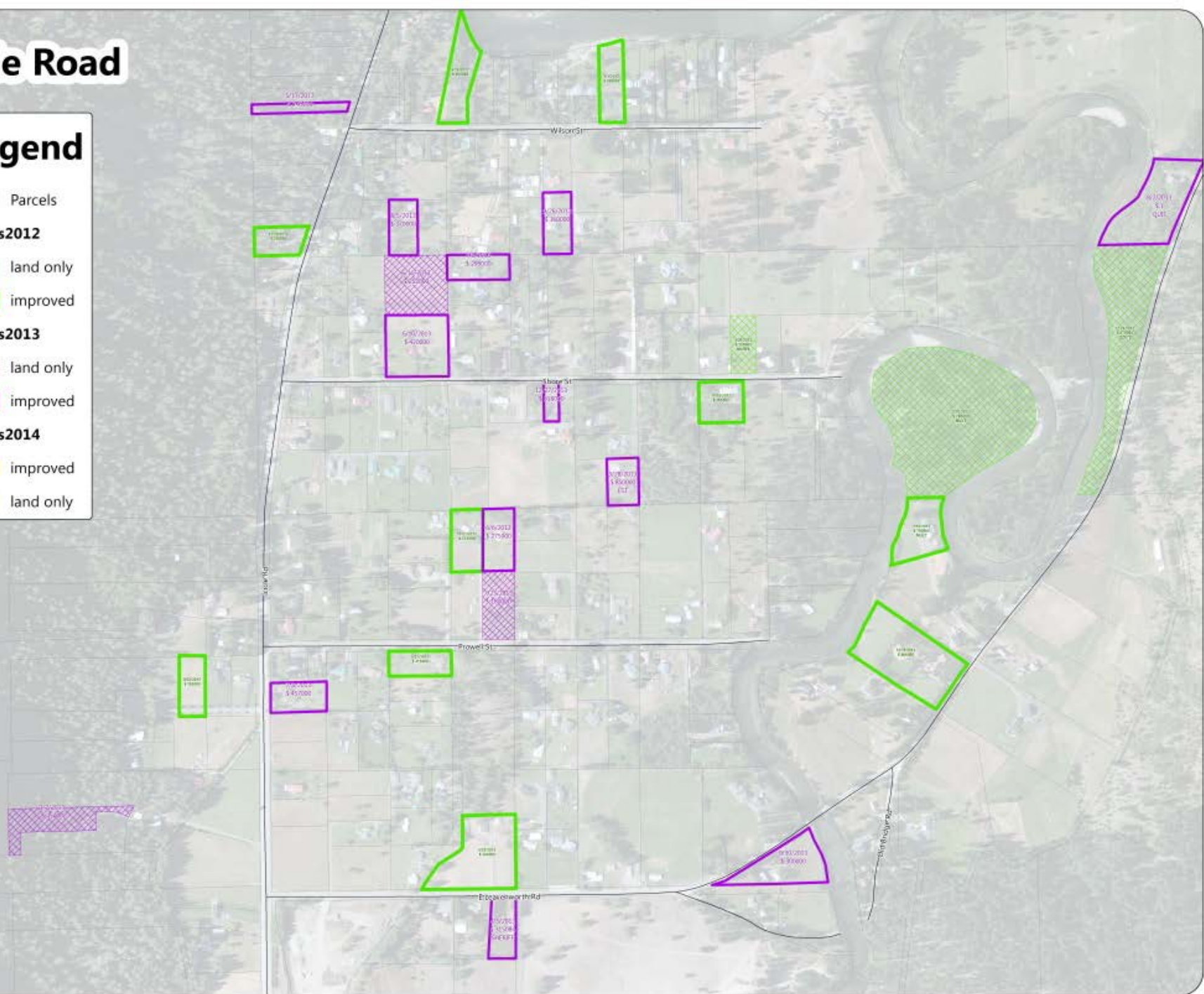
land only

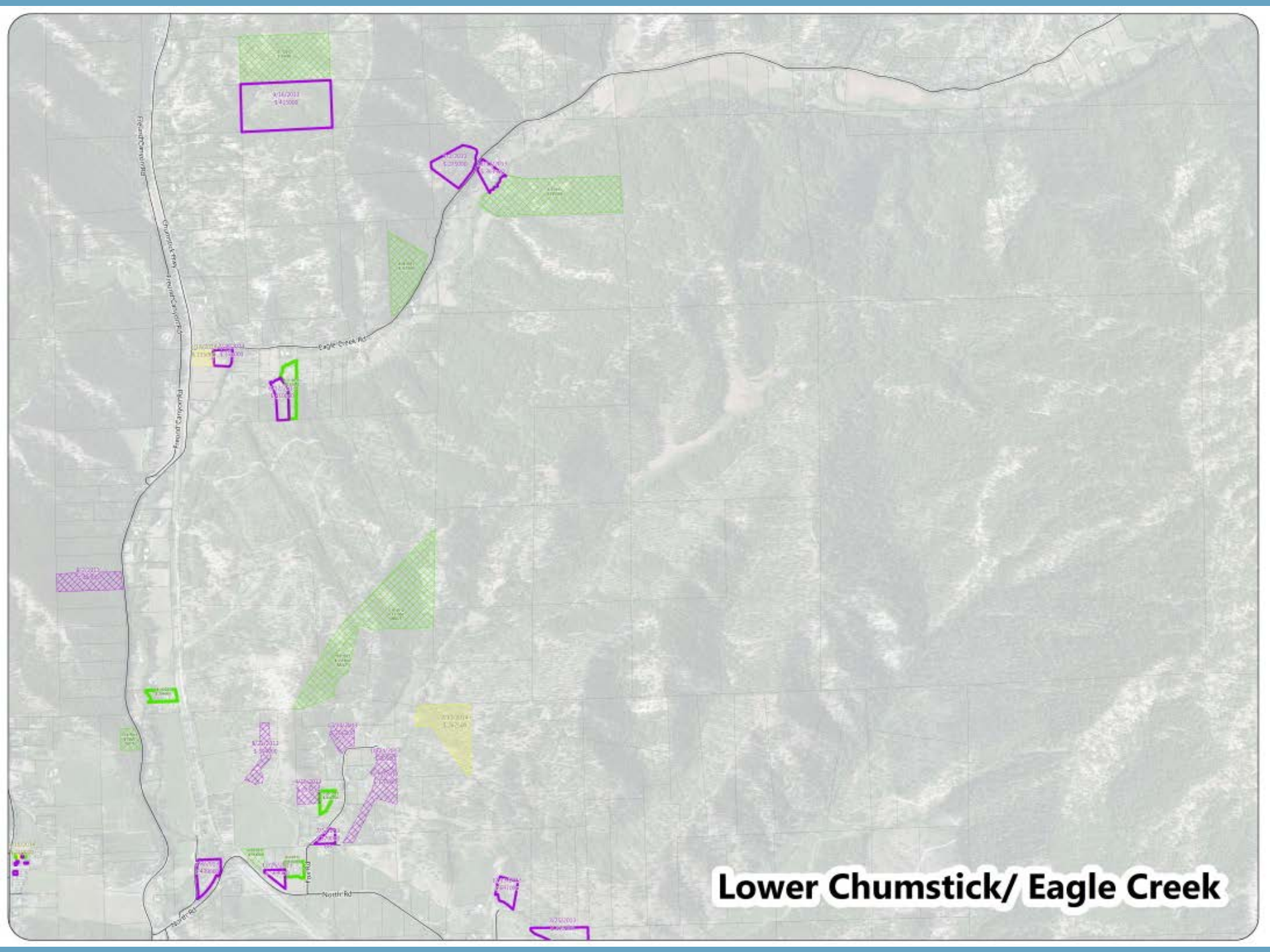
improved

Sales2014

improved

land only





Lower Chumstick/ Eagle Creek



CHELAN COUNTY ASSESSOR'S OFFICE
WELCOME



Deanna Walter, Assessor

Featured

Chelan County is now annually updating all properties according to market sales, and continues to do physical inspections of every property on a 4-year cycle.

Our office is responsible for...

Determining the value of all taxable real and personal property in the county on a fair and equitable basis, along with maintaining accurate and accessible property information, providing timely and accurate assessments for tax purposes, and a detailed parcel map showing all parcels within the County.

These annual valuations reflect the market value estimate for the specified property as of January 1 of the assessment year. Except with respect to new construction (inspected every June & July), the January 1 assessed value is used as the basis for calculating the property taxes that are to be levied and paid in the following tax year. Washington State law requires property to be assessed at 100% of market value.

Your property taxes fund state and county services, including roads, transit, schools, libraries, parks, hospitals, fire and rescue, law enforcement, environmental and social services. Information such as parcel numbers, ownership, tax codes, and assessed valuations for all property within the county can be obtained on-line through the [property search](#) of the Assessor's web site, or by calling the assessor's office during business hours.

Quick Links

- [Document Search](#)
- [Parcel Search](#)
- [Property Tax Summary Reports](#)
- [Homeowners Guide](#)
- [Go Paperless](#)
- [Exemptions for Senior Citizens/ Disabled Persons](#)
- [Request for Property Valuation Review](#)
- [Address Change Request Form](#)

Map Links

- [Online Mapping](#)
- [Online Mapping Help](#)

Archived Historical

- [Plats](#)
- [Sections](#)

**Assessor
FTP Site**

Upcoming Meetings & Events

- [2014 Community Meetings](#)
- [2014 Senior Exemption Events](#)

**MONTHLY SALES
REPORTS**



CONTACT INFORMATION

Deanna Walter
Chelan County Assessor

509.667.6365

www.co.chelan.wa.us/assessor

