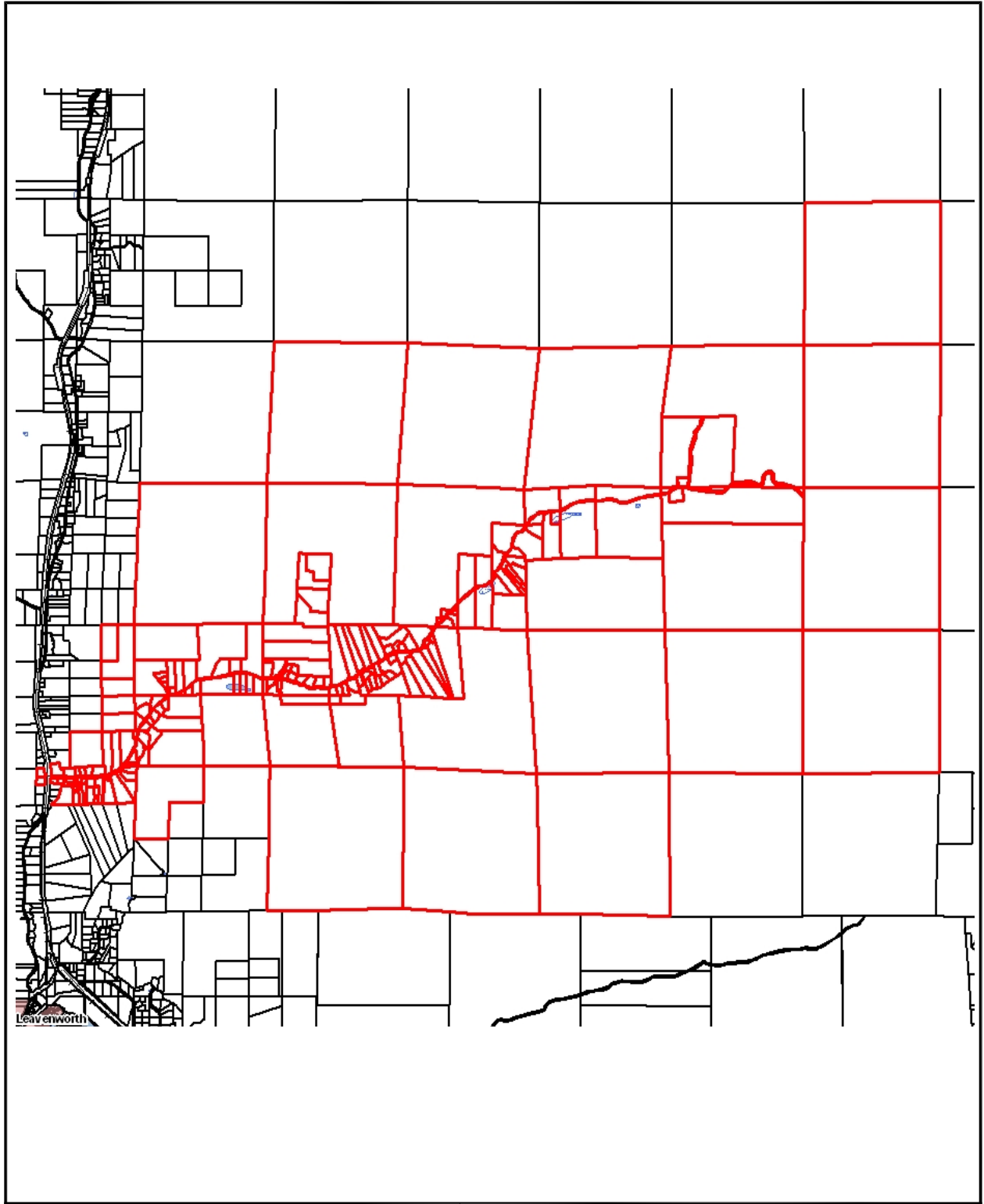


\\Roads\projects\CRP\CRP612_Eagle_Creek_Road\Documents\Open House Survey\612 Mailing Area Map.dwg



Chelan County
Public Works Department
316 Washington Street, Suite 402
Wenatchee, Washington, 98801

Phone: (509) 667-6415
Website: www.co.chelan.wa.us



Eagle Creek Road Improvement Project
February 8, 2008 Mailing Area