

## **APPENDIX**

### **Appendix**

- I. Appendix A – Land Use**
- II. Appendix B – Countywide Sidewalks**
- III. Appendix C – Freight and Goods Transportation Maps**
- IV. Appendix D – Project Prioritization Criteria**
- V. Appendix E – 20-Year Project List (includes Scoring)**
- VI. Appendix F – Presentations to The Chelan County Board of Commissioners**
- VII. Appendix G – Public Open House Materials and Comments**
- VIII. Appendix H – WSDOT Facility Level of Service Analysis**

## I. APPENDIX A – LAND USE

This appendix shows population projections and land use capacity analysis for the County. The following tables and figures were taken from the Land Use Capacity Analysis and Land Use Appendices to the Land Use Element of the Comprehensive Plan Update.

Jurisdiction Specific Population Projections based on Share of Population Growth Between 1990 and 2010  
Using OFM 2012 Medium Projection for Chelan County

	Share of 1990-2010 Population Growth	Adjusted Population Allocations	2014 OFM Estimate	2015 Projection	2016 Projection	2017 Projection	2035 Projection	2036 Projection	2016-2036 20 year change	2037 Projection	2017-2037 20 year change	2040 Projection
Manson UGA	3.69%	<b>3.69%</b>	2,032	2,064	2,089	2,115	2,507	2,523	433	2,538	423	<b>2,583</b>
Chelan UGA*	2.88%	<b>3.61%</b>	4,384	4,416	4,440	4,465	4,849	4,864	424	4,880	414	<b>4,924</b>
Entiat UGA	2.01%	<b>2.01%</b>	1,143	1,161	1,174	1,188	1,402	1,411	237	1,420	231	<b>1,444</b>
Leavenworth UGA	1.71%	<b>1.71%</b>	2,404	2,419	2,431	2,442	2,624	2,631	201	2,638	196	<b>2,659</b>
Peshastin UGA	0.32%	<b>0.32%</b>	671	674	676	678	712	714	38	715	37	<b>719</b>
Cashmere UGA	2.88%	<b>2.88%</b>	3,742	3,767	3,787	3,807	4,112	4,125	338	4,137	330	<b>4,172</b>
Wenatchee UGA	53.09%	<b>53.09%</b>	38,454	38,921	39,279	39,649	45,286	45,517	6,238	45,741	6,093	<b>46,389</b>
Urban	66.58%	<b>67.31%</b>	52,830	53,422	53,876	54,344	61,491	61,784	7,908	62,069	7,724	<b>62,890</b>
Rural	33.42%	<b>32.69%</b>	21,470	21,758	21,978	22,206	25,677	25,819	3,841	25,957	3,752	<b>26,356</b>
<b>TOTAL</b>	<b>100.00%</b>	<b>100.00%</b>	<b>74,300</b>	<b>75,180</b>	<b>75,854</b>	<b>76,550</b>	<b>87,168</b>	<b>87,603</b>	<b>11,749</b>	<b>88,026</b>	<b>11,476</b>	<b>89,246</b>

\*Modified based on population changes from 1990-2015

Table B-4: Population & Dwelling Needs

Regions	Persons per household*	2017 Population	Estimated minimum dwellings	2037 Population	Estimated minimum dwellings	20 year increase in dwellings
Cashmere UGA	2.66	3,807	1,431	4,137	1,555	<b>124</b>
Chelan UGA	2.38	4,465	1,876	4,880	2,050	<b>174</b>
Entiat UGA	2.64	1,188	450	1,420	538	<b>88</b>
Leavenworth UGA	2.16	2,442	1,131	2,638	1,221	<b>90</b>
Manson UGA	2.58	2,115	820	2,538	984	<b>164</b>
Peshastin UGA	2.58	678	263	715	277	<b>14</b>
Wenatchee UGA	2.53	39,649	15,672	45,741	18,079	<b>2,407</b>
Remaining Chelan County	2.57	22,206	8,640	25,957	10,100	<b>1,460</b>
<b>TOTAL</b>		<b>76,550</b>	<b>30,283</b>	<b>88,026</b>	<b>34,683</b>	<b>4,521</b>

### Current Land Uses

The following breakdown of land uses was derived from the Assessor’s land use coding system. It provides an understanding of the division of land uses within each City, UGA and the County. The City of

Wenatchee has provided a separate analysis, attached, considered as part of this document and incorporated in the Findings of Facts and Conclusions.

Classifications	City of Cashmere		Cashmere UGA		City of Chelan		Chelan UGA	
	Acres	Percent	Acres	Percent	Acres	Percent	Acres	Percent
Single-Family Units	264	44.8%	254	71.3%	1515	38.7%	1184	57.1%
Multi-unit and Mobile Home Parks	19	3.2%	16	4.5%	108	2.8%	77	3.7%
Residential Condos	1	0.2%		0.0%	28	0.7%	3	0.1%
Vacation & Cabin		0.0%		0.0%	78	2.0%	5	0.2%
Hotel/Motel/Lodging; amusement, recreational, resort	1	0.2%	2	0.6%	233	6.0%		0.0%
Industrial	71	12.1%	4	1.1%	61	1.6%	12	0.6%
Commercial/Retail, professional, government, etc	168	28.5%	50	14.0%	296	7.6%	103	5.0%
Agricultural	65	11.0%	28	7.9%	221	5.7%	362	17.5%
Undeveloped	0	0.0%	2	0.6%	1,371	35.1%	328	15.8%
<b>TOTALS</b>	<b>589</b>	<b>100%</b>	<b>356</b>	<b>100%</b>	<b>3,911</b>	<b>100%</b>	<b>2,074</b>	<b>100%</b>

Classifications	City of Entiat		Entiat UGA		City of Leavenworth		Leavenworth UGA	
	Acres	Percent	Acres	Percent	Acres	Percent	Acres	Percent
Single-Family Units	575	48.1%	14	60.9%	284	40.9%	274	52.8%
Multi-unit and Mobile Home Parks	42	3.5%	0	0.0%	5	0.7%	26	5.0%
Residential Condos	0	0.0%	0	0.0%	27	3.9%	2	0.4%
Vacation & Cabin	0	0.0%	0	0.0%	0	0.0%	3	0.6%
Hotel/Motel/Lodging; amusement, recreational, resort	1	0.1%	2	8.7%	26	3.7%	40	7.7%
Industrial	54	4.5%	0	0.0%	7	1.0%	37	7.1%
Commercial/Retail, professional, government, etc	175	14.6%	7	30.4%	312	45.0%	42	8.1%
Agricultural	12	1.0%	0	0.0%	10	1.4%	34	6.6%
Undeveloped	336	28.1%	0	0.0%	23	3.3%	61	11.8%
<b>TOTALS</b>	<b>1,195</b>	<b>100%</b>	<b>23</b>	<b>100%</b>	<b>694</b>	<b>100%</b>	<b>519</b>	<b>100%</b>

Classifications	Manson UGA		Peshastin UGA		Remaining County	
	Acres	Percent	Acres	Percent	Acres	Percent
Single-Family Units	623	49.4%	246	49.9%	51290	5.6%
Multi-unit and Mobile Home Parks	101	8.0%	10	2.0%	270	0.0%
Residential Condos	104	8.2%	1	0.2%	137	0.0%
Vacation & Cabin	7	0.6%		0.0%	1,2857	1.4%
Hotel/Motel/Lodging; amusement, recreational, resort	2	0.2%	1	0.2%	1,218	0.1%
Industrial	1	0.1%	61	12.4%	2,046	0.2%
Commercial/Retail, professional, government, etc.	108	8.6%	56	11.4%	584,802*	63.7%*
Agricultural	288	22.8%	116	23.5%	173,456	18.9%
Undeveloped	28	2.2%	2	0.4%	91,896	10.0%
<b>TOTALS</b>	<b>1,262</b>	<b>100%</b>	<b>493</b>	<b>100%</b>	<b>917,970</b>	<b>100%</b>

\* 545,564 acres (or 59.4%) are government related; 4.3% commercial/retail



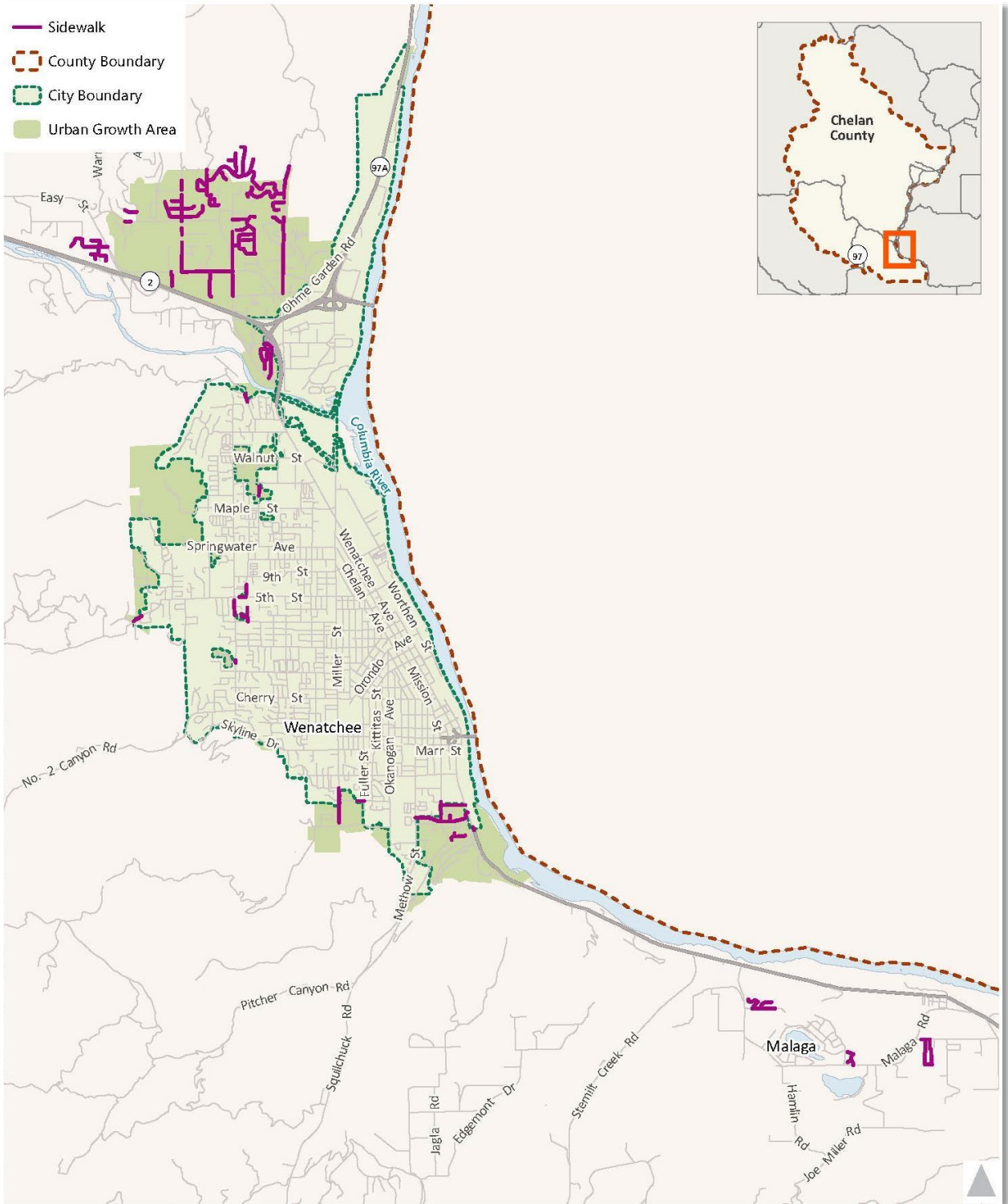
## II. APPENDIX B – COUNTYWIDE SIDEWALKS

### Existing Sidewalk Facilities (Manson)

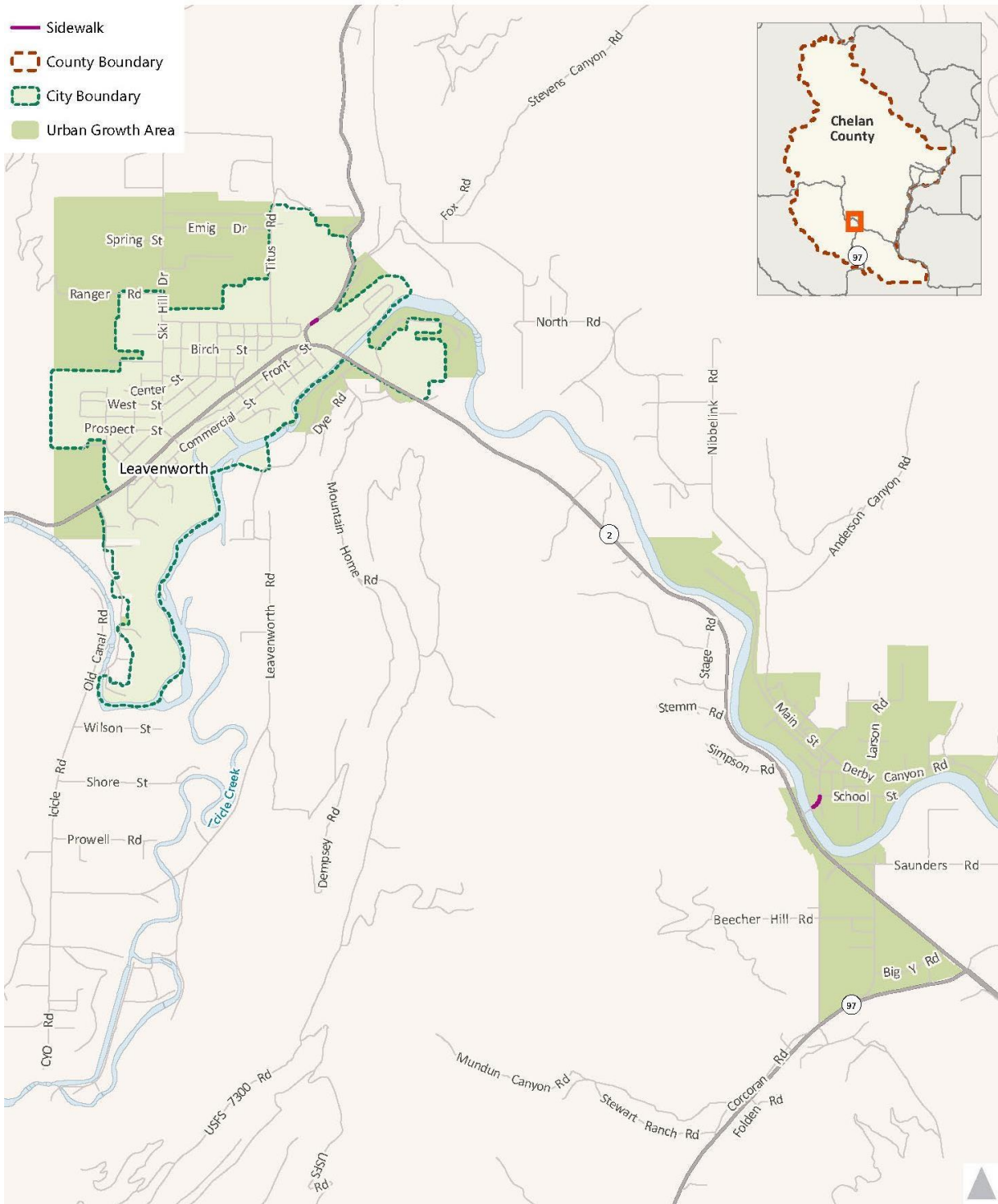
- Sidewalk
- County Boundary
- City Boundary
- Urban Growth Area



# Existing Sidewalk Facilities (Wenatchee/Sunnyslope and Malaga)



## Existing Sidewalk Facilities (Leavenworth and Peshastin)



### **III. APPENDIX C – FREIGHT AND GOODS TRANSPORTATION MAPS**

The following figures show Washington State’s Freight and Goods Transportation System classifications for Chelan County.

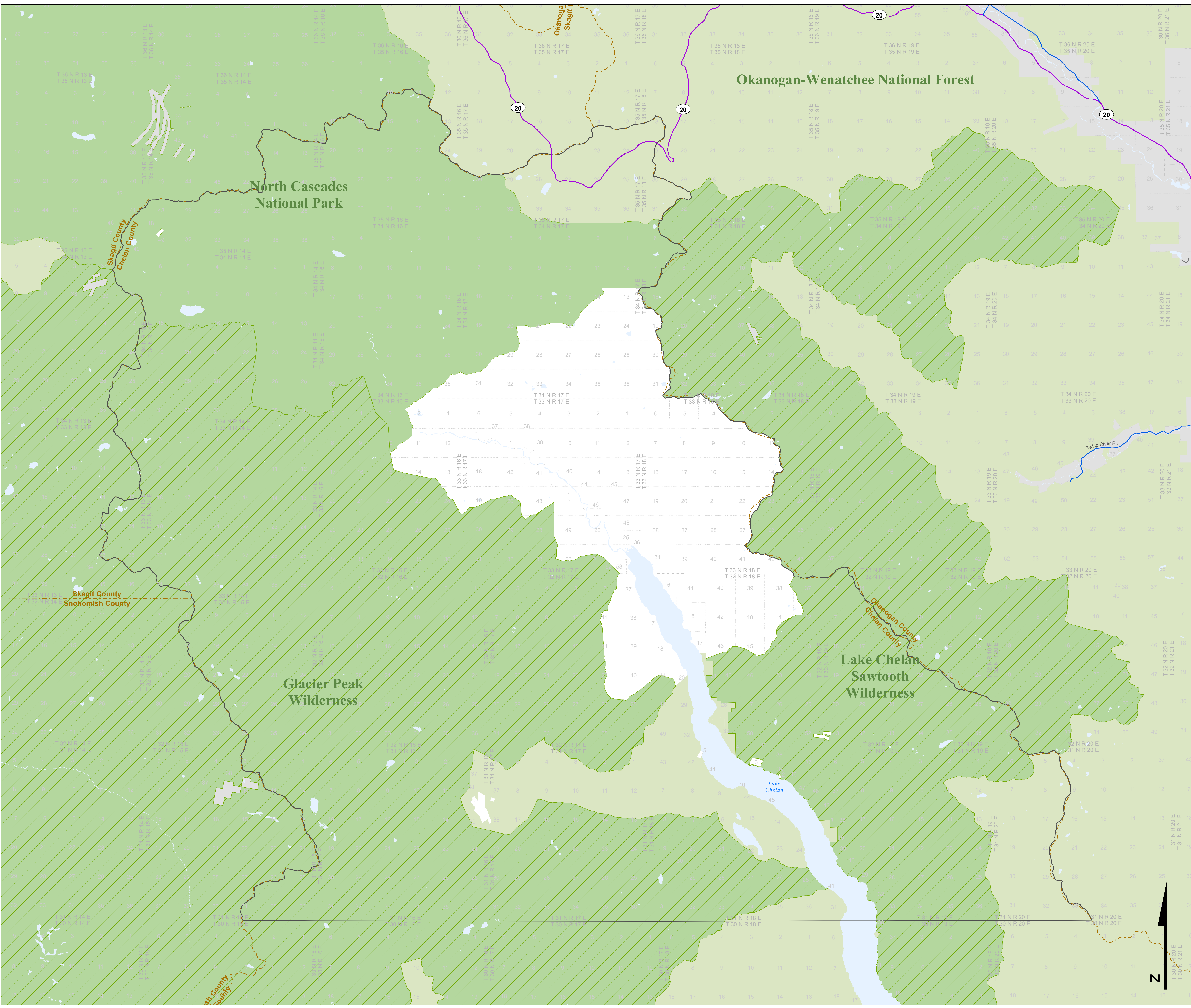
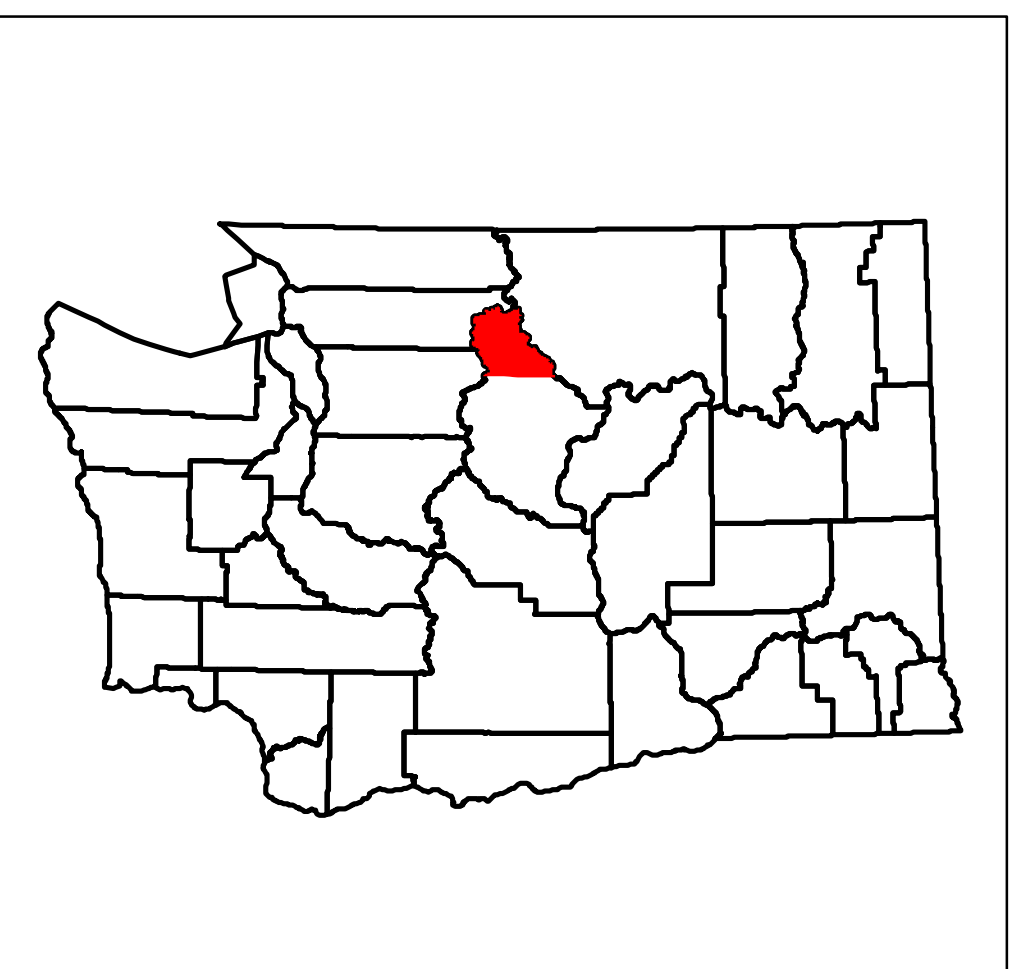
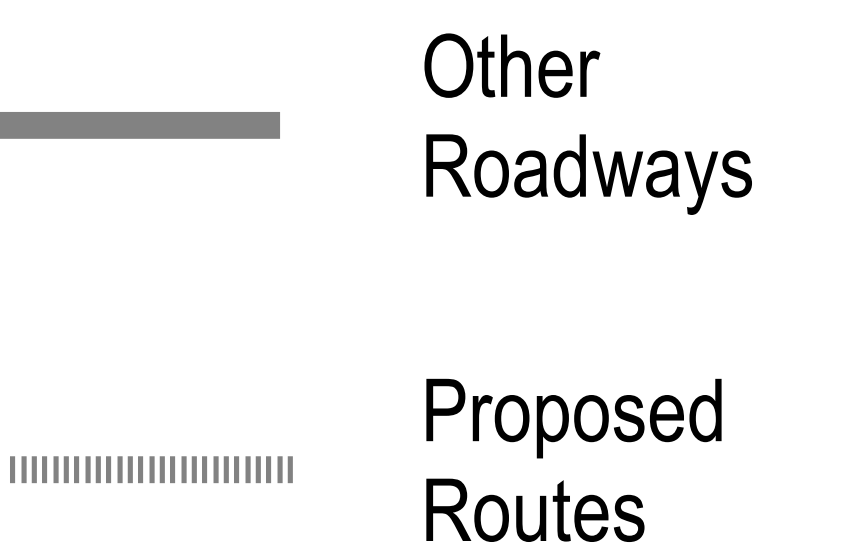
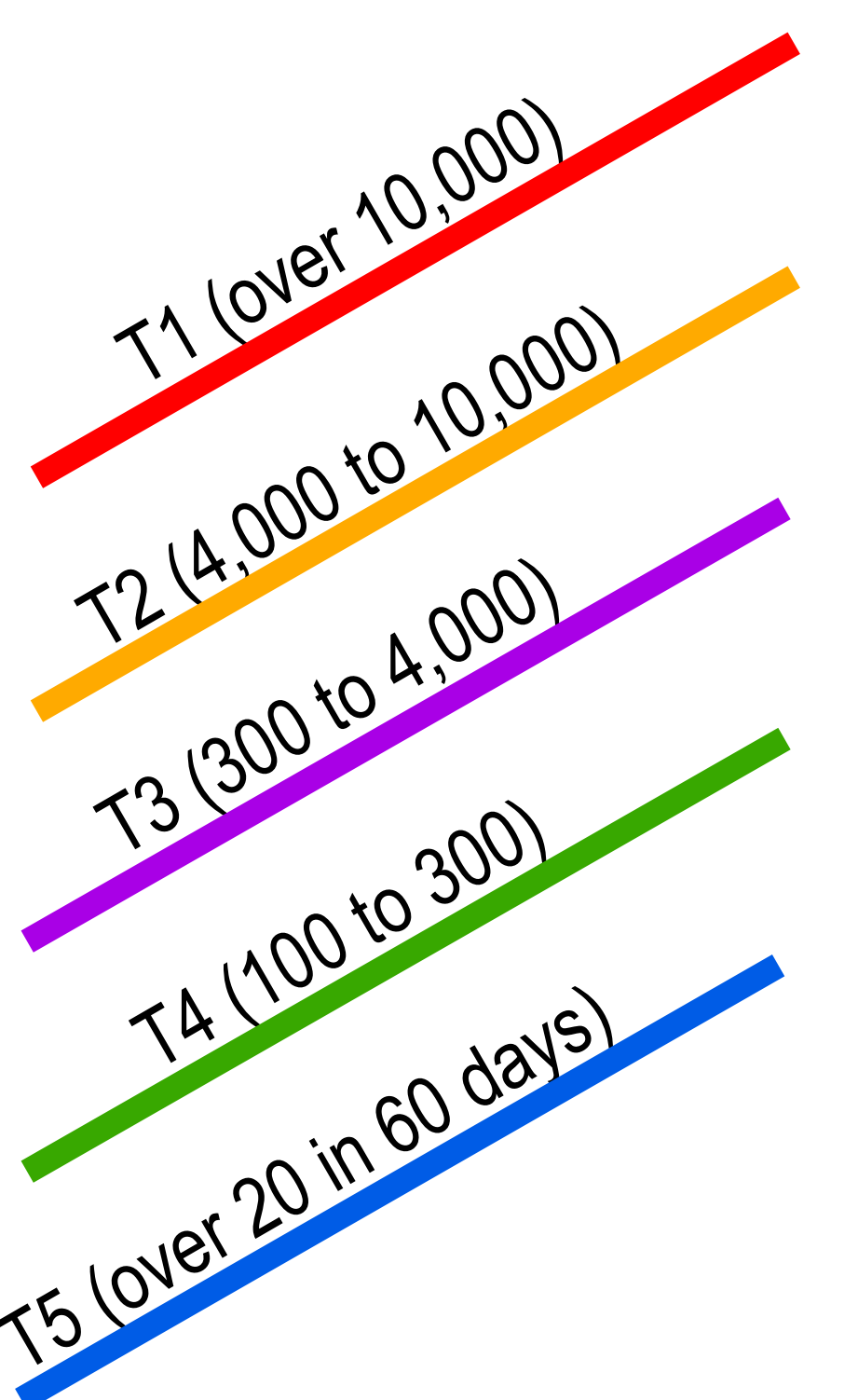


# Freight and Goods Transportation System

## Roadways 2015

WASHINGTON STATE DEPARTMENT OF TRANSPORTATION

TONNAGE CLASS  
T1 - T5  
ANNUAL TONS  
(in thousands)



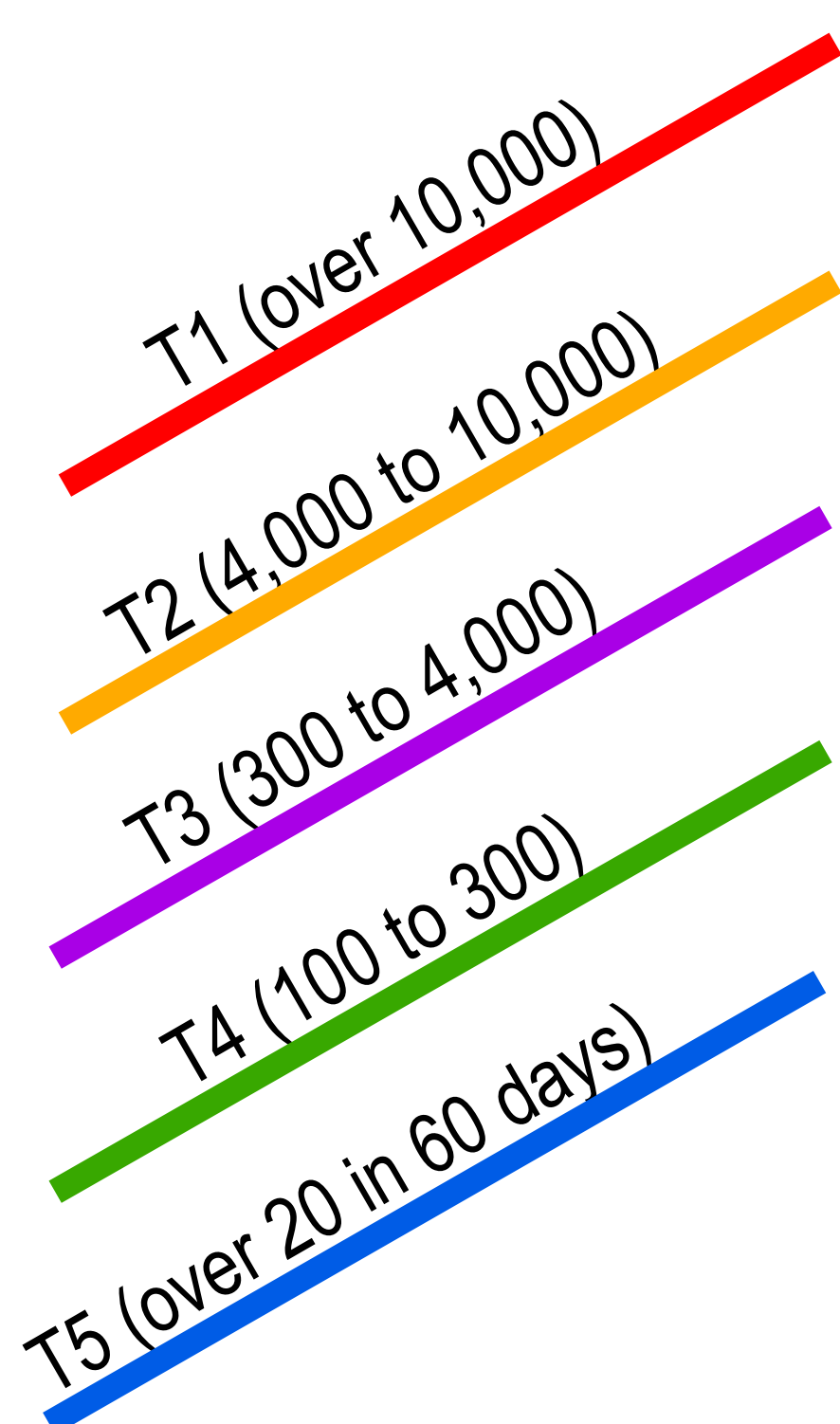


### Freight and Goods Transportation System

Roadways 2015

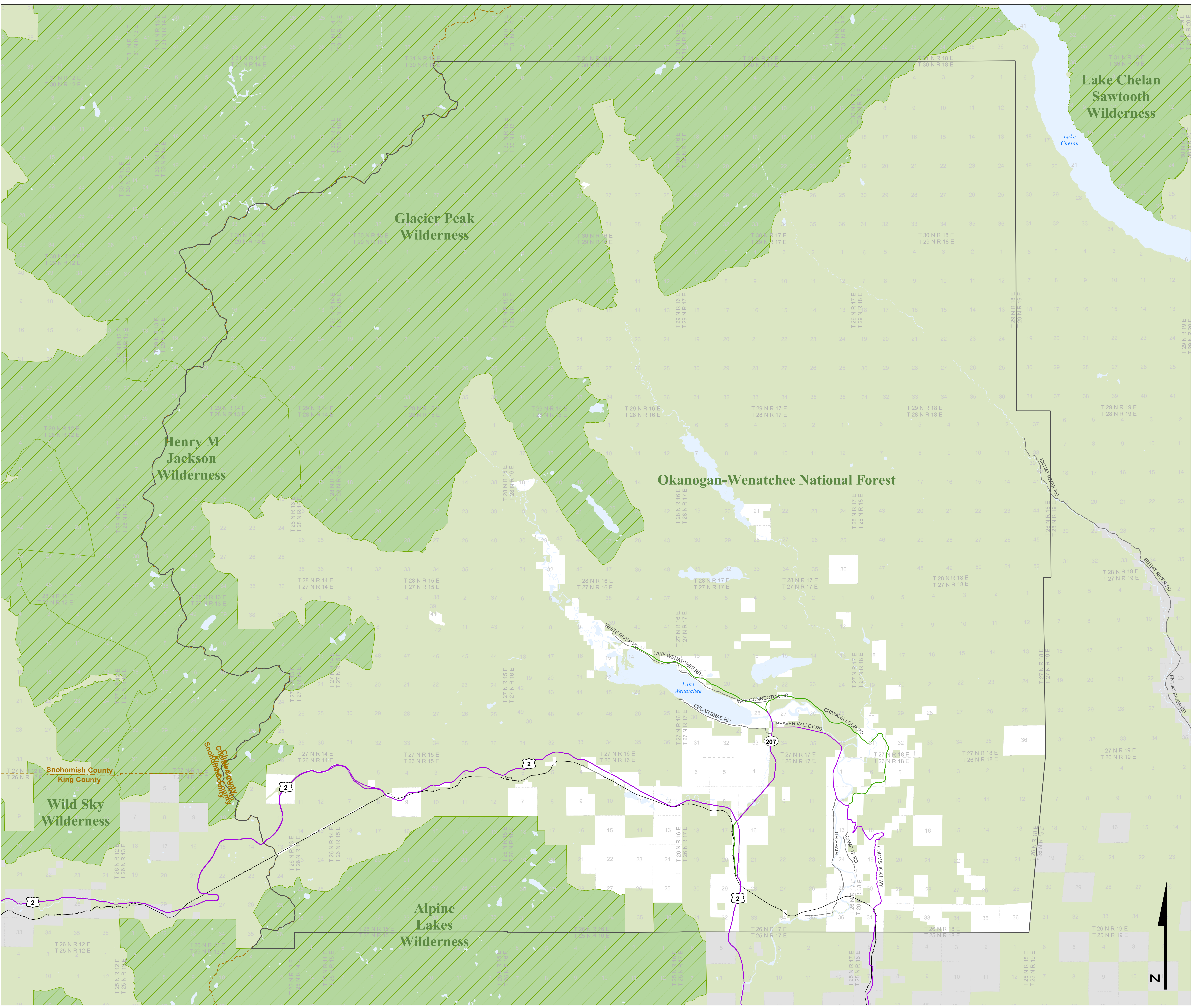
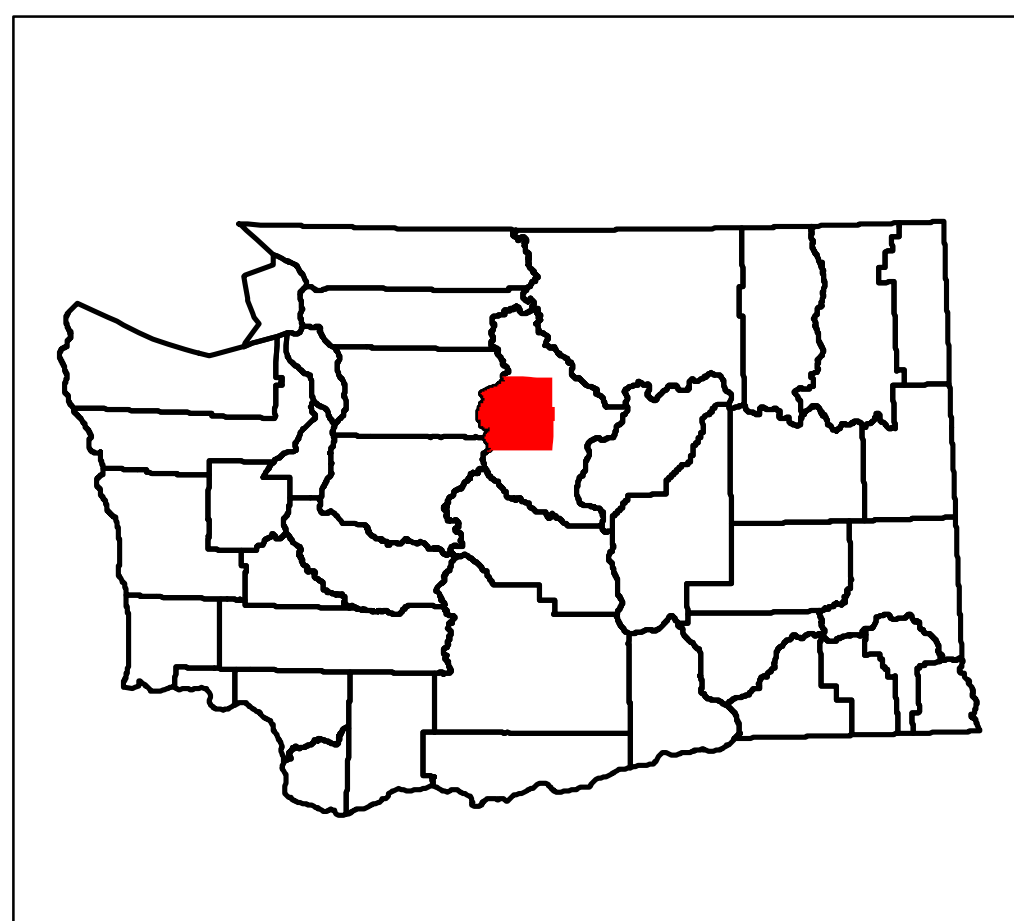
WASHINGTON STATE DEPARTMENT OF TRANSPORTATION

TONNAGE CLASS  
T1 - T5  
ANNUAL TONS  
(in thousands)



Other Roadways

Proposed Routes



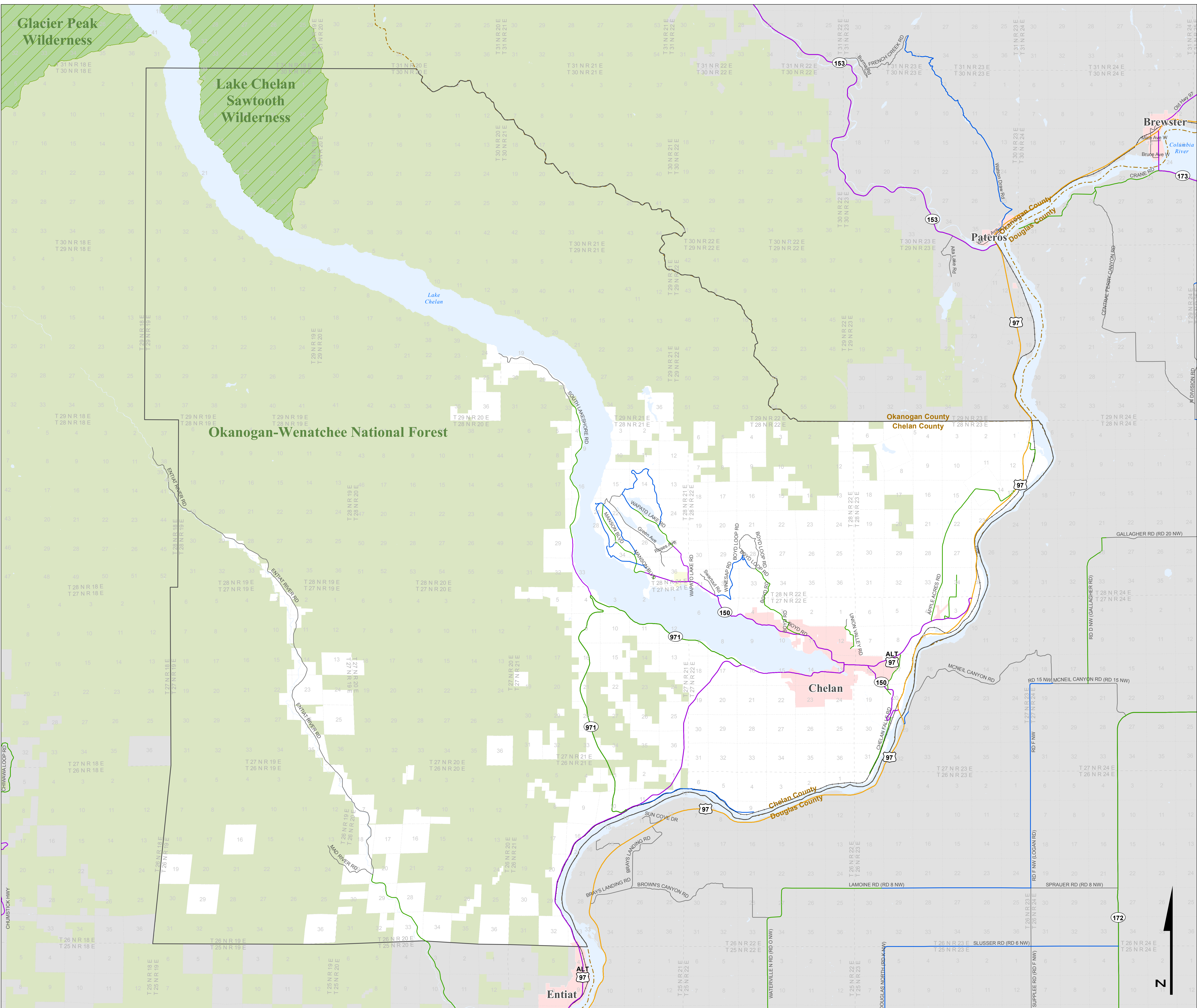
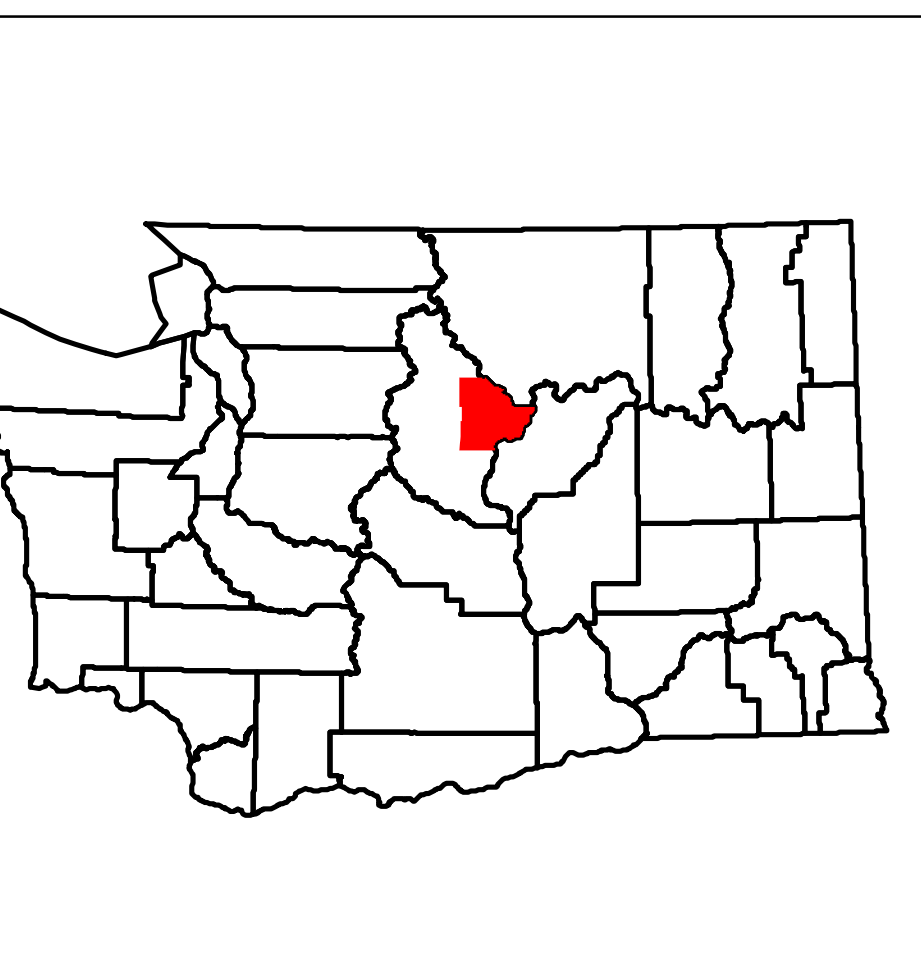
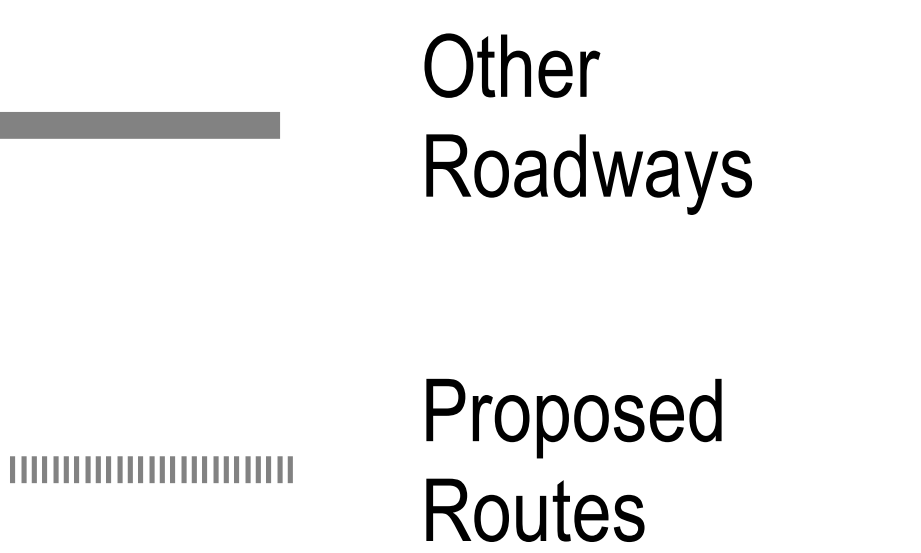
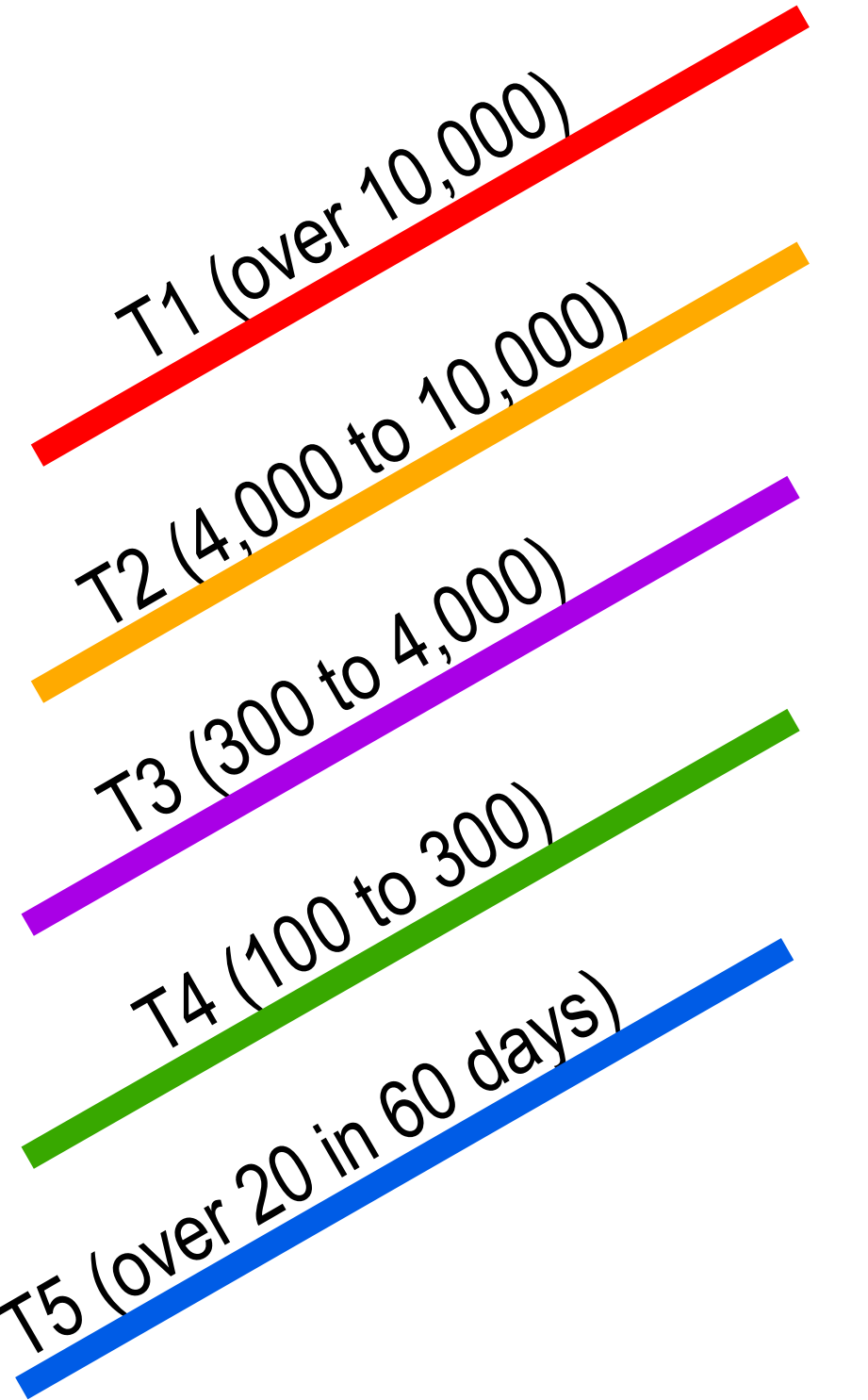


# Freight and Goods Transportation System

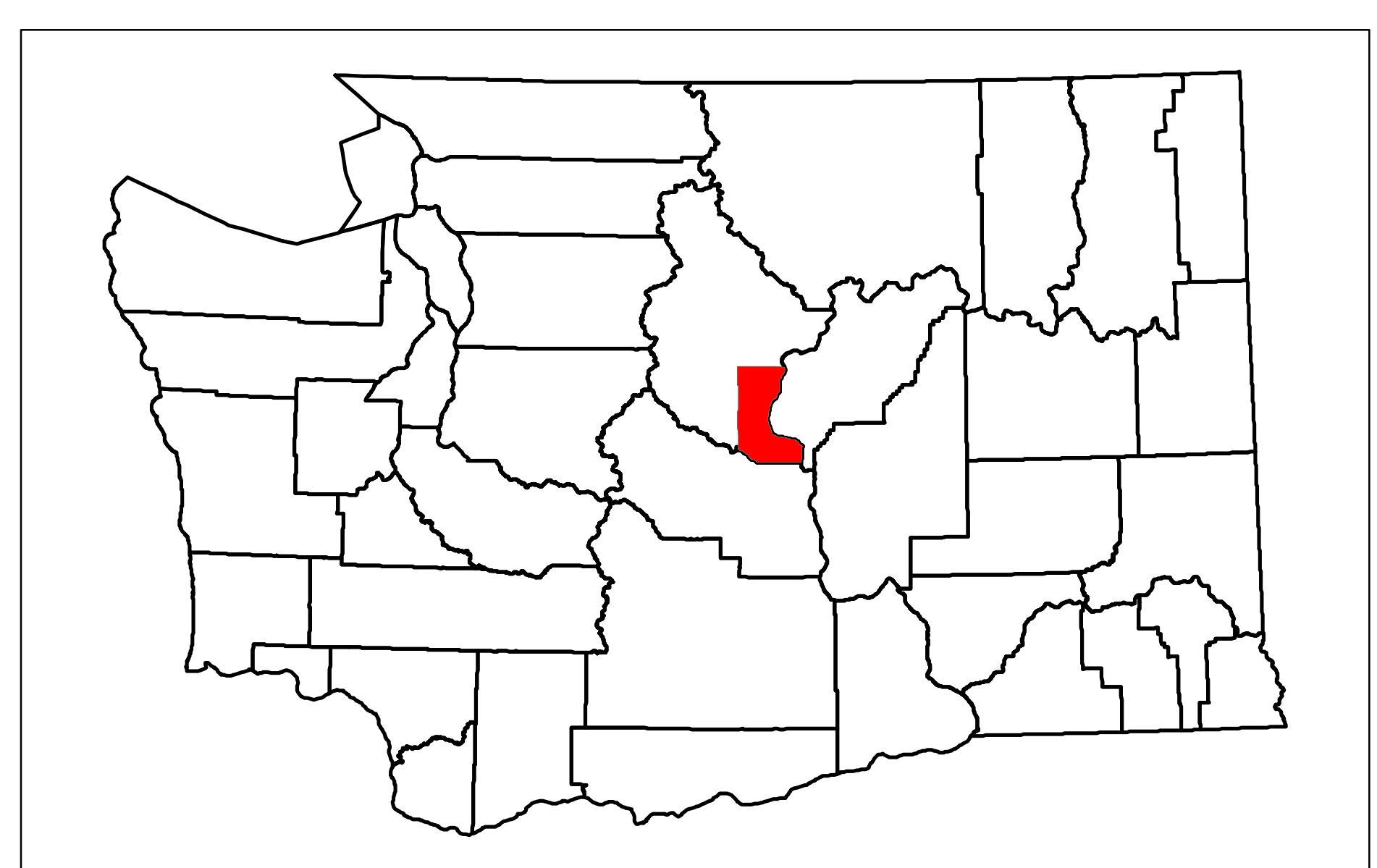
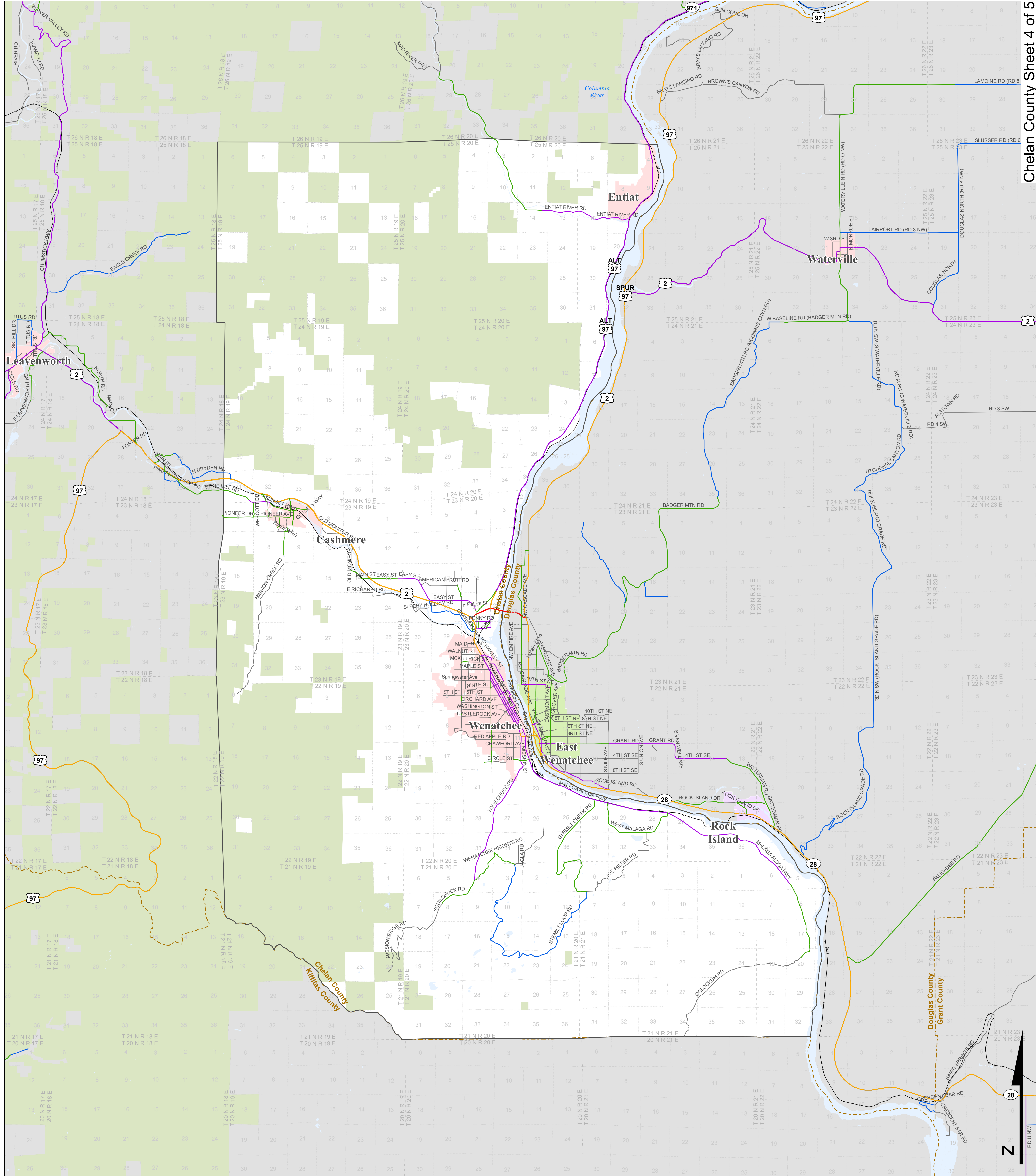
## Roadways 2015

WASHINGTON STATE DEPARTMENT OF TRANSPORTATION

TONNAGE CLASS  
T1 - T5  
ANNUAL TONS  
(in thousands)

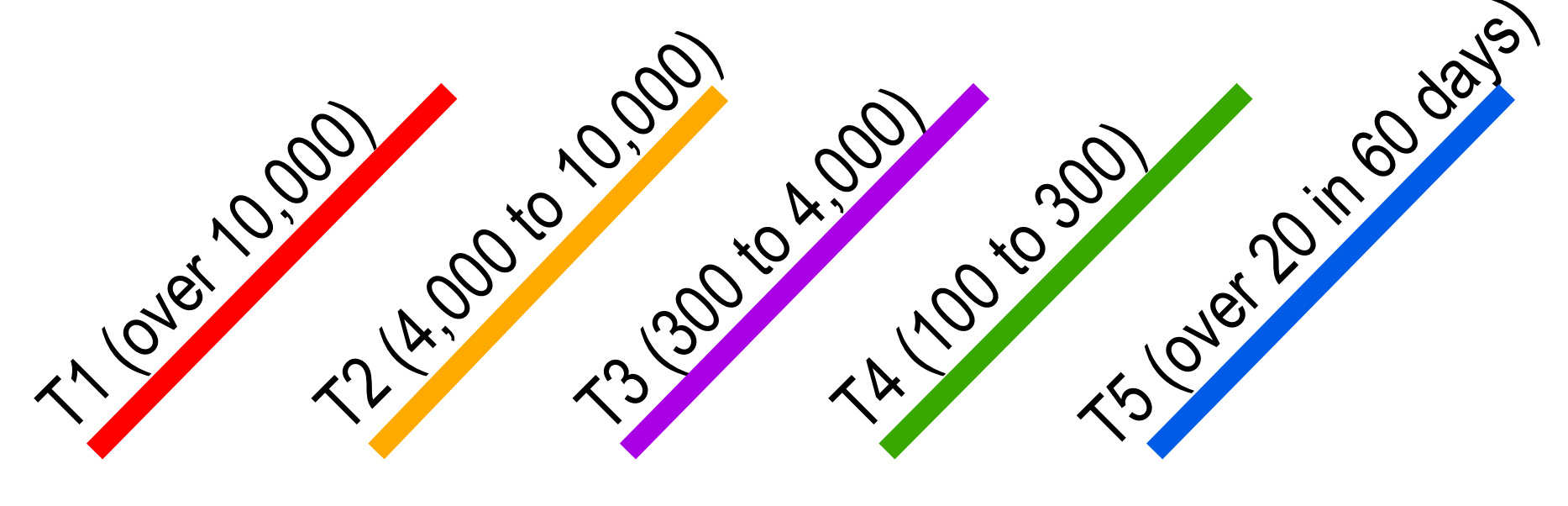






**Freight and Goods  
Transportation System**  
**Roadways 2015**  
WASHINGTON STATE DEPT OF  
TRANSPORTATION

**TONNAGE CLASS T1 - T5 / ANNUAL TONS (in thousands)**



Other  
Roadways  
Proposed  
Routes

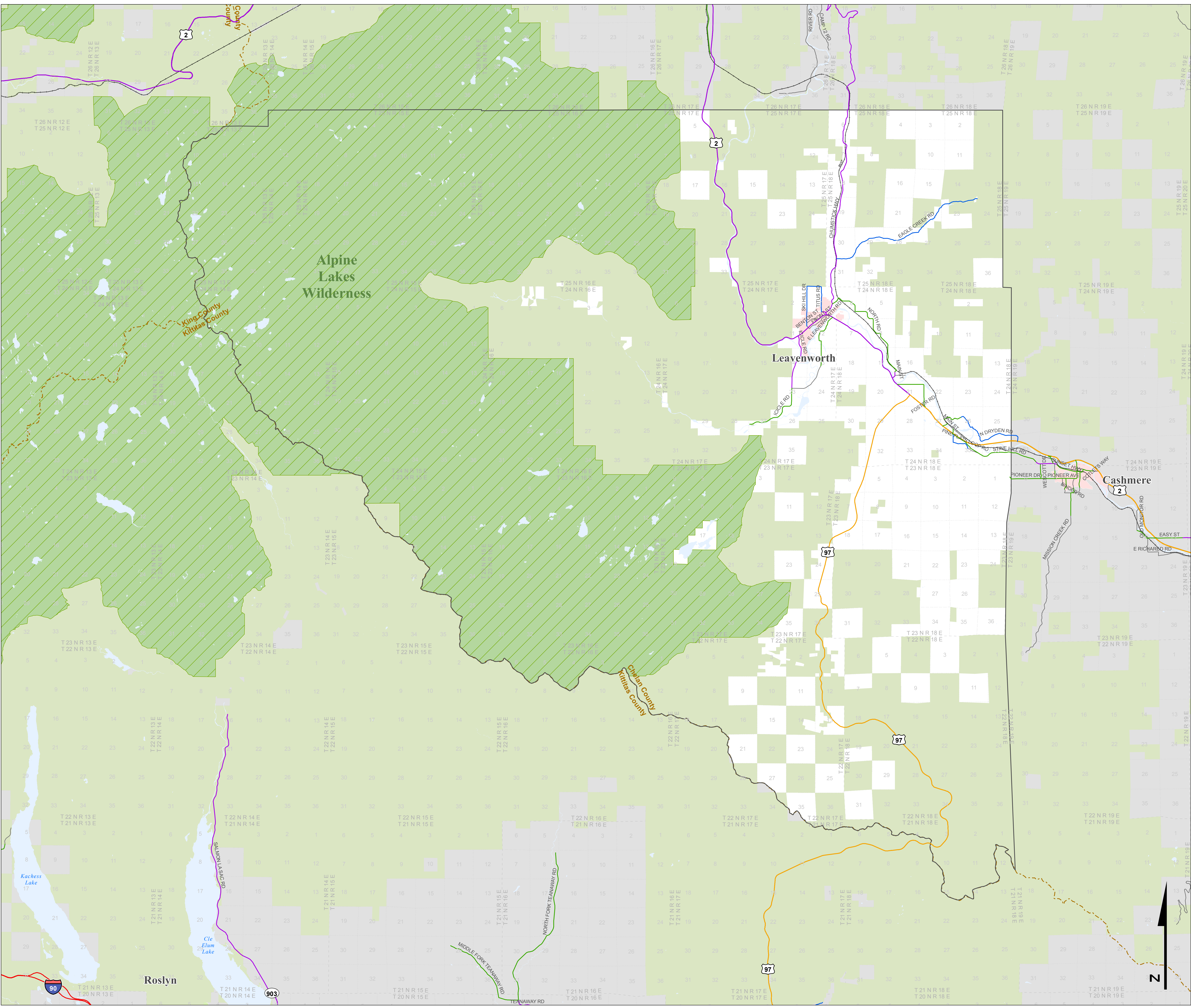
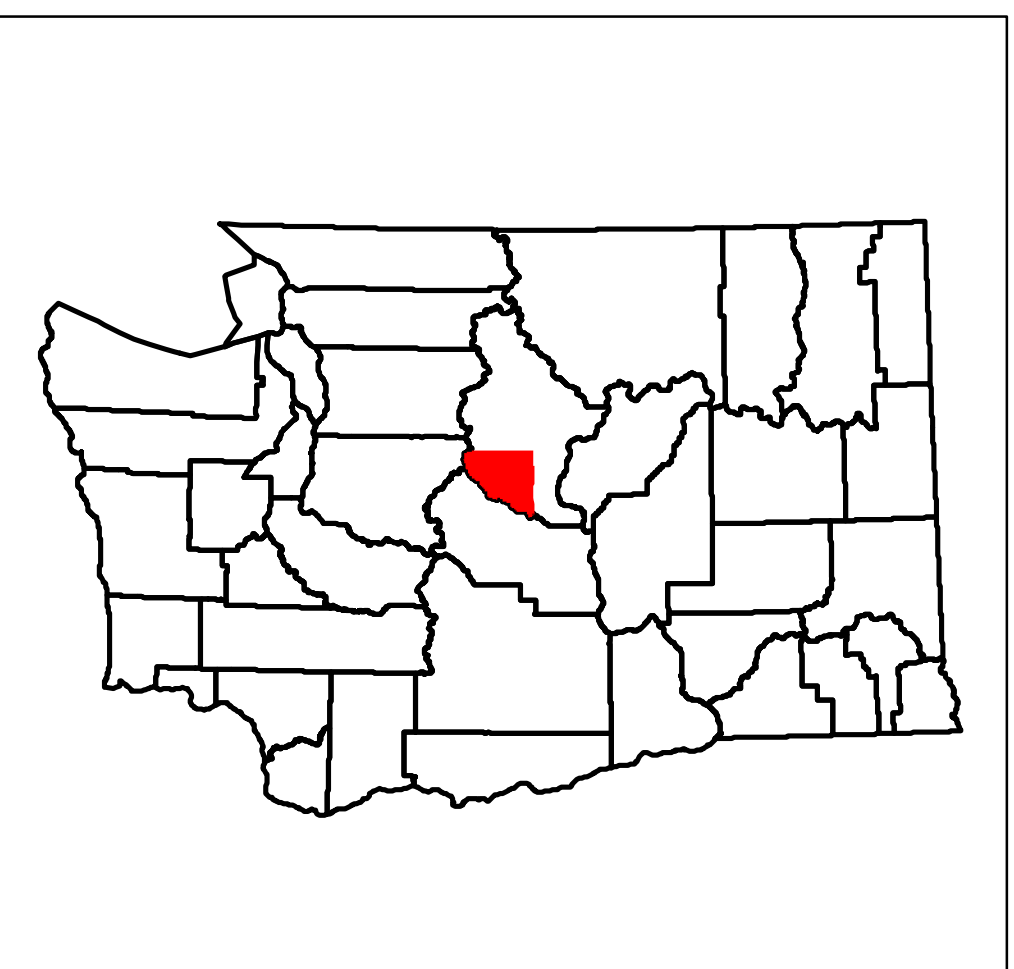
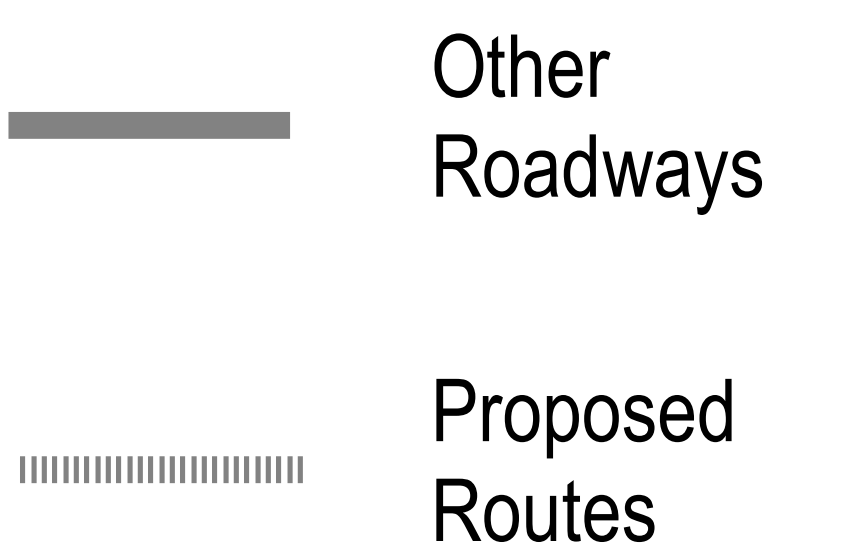
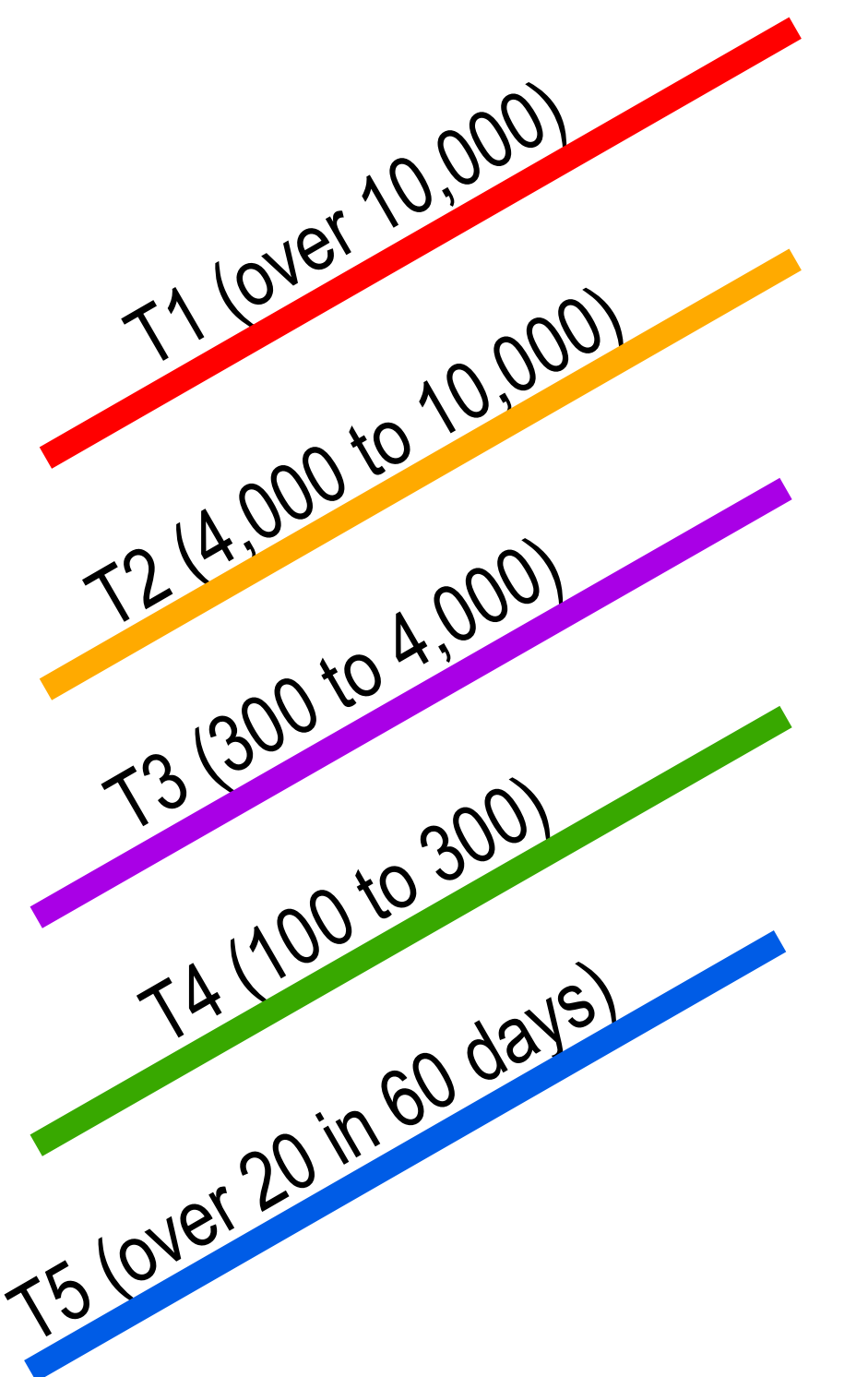


# Freight and Goods Transportation System

## Roadways 2015

WASHINGTON STATE DEPARTMENT OF TRANSPORTATION

TONNAGE CLASS  
T1 - T5  
ANNUAL TONS  
(in thousands)





#### **IV. APPENDIX D – PROJECT PRIORITIZATION CRITERIA**

The following figure shows the criteria used to prioritize Chelan County’s 20-year capital project list by vicinity

# Project Evaluation

Goal	Metric Description	Ranking
1. Maintain What We Have	Does the project include a maintenance, rehabilitation, or bridge replacement component?	4 = Bridge replacement/rehab 3 = Major reconstruction 2= Other maintenance 0= Not maintenance
2. Safety	Does the project address a location with a history of injury/fatality collisions or identified modal conflicts?	4= History of injury/fatal collisions or hot spot 2= Safety enhancement 0= Other
3. Ensure Financial Viability	Does the project leverage outside funding sources/have multiple funding partners?	4= Yes 0= No
4. Support Land Use	Does the project support future growth or improve auto LOS?	2= Project needed to maintain LOS standard 1= Projects that benefit auto circulation 0= Other
	Does the project provide needed connections to key land-uses: farm-to-market, recreation, employment, forestry, etc.	2= Connects two or more destinations 1= Connects to one destination 0= Connects to less than one destination
5. Environmental Stewardship	Does the project support fish passage and/or storm water drainage?	2= Supports fish passage or storm water drainage 0= Other
	Does the project support multimodal travel?	2= Transit/Bike/Ped 1= Indirectly Improves Transit/Bike/Ped 0= No
6. Be An Active Partner	Does the county partner with other agencies/entities?	4= County partners with two or more agencies/entities 2= County partners with one additional agency/entity 0= No

## **V. APPENDIX E – 20-YEAR PROJECT LIST (INCLUDES SCORING)**



