

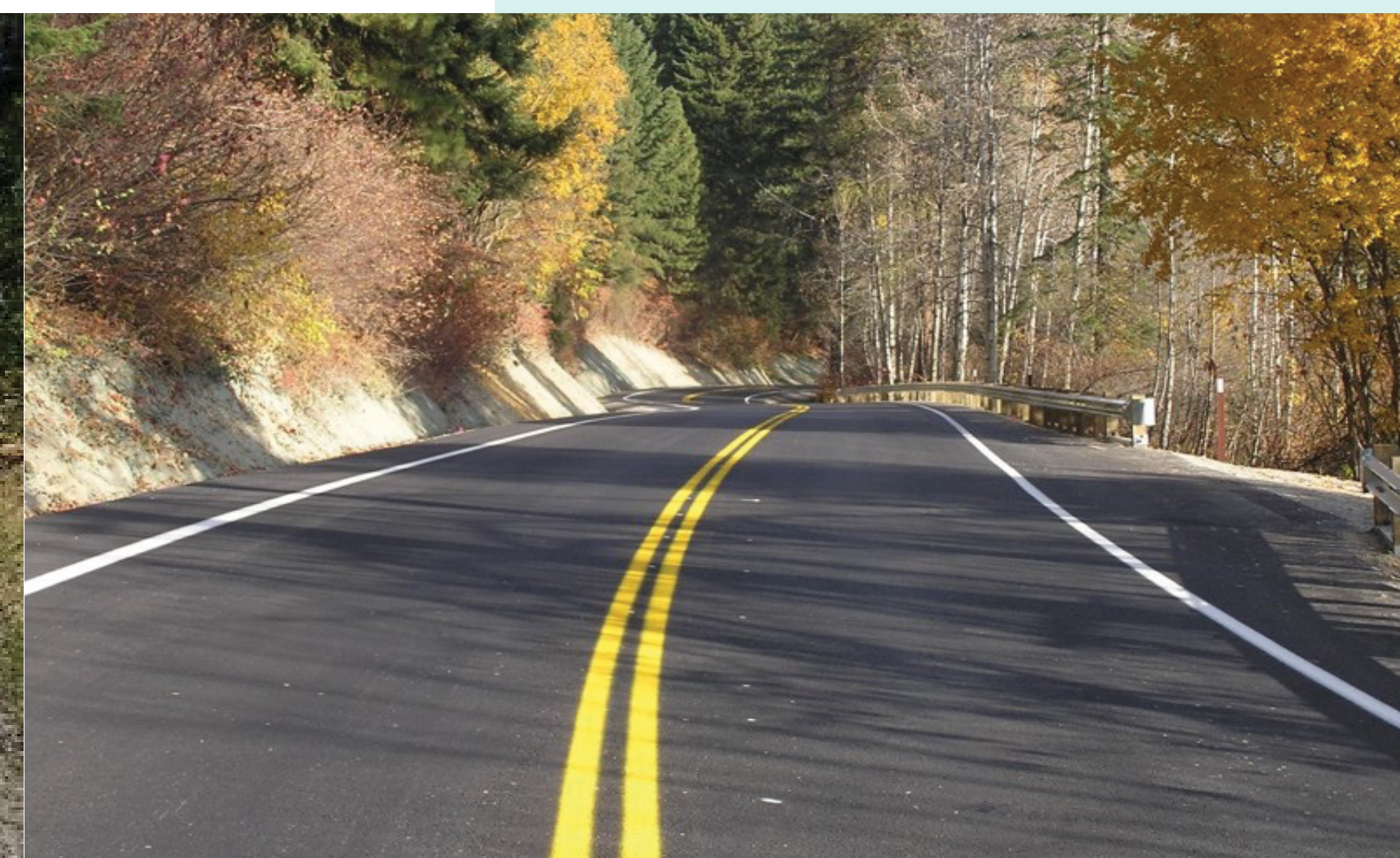
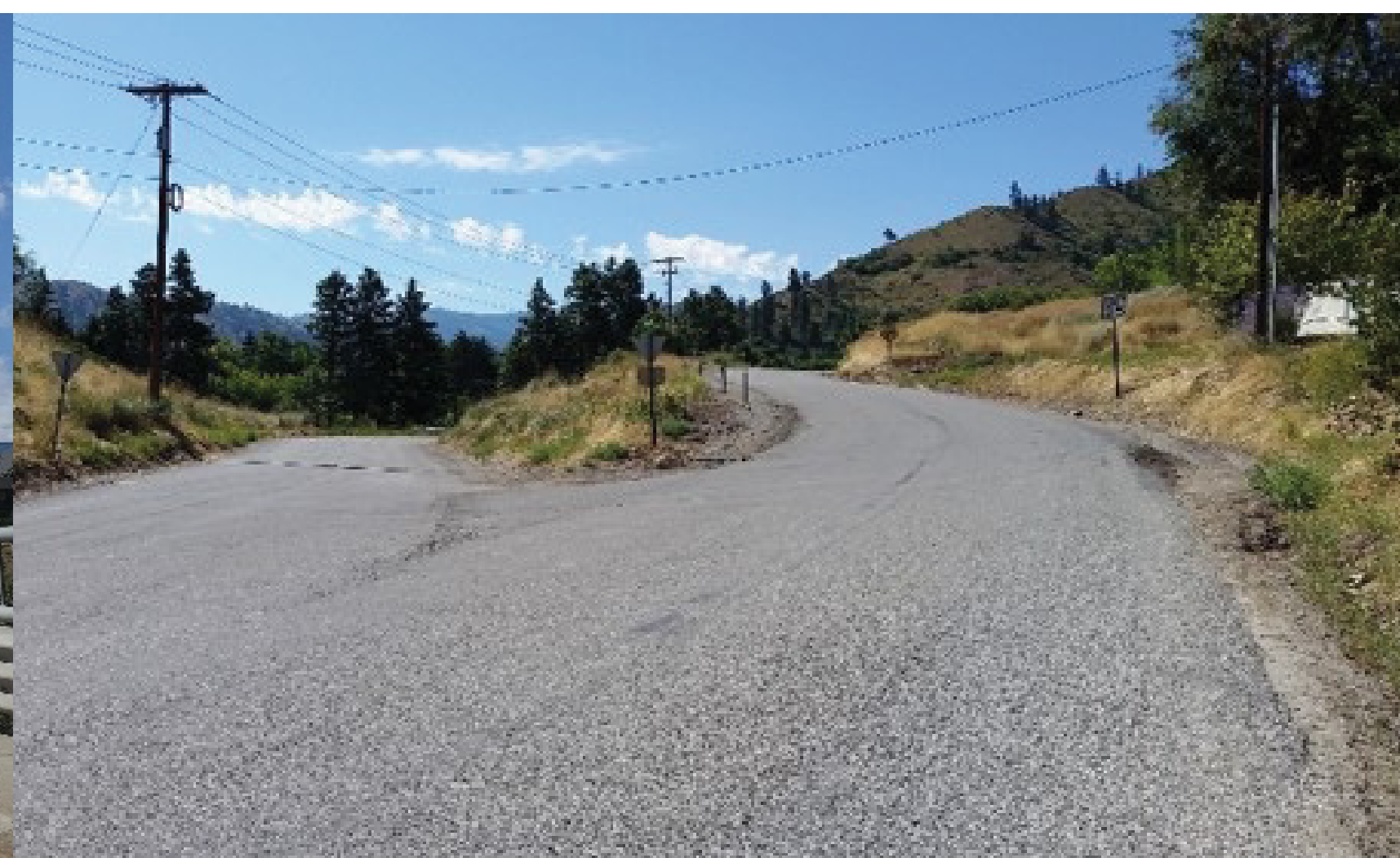
# What is a Transportation Element?



- Planning for how people move in and through Chelan County in the future.
- Considering all modes including pedestrians, bicyclists, transit users, motorists, freight, and more!

## GROWTH MANAGEMENT ACT REQUIREMENTS

- Align with land use
- Coordinate with other governmental entities
- Set goals and performance measures to track them
- Form a financially-constrained project list



## THE TRANSPORTATION PLAN PROCESS

### County Mobility Goals

- Identifies priority users on individual streets
- Based on existing travel patterns and input from County staff, stakeholders, and community members



### Evaluate Performance by Mode



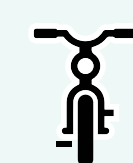
Auto



Transit



Pedestrian



Bicycle



Freight



### Plan Implementation Items

- 20 Year Project List
- 6 Year Capital Improvement Program
- Concurrency
- Funding Sources

# The following goals are proposed to help shape Chelan County's Transportation Future

## PROJECT GOALS

**Maintain what we have**



**Safety**



**Ensure financial viability**



**Be an active partner**



**Environmental stewardship**



**Supports land use**



# Ongoing Programmatic Expenditures

One of the goals of the Transportation Element is to make sure that we take care of what we already have, in addition to considering new projects.

## PROGRAMMATIC EXPENDITURES INCLUDE:

### **Pavement Preservation**

Includes traditional pavement overlays and pothole repair. This program also improves curb ramps and other street features.

### **Roadway Maintenance**

Routine and ongoing activities such as snow and ice control.

### **Administration & Operations**

Public works transportation administration and support; engineering and planning services that support transportation capital projects

### **Capital Outlay**

Buildings and maintenance facilities that support the transportation program



### **Future Needs Influenced By**

- Aging infrastructure and bridges.
- Safety needs such as removal of hazard trees, guard rail replacement/gaps, and improving slope stability.
- New and increased environmental and ADA standards.

# Transportation Issues & Opportunities

## WHAT WORKS WELL AND WHAT CAN BE IMPROVED IN CHELAN COUNTY?

	Going Well	Room For Improvement		Going Well	Room For Improvement
<b>Traffic Congestion</b>			<b>Roadway Maintenance</b> (Pavement Condition, Snow Removal)		
<b>Sidewalks, Trails, Bikeways</b>			<b>Convenient Connections</b> (I can easily get where I want to go using the mode of my choice)		
<b>Freight Movement</b>			<b>Bus Service</b>		
<b>Safety on Neighborhood Streets</b> (Speed of Traffic, Lighting)			<b>Other</b> (Write your priority here)		
<b>Safety on Arterial Streets</b> (Speed of Traffic, Crosswalks)					

# How Do We Pay for the Plan?



This Plan will guide how Chelan County invests through 2037 in maintaining and upgrading its roads, bridges and trails. To align the plan with available funds, the County will need to consider increasing revenues or decreasing overall expenses.

## Two Strategies to Fill Funding Gaps

### Increase Revenue

From existing funding sources or implementation of new funding or financial tools.

Or

### Decrease Expenses

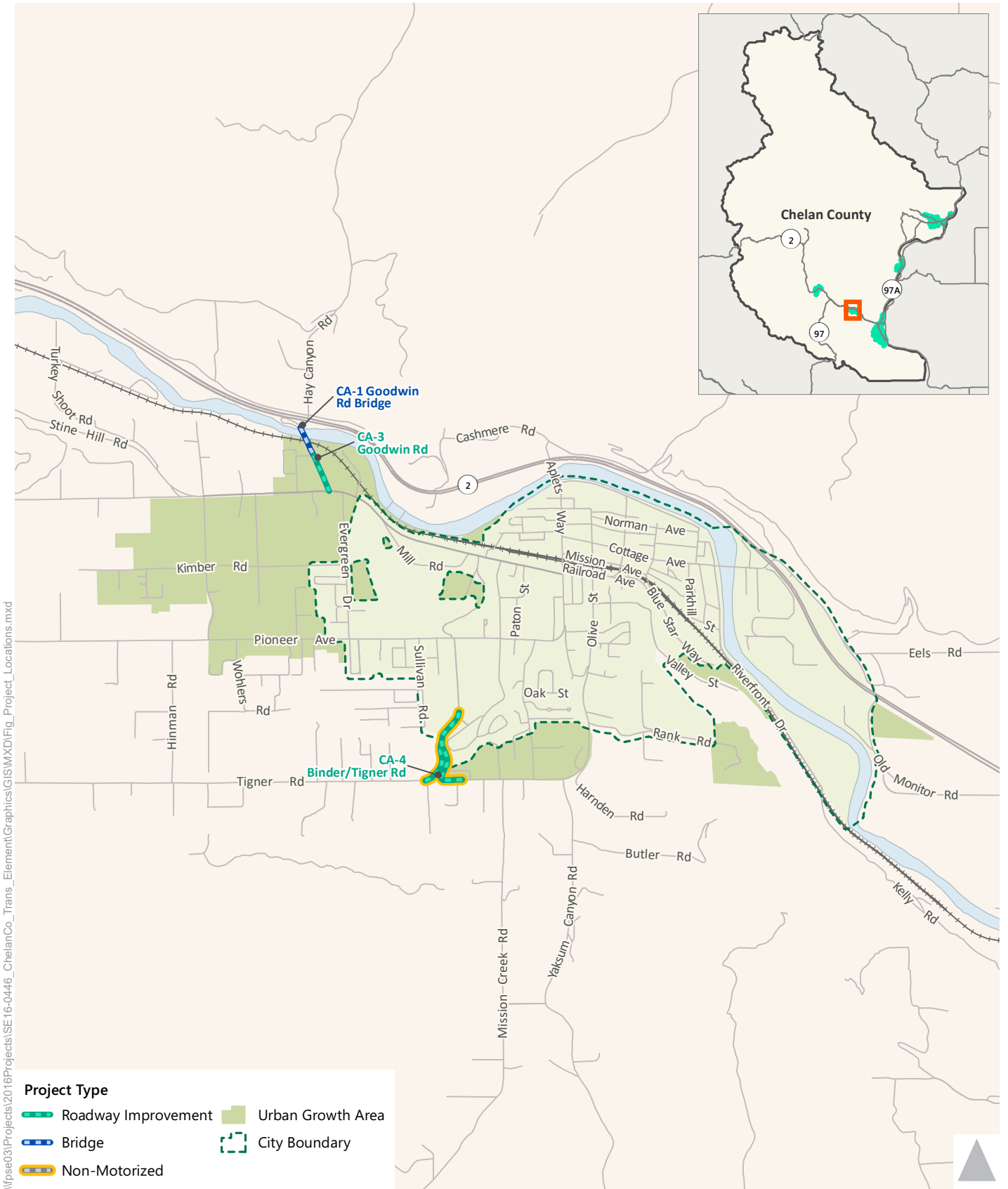
Reduce programmatic expenditures or further prioritize the capital project list.



## Potential New Revenue Sources

- Transportation Benefit District (vehicle license fee or sales tax)
- Local Option Fuel Tax
- Roadway Improvement Districts
- Drainage Districts
- Levy Lid Lift
- Transportation Impact Fees
- Financing Tools:
  - General Obligation bonds
  - Public-Private Financing

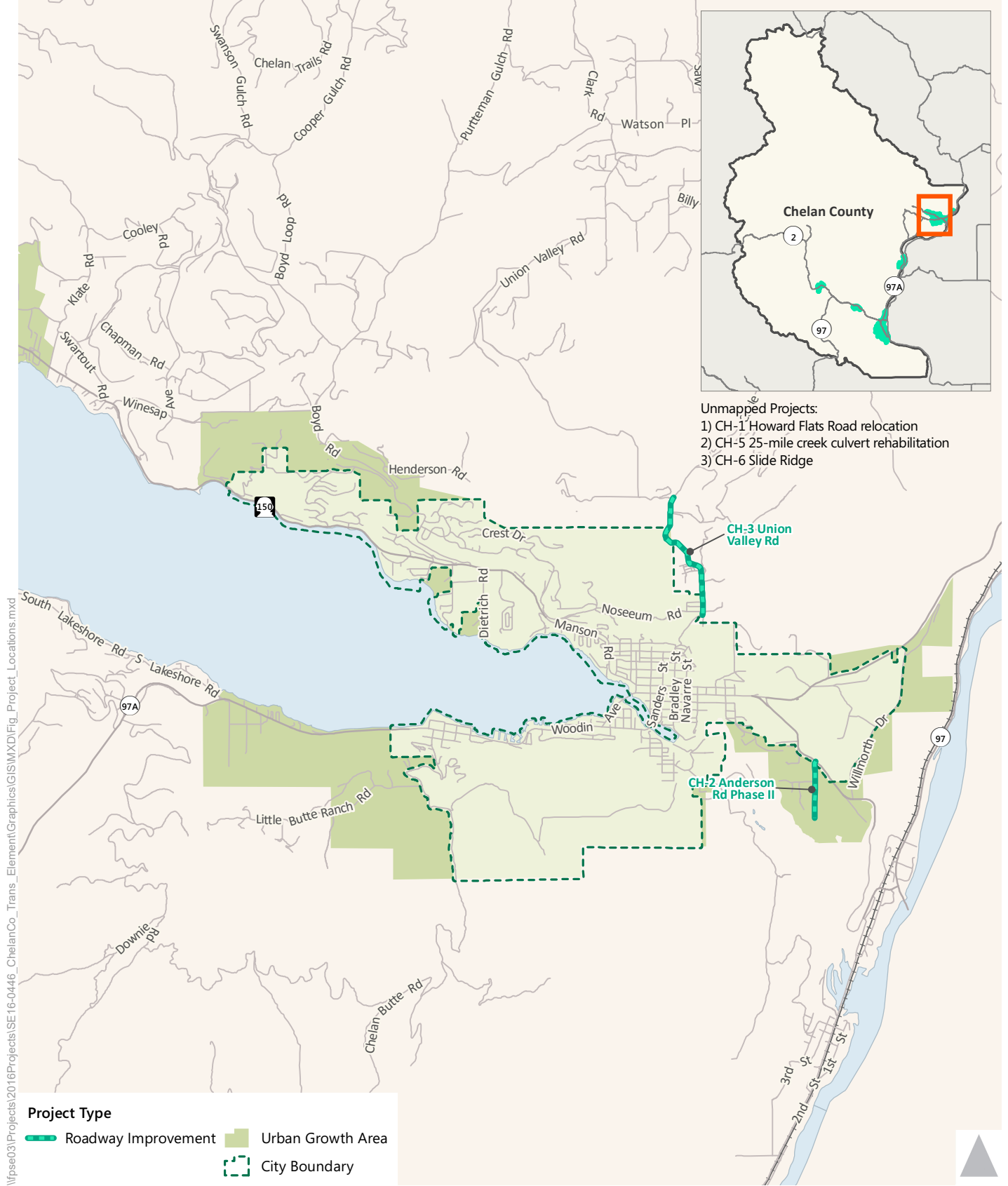




\\fpse03\Projects\2016\Projects\SE16-0446\_ChelanCo\_Trans\_Element\Graphics\GIS\MXD\Fig\_Project\_Locations.mxd

Figure 1  
Project Locations  
Cashmere and Monitor





\\pse03\Projects\2016\Projects\SE16-0446\_ChelanCo\_Trans\_Element\Graphics\GIS\MXD\Fig\_Project\_Locations.mxd



Figure 2  
Project Locations  
Chelan

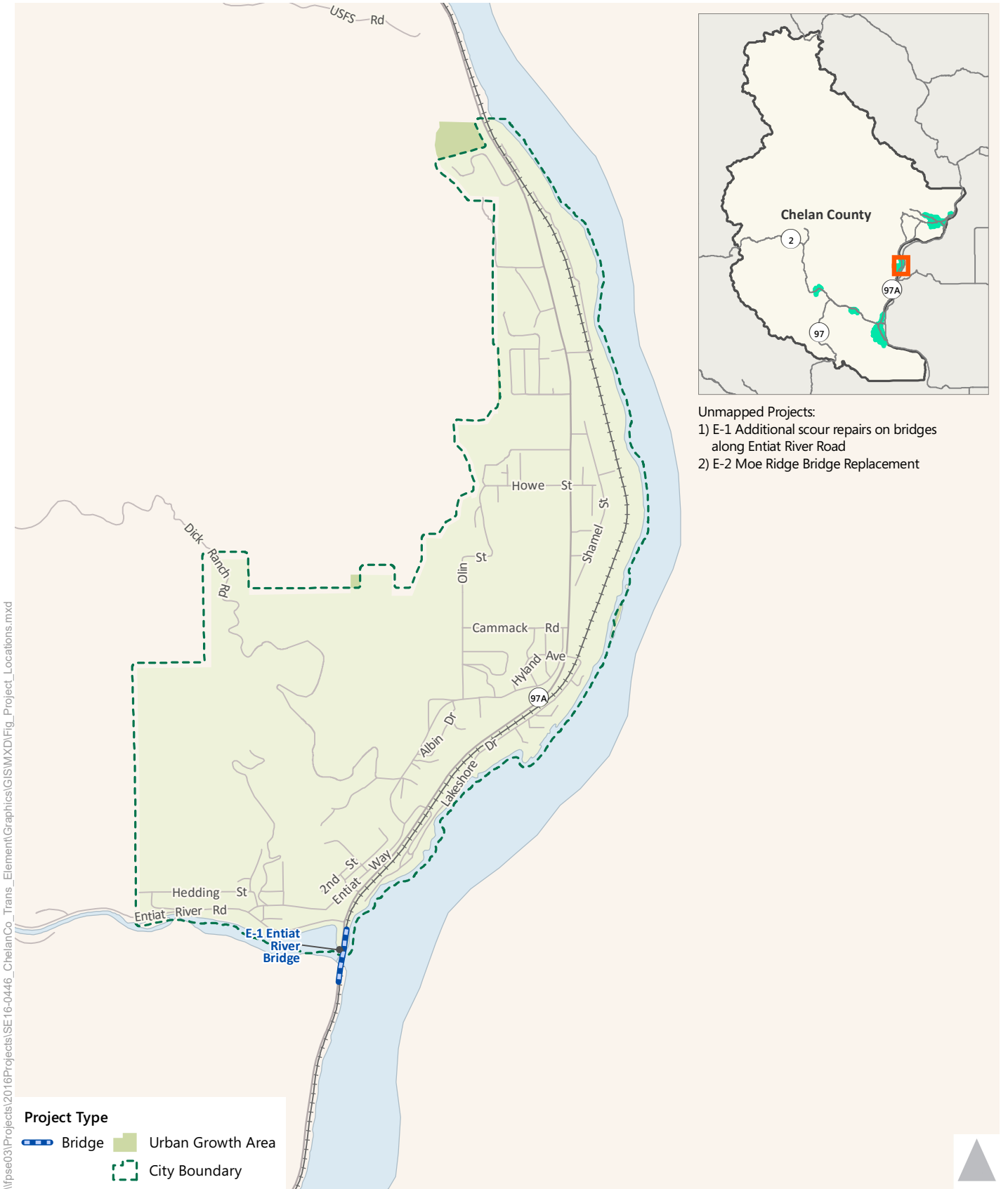
\\pse03\Projects\2016\Projects\SE16-0446\_ChelanCo\_Trans\_Element\Graphics\GIS\MXD\Fig\_Project\_Locations.mxd



Figure 3  
Project Locations  
Manson







\\pse03\Projects\2016\Projects\SE16-0446\_ChelanCo\_Trans\_Element\Graphics\GIS\MXD\Fig\_Project\_Locations.mxd



Figure 4  
Project Locations  
Entiat

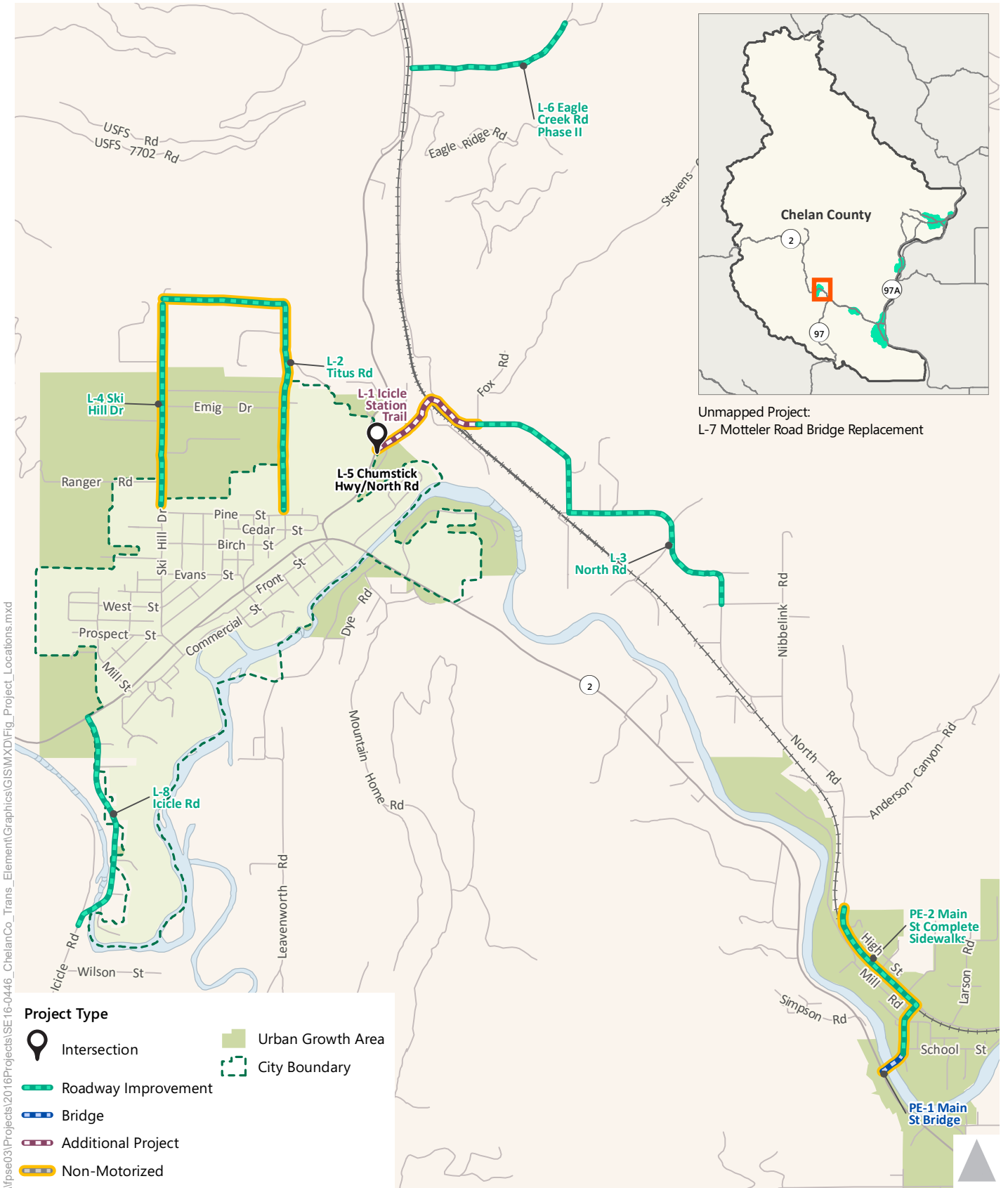


Figure 5  
Project Locations  
Leavenworth and Peshastin



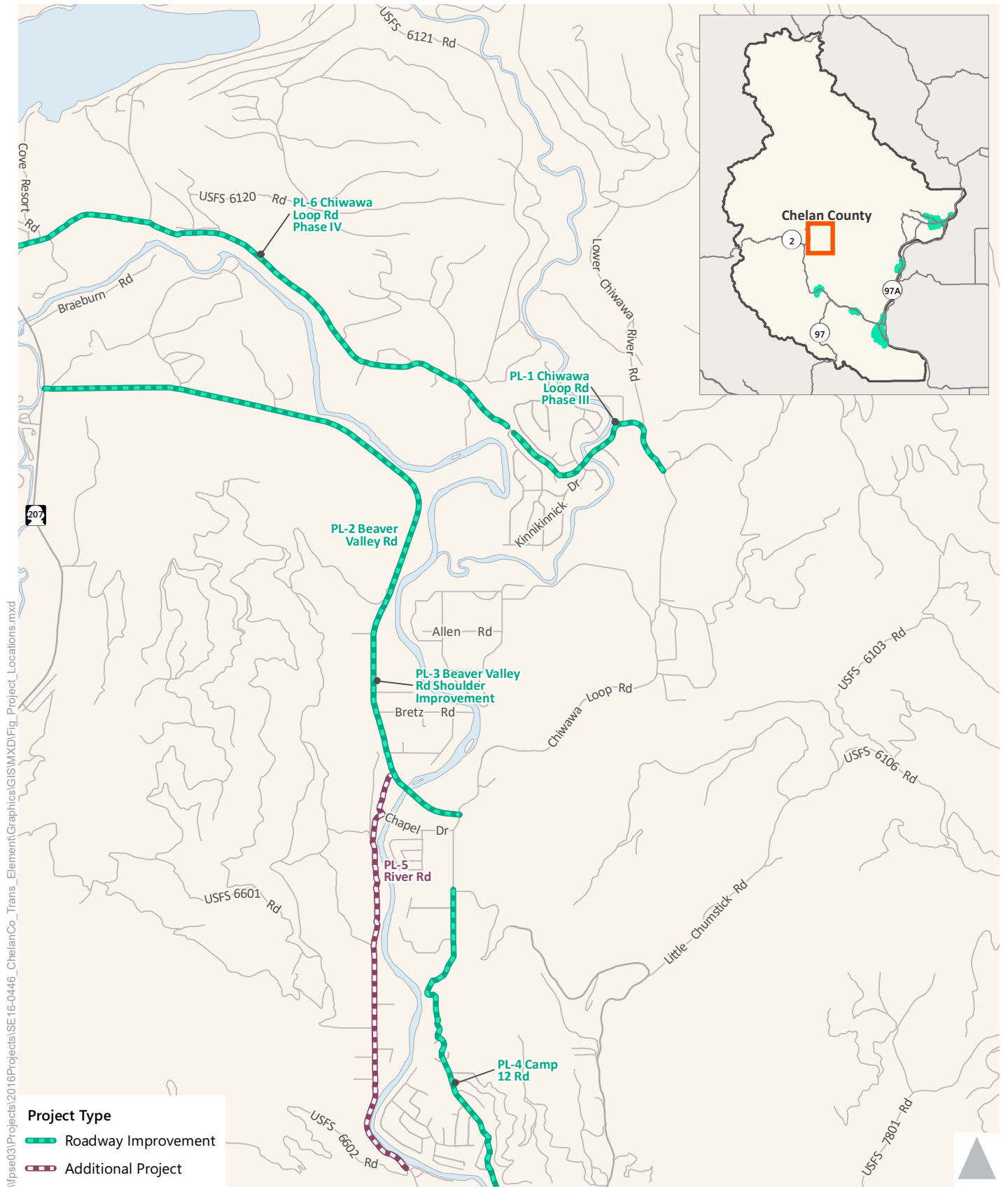


Figure 6  
Project Locations  
Plain



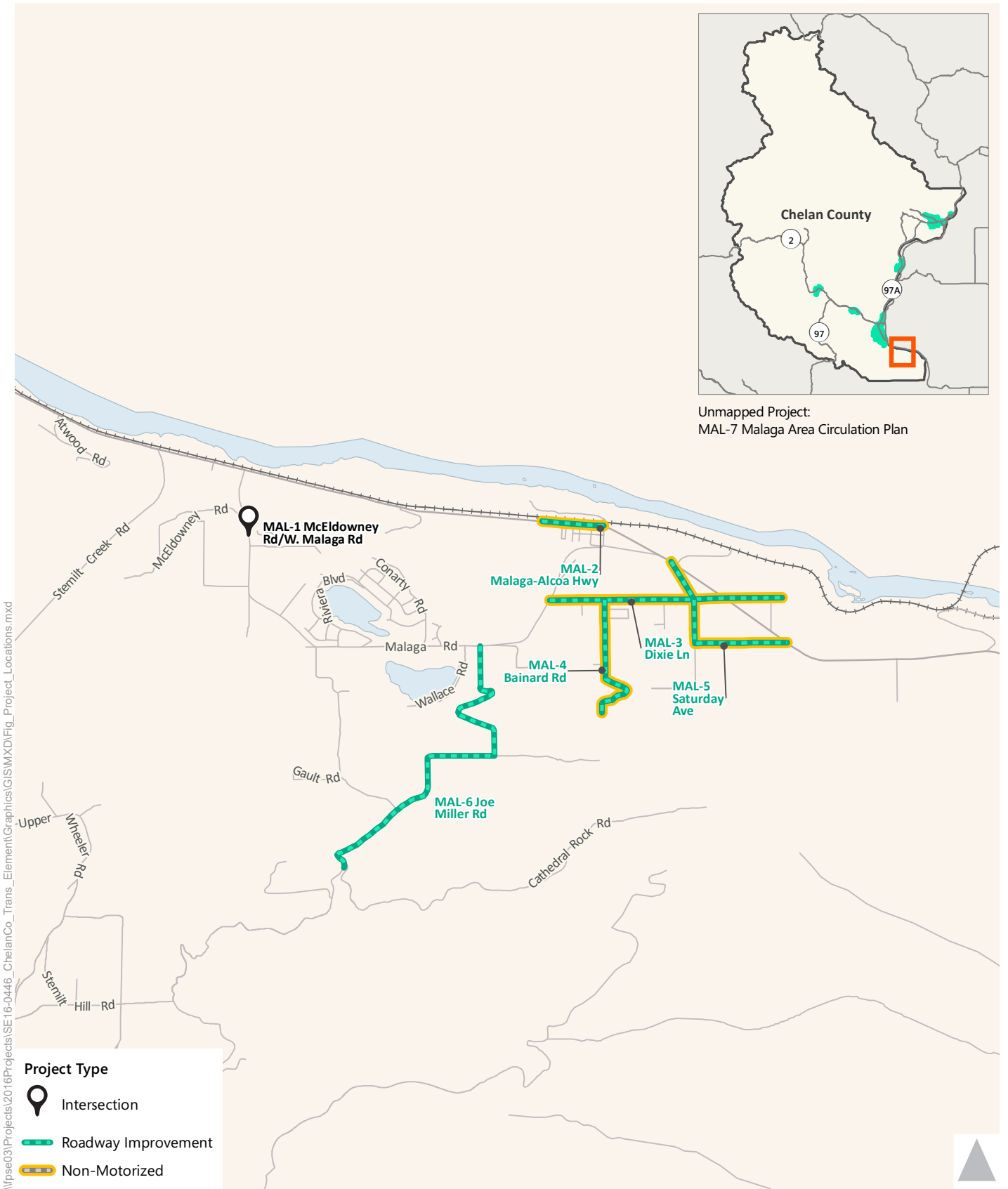
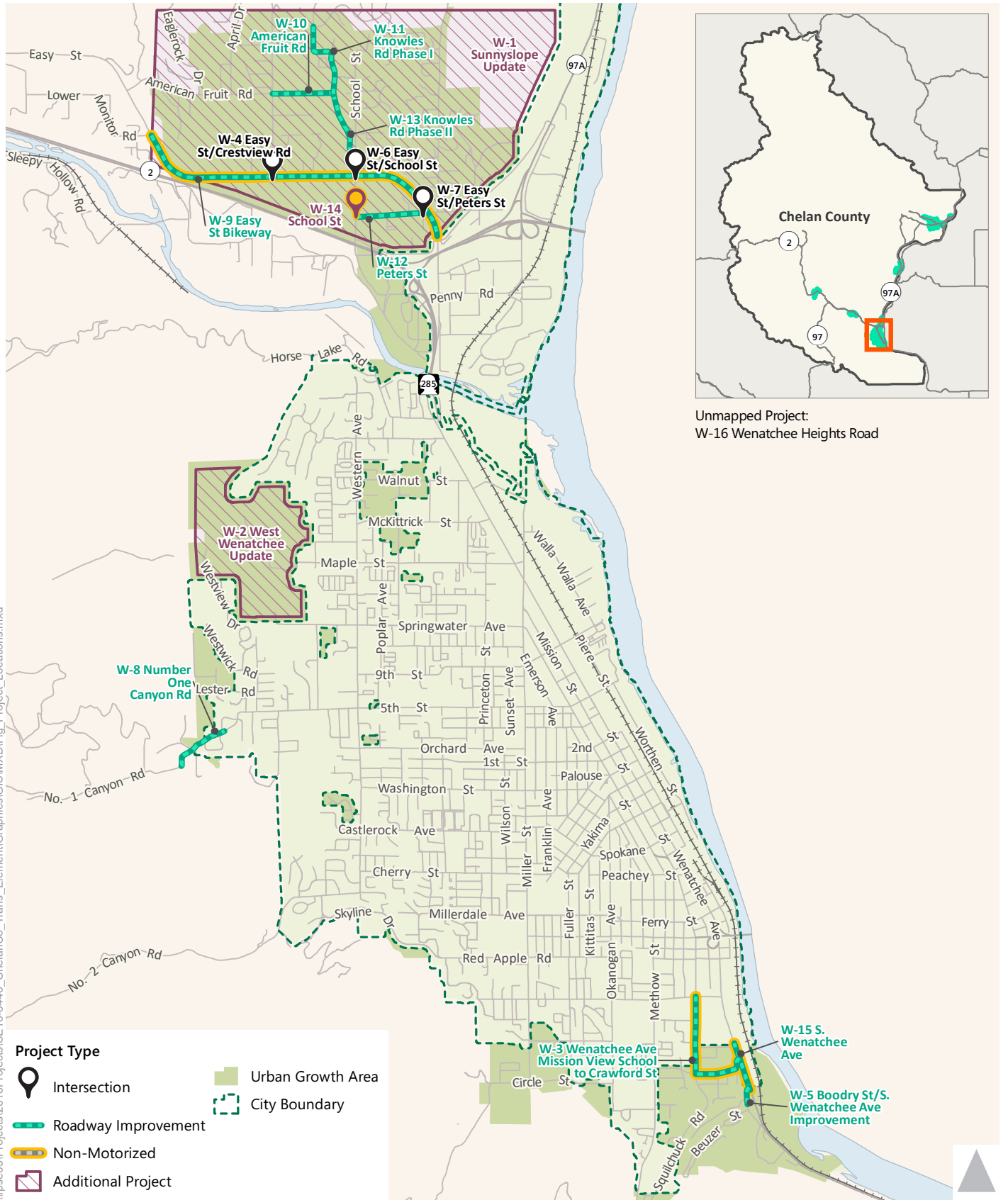


Figure 7  
Project Locations  
Malaga





\\pse03\Projects\2016\Projects\SE16-0446\_ChelanCo\_Trans\_Element\Graphics\GIS\MXD\Fig\_Project\_Locations.mxd



Figure 8  
Project Locations  
Wenatchee