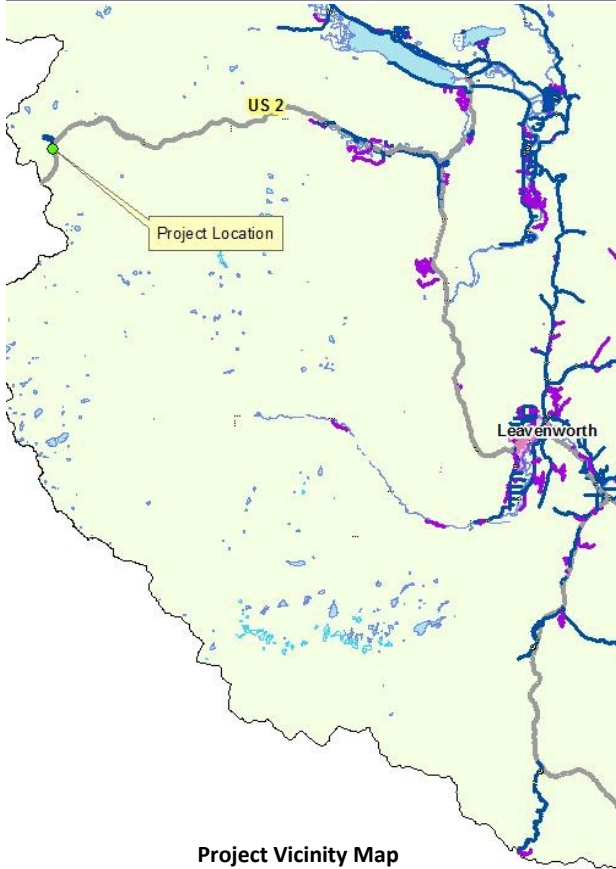




CRP 715: Yodelin Creek Culvert Replacement Project

Stevens Road off US 2 (at milepost 0.04)

Last Updated: Nov. 15, 2016



Project Vicinity Map

Project Number: County Road Project 715

Project Length: MP 0.02 to MP 0.06

Basis for Project: Culvert crossing replaced with bridge

Construction: Summer 2018

Project Description: The project will replace the existing multi-culverts crossing at Stevens Road (38630), located off US 2 near the summit, with a single-span bridge. The crossing was damaged during a November 2015 flood event and temporary repairs were made. The project will replace two existing 36-inch diameter culverts with a single-span bridge over Stevens Creek. The channel will require minor modifications to profile grade to be compliant with WAC fish passage requirements and may require a minor channel alignment change to accommodate a bridge.

Status: HW Lochner Inc. was hired in November 2016 to complete the design.

Traffic Impacts: During construction the road may at times be closed to through traffic.

Funding Sources:

| | |
|------------------|------------------|
| County Road Fund | \$113,750 |
| State Funds | \$113,750 |
| FEMA Funds | \$682,500 |
| TOTAL: | \$910,000 |



(Right) Temporary repairs to crossing included the installation of two culverts and road repairs.

(Above) Washout of culverts from 2015 flood event.



(Left) Culverts destroyed by debris flow from flood event.

