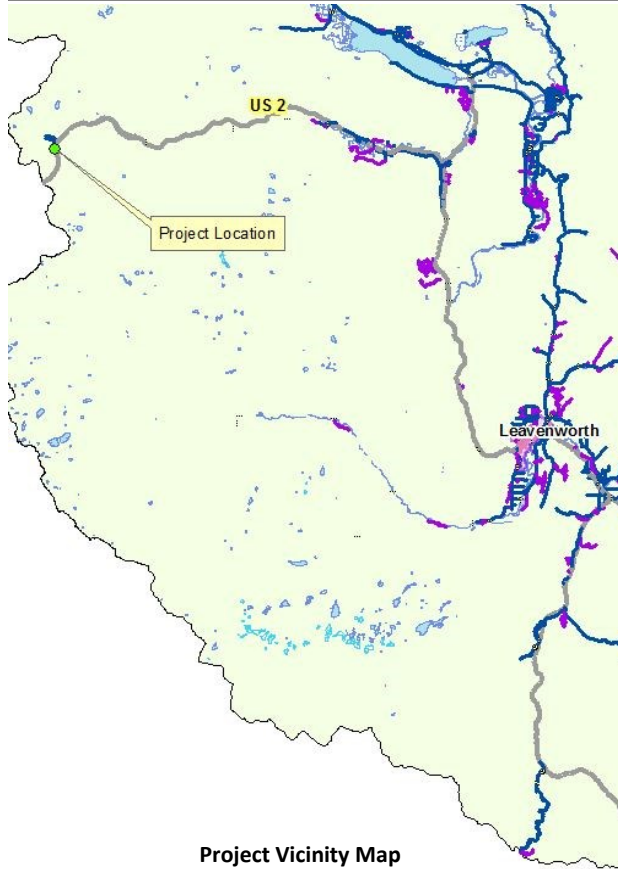




CRP 715: Yodelin Creek Culvert Replacement Project

Stevens Road off US 2 (at milepost 0.04)

Last Updated: Dec. 11, 2018



Project Vicinity Map

Project Number: County Road Project 715

Project Length: MP 0.02 to MP 0.06

Basis for Project: Culvert crossing replaced with bridge Construction: Summer 2019

Project Description: The project will replace the existing multi-culverts crossing at Stevens Road (38630), located off US 2 near the summit, with a single-span bridge. The crossing was damaged during a November 2015 flood event and temporary repairs were made. The project will replace two existing 36-inch diameter culverts with a single-span bridge over Stevens Creek. The channel will require minor modifications to profile grade to be compliant with WAC fish passage requirements and may require a minor channel alignment change to accommodate a bridge. Road is temporarily open with one lane only.

Status: Design is 90% complete. The project is out for bids. Bids will be opened at 9:30 a.m. on Jan. 22 at the Board of County Commissioners meeting.

Traffic Impacts: During construction the road will at times be closed to through traffic. A detour will be put into place during those times. Construction will take about 40 working days.

Funding Sources:

County Road Fund	\$113,750
State Funds	\$113,750
FEMA Funds	\$682,500
TOTAL:	\$910,000



(Right) Temporary repairs to crossing included the installation of two culverts and road repairs.

(Above) Washout of culverts from 2015 flood event.



(Left) Culverts destroyed by debris flow from flood event.

