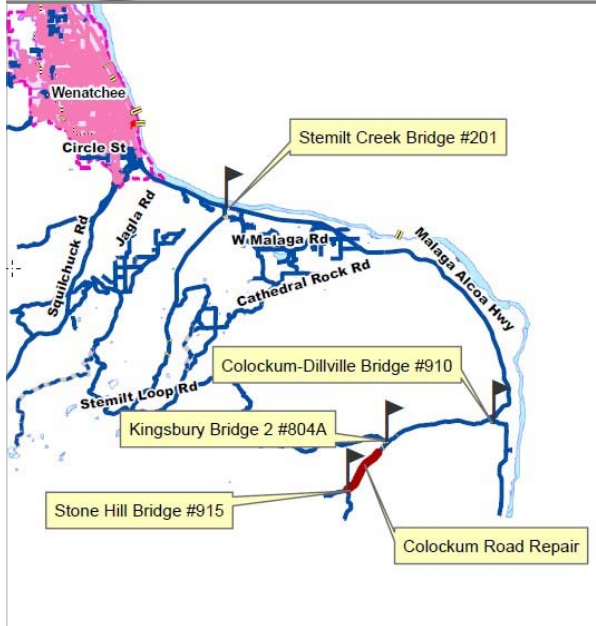




CRP 677: Colockum Bridges Scour Program

Kingsbury Bridge #804A, Colockum-Dillville Rd Bridge #910, Stone Hill Bridge #915

Last Updated: April 25, 2016



Project Vicinity Map

Project Number: County Road Project 677

Project Length: Varies

Basis for Project: Bridge Scour Repairs

Construction: Completed April 2016

Project Description: Project will was designed to mitigate scour by constructing deeper foundations on the Colockum-Dillville Bridge #910, the Kingsbury Bridge #804A, and the Stone Hill Bridge #915 within the Colockum Creek watershed. All bridges are vital links that serve residential, recreational, tourist, agricultural, and livestock traffic. The Colockum-Dillville Bridge, the Kingsbury Bridge, and the Stone Hill Bridge were all bridges within the Colockum watershed that were impacted by the May 2011 and August 2013 floods and have been temporarily stabilized through the placement of riprap.

Status: Project was completed April 2016.

Traffic Impacts: None

Funding Sources:

Federal Highway Bridge Program \$1,518,000

TOTAL: \$1,518,000



(Left) Failing Gabion on Stone Hill Bridge #915



(Left) Colockum-Dillville Road Bridge #910 Elevation



(Left) Failing Abutment on Kingsbury Bridge #804A



(Left) Kingsbury Bridge #804A Deck