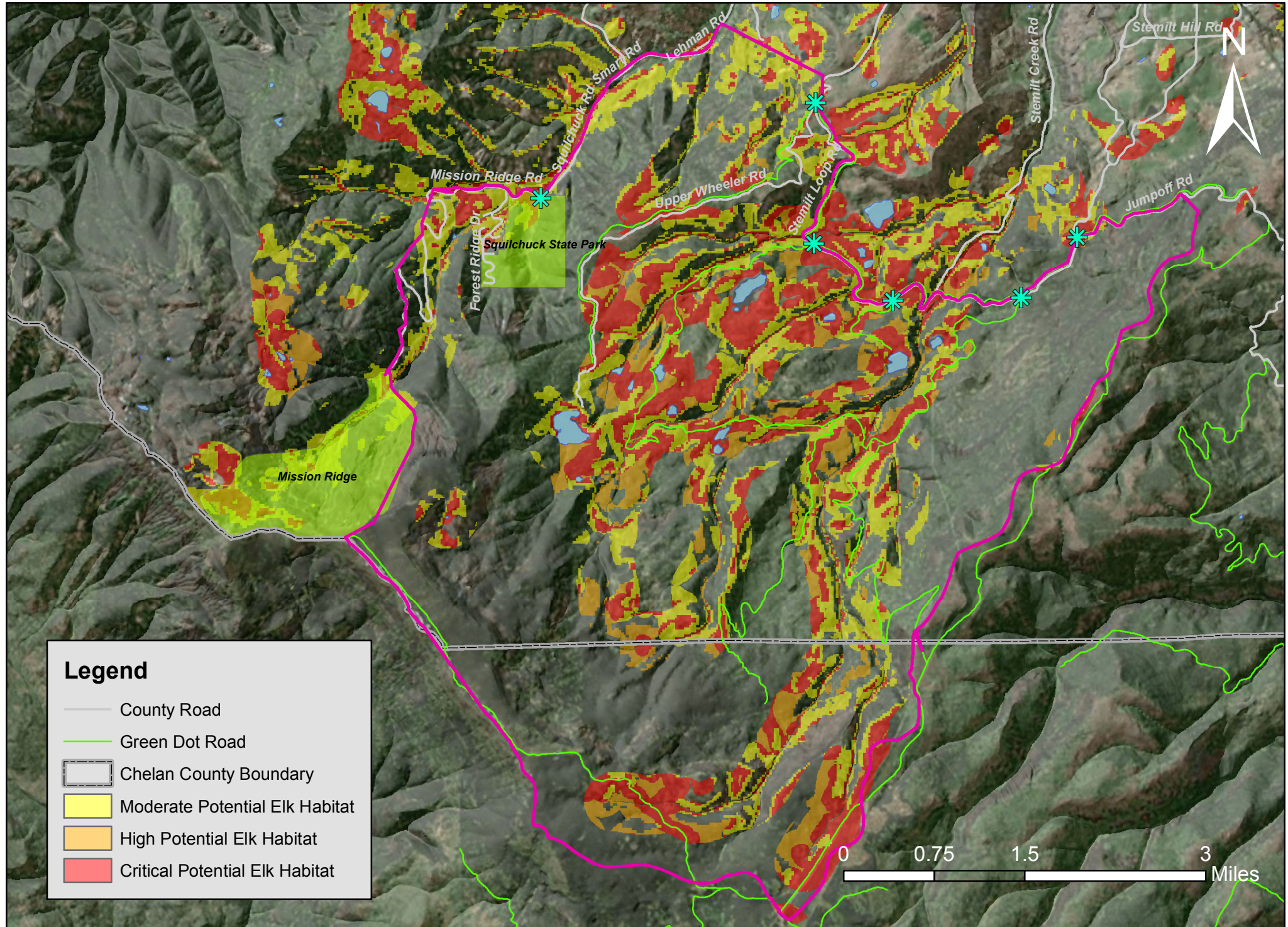


Stemilt-Suilchuck Recreation Planning Area Elk Habitat Potential



The planning area is defined by the Stemilt Watershed to the south and east, the Mission Ridge Ski Area boundary and Squilchuck Road to the west, and Stemilt Loop Road to the north. Data sources: Stemilt Vision Document 2008, Chelan County GIS. Erin McKay 2016.