



Tribal Fisheries Preservation and Enhancement Project

More information available at: <http://www.co.chelan.wa.us/natural-resources/>

PROJECT DESCRIPTION

The Yakama Nation and the Confederated Tribes of the Colville Reservation exercise federally protected fishing rights on Icicle Creek. From early May through mid-July of each year, the Yakama and Colville fish near the Leavenworth National Fish Hatchery at several locations, including the plunge pool at the base of the spillway to the hatchery channel. One of the IWG guiding principles is to protect Tribal treaty and federally protected harvest rights. The purpose of this project is to ensure that other projects do not have negative effects on the Tribal fisheries.

To accomplish this, the IWG will develop an adaptive plan that includes an assessment on flow and channel morphology at current fishing locations. This plan will develop alternative for attraction and retention of fish in Tribal fishing areas during the harvest periods that is coordinated with changing operations at Leavenworth National Fish Hatchery and increased flow. Additionally, the plan will include fishery effectiveness monitoring as a key component of the project.

Access and amenity improvements are also included in this project.

The estimated cost for this project is \$500,000.

PROJECT BENEFITS

- Maintains or improves the Tribal Fishery on Icicle Creek

GUIDING PRINCIPLES

- Protects Tribal Treaty and federally protected harvest rights at all times.

POTENTIAL ISSUES/DATA GAPS

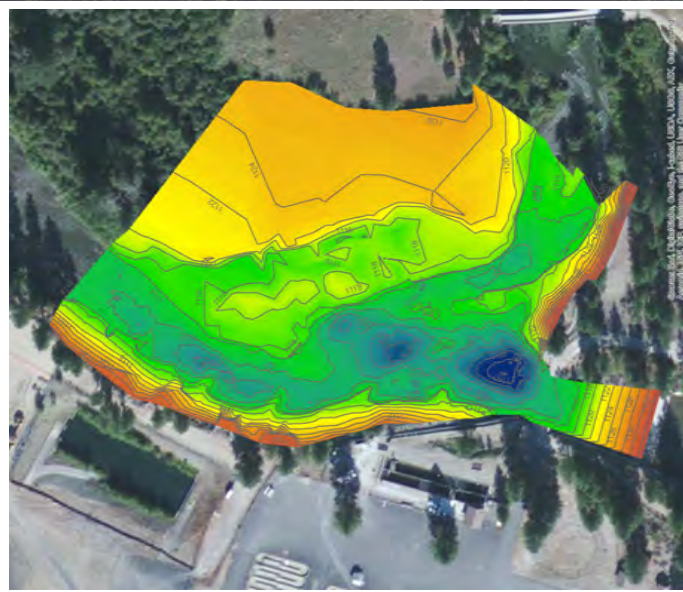
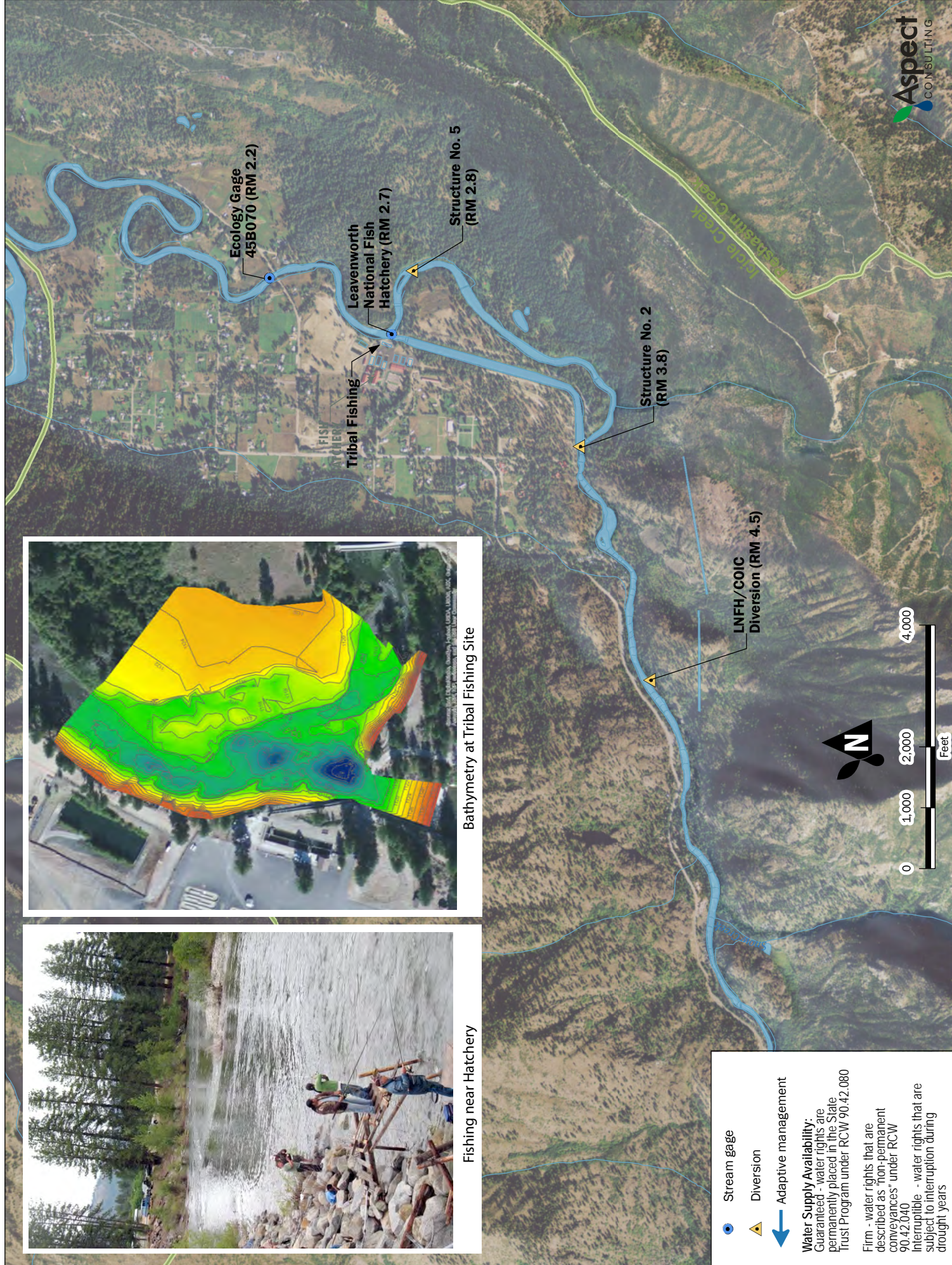
- Assess flow and channel morphology at current fishing locations
- Determine alternatives for attraction and retention

TIMELINE TO IMPLEMENT

2015	Tribal Impacts Appraisal Study
2016-2017	Environmental Review and Fishery Effectiveness Monitoring
2018	Fishery Effectiveness Monitoring and Design and Implementation of Adaptive Management Plan

EXISTING AND ONGOING STUDIES

- General Condition Hydrographic Survey at LNFH, 2015, Gravity Consulting LLC
- LNFH Tribal Fishery Analysis, 2015 (draft), Anchor QEA



Bathymetry at Tribal Fishing Site



Fishing near Hatchery