



Instream Flow Rule Amendment

More information available at: <http://www.co.chelan.wa.us/natural-resources/>

PROJECT DESCRIPTION

The Wenatchee Watershed Plan, which was collaboratively prepared with input from stakeholders throughout the watershed, included the development of an updated instream flow rule for the Wenatchee Basin.

Within the Wenatchee Instream Flow Rule, WAC 173-545, a reservation of water was established for future domestic use in the Icicle Creek Subbasin. Currently, the reserve is set at 0.1 cfs, but to supply projected demand this reserve needs to be increased. The Wenatchee Instream Flow Rule provides for a reserve increase of up to 0.5 cfs in the Icicle Creek subbasin so long as it is within the limitation of the 4.0 cfs reserve for the Wenatchee Basin. To increase the Icicle Creek Subbasin reserve, instream flow and habitat improvement projects must be implemented in Icicle Creek.

This project is being coordinated with instream flow and habitat projects, and seeks to amend the reserve to meet demand projected through 2050. To increase the reserve a formal rule amendment must occur.

PROJECT BENEFITS

- Make water available to meet demand projections through 2050

GUIDING PRINCIPLES

- Improves Domestic Supply

POTENTIAL ISSUES/DATA GAPS

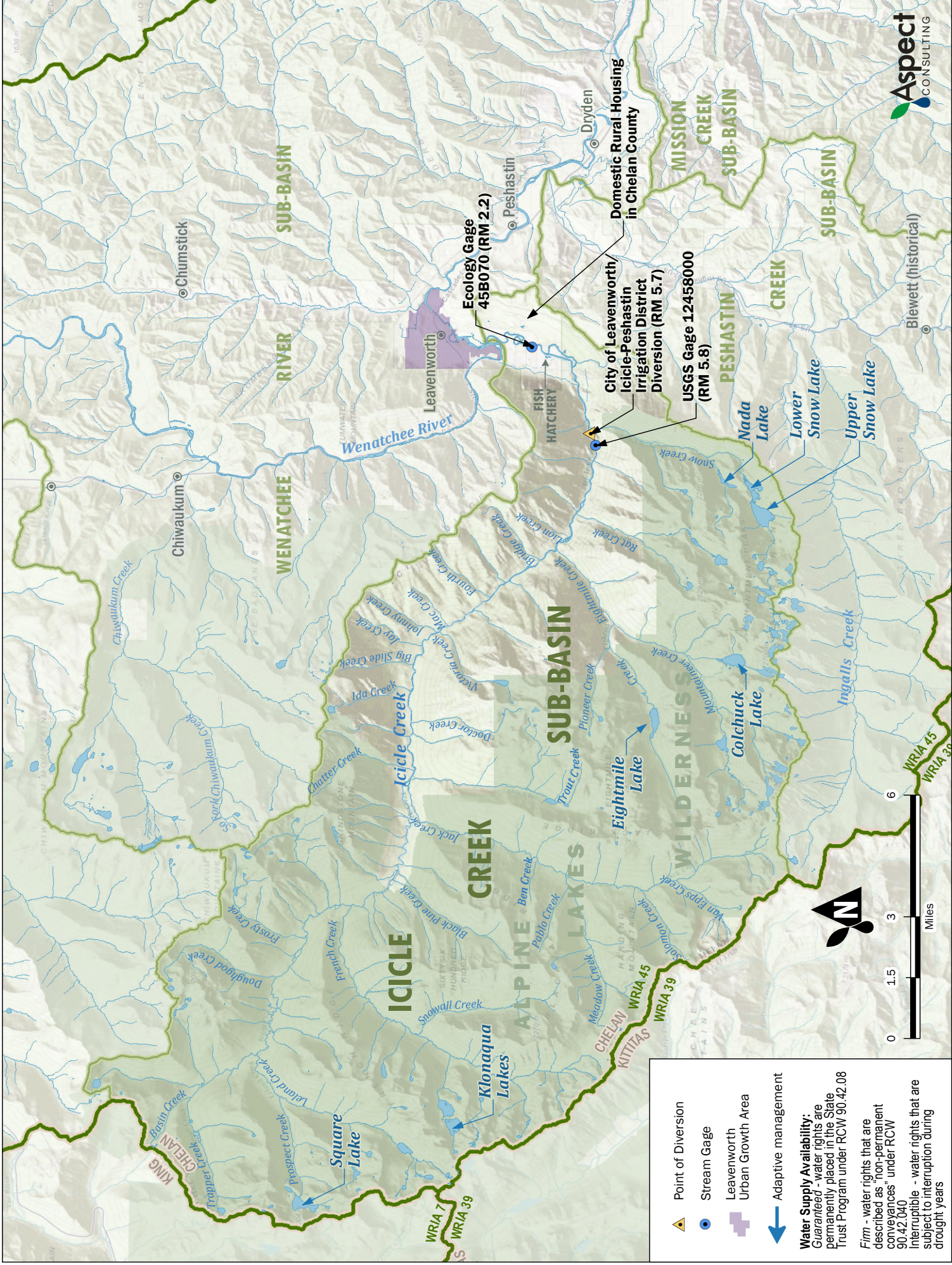
- Ecology workload limitation for Rule making

TIMELINE TO IMPLEMENT

2016	Develop Action Plan
2016-2017	Environmental Review
2017	Propose Rule Amendment

EXISTING AND ONGOING STUDIES

- Wenatchee Watershed Planning, Phase IV – Detailed Implementation Plan, 2008, Wenatchee Water Shed Planning Unit
- Wenatchee Watershed Management Plan, 2006, Wenatchee Watershed planning Unit



Point of Diversion (Yellow triangle symbol)

Stream Gage (Blue circle symbol)

Leavenworth Urban Growth Area (Purple shaded area)

Adaptive management (Blue arrow symbol)

Water Supply Availability:
 Guaranteed - water rights are permanently placed in the State Trust Program under RCW 90.42.08
 Firm - water rights that are described as "non-permanent conveyances" under RCW 90.42.040
 Interruptible - water rights that are subject to interruption during drought years



WRIA 7
WRIA 39
WRIA 45
WRIA 39
WRIA 45
WRIA 39