

P U M P S T A T I O N S

COIC PUMP EXCHANGE PROJECT

The COIC Pump Exchange project consists of installing a piped and pressurized system, and replacing the current gravity fed point of diversion with a pump station downstream on the Wenatchee River or Icicle Creek near their confluence. The COIC project would restore 11.9 cfs (3,640 acre-feet) to lower Icicle Creek throughout the irrigation season.

Project Benefits:

- Increases conservation through piping projects
- Increases flow from 8.0 to 11.9 cfs for fish in Icicle Creek
- Saves 2,100 ac-ft to 3,500 ac-ft of water in Icicle Creek

Current Conditions:

- Point of Diversion (Water Body) = Icicle Creek
- Point of Diversion (RM) = 4.5

Potential Future Conditions:

- Point of Diversion (Water Body) = Wenatchee River
- Point of Diversion (RM) = 29.5

IPID DRYDEN PUMP EXCHANGE PROJECT

The IPID Dryden Pump Exchange project would supply a portion of IPID water from the Wenatchee River instead of from Icicle and Peshastin Creeks. This project would include a pump station on the right bank of the Wenatchee River near the Highway 2 bridge, immediately west of Dryden and a delivery pipeline that would extend to the PID and IID canals. This project would provide an average water savings of 25 cfs and 1,484 acre-feet in late summer.

Project Benefits:

- Decrease IPID's diversion on Icicle Creek by 25 to 40 cfs depending on operation
- Leaves 1,484 ac-ft/year in Icicle Creek
- Benefits Instream Flow and Fish

Current Conditions:

- Point of Diversion (Water Body) = Icicle Creek
- Point of Diversion (RM) = 5.7

Potential Future Conditions:

- Point of Diversion (Water Body) = Wenatchee River
- Point of Diversion (RM) = 16.5

IPID FULL PIPING AND PUMP EXCHANGE PROJECT

The IPID Full Piping and Pump Exchange would eliminate the surface water diversions on Icicle Creek and Peshastin Creek by constructing three surface water intakes and pumping facilities on the Wenatchee River and fully piping and pressurizing the IPID delivery system. The IPID Full Piping and Pump Exchange estimated water savings of up to 117 cfs and 30,000 acre-feet throughout the irrigation season.

Project Benefits:

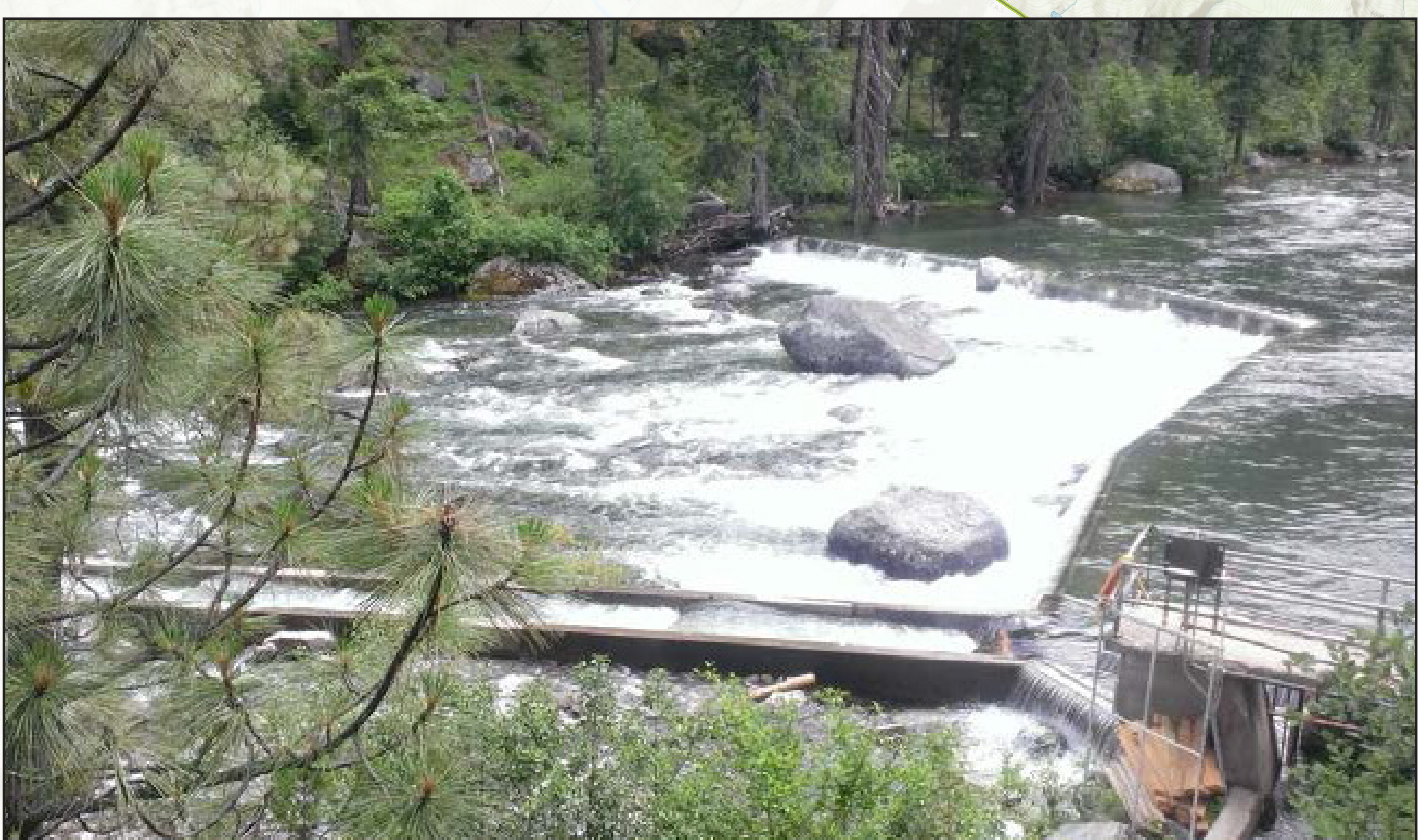
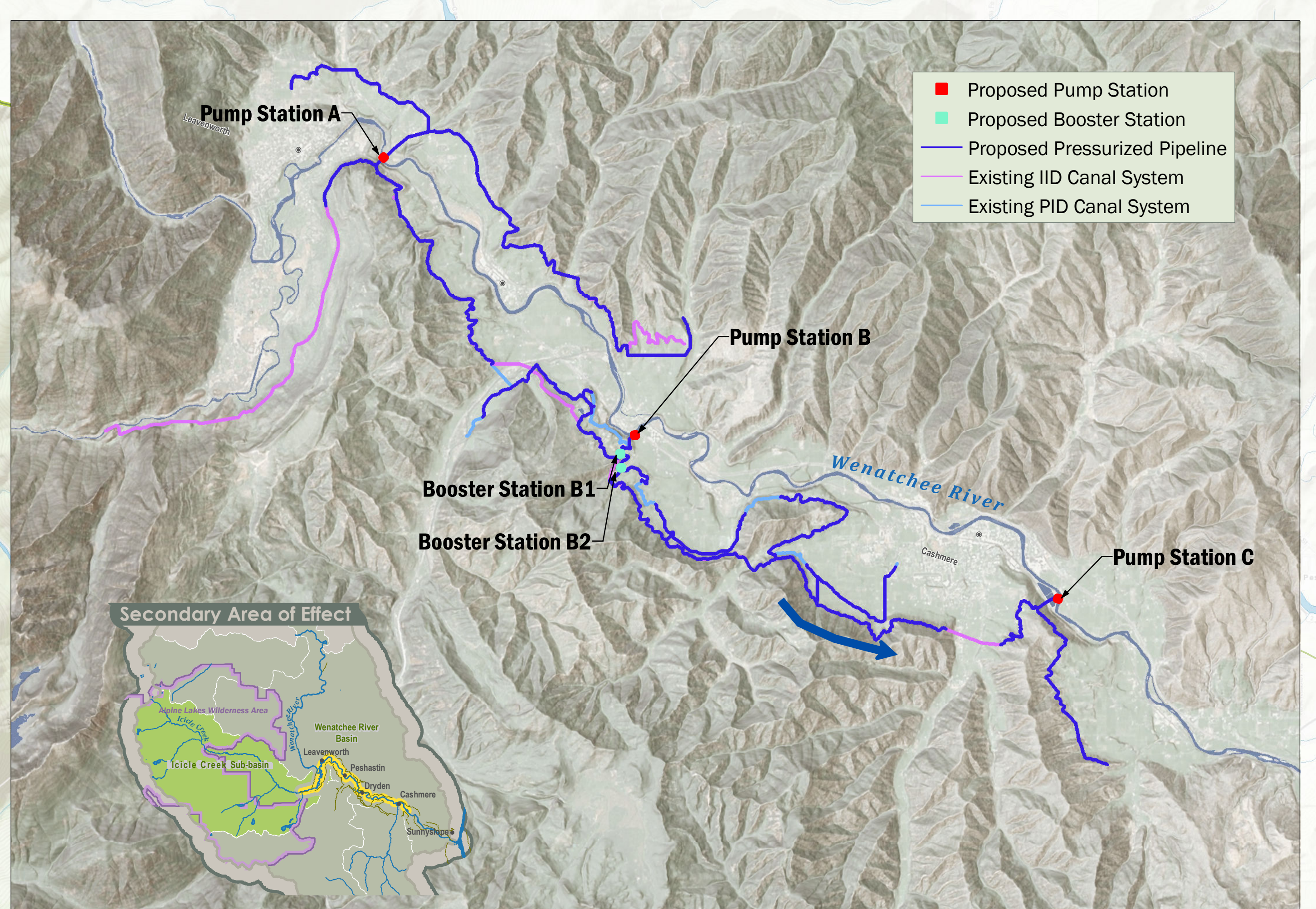
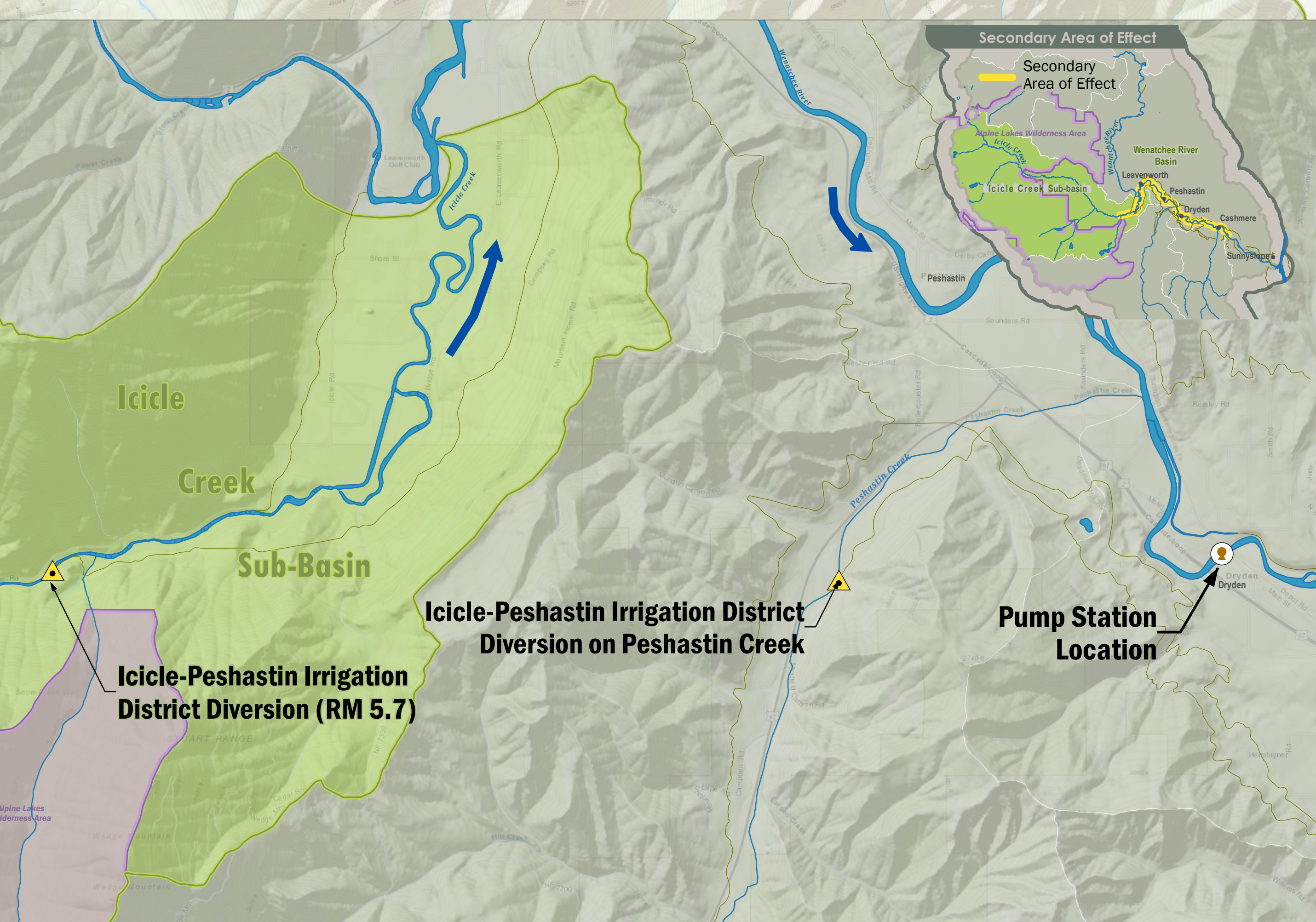
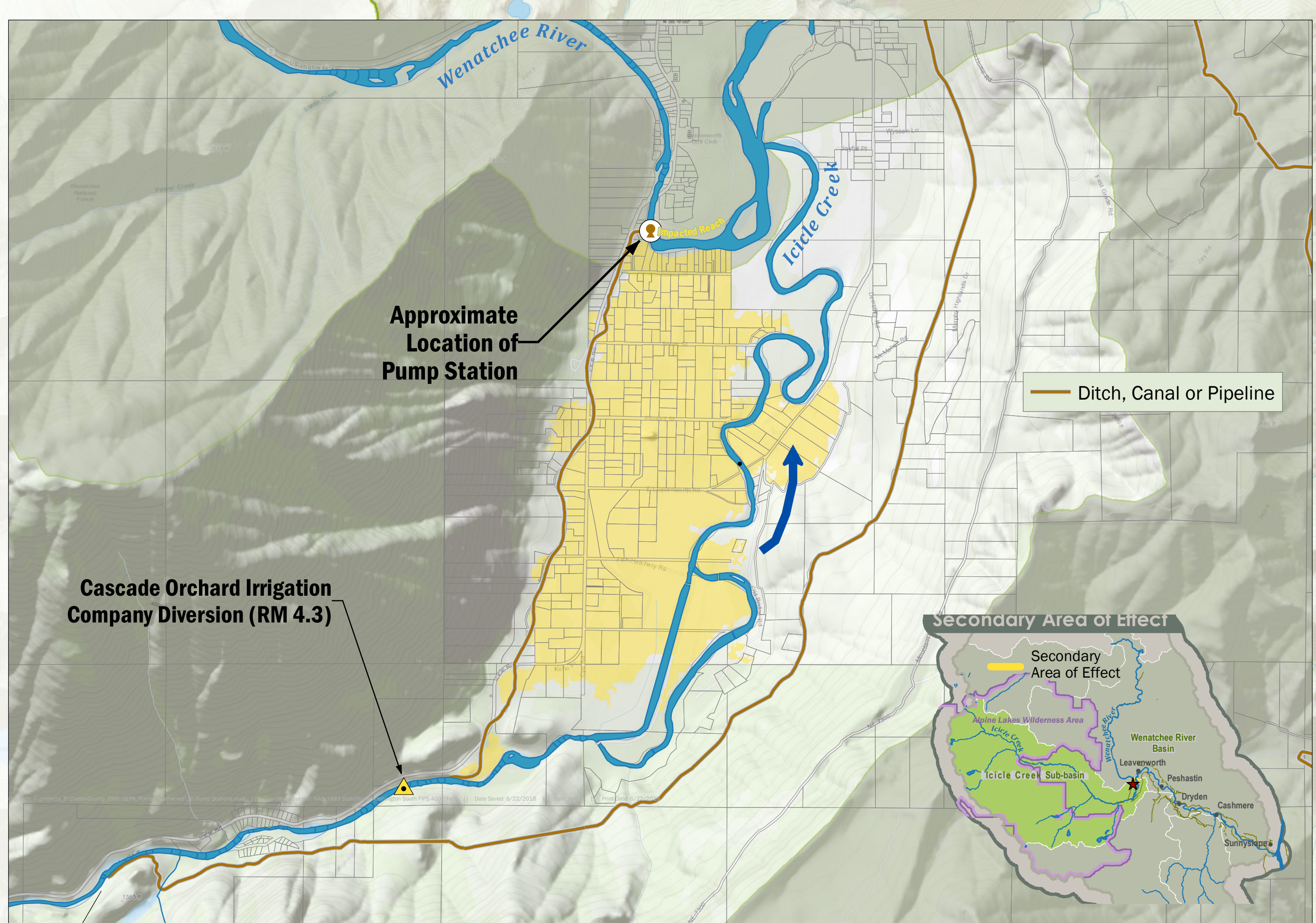
- Increase flow in Icicle Creek by up to 117 cfs
- Benefits Instream Flow and Fish
- Improves Agricultural Reliability

Current Conditions:

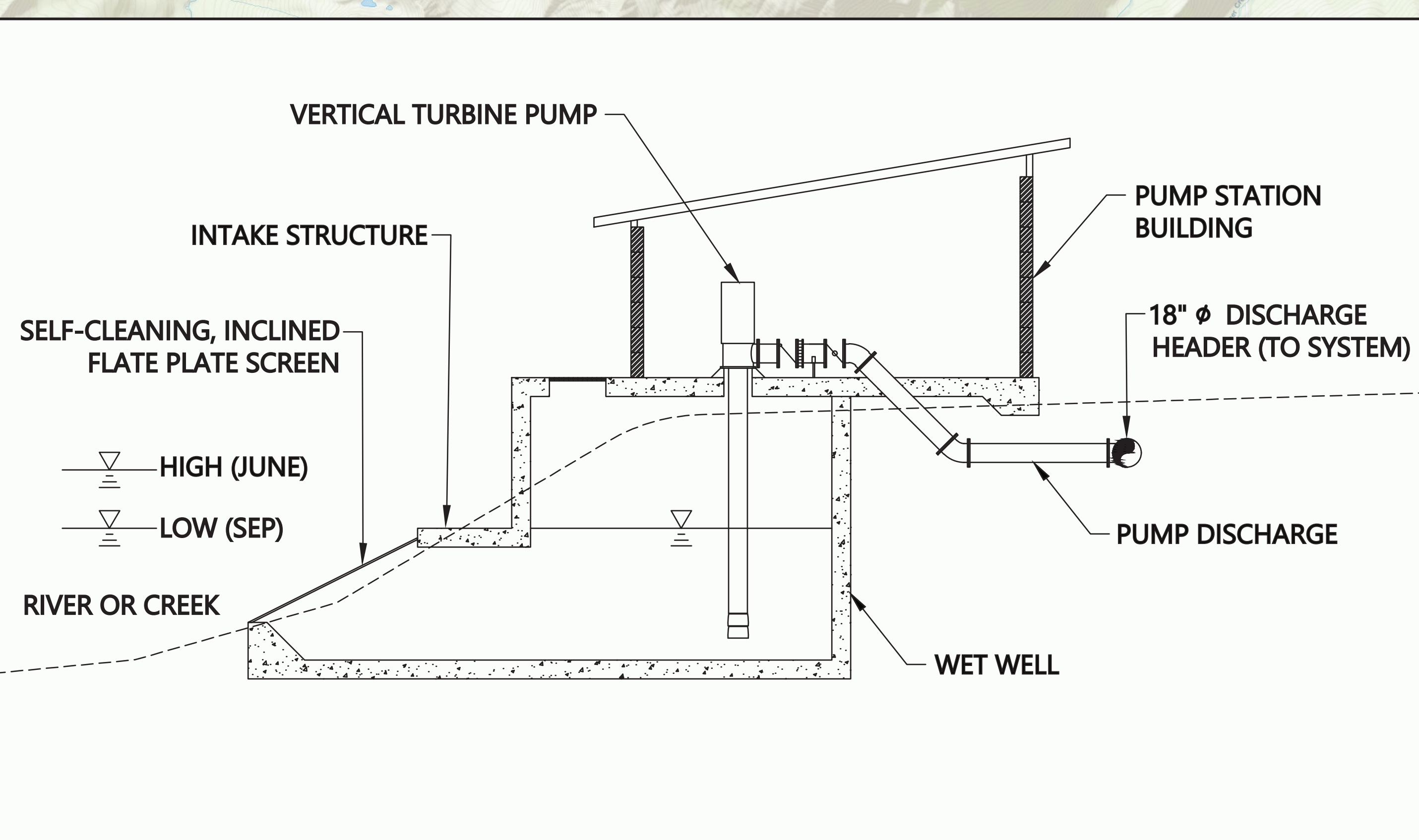
- Point of Diversion (Water Body) = Icicle Creek

Potential Future Conditions:

- Point of Diversion (Water Body) = Wenatchee River



COIC and LNFH's Current Diversion



Pump Station Conceptual Sketch



Example Pump Station Building