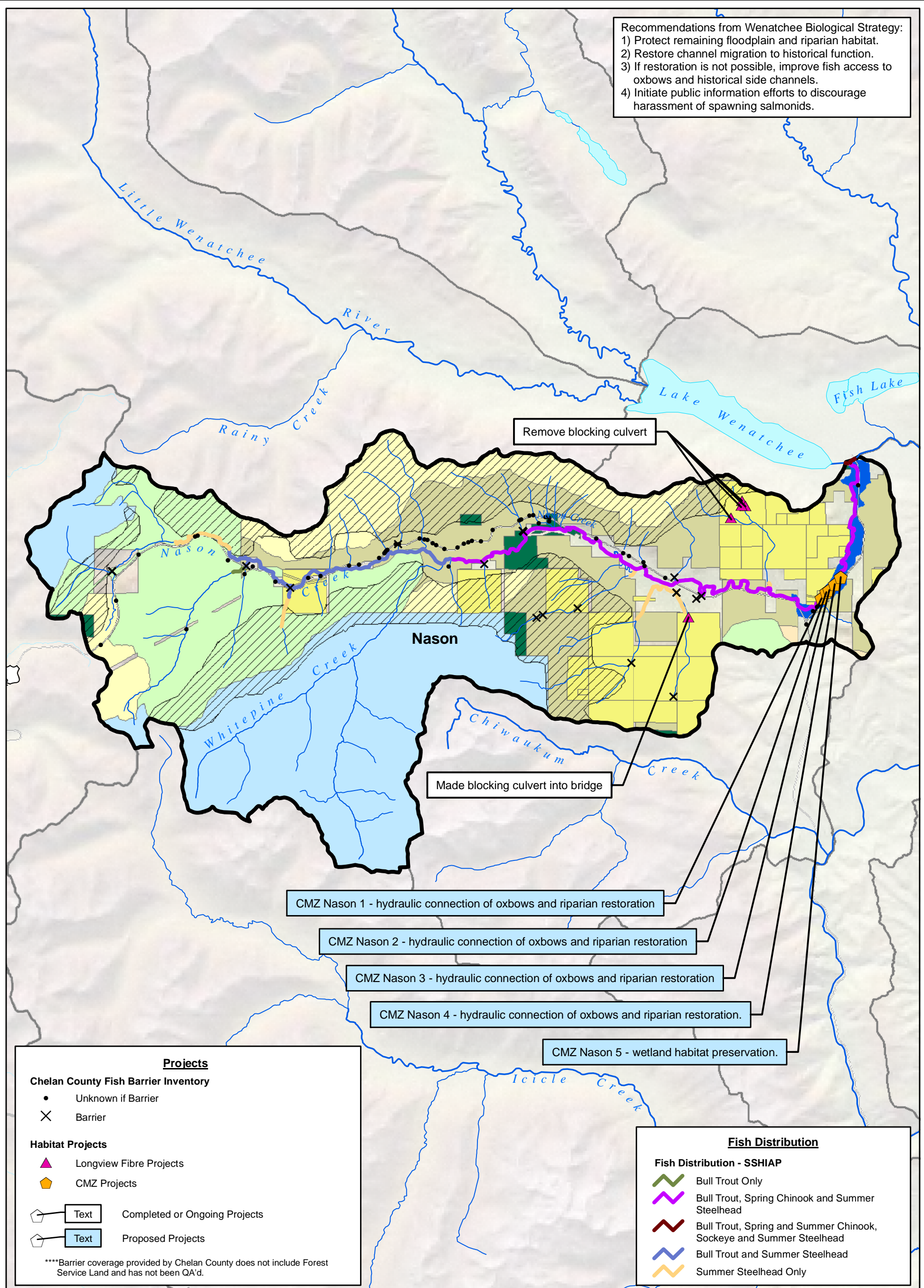


Recommendations from Wenatchee Biological Strategy:  
 1) Protect remaining floodplain and riparian habitat.  
 2) Restore channel migration to historical function.  
 3) If restoration is not possible, improve fish access to oxbows and historical side channels.  
 4) Initiate public information efforts to discourage harassment of spawning salmonids.



**Projects**

**Chelan County Fish Barrier Inventory**

- Unknown if Barrier
- × Barrier

**Habitat Projects**

- ▲ Longview Fibre Projects
- ◆ CMZ Projects

◻ Text Completed or Ongoing Projects  
◻ Text Proposed Projects

\*\*\*\*Barrier coverage provided by Chelan County does not include Forest Service Land and has not been QA'd.

**Fish Distribution**

**Fish Distribution - SSHIAP**

- ▲ Bull Trout Only
- ▲ Bull Trout, Spring Chinook and Summer Steelhead
- ▲ Bull Trout, Spring and Summer Chinook, Sockeye and Summer Steelhead
- ▲ Bull Trout and Summer Steelhead
- ▲ Summer Steelhead Only

**USFS Northwest Forest Plan**

- Administrative Withdrawn Areas (Not for Harvest)
- USFS - Other
- Late Successional Reserves (Not for Harvest)
- Managed Late Successional Areas (Managed Harvest)
- MATRIX (Active Harvest)
- Congressionally Designed Wilderness

**Other Land Use Data**

- Channel Migration Zone
- Private Forestland
- WNF Roadless Areas
- Other Land Ownership

0 11,000  
 Scale in Feet  
 Map Projection:  
 Washington State Plane,  
 North Zone, NAD 83, Feet  
 Source: Chelan County  
 Conservation District, Chelan  
 County Department of Natural  
 Resources, Normandeau, USFS,  
 USGS, WDFW, WSDOT, WSDOE

This figure was originally produced in color. Reproduction in black and white may result in loss of information

**Nason Sub-Watershed: Fish Distribution and Habitat Projects**  
 Chelan/WRIA 45 Watershed Plan/WA

Drawn: ATB | Revision: 4 | Date: June 30, 2005 | Figure: **8**