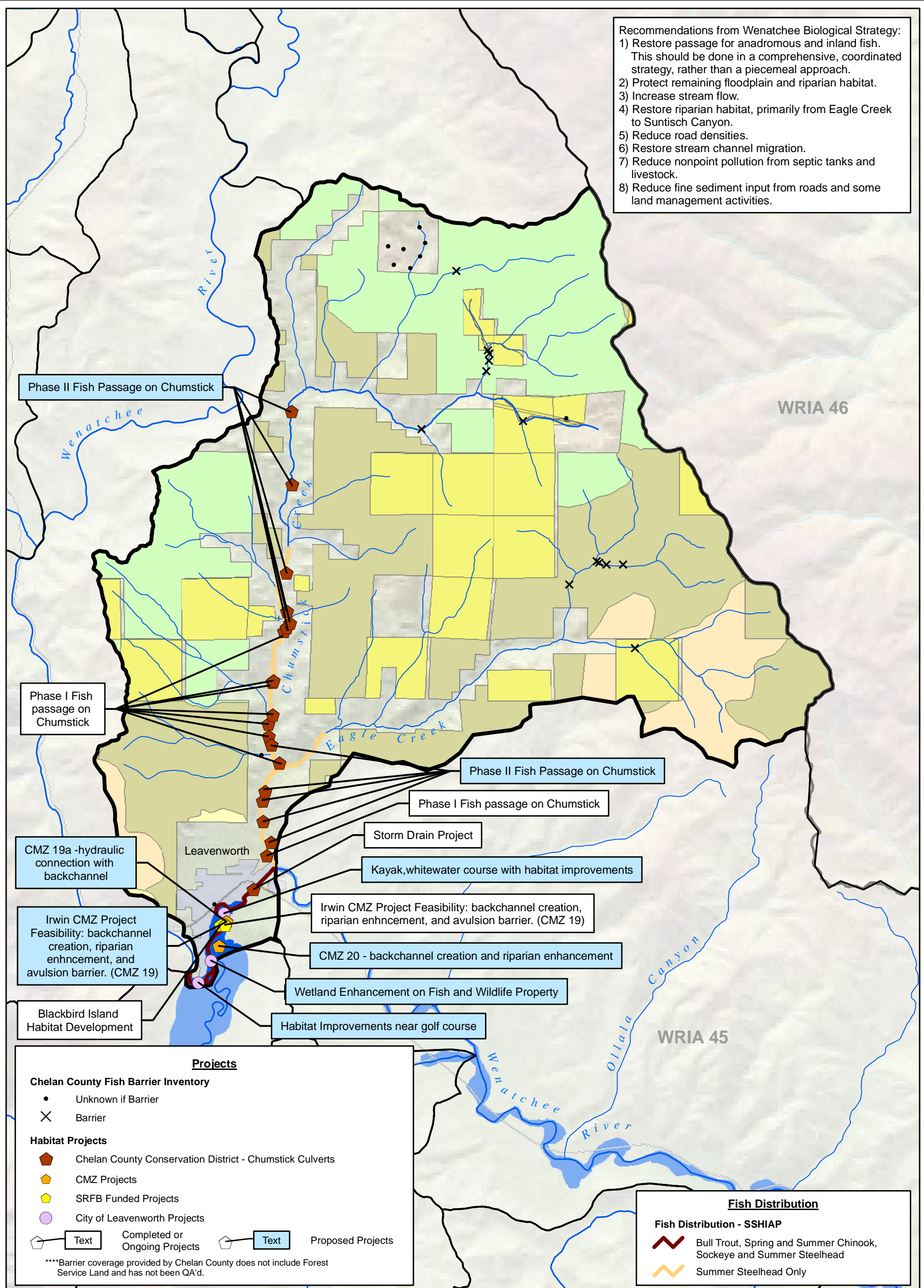


- Recommendations from Wenatchee Biological Strategy:
- 1) Restore passage for anadromous and inland fish. This should be done in a comprehensive, coordinated strategy, rather than a piecemeal approach.
 - 2) Protect remaining floodplain and riparian habitat.
 - 3) Increase stream flow.
 - 4) Restore riparian habitat, primarily from Eagle Creek to Suntisch Canyon.
 - 5) Reduce road densities.
 - 6) Restore stream channel migration.
 - 7) Reduce nonpoint pollution from septic tanks and livestock.
 - 8) Reduce fine sediment input from roads and some land management activities.



Projects

Chelan County Fish Barrier Inventory

- Unknown if Barrier
- × Barrier

Habitat Projects

- Chelan County Conservation District - Chumstick Culverts
- CMZ Projects
- SRFB Funded Projects
- City of Leavenworth Projects

☞ Text Completed or Ongoing Projects
 ☞ Text Proposed Projects

****Barrier coverage provided by Chelan County does not include Forest Service Land and has not been QA'd.

Fish Distribution

Fish Distribution - SSHIAP

- Bull Trout, Spring and Summer Chinook, Sockeye and Summer Steelhead
- Summer Steelhead Only

LEGEND

USFS Northwest Forest Plan

- Administrative Withdrawn Areas (Not for Harvest)
- USFS - Other
- Late Successional Reserves (Not for Harvest)
- Managed Late Successional Areas (Managed Harvest)
- MATRIX (Active Harvest)
- Congressionally Designed Wilderness

Other Land Use Data

- Channel Migration Zone
- Private Forestland
- Other Land Ownership

0 1.5

Scale in Miles

Map Projection:
Washington State Plane,
North Zone, NAD 83, Feet

Source: Chelan County
Conservation District, Chelan
County Department of Natural
Resources, Normandeau, USFS,
USGS, WDFW, WSDOT, WSDOE

This figure was originally produced in color. Reproduction in black and white may result in loss of information

Chumstick Sub-Watershed: Fish Distribution and Habitat Projects

Chelan/WRIA 45 Watershed Plan/WA

Drawn: ATB	Revision: 4	Date: June 30, 2005	Figure: 6
------------	-------------	---------------------	------------------