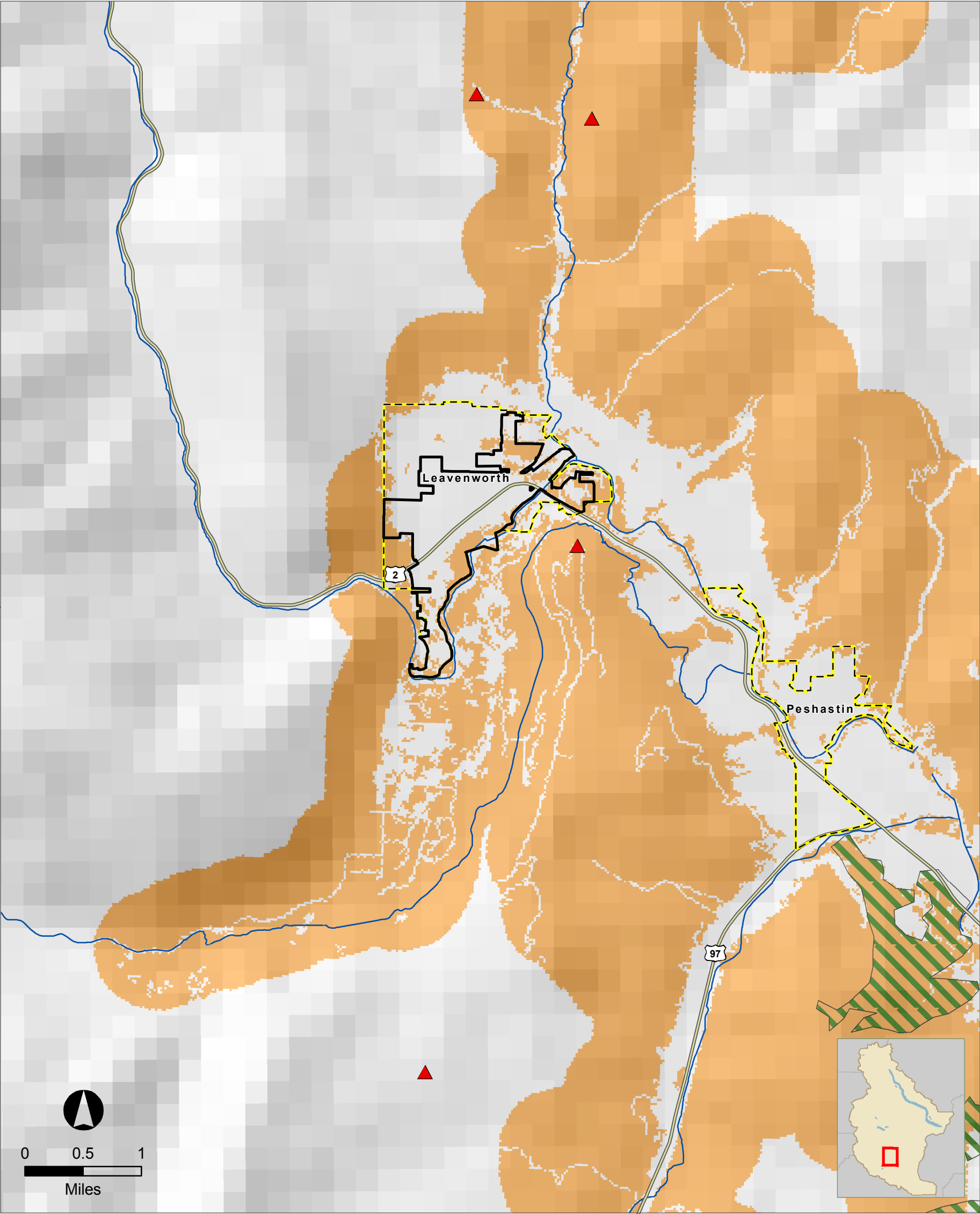




WILDFIRE HAZARD AREAS

CHELAN COUNTY MULTI-JURISDICTION NATURAL HAZARD MITIGATION PLAN 2010

Leavenworth



The information included on this map has been compiled for Chelan County from a variety of sources and is subject to change without notice. Chelan County and its Consultants make no representations or warranties, express or implied, as to accuracy, completeness, timeliness, or rights to the use of such information. Chelan County and its Consultants shall not be liable for any general, special, indirect, incidental, or consequential damages including, but not limited to, lost revenues or lost profits resulting from the use or misuse of the information contained on this map.

Data Source: The Wilderness Society, DNR, Chelan County, WSDOT.

September 24, 2010.
The Watershed Company.

MAP LEGEND

- ▲ Wildfire Occurance*
- Community Fire Planning Zone (CFPZ)
- Ponderosa Pine Zone
- Ponderosa Pine Forests
- Streams
- Highway
- Chelan_cities
- County Boundary
- UGA Boundaries

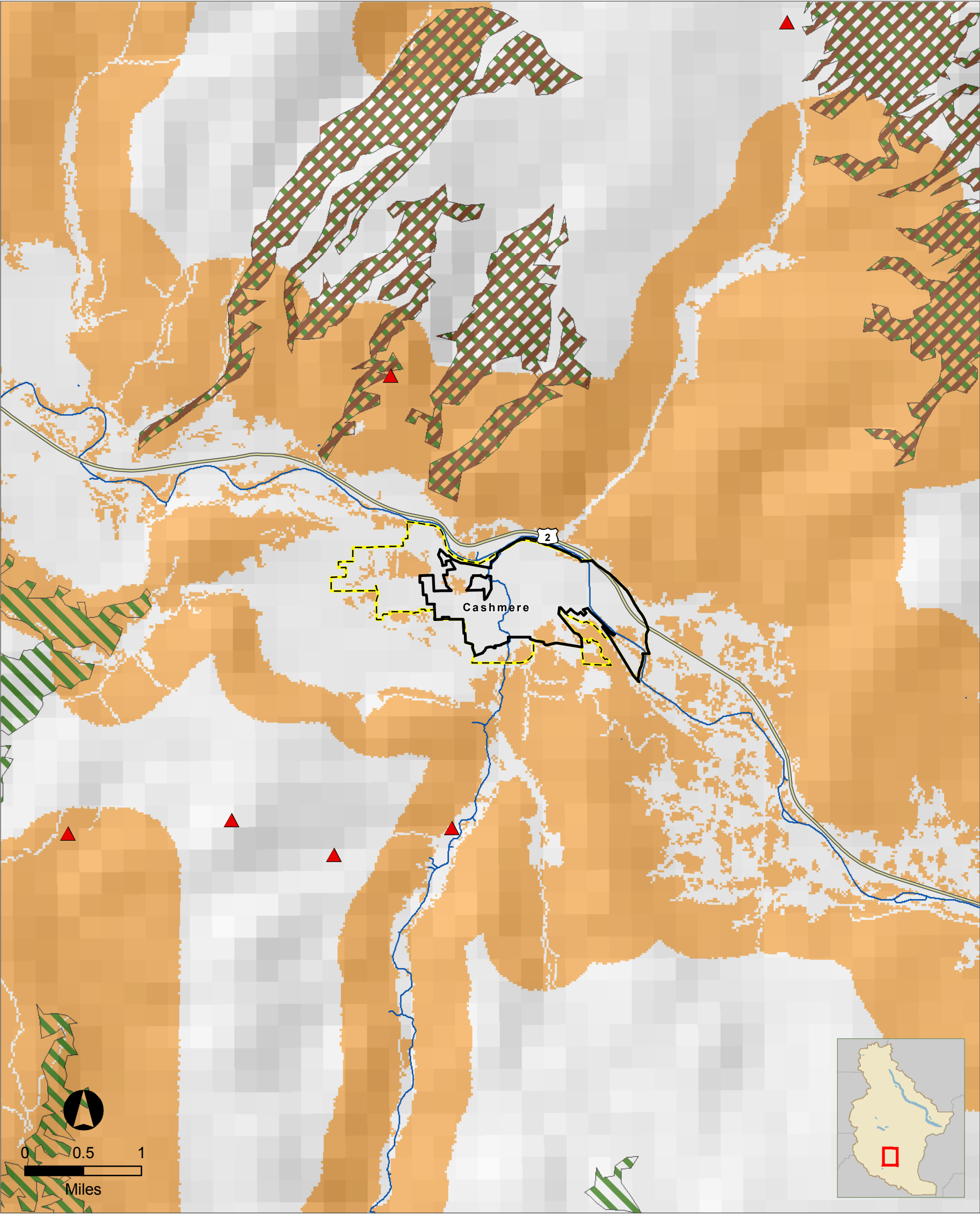
* This dataset reflects wildfires that have occurred on lands protected by the Washington State Department of Natural Resources, 2008 to present.



WILDFIRE HAZARD AREAS

CHELAN COUNTY MULTI-JURISDICTION NATURAL HAZARD MITIGATION PLAN 2010

Cashmere



The information included on this map has been compiled for Chelan County from a variety of sources and is subject to change without notice. Chelan County and its Consultants make no representations or warranties, express or implied, as to accuracy, completeness, timeliness, or rights to the use of such information. Chelan County and its Consultants shall not be liable for any general, special, indirect, incidental, or consequential damages including, but not limited to, lost revenues or lost profits resulting from the use or misuse of the information contained on this map.

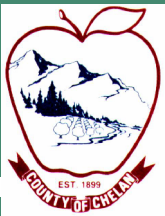
Data Source: The Wilderness Society,
DNR, Chelan County, WSDOT.

September 24, 2010.
The Watershed Company.

MAP LEGEND

- ▲ Wildfire Occurance*
- Community Fire Planning Zone (CFPZ)
- Ponderosa Pine Zone
- Ponderosa Pine Forests
- Streams
- Highway
- Chelan_cities
- County Boundary
- UGA Boundaries

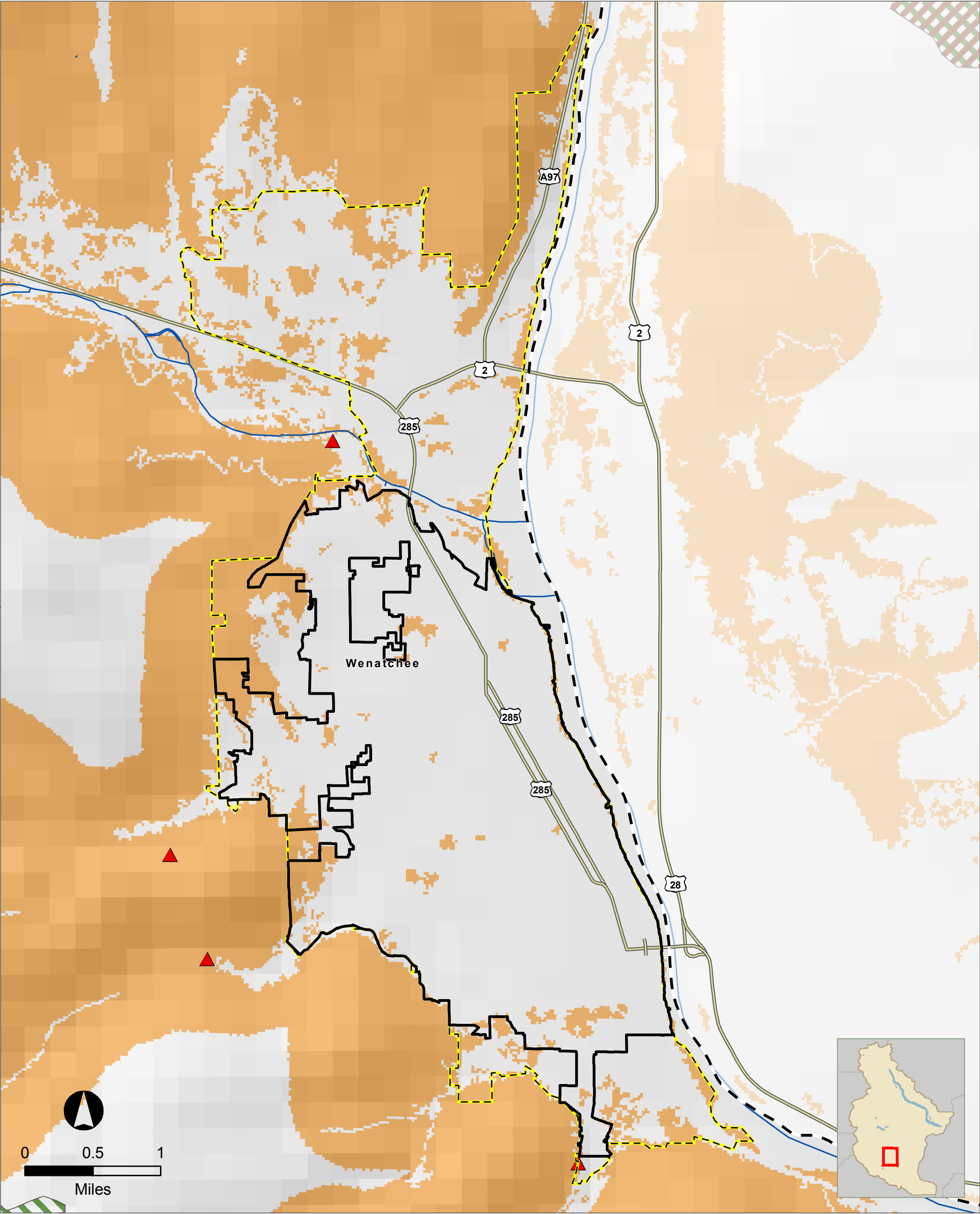
* This dataset reflects wildfires that have occurred on lands protected by the Washington State Department of Natural Resources, 2008 to present.



WILDFIRE HAZARD AREAS

CHELAN COUNTY MULTI-JURISDICTION NATURAL HAZARD MITIGATION PLAN 2010

Wenatchee



The information included on this map has been compiled for Chelan County from a variety of sources and is subject to change without notice. Chelan County and its Consultants make no representations or warranties, express or implied, as to accuracy, completeness, timeliness, or rights to the use of such information. Chelan County and its Consultants shall not be liable for any general, special, indirect, incidental, or consequential damages including, but not limited to, lost revenues or lost profits resulting from the use or misuse of the information contained on this map.

Data Source: The Wilderness Society, DNR, Chelan County, WSDOT.

September 24, 2010.
The Watershed Company.

MAP LEGEND

- ▲ Wildfire Occurance*
- Community Fire Planning Zone (CFPZ)
- Ponderosa Pine Zone
- Ponderosa Pine Forests
- Streams
- Highway
- Chelan_cities
- County Boundary
- UGA Boundaries

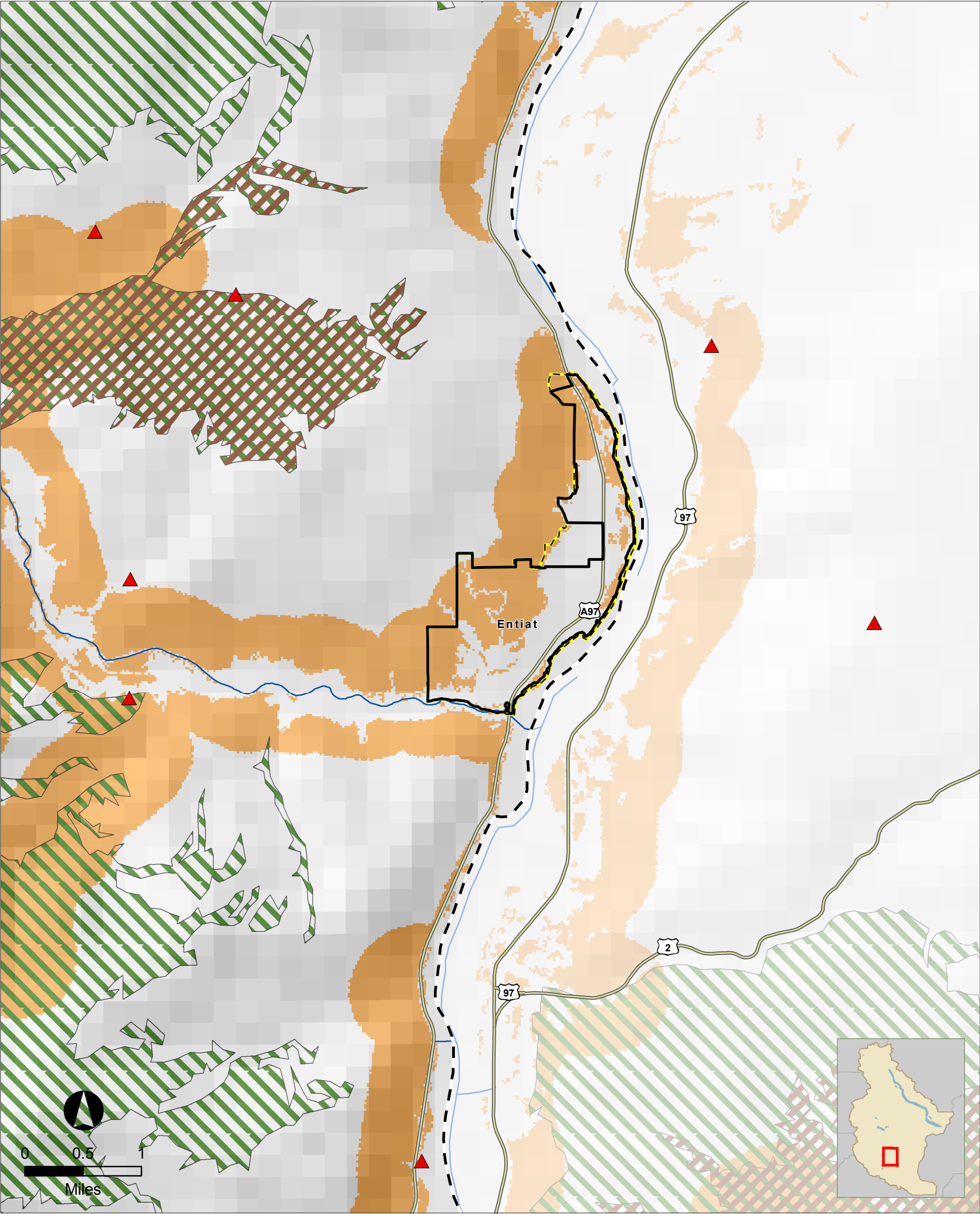
* This dataset reflects wildfires that have occurred on lands protected by the Washington State Department of Natural Resources, 2008 to present.



WILDFIRE HAZARD AREAS

CHELAN COUNTY MULTI-JURISDICTION NATURAL HAZARD MITIGATION PLAN 2010

Entiat



The information included on this map has been compiled for Chelan County from a variety of sources and is subject to change without notice. Chelan County and its Consultants make no representations or warranties, express or implied, as to accuracy, completeness, timeliness, or rights to the use of such information. Chelan County and its Consultants shall not be liable for any general, special, indirect, incidental, or consequential damages including, but not limited to, lost revenues or lost profits resulting from the use or misuse of the information contained on this map.

Data Source: The Wilderness Society, DNR, Chelan County, WSDOT.

September 24, 2010.
The Watershed Company.

MAP LEGEND

- ▲ Wildfire Occurance*
- Community Fire Planning Zone (CFPZ)
- Ponderosa Pine Zone
- Ponderosa Pine Forests
- Streams
- Highway
- Chelan_cities
- County Boundary
- UGA Boundaries

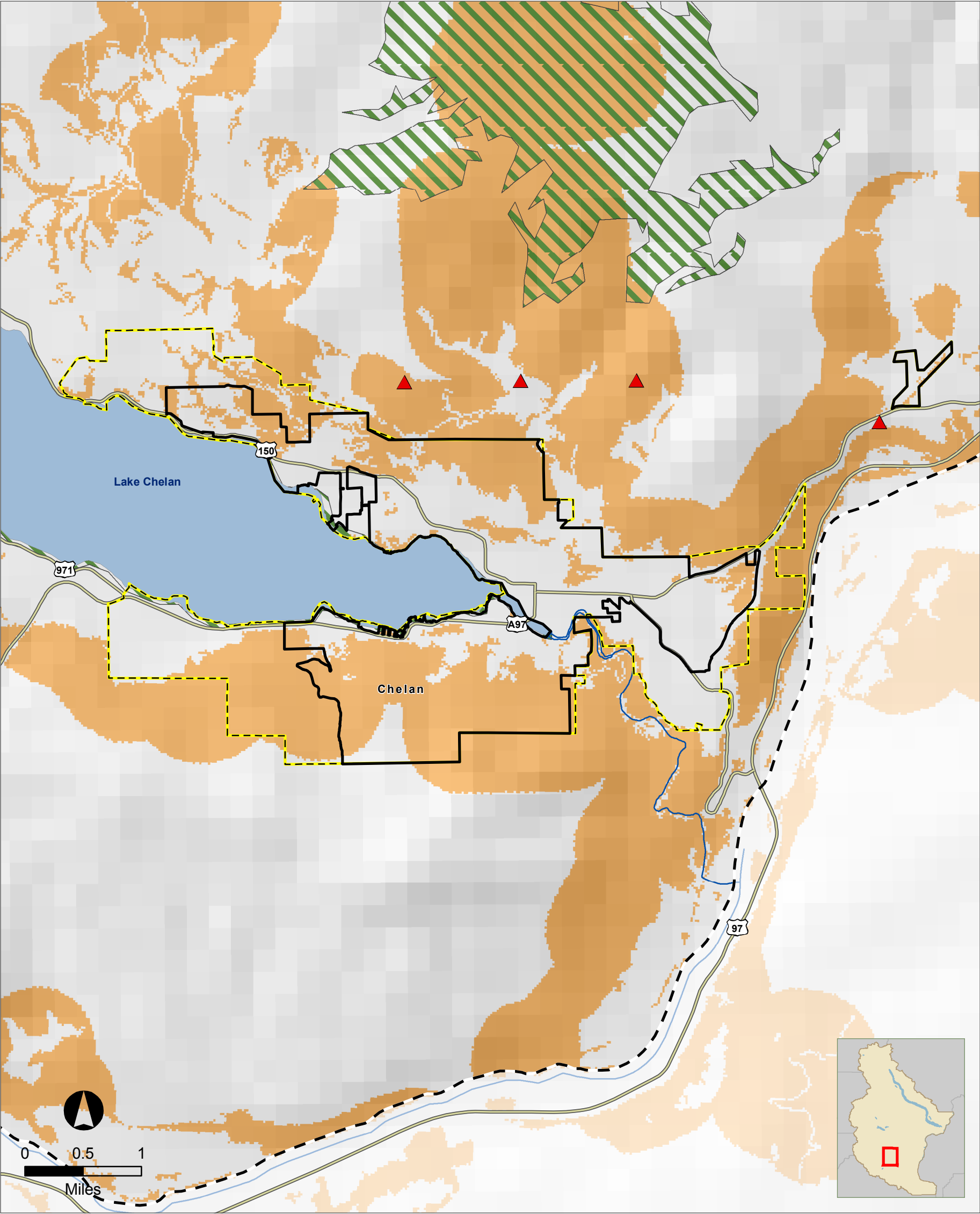
* This dataset reflects wildfires that have occurred on lands protected by the Washington State Department of Natural Resources, 2008 to present.



WILDFIRE HAZARD AREAS

CHELAN COUNTY MULTI-JURISDICTION NATURAL HAZARD MITIGATION PLAN 2010

Chelan



The information included on this map has been compiled for Chelan County from a variety of sources and is subject to change without notice. Chelan County and its Consultants make no representations or warranties, express or implied, as to accuracy, completeness, timeliness, or rights to the use of such information. Chelan County and its Consultants shall not be liable for any general, special, indirect, incidental, or consequential damages including, but not limited to, lost revenues or lost profits resulting from the use or misuse of the information contained on this map.

Data Source: The Wilderness Society, DNR, Chelan County, WSDOT.

September 24, 2010.
The Watershed Company.

MAP LEGEND

- ▲ Wildfire Occurance*
- Community Fire Planning Zone (CFPZ)
- Ponderosa Pine Zone
- Ponderosa Pine Forests
- Streams
- Highway
- Chelan_cities
- County Boundary
- UGA Boundaries

* This dataset reflects wildfires that have occurred on lands protected by the Washington State Department of Natural Resources, 2008 to present.