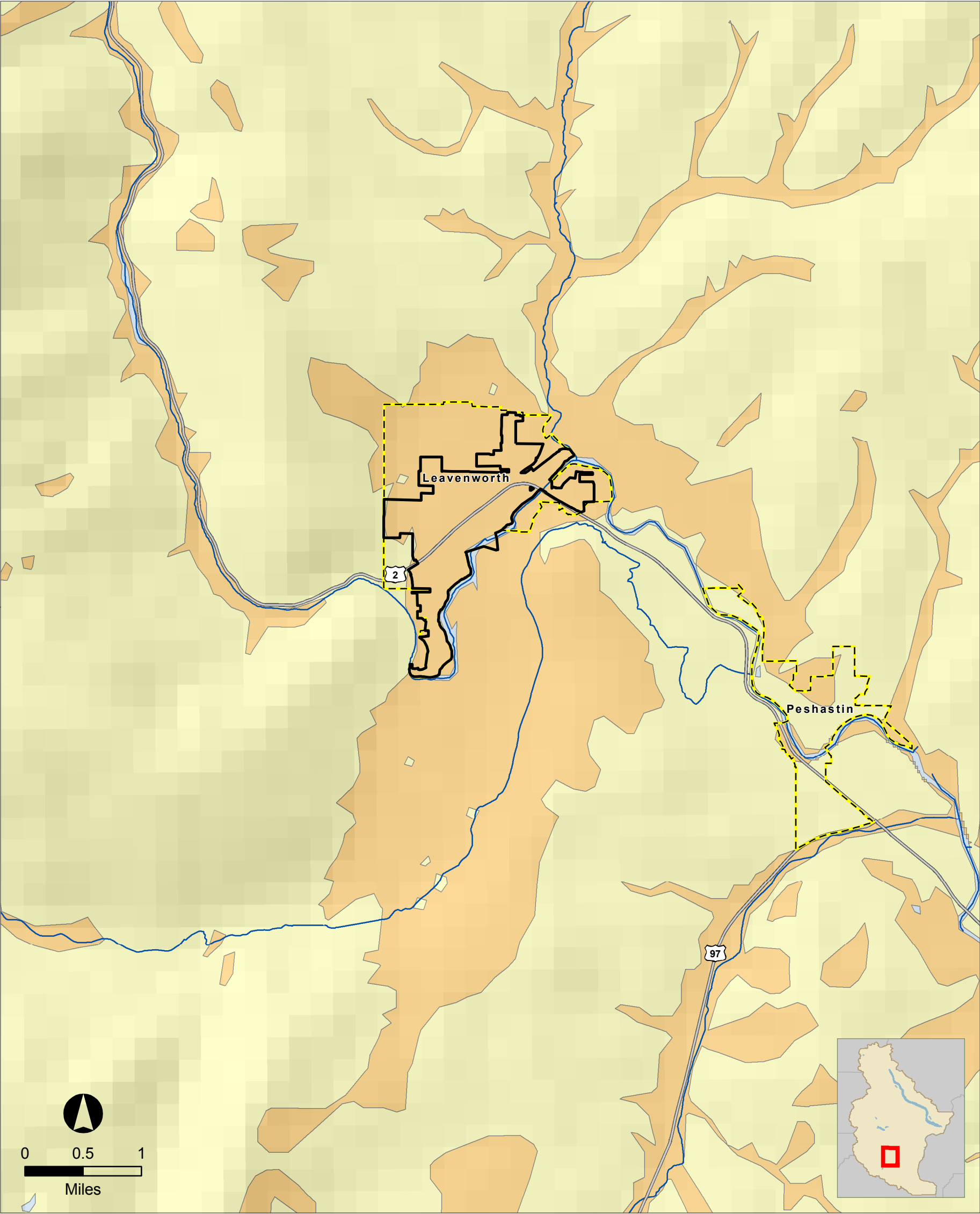




# SEISMIC DESIGN CATEGORIES

## CHELAN COUNTY MULTI-JURISDICTION NATURAL HAZARD MITIGATION PLAN 2010

### Leavenworth



The information included on this map has been compiled for Chelan County from a variety of sources and is subject to change without notice. Chelan County and its Consultants make no representations or warranties, express or implied, as to accuracy, completeness, timeliness, or rights to the use of such information. Chelan County and its Consultants shall not be liable for any general, special, indirect, incidental, or consequential damages including, but not limited to, lost revenues or lost profits resulting from the use or misuse of the information contained on this map.

Data Source: Chelan County, WSDOT, Washington State Department of Natural Resources, Division of Geology and Earth Resources.

September 24, 2010.  
The Watershed Company.

MAP LEGEND

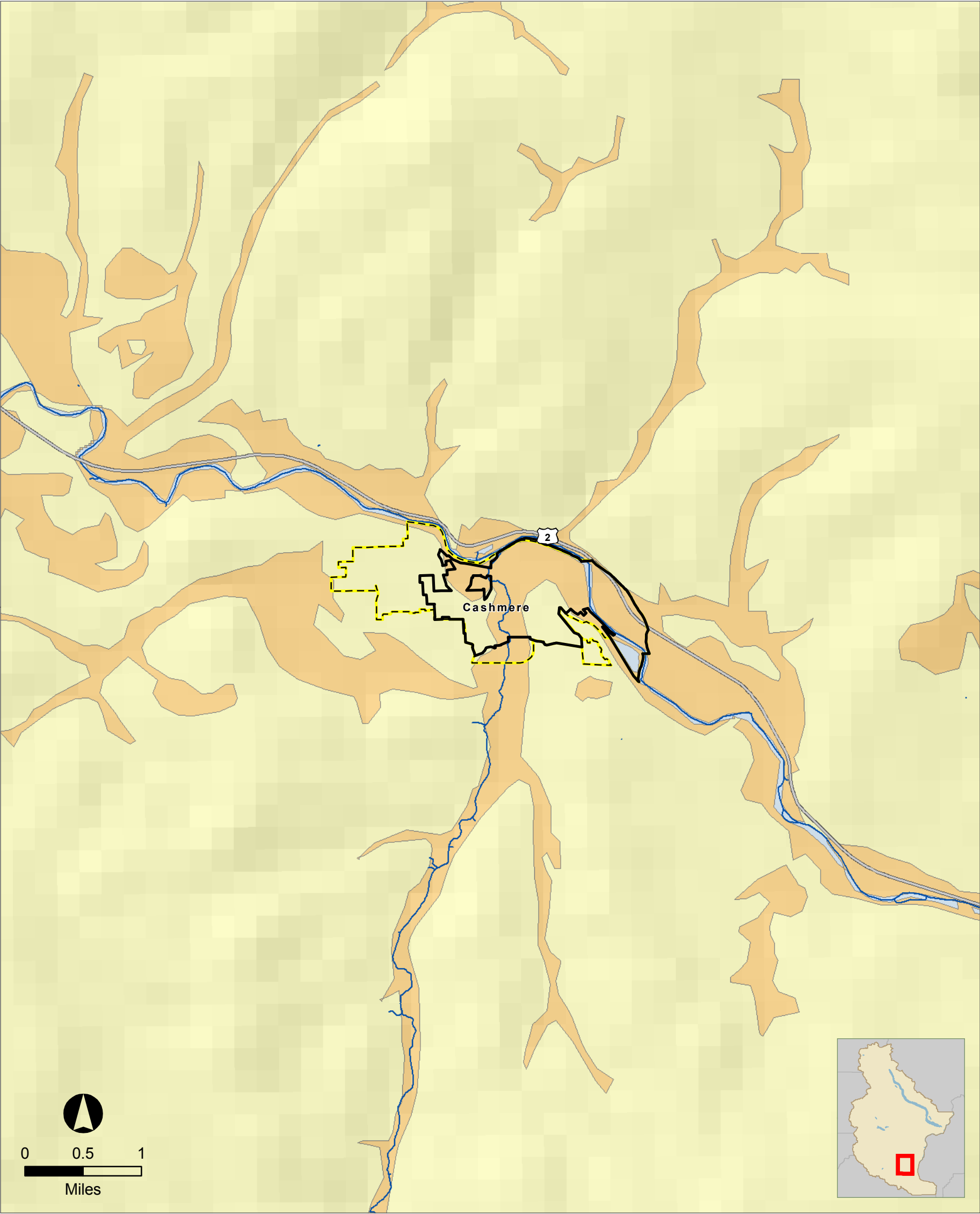
- |                            |                 |
|----------------------------|-----------------|
| Seismic Design Category B  | Streams         |
| Seismic Design Category C  | Highway         |
| Seismic Design Category D0 | City Boundary   |
| Seismic Design Category D1 | UGA Boundaries  |
| Seismic Design Category D2 | County Boundary |
| Site Class F               |                 |
| Ice                        |                 |
| Water                      |                 |



# SEISMIC DESIGN CATEGORIES

## CHELAN COUNTY MULTI-JURISDICTION NATURAL HAZARD MITIGATION PLAN 2010

### Cashmere



The information included on this map has been compiled for Chelan County from a variety of sources and is subject to change without notice. Chelan County and its Consultants make no representations or warranties, express or implied, as to accuracy, completeness, timeliness, or rights to the use of such information. Chelan County and its Consultants shall not be liable for any general, special, indirect, incidental, or consequential damages including, but not limited to, lost revenues or lost profits resulting from the use or misuse of the information contained on this map.

Data Source: Chelan County, WSDOT, Washington State Department of Natural Resources, Division of Geology and Earth Resources.

September 24, 2010.  
The Watershed Company.

#### MAP LEGEND

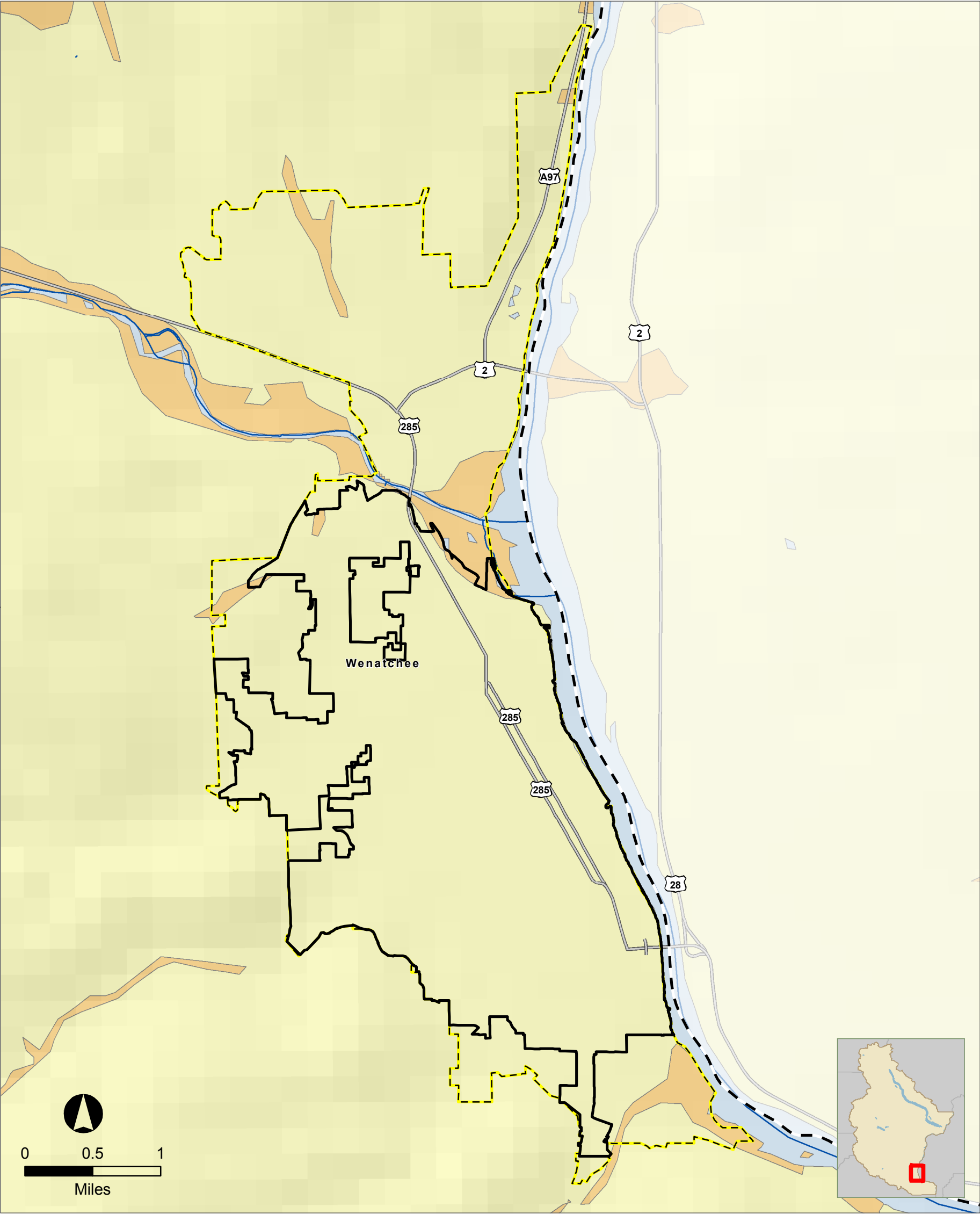
- |                            |                 |
|----------------------------|-----------------|
| Seismic Design Category B  | Streams         |
| Seismic Design Category C  | Highway         |
| Seismic Design Category D0 | City Boundary   |
| Seismic Design Category D1 | UGA Boundaries  |
| Seismic Design Category D2 | County Boundary |
| Site Class F               |                 |
| Ice                        |                 |
| Water                      |                 |



# SEISMIC DESIGN CATEGORIES

## CHELAN COUNTY MULTI-JURISDICTION NATURAL HAZARD MITIGATION PLAN 2010

### Wenatchee



The information included on this map has been compiled for Chelan County from a variety of sources and is subject to change without notice. Chelan County and its Consultants make no representations or warranties, express or implied, as to accuracy, completeness, timeliness, or rights to the use of such information. Chelan County and its Consultants shall not be liable for any general, special, indirect, incidental, or consequential damages including, but not limited to, lost revenues or lost profits resulting from the use or misuse of the information contained on this map.

Data Source: Chelan County, WSDOT, Washington State Department of Natural Resources, Division of Geology and Earth Resources.

September 24, 2010.  
The Watershed Company.

#### MAP LEGEND

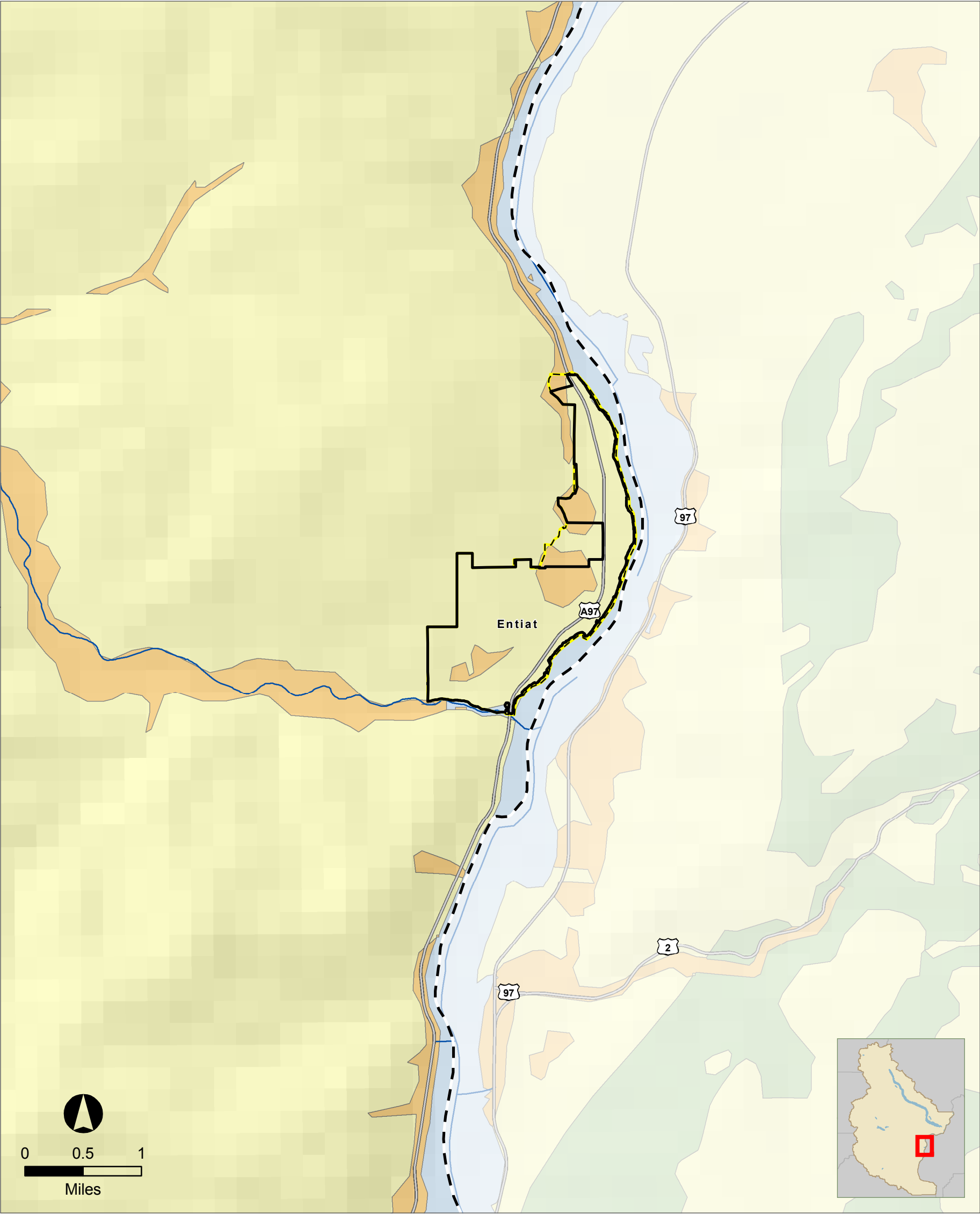
- |                            |                 |
|----------------------------|-----------------|
| Seismic Design Category B  | Streams         |
| Seismic Design Category C  | Highway         |
| Seismic Design Category D0 | City Boundary   |
| Seismic Design Category D1 | UGA Boundaries  |
| Seismic Design Category D2 | County Boundary |
| Site Class F               |                 |
| Ice                        |                 |
| Water                      |                 |



# SEISMIC DESIGN CATEGORIES

## CHELAN COUNTY MULTI-JURISDICTION NATURAL HAZARD MITIGATION PLAN 2010

### Entiat



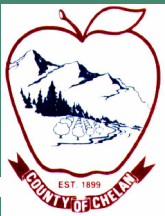
The information included on this map has been compiled for Chelan County from a variety of sources and is subject to change without notice. Chelan County and its Consultants make no representations or warranties, express or implied, as to accuracy, completeness, timeliness, or rights to the use of such information. Chelan County and its Consultants shall not be liable for any general, special, indirect, incidental, or consequential damages including, but not limited to, lost revenues or lost profits resulting from the use or misuse of the information contained on this map.

Data Source: Chelan County, WSDOT, Washington State Department of Natural Resources, Division of Geology and Earth Resources.

September 24, 2010.  
The Watershed Company.

#### MAP LEGEND

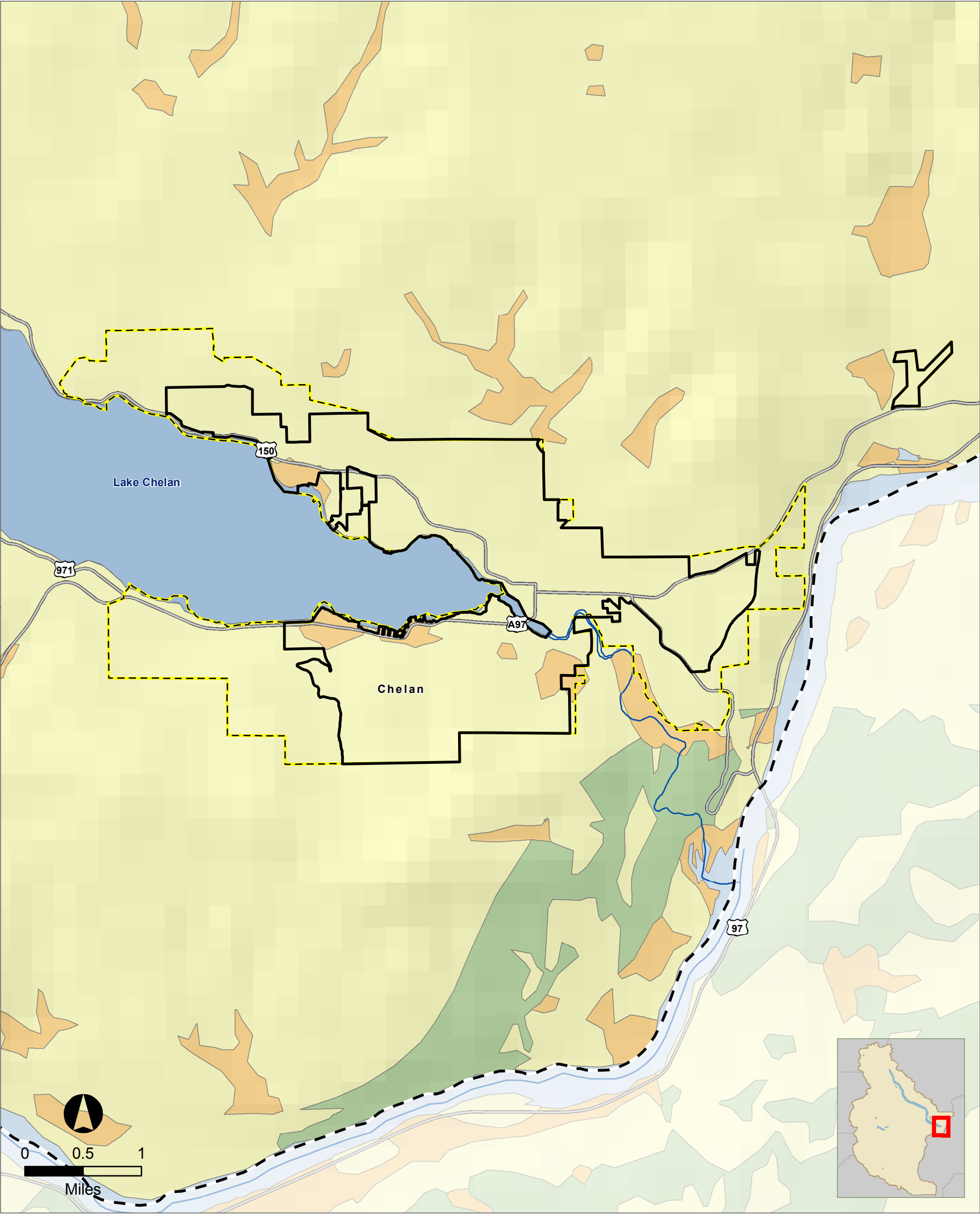
- Seismic Design Category B
- Seismic Design Category C
- Seismic Design Category D0
- Seismic Design Category D1
- Seismic Design Category D2
- Site Class F
- Ice
- Water
- Streams
- Highway
- City Boundary
- UGA Boundaries
- County Boundary



# SEISMIC DESIGN CATEGORIES

## CHELAN COUNTY MULTI-JURISDICTION NATURAL HAZARD MITIGATION PLAN 2010

### Chelan



The information included on this map has been compiled for Chelan County from a variety of sources and is subject to change without notice. Chelan County and its Consultants make no representations or warranties, express or implied, as to accuracy, completeness, timeliness, or rights to the use of such information. Chelan County and its Consultants shall not be liable for any general, special, indirect, incidental, or consequential damages including, but not limited to, lost revenues or lost profits resulting from the use or misuse of the information contained on this map.

Data Source: Chelan County, WSDOT, Washington State Department of Natural Resources, Division of Geology and Earth Resources.

September 24, 2010.  
The Watershed Company.

#### MAP LEGEND

- |                            |                 |
|----------------------------|-----------------|
| Seismic Design Category B  | Streams         |
| Seismic Design Category C  | Highway         |
| Seismic Design Category D0 | City Boundary   |
| Seismic Design Category D1 | UGA Boundaries  |
| Seismic Design Category D2 | County Boundary |
| Site Class F               |                 |
| Ice                        |                 |
| Water                      |                 |