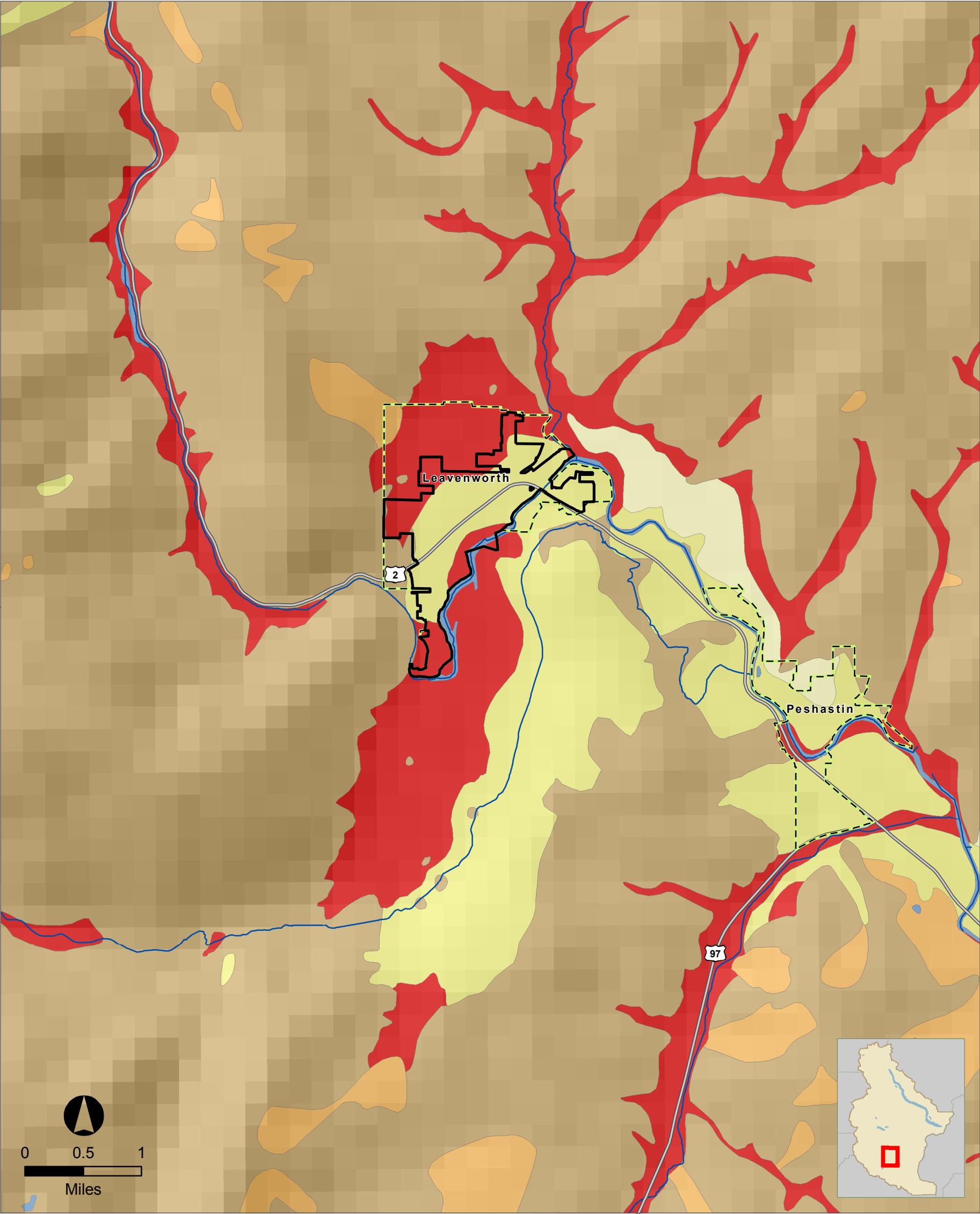




LIQUEFACTION SUSCEPTIBILITY

CHELAN COUNTY MULTI-JURISDICTION NATURAL HAZARD MITIGATION PLAN 2010

Leavenworth



The information included on this map has been compiled for Chelan County from a variety of sources and is subject to change without notice. Chelan County and its Consultants make no representations or warranties, express or implied, as to accuracy, completeness, timeliness, or rights to the use of such information. Chelan County and its Consultants shall not be liable for any general, special, indirect, incidental, or consequential damages including, but not limited to, lost revenues or lost profits resulting from the use or misuse of the information contained on this map.

Data Source: Chelan County, WSDOT, Washington State Department of Natural Resources, Division of Geology and Earth Resources.

September 24, 2010.
The Watershed Company.

MAP LEGEND

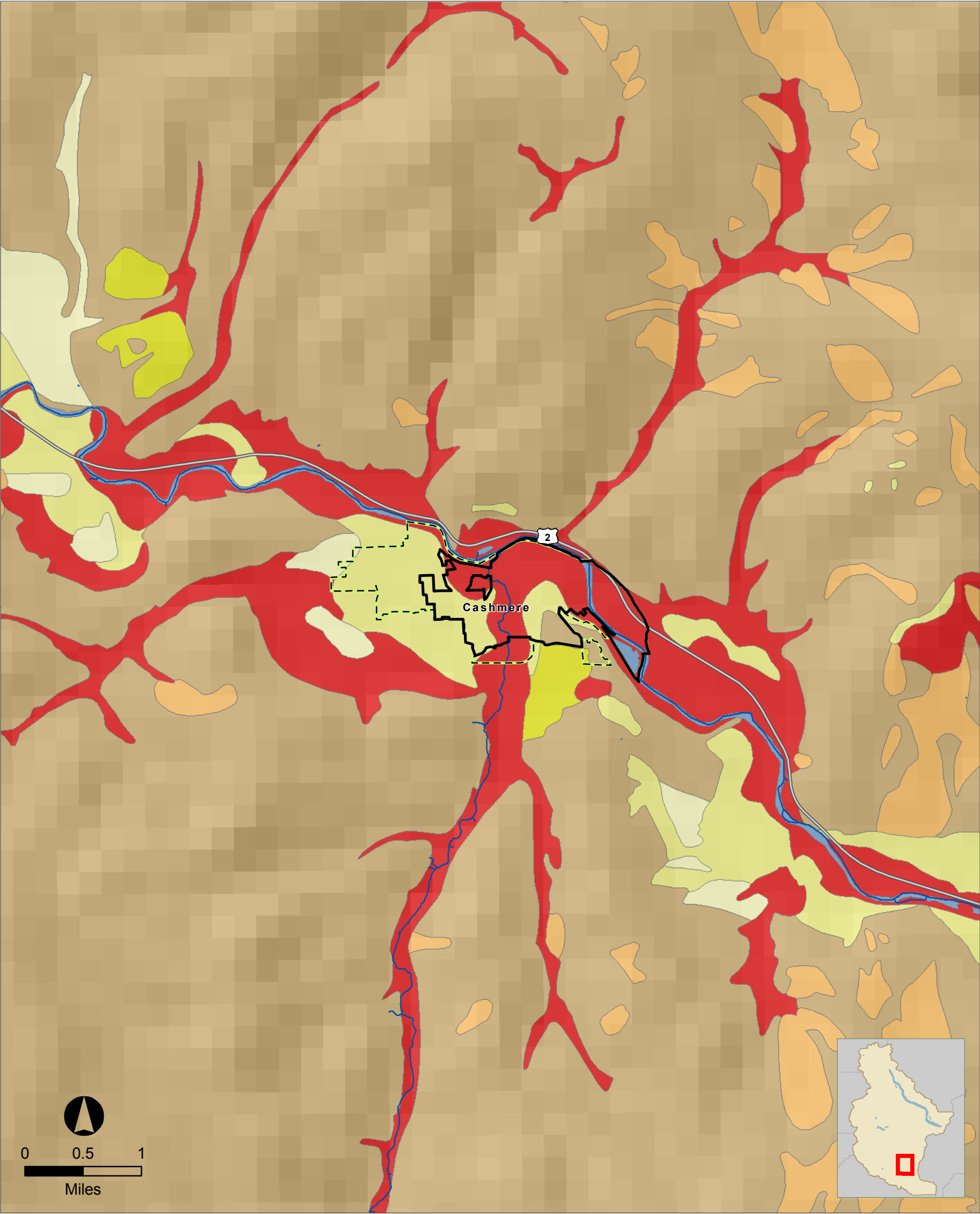
- | | | |
|-----------------|---|--------------------------------|
| Streams | Area Not Subject to Liquefaction | Level of Susceptibility |
| Highway | Bedrock | High |
| UGA Boundaries | Ice | Moderate to High |
| City Boundary | Peat | Moderate |
| County Boundary | Water | Low to Moderate |
| | | Low |
| | | Very low to Low |
| | | Very low |



LIQUEFACTION SUSCEPTIBILITY

CHELAN COUNTY MULTI-JURISDICTION NATURAL HAZARD MITIGATION PLAN 2010

Cashmere



The information included on this map has been compiled for Chelan County from a variety of sources and is subject to change without notice. Chelan County and its Consultants make no representations or warranties, express or implied, as to accuracy, completeness, timeliness, or rights to the use of such information. Chelan County and its Consultants shall not be liable for any general, special, indirect, incidental, or consequential damages including, but not limited to, lost revenues or lost profits resulting from the use or misuse of the information contained on this map.

Data Source: Chelan County, WSDOT, Washington State Department of Natural Resources, Division of Geology and Earth Resources.

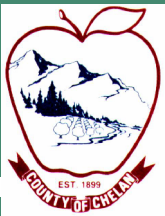
September 24, 2010.
The Watershed Company.

MAP LEGEND

- Streams
- Highway
- UGA Boundaries
- City Boundary
- County Boundary

- Area Not Subject to Liquefaction
- Bedrock
 - Ice
 - Peat
 - Water

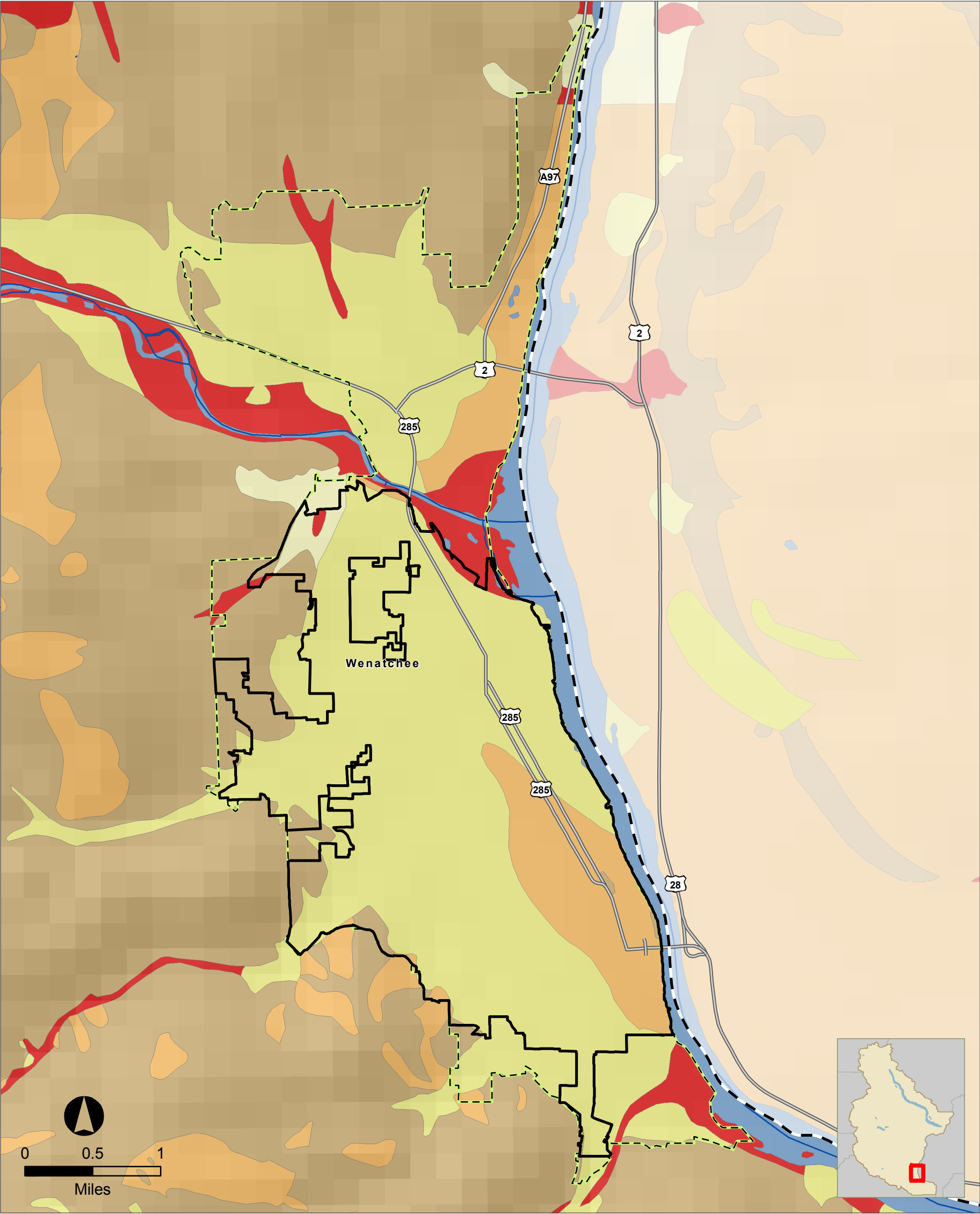
- Level of Susceptibility
- High
 - Moderate to High
 - Moderate
 - Low to Moderate
 - Low
 - Very low to Low
 - Very low



LIQUEFACTION SUSCEPTIBILITY

CHELAN COUNTY MULTI-JURISDICTION NATURAL HAZARD MITIGATION PLAN 2010

Wenatchee



The information included on this map has been compiled for Chelan County from a variety of sources and is subject to change without notice. Chelan County and its Consultants make no representations or warranties, express or implied, as to accuracy, completeness, timeliness, or rights to the use of such information. Chelan County and its Consultants shall not be liable for any general, special, indirect, incidental, or consequential damages including, but not limited to, lost revenues or lost profits resulting from the use or misuse of the information contained on this map.

Data Source: Chelan County, WSDOT, Washington State Department of Natural Resources, Division of Geology and Earth Resources.

September 24, 2010.
The Watershed Company.

MAP LEGEND

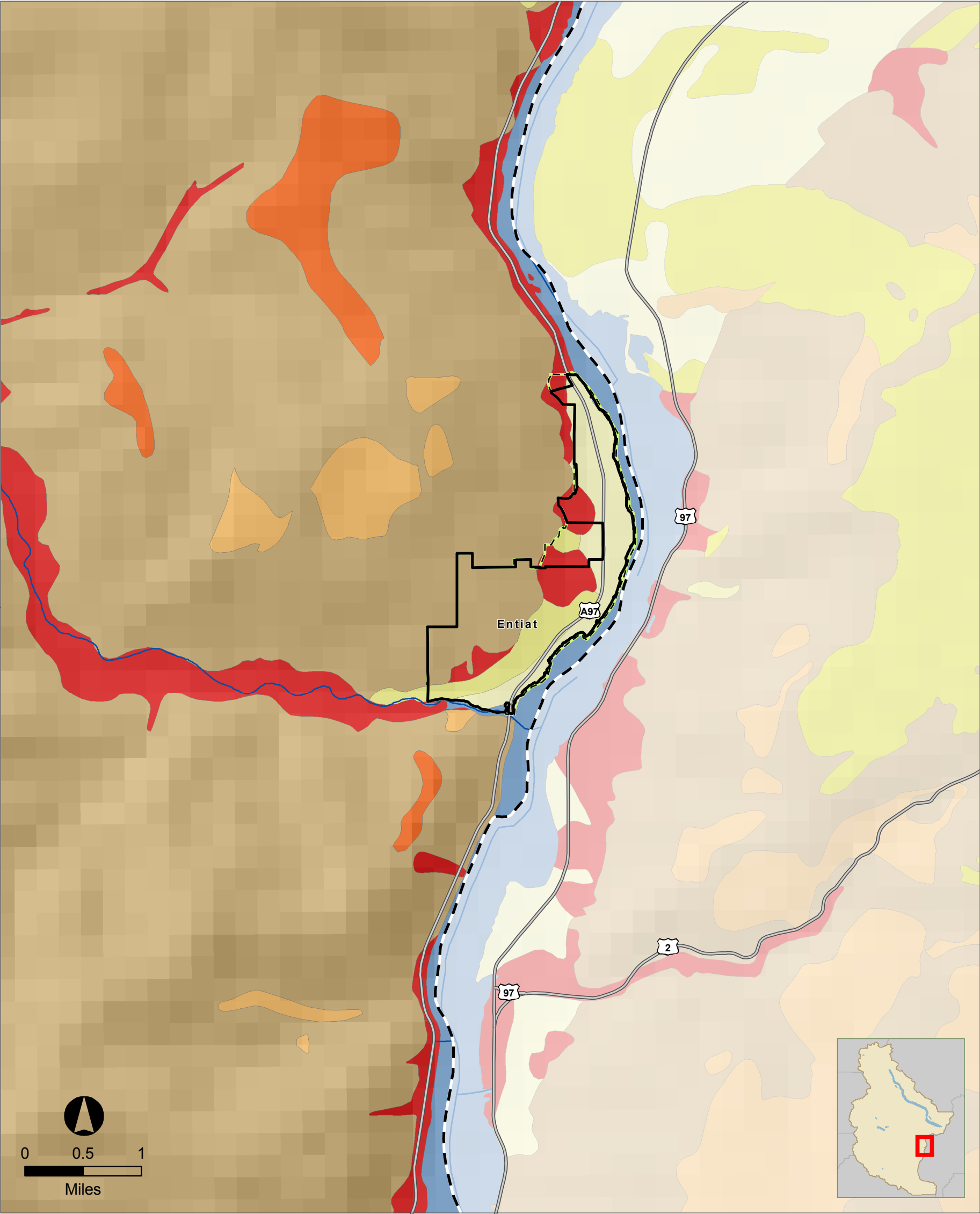
- | | | |
|-----------------|---|--------------------------------|
| Streams | Area Not Subject to Liquefaction | Level of Susceptibility |
| Highway | Bedrock | High |
| UGA Boundaries | Ice | Moderate to High |
| City Boundary | Peat | Moderate |
| County Boundary | Water | Low to Moderate |
| | | Low |
| | | Very low to Low |
| | | Very low |



LIQUEFACTION SUSCEPTIBILITY

CHELAN COUNTY MULTI-JURISDICTION NATURAL HAZARD MITIGATION PLAN 2010

Entiat



The information included on this map has been compiled for Chelan County from a variety of sources and is subject to change without notice. Chelan County and its Consultants make no representations or warranties, express or implied, as to accuracy, completeness, timeliness, or rights to the use of such information. Chelan County and its Consultants shall not be liable for any general, special, indirect, incidental, or consequential damages including, but not limited to, lost revenues or lost profits resulting from the use or misuse of the information contained on this map.

Data Source: Chelan County, WSDOT, Washington State Department of Natural Resources, Division of Geology and Earth Resources.

September 24, 2010.
The Watershed Company.

MAP LEGEND

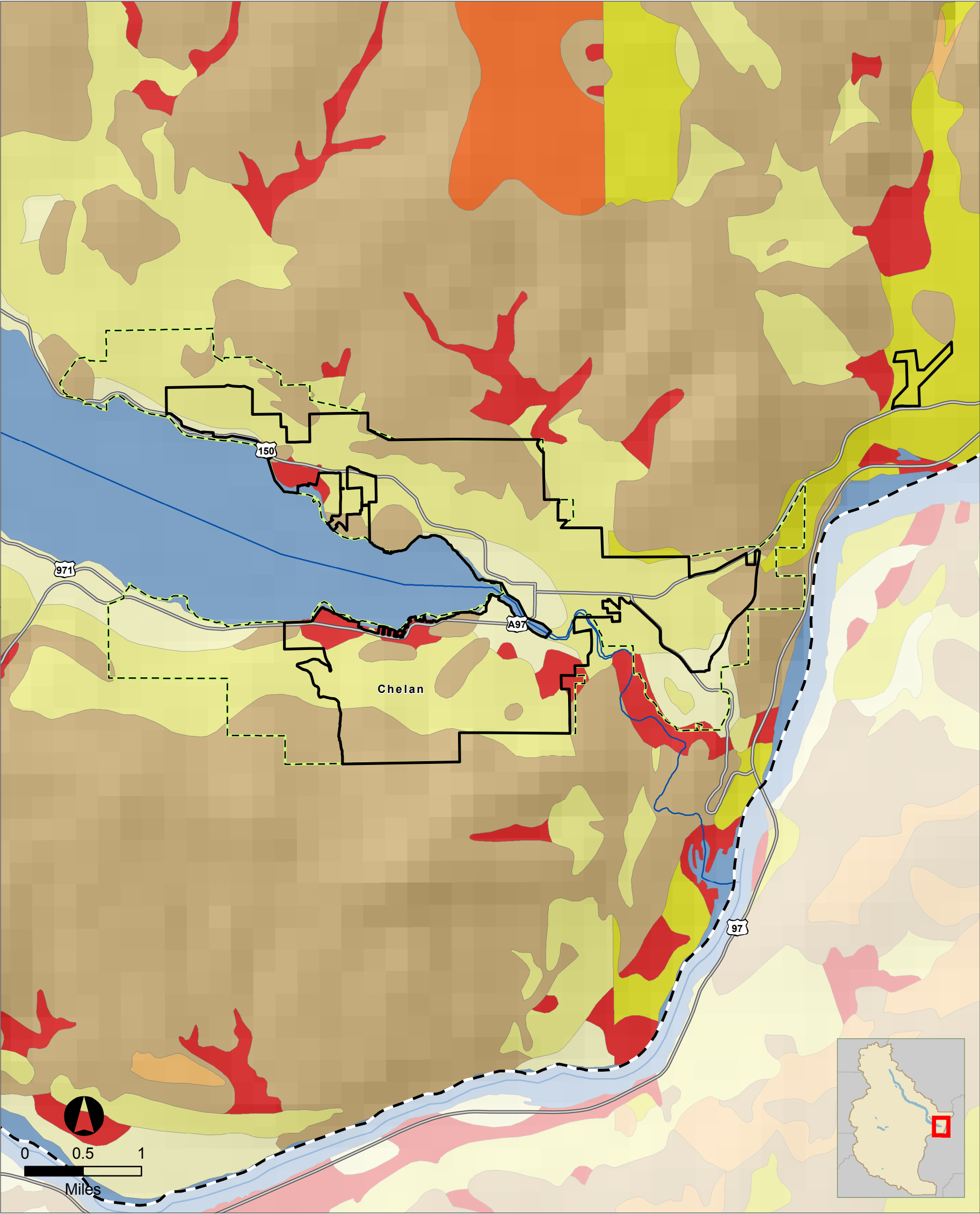
Streams	Area Not Subject to Liquefaction	Level of Susceptibility
Highway	Bedrock	High
UGA Boundaries	Ice	Moderate to High
City Boundary	Peat	Moderate
County Boundary	Water	Low to Moderate
		Low
		Very low to Low
		Very low



LIQUEFACTION SUSCEPTIBILITY

CHELAN COUNTY MULTI-JURISDICTION NATURAL HAZARD MITIGATION PLAN 2010

Chelan



The information included on this map has been compiled for Chelan County from a variety of sources and is subject to change without notice. Chelan County and its Consultants make no representations or warranties, express or implied, as to accuracy, completeness, timeliness, or rights to the use of such information. Chelan County and its Consultants shall not be liable for any general, special, indirect, incidental, or consequential damages including, but not limited to, lost revenues or lost profits resulting from the use or misuse of the information contained on this map.

Data Source: Chelan County, WSDOT, Washington State Department of Natural Resources, Division of Geology and Earth Resources.

September 24, 2010.
The Watershed Company.

MAP LEGEND

- | | | |
|-----------------|---|--------------------------------|
| Streams | Area Not Subject to Liquefaction | Level of Susceptibility |
| Highway | Bedrock | High |
| UGA Boundaries | Ice | Moderate to High |
| City Boundary | Peat | Moderate |
| County Boundary | Water | Low to Moderate |
| | | Low |
| | | Very low to Low |
| | | Very low |